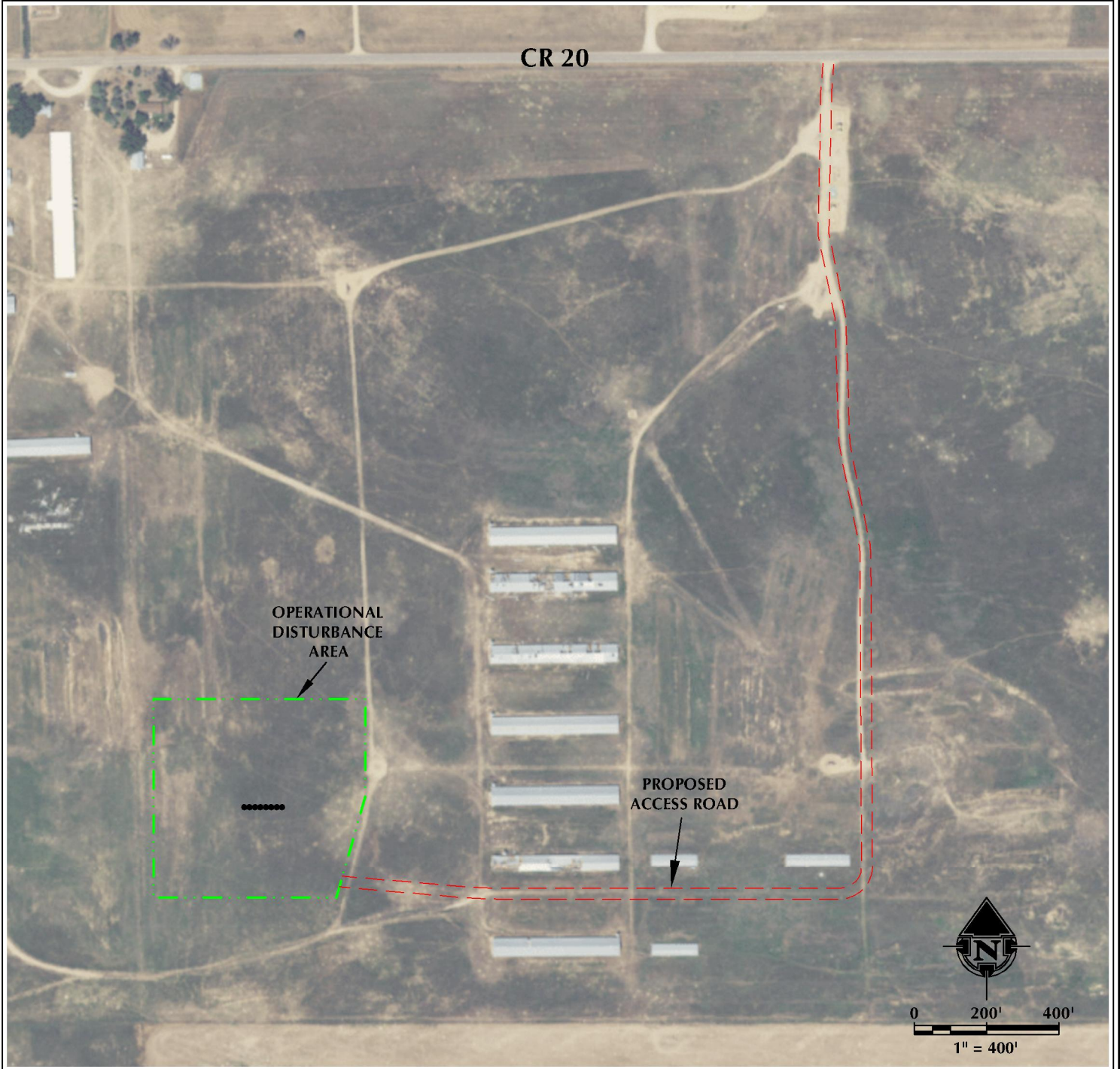


REESE 22-21HZ ACCESS MAP

SW1/4 NW1/4 SECTION 21, TOWNSHIP 2 NORTH, RANGE 67 WEST, 6TH P.M.



LEGEND

- PROPOSED WELL
- ACCESS
- DISTURBANCE BOUNDARY



609 CONSULTING, LLC
LOVELAND OFFICE
1615 Foxtrail Drive, Suite 204
Loveland, Colorado 80538
Phone 970-776-4331

SHERIDAN OFFICE
1095 Saberton Avenue
Sheridan, Wyoming 82801
Phone 307-674-0609

DATE SURVEYED: 11/17/17
DATE: 1/31/18
DRAFTER: CDR
REVISED:

DATA SOURCES:
- AERIAL COURTESY OF ESRI, INC.

PREPARED FOR:
Kerr-McGee Oil & Gas Onshore L.P.