

GOLDEN EAGLE MINE 3N-2-95 API# 05-071-06404 – TIMBER CREEK
OGCC OPERATOR NUMBER 10672 – INSPECTION DATE: MAY 07, 2018
CORRECTIVE ACTIONS COMPLETED REGARDING COGCC FIR DOCUMENT # 680102754



PHOTO 1: OVERVIEW OF LOCATION TO NORTH. THE WELL PAD WAS RECONTOURED TO MATCH THE SURROUNDING TERRAIN, THIS PROVIDES SOIL DECOMPACTION. GRADING TECHNIQUES WERE INSTALLED ON THE CONTOUR TO PROVIDE SOIL STABILIZATION, PROMOTE GROUND INFILTRATION AND PREPARES THE SOIL FOR SEEDING. (1) WATER BAR INSTALLED ACROSS THE RECLAMATION TO SLOW RUN OFF VELOCITY. THE EARTH DISTURBANCE WAS STABILIZED BY HYDRO-SEEDING USING AN APPROVED HILL RANCH SEED MIX TO PROMOTE THE ESTABLISHMENT OF VEGETATION. THE LOCATION SIGN HAS BEEN REMOVED FROM LOCATION.

GOLDEN EAGLE MINE 3N-2-95 API# 05-071-06404 – TIMBER CREEK
OGCC OPERATOR NUMBER 10672 – INSPECTION DATE: MAY 08, 2018
CORRECTIVE ACTIONS COMPLETED REGARDING COGCC FIR DOCUMENT # 680102754



PHOTO 2: THE TOP SOIL STOCKPILE WAS USED DURING RECLAMATION ACTIVITIES. THE TOP SOIL SIGN AND POST WERE REMOVED FROM LOCATION.

GOLDEN EAGLE MINE 3N-2-95 API# 05-071-06404 – TIMBER CREEK
OGCC OPERATOR NUMBER 10672 – INSPECTION DATE: MAY 07, 2018
CORRECTIVE ACTIONS COMPLETED REGARDING COGCC FIR DOCUMENT # 680102754



PHOTO 3: THE SILT FENCE AND POSTS WERE REMOVED FROM LOCATION.

GOLDEN EAGLE MINE 3N-2-95 API# 05-071-06404 – TIMBER CREEK
OGCC OPERATOR NUMBER 10672 – INSPECTION DATE: MAY 08, 2018
CORRECTIVE ACTIONS COMPLETED REGARDING COGCC FIR DOCUMENT # 680102754



PHOTO 4: THE ACCESS ROAD WAS RECONTOURED TO MATCH THE SURROUNDING TERRAIN, THIS PROVIDES SOIL DECOMPACTION AND CORRECTED THE EROSION RILL. (2) WATER BARS WERE INSTALLED TO REDUCE VELOCITY FROM RUN OFF. GRADING TECHNIQUES WERE INSTALLED ON THE CONTOUR TO STABILIZE THE SOIL, PROMOTE GROUND INFILTRATION AND PREPARES THE SOIL FOR SEEDING. THE EARTH DISTURBANCE WAS STABILIZED BY HYDRO-SEEDING USING AN APPROVED HILL RANCH SEED MIX TO PROMOTE THE ESTABLISHMENT OF VEGETATION.

GOLDEN EAGLE MINE 3N-2-95 API# 05-071-06404 – TIMBER CREEK
OGCC OPERATOR NUMBER 10672 – INSPECTION DATE: MAY 08, 2018
CORRECTIVE ACTIONS COMPLETED REGARDING COGCC FIR DOCUMENT # 680102754

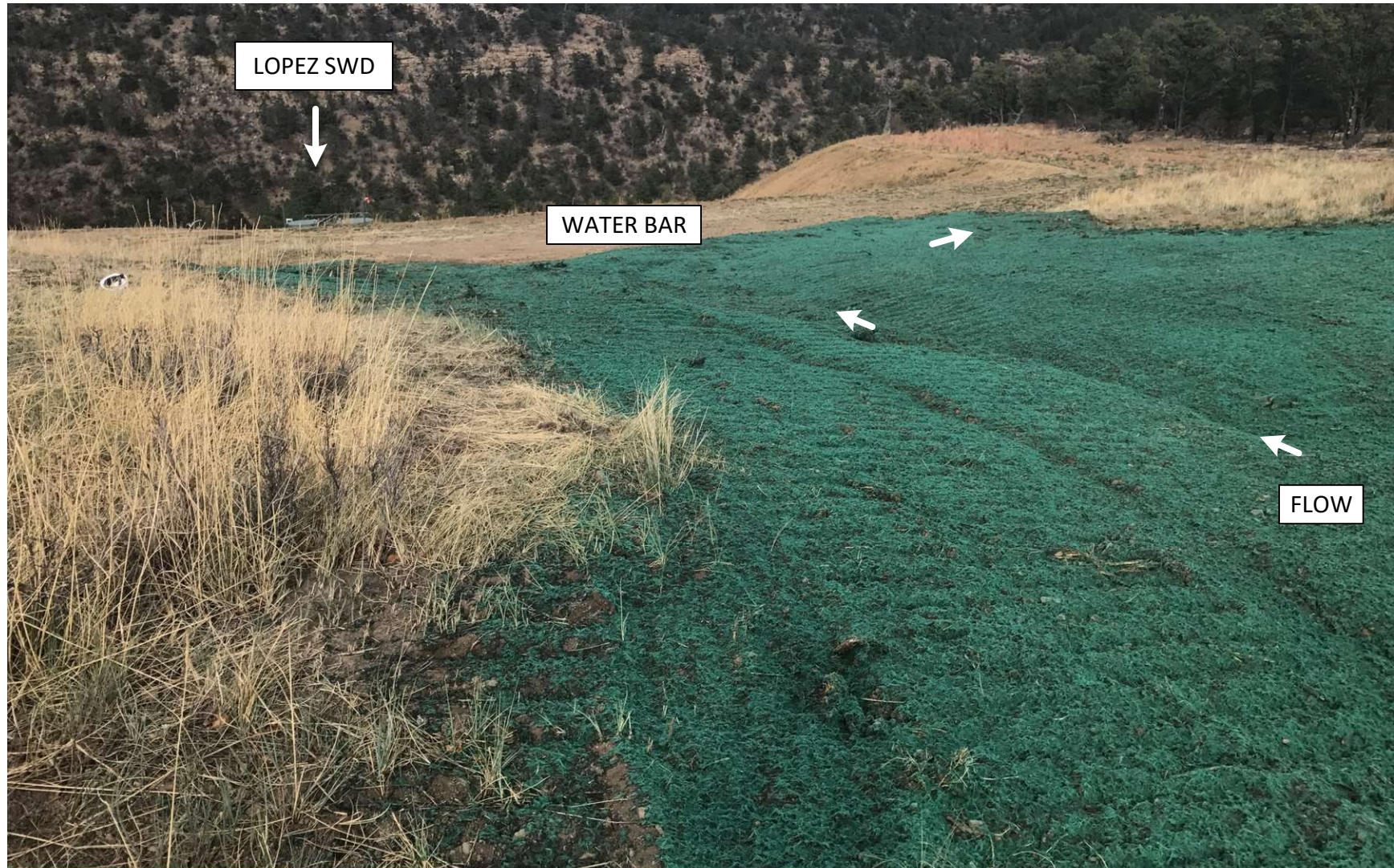


PHOTO 5: THE ACCESS ROAD WAS RECONTOURED TO MATCH THE SURROUNDING TERRAIN, THIS PROVIDES SOIL DECOMPACTION AND CORRECTED THE EROSION RILL. (1) WATER BAR WAS INSTALLED TO REDUCE VELOCITY FROM RUN OFF. GRADING TECHNIQUES WERE INSTALLED ON THE CONTOUR TO STABILIZE THE SOIL, PROMOTE GROUND INFILTRATION AND PREPARES THE SOIL FOR SEEDING. THE EARTH DISTURBANCE WAS STABILIZED BY HYDRO-SEEDING USING AN APPROVED HILL RANCH SEED MIX TO PROMOTE THE ESTABLISHMENT OF VEGETATION.

GOLDEN EAGLE MINE 3N-2-95 API# 05-071-06404 – TIMBER CREEK
OGCC OPERATOR NUMBER 10672 – INSPECTION DATE: MAY 07, 2018
CORRECTIVE ACTIONS COMPLETED REGARDING COGCC FIR DOCUMENT # 680102754



PHOTO 6: THE WELL PAD WAS RECONTOURED TO MATCH THE SURROUNDING TERRAIN. GRADING TECHNIQUES WERE INSTALLED ON THE CONTOUR TO STABILIZE THE SOIL, PROMOTE GROUND INFILTRATION AND TO PREPARE THE SOIL FOR SEEDING. THE EARTH DISTURBANCE WAS STABILIZED BY HYDRO-SEEDING USING AN APPROVED HILL RANCH SEED MIX TO PROMOTE THE ESTABLISHMENT OF VEGETATION. THESE ACTIVITIES CORRECTED THE EROSION ON THE CUT SLOPE.

GOLDEN EAGLE MINE 3N-2-95 API# 05-071-06404 – TIMBER CREEK
OGCC OPERATOR NUMBER 10672 – INSPECTION DATE: MAY 07, 2018
CORRECTIVE ACTIONS COMPLETED REGARDING COGCC FIR DOCUMENT # 680102754



PHOTO 7: THE WELL PAD WAS RECONTOURED TO MATCH THE SURROUNDING TERRAIN. GRADING TECHNIQUES WERE INSTALLED ON THE CONTOUR TO STABILIZE THE SOIL, PROMOTE GROUND INFILTRATION AND TO PREPARE THE SOIL FOR SEEDING. THE EARTH DISTURBANCE WAS STABILIZED BY HYDRO-SEEDING USING AN APPROVED HILL RANCH SEED MIX TO PROMOTE THE ESTABLISHMENT OF VEGETATION. THESE ACTIVITIES CORRECTED THE EROSION ON THE FILL SLOPE.