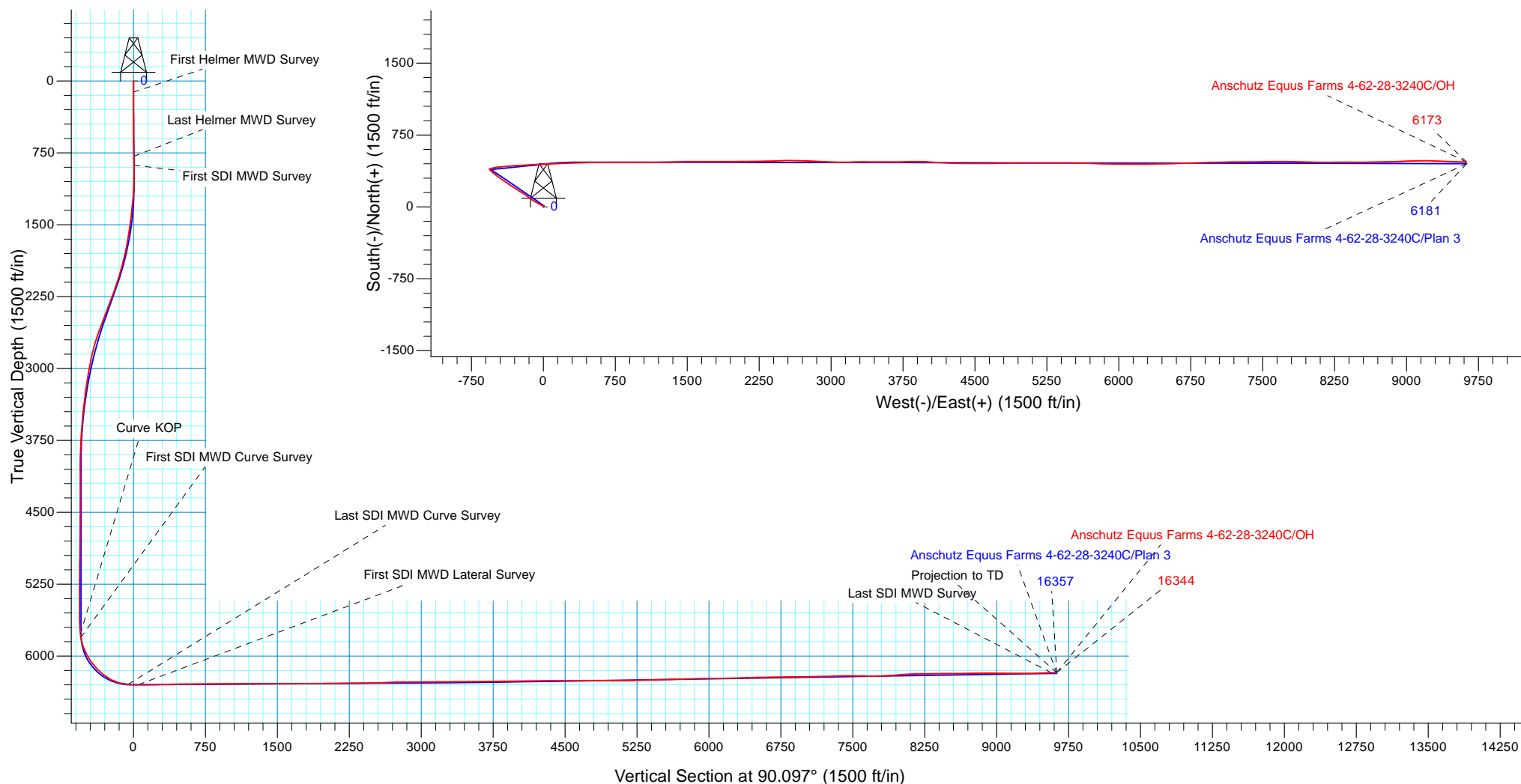


PROJECT DETAILS: Weld County, CO NAD 83	
Geodetic System:	US State Plane 1983
Datum:	North American Datum 1983
Ellipsoid:	GRS 1980
Zone:	Colorado Northern Zone
System Datum:	Mean Sea Level
Local North:	True

ANNOTATIONS								
TVD	MD	Inc	Azi	+N/-S	+E/-W	Vsect	Departure	Annotation
117.00	117.00	0.60	135.300	-0.44	0.43	0.43	0.61	First Helmer MWD Survey
785.93	786.00	0.80	84.600	6.47	4.47	4.46	10.96	Last Helmer MWD Survey
878.92	879.00	0.59	134.370	6.19	5.46	5.45	12.08	First SDI MWD Survey
5774.07	5877.00	6.96	73.595	398.33	-554.56	-555.24	719.44	Curve KOP
5806.72	5910.00	9.70	72.970	399.71	-549.99	-550.66	722.77	First SDI MWD Curve Survey
6295.86	6657.00	86.48	88.020	444.74	-56.12	-56.87	1219.61	Last SDI MWD Curve Survey
6298.03	6766.00	91.24	88.430	448.11	52.78	52.02	1328.56	First SDI MWD Lateral Survey
6174.42	16288.00	91.94	91.320	469.93	9570.04	9569.23	10848.42	Last SDI MWD Survey
6172.52	16344.00	91.94	91.320	468.64	9626.00	9625.19	10904.39	Projection to TD





**Bill Barrett Corporation**

## **Bill Barrett Corp.**

**Weld County, CO NAD 83**

**Anschutz Equus Farms 4-62-28\_27 NWSW Pad [GOOD]**

**Anschutz Equus Farms 4-62-28-3240C**

**OH**

**Design: OH**

## **Standard Survey Report**

**27 February, 2018**



**Scientific Drilling**

[www.scientificdrilling.com](http://www.scientificdrilling.com)



<b>Company:</b>	Bill Barrett Corp.	<b>Local Co-ordinate Reference:</b>	Well Anschutz Equus Farms 4-62-28-3240C
<b>Project:</b>	Weld County, CO NAD 83	<b>TVD Reference:</b>	GL 4624.3' & KB 20' @ 4644.30ft (Savanna 802)
<b>Site:</b>	Anschutz Equus Farms 4-62-28_27 NWSW Pad [GOOD]	<b>MD Reference:</b>	GL 4624.3' & KB 20' @ 4644.30ft (Savanna 802)
<b>Well:</b>	Anschutz Equus Farms 4-62-28-3240C	<b>North Reference:</b>	True
<b>Wellbore:</b>	OH	<b>Survey Calculation Method:</b>	Minimum Curvature
<b>Design:</b>	OH	<b>Database:</b>	Casper District

<b>Project</b>	Weld County, CO NAD 83		
<b>Map System:</b>	US State Plane 1983	<b>System Datum:</b>	Mean Sea Level
<b>Geo Datum:</b>	North American Datum 1983		
<b>Map Zone:</b>	Colorado Northern Zone		

<b>Site</b>	Anschutz Equus Farms 4-62-28_27 NWSW Pad [GOOD], Site Center : Anschutz Equus Farms 4-62-28-3240C		
<b>Site Position:</b>		<b>Northing:</b>	1,347,562.98 usft
<b>From:</b>	Lat/Long	<b>Easting:</b>	3,324,530.53 usft
<b>Position Uncertainty:</b>	0.00 ft	<b>Slot Radius:</b>	13.200 in
		<b>Latitude:</b>	40° 16' 53.821 N
		<b>Longitude:</b>	104° 20' 12.340 W
		<b>Grid Convergence:</b>	0.75 °

<b>Well</b>	Anschutz Equus Farms 4-62-28-3240C, 2170' FSL 486' FWL Sec 28 T4N R62W		
<b>Well Position</b>	<b>+N/-S</b>	0.00 ft	<b>Northing:</b> 1,347,562.93 usft
	<b>+E/-W</b>	0.00 ft	<b>Easting:</b> 3,324,530.53 usft
<b>Position Uncertainty</b>	0.00 ft	<b>Wellhead Elevation:</b>	0.00 ft
		<b>Ground Level:</b>	4,624.30 ft

<b>Wellbore</b>	OH		
<b>Magnetics</b>	<b>Model Name</b>	<b>Sample Date</b>	<b>Declination (°)</b>
	BGGM2016	4/18/2017	8.14
	HDGM	6/28/2017	8.27
			<b>Dip Angle (°)</b>
			66.86
			66.95
			<b>Field Strength (nT)</b>
			52,417
			52,366

<b>Design</b>	OH		
<b>Audit Notes:</b>			
<b>Version:</b>	1.0	<b>Phase:</b>	ACTUAL
		<b>Tie On Depth:</b>	0.00
<b>Vertical Section:</b>	<b>Depth From (TVD) (ft)</b>	<b>+N/-S (ft)</b>	<b>+E/-W (ft)</b>
	0.00	0.00	0.00
			<b>Direction (°)</b>
			90.097

<b>Survey Program</b>	<b>Date</b>	2/27/2018		
<b>From (ft)</b>	<b>To (ft)</b>	<b>Survey (Wellbore)</b>	<b>Tool Name</b>	<b>Description</b>
117.00	786.00	Survey #1 - Surface (OH)	OWSG MWD	OWSG MWD - Standard
879.00	6,657.00	Survey #2 - Intermediate (OH)	OWSG MWD	OWSG MWD - Standard
6,766.00	16,344.00	Survey #3 - Lateral (OH)	OWSG MWD	OWSG MWD - Standard

<b>Survey</b>									
<b>Measured Depth (ft)</b>	<b>Inclination (°)</b>	<b>Azimuth (°)</b>	<b>Vertical Depth (ft)</b>	<b>+N/-S (ft)</b>	<b>+E/-W (ft)</b>	<b>Vertical Section (ft)</b>	<b>Dogleg Rate (°/100ft)</b>	<b>Build Rate (°/100ft)</b>	<b>Turn Rate (°/100ft)</b>
0.00	0.00	0.000	0.00	0.00	0.00	0.00	0.00	0.00	0.00
117.00	0.60	135.300	117.00	-0.44	0.43	0.43	0.51	0.51	0.00
<b>First Helmer MWD Survey</b>									
212.00	0.80	350.700	211.99	-0.13	0.67	0.67	1.41	0.21	-152.21
307.00	0.40	104.600	306.99	0.44	0.89	0.89	1.08	-0.42	119.89
402.00	1.10	355.160	401.99	1.26	1.13	1.13	1.36	0.74	-115.20

<b>Company:</b>	Bill Barrett Corp.	<b>Local Co-ordinate Reference:</b>	Well Anschutz Equus Farms 4-62-28-3240C
<b>Project:</b>	Weld County, CO NAD 83	<b>TVD Reference:</b>	GL 4624.3' & KB 20' @ 4644.30ft (Savanna 802)
<b>Site:</b>	Anschutz Equus Farms 4-62-28_27 NWSW Pad [GOOD]	<b>MD Reference:</b>	GL 4624.3' & KB 20' @ 4644.30ft (Savanna 802)
<b>Well:</b>	Anschutz Equus Farms 4-62-28-3240C	<b>North Reference:</b>	True
<b>Wellbore:</b>	OH	<b>Survey Calculation Method:</b>	Minimum Curvature
<b>Design:</b>	OH	<b>Database:</b>	Casper District

Survey									
Measured Depth (ft)	Inclination (°)	Azimuth (°)	Vertical Depth (ft)	+N/-S (ft)	+E/-W (ft)	Vertical Section (ft)	Dogleg Rate (°/100ft)	Build Rate (°/100ft)	Turn Rate (°/100ft)
498.00	0.80	55.900	497.97	2.56	1.61	1.60	1.04	-0.31	63.27
593.00	1.40	11.100	592.96	4.07	2.38	2.37	1.06	0.63	-47.16
688.00	1.00	44.600	687.94	5.80	3.19	3.18	0.83	-0.42	35.26
786.00	0.80	84.600	785.93	6.47	4.47	4.46	0.66	-0.20	40.82
<b>Last Helmer MWD Survey</b>									
879.00	0.59	134.370	878.92	6.19	5.46	5.45	0.66	-0.23	53.52
<b>First SDI MWD Survey</b>									
970.00	0.67	135.420	969.92	5.49	6.17	6.16	0.09	0.09	1.15
1,061.00	1.64	271.950	1,060.90	5.15	5.24	5.23	2.39	1.07	150.03
1,243.00	6.37	298.330	1,242.42	10.04	-6.26	-6.28	2.72	2.60	14.49
1,335.00	7.36	303.050	1,333.76	15.67	-15.69	-15.72	1.24	1.08	5.13
1,426.00	7.33	301.090	1,424.01	21.85	-25.55	-25.59	0.28	-0.03	-2.15
1,517.00	8.95	295.920	1,514.09	27.94	-36.89	-36.93	1.95	1.78	-5.68
1,609.00	9.88	295.320	1,604.85	34.44	-50.46	-50.52	1.02	1.01	-0.65
1,700.00	11.60	300.180	1,694.26	42.38	-65.43	-65.50	2.13	1.89	5.34
1,792.00	14.31	299.140	1,783.91	52.57	-83.36	-83.44	2.96	2.95	-1.13
1,882.00	17.36	303.470	1,870.49	65.40	-104.28	-104.39	3.63	3.39	4.81
1,974.00	19.34	305.590	1,957.80	81.83	-128.12	-128.26	2.27	2.15	2.30
2,065.00	20.69	306.950	2,043.31	100.27	-153.22	-153.39	1.57	1.48	1.49
2,156.00	21.90	306.210	2,128.09	119.96	-179.76	-179.96	1.36	1.33	-0.81
2,248.00	22.43	302.660	2,213.30	139.57	-208.38	-208.62	1.57	0.58	-3.86
2,339.00	23.67	301.900	2,297.03	158.59	-238.51	-238.77	1.40	1.36	-0.84
2,432.00	24.80	302.720	2,381.83	179.00	-270.77	-271.07	1.27	1.22	0.88
2,526.00	25.52	301.680	2,466.91	200.29	-304.58	-304.92	0.90	0.77	-1.11
2,619.00	25.09	302.850	2,550.99	221.50	-338.20	-338.57	0.71	-0.46	1.26
2,714.00	22.82	305.060	2,637.80	243.02	-370.20	-370.61	2.57	-2.39	2.33
2,808.00	19.49	306.370	2,725.46	262.79	-397.76	-398.20	3.58	-3.54	1.39
2,903.00	17.37	305.110	2,815.58	280.35	-422.12	-422.60	2.27	-2.23	-1.33
2,997.00	14.90	304.970	2,905.87	295.35	-443.51	-444.01	2.63	-2.63	-0.15
3,090.00	11.78	304.730	2,996.35	307.61	-461.11	-461.63	3.36	-3.35	-0.26
3,185.00	10.97	305.520	3,089.48	318.39	-476.44	-476.98	0.87	-0.85	0.83
3,278.00	10.22	303.190	3,180.90	328.05	-490.55	-491.10	0.93	-0.81	-2.51
3,372.00	9.17	310.860	3,273.56	337.51	-503.19	-503.76	1.77	-1.12	8.16
3,466.00	8.65	311.950	3,366.42	347.14	-514.11	-514.70	0.58	-0.55	1.16
3,560.00	7.56	312.350	3,459.48	356.03	-523.94	-524.54	1.16	-1.16	0.43
3,654.00	7.26	314.410	3,552.70	364.35	-532.75	-533.37	0.43	-0.32	2.19
3,748.00	6.17	309.650	3,646.05	371.73	-540.89	-541.51	1.30	-1.16	-5.06
3,842.00	4.55	312.990	3,739.64	377.50	-547.50	-548.14	1.75	-1.72	3.55
3,936.00	2.15	313.100	3,833.47	381.24	-551.52	-552.16	2.55	-2.55	0.12
4,030.00	1.61	298.670	3,927.42	383.08	-553.96	-554.61	0.76	-0.57	-15.35

<b>Company:</b>	Bill Barrett Corp.	<b>Local Co-ordinate Reference:</b>	Well Anschutz Equus Farms 4-62-28-3240C
<b>Project:</b>	Weld County, CO NAD 83	<b>TVD Reference:</b>	GL 4624.3' & KB 20' @ 4644.30ft (Savanna 802)
<b>Site:</b>	Anschutz Equus Farms 4-62-28_27 NWSW Pad [GOOD]	<b>MD Reference:</b>	GL 4624.3' & KB 20' @ 4644.30ft (Savanna 802)
<b>Well:</b>	Anschutz Equus Farms 4-62-28-3240C	<b>North Reference:</b>	True
<b>Wellbore:</b>	OH	<b>Survey Calculation Method:</b>	Minimum Curvature
<b>Design:</b>	OH	<b>Database:</b>	Casper District

Survey									
Measured Depth (ft)	Inclination (°)	Azimuth (°)	Vertical Depth (ft)	+N/-S (ft)	+E/-W (ft)	Vertical Section (ft)	Dogleg Rate (°/100ft)	Build Rate (°/100ft)	Turn Rate (°/100ft)
4,124.00	0.65	9.040	4,021.40	384.24	-555.04	-555.69	1.62	-1.02	74.86
4,218.00	0.82	26.070	4,115.40	385.37	-554.66	-555.31	0.29	0.18	18.12
4,312.00	0.82	3.290	4,209.39	386.65	-554.33	-554.98	0.34	0.00	-24.23
4,406.00	0.94	357.090	4,303.38	388.09	-554.33	-554.98	0.16	0.13	-6.60
4,500.00	1.29	355.560	4,397.36	389.91	-554.45	-555.11	0.37	0.37	-1.63
4,594.00	0.40	285.770	4,491.35	391.06	-554.84	-555.51	1.29	-0.95	-74.24
4,689.00	0.34	297.270	4,586.35	391.28	-555.41	-556.08	0.10	-0.06	12.11
4,783.00	0.50	281.510	4,680.34	391.49	-556.06	-556.73	0.21	0.17	-16.77
4,877.00	0.39	264.380	4,774.34	391.54	-556.78	-557.45	0.18	-0.12	-18.22
4,971.00	0.61	283.120	4,868.34	391.62	-557.59	-558.25	0.29	0.23	19.94
5,064.00	0.75	296.250	4,961.33	392.00	-558.62	-559.28	0.22	0.15	14.12
5,158.00	0.44	277.800	5,055.33	392.32	-559.53	-560.19	0.38	-0.33	-19.63
5,252.00	0.44	280.740	5,149.32	392.44	-560.24	-560.90	0.02	0.00	3.13
5,346.00	0.44	294.480	5,243.32	392.66	-560.92	-561.59	0.11	0.00	14.62
5,440.00	0.43	358.090	5,337.32	393.16	-561.26	-561.93	0.49	-0.01	67.67
5,534.00	0.46	6.980	5,431.32	393.89	-561.23	-561.90	0.08	0.03	9.46
5,628.00	0.87	358.000	5,525.31	394.97	-561.21	-561.88	0.45	0.44	-9.55
5,722.00	0.78	27.750	5,619.30	396.25	-560.94	-561.61	0.46	-0.10	31.65
5,816.00	1.90	79.470	5,713.28	397.10	-559.11	-559.78	1.64	1.19	55.02
5,877.00	6.96	73.595	5,774.07	398.33	-554.56	-555.24	8.31	8.29	-9.63
<b>Curve KOP</b>									
5,910.00	9.70	72.970	5,806.72	399.71	-549.99	-550.66	8.31	8.31	-1.89
<b>First SDI MWD Curve Survey</b>									
6,003.00	20.55	73.930	5,896.37	406.55	-526.74	-527.43	11.67	11.67	1.03
6,097.00	27.47	82.250	5,982.21	414.05	-489.35	-490.05	8.18	7.36	8.85
6,191.00	35.65	85.450	6,062.24	419.15	-440.47	-441.18	8.88	8.70	3.40
6,285.00	44.69	85.750	6,133.99	423.78	-380.08	-380.80	9.62	9.62	0.32
6,379.00	51.16	86.030	6,196.95	428.77	-310.52	-311.25	6.89	6.88	0.30
6,472.00	62.40	85.810	6,247.82	434.31	-233.04	-233.78	12.09	12.09	-0.24
6,566.00	75.42	86.300	6,281.57	440.31	-145.73	-146.48	13.86	13.85	0.52
6,657.00	86.48	88.020	6,295.86	444.74	-56.12	-56.87	12.30	12.15	1.89
<b>Last SDI MWD Curve Survey</b>									
6,766.00	91.24	88.430	6,298.03	448.11	52.78	52.02	4.38	4.37	0.38
<b>First SDI MWD Lateral Survey</b>									
6,860.00	89.19	87.490	6,297.68	451.46	146.71	145.94	2.40	-2.18	-1.00
6,954.00	90.13	87.460	6,298.24	455.60	240.61	239.84	1.00	1.00	-0.03
7,048.00	90.97	88.290	6,297.33	459.09	334.54	333.77	1.26	0.89	0.88
7,142.00	91.81	88.170	6,295.05	461.99	428.47	427.69	0.90	0.89	-0.13
7,236.00	91.61	89.310	6,292.25	464.05	522.40	521.62	1.23	-0.21	1.21
7,329.00	90.27	90.320	6,290.72	464.35	615.39	614.60	1.80	-1.44	1.09

<b>Company:</b>	Bill Barrett Corp.	<b>Local Co-ordinate Reference:</b>	Well Anschutz Equus Farms 4-62-28-3240C
<b>Project:</b>	Weld County, CO NAD 83	<b>TVD Reference:</b>	GL 4624.3' & KB 20' @ 4644.30ft (Savanna 802)
<b>Site:</b>	Anschutz Equus Farms 4-62-28_27 NWSW Pad [GOOD]	<b>MD Reference:</b>	GL 4624.3' & KB 20' @ 4644.30ft (Savanna 802)
<b>Well:</b>	Anschutz Equus Farms 4-62-28-3240C	<b>North Reference:</b>	True
<b>Wellbore:</b>	OH	<b>Survey Calculation Method:</b>	Minimum Curvature
<b>Design:</b>	OH	<b>Database:</b>	Casper District

Survey										
Measured Depth (ft)	Inclination (°)	Azimuth (°)	Vertical Depth (ft)	+N/-S (ft)	+E/-W (ft)	Vertical Section (ft)	Dogleg Rate (°/100ft)	Build Rate (°/100ft)	Turn Rate (°/100ft)	
7,422.00	89.77	89.790	6,290.69	464.27	708.39	707.60	0.78	-0.54	-0.57	
7,516.00	89.97	90.000	6,290.90	464.44	802.39	801.60	0.31	0.21	0.22	
7,609.00	90.03	90.260	6,290.90	464.23	895.39	894.60	0.29	0.06	0.28	
7,703.00	90.44	89.970	6,290.52	464.04	989.39	988.60	0.53	0.44	-0.31	
7,797.00	90.50	90.510	6,289.75	463.64	1,083.38	1,082.59	0.58	0.06	0.57	
7,891.00	90.27	87.660	6,289.12	465.15	1,177.36	1,176.57	3.04	-0.24	-3.03	
7,985.00	89.80	90.100	6,289.06	466.98	1,271.33	1,270.54	2.64	-0.50	2.60	
8,080.00	89.70	87.530	6,289.47	468.95	1,366.30	1,365.51	2.71	-0.11	-2.71	
8,173.00	89.93	87.700	6,289.77	472.82	1,459.22	1,458.42	0.31	0.25	0.18	
8,267.00	90.67	91.140	6,289.28	473.77	1,553.20	1,552.40	3.74	0.79	3.66	
8,361.00	89.83	89.340	6,288.87	473.38	1,647.19	1,646.39	2.11	-0.89	-1.91	
8,454.00	89.90	90.510	6,289.09	473.50	1,740.19	1,739.39	1.26	0.08	1.26	
8,549.00	90.03	90.550	6,289.15	472.62	1,835.19	1,834.39	0.14	0.14	0.04	
8,643.00	90.70	89.660	6,288.55	472.45	1,929.18	1,928.38	1.19	0.71	-0.95	
8,737.00	90.30	89.030	6,287.73	473.52	2,023.17	2,022.37	0.79	-0.43	-0.67	
8,830.00	90.64	89.360	6,286.97	474.83	2,116.16	2,115.36	0.51	0.37	0.35	
8,924.00	90.94	89.440	6,285.67	475.81	2,210.15	2,209.34	0.33	0.32	0.09	
9,018.00	90.77	89.980	6,284.27	476.29	2,304.14	2,303.33	0.60	-0.18	0.57	
9,112.00	89.66	86.930	6,283.91	478.82	2,398.09	2,397.27	3.45	-1.18	-3.24	
9,206.00	91.51	88.840	6,282.95	482.29	2,492.01	2,491.19	2.83	1.97	2.03	
9,300.00	92.82	89.970	6,279.40	483.27	2,585.94	2,585.11	1.84	1.39	1.20	
9,393.00	92.31	91.720	6,275.24	481.90	2,678.83	2,678.01	1.96	-0.55	1.88	
9,487.00	91.07	92.460	6,272.47	478.47	2,772.72	2,771.91	1.54	-1.32	0.79	
9,581.00	91.01	92.670	6,270.76	474.26	2,866.61	2,865.81	0.23	-0.06	0.22	
9,675.00	89.23	92.290	6,270.57	470.20	2,960.52	2,959.72	1.94	-1.89	-0.40	
9,769.00	90.13	90.690	6,271.09	467.75	3,054.48	3,053.69	1.95	0.96	-1.70	
9,863.00	90.10	89.450	6,270.90	467.64	3,148.48	3,147.68	1.32	-0.03	-1.32	
9,956.00	91.14	88.840	6,269.90	469.02	3,241.46	3,240.66	1.30	1.12	-0.66	
10,049.00	91.21	90.590	6,267.99	469.49	3,334.44	3,333.64	1.88	0.08	1.88	
10,143.00	89.83	90.600	6,267.14	468.51	3,428.43	3,427.63	1.47	-1.47	0.01	
10,237.00	89.87	89.420	6,267.38	468.49	3,522.43	3,521.63	1.26	0.04	-1.26	
10,331.00	90.84	90.650	6,266.80	468.44	3,616.42	3,615.62	1.67	1.03	1.31	
10,422.00	91.04	88.680	6,265.31	468.97	3,707.40	3,706.60	2.18	0.22	-2.16	
10,513.00	90.94	88.130	6,263.73	471.50	3,798.35	3,797.55	0.61	-0.11	-0.60	
10,604.00	90.57	89.760	6,262.54	473.18	3,889.33	3,888.52	1.84	-0.41	1.79	
10,696.00	91.44	92.880	6,260.92	471.06	3,981.28	3,980.47	3.52	0.95	3.39	
10,787.00	89.93	93.230	6,259.83	466.21	4,072.14	4,071.34	1.70	-1.66	0.38	
10,878.00	90.30	94.010	6,259.65	460.46	4,162.95	4,162.17	0.95	0.41	0.86	
10,969.00	89.83	92.160	6,259.55	455.57	4,253.82	4,253.04	2.10	-0.52	-2.03	

<b>Company:</b>	Bill Barrett Corp.	<b>Local Co-ordinate Reference:</b>	Well Anschutz Equus Farms 4-62-28-3240C
<b>Project:</b>	Weld County, CO NAD 83	<b>TVD Reference:</b>	GL 4624.3' & KB 20' @ 4644.30ft (Savanna 802)
<b>Site:</b>	Anschutz Equus Farms 4-62-28_27 NWSW Pad [GOOD]	<b>MD Reference:</b>	GL 4624.3' & KB 20' @ 4644.30ft (Savanna 802)
<b>Well:</b>	Anschutz Equus Farms 4-62-28-3240C	<b>North Reference:</b>	True
<b>Wellbore:</b>	OH	<b>Survey Calculation Method:</b>	Minimum Curvature
<b>Design:</b>	OH	<b>Database:</b>	Casper District

Survey									
Measured Depth (ft)	Inclination (°)	Azimuth (°)	Vertical Depth (ft)	+N/-S (ft)	+E/-W (ft)	Vertical Section (ft)	Dogleg Rate (°/100ft)	Build Rate (°/100ft)	Turn Rate (°/100ft)
11,059.00	90.50	90.500	6,259.29	453.48	4,343.79	4,343.02	1.99	0.74	-1.84
11,150.00	91.34	90.900	6,257.83	452.37	4,434.77	4,434.00	1.02	0.92	0.44
11,241.00	90.34	88.960	6,256.49	452.48	4,525.76	4,524.98	2.40	-1.10	-2.13
11,333.00	90.40	89.410	6,255.90	453.79	4,617.74	4,616.97	0.49	0.07	0.49
11,424.00	89.87	89.260	6,255.68	454.84	4,708.74	4,707.96	0.61	-0.58	-0.16
11,515.00	90.03	89.430	6,255.76	455.88	4,799.73	4,798.95	0.26	0.18	0.19
11,606.00	89.00	89.290	6,256.53	456.90	4,890.72	4,889.94	1.14	-1.13	-0.15
11,698.00	90.27	89.730	6,257.12	457.68	4,982.71	4,981.93	1.46	1.38	0.48
11,789.00	89.50	89.980	6,257.30	457.92	5,073.71	5,072.93	0.89	-0.85	0.27
11,880.00	91.47	90.450	6,256.53	457.57	5,164.70	5,163.92	2.23	2.16	0.52
11,972.00	91.51	89.550	6,254.14	457.57	5,256.67	5,255.89	0.98	0.04	-0.98
12,063.00	91.84	88.820	6,251.48	458.87	5,347.62	5,346.84	0.88	0.36	-0.80
12,154.00	91.34	90.990	6,248.95	459.02	5,438.58	5,437.80	2.45	-0.55	2.38
12,246.00	91.34	90.960	6,246.80	457.45	5,530.54	5,529.76	0.03	0.00	-0.03
12,337.00	91.11	90.730	6,244.86	456.11	5,621.51	5,620.73	0.36	-0.25	-0.25
12,428.00	93.56	92.630	6,241.15	453.45	5,712.39	5,711.61	3.41	2.69	2.09
12,520.00	90.77	91.460	6,237.68	450.17	5,804.25	5,803.48	3.29	-3.03	-1.27
12,611.00	90.67	90.610	6,236.53	448.52	5,895.23	5,894.46	0.94	-0.11	-0.93
12,702.00	90.77	89.940	6,235.39	448.09	5,986.22	5,985.45	0.74	0.11	-0.74
12,794.00	90.64	90.150	6,234.26	448.02	6,078.21	6,077.45	0.27	-0.14	0.23
12,885.00	91.34	90.380	6,232.68	447.59	6,169.20	6,168.43	0.81	0.77	0.25
12,976.00	91.37	90.350	6,230.53	447.02	6,260.17	6,259.41	0.05	0.03	-0.03
13,067.00	91.27	89.610	6,228.44	447.05	6,351.15	6,350.38	0.82	-0.11	-0.81
13,159.00	91.48	89.090	6,226.23	448.09	6,443.11	6,442.35	0.61	0.23	-0.57
13,250.00	91.57	88.350	6,223.81	450.12	6,534.06	6,533.29	0.82	0.10	-0.81
13,341.00	91.48	87.360	6,221.38	453.53	6,624.96	6,624.18	1.09	-0.10	-1.09
13,432.00	91.01	88.600	6,219.41	456.73	6,715.88	6,715.10	1.46	-0.52	1.36
13,523.00	90.60	87.790	6,218.13	459.60	6,806.83	6,806.04	1.00	-0.45	-0.89
13,614.00	89.77	87.450	6,217.83	463.38	6,897.75	6,896.95	0.99	-0.91	-0.37
13,705.00	91.04	88.800	6,217.19	466.36	6,988.69	6,987.89	2.04	1.40	1.48
13,797.00	91.37	89.520	6,215.26	467.70	7,080.66	7,079.86	0.86	0.36	0.78
13,888.00	91.14	89.300	6,213.26	468.64	7,171.63	7,170.83	0.35	-0.25	-0.24
13,979.00	91.64	90.220	6,211.06	469.02	7,262.60	7,261.80	1.15	0.55	1.01
14,071.00	92.15	90.080	6,208.01	468.78	7,354.55	7,353.75	0.57	0.55	-0.15
14,161.00	89.03	88.500	6,207.09	469.90	7,444.53	7,443.72	3.89	-3.47	-1.76
14,253.00	89.77	89.330	6,208.05	471.64	7,536.50	7,535.70	1.21	0.80	0.90
14,344.00	88.73	88.870	6,209.24	473.07	7,627.48	7,626.67	1.25	-1.14	-0.51
14,435.00	89.97	91.140	6,210.27	473.06	7,718.47	7,717.66	2.84	1.36	2.49
14,526.00	92.65	90.930	6,208.19	471.42	7,809.42	7,808.61	2.95	2.95	-0.23

<b>Company:</b>	Bill Barrett Corp.	<b>Local Co-ordinate Reference:</b>	Well Anschutz Equus Farms 4-62-28-3240C
<b>Project:</b>	Weld County, CO NAD 83	<b>TVD Reference:</b>	GL 4624.3' & KB 20' @ 4644.30ft (Savanna 802)
<b>Site:</b>	Anschutz Equus Farms 4-62-28_27 NWSW Pad [GOOD]	<b>MD Reference:</b>	GL 4624.3' & KB 20' @ 4644.30ft (Savanna 802)
<b>Well:</b>	Anschutz Equus Farms 4-62-28-3240C	<b>North Reference:</b>	True
<b>Wellbore:</b>	OH	<b>Survey Calculation Method:</b>	Minimum Curvature
<b>Design:</b>	OH	<b>Database:</b>	Casper District

Survey										
Measured Depth (ft)	Inclination (°)	Azimuth (°)	Vertical Depth (ft)	+N/-S (ft)	+E/-W (ft)	Vertical Section (ft)	Dogleg Rate (°/100ft)	Build Rate (°/100ft)	Turn Rate (°/100ft)	
14,618.00	94.70	91.160	6,202.30	469.74	7,901.21	7,900.41	2.24	2.23	0.25	
14,709.00	93.96	91.280	6,195.43	467.81	7,991.93	7,991.13	0.82	-0.81	0.13	
14,800.00	93.29	90.350	6,189.67	466.52	8,082.74	8,081.94	1.26	-0.74	-1.02	
14,891.00	90.34	90.220	6,186.79	466.07	8,173.68	8,172.88	3.24	-3.24	-0.14	
14,982.00	90.84	88.900	6,185.85	466.77	8,264.67	8,263.87	1.55	0.55	-1.45	
15,073.00	90.80	90.370	6,184.55	467.35	8,355.66	8,354.86	1.62	-0.04	1.62	
15,165.00	91.11	90.020	6,183.02	467.03	8,447.65	8,446.84	0.51	0.34	-0.38	
15,256.00	89.46	89.630	6,182.57	467.31	8,538.64	8,537.84	1.86	-1.81	-0.43	
15,347.00	90.44	89.750	6,182.65	467.80	8,629.64	8,628.84	1.08	1.08	0.13	
15,439.00	90.50	88.700	6,181.89	469.05	8,721.63	8,720.82	1.14	0.07	-1.14	
15,530.00	91.17	88.850	6,180.56	470.99	8,812.60	8,811.79	0.75	0.74	0.16	
15,620.00	90.87	88.060	6,178.96	473.42	8,902.55	8,901.73	0.94	-0.33	-0.88	
15,712.00	88.53	87.270	6,179.44	477.17	8,994.46	8,993.64	2.68	-2.54	-0.86	
15,803.00	89.56	88.440	6,180.96	480.57	9,085.38	9,084.56	1.71	1.13	1.29	
15,896.00	89.70	90.010	6,181.56	481.83	9,178.37	9,177.54	1.69	0.15	1.69	
15,990.00	89.80	92.070	6,181.97	480.12	9,272.35	9,271.52	2.19	0.11	2.19	
16,083.00	90.84	92.210	6,181.45	476.65	9,365.28	9,364.46	1.13	1.12	0.15	
16,177.00	92.35	91.930	6,178.84	473.26	9,459.18	9,458.37	1.63	1.61	-0.30	
16,270.00	92.28	91.610	6,175.08	470.39	9,552.06	9,551.25	0.35	-0.08	-0.34	
16,288.00	91.94	91.320	6,174.42	469.93	9,570.04	9,569.23	2.48	-1.89	-1.61	
Last SDI MWD Survey										
16,344.00	91.94	91.320	6,172.52	468.64	9,626.00	9,625.19	0.00	0.00	0.00	
Projection to TD										

Design Annotations					
Measured Depth (ft)	Vertical Depth (ft)	Local Coordinates			
		+N/-S (ft)	+E/-W (ft)	Comment	
117.00	117.00	-0.44	0.43	First Helmer MWD Survey	
786.00	785.93	6.47	4.47	Last Helmer MWD Survey	
879.00	878.92	6.19	5.46	First SDI MWD Survey	
5,877.00	5,774.07	398.33	-554.56	Curve KOP	
5,910.00	5,806.72	399.71	-549.99	First SDI MWD Curve Survey	
6,657.00	6,295.86	444.74	-56.12	Last SDI MWD Curve Survey	
6,766.00	6,298.03	448.11	52.78	First SDI MWD Lateral Survey	
16,288.00	6,174.42	469.93	9,570.04	Last SDI MWD Survey	
16,344.00	6,172.52	468.64	9,626.00	Projection to TD	

Checked By: \_\_\_\_\_ Approved By: \_\_\_\_\_ Date: \_\_\_\_\_