

**WELL LOCATION DATA:**  
 LATITUDE: 39.73335°N  
 LONGITUDE: -104.67698°W  
 ELEVATION: 5584'  
 PDOP: 1.554  
 OPERATOR: D.WIMMER  
 SURFACE USE: AGRICULTURAL

#### LAND SURVEYOR'S CERTIFICATION

LAMP, RYNEARSON & ASSOCIATES, INC., OF FT. COLLINS, COLORADO HAS, IN ACCORDANCE WITH A REQUEST FROM RYAN BRUNER, AXIS EXPLORATION, DETERMINED THE SURFACE LOCATION OF THE WELL DESIGNATED AS JAMASO 4-65 5-6-2 TO BE 2427' FROM THE NORTH LINE AND 373' FROM THE WEST LINE OF SECTION 4, TOWNSHIP 4 SOUTH, RANGE 65 WEST OF THE 6TH P.M., ARAPAHOE COUNTY, COLORADO.



0 1000  
 SCALE: 1"= 1000'  
 U.S. SURVEY FEET

PETER ELLIOTT PAULUS COLORADO PLS 38318  
 DATE OF SURVEY: 01/09/2018 (SECTION CONTROL)  
 DATE OF SURVEY: 01/18/2018 (WELL LOCATION)

#### NOTES:

- DISTANCES ARE MEASURED PERPENDICULAR TO NEAREST SECTION LINE AND ARE SHOWN ON THE SAME SIDE OF THE SECTION LINE WHERE THE WELL IS LOCATED.
- THIS MAP DOES NOT REPRESENT A MONUMENTED BOUNDARY SURVEY. SIXTEENTH CORNER LOCATIONS ARE COMPUTED, UNLESS OTHERWISE NOTED.
- BOTTOM HOLE LOCATIONS AND HORIZONTAL COMPLETION ZONE PROVIDED BY OTHERS.
- ALL REBAR AND CAPS ARE MEASURED IN INCHES

#### BASIS OF BEARING:

THE WEST LINE OF THE SOUTHWEST QUARTER OF SECTION 4-T4S-R65W BEARS N00°22'38"W FOR 2647.43 FT BETWEEN THE SOUTHWEST CORNER OF SECTION 4 MONUMENTED WITH 2 1/2" A.C. IN R.B. STAMPED "PLS 29430" AND THE WEST QUARTER CORNER OF SECTION 4 MONUMENTED WITH 3 1/4" A.C. IN R.B. STAMPED "LS 34178" BASED ON THE COLORADO CENTRAL 0502 STATE PLANE COORDINATE SYSTEM.

ELEVATIONS ARE BASED ON NAVD 88, AS OBSERVED FROM GPS OBSERVATIONS



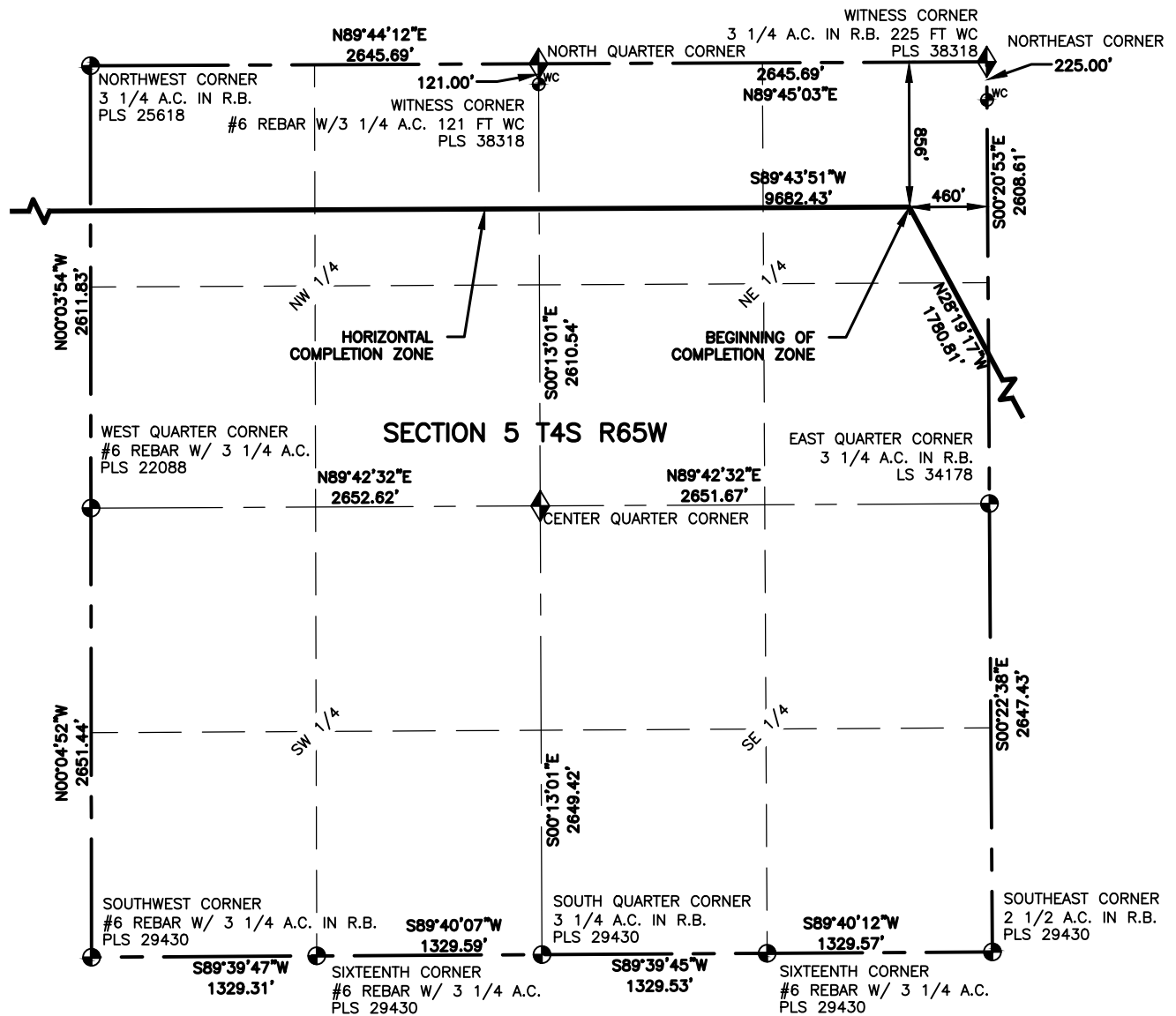
**LAMP RYNEARSON**  
 & ASSOCIATES

4715 Innovation Drive 970.226.0342 | P  
 Fort Collins, CO 80525 970.226.0879 | F  
 www.LRA-inc.com

PROPOSED WELL LOCATION EXHIBIT  
 JAMASO 4-65 5-6-2  
 1 OF 3

DRAWN BY: CPP  
 DATE: 03/30  
 COGCC ID: 0218003.03  
 PROJECT - TASK NUMBER: 0218003.03  
 BOOK AND PAGE: 0218003.03 WP-E1.dwg

**SURFACE - LOCATION**  
 NW/4 SW/4 SEC 4 T4S R65W,  
 CITY OF AURORA



### LEGEND

- ⊙ ALIQUOT CORNER
- ⊙ PROPOSED WELL
- ⬠ COMPUTED ALIQUOT CORNER
- A.C. ALUMINUM CAP
- ⊙ BOTTOM HOLE
- R.B. RANGE BOX

### NOTES:

- DISTANCES ARE MEASURED PERPENDICULAR TO NEAREST SECTION LINE AND ARE SHOWN ON THE SAME SIDE OF THE SECTION LINE WHERE THE WELL IS LOCATED.
- THIS MAP DOES NOT REPRESENT A MONUMENTED BOUNDARY SURVEY. SIXTEENTH CORNER LOCATIONS ARE COMPUTED, UNLESS OTHERWISE NOTED.
- BOTTOM HOLE LOCATIONS AND HORIZONTAL COMPLETION ZONE PROVIDED BY OTHERS.
- ALL REBAR AND CAPS ARE MEASURED IN INCHES.



0 1000  
SCALE: 1" = 1000'  
U.S. SURVEY FEET



**LAMP RYNEARSON**  
& ASSOCIATES

4715 Innovation Drive 970.226.0342 | P  
Fort Collins, CO 80525 970.226.0879 | F  
www.LRA-inc.com

PROPOSED WELL LOCATION EXHIBIT  
JAMASO 4-65 5-6-2  
2 OF 3

DRAWN BY  
CPP

DATE

COGCC ID

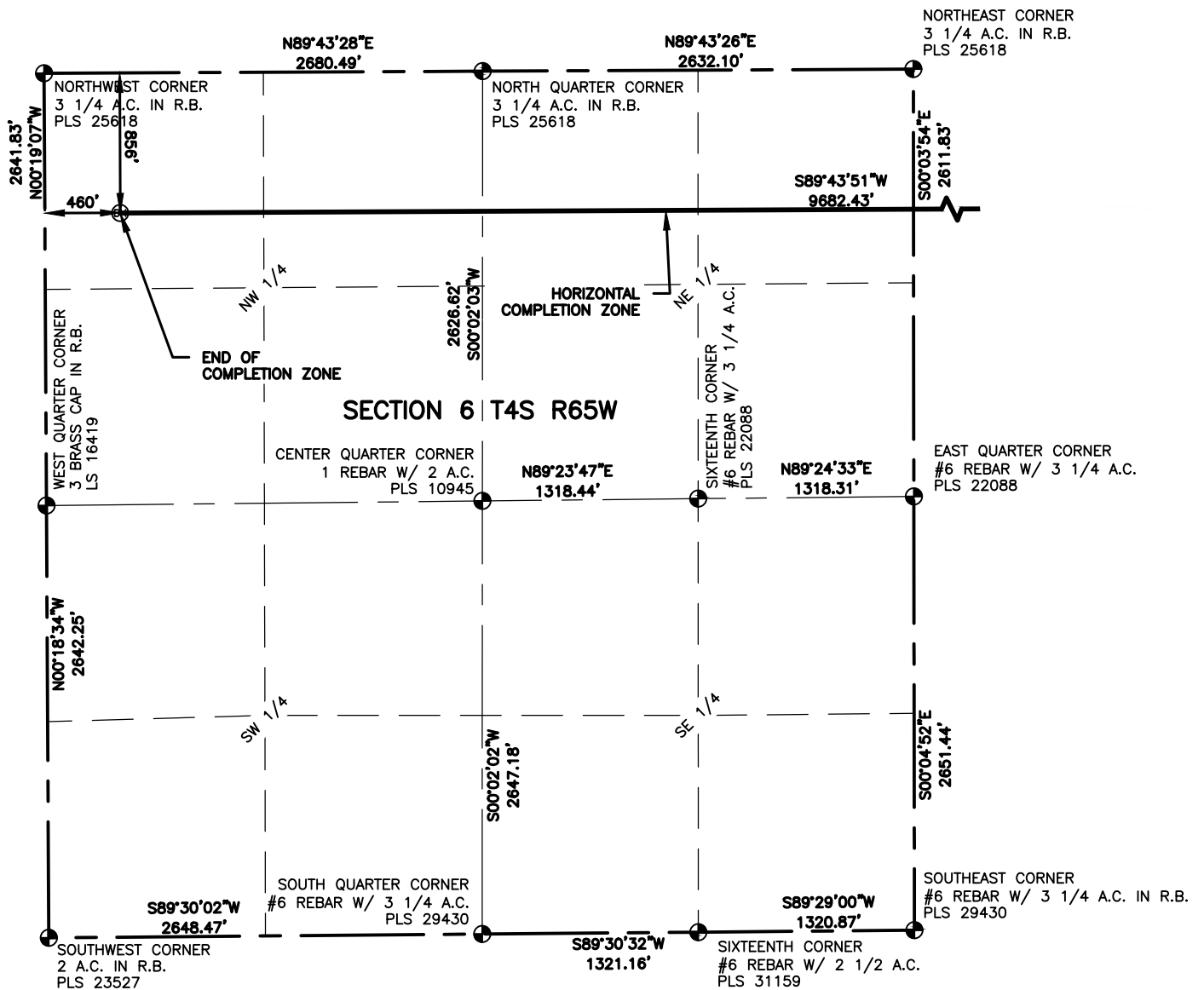
PROJECT - TASK NUMBER  
0218003.03

BOOK AND PAGE

SURFACE - LOCATION

PATH\FILENAME L:\Engineering\0218003.03 XOG - Jamaso\SURVEY\DRAWINGS\EXHIBITS\0218003.03 WP-E2.dwg

NW/4 SW/4 SEC 4 T4S R65W,  
CITY OF AURORA

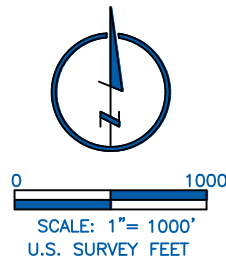


### LEGEND

- ⊙ ALIQUOT CORNER
- ⊙ PROPOSED WELL
- ⬠ COMPUTED ALIQUOT CORNER
- A.C. ALUMINUM CAP
- ⊙ BOTTOM HOLE
- R.B. RANGE BOX

### NOTES:

- DISTANCES ARE MEASURED PERPENDICULAR TO NEAREST SECTION LINE AND ARE SHOWN ON THE SAME SIDE OF THE SECTION LINE WHERE THE WELL IS LOCATED.
- THIS MAP DOES NOT REPRESENT A MONUMENTED BOUNDARY SURVEY. SIXTEENTH CORNER LOCATIONS ARE COMPUTED, UNLESS OTHERWISE NOTED.
- BOTTOM HOLE LOCATIONS AND HORIZONTAL COMPLETION ZONE PROVIDED BY OTHERS.
- ALL REBAR AND CAPS ARE MEASURED IN INCHES.



**LAMP RYNEARSON**  
& ASSOCIATES

4715 Innovation Drive 970.226.0342 | P  
Fort Collins, CO 80525 970.226.0879 | F  
www.LRA-inc.com

PROPOSED WELL LOCATION EXHIBIT  
JAMASO 4-65 5-6-2  
3 OF 3

DRAWN BY  
CPP

DATE  
03/30

COGCC ID

PROJECT - TASK NUMBER  
0218003.03

BOOK AND PAGE

**SURFACE - LOCATION**  
NW/4 SW/4 SEC 4 T4S R65W,  
CITY OF AURORA

PATH/FILENAME L:\Engineering\0218003.03 XOG - Jamaso\SURVEY\DRAWINGS\EXHIBITS\0218003.03 WP-E3.dwg