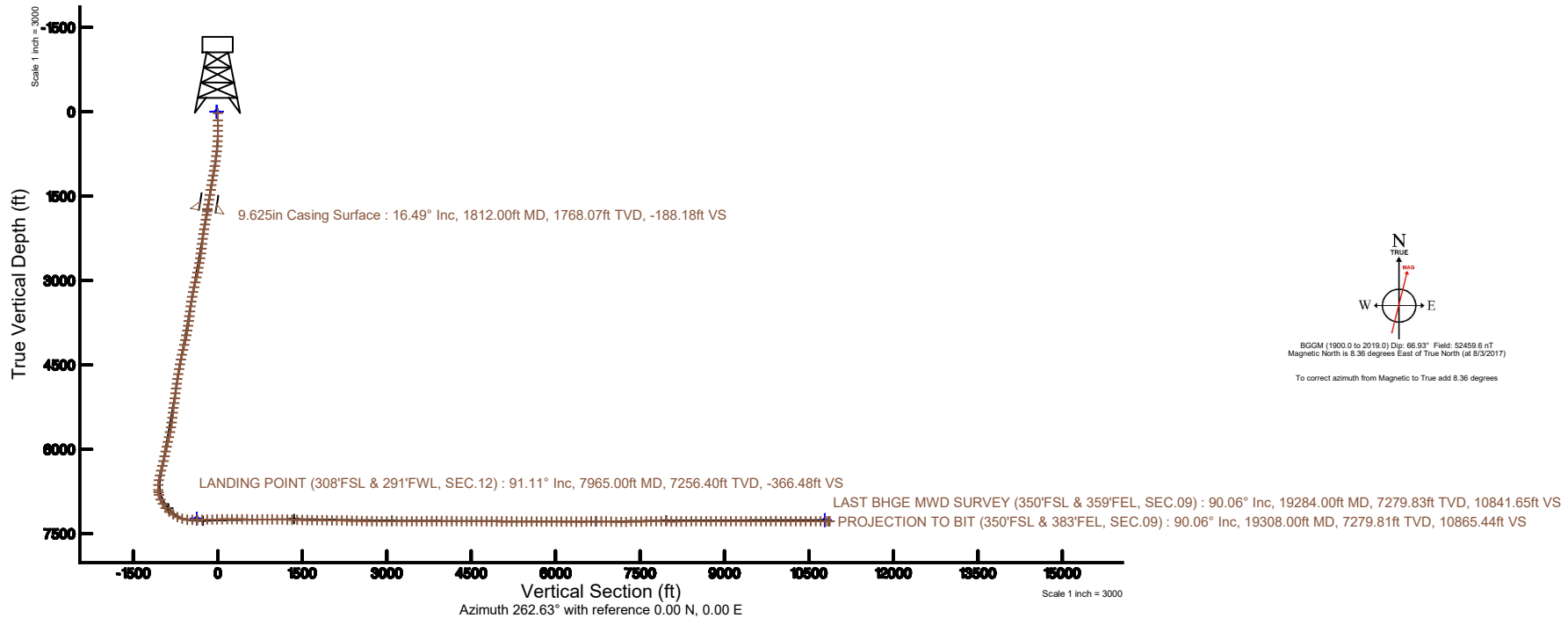
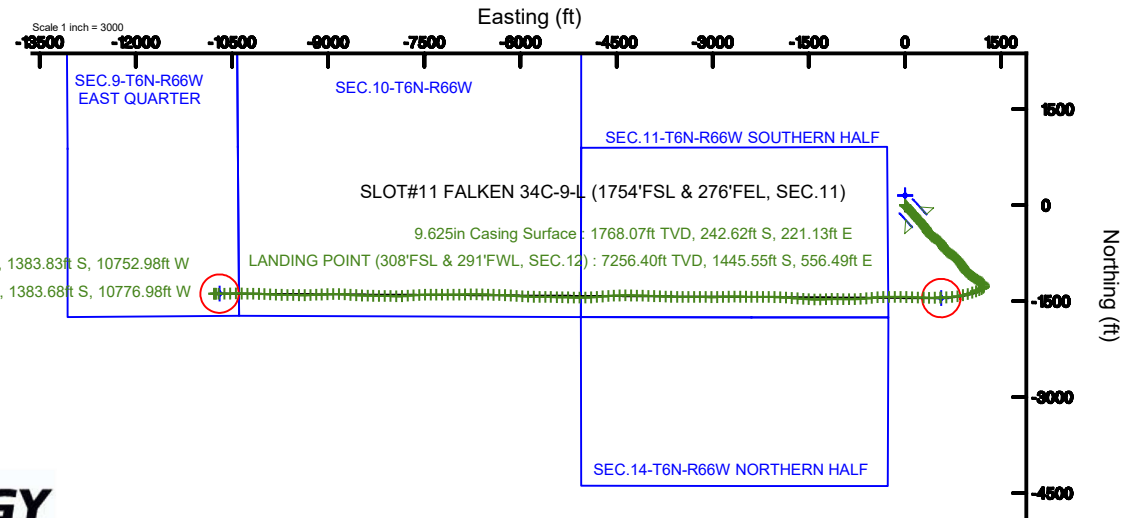


SRC ENERGY

Location: COLORADO Slot: SLOT#11 FALKEN 34C-9-L (1754'FSL & 276'FEL, SEC.11)
Field: WELD COUNTY (NAD83,TRUE NORTH) Well: FALKEN 34C-9-L
Facility: SEC.11-T06N-R66W Wellbore: FALKEN 34C-9-L PWB

Plot reference wellpath is FALKEN 34C-9-L PWB (REV-8.0)	Grid System: NAD83 / Lambert Colorado SP, Northern Zone (501), US feet
True vertical depths are referenced to PRECISION DRILLING 562 (25') (RKB)	* = Wellpath was transformed from a different geodetic datum
Measured depths are referenced to PRECISION DRILLING 562 (25') (RKB)	North Reference: True north
PRECISION DRILLING 562 (25') (RKB) to Mean Sea Level: 4835 feet	Scale: True distance
Mean Sea Level to Mud line (At Slot: SLOT#11 FALKEN 34C-9-L (1754'FSL & 276'FEL, SEC.11)): 0 feet	Depths are in feet
Coordinates are in feet referenced to Slot	Created by: doddanna on 2018-02-07
	Database: WellArchitectDB





Actual Wellpath Report

FALKEN 34C-9-L AWP

Page 1 of 11



REFERENCE WELLPATH IDENTIFICATION			
Operator	SRC ENERGY	Slot	SLOT#11 FALKEN 34C-9-L (1754'FSL & 276'FEL, SEC.11)
Area	COLORADO	Well	FALKEN 34C-9-L
Field	WELD COUNTY (NAD83,TRUE NORTH)	Wellbore	FALKEN 34C-9-L AWB
Facility	SEC.11-T06N-R66W		

REPORT SETUP INFORMATION			
Projection System	NAD83 / Lambert Colorado SP, Northern Zone (501), US feet	Software System	WellArchitect® 5.0
North Reference	True	User	Doddanna
Scale	0.999966	Report Generated	2/7/2018 at 4:44:30 PM
Convergence at slot	0.49° East	Database/Source file	WellArchitectDB/FALKEN_34C-9-L_AWP_.xml

WELLPATH LOCATION						
	Local coordinates		Grid coordinates		Geographic coordinates	
	North[ft]	East[ft]	Easting[US ft]	Northing[US ft]	Latitude	Longitude
Slot Location	-150.10	-1.39	3212478.11	1426046.15	40°30'01.386"N	104°44'09.420"W
Facility Reference Pt			3212478.20	1426196.25	40°30'02.869"N	104°44'09.402"W
Field Reference Pt			3171284.48	1426358.81	40°30'07.643"N	104°53'02.634"W

WELLPATH DATUM			
Calculation method	Minimum curvature	PRECISION DRILLING 562 (25') (RKB) to Facility Vertical Datum	4835.00ft
Horizontal Reference Pt	Slot	PRECISION DRILLING 562 (25') (RKB) to Mean Sea Level	4835.00ft
Vertical Reference Pt	PRECISION DRILLING 562 (25') (RKB)	PRECISION DRILLING 562 (25') (RKB) to Mud Line at Slot (SLOT#11 FALKEN 34C-9-L (1754'FSL & 276'FEL, SEC.11))	4835.00ft
MD Reference Pt	PRECISION DRILLING 562 (25') (RKB)	Section Origin	N 0.00, E 0.00 ft
Field Vertical Reference	Mean Sea Level	Section Azimuth	262.63°



Actual Wellpath Report

FALKEN 34C-9-L AWP

Page 2 of 11



REFERENCE WELLPATH IDENTIFICATION

Operator	SRC ENERGY	Slot	SLOT#11 FALKEN 34C-9-L (1754'FSL & 276'FEL, SEC.11)
Area	COLORADO	Well	FALKEN 34C-9-L
Field	WELD COUNTY (NAD83,TRUE NORTH)	Wellbore	FALKEN 34C-9-L AWP
Facility	SEC.11-T06N-R66W		

WELLPATH DATA (219 stations) † = interpolated/extrapolated station

MD [ft]	Inclination [°]	Azimuth [°]	TVD [ft]	Vert Sect [ft]	North [ft]	East [ft]	DLS [°/100ft]	Comments
0.00†	0.000	343.010	0.00	0.00	0.00	0.00	0.00	
25.00	0.000	343.010	25.00	0.00	0.00	0.00	0.00	
153.00	0.240	343.010	153.00	0.04	0.26	-0.08	0.19	
247.00	0.710	166.120	247.00	0.01	-0.12	0.00	1.01	
341.00	0.950	265.130	340.99	0.72	-0.75	-0.63	1.35	
436.00	1.360	138.660	435.98	0.88	-1.67	-0.67	2.18	
526.00	4.680	129.150	525.84	-2.24	-4.79	2.88	3.72	
614.00	7.140	132.070	613.37	-8.27	-10.72	9.73	2.82	
704.00	9.140	132.770	702.46	-16.49	-19.32	19.13	2.22	
793.00	11.660	134.180	789.99	-26.61	-30.39	30.77	2.85	
883.00	14.580	137.210	877.63	-38.84	-45.05	44.99	3.33	
972.00	17.060	138.080	963.25	-52.74	-62.98	61.32	2.80	
1061.00	17.740	139.020	1048.18	-67.65	-82.93	78.94	0.83	
1151.00	16.800	138.590	1134.12	-82.52	-103.04	96.53	1.05	
1240.00	16.750	138.180	1219.34	-96.97	-122.24	113.59	0.14	
1330.00	16.980	138.070	1305.47	-111.76	-141.69	131.02	0.26	
1419.00	16.220	138.810	1390.76	-126.05	-160.71	147.89	0.89	
1509.00	16.260	138.530	1477.16	-140.11	-179.61	164.51	0.10	
1598.00	16.030	139.740	1562.65	-153.77	-198.32	180.70	0.46	
1688.00	16.060	136.720	1649.15	-167.82	-216.87	197.27	0.93	
1773.00	16.700	137.200	1730.70	-181.80	-234.39	213.63	0.77	
1879.00	16.150	139.770	1832.37	-198.63	-256.82	233.50	0.86	
1969.00	16.750	140.320	1918.69	-212.35	-276.36	249.86	0.69	
2058.00	16.750	136.740	2003.92	-226.72	-295.57	266.84	1.16	
2148.00	16.700	136.380	2090.11	-241.97	-314.37	284.65	0.13	
2237.00	16.390	141.620	2175.43	-256.00	-333.47	301.27	1.71	
2327.00	16.760	143.690	2261.69	-268.83	-353.89	316.84	0.77	
2416.00	16.480	149.280	2346.98	-280.04	-375.08	330.88	1.82	
2506.00	16.680	150.120	2433.24	-290.04	-397.25	343.84	0.35	
2595.00	16.500	146.810	2518.53	-300.44	-418.91	357.12	1.08	



Actual Wellpath Report

FALKEN 34C-9-L AWP

Page 3 of 11



REFERENCE WELLPATH IDENTIFICATION			
Operator	SRC ENERGY	Slot	SLOT#11 FALKEN 34C-9-L (1754'FSL & 276'FEL, SEC.11)
Area	COLORADO	Well	FALKEN 34C-9-L
Field	WELD COUNTY (NAD83,TRUE NORTH)	Wellbore	FALKEN 34C-9-L AWP
Facility	SEC.11-T06N-R66W		

WELLPATH DATA (219 stations)								
MD [ft]	Inclination [°]	Azimuth [°]	TVD [ft]	Vert Sect [ft]	North [ft]	East [ft]	DLS [°/100ft]	Comments
2685.00	16.870	142.650	2604.75	-312.53	-439.98	372.04	1.39	
2774.00	16.710	134.560	2689.96	-326.88	-459.23	389.00	2.63	
2863.00	16.740	134.100	2775.20	-342.75	-477.13	407.32	0.15	
2953.00	16.900	129.080	2861.35	-359.84	-494.39	426.78	1.62	
3042.00	16.850	118.730	2946.54	-379.18	-508.75	448.14	3.37	
3132.00	16.340	116.950	3032.79	-400.18	-520.76	470.86	0.80	
3221.00	16.760	123.750	3118.11	-420.18	-533.57	492.69	2.23	
3311.00	16.750	129.170	3204.30	-438.88	-548.97	513.54	1.74	
3400.00	15.650	133.210	3289.76	-455.33	-565.29	532.23	1.77	
3490.00	15.090	139.820	3376.55	-469.38	-582.55	548.64	2.04	
3579.00	16.670	143.950	3462.16	-481.79	-601.72	563.63	2.18	
3669.00	17.160	148.150	3548.27	-493.49	-623.44	578.23	1.46	
3758.00	17.350	147.810	3633.26	-504.50	-645.82	592.23	0.24	
3848.00	17.100	150.220	3719.22	-515.18	-668.66	605.95	0.84	
3937.00	17.380	142.260	3804.24	-526.89	-690.54	620.59	2.67	
4027.00	17.230	132.630	3890.18	-542.25	-710.20	638.63	3.18	
4116.00	16.650	127.710	3975.32	-559.73	-726.92	658.41	1.74	
4206.00	16.650	123.710	4061.55	-578.56	-741.97	679.34	1.27	
4295.00	16.510	120.040	4146.86	-598.21	-755.37	700.89	1.19	
4385.00	16.220	123.080	4233.21	-617.94	-768.64	722.50	1.00	
4475.00	16.580	125.210	4319.55	-636.96	-782.90	743.52	0.78	
4564.00	16.270	129.870	4404.92	-654.77	-798.22	763.46	1.52	
4654.00	16.470	133.380	4491.27	-671.40	-815.06	782.41	1.12	
4743.00	16.480	135.670	4576.62	-686.98	-832.76	800.41	0.73	
4833.00	16.360	137.020	4662.95	-702.03	-851.16	817.97	0.44	
4922.00	15.820	141.670	4748.47	-715.57	-869.85	834.04	1.57	
5012.00	16.400	143.660	4834.93	-728.04	-889.71	849.17	0.89	
5102.00	16.060	145.030	4921.35	-739.96	-910.14	863.84	0.57	
5191.00	16.460	145.740	5006.79	-751.37	-930.65	877.99	0.50	
5281.00	16.630	145.480	5093.06	-763.01	-951.80	892.47	0.21	



Actual Wellpath Report

FALKEN 34C-9-L AWP

Page 4 of 11



REFERENCE WELLPATH IDENTIFICATION

Operator	SRC ENERGY	Slot	SLOT#11 FALKEN 34C-9-L (1754'FSL & 276'FEL, SEC.11)
Area	COLORADO	Well	FALKEN 34C-9-L
Field	WELD COUNTY (NAD83,TRUE NORTH)	Wellbore	FALKEN 34C-9-L AWP
Facility	SEC.11-T06N-R66W		

WELLPATH DATA (219 stations)

MD [ft]	Inclination [°]	Azimuth [°]	TVD [ft]	Vert Sect [ft]	North [ft]	East [ft]	DLS [°/100ft]	Comments
5370.00	15.700	142.430	5178.54	-774.88	-971.84	907.03	1.41	
5460.00	13.940	146.000	5265.55	-785.86	-990.48	920.52	2.20	
5549.00	13.740	143.890	5351.96	-795.75	-1007.91	932.74	0.61	
5639.00	14.470	141.150	5439.25	-806.76	-1025.30	946.09	1.10	
5728.00	14.940	138.810	5525.34	-818.96	-1042.59	960.62	0.85	
5818.00	15.600	135.490	5612.16	-832.72	-1059.95	976.75	1.22	
5907.00	17.140	128.820	5697.56	-849.03	-1076.71	995.36	2.73	
5997.00	17.230	123.860	5783.54	-868.23	-1092.45	1016.76	1.63	
6086.00	16.920	123.460	5868.62	-887.95	-1106.94	1038.51	0.37	
6176.00	16.090	123.780	5954.91	-907.25	-1121.09	1059.80	0.93	
6265.00	16.150	123.970	6040.41	-925.83	-1134.87	1080.32	0.09	
6354.00	16.610	124.120	6125.80	-944.65	-1148.92	1101.12	0.52	
6444.00	17.200	123.400	6211.91	-964.36	-1163.46	1122.87	0.70	
6533.00	18.170	122.690	6296.70	-984.95	-1178.20	1145.54	1.12	
6623.00	18.240	121.050	6382.20	-1006.73	-1193.04	1169.42	0.57	
6712.00	17.750	123.720	6466.85	-1027.86	-1207.76	1192.63	1.08	
6802.00	16.680	135.730	6552.84	-1045.97	-1224.63	1213.07	4.12	
6891.00	16.180	156.240	6638.28	-1057.14	-1245.14	1226.99	6.51	
6981.00	16.240	186.130	6724.85	-1057.74	-1269.17	1230.71	9.17	
7026.00	16.950	204.340	6768.01	-1052.82	-1281.41	1227.33	11.62	
7070.00	18.320	218.940	6809.96	-1044.45	-1292.64	1220.33	10.49	
7160.00	24.110	242.320	6893.97	-1016.91	-1312.23	1195.10	11.28	
7249.00	32.450	249.960	6972.30	-976.48	-1328.89	1156.49	10.20	
7339.00	40.280	249.700	7044.72	-924.49	-1347.29	1106.44	8.70	
7428.00	48.560	251.330	7108.23	-863.63	-1367.99	1047.75	9.39	
7518.00	56.750	254.300	7162.79	-793.18	-1389.01	979.44	9.47	
7607.00	65.330	257.420	7205.85	-715.93	-1407.93	903.99	10.11	
7697.00	73.680	259.770	7237.34	-631.91	-1424.53	821.42	9.59	
7786.00	84.140	264.200	7254.44	-544.72	-1436.63	735.07	12.72	
7876.00	91.140	267.860	7258.15	-455.03	-1442.84	645.43	8.77	



SRC ENERGY

Actual Wellpath Report

FALKEN 34C-9-L AWP

Page 5 of 11

**BAKER
HUGHES****REFERENCE WELLPATH IDENTIFICATION**

Operator	SRC ENERGY	Slot	SLOT#11 FALKEN 34C-9-L (1754'FSL & 276'FEL, SEC.11)
Area	COLORADO	Well	FALKEN 34C-9-L
Field	WELD COUNTY (NAD83,TRUE NORTH)	Wellbore	FALKEN 34C-9-L AWP
Facility	SEC.11-T06N-R66W		

WELLPATH DATA (219 stations)

MD [ft]	Inclination [°]	Azimuth [°]	TVD [ft]	Vert Sect [ft]	North [ft]	East [ft]	DLS [°/100ft]	Comments
7965.00	91.110	268.660	7256.40	-366.48	-1445.55	556.49	0.90	LANDING POINT (308'FSL & 291'FWL, SEC.12)
8055.00	91.110	268.880	7254.66	-277.01	-1447.48	466.53	0.24	
8145.00	91.170	270.230	7252.87	-187.69	-1448.18	376.55	1.50	
8234.00	91.080	271.840	7251.12	-99.66	-1446.57	287.59	1.81	
8324.00	91.080	272.020	7249.42	-10.86	-1443.54	197.65	0.20	
8413.00	90.980	272.510	7247.82	76.87	-1440.02	108.74	0.56	
8503.00	90.920	271.320	7246.33	165.68	-1437.02	18.80	1.32	
8592.00	90.310	269.970	7245.38	253.80	-1436.01	-70.18	1.66	
8682.00	89.850	270.340	7245.25	343.02	-1435.77	-160.18	0.66	
8771.00	87.970	270.210	7246.94	431.21	-1435.34	-249.16	2.12	
8860.00	88.920	268.080	7249.36	519.60	-1436.67	-338.11	2.62	
8950.00	90.030	265.900	7250.18	609.33	-1441.40	-427.98	2.72	
9040.00	90.580	264.370	7249.70	699.24	-1449.03	-517.65	1.81	
9129.00	90.310	264.480	7249.01	788.19	-1457.67	-606.23	0.33	
9219.00	89.660	265.820	7249.04	878.10	-1465.28	-695.90	1.65	
9308.00	89.690	268.920	7249.54	966.79	-1469.37	-784.80	3.48	
9398.00	88.890	270.470	7250.66	1056.09	-1469.85	-874.78	1.94	
9487.00	89.290	271.100	7252.07	1144.18	-1468.63	-963.76	0.84	
9577.00	89.050	271.220	7253.37	1233.18	-1466.80	-1053.74	0.30	
9666.00	88.980	267.980	7254.90	1321.49	-1467.43	-1142.71	3.64	
9756.00	88.980	266.780	7256.51	1411.17	-1471.54	-1232.60	1.33	
9845.00	89.050	268.910	7258.04	1499.78	-1474.89	-1321.52	2.39	
9934.00	89.290	271.390	7259.33	1588.00	-1474.65	-1410.50	2.80	
10024.00	89.260	273.720	7260.47	1676.64	-1470.64	-1500.40	2.59	
10113.00	89.170	274.690	7261.68	1763.82	-1464.12	-1589.15	1.09	
10203.00	89.230	273.800	7262.94	1851.97	-1457.45	-1678.89	0.99	
10292.00	89.260	273.550	7264.11	1939.31	-1451.75	-1767.70	0.28	
10382.00	89.260	273.800	7265.28	2027.64	-1445.98	-1857.51	0.28	
10471.00	89.080	272.890	7266.57	2115.08	-1440.79	-1946.35	1.04	
10561.00	89.080	271.550	7268.01	2203.81	-1437.30	-2036.27	1.49	



Actual Wellpath Report

FALKEN 34C-9-L AWP

Page 6 of 11



REFERENCE WELLPATH IDENTIFICATION

Operator	SRC ENERGY	Slot	SLOT#11 FALKEN 34C-9-L (1754'FSL & 276'FEL, SEC.11)
Area	COLORADO	Well	FALKEN 34C-9-L
Field	WELD COUNTY (NAD83,TRUE NORTH)	Wellbore	FALKEN 34C-9-L AWP
Facility	SEC.11-T06N-R66W		

WELLPATH DATA (219 stations)

MD [ft]	Inclination [°]	Azimuth [°]	TVD [ft]	Vert Sect [ft]	North [ft]	East [ft]	DLS [°/100ft]	Comments
10650.00	89.050	270.350	7269.46	2291.86	-1435.83	-2125.24	1.35	
10740.00	88.920	270.230	7271.06	2381.04	-1435.37	-2215.22	0.20	
10830.00	88.950	270.690	7272.73	2470.18	-1434.65	-2305.21	0.51	
10919.00	87.260	270.780	7275.67	2558.24	-1433.51	-2394.15	1.90	
11008.00	89.140	270.330	7278.47	2646.35	-1432.65	-2483.09	2.17	
11098.00	89.690	270.920	7279.39	2735.47	-1431.67	-2573.08	0.90	
11187.00	89.750	269.980	7279.82	2823.64	-1430.97	-2662.08	1.06	
11277.00	89.780	268.990	7280.19	2912.99	-1431.78	-2752.07	1.10	
11366.00	89.910	268.180	7280.43	3001.51	-1433.97	-2841.04	0.92	
11456.00	90.090	268.200	7280.43	3091.09	-1436.82	-2931.00	0.20	
11545.00	90.120	270.450	7280.27	3179.47	-1437.87	-3019.99	2.53	
11635.00	89.750	271.160	7280.37	3268.56	-1436.60	-3109.98	0.89	
11724.00	89.750	271.030	7280.76	3356.59	-1434.90	-3198.96	0.15	
11814.00	89.750	270.230	7281.15	3445.71	-1433.91	-3288.95	0.89	
11903.00	89.750	269.490	7281.54	3534.00	-1434.13	-3377.95	0.83	
11993.00	90.980	269.930	7280.97	3623.31	-1434.58	-3467.95	1.45	
12082.00	90.950	270.730	7279.47	3711.50	-1434.07	-3556.93	0.90	
12172.00	89.970	271.600	7278.75	3800.50	-1432.24	-3646.91	1.46	
12261.00	89.910	271.750	7278.84	3888.39	-1429.64	-3735.87	0.18	
12351.00	89.970	272.700	7278.93	3977.13	-1426.15	-3825.80	1.06	
12440.00	89.720	272.530	7279.17	4064.78	-1422.09	-3914.71	0.34	
12530.00	89.720	272.040	7279.61	4153.50	-1418.50	-4004.64	0.54	
12619.00	89.750	271.800	7280.03	4241.34	-1415.51	-4093.59	0.27	
12709.00	89.690	271.240	7280.47	4330.25	-1413.13	-4183.55	0.63	
12798.00	89.780	270.430	7280.88	4418.34	-1411.83	-4272.54	0.92	
12888.00	89.750	269.890	7281.25	4507.56	-1411.58	-4362.54	0.60	
12977.00	89.600	268.910	7281.75	4595.94	-1412.51	-4451.53	1.11	
13067.00	89.630	267.220	7282.36	4685.53	-1415.55	-4541.48	1.88	
13156.00	89.570	265.930	7282.98	4774.32	-1420.87	-4630.31	1.45	
13245.00	89.780	265.090	7283.48	4863.20	-1427.83	-4719.04	0.97	



Actual Wellpath Report

FALKEN 34C-9-L AWP

Page 7 of 11



REFERENCE WELLPATH IDENTIFICATION

Operator	SRC ENERGY	Slot	SLOT#11 FALKEN 34C-9-L (1754'FSL & 276'FEL, SEC.11)
Area	COLORADO	Well	FALKEN 34C-9-L
Field	WELD COUNTY (NAD83,TRUE NORTH)	Wellbore	FALKEN 34C-9-L AWP
Facility	SEC.11-T06N-R66W		

WELLPATH DATA (219 stations)

MD [ft]	Inclination [°]	Azimuth [°]	TVD [ft]	Vert Sect [ft]	North [ft]	East [ft]	DLS [°/100ft]	Comments
13335.00	89.750	265.620	7283.85	4953.10	-1435.12	-4808.74	0.59	
13425.00	89.910	265.890	7284.12	5042.96	-1441.78	-4898.49	0.35	
13514.00	89.820	268.920	7284.33	5131.64	-1445.81	-4987.39	3.41	
13603.00	89.880	271.620	7284.56	5219.85	-1445.39	-5076.38	3.03	
13693.00	89.750	270.840	7284.85	5308.83	-1443.46	-5166.36	0.88	
13782.00	89.690	270.860	7285.29	5396.92	-1442.14	-5255.35	0.07	
13872.00	89.780	271.380	7285.70	5485.93	-1440.38	-5345.33	0.59	
13961.00	89.690	271.570	7286.11	5573.87	-1438.09	-5434.30	0.24	
14051.00	89.780	270.750	7286.53	5662.87	-1436.27	-5524.28	0.92	
14140.00	89.880	270.600	7286.79	5751.00	-1435.22	-5613.27	0.20	
14230.00	89.850	270.670	7287.01	5840.12	-1434.22	-5703.27	0.08	
14319.00	89.820	271.630	7287.26	5928.14	-1432.44	-5792.25	1.08	
14409.00	89.880	272.560	7287.50	6016.91	-1429.15	-5882.19	1.04	
14499.00	89.780	273.130	7287.77	6105.48	-1424.68	-5972.07	0.64	
14588.00	90.220	273.910	7287.77	6192.88	-1419.22	-6060.91	1.01	
14677.00	89.630	274.120	7287.88	6280.13	-1412.98	-6149.69	0.70	
14767.00	89.570	273.030	7288.51	6368.49	-1407.37	-6239.51	1.21	
14856.00	89.570	271.340	7289.18	6456.25	-1403.98	-6328.44	1.90	
14946.00	94.130	270.040	7286.27	6545.29	-1402.90	-6418.36	5.27	
15035.00	92.120	272.760	7281.42	6633.10	-1400.72	-6507.19	3.80	
15124.00	90.280	272.390	7279.56	6720.74	-1396.73	-6596.07	2.11	
15214.00	87.880	270.430	7281.00	6809.67	-1394.51	-6686.02	3.44	
15303.00	87.850	269.210	7284.32	6897.90	-1394.79	-6774.96	1.37	
15393.00	87.940	268.080	7287.62	6987.35	-1396.92	-6864.87	1.26	
15482.00	89.110	268.340	7289.91	7075.89	-1399.70	-6953.80	1.35	
15572.00	89.970	269.590	7290.64	7165.34	-1401.32	-7043.78	1.69	
15661.00	91.200	270.650	7289.73	7253.57	-1401.14	-7132.77	1.82	
15751.00	90.890	270.390	7288.09	7342.70	-1400.32	-7222.75	0.45	
15840.00	90.920	269.830	7286.68	7430.94	-1400.15	-7311.74	0.63	
15929.00	91.020	269.720	7285.18	7519.23	-1400.50	-7400.73	0.17	



Actual Wellpath Report

FALKEN 34C-9-L AWP

Page 8 of 11



REFERENCE WELLPATH IDENTIFICATION			
Operator	SRC ENERGY	Slot	SLOT#11 FALKEN 34C-9-L (1754'FSL & 276'FEL, SEC.11)
Area	COLORADO	Well	FALKEN 34C-9-L
Field	WELD COUNTY (NAD83,TRUE NORTH)	Wellbore	FALKEN 34C-9-L AWP
Facility	SEC.11-T06N-R66W		

WELLPATH DATA (219 stations)								
MD [ft]	Inclination [°]	Azimuth [°]	TVD [ft]	Vert Sect [ft]	North [ft]	East [ft]	DLS [°/100ft]	Comments
16019.00	91.050	269.510	7283.55	7608.55	-1401.10	-7490.71	0.24	
16109.00	90.830	267.960	7282.07	7698.02	-1403.09	-7580.67	1.74	
16198.00	90.920	264.610	7280.71	7786.82	-1408.85	-7669.46	3.76	
16288.00	89.020	265.600	7280.76	7876.73	-1416.53	-7759.13	2.38	
16377.00	87.940	266.830	7283.12	7965.52	-1422.41	-7847.90	1.84	
16467.00	90.280	270.630	7284.52	8054.98	-1424.40	-7937.84	4.96	
16556.00	90.250	272.950	7284.11	8142.84	-1421.62	-8026.79	2.61	
16646.00	90.180	270.590	7283.77	8231.69	-1418.84	-8116.74	2.62	
16735.00	90.180	270.190	7283.49	8319.87	-1418.23	-8205.74	0.45	
16825.00	90.220	271.220	7283.18	8408.98	-1417.13	-8295.73	1.15	
16914.00	90.310	271.990	7282.76	8496.89	-1414.63	-8384.70	0.87	
17004.00	90.250	271.750	7282.32	8585.72	-1411.70	-8474.65	0.27	
17093.00	90.310	272.930	7281.89	8673.44	-1408.06	-8563.57	1.33	
17182.00	90.060	273.860	7281.60	8760.87	-1402.79	-8652.41	1.08	
17272.00	90.180	274.530	7281.41	8849.05	-1396.21	-8742.17	0.76	
17362.00	90.280	273.090	7281.05	8937.33	-1390.23	-8831.97	1.60	
17451.00	90.090	268.620	7280.77	9025.40	-1388.90	-8920.94	5.03	
17540.00	90.060	266.460	7280.65	9114.06	-1392.72	-9009.85	2.43	
17630.00	90.060	267.430	7280.55	9203.81	-1397.52	-9099.72	1.08	
17719.00	89.940	267.420	7280.55	9292.50	-1401.52	-9188.63	0.14	
17809.00	90.000	267.390	7280.60	9382.18	-1405.59	-9278.54	0.07	
17898.00	90.000	269.520	7280.60	9470.72	-1407.99	-9367.50	2.39	
17988.00	90.120	271.450	7280.51	9559.87	-1407.23	-9457.49	2.15	
18077.00	90.120	270.660	7280.32	9647.91	-1405.59	-9546.48	0.89	
18166.00	90.250	270.970	7280.03	9736.00	-1404.32	-9635.47	0.38	
18256.00	90.280	271.420	7279.62	9825.00	-1402.45	-9725.45	0.50	
18345.00	90.430	272.350	7279.07	9912.84	-1399.52	-9814.40	1.06	
18434.00	88.340	273.140	7280.02	10000.44	-1395.26	-9903.28	2.51	
18524.00	90.150	272.480	7281.21	10089.01	-1390.85	-9993.16	2.14	
18613.00	90.060	271.640	7281.04	10176.81	-1387.65	-10082.10	0.95	



Actual Wellpath Report

FALKEN 34C-9-L AWP

Page 9 of 11



REFERENCE WELLPATH IDENTIFICATION			
Operator	SRC ENERGY	Slot	SLOT#11 FALKEN 34C-9-L (1754'FSL & 276'FEL, SEC.11)
Area	COLORADO	Well	FALKEN 34C-9-L
Field	WELD COUNTY (NAD83,TRUE NORTH)	Wellbore	FALKEN 34C-9-L AWB
Facility	SEC.11-T06N-R66W		

WELLPATH DATA (219 stations)								
MD [ft]	Inclination [°]	Azimuth [°]	TVD [ft]	Vert Sect [ft]	North [ft]	East [ft]	DLS [°/100ft]	Comments
18703.00	90.090	270.140	7280.93	10265.88	-1386.25	-10172.09	1.67	
18792.00	90.120	271.320	7280.76	10353.99	-1385.12	-10261.08	1.33	
18882.00	90.090	272.270	7280.60	10442.84	-1382.30	-10351.04	1.06	
18971.00	90.060	269.520	7280.48	10530.90	-1380.91	-10440.02	3.09	
19061.00	90.030	268.410	7280.41	10620.35	-1382.53	-10530.00	1.23	
19150.00	90.250	269.380	7280.19	10708.82	-1384.25	-10618.98	1.12	
19240.00	90.120	270.660	7279.90	10798.07	-1384.22	-10708.98	1.43	
19284.00	90.060	270.350	7279.83	10841.65	-1383.83	-10752.98	0.72	LAST BHGE MWD SURVEY (350'FSL & 359'FEL, SEC.09)
19308.00	90.060	270.350	7279.81	10865.44	-1383.68	-10776.98	0.00	PROJECTION TO BIT (350'FSL & 383'FEL, SEC.09)

HOLE & CASING SECTIONS - Ref Wellbore: FALKEN 34C-9-L AWB Ref Wellpath: FALKEN 34C-9-L AWP									
String/Diameter	Start MD [ft]	End MD [ft]	Interval [ft]	Start TVD [ft]	End TVD [ft]	Start N/S [ft]	Start E/W [ft]	End N/S [ft]	End E/W [ft]
13.5in Open Hole	25.00	1812.00	1787.00	25.00	1768.07	0.00	0.00	-242.62	221.13
9.625in Casing Surface	25.00	1812.00	1787.00	25.00	1768.07	0.00	0.00	-242.62	221.13
8.5in Open Hole	1812.00	19308.00	17496.00	1768.07	7279.81	-242.62	221.13	-1383.68	-10776.98



Actual Wellpath Report

FALKEN 34C-9-L AWP

Page 10 of 11



REFERENCE WELLPATH IDENTIFICATION

Operator	SRC ENERGY	Slot	SLOT#11 FALKEN 34C-9-L (1754'FSL & 276'FEL, SEC.11)
Area	COLORADO	Well	FALKEN 34C-9-L
Field	WELD COUNTY (NAD83, TRUE NORTH)	Wellbore	FALKEN 34C-9-L AWB
Facility	SEC.11-T06N-R66W		

TARGETS

Name	TVD [ft]	North [ft]	East [ft]	Grid East [US ft]	Grid North [US ft]	Latitude	Longitude	Shape
SEC.10-T6N-R66W	0.00	150.10	1.39	3212478.20	1426196.25	40°30'02.869"N	104°44'09.402"W	polygon
SEC.11-T6N-R66W SOUTHERN HALF	0.00	150.10	1.39	3212478.20	1426196.25	40°30'02.869"N	104°44'09.402"W	polygon
SEC.14-T6N-R66W NORTHERN HALF	0.00	150.10	1.39	3212478.20	1426196.25	40°30'02.869"N	104°44'09.402"W	polygon
SEC.9-T6N-R66W EAST QUARTER	0.00	150.10	1.39	3212478.20	1426196.25	40°30'02.869"N	104°44'09.402"W	polygon
FALKEN 34C-9-L TOP OF PROD ON PLAT (301'FSL & 300'FWL, SEC.12)	7233.00	-1452.89	565.43	3213056.01	1424598.23	40°29'47.029"N	104°44'02.101"W	circle
FALKEN 34C-9-L BHL ON PLAT (350'FSL & 300'FEL, SEC.09)	7261.00	-1383.18	-10694.40	3201796.40	1424570.92	40°29'47.695"N	104°46'27.847"W	circle

WELLPATH COMPOSITION - Ref Wellbore: FALKEN 34C-9-L AWB Ref Wellpath: FALKEN 34C-9-L AWP

Start MD [ft]	End MD [ft]	Positional Uncertainty Model	Log Name/Comment	Wellbore
25.00	1773.00	Custom BHI NaviTrak (Standard Rotating+Axial Corr) (Rockies 0.03Gt model)	13 1/2" APS EM SURVEYS <153'-1773'>	FALKEN 34C-9-L AWB
1773.00	19284.00	BHI AutoTrak Curve (IFR1, Short)	8 1/2" ATC SURVEYS <1879'-19284'>	FALKEN 34C-9-L AWB
19284.00	19308.00	Blind Drilling (std)	Projection to bit	FALKEN 34C-9-L AWB



SRC ENERGY

Actual Wellpath Report

FALKEN 34C-9-L AWP

Page 11 of 11



**BAKER
HUGHES**

REFERENCE WELLPATH IDENTIFICATION

Operator	SRC ENERGY	Slot	SLOT#11 FALKEN 34C-9-L (1754'FSL & 276'FEL, SEC.11)
Area	COLORADO	Well	FALKEN 34C-9-L
Field	WELD COUNTY (NAD83,TRUE NORTH)	Wellbore	FALKEN 34C-9-L AWB
Facility	SEC.11-T06N-R66W		

WELLPATH COMMENTS

MD [ft]	Inclination [°]	Azimuth [°]	TVD [ft]	Comment
7965.00	91.110	268.660	7256.40	LANDING POINT (308'FSL & 291'FWL, SEC.12)
19284.00	90.060	270.350	7279.83	LAST BHGE MWD SURVEY (350'FSL & 359'FEL, SEC.09)
19308.00	90.060	270.350	7279.81	PROJECTION TO BIT (350'FSL & 383'FEL, SEC.09)