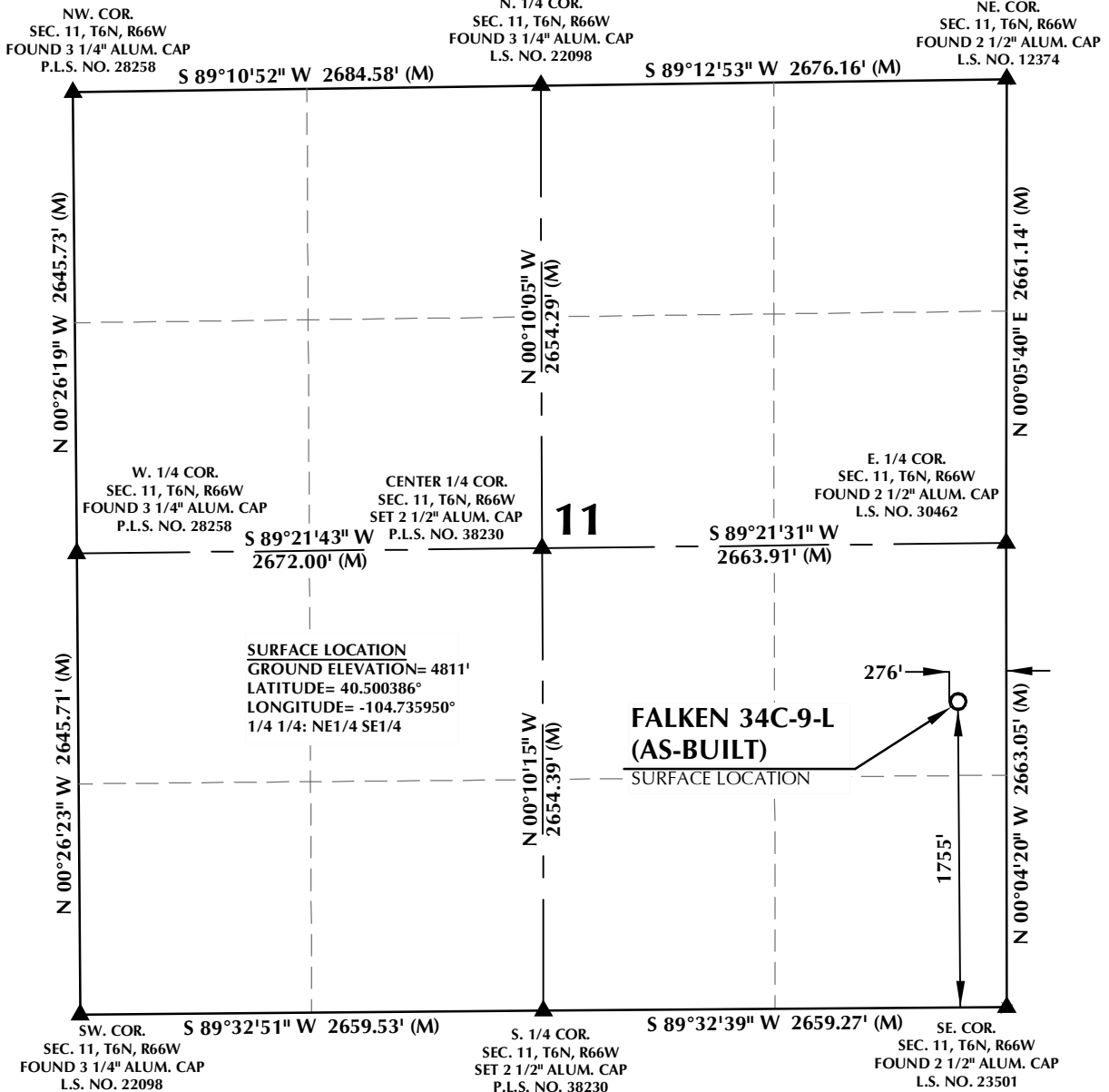


T6N, R66W

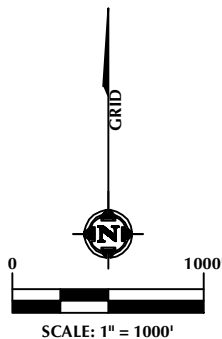


CERTIFICATE OF SURVEYOR:

THIS IS TO CERTIFY THAT THE ABOVE PLAT WAS PREPARED FROM FIELD NOTES OF ACTUAL SURVEY MADE BY ME OR UNDER MY SUPERVISION AND AT THE SAME TIME TRUE AND CORRECT TO THE BEST OF MY KNOWLEDGE AND BELIEF. THIS CERTIFICATE DOES NOT REPRESENT A LAND SURVEY PLAT OR IMPROVEMENT SURVEY PLAT AS DEFINED BY C.R.S. 38-50-102 AND CANNOT BE RELIED UPON TO DETERMINE OWNERSHIP.

John R. Slaugh
 JOHN R. SLAUGH
 PROFESSIONAL LAND SURVEYOR
 COLORADO REGISTRATION NUMBER 38230

NOTICE:
 ACCORDING TO COLORADO STATE LAW YOU MUST COMMENCE ANY LEGAL ACTION BASED UPON ANY DEFECT IN THIS SURVEY WITHIN THREE YEARS AFTER YOU FIRST DISCOVER SUCH DEFECT. IN NO EVENT MAY ANY ACTION BASED UPON ANY DEFECT IN THIS SURVEY BE COMMENCED MORE THAN TEN YEARS FROM THE DATE ON THE CERTIFICATION SHOWN HEREON.



NOTES:

1. ▲ INDICATES SECTION CORNER
2. ● INDICATES CALCULATED CORNER
3. DRAWING LATITUDE AND LONGITUDE COORDINATES ARE NAD 83 (2011)(EPOCH:2010)
4. ELEVATION BASED ON NAVD88 (GEOID12B)
5. BASIS OF BEARING DERIVED FROM COLORADO COORDINATE SYSTEM OF 1983 NORTH ZONE.
6. ALL MEASURED DISTANCES ARE GRID. COMBINED SCALE FACTOR: .99973891 CALCULATED FROM THE SW. CORNER OF SECTION 11, T6N, R66W
7. OPERATOR: ROB WILSON / PDOP = 1.5
8. SEE ADDENDUM TO WELL LOCATION CERTIFICATE FOR EXISTING IMPROVEMENTS WITHIN 500' OF THE WELL PAD.
9. WELL FOOTAGES ARE MEASURED AT RIGHT ANGLES TO THE SECTION LINES.

WELL PAD - FALKEN 9-11 PAD

**FALKEN 34C-9-L (AS-BUILT)
 WELL LOCATION CERTIFICATE
 1755' FSL & 276' FEL NESE (SURFACE)
 LOCATED IN SECTION 11
 T6N, R66W, 6TH P.M.
 WELD COUNTY, COLORADO**



SRC ENERGY
 1675 Broadway, Suite 2600
 Denver, Colorado 80202



CONSULTING, LLC

SHERIDAN OFFICE
 1095 Saberton Avenue
 Sheridan, Wyoming 82801
 Phone 307-674-0609

LOVELAND OFFICE
 1635 Foxtrail Drive, Suite 204
 Loveland, Colorado 80538
 Phone 970-776-4331

| | | | |
|---------------|---------|----------------|---------|
| DRAFTED BY: | GLK | CHECKED BY: | JRS |
| DATE DRAFTED: | 8/18/17 | DATE SURVEYED: | 8/11/17 |
| REVISED: | | FILE NAME: | 17-26 |