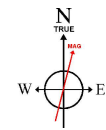
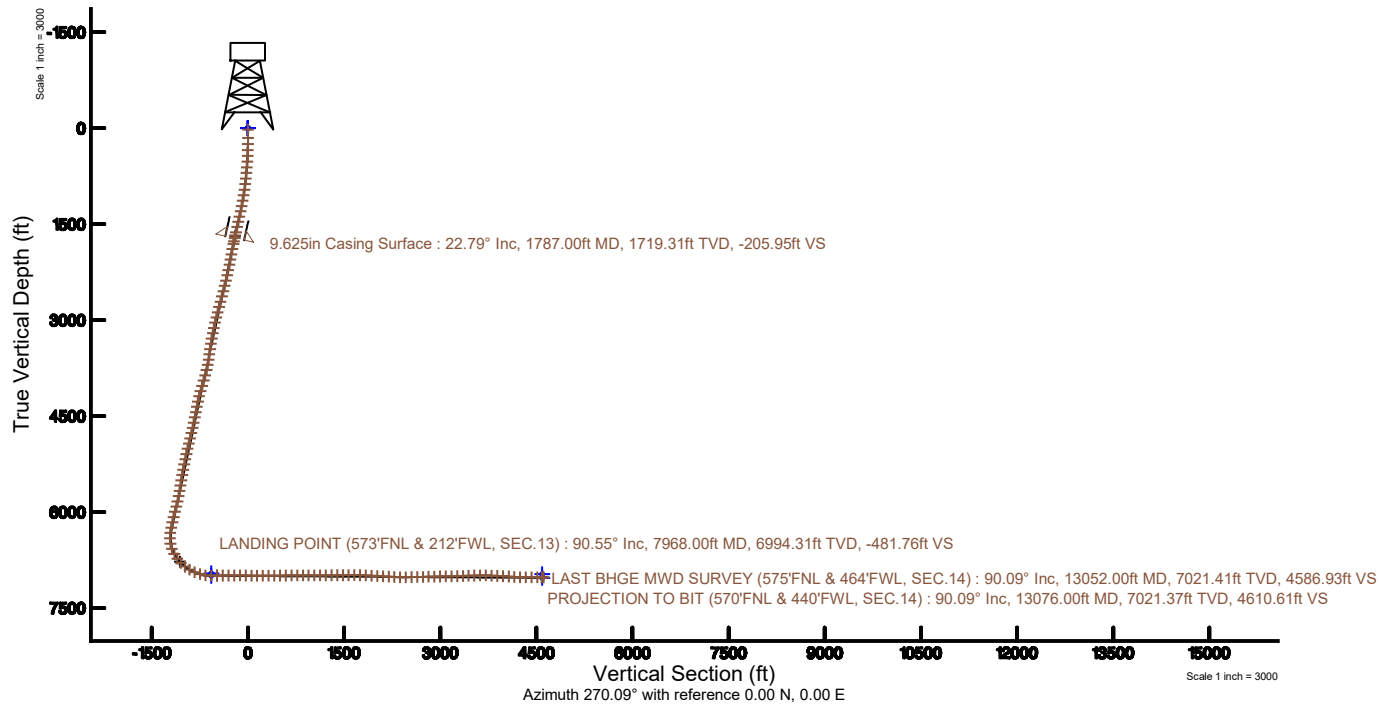
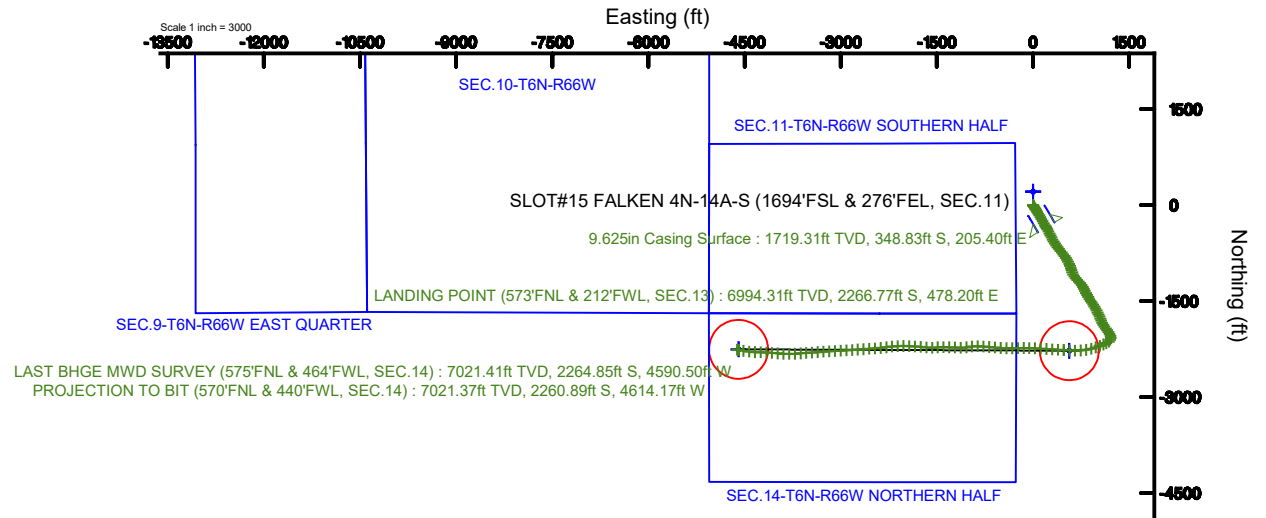


SRC ENERGY

Location: COLORADO Slot: SLOT#15 FALKEN 4N-14A-S (1694'FSL & 276'FEL, SEC.11)
Field: WELD COUNTY (NAD83, TRUE NORTH) Well: FALKEN 4N-14A-S
Facility: SEC.11-T06N-R66W Wellbore: FALKEN 4N-14A-S PWB

Plot reference wellpath is FALKEN 4N-14A-S PWB (REV-B.0)	Grid System: NAD83 / Lambert Colorado SP, Northern Zone (501), US feet
True vertical depths are referenced to PRECISION DRILLING 562 (25') (RKB)	* = Wellpath was transformed from a different geodetic datum
Measured depths are referenced to PRECISION DRILLING 562 (25') (RKB)	North Reference: True north
PRECISION DRILLING 562 (25') (RKB) to Mean Sea Level: 4835 feet	Scale: True distance
Mean Sea Level to Mud line (At Slot: SLOT#15 FALKEN 4N-14A-S (1694'FSL & 276'FEL, SEC.11)): 0 feet	Depths are in feet
Coordinates are in feet referenced to Slot	Created by: doddanna on 2018-02-05
	Database: WellArchitectDB



BGGM (1900.0 to 2019.0) Dip: 66.93° Field: 52459.6 nT
Magnetic North is 8.36 degrees East of True North (at 8/3/2017)
To correct azimuth from Magnetic to True add 8.36 degrees



Actual Wellpath Report

FALKEN 4N-14A-S AWP

Page 1 of 8



REFERENCE WELLPATH IDENTIFICATION			
Operator	SRC ENERGY	Slot	SLOT#15 FALKEN 4N-14A-S (1694'FSL & 276'FEL, SEC.11)
Area	COLORADO	Well	FALKEN 4N-14A-S
Field	WELD COUNTY (NAD83,TRUE NORTH)	Wellbore	FALKEN 4N-14A-S AWB
Facility	SEC.11-T06N-R66W		

REPORT SETUP INFORMATION			
Projection System	NAD83 / Lambert Colorado SP, Northern Zone (501), US feet	Software System	WellArchitect® 5.0
North Reference	True	User	Doddanna
Scale	0.999966	Report Generated	2/5/2018 at 2:46:26 PM
Convergence at slot	0.49° East	Database/Source file	WellArchitectDB/FALKEN_4N-14A-S_AWP.xml

WELLPATH LOCATION						
	Local coordinates		Grid coordinates		Geographic coordinates	
	North[ft]	East[ft]	Easting[US ft]	Northing[US ft]	Latitude	Longitude
Slot Location	-209.85	-1.95	3212478.07	1425986.40	40°30'00.796"N	104°44'09.427"W
Facility Reference Pt			3212478.20	1426196.25	40°30'02.869"N	104°44'09.402"W
Field Reference Pt			3171284.48	1426358.81	40°30'07.643"N	104°53'02.634"W

WELLPATH DATUM			
Calculation method	Minimum curvature	PRECISION DRILLING 562 (25') (RKB) to Facility Vertical Datum	4835.00ft
Horizontal Reference Pt	Slot	PRECISION DRILLING 562 (25') (RKB) to Mean Sea Level	4835.00ft
Vertical Reference Pt	PRECISION DRILLING 562 (25') (RKB)	PRECISION DRILLING 562 (25') (RKB) to Mud Line at Slot (SLOT#15 FALKEN 4N-14A-S (1694'FSL & 276'FEL, SEC.11))	4835.00ft
MD Reference Pt	PRECISION DRILLING 562 (25') (RKB)	Section Origin	N 0.00, E 0.00 ft
Field Vertical Reference	Mean Sea Level	Section Azimuth	270.09°



SRC ENERGY

Actual Wellpath Report

FALKEN 4N-14A-S AWP

Page 2 of 8

**BAKER
HUGHES****REFERENCE WELLPATH IDENTIFICATION**

Operator	SRC ENERGY	Slot	SLOT#15 FALKEN 4N-14A-S (1694'FSL & 276'FEL, SEC.11)
Area	COLORADO	Well	FALKEN 4N-14A-S
Field	WELD COUNTY (NAD83,TRUE NORTH)	Wellbore	FALKEN 4N-14A-S AWB
Facility	SEC.11-T06N-R66W		

WELLPATH DATA (149 stations) † = interpolated/extrapolated station

MD [ft]	Inclination [°]	Azimuth [°]	TVD [ft]	Vert Sect [ft]	North [ft]	East [ft]	DLS [°/100ft]	Comments
0.00†	0.000	208.010	0.00	0.00	0.00	0.00	0.00	
25.00	0.000	208.010	25.00	0.00	0.00	0.00	0.00	
153.00	0.070	208.010	153.00	0.04	-0.07	-0.04	0.05	
247.00	1.310	157.750	246.99	-0.34	-1.11	0.34	1.35	
342.00	2.170	153.790	341.95	-1.55	-3.73	1.55	0.91	
436.00	4.360	143.660	435.79	-4.47	-8.21	4.45	2.40	
526.00	7.560	146.620	525.29	-9.76	-15.91	9.74	3.57	
614.00	9.220	149.110	612.35	-16.59	-26.79	16.54	1.93	
704.00	10.380	149.420	701.03	-24.43	-39.96	24.37	1.29	
793.00	12.060	150.620	788.33	-33.10	-54.97	33.01	1.91	
883.00	12.690	148.180	876.24	-42.95	-71.56	42.84	0.91	
972.00	15.070	148.040	962.63	-54.26	-89.69	54.12	2.67	
1061.00	17.460	149.310	1048.06	-67.23	-110.99	67.06	2.71	
1151.00	18.700	148.240	1133.62	-81.75	-134.87	81.54	1.43	
1240.00	20.560	148.990	1217.44	-97.36	-160.39	97.11	2.11	
1330.00	22.470	149.200	1301.17	-114.35	-188.71	114.06	2.12	
1419.00	24.160	150.350	1382.90	-132.12	-219.15	131.78	1.97	
1509.00	24.410	150.380	1464.93	-150.47	-251.33	150.08	0.28	
1598.00	24.200	151.560	1546.05	-168.30	-283.35	167.86	0.59	
1688.00	23.680	150.020	1628.30	-186.17	-315.23	185.67	0.90	
1746.00	23.040	149.570	1681.55	-197.77	-335.11	197.24	1.15	
1840.00	22.460	148.140	1768.24	-216.61	-366.22	216.03	0.85	
1885.00	23.280	150.500	1809.70	-225.55	-381.26	224.95	2.73	
1973.00	23.320	152.090	1890.52	-242.31	-411.79	241.67	0.72	
2063.00	23.270	153.810	1973.19	-258.55	-443.48	257.85	0.76	
2152.00	23.270	154.970	2054.95	-273.80	-475.19	273.05	0.51	
2241.00	23.430	152.070	2136.66	-289.57	-506.75	288.78	1.30	
2331.00	23.320	151.750	2219.28	-306.43	-538.25	305.59	0.19	
2420.00	23.430	148.810	2300.97	-323.99	-568.91	323.09	1.32	
2510.00	23.430	146.440	2383.56	-343.19	-599.13	342.25	1.05	



SRC ENERGY

Actual Wellpath Report

FALKEN 4N-14A-S AWP

Page 3 of 8

**BAKER
HUGHES****REFERENCE WELLPATH IDENTIFICATION**

Operator	SRC ENERGY	Slot	SLOT#15 FALKEN 4N-14A-S (1694'FSL & 276'FEL, SEC.11)
Area	COLORADO	Well	FALKEN 4N-14A-S
Field	WELD COUNTY (NAD83,TRUE NORTH)	Wellbore	FALKEN 4N-14A-S AWB
Facility	SEC.11-T06N-R66W		

WELLPATH DATA (149 stations)

MD [ft]	Inclination [°]	Azimuth [°]	TVD [ft]	Vert Sect [ft]	North [ft]	East [ft]	DLS [°/100ft]	Comments
2600.00	23.250	145.080	2466.19	-363.30	-628.60	362.31	0.63	
2689.00	23.290	144.400	2547.95	-383.64	-657.31	382.61	0.31	
2779.00	23.420	141.230	2630.58	-405.24	-685.72	404.17	1.40	
2868.00	23.430	140.190	2712.25	-427.69	-713.11	426.57	0.46	
2958.00	23.150	141.920	2794.91	-450.10	-740.78	448.94	0.82	
3048.00	23.380	141.380	2877.59	-472.20	-768.66	471.00	0.35	
3137.00	23.320	142.930	2959.31	-493.89	-796.51	492.64	0.69	
3227.00	23.210	148.210	3042.00	-514.02	-825.80	512.72	2.32	
3316.00	23.280	150.930	3123.78	-531.85	-856.08	530.50	1.21	
3405.00	23.310	151.060	3205.52	-548.96	-886.86	547.57	0.07	
3495.00	22.620	154.920	3288.39	-564.97	-918.12	563.52	1.84	
3584.00	23.240	159.810	3370.37	-578.33	-950.11	576.84	2.25	
3674.00	23.330	161.040	3453.04	-590.30	-983.63	588.76	0.55	
3763.00	23.120	161.660	3534.82	-601.58	-1016.88	599.98	0.36	
3853.00	23.370	159.530	3617.52	-613.44	-1050.38	611.79	0.97	
3942.00	23.380	154.760	3699.22	-627.19	-1082.89	625.49	2.13	
4032.00	23.740	147.880	3781.74	-644.49	-1114.39	642.74	3.08	
4122.00	23.490	138.420	3864.23	-666.08	-1143.16	664.29	4.22	
4211.00	23.340	136.160	3945.90	-690.10	-1169.15	688.27	1.02	
4301.00	23.450	135.170	4028.50	-715.12	-1194.71	713.24	0.45	
4390.00	23.470	137.940	4110.15	-739.52	-1220.43	737.60	1.24	
4479.00	23.270	146.310	4191.87	-761.19	-1248.22	759.23	3.73	
4569.00	23.460	151.200	4274.50	-779.73	-1278.71	777.73	2.16	
4658.00	23.420	151.630	4356.15	-796.72	-1309.80	794.66	0.20	
4748.00	23.280	154.080	4438.78	-813.04	-1341.54	810.94	1.09	
4837.00	23.730	152.000	4520.40	-829.19	-1373.17	827.03	1.06	
4927.00	23.700	151.530	4602.80	-846.36	-1405.06	844.16	0.21	
5016.00	23.660	150.900	4684.31	-863.62	-1436.38	861.37	0.29	
5106.00	23.640	148.200	4766.75	-881.96	-1467.50	879.66	1.20	
5195.00	23.660	146.310	4848.28	-901.32	-1497.52	898.97	0.85	



SRC ENERGY

Actual Wellpath Report

FALKEN 4N-14A-S AWP

Page 4 of 8

**BAKER
HUGHES****REFERENCE WELLPATH IDENTIFICATION**

Operator	SRC ENERGY	Slot	SLOT#15 FALKEN 4N-14A-S (1694'FSL & 276'FEL, SEC.11)
Area	COLORADO	Well	FALKEN 4N-14A-S
Field	WELD COUNTY (NAD83,TRUE NORTH)	Wellbore	FALKEN 4N-14A-S AWB
Facility	SEC.11-T06N-R66W		

WELLPATH DATA (149 stations)

MD [ft]	Inclination [°]	Azimuth [°]	TVD [ft]	Vert Sect [ft]	North [ft]	East [ft]	DLS [°/100ft]	Comments
5285.00	23.540	145.730	4930.75	-921.51	-1527.40	919.11	0.29	
5374.00	23.210	147.380	5012.45	-941.01	-1556.86	938.57	0.82	
5462.00	23.190	148.180	5093.33	-959.54	-1586.19	957.05	0.36	
5552.00	23.130	150.240	5176.08	-977.71	-1616.59	975.17	0.90	
5641.00	22.890	153.950	5258.00	-994.04	-1647.32	991.45	1.65	
5731.00	23.040	154.590	5340.87	-1009.33	-1678.95	1006.69	0.32	
5820.00	23.120	153.640	5422.75	-1024.61	-1710.34	1021.92	0.43	
5910.00	22.740	154.820	5505.63	-1039.91	-1741.92	1037.17	0.66	
5999.00	23.110	156.840	5587.61	-1054.14	-1773.54	1051.36	0.98	
6089.00	23.400	155.700	5670.29	-1068.50	-1806.07	1065.66	0.59	
6178.00	23.530	156.040	5751.93	-1083.03	-1838.41	1080.15	0.21	
6267.00	23.410	150.700	5833.58	-1098.95	-1870.07	1096.02	2.39	
6357.00	23.550	145.290	5916.14	-1117.99	-1900.44	1115.01	2.40	
6446.00	22.960	142.430	5997.91	-1138.74	-1928.82	1135.72	1.43	
6536.00	22.790	145.600	6080.84	-1159.34	-1957.12	1156.27	1.38	
6625.00	23.250	146.950	6162.75	-1178.70	-1986.06	1175.59	0.79	
6715.00	22.550	148.270	6245.65	-1197.51	-2015.63	1194.35	0.96	
6804.00	20.610	159.670	6328.45	-1211.99	-2044.85	1208.78	5.18	
6894.00	19.990	181.960	6412.99	-1217.02	-2075.12	1213.76	8.57	
6984.00	22.750	207.280	6496.97	-1208.54	-2106.04	1205.24	10.61	
7073.00	26.390	230.130	6578.08	-1185.46	-2134.08	1182.11	11.35	
7162.00	32.360	244.210	6655.69	-1148.79	-2157.17	1145.41	10.22	
7252.00	38.210	248.750	6729.14	-1101.15	-2177.76	1097.73	7.12	
7342.00	45.490	248.660	6796.14	-1045.27	-2199.56	1041.82	8.09	
7431.00	54.320	250.330	6853.40	-981.59	-2223.32	978.10	10.02	
7520.00	60.050	255.320	6901.64	-910.19	-2245.29	906.67	7.98	
7610.00	67.240	260.300	6941.58	-831.46	-2262.19	827.90	9.40	
7699.00	74.030	265.780	6971.10	-748.20	-2272.27	744.64	9.59	
7789.00	82.180	270.360	6989.64	-660.29	-2275.18	656.72	10.33	
7878.00	90.620	273.560	6995.23	-571.60	-2272.14	568.04	10.14	



SRC ENERGY

Actual Wellpath Report

FALKEN 4N-14A-S AWP

Page 5 of 8

**BAKER
HUGHES****REFERENCE WELLPATH IDENTIFICATION**

Operator	SRC ENERGY	Slot	SLOT#15 FALKEN 4N-14A-S (1694'FSL & 276'FEL, SEC.11)
Area	COLORADO	Well	FALKEN 4N-14A-S
Field	WELD COUNTY (NAD83,TRUE NORTH)	Wellbore	FALKEN 4N-14A-S AWB
Facility	SEC.11-T06N-R66W		

WELLPATH DATA (149 stations)

MD [ft]	Inclination [°]	Azimuth [°]	TVD [ft]	Vert Sect [ft]	North [ft]	East [ft]	DLS [°/100ft]	Comments
7968.00	90.550	273.270	6994.31	-481.76	-2266.77	478.20	0.33	LANDING POINT (573'FNL & 212'FWL, SEC.13)
8057.00	90.430	274.010	6993.55	-392.93	-2261.12	389.38	0.84	
8147.00	90.000	274.670	6993.21	-303.18	-2254.31	299.64	0.88	
8236.00	90.090	273.470	6993.14	-214.40	-2248.00	210.87	1.35	
8326.00	90.150	272.480	6992.95	-124.52	-2243.33	120.99	1.10	
8415.00	89.290	274.280	6993.39	-35.67	-2238.08	32.15	2.24	
8505.00	89.140	271.620	6994.62	54.20	-2233.45	-57.71	2.96	
8594.00	90.150	268.640	6995.17	143.19	-2233.25	-146.70	3.54	
8684.00	90.310	268.260	6994.81	233.15	-2235.68	-236.67	0.46	
8773.00	90.000	269.510	6994.57	322.13	-2237.41	-325.65	1.45	
8863.00	89.970	270.940	6994.59	412.13	-2237.06	-415.64	1.59	
8952.00	90.430	273.790	6994.28	501.05	-2233.39	-504.56	3.24	
9042.00	90.370	275.380	6993.65	590.77	-2226.19	-594.26	1.77	
9131.00	90.520	275.320	6992.96	679.39	-2217.89	-682.87	0.18	
9221.00	90.460	273.230	6992.19	769.14	-2211.19	-772.62	2.32	
9310.00	90.710	272.420	6991.28	858.03	-2206.80	-861.50	0.95	
9400.00	90.220	262.210	6990.55	947.81	-2211.01	-951.28	11.36	
9489.00	90.220	261.800	6990.21	1035.92	-2223.39	-1039.41	0.46	
9579.00	89.720	271.380	6990.26	1125.65	-2228.74	-1129.15	10.66	
9668.00	90.460	272.100	6990.12	1214.61	-2226.03	-1218.11	1.16	
9757.00	90.620	271.910	6989.28	1303.56	-2222.92	-1307.05	0.28	
9847.00	89.970	272.510	6988.81	1393.49	-2219.45	-1396.98	0.98	
9936.00	90.250	263.040	6988.64	1482.32	-2222.90	-1485.81	10.65	
10025.00	90.460	269.380	6988.09	1571.07	-2228.78	-1574.57	7.13	
10115.00	90.430	276.070	6987.39	1660.92	-2224.50	-1664.41	7.43	
10204.00	87.810	275.120	6988.76	1749.49	-2215.83	-1752.97	3.13	
10294.00	86.700	273.800	6993.07	1839.12	-2208.84	-1842.59	1.91	
10383.00	86.980	272.290	6997.97	1927.86	-2204.12	-1931.33	1.72	
10473.00	87.130	270.330	7002.60	2017.72	-2202.06	-2021.18	2.18	
10562.00	87.140	267.940	7007.05	2106.59	-2203.41	-2110.05	2.68	



Actual Wellpath Report

FALKEN 4N-14A-S AWP

Page 6 of 8



REFERENCE WELLPATH IDENTIFICATION

Operator	SRC ENERGY	Slot	SLOT#15 FALKEN 4N-14A-S (1694'FSL & 276'FEL, SEC.11)
Area	COLORADO	Well	FALKEN 4N-14A-S
Field	WELD COUNTY (NAD83,TRUE NORTH)	Wellbore	FALKEN 4N-14A-S AWB
Facility	SEC.11-T06N-R66W		

WELLPATH DATA (149 stations)

MD [ft]	Inclination [°]	Azimuth [°]	TVD [ft]	Vert Sect [ft]	North [ft]	East [ft]	DLS [°/100ft]	Comments
10652.00	86.800	262.850	7011.81	2196.13	-2210.62	-2199.61	5.66	
10741.00	86.980	262.250	7016.64	2284.23	-2222.14	-2287.73	0.70	
10831.00	89.050	264.610	7019.75	2373.56	-2232.43	-2377.07	3.49	
10920.00	90.950	265.530	7019.75	2462.22	-2240.08	-2465.74	2.37	
11010.00	90.770	265.920	7018.40	2551.94	-2246.79	-2555.48	0.48	
11099.00	90.990	266.600	7017.04	2640.73	-2252.59	-2644.28	0.80	
11189.00	91.450	266.300	7015.12	2730.53	-2258.16	-2734.08	0.61	
11278.00	91.420	266.150	7012.89	2819.30	-2264.02	-2822.86	0.17	
11368.00	91.510	266.760	7010.59	2909.09	-2269.58	-2912.66	0.68	
11457.00	91.230	266.430	7008.46	2997.90	-2274.87	-3001.48	0.49	
11547.00	91.230	266.810	7006.53	3087.71	-2280.17	-3091.30	0.42	
11636.00	91.020	266.390	7004.78	3176.53	-2285.45	-3180.13	0.53	
11726.00	90.990	265.850	7003.21	3266.30	-2291.54	-3269.90	0.60	
11815.00	92.000	265.770	7000.88	3355.02	-2298.04	-3358.64	1.14	
11904.00	92.190	266.710	6997.63	3443.76	-2303.87	-3447.38	1.08	
11994.00	92.000	265.310	6994.34	3533.47	-2310.13	-3537.10	1.57	
12084.00	90.860	265.710	6992.09	3623.15	-2317.17	-3626.80	1.34	
12173.00	89.010	266.590	6992.19	3711.94	-2323.15	-3715.59	2.30	
12263.00	87.040	269.730	6995.30	3801.82	-2326.04	-3805.48	4.12	
12352.00	87.630	272.930	6999.44	3890.69	-2323.97	-3894.34	3.65	
12441.00	87.010	275.550	7003.60	3979.35	-2317.40	-3983.00	3.02	
12531.00	85.840	274.220	7009.21	4068.86	-2309.75	-4072.49	1.97	
12620.00	85.970	272.590	7015.57	4157.48	-2304.48	-4161.10	1.83	
12710.00	88.150	271.450	7020.18	4247.30	-2301.31	-4250.92	2.73	
12799.00	90.180	273.090	7021.48	4336.22	-2297.79	-4339.84	2.93	
12889.00	89.970	276.650	7021.36	4425.89	-2290.15	-4429.50	3.96	
12978.00	89.940	279.920	7021.43	4513.97	-2277.33	-4517.55	3.67	
13052.00	90.090	279.490	7021.41	4586.93	-2264.85	-4590.50	0.62	LAST BHGE MWD SURVEY (575'FNL & 464'FWL, SEC.14)
13076.00	90.090	279.490	7021.37	4610.61	-2260.89	-4614.17	0.00	PROJECTION TO BIT (570'FNL & 440'FWL, SEC.14)

HOLE & CASING SECTIONS

- Ref Wellbore: FALKEN 4N-14A-S AWB Ref Wellpath: FALKEN 4N-14A-S AWP

String/Diameter	Start MD [ft]	End MD [ft]	Interval [ft]	Start TVD [ft]	End TVD [ft]	Start N/S [ft]	Start E/W [ft]	End N/S [ft]	End E/W [ft]
13.5in Open Hole	25.00	1787.00	1762.00	25.00	1719.31	0.00	0.00	-348.83	205.40
9.625in Casing Surface	25.00	1787.00	1762.00	25.00	1719.31	0.00	0.00	-348.83	205.40
8.5in Open Hole	1787.00	13076.00	11289.00	1719.31	7021.37	-348.83	205.40	-2260.89	-4614.17

TARGETS

Name	TVD [ft]	North [ft]	East [ft]	Grid East [US ft]	Grid North [US ft]	Latitude	Longitude	Shape
SEC.10-T6N-R66W	0.00	209.85	1.95	3212478.20	1426196.25	40°30'02.869"N	104°44'09.402"W	polygon
SEC.11-T6N-R66W SOUTHERN HALF	0.00	209.85	1.95	3212478.20	1426196.25	40°30'02.869"N	104°44'09.402"W	polygon

TARGETS								
Name	TVD [ft]	North [ft]	East [ft]	Grid East [US ft]	Grid North [US ft]	Latitude	Longitude	Shape
SEC.14-T6N-R66W NORTHERN HALF	0.00	209.85	1.95	3212478.20	1426196.25	40°30'02.869"N	104°44'09.402"W	polygon
SEC.9-T6N-R66W EAST QUARTER	0.00	209.85	1.95	3212478.20	1426196.25	40°30'02.869"N	104°44'09.402"W	polygon
FALKEN 4N-14A-S TOP OF PROD ON PLAT (582'FNL & 300'FWL, SEC.13)	6960.00	-2275.89	566.56	3213064.19	1423715.56	40°29'38.306"N	104°44'02.094"W	point
FALKEN 4N-14A-S BHL ON PLAT (563'FNL & 460'FWL, SEC.09)	6973.00	-2254.34	-4594.50	3207903.33	1423692.64	40°29'38.515"N	104°45'08.896"W	point
FALKEN 4N-14A-S TOP OF PROD REV-2 (582'FNL & 300'FWL, SEC.13)	6997.08	-2275.89	566.56	3213064.19	1423715.56	40°29'38.306"N	104°44'02.094"W	circle
FALKEN 4N-14A-S BHL REV-2 (563'FNL & 460'FWL, SEC.14)	7030.37	-2254.34	-4594.50	3207903.33	1423692.64	40°29'38.515"N	104°45'08.896"W	circle



SRC ENERGY

Actual Wellpath Report

FALKEN 4N-14A-S AWP

Page 7 of 8



**BAKER
HUGHES**

REFERENCE WELLPATH IDENTIFICATION

Operator	SRC ENERGY	Slot	SLOT#15 FALKEN 4N-14A-S (1694'FSL & 276'FEL, SEC.11)
Area	COLORADO	Well	FALKEN 4N-14A-S
Field	WELD COUNTY (NAD83,TRUE NORTH)	Wellbore	FALKEN 4N-14A-S AWB
Facility	SEC.11-T06N-R66W		

WELLPATH COMPOSITION - Ref Wellbore: FALKEN 4N-14A-S AWB Ref Wellpath: FALKEN 4N-14A-S AWP

Start MD [ft]	End MD [ft]	Positional Uncertainty Model	Log Name/Comment	Wellbore
25.00	1746.00	BHI NaviTrak (Standard)	13 1/2" APS EM SURVEYS <153'-1746'>	FALKEN 4N-14A-S AWB
1746.00	13052.00	BHI AutoTrak Curve (IFR1, Short)	8 1/2" BHI ATC (IRF; SHORT) <1840-13052>	FALKEN 4N-14A-S AWB
13052.00	13076.00	Blind Drilling (std)	Projection to bit	FALKEN 4N-14A-S AWB



SRC ENERGY

Actual Wellpath Report

FALKEN 4N-14A-S AWP

Page 8 of 8



**BAKER
HUGHES**

REFERENCE WELLPATH IDENTIFICATION

Operator	SRC ENERGY	Slot	SLOT#15 FALKEN 4N-14A-S (1694'FSL & 276'FEL, SEC.11)
Area	COLORADO	Well	FALKEN 4N-14A-S
Field	WELD COUNTY (NAD83,TRUE NORTH)	Wellbore	FALKEN 4N-14A-S AWB
Facility	SEC.11-T06N-R66W		

WELLPATH COMMENTS

MD [ft]	Inclination [°]	Azimuth [°]	TVD [ft]	Comment
7968.00	90.550	273.270	6994.31	LANDING POINT (573'FNL & 212'FWL, SEC.13)
13052.00	90.090	279.490	7021.41	LAST BHGE MWD SURVEY (575'FNL & 464'FWL, SEC.14)
13076.00	90.090	279.490	7021.37	PROJECTION TO BIT (570'FNL & 440'FWL, SEC.14)