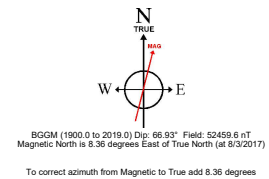
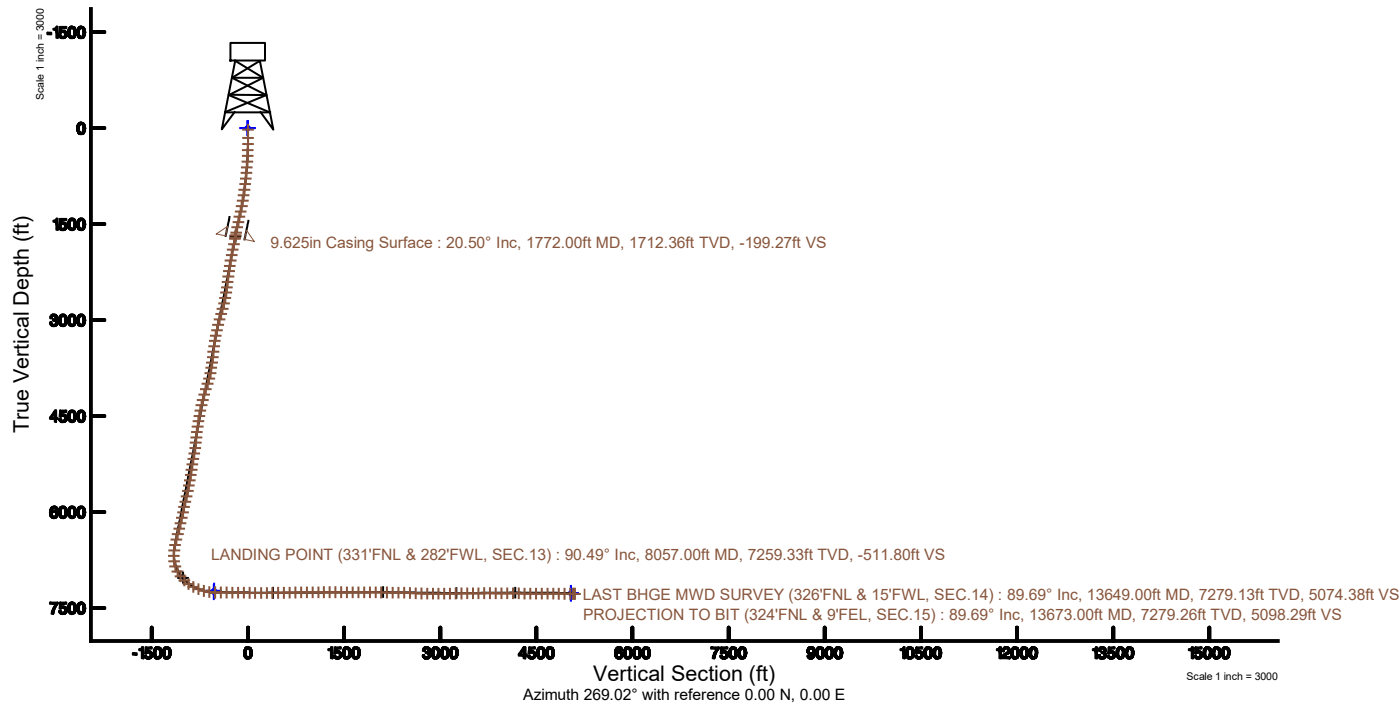
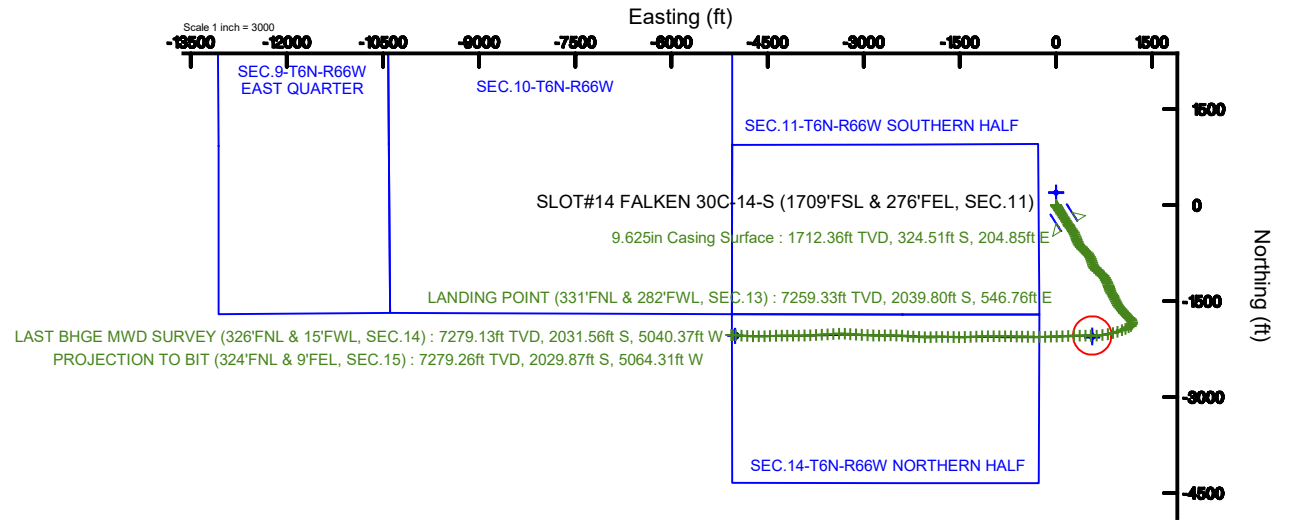


# SRC ENERGY

Location: COLORADO Slot: SLOT#14 FALKEN 30C-14-S (1709'FSL & 276'FEL, SEC.11)  
 Field: WELD COUNTY (NAD83, TRUE NORTH) Well: FALKEN 30C-14-S  
 Facility: SEC.11-T06N-R66W Wellbore: FALKEN 30C-14-S PWB

Plot reference wellpath is FALKEN 30C-14-S PWB (REV-B.0)	Grid System: NAD83 / Lambert Colorado SP, Northern Zone (501), US feet
True vertical depths are referenced to PRECISION DRILLING 562 (25') (RKB)	* = Wellpath was transformed from a different geodetic datum
Measured depths are referenced to PRECISION DRILLING 562 (25') (RKB)	North Reference: True north
PRECISION DRILLING 562 (25') (RKB) to Mean Sea Level: 4835 feet	Scale: True distance
Mean Sea Level to Mud line (At Slot: SLOT#14 FALKEN 30C-14-S (1709'FSL & 276'FEL, SEC.11)): 0 feet	Depths are in feet
Coordinates are in feet referenced to Slot	Created by: doddanna on 2018-02-06
	Database: WellArchitectDB





# Actual Wellpath Report

FALKEN 30C-14-S AWP

Page 1 of 9



## REFERENCE WELLPATH IDENTIFICATION

Operator	SRC ENERGY	Slot	SLOT#14 FALKEN 30C-14-S (1709'FSL & 276'FEL, SEC.11)
Area	COLORADO	Well	FALKEN 30C-14-S
Field	WELD COUNTY (NAD83,TRUE NORTH)	Wellbore	FALKEN 30C-14-S AWB
Facility	SEC.11-T06N-R66W		

## REPORT SETUP INFORMATION

Projection System	NAD83 / Lambert Colorado SP, Northern Zone (501), US feet	Software System	WellArchitect® 5.0
North Reference	True	User	Doddanna
Scale	0.999966	Report Generated	2/6/2018 at 2:22:56 PM
Convergence at slot	0.49° East	Database/Source file	WellArchitectDB/FALKEN_30C-14-S_AWP.xml

## WELLPATH LOCATION

	Local coordinates		Grid coordinates		Geographic coordinates	
	North[ft]	East[ft]	Easting[US ft]	Northing[US ft]	Latitude	Longitude
Slot Location	-194.91	-1.67	3212478.22	1426001.34	40°30'00.943"N	104°44'09.424"W
Facility Reference Pt			3212478.20	1426196.25	40°30'02.869"N	104°44'09.402"W
Field Reference Pt			3171284.48	1426358.81	40°30'07.643"N	104°53'02.634"W

## WELLPATH DATUM

Calculation method	Minimum curvature	PRECISION DRILLING 562 (25') (RKB) to Facility Vertical Datum	4835.00ft
Horizontal Reference Pt	Slot	PRECISION DRILLING 562 (25') (RKB) to Mean Sea Level	4835.00ft
Vertical Reference Pt	PRECISION DRILLING 562 (25') (RKB)	PRECISION DRILLING 562 (25') (RKB) to Mud Line at Slot (SLOT#14 FALKEN 30C-14-S (1709'FSL & 276'FEL, SEC.11))	4835.00ft
MD Reference Pt	PRECISION DRILLING 562 (25') (RKB)	Section Origin	N 0.00, E 0.00 ft
Field Vertical Reference	Mean Sea Level	Section Azimuth	269.02°



# Actual Wellpath Report

FALKEN 30C-14-S AWP

Page 2 of 9



## REFERENCE WELLPATH IDENTIFICATION

Operator	SRC ENERGY	Slot	SLOT#14 FALKEN 30C-14-S (1709'FSL & 276'FEL, SEC.11)
Area	COLORADO	Well	FALKEN 30C-14-S
Field	WELD COUNTY (NAD83,TRUE NORTH)	Wellbore	FALKEN 30C-14-S AWB
Facility	SEC.11-T06N-R66W		

## WELLPATH DATA (156 stations) † = interpolated/extrapolated station

MD [ft]	Inclination [°]	Azimuth [°]	TVD [ft]	Vert Sect [ft]	North [ft]	East [ft]	DLS [°/100ft]	Comments
0.00†	0.000	218.500	0.00	0.00	0.00	0.00	0.00	
25.00	0.000	218.500	25.00	0.00	0.00	0.00	0.00	
153.00	0.330	218.500	153.00	0.23	-0.29	-0.23	0.26	
247.00	1.180	157.910	246.99	0.06	-1.40	-0.03	1.13	
342.00	2.820	147.440	341.93	-1.52	-4.27	1.59	1.76	
436.00	4.820	146.450	435.72	-4.86	-9.51	5.02	2.13	
526.00	7.300	148.310	525.21	-9.81	-17.53	10.11	2.76	
614.00	9.470	147.370	612.26	-16.47	-28.39	16.95	2.47	
704.00	10.620	146.530	700.88	-24.81	-41.54	25.52	1.29	
793.00	11.920	147.250	788.16	-34.05	-56.11	35.02	1.47	
883.00	13.170	148.070	876.01	-44.22	-72.63	45.47	1.40	
972.00	14.690	148.780	962.39	-55.12	-90.89	56.68	1.72	
1061.00	16.160	148.770	1048.18	-67.04	-111.13	68.95	1.65	
1151.00	18.450	148.220	1134.10	-80.64	-133.95	82.95	2.55	
1240.00	21.020	147.370	1217.87	-96.23	-159.37	98.97	2.91	
1330.00	22.020	146.170	1301.60	-113.86	-186.98	117.07	1.21	
1419.00	22.050	147.440	1384.09	-131.65	-214.92	135.35	0.54	
1509.00	21.940	147.080	1467.54	-149.40	-243.27	153.58	0.19	
1598.00	22.070	147.520	1550.06	-166.93	-271.33	171.60	0.24	
1688.00	21.030	148.110	1633.77	-184.06	-299.31	189.21	1.18	
1730.00	20.590	148.370	1673.03	-191.70	-312.00	197.06	1.07	
1792.00	20.460	147.530	1731.09	-202.91	-330.42	208.60	0.52	
1882.00	20.080	145.710	1815.52	-219.62	-356.46	225.74	0.82	
1971.00	19.970	143.570	1899.14	-236.82	-381.31	243.38	0.83	
2061.00	19.920	145.160	1983.74	-254.28	-406.26	261.26	0.61	
2150.00	19.810	150.580	2067.45	-269.91	-431.84	277.33	2.07	
2240.00	20.450	155.510	2151.96	-283.44	-459.43	291.34	2.01	
2329.00	20.230	158.480	2235.41	-295.05	-487.90	303.43	1.19	
2419.00	20.350	159.240	2319.83	-305.80	-517.01	314.69	0.32	
2508.00	20.460	158.860	2403.25	-316.40	-545.99	325.78	0.19	



# Actual Wellpath Report

FALKEN 30C-14-S AWP

Page 3 of 9



## REFERENCE WELLPATH IDENTIFICATION

Operator	SRC ENERGY	Slot	SLOT#14 FALKEN 30C-14-S (1709'FSL & 276'FEL, SEC.11)
Area	COLORADO	Well	FALKEN 30C-14-S
Field	WELD COUNTY (NAD83,TRUE NORTH)	Wellbore	FALKEN 30C-14-S AWB
Facility	SEC.11-T06N-R66W		

## WELLPATH DATA (156 stations)

MD [ft]	Inclination [°]	Azimuth [°]	TVD [ft]	Vert Sect [ft]	North [ft]	East [ft]	DLS [°/100ft]	Comments
2598.00	20.360	157.390	2487.60	-327.59	-575.11	337.48	0.58	
2687.00	20.580	155.290	2570.98	-339.59	-603.61	349.97	0.86	
2777.00	20.440	143.310	2655.31	-355.14	-630.60	365.98	4.66	
2866.00	20.720	138.290	2738.64	-374.48	-654.81	385.74	2.01	
2956.00	20.730	137.620	2822.81	-395.41	-678.46	407.07	0.26	
3046.00	21.280	128.370	2906.86	-418.57	-700.37	430.62	3.73	
3135.00	19.340	123.760	2990.32	-443.18	-718.59	455.53	2.82	
3225.00	18.770	136.520	3075.43	-465.22	-737.39	477.90	4.66	
3314.00	21.010	142.950	3159.12	-484.29	-760.52	497.37	3.51	
3403.00	20.290	145.260	3242.41	-502.26	-785.93	515.78	1.22	
3493.00	19.110	153.580	3327.16	-517.26	-811.96	531.23	3.38	
3582.00	20.730	158.530	3410.83	-529.04	-839.67	543.48	2.63	
3672.00	20.450	160.900	3495.09	-539.50	-869.35	554.45	0.98	
3761.00	20.560	161.300	3578.45	-549.09	-898.84	564.55	0.20	
3851.00	20.890	158.770	3662.62	-559.46	-928.77	575.43	1.06	
3941.00	20.110	156.680	3746.93	-570.89	-957.93	587.36	1.19	
4030.00	21.460	148.900	3830.15	-584.88	-985.93	601.83	3.45	
4120.00	20.940	131.330	3914.14	-605.06	-1010.67	622.43	7.06	
4209.00	21.060	125.890	3997.24	-629.61	-1030.55	647.33	2.19	
4299.00	20.980	124.840	4081.25	-655.61	-1049.24	673.66	0.43	
4388.00	20.550	127.440	4164.47	-680.77	-1067.84	699.14	1.14	
4478.00	20.130	133.960	4248.87	-704.11	-1088.19	722.83	2.56	
4567.00	20.890	143.000	4332.25	-724.29	-1111.50	743.41	3.66	
4656.00	21.920	149.750	4415.12	-741.75	-1138.53	761.33	3.00	
4746.00	21.690	153.550	4498.69	-757.11	-1167.93	777.20	1.59	
4835.00	21.710	155.550	4581.38	-770.74	-1197.64	791.34	0.83	
4925.00	19.480	152.260	4665.63	-784.13	-1226.08	805.22	2.79	
5014.00	18.800	159.470	4749.72	-795.61	-1252.65	817.16	2.76	
5104.00	20.850	161.950	4834.38	-805.17	-1281.46	827.21	2.46	
5193.00	20.140	163.020	4917.75	-814.04	-1311.18	836.59	0.90	



# Actual Wellpath Report

FALKEN 30C-14-S AWP

Page 4 of 9



## REFERENCE WELLPATH IDENTIFICATION

Operator	SRC ENERGY	Slot	SLOT#14 FALKEN 30C-14-S (1709'FSL & 276'FEL, SEC.11)
Area	COLORADO	Well	FALKEN 30C-14-S
Field	WELD COUNTY (NAD83,TRUE NORTH)	Wellbore	FALKEN 30C-14-S AWB
Facility	SEC.11-T06N-R66W		

## WELLPATH DATA (156 stations)

MD [ft]	Inclination [°]	Azimuth [°]	TVD [ft]	Vert Sect [ft]	North [ft]	East [ft]	DLS [°/100ft]	Comments
5283.00	20.910	159.290	5002.04	-823.73	-1341.02	846.79	1.69	
5372.00	20.930	149.810	5085.19	-836.86	-1369.63	860.41	3.80	
5462.00	20.560	144.790	5169.36	-853.59	-1396.43	877.61	2.02	
5551.00	17.570	152.930	5253.49	-868.30	-1421.17	892.74	4.49	
5641.00	19.670	157.230	5338.78	-879.90	-1447.24	904.78	2.79	
5730.00	21.860	151.910	5422.00	-893.01	-1475.68	918.38	3.25	
5820.00	21.850	154.120	5505.53	-907.70	-1505.53	933.58	0.91	
5909.00	21.960	153.410	5588.11	-921.86	-1535.31	948.26	0.32	
5999.00	21.980	150.190	5671.57	-937.26	-1564.97	964.17	1.34	
6089.00	20.900	139.400	5755.38	-955.63	-1591.79	982.99	4.54	
6178.00	19.790	134.100	5838.83	-976.39	-1614.33	1004.15	2.42	
6267.00	18.390	142.040	5922.95	-995.48	-1635.89	1023.61	3.31	
6357.00	20.860	144.930	6007.72	-1013.00	-1660.20	1041.55	2.95	
6446.00	20.850	137.830	6090.90	-1032.32	-1684.91	1061.29	2.84	
6536.00	19.750	136.600	6175.31	-1053.12	-1707.83	1082.49	1.31	
6625.00	18.780	134.210	6259.32	-1073.36	-1728.75	1103.09	1.40	
6715.00	18.510	130.960	6344.60	-1094.20	-1748.21	1124.27	1.19	
6804.00	18.810	128.500	6428.93	-1115.79	-1766.41	1146.16	0.95	
6894.00	16.220	137.300	6514.76	-1135.36	-1784.68	1166.05	4.11	
6983.00	17.910	154.320	6599.89	-1149.36	-1806.17	1180.42	5.90	
7073.00	19.020	172.500	6685.33	-1156.81	-1833.20	1188.34	6.49	
7162.00	19.390	200.300	6769.55	-1153.09	-1861.50	1185.10	10.19	
7252.00	24.250	227.190	6853.29	-1133.84	-1888.15	1166.30	12.21	
7341.00	32.450	242.190	6931.64	-1098.81	-1911.78	1131.67	12.14	
7431.00	39.500	248.040	7004.45	-1050.46	-1933.78	1083.69	8.71	
7520.00	47.700	249.790	7068.85	-992.85	-1955.78	1026.45	9.31	
7610.00	54.800	252.390	7125.16	-926.10	-1978.43	960.08	8.20	
7699.00	61.980	255.090	7171.78	-853.02	-1999.57	887.35	8.47	
7788.00	70.210	258.950	7207.82	-773.51	-2017.74	808.14	10.06	
7878.00	76.140	263.480	7233.88	-688.21	-2030.83	723.05	8.16	



SRC ENERGY

# Actual Wellpath Report

FALKEN 30C-14-S AWP

Page 5 of 9



## REFERENCE WELLPATH IDENTIFICATION

Operator	SRC ENERGY	Slot	SLOT#14 FALKEN 30C-14-S (1709'FSL & 276'FEL, SEC.11)
Area	COLORADO	Well	FALKEN 30C-14-S
Field	WELD COUNTY (NAD83,TRUE NORTH)	Wellbore	FALKEN 30C-14-S AWP
Facility	SEC.11-T06N-R66W		

## WELLPATH DATA (156 stations)

MD [ft]	Inclination [°]	Azimuth [°]	TVD [ft]	Vert Sect [ft]	North [ft]	East [ft]	DLS [°/100ft]	Comments
7967.00	80.260	266.340	7252.08	-601.35	-2038.55	636.31	5.60	
8057.00	90.490	272.010	7259.33	-511.80	-2039.80	546.76	12.98	LANDING POINT (331'FNL & 282'FWL, SEC.13)
8146.00	90.220	269.860	7258.78	-422.85	-2038.35	457.78	2.43	
8236.00	89.230	269.070	7259.21	-332.86	-2039.19	367.79	1.41	
8326.00	89.320	268.330	7260.35	-242.87	-2041.23	277.82	0.83	
8415.00	89.170	267.250	7261.52	-153.90	-2044.66	188.90	1.23	
8504.00	89.230	267.150	7262.76	-64.95	-2049.01	100.01	0.13	
8594.00	89.170	267.800	7264.02	25.01	-2052.98	10.11	0.73	
8683.00	89.140	268.290	7265.33	113.98	-2056.01	-78.83	0.55	
8773.00	89.110	268.610	7266.71	203.97	-2058.45	-168.79	0.36	
8863.00	90.800	270.290	7266.78	293.96	-2059.31	-258.78	2.65	
8952.00	90.680	270.620	7265.63	382.93	-2058.60	-347.77	0.39	
9041.00	90.770	270.690	7264.50	471.88	-2057.59	-436.75	0.13	
9131.00	90.680	271.480	7263.36	561.82	-2055.88	-526.73	0.88	
9220.00	91.450	271.720	7261.71	650.71	-2053.40	-615.68	0.91	
9310.00	91.390	271.280	7259.48	740.60	-2051.04	-705.62	0.49	
9399.00	91.420	270.960	7257.30	829.51	-2049.30	-794.58	0.36	
9489.00	90.370	269.600	7255.89	919.47	-2048.86	-884.56	1.91	
9578.00	90.340	270.410	7255.34	1008.46	-2048.86	-973.56	0.91	
9668.00	90.310	268.910	7254.83	1098.45	-2049.39	-1063.55	1.67	
9757.00	90.280	267.800	7254.37	1187.44	-2051.94	-1152.51	1.25	
9847.00	89.850	266.920	7254.27	1277.40	-2056.09	-1242.42	1.09	
9936.00	90.060	267.680	7254.34	1366.36	-2060.28	-1331.32	0.89	
10025.00	89.600	268.410	7254.60	1455.35	-2063.32	-1420.26	0.97	
10115.00	89.510	270.820	7255.30	1545.33	-2063.92	-1510.25	2.68	
10204.00	88.610	271.280	7256.76	1634.26	-2062.29	-1599.22	1.14	
10294.00	90.310	271.260	7257.61	1724.19	-2060.30	-1689.20	1.89	
10383.00	90.310	269.610	7257.13	1813.16	-2059.62	-1778.19	1.85	
10472.00	90.220	267.690	7256.72	1902.15	-2061.72	-1867.16	2.16	
10562.00	88.280	268.950	7257.89	1992.13	-2064.36	-1957.11	2.57	



# Actual Wellpath Report

FALKEN 30C-14-S AWP

Page 6 of 9



## REFERENCE WELLPATH IDENTIFICATION

Operator	SRC ENERGY	Slot	SLOT#14 FALKEN 30C-14-S (1709'FSL & 276'FEL, SEC.11)
Area	COLORADO	Well	FALKEN 30C-14-S
Field	WELD COUNTY (NAD83,TRUE NORTH)	Wellbore	FALKEN 30C-14-S AWB
Facility	SEC.11-T06N-R66W		

## WELLPATH DATA (156 stations)

MD [ft]	Inclination [°]	Azimuth [°]	TVD [ft]	Vert Sect [ft]	North [ft]	East [ft]	DLS [°/100ft]	Comments
10651.00	90.740	271.730	7258.66	2081.09	-2063.83	-2046.09	4.17	
10740.00	88.920	272.400	7258.92	2169.95	-2060.62	-2135.02	2.18	
10830.00	89.140	274.000	7260.44	2259.70	-2055.60	-2224.87	1.79	
10919.00	89.020	274.830	7261.87	2348.29	-2048.75	-2313.59	0.94	
11009.00	89.320	273.960	7263.18	2437.89	-2041.85	-2403.32	1.02	
11098.00	87.410	271.470	7265.72	2526.65	-2037.64	-2492.17	3.53	
11188.00	87.290	270.060	7269.88	2616.51	-2036.44	-2582.06	1.57	
11278.00	87.630	268.970	7273.87	2706.42	-2037.20	-2671.97	1.27	
11367.00	89.970	269.470	7275.73	2795.39	-2038.41	-2760.93	2.69	
11457.00	89.940	271.840	7275.80	2885.35	-2037.38	-2850.92	2.63	
11546.00	89.820	273.610	7275.99	2974.16	-2033.15	-2939.82	1.99	
11636.00	89.940	273.030	7276.18	3063.91	-2027.94	-3029.67	0.66	
11725.00	90.370	272.930	7275.93	3152.69	-2023.31	-3118.55	0.50	
11815.00	91.080	274.750	7274.80	3242.37	-2017.28	-3208.33	2.17	
11904.00	90.490	272.740	7273.58	3331.05	-2011.47	-3297.13	2.35	
11993.00	90.620	269.160	7272.71	3419.98	-2010.00	-3386.10	4.02	
12083.00	90.830	266.480	7271.57	3509.94	-2013.42	-3476.02	2.99	
12172.00	90.680	266.780	7270.40	3598.86	-2018.65	-3564.86	0.38	
12262.00	90.860	266.180	7269.19	3688.76	-2024.18	-3654.68	0.70	
12351.00	89.570	267.050	7268.86	3777.68	-2029.43	-3743.52	1.75	
12441.00	89.230	267.420	7269.80	3867.63	-2033.77	-3833.41	0.56	
12530.00	89.820	267.290	7270.54	3956.59	-2037.88	-3922.31	0.68	
12620.00	89.970	268.800	7270.70	4046.58	-2040.95	-4012.25	1.69	
12709.00	89.380	270.870	7271.21	4135.56	-2041.21	-4101.25	2.42	
12799.00	89.020	271.650	7272.47	4225.48	-2039.23	-4191.22	0.95	
12888.00	87.480	268.370	7275.18	4314.41	-2039.21	-4280.16	4.07	
12978.00	89.570	267.140	7277.50	4404.35	-2042.74	-4370.05	2.69	
13069.00	90.460	267.870	7277.48	4495.32	-2046.70	-4460.97	1.26	
13158.00	89.780	268.290	7277.29	4584.31	-2049.68	-4549.92	0.90	
13248.00	89.850	270.430	7277.58	4674.30	-2050.68	-4639.90	2.38	



# Actual Wellpath Report

FALKEN 30C-14-S AWP

Page 7 of 9



## REFERENCE WELLPATH IDENTIFICATION

Operator	SRC ENERGY	Slot	SLOT#14 FALKEN 30C-14-S (1709'FSL & 276'FEL, SEC.11)
Area	COLORADO	Well	FALKEN 30C-14-S
Field	WELD COUNTY (NAD83,TRUE NORTH)	Wellbore	FALKEN 30C-14-S AWB
Facility	SEC.11-T06N-R66W		

## WELLPATH DATA (156 stations)

MD [ft]	Inclination [°]	Azimuth [°]	TVD [ft]	Vert Sect [ft]	North [ft]	East [ft]	DLS [°/100ft]	Comments
13337.00	89.600	271.900	7278.01	4763.23	-2048.87	-4728.88	1.68	
13426.00	89.850	272.660	7278.44	4852.09	-2045.33	-4817.81	0.90	
13516.00	89.820	273.350	7278.69	4941.87	-2040.62	-4907.69	0.77	
13605.00	89.850	274.230	7278.95	5030.56	-2034.73	-4996.49	0.99	
13649.00	89.690	274.040	7279.13	5074.38	-2031.56	-5040.37	0.56	LAST BHGE MWD SURVEY (326'FNL & 15'FWL, SEC.14)
13673.00	89.690	274.040	7279.26	5098.29	-2029.87	-5064.31	0.00	PROJECTION TO BIT (324'FNL & 9'FEL, SEC.15)

## HOLE & CASING SECTIONS - Ref Wellbore: FALKEN 30C-14-S AWB Ref Wellpath: FALKEN 30C-14-S AWP

String/Diameter	Start MD [ft]	End MD [ft]	Interval [ft]	Start TVD [ft]	End TVD [ft]	Start N/S [ft]	Start E/W [ft]	End N/S [ft]	End E/W [ft]
13.5in Open Hole	25.00	1772.00	1747.00	25.00	1712.36	0.00	0.00	-324.51	204.85
9.625in Casing Surface	25.00	1772.00	1747.00	25.00	1712.36	0.00	0.00	-324.51	204.85
8.5in Open Hole	1772.00	13673.00	11901.00	1712.36	7279.26	-324.51	204.85	-2029.87	-5064.31





# Actual Wellpath Report

FALKEN 30C-14-S AWP

Page 8 of 9



REFERENCE WELLPATH IDENTIFICATION			
Operator	SRC ENERGY	Slot	SLOT#14 FALKEN 30C-14-S (1709'FSL & 276'FEL, SEC.11)
Area	COLORADO	Well	FALKEN 30C-14-S
Field	WELD COUNTY (NAD83,TRUE NORTH)	Wellbore	FALKEN 30C-14-S AWB
Facility	SEC.11-T06N-R66W		

TARGETS								
Name	TVD [ft]	North [ft]	East [ft]	Grid East [US ft]	Grid North [US ft]	Latitude	Longitude	Shape
SEC.10-T6N-R66W	0.00	194.91	1.67	3212478.20	1426196.25	40°30'02.869"N	104°44'09.402"W	polygon
SEC.11-T6N-R66W SOUTHERN HALF	0.00	194.91	1.67	3212478.20	1426196.25	40°30'02.869"N	104°44'09.402"W	polygon
SEC.14-T6N-R66W NORTHERN HALF	0.00	194.91	1.67	3212478.20	1426196.25	40°30'02.869"N	104°44'09.402"W	polygon
SEC.9-T6N-R66W EAST QUARTER	0.00	194.91	1.67	3212478.20	1426196.25	40°30'02.869"N	104°44'09.402"W	polygon
FALKEN 30C-14-S TOP OF PROD ON PLAT (359'FNL & 300'FWL, SEC.13)	7232.00	-2067.86	565.16	3213061.15	1423938.49	40°29'40.510"N	104°44'02.108"W	point
FALKEN 30C-14-S TOP OF PROD REV-2 (329'FNL & 300'FWL, SEC.13)	7251.30	-2037.86	565.16	3213060.90	1423968.50	40°29'40.806"N	104°44'02.108"W	circle
FALKEN 30C-14-S BHL REV-2 (336'FNL & 50'FWL, SEC.09)	7265.24	-2041.86	-5004.98	3207491.20	1423916.50	40°29'40.762"N	104°45'14.206"W	circle
FALKEN 30C-14-S BHL ON PLAT (336'FNL & 50'FWL, SEC.09)	7277.00	-2041.86	-5004.97	3207491.20	1423916.50	40°29'40.762"N	104°45'14.206"W	point

WELLPATH COMPOSITION - Ref Wellbore: FALKEN 30C-14-S AWB					Ref Wellpath: FALKEN 30C-14-S AWP	
Start MD [ft]	End MD [ft]	Positional Uncertainty Model	Log Name/Comment		Wellbore	
25.00	1730.00	Custom BHI NaviTrak (Standard Rotating+Axial Corr) (Rockies 0.03Gt model)	13 1/2" APS EM SURVEYS <153'-1730>		FALKEN 30C-14-S AWB	
1730.00	13649.00	BHI AutoTrak Curve (IFR1, Short)	8 1/2" AT-CURVE SURVEYS <1792-13649>		FALKEN 30C-14-S AWB	
13649.00	13673.00	Blind Drilling (std)	Projection to bit		FALKEN 30C-14-S AWB	



# Actual Wellpath Report

FALKEN 30C-14-S AWP  
Page 9 of 9



## REFERENCE WELLPATH IDENTIFICATION

Operator	SRC ENERGY	Slot	SLOT#14 FALKEN 30C-14-S (1709'FSL & 276'FEL, SEC.11)
Area	COLORADO	Well	FALKEN 30C-14-S
Field	WELD COUNTY (NAD83,TRUE NORTH)	Wellbore	FALKEN 30C-14-S AWB
Facility	SEC.11-T06N-R66W		

## WELLPATH COMMENTS

MD [ft]	Inclination [°]	Azimuth [°]	TVD [ft]	Comment
8057.00	90.490	272.010	7259.33	LANDING POINT (331'FNL & 282'FWL, SEC.13)
13649.00	89.690	274.040	7279.13	LAST BHGE MWD SURVEY (326'FNL & 15'FWL, SEC.14)
13673.00	89.690	274.040	7279.26	PROJECTION TO BIT (324'FNL & 9'FEL, SEC.15)