

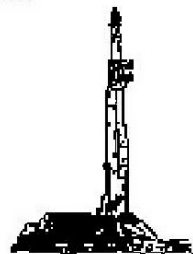
**GOOLSBY BROTHERS**  
and associates, inc.

575 Union Blvd, Suite 208  
Lakewood, CO 80228  
303-945-2860 Office



Geological Wellsite  
Supervision

[www.goolsbybrothers.com](http://www.goolsbybrothers.com)



Scale 1:240 (5"=100') Imperial  
Measured Depth Log

Well Name: Falken 30C-14-S

API: 051234511900

Location: NE/SE Section 11 T6N R66W Weld County, CO.

License Number:

Spud Date: December 22, 2017

Surface Coordinates: 1709'FSL & 276'FEL NE/SE Sec.11 T6N R66W

Lat/Long: 40.500262 N / -104.735951 W

Bottom Hole Coordinates: Planned: 336'FNL & 50'FWL NW/NW Sec.14 T6N R66W

Projected: 321'FNL & 60'FWL NW/NW Sec. 14 T6N R66W

Ground Elevation (ft): 4,810'

K.B. Elevation (ft): 4,835'

Logged Interval (ft): 7000'

To: 13,673'

Total Depth (ft): 13,673' DMTD

Formation: Codell SS

Type of Drilling Fluid: OBM (LSND Surface).

Region: Wattenberg

Drilling Completed: December 26, 2017

Printed by HORIZONTAL.LOG from WellSight Systems 1-800-447-1534 [www.WellSight.com](http://www.WellSight.com)

**OPERATOR**

Company: SRC Energy, Inc

Geologist: Tom Jacaruso

Address: 1675 Broadway, Suite 2600

Denver, Colorado 80202

(720) 616-4300

**GEOLOGIST**

Name: Tekabe Gedamu & Blake Stacey

Company: Goolsby Brothers & Assoc. (GBA), Inc. ([www.goolsbybrothers.com](http://www.goolsbybrothers.com))

Address: 575 Union Blvd. Suite 208,

Lakewood CO. 80228

Tel 303-618-7736

## E-logs

MWD GR from S.C. to 13,660' MD

## Casing

9 5/8" Surface Casing pre set @ 1800' MD.

5 1/2" Production Liner run on 12/27/2017 and set at 13,655' MD.

## Comments

1) Drilling Contractor: Precision Drilling, Rig #562

Pumps 1&2: Rostell F-1600 5" x 12" (.0692 Bbls./stroke)

Toolpusher: Michael Ellingsworth, Tyson Westgard.

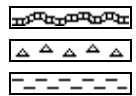
2) Company Man: Kent Priddy  
Kevin Brakovec  
Tim Jones  
Kalib Ford

3) Mud Comapny : Reliable Drilling Fluids  
Engineer: Wally Yates, Scott Allen

4) Directional Drilling: Baker Hughes  
Drillers: Jeremiah Samson, Aaron Herskind  
MWD: Matthew Leopold, Garrett Gersden, Baker Remote Field Operations.

5) Gas Equipment: Pason Gas Analyzer (Spectrometer)

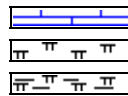
## ROCK TYPES



Bent  
Cht  
Clyst



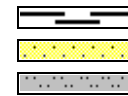
Oil sat.  
Dol  
Lmst



Chalk  
Mrlst  
Mrlst\_sh (intbdd)



Shale  
Shgy  
Slty sh



Carb sh  
Ss  
Slstst

## ACCESSORIES

### MINERAL

Anhy  
 Arggrn  
 Arg  
 Bent  
 Bit  
 Brecfrag  
 Calc  
 Carb  
 Chtdk  
 Chtlt  
 Dol  
 Feldspar  
 Ferrpel  
 Ferr  
 Glau

Gyp  
 Hvymin  
 Kaol  
 Marl  
 Minxl  
 Nodule  
 Phos  
 Pyr  
 Salt  
 Sandy  
 Silt  
 Sil  
 Sulphur  
 Tuff

### FOSSIL

Algae  
 Amph  
 Belm  
 Bioclst  
 Brach  
 Bryozoa  
 Cephal  
 Coral  
 Crin  
 Echin  
 Fish  
 Foram  
 Fossil  
 Gastro  
 Oolite

Ostra  
 Pelec  
 Pellet  
 Pisolite  
 Plant  
 Strom

### STRINGER

Chlkstg  
 Arg  
 Bent  
 Dol  
 Ls  
 Mrst  
 Sltstrg  
 Ssstrg

### TEXTURE

Boundst  
 Chalky  
 Cryxln  
 Earthy  
 Finexln  
 Grainst  
 Lithogr  
 Microxln  
 Mudst  
 Packst  
 Wackest

## OTHER SYMBOLS

### OIL SHOWS

Even  
 Spotted  
 Ques  
 Dead  
 Vspotty

near even

### POROSITY TYPE

Earthy  
 Fenest  
 Fracture

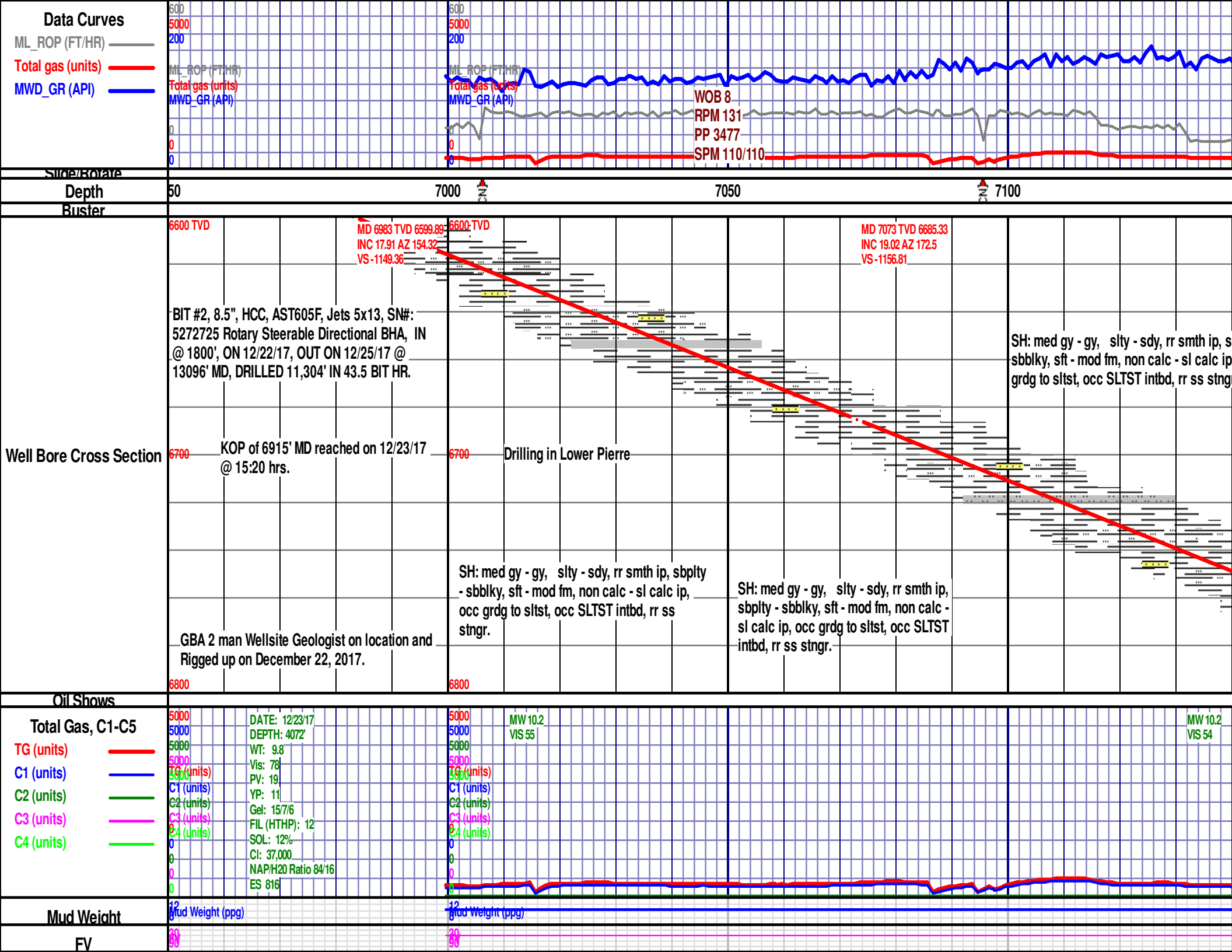
Inter  
 Moldic  
 Organic  
 Pinpoint  
 Vuggy

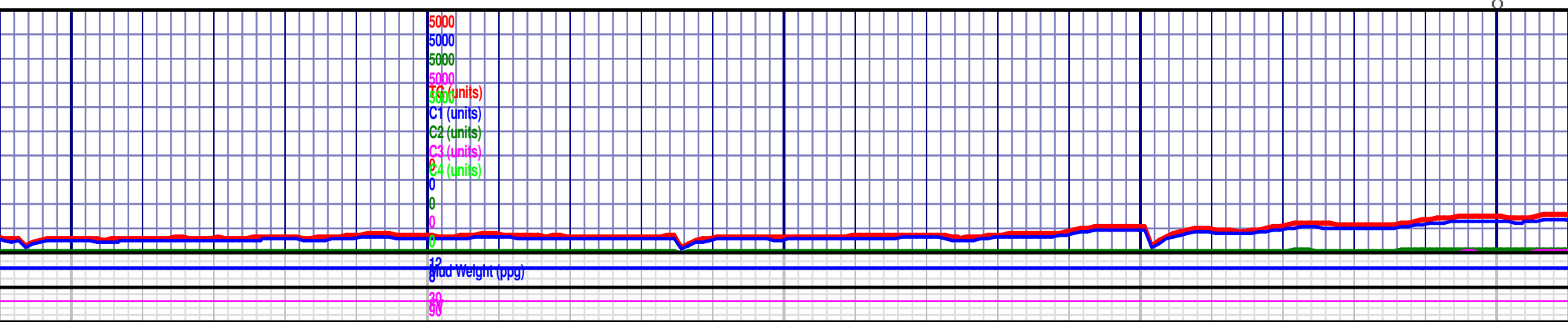
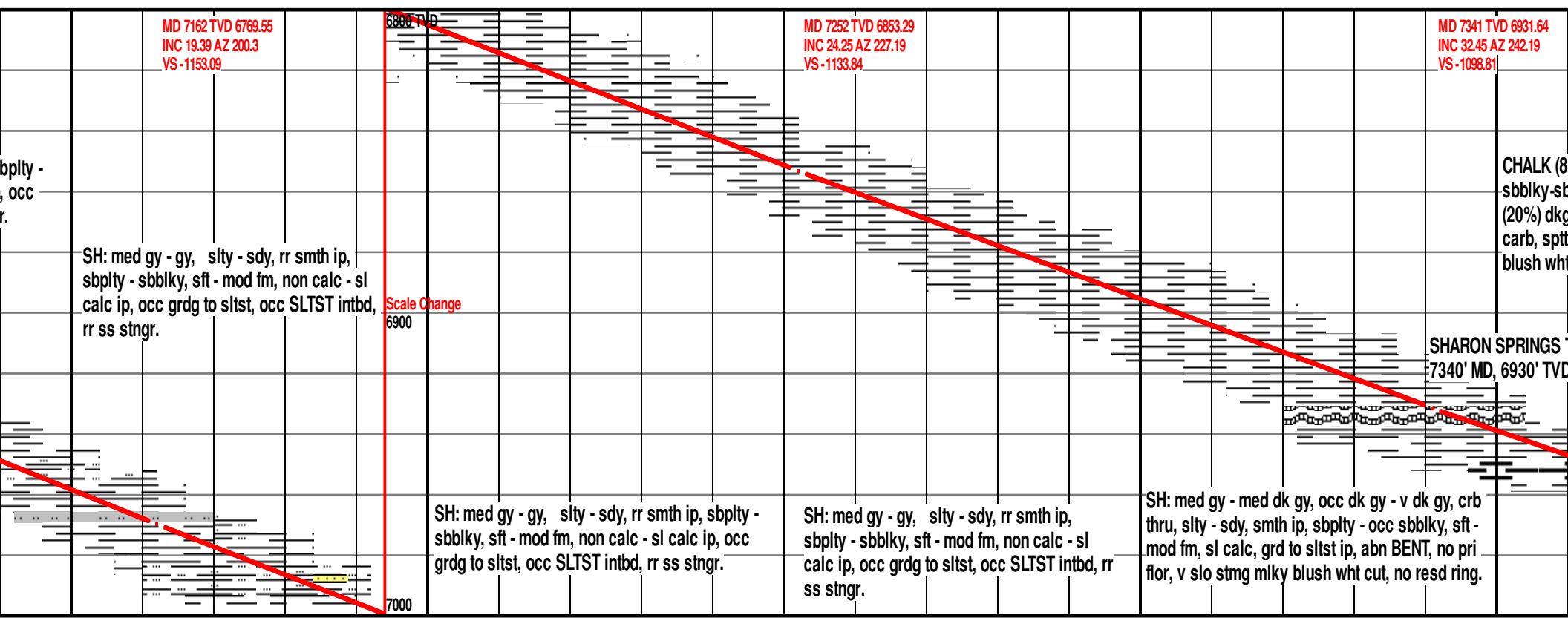
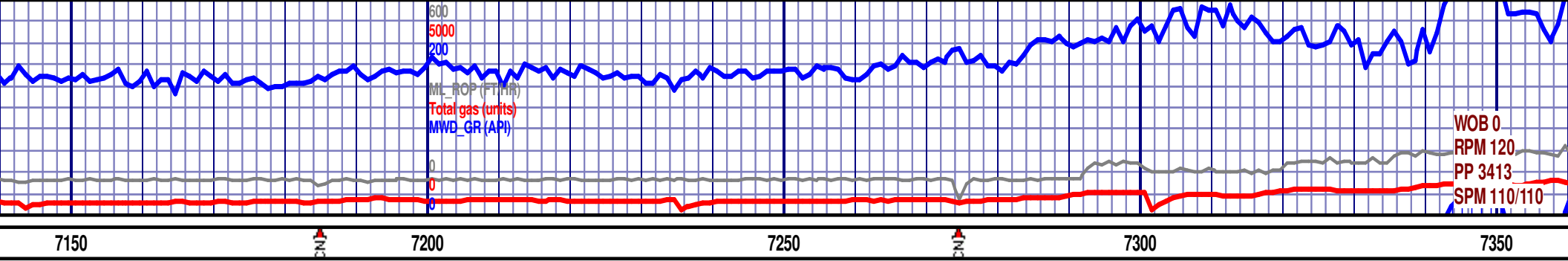
### ROUNDING

Rounded  
 Subrnd  
 Subang  
 Angular

### SORTING

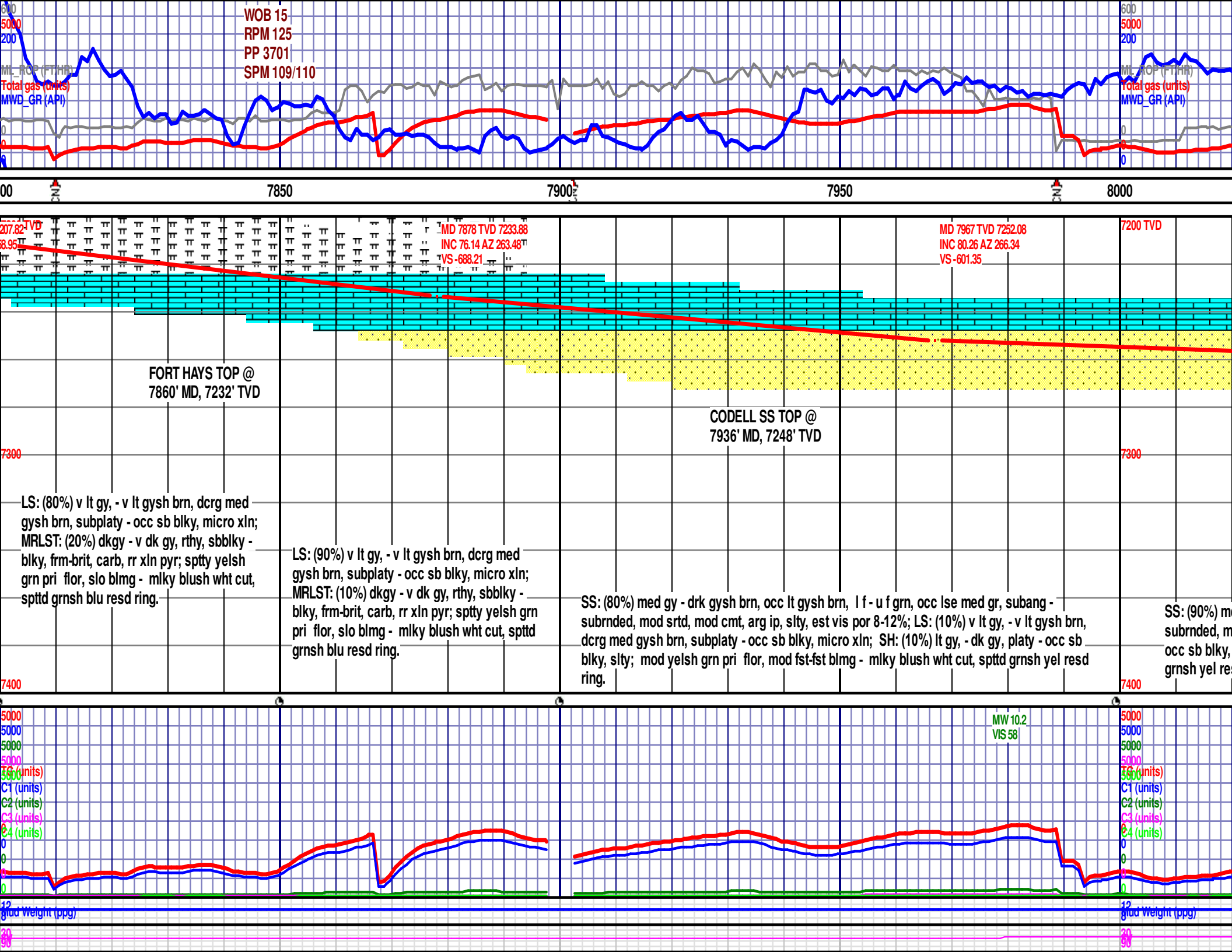
Well  
 Moderate  
 Poor







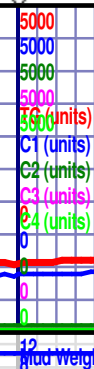
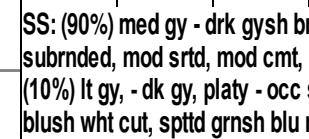


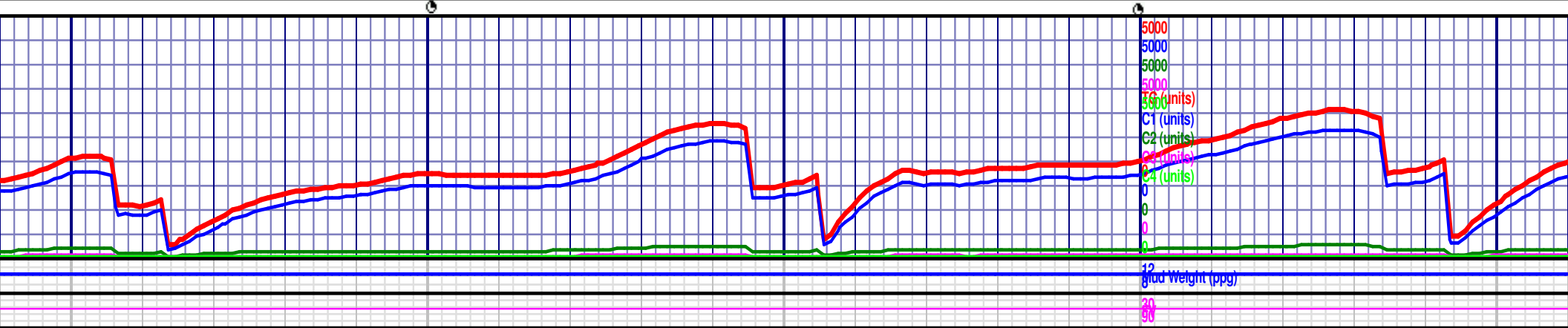
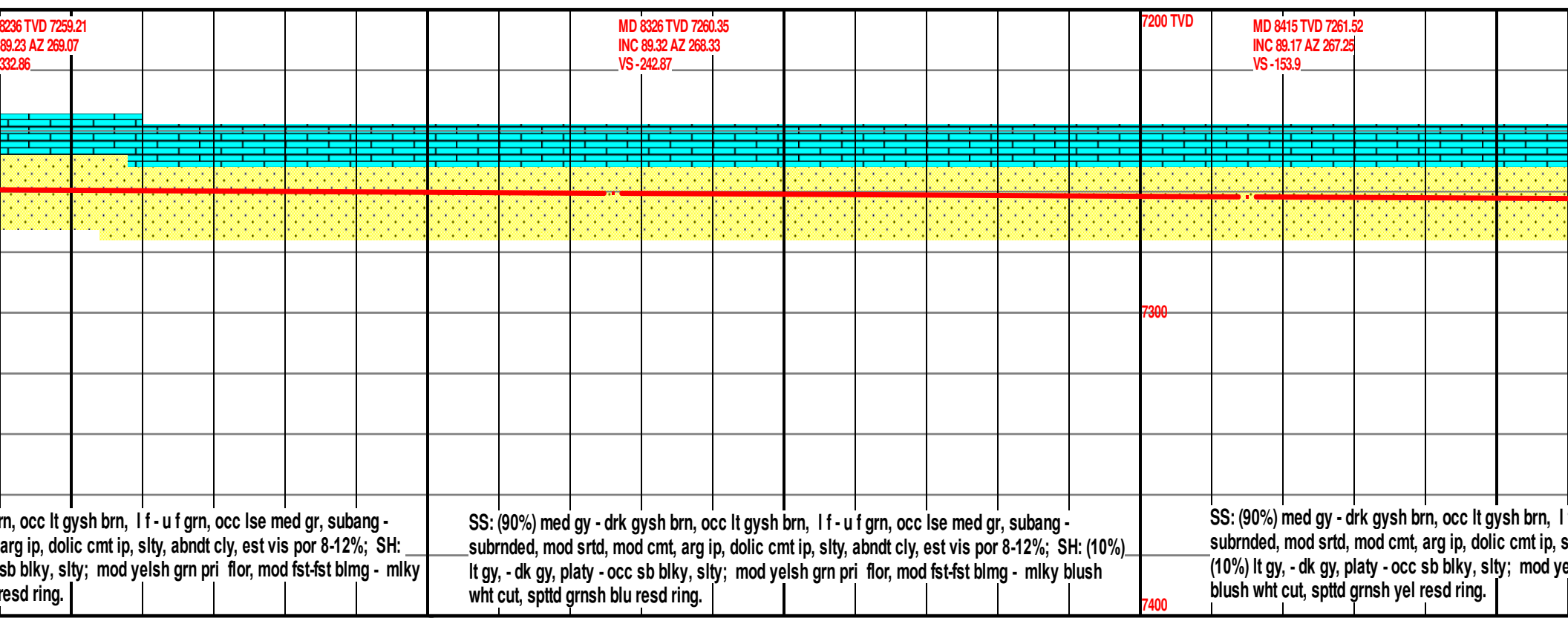
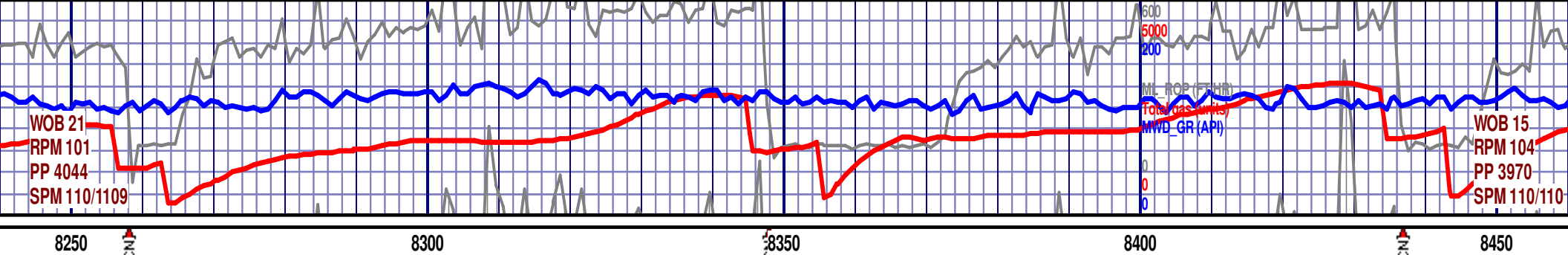


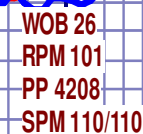




7200 TVD







MD 8594 TVD 7264.02  
INC 89.17 AZ 267.8  
VS 25.01

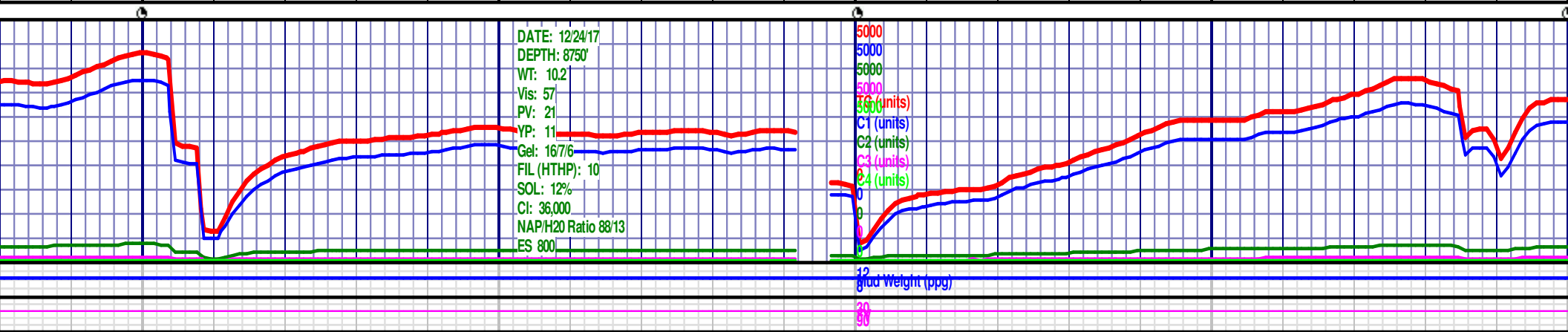
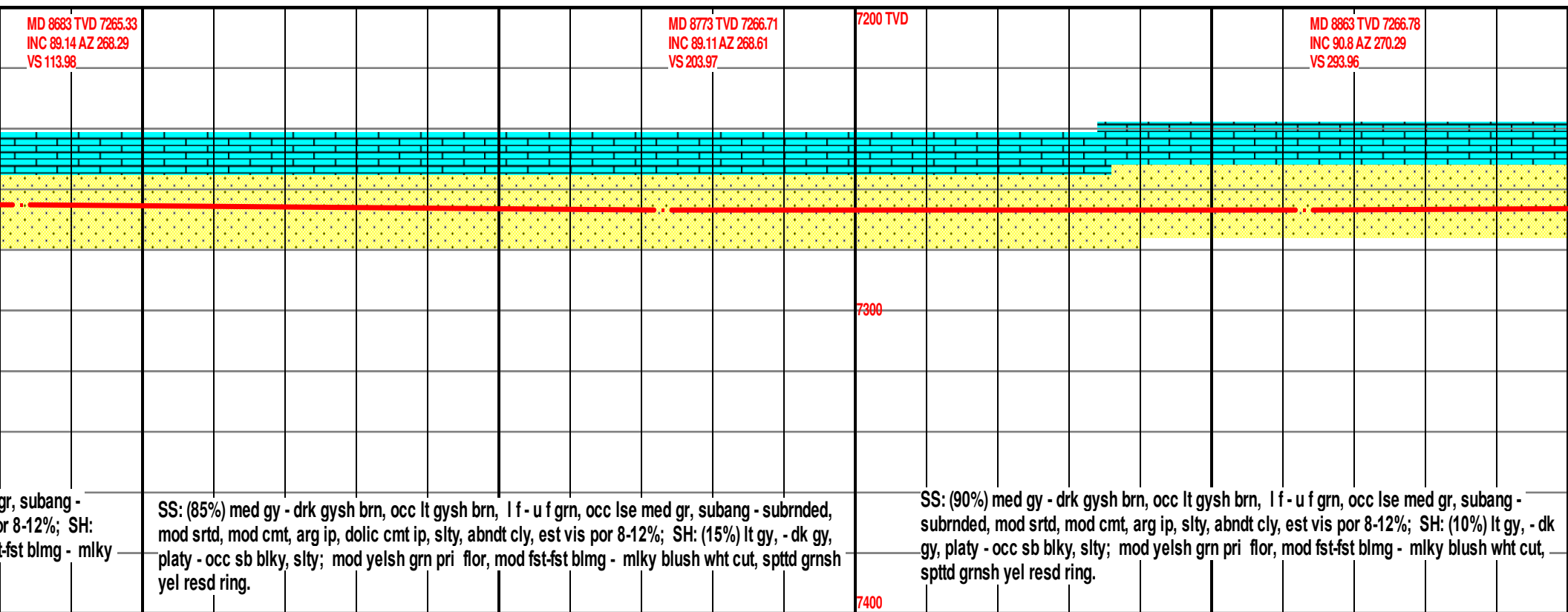
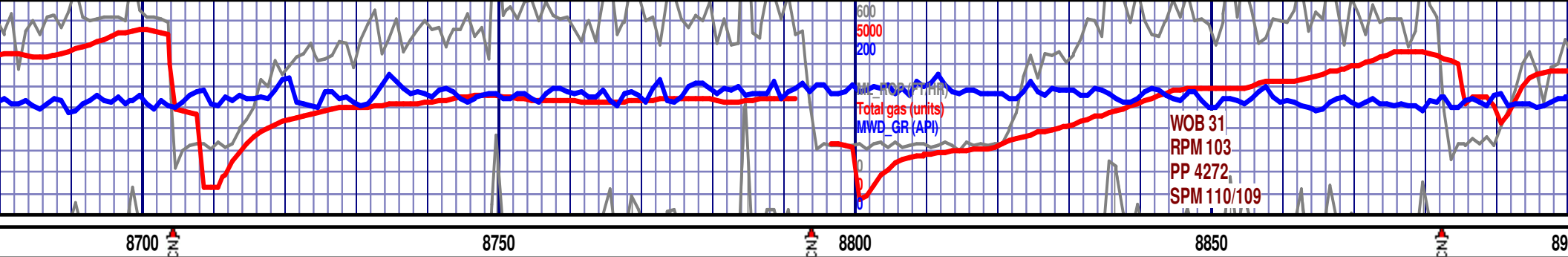


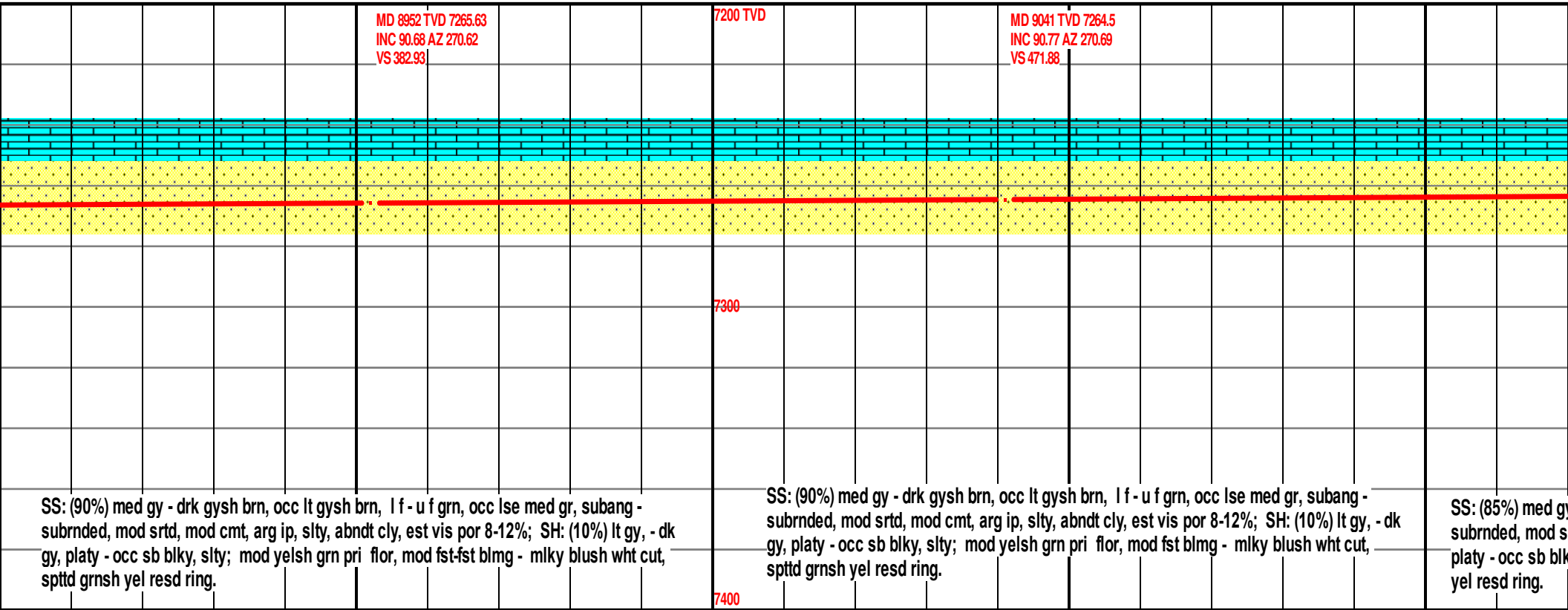
SS: (90%) med gy - drk gysh brn, occ lt gysh brn, l f - u f grn, occ lse med gr, subang - subrnded, mod srtd, mod cmt, arg ip, dolc cmt ip, slty, abndt cly, est vis por 8-12%; SH: (10%) lt gy, - dk gy, platy - occ sb blk, slty; mod yelsh grn pri flor, mod fst-fst blmg - mlky blush wht cut, spstd grnsh yel resd ring.

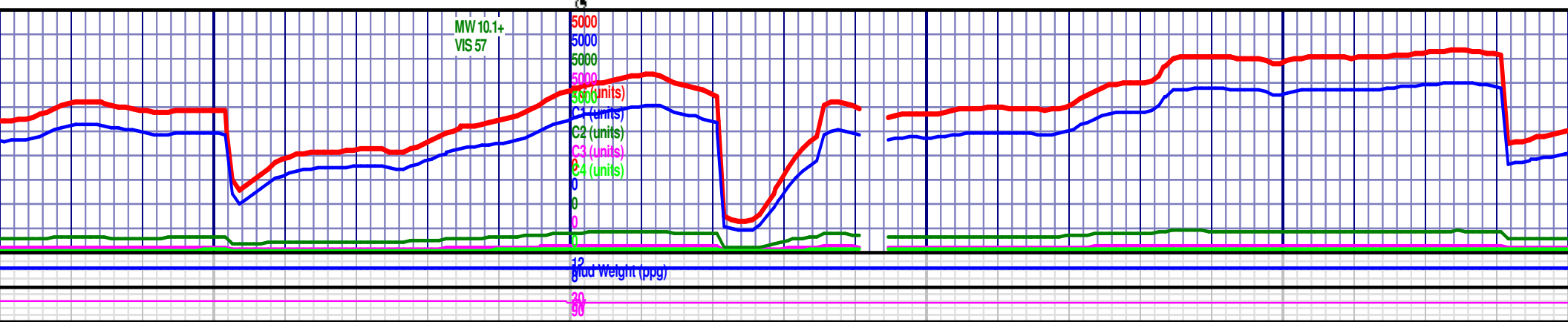
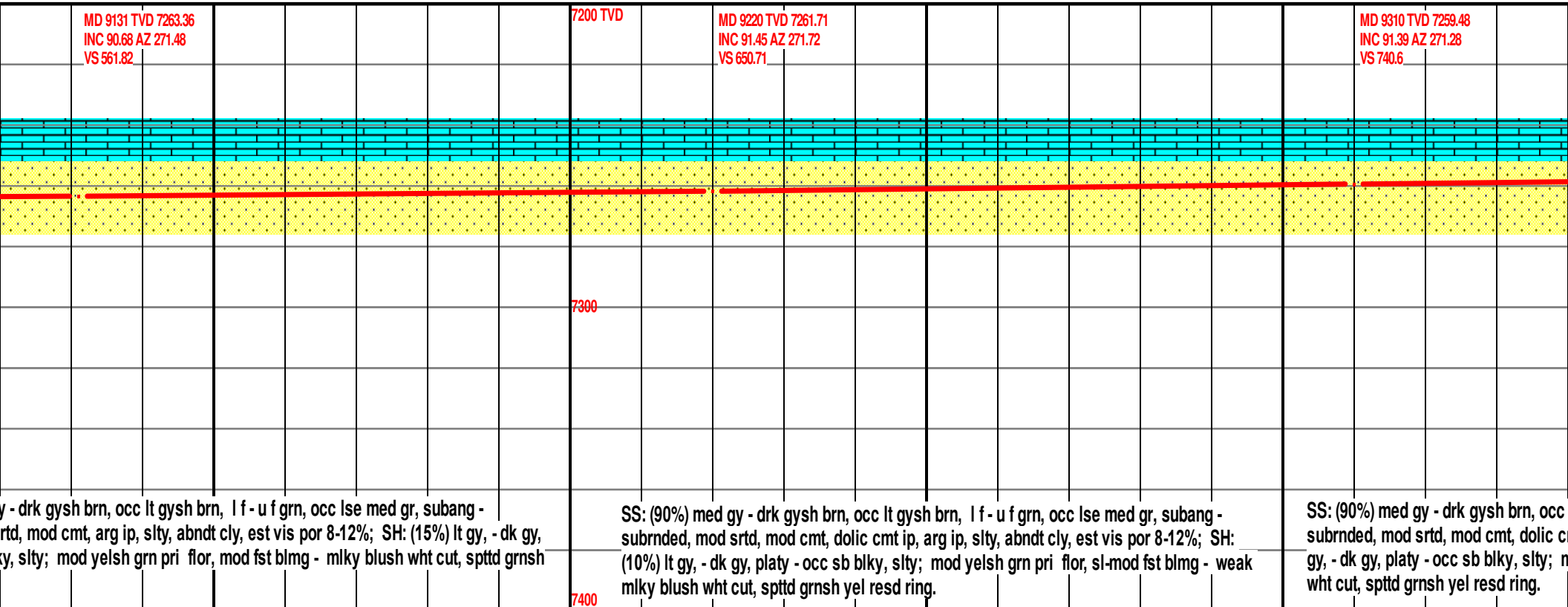
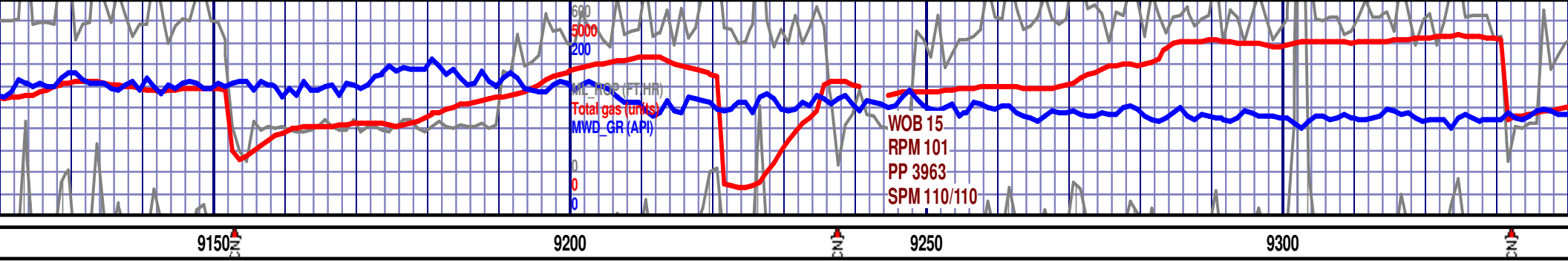
SS: (90%) med gy - drk gysh brn, occ lt gysh brn, l f - u f grn, occ lse med  
subrnded, mod srted, mod cmt, arg ip, dolc cmt ip, slty, abndt cly, est vis po  
(10%) lt gy, - dk gy, platy - occ sb blkly, slty; mod yelsh grn pri flor, mod fst  
blush wht cut, spttd grnsh yel resd ring.



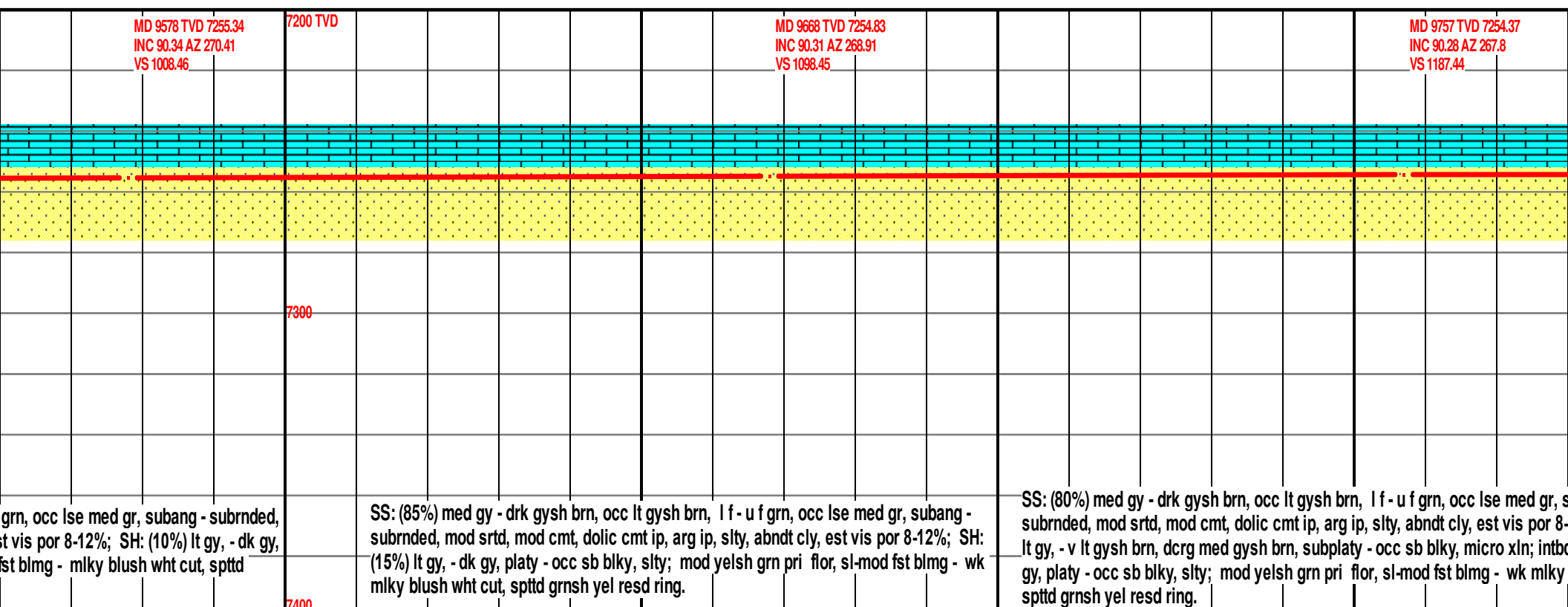
50





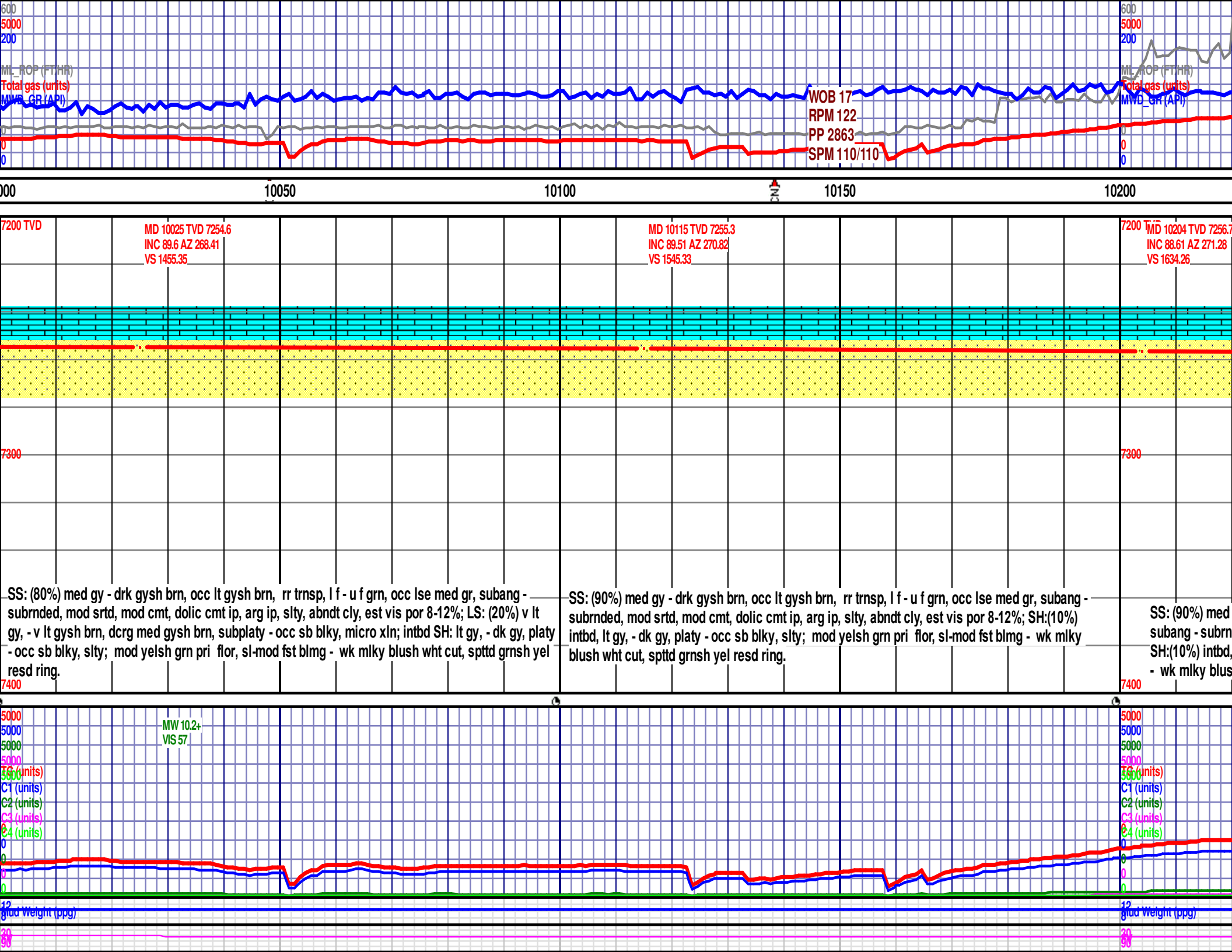












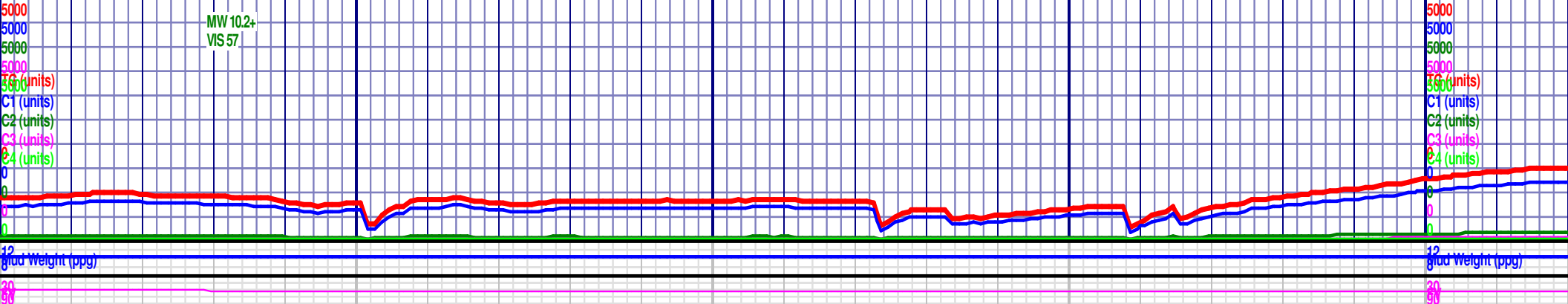
ML\_ROP (FT/HR)  
Total gas (units)  
MWB\_GR (API)

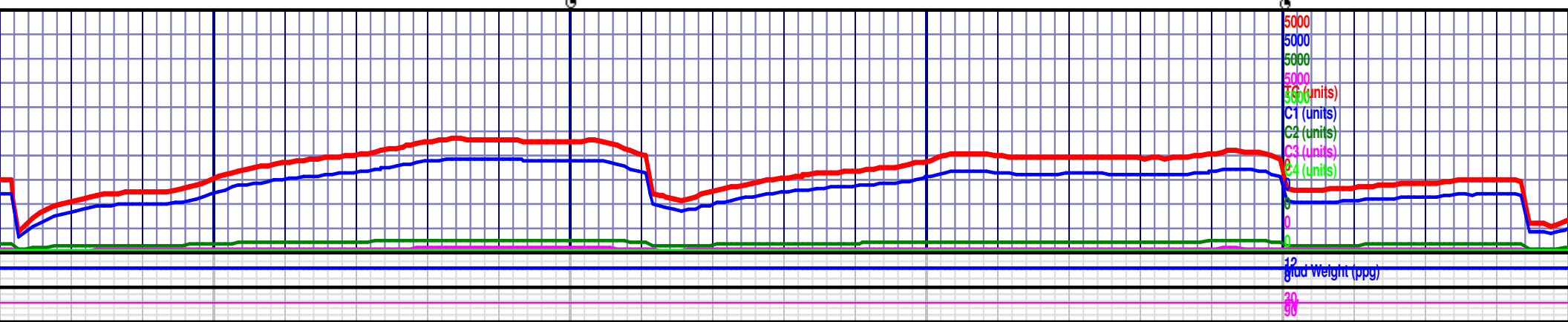
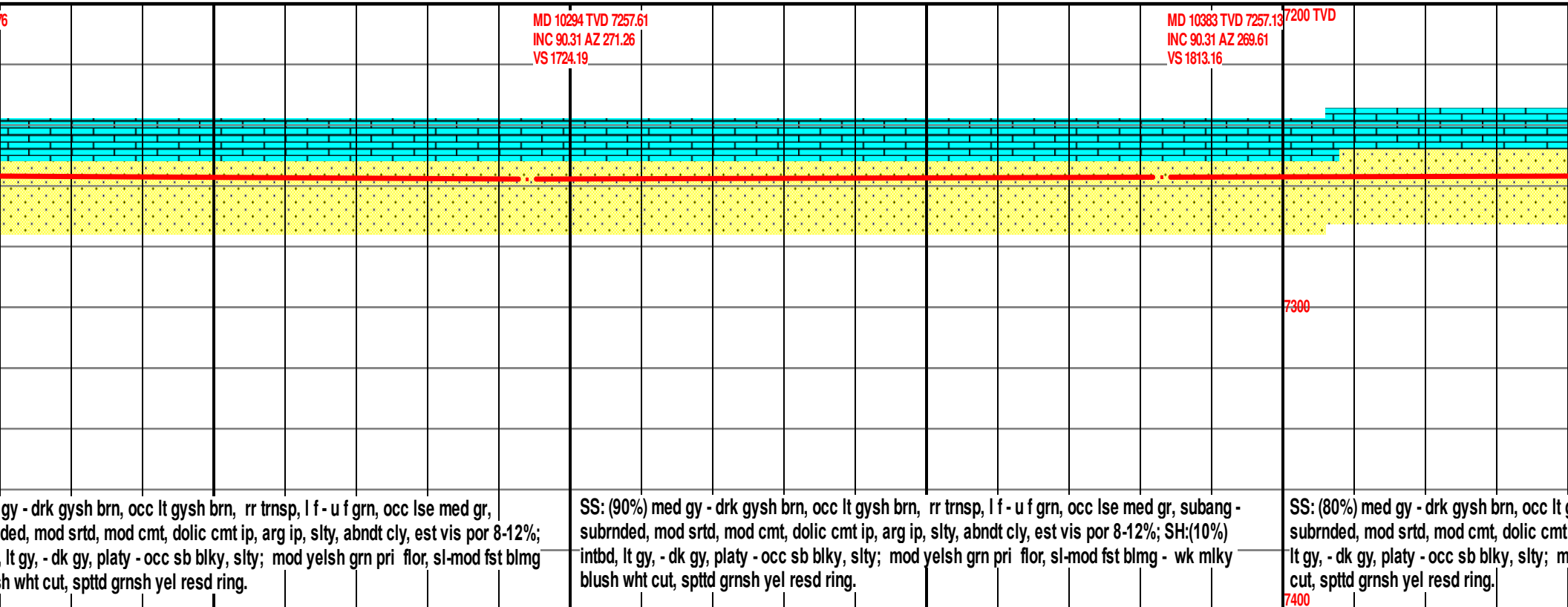
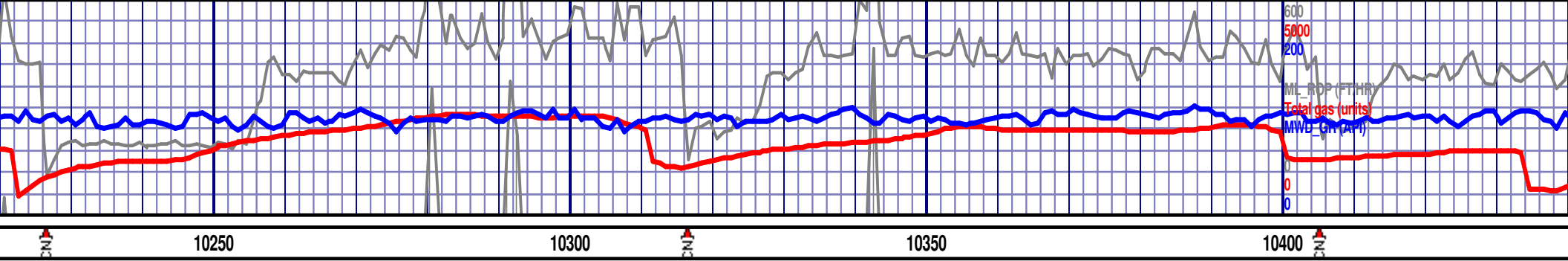
WOB 17  
RPM 122  
PP 2863  
SPM 110/110

ML\_ROP (FT/HR)  
Total gas (units)  
MWB\_GR (API)

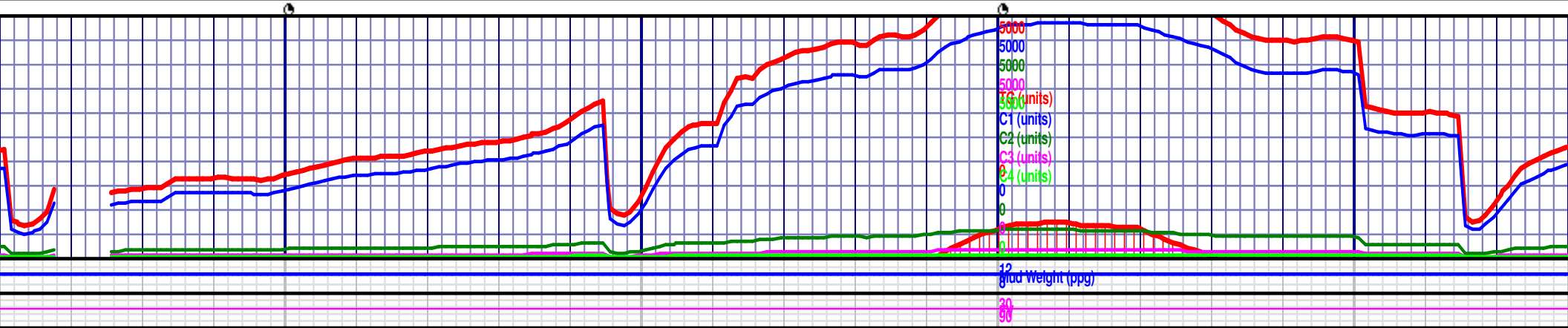
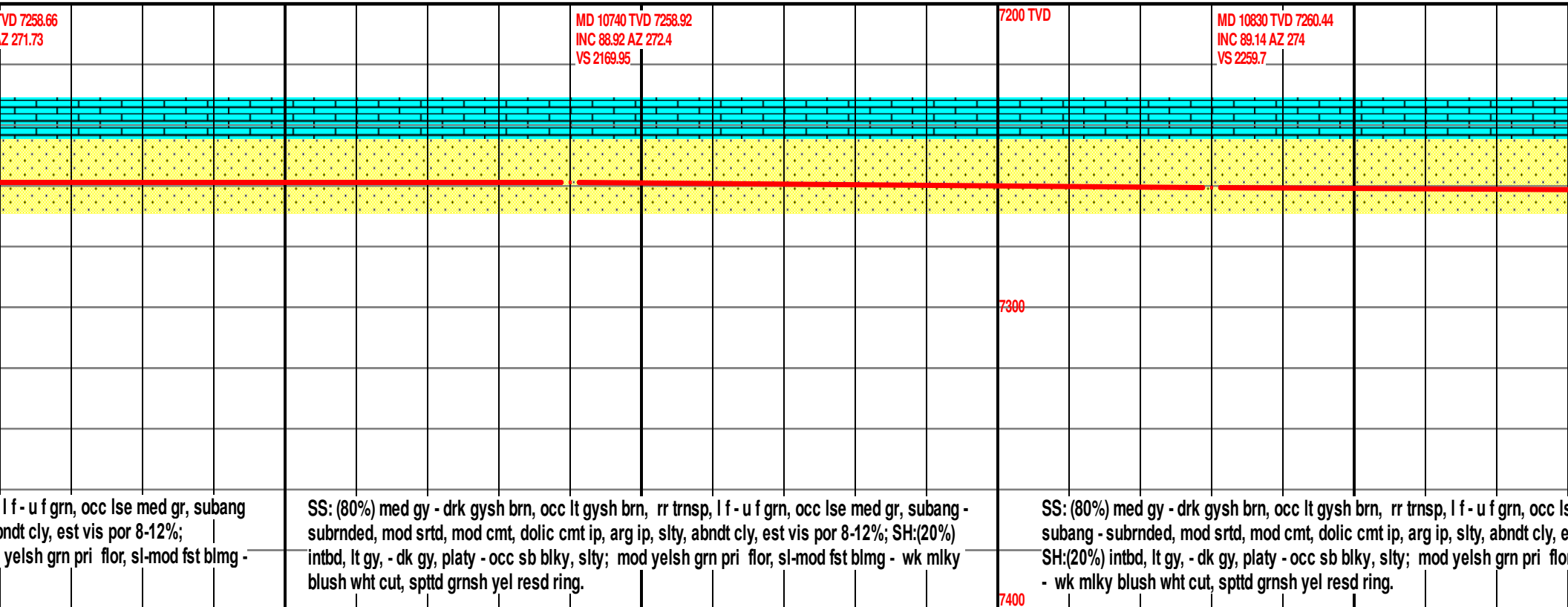
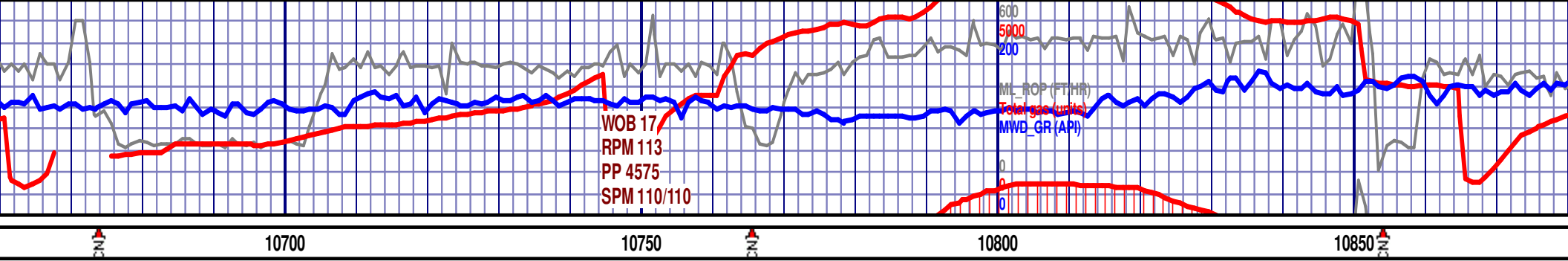
7200 TVD	MD 10025 TVD 7254.6 INC 89.6 AZ 268.41 VS 1455.35	MD 10115 TVD 7255.3 INC 89.51 AZ 270.82 VS 1545.33	7200 TVD MD 10204 TVD 7256.7 INC 88.61 AZ 271.28 VS 1634.26
----------	---	--	---

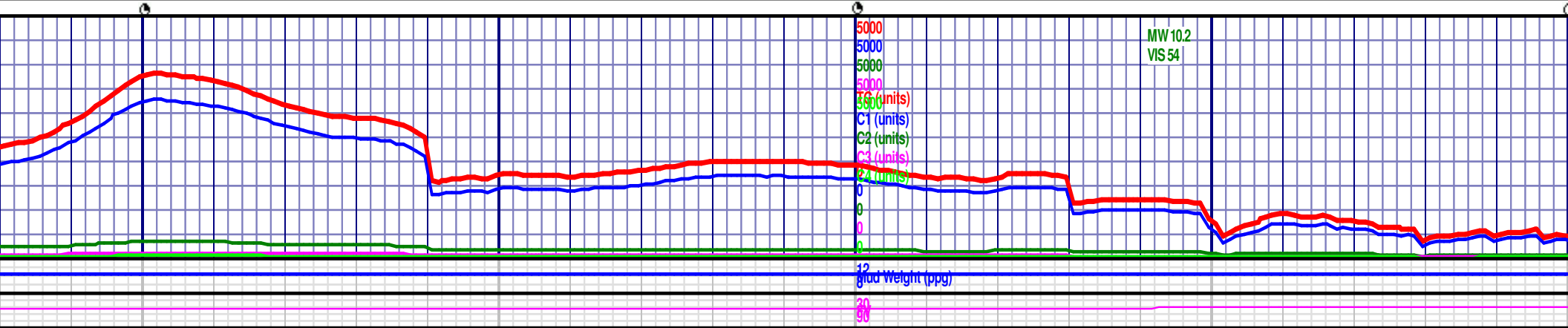
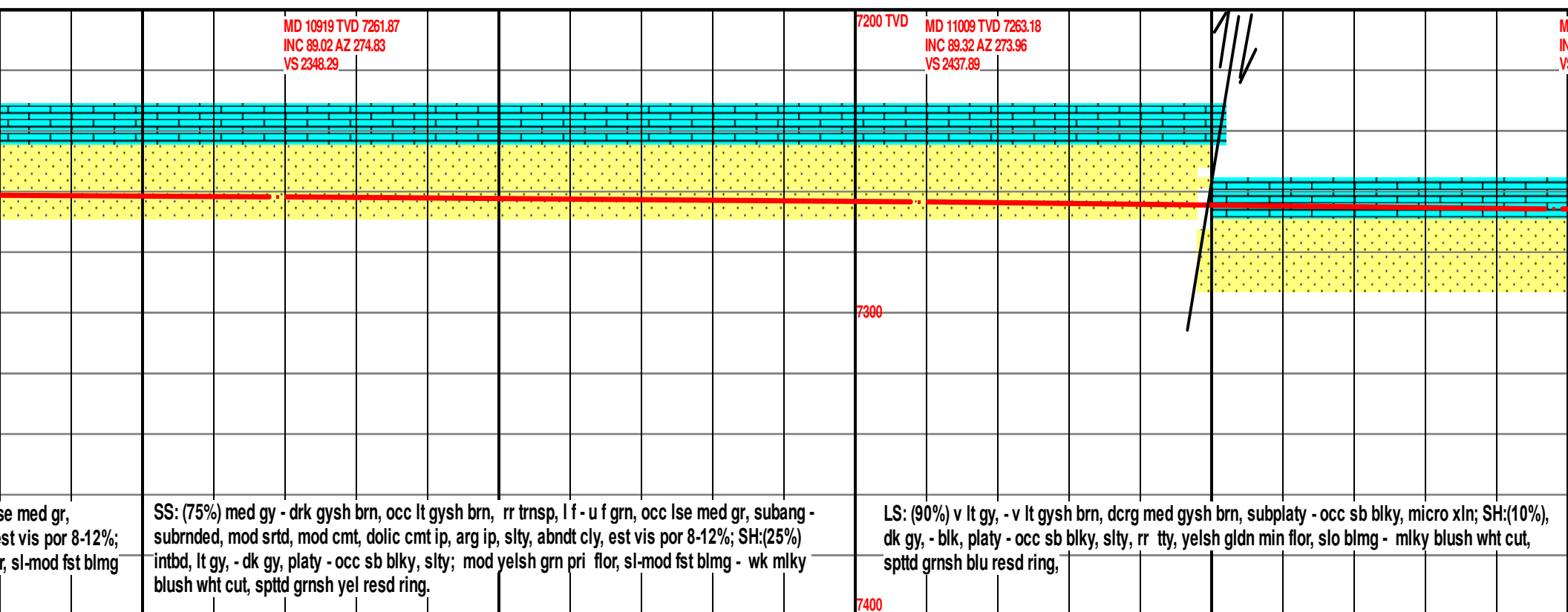
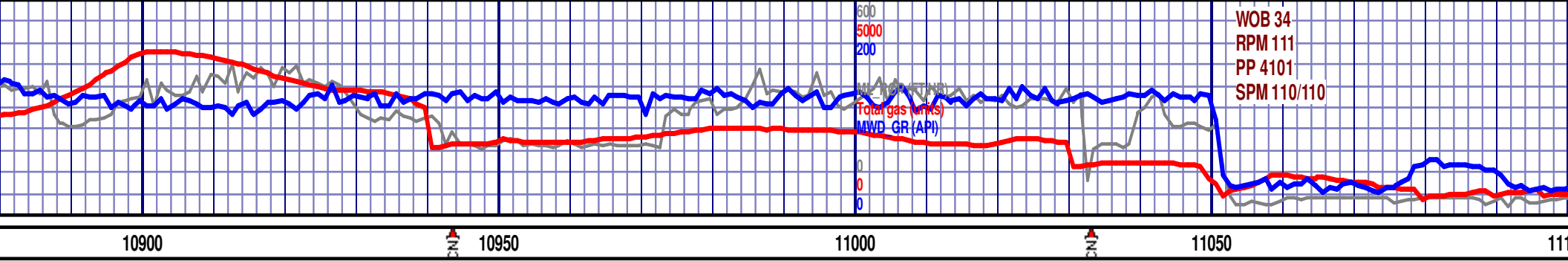
SS: (80%) med gy - drk gysh brn, occ lt gysh brn, rr trnsp, l f - u f grn, occ lse med gr, subang - subrndd, mod srtd, mod cmt, dolc cmt ip, arg ip, slty, abndt cly, est vis por 8-12%; LS: (20%) v lt gy, - v lt gysh brn, dcrg med gysh brn, subplaty - occ sb blk, micro xln; intbd SH: lt gy, - dk gy, platy - occ sb blk, slty; mod yelsh grn pri flor, sl-mod fst blmg - wk mlky blush wht cut, spttd grnsh yel resd ring.	SS: (90%) med gy - drk gysh brn, occ lt gysh brn, rr trnsp, l f - u f grn, occ lse med gr, subang - subrndd, mod srtd, mod cmt, dolc cmt ip, arg ip, slty, abndt cly, est vis por 8-12%; SH:(10%) intbd, lt gy, - dk gy, platy - occ sb blk, slty; mod yelsh grn pri flor, sl-mod fst blmg - wk mlky blush wht cut, spttd grnsh yel resd ring.	SS: (90%) med subang - subrn SH:(10%) intbd, - wk mlky blus
---	--	---

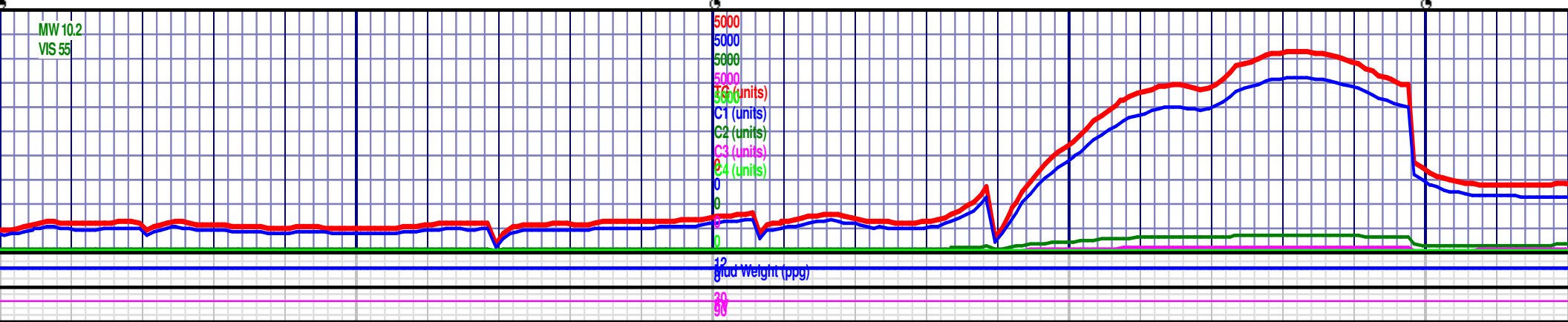
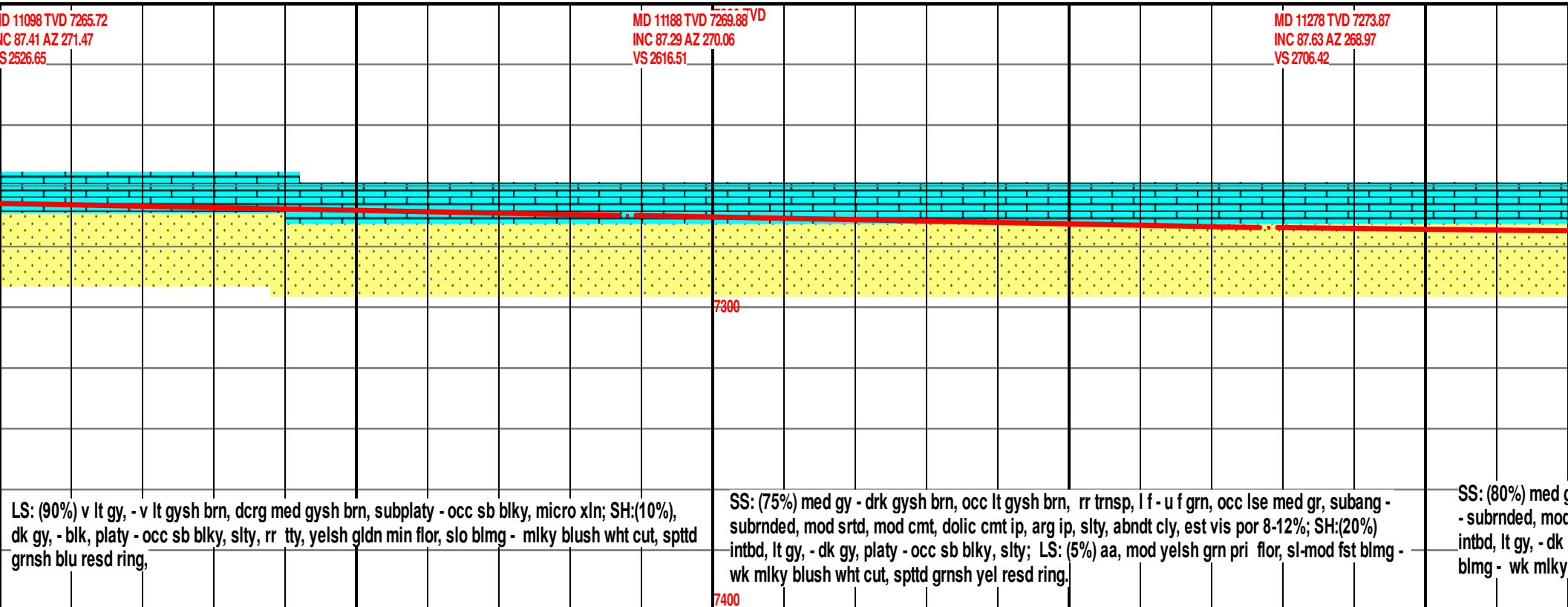
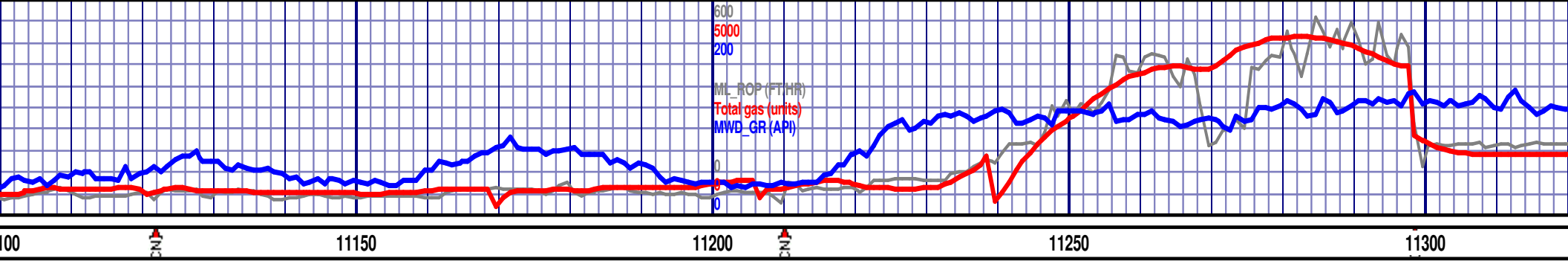


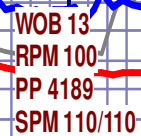












ML\_ROP (FT/HR)  
Total gas (units)  
MWD GR (API)

11350

11400

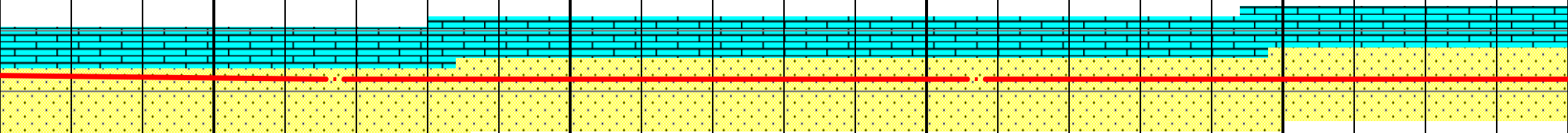
11450

11500

MD 11367 TVD 7275.73  
INC 89.97 AZ 269.47  
VS 2795.39

7200 TVD

MD 11457 TVD 7275.8  
INC 89.94 AZ 271.84  
VS 2885.35



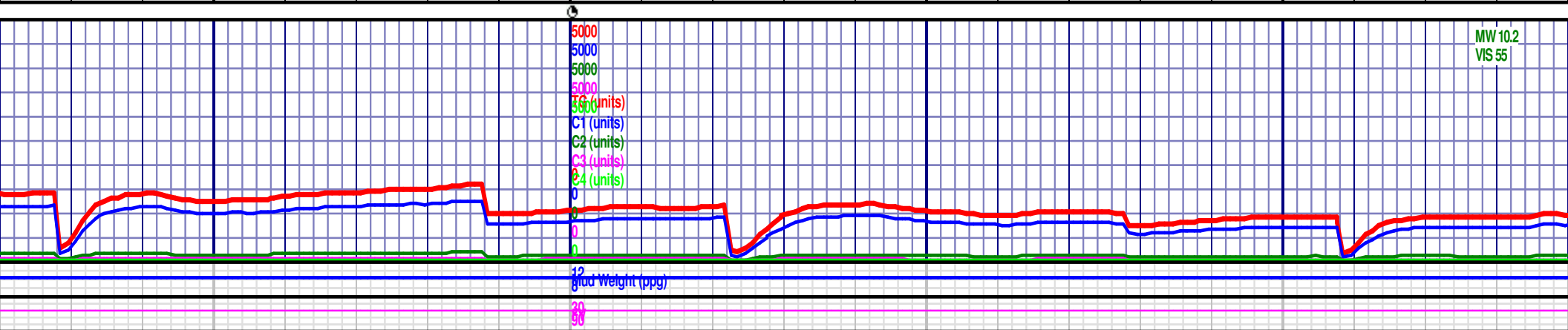
7300

gy - drk gysh brn, occ lt gysh brn, rr trnsp, l f - u f grn, occ lse med gr, subang  
srted, mod cmt, dolc cmt ip, arg ip, slty, abndt cly, est vis por 8-12%; SH:(15%)  
gy, platy - occ sb blk, slty; LS: (5%) aa, mod yelsh grn pri flor, sl-mod fst \_\_\_\_  
blush wht cut, spottd grnsh yel resd ring.

SS: (85%) med gy - drk gysh brn, occ lt gysh brn, rr trnsp, l f - u f grn, occ lse med gr, subang - subrnded, mod srted, mod cmt, dolc cmt ip, arg ip, slty, abndt cly, est vis por 8-12%; SH:(15%) intbd, lt gy, - dk gy, platy - occ sb blk, slty; mod yelsh grn pri flor, mod fst blmg strmg - mlky blush wht cut, occ blush grn strmg, spstd grnsh yel resd ring.

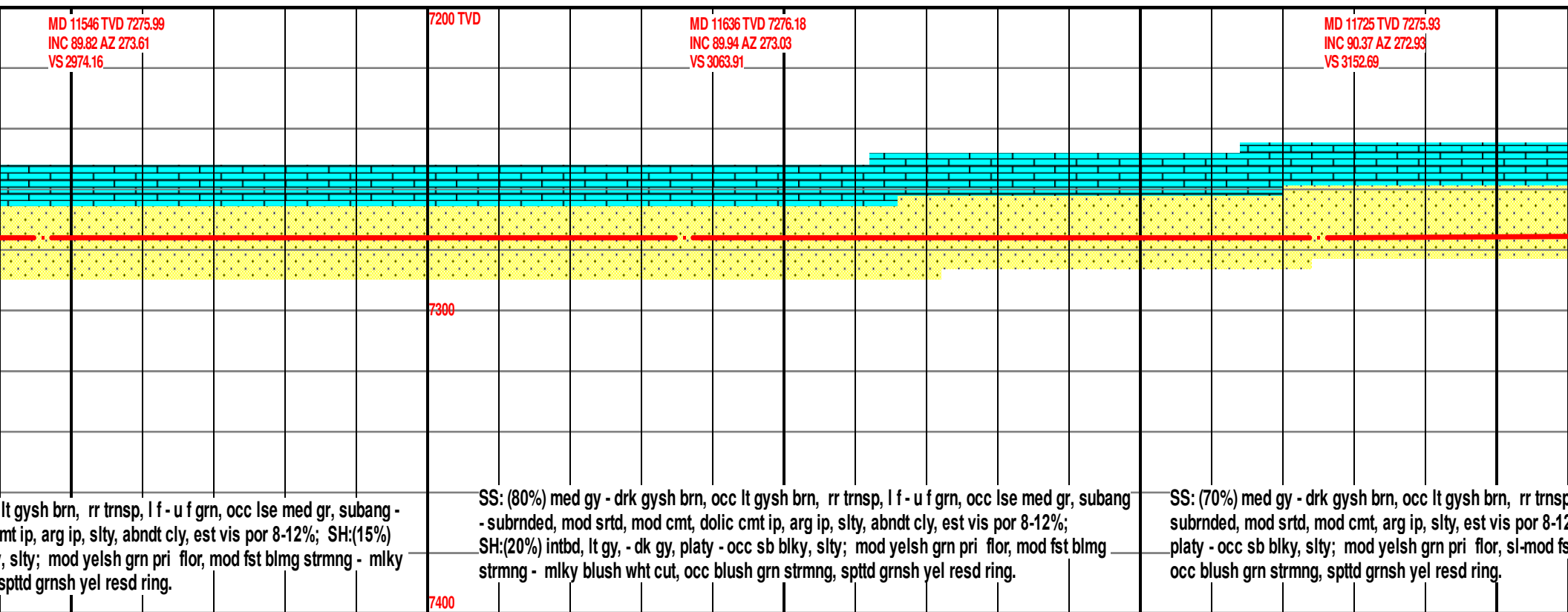
SS: (85%) med gy - drk gysh brn, occ  
subrnded, mod srtd, mod cmt, dolic c  
intbd, lt gy, - dk gy, platy - occ sb blyk  
blush wht cut, occ blush grn strrng, s

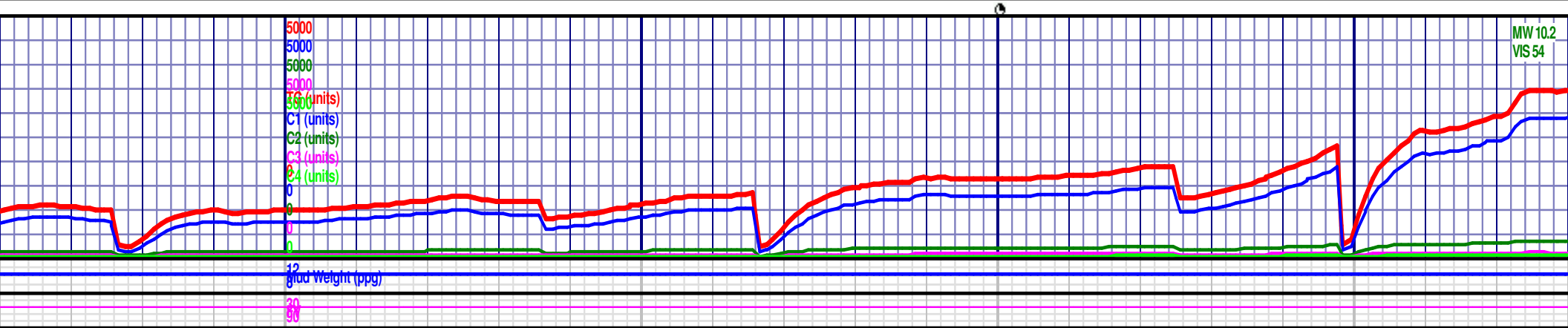
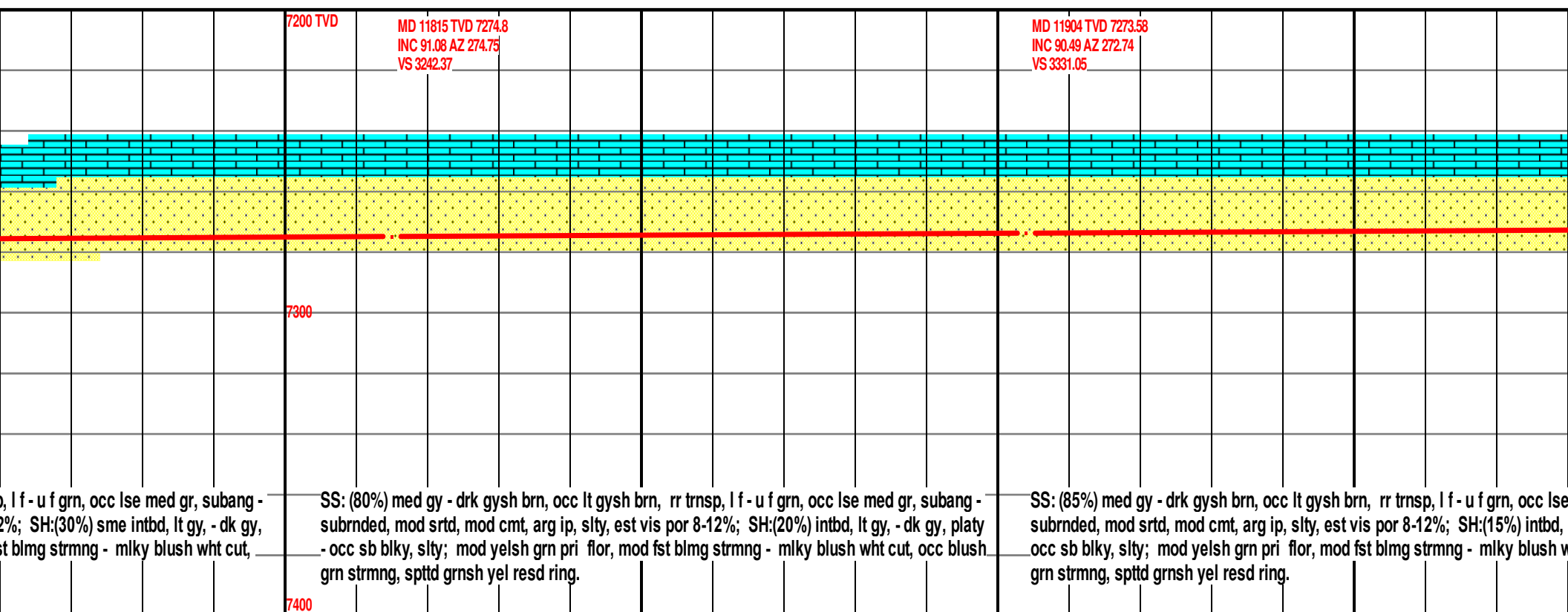
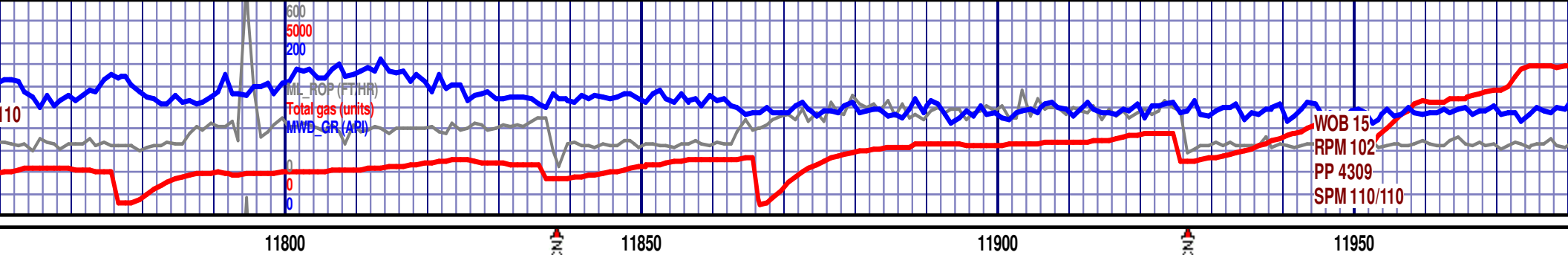
7400

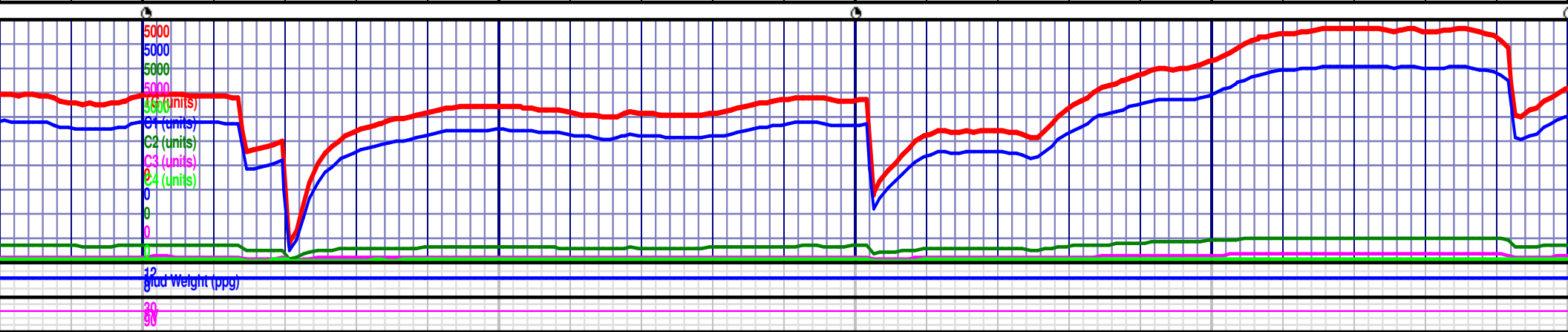
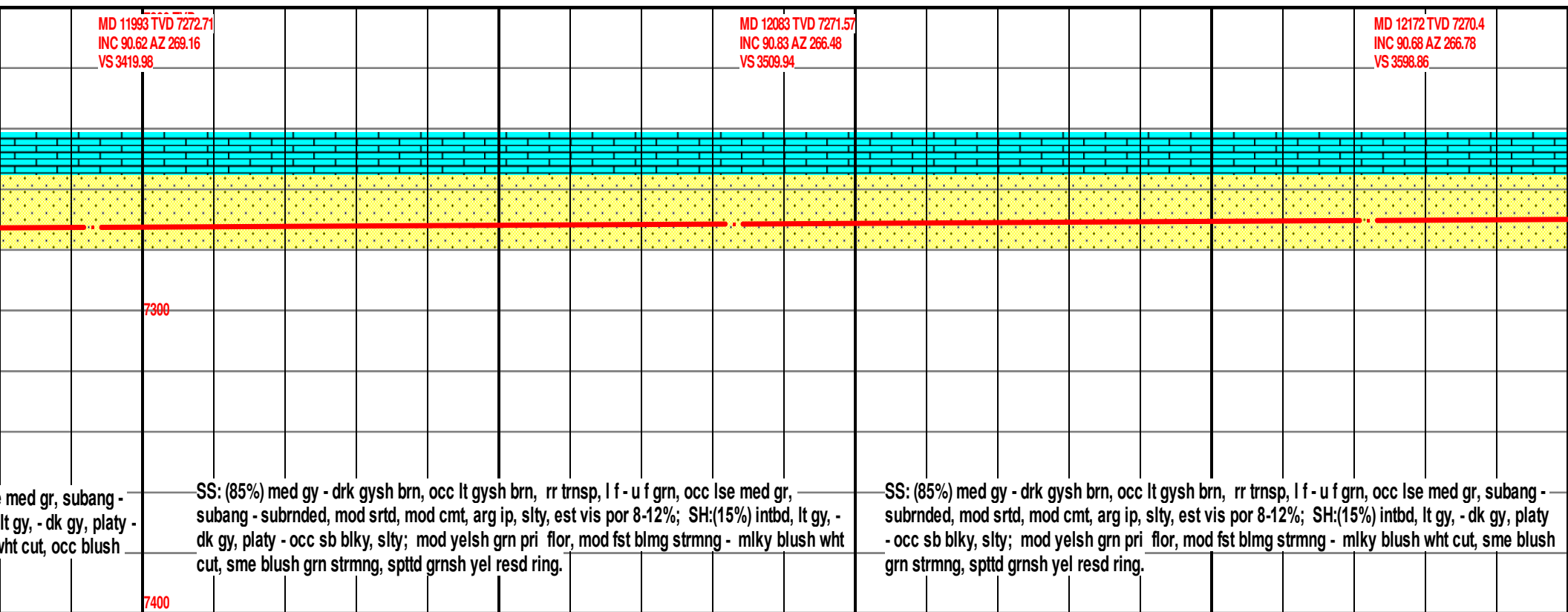


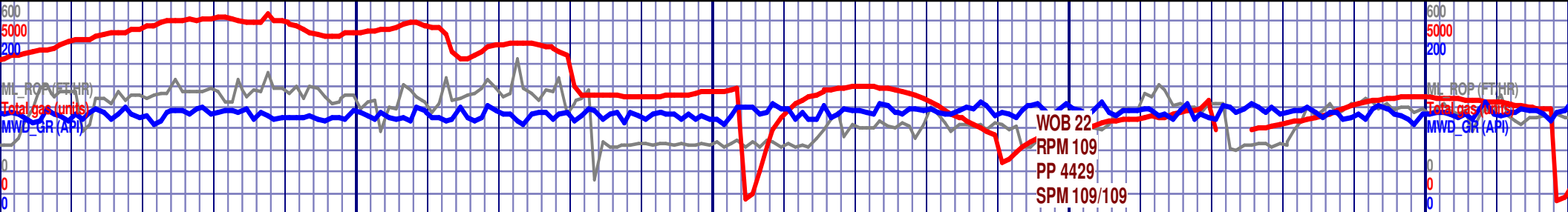
MW 10.2  
VIS 55



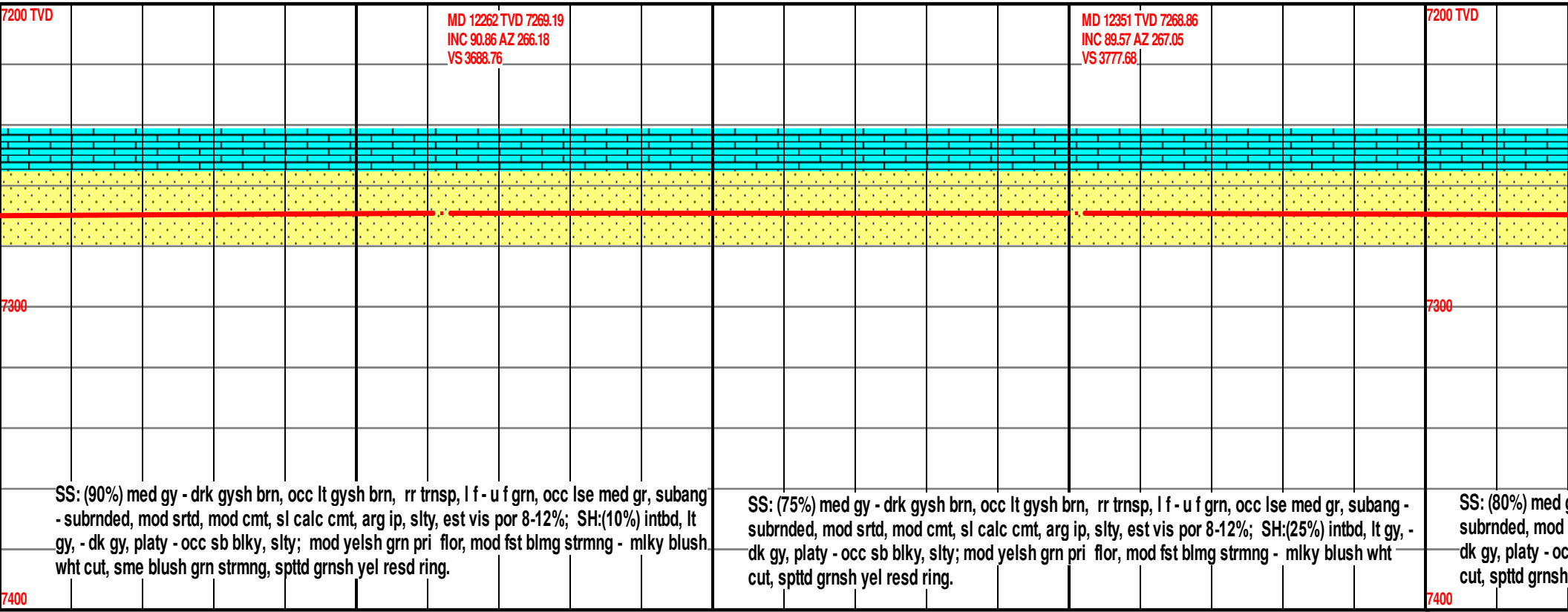








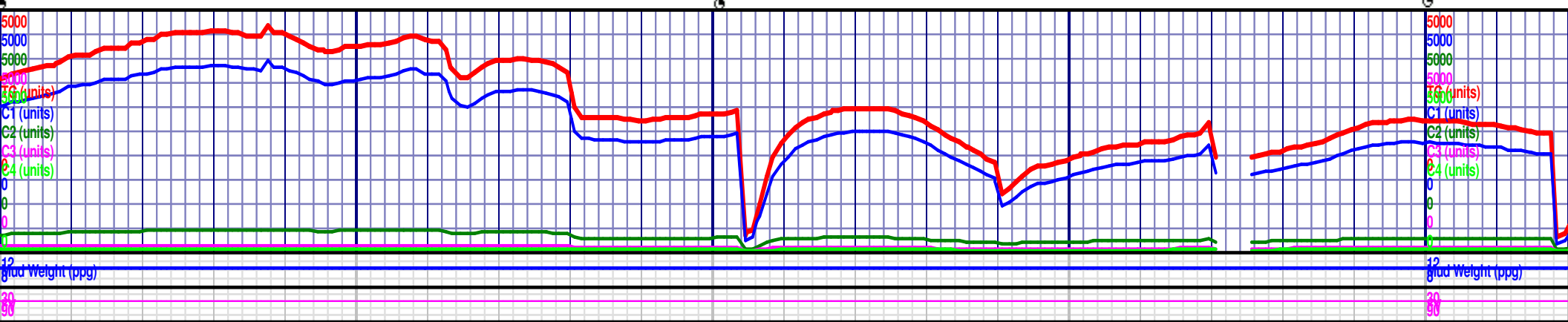
12250 12300 12350 12400

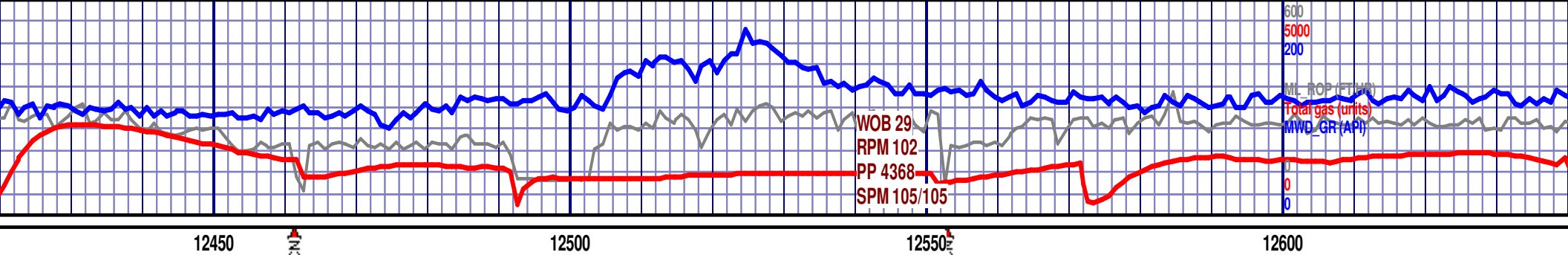


SS: (90%) med gy - drk gysh brn, occ lt gysh brn, rr trnsp, l f - u f grn, occ lse med gr, subang - subrnded, mod srtd, mod cmt, sl calc cmt, arg ip, slty, est vis por 8-12%; SH:(10%) intbd, lt gy, - dk gy, platy - occ sb blk, slty; mod yelsh grn pri flor, mod fst blmg strmg - milky blush wht cut, sme blush grn strmg, spttd grnsh yel resd ring.

SS: (75%) med gy - drk gysh brn, occ lt gysh brn, rr trnsp, l f - u f grn, occ lse med gr, subang - subrnded, mod srtd, mod cmt, sl calc cmt, arg ip, slty, est vis por 8-12%; SH:(25%) intbd, lt gy, - dk gy, platy - occ sb blk, slty; mod yelsh grn pri flor, mod fst blmg strmg - milky blush wht cut, spttd grnsh yel resd ring.

SS: (80%) med gy - drk gysh brn, occ lt gysh brn, rr trnsp, l f - u f grn, occ lse med gr, subang - subrnded, mod srtd, mod cmt, sl calc cmt, arg ip, slty, est vis por 8-12%; SH:(20%) intbd, lt gy, - dk gy, platy - occ sb blk, slty; mod yelsh grn pri flor, mod fst blmg strmg - milky blush wht cut, spttd grnsh yel resd ring.



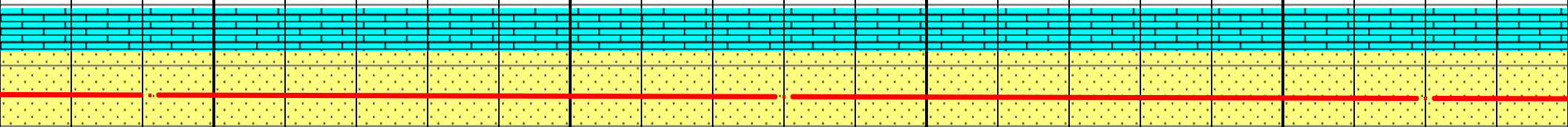


MD 12441 TVD 7269.8  
INC 89.23 AZ 267.42  
VS 3867.63

MD 12530 TVD 7270.54  
INC 89.82 AZ 267.29  
VS 3956.59

7200 TVD

MD 12620 TVD 7270.7  
INC 89.97 AZ 268.8  
VS 4046.58



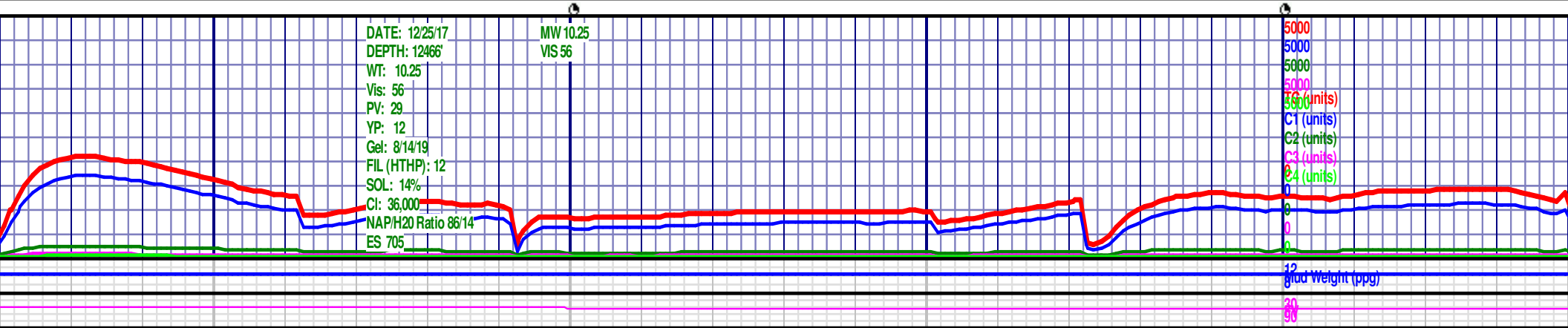
gy - drk gysh brn, occ lt gysh brn, rr trnsp, l f - u f grn, occ lse med gr, subang -  
srtd, mod cmt, sl calc cmt, arg ip, slty, est vis por 8-12%; SH:(20%) intbd, lt gy, -  
c sb blk, slty; mod yelsh grn pri flor, mod fst blmg strrng - mlky blush wht  
yel resd ring.

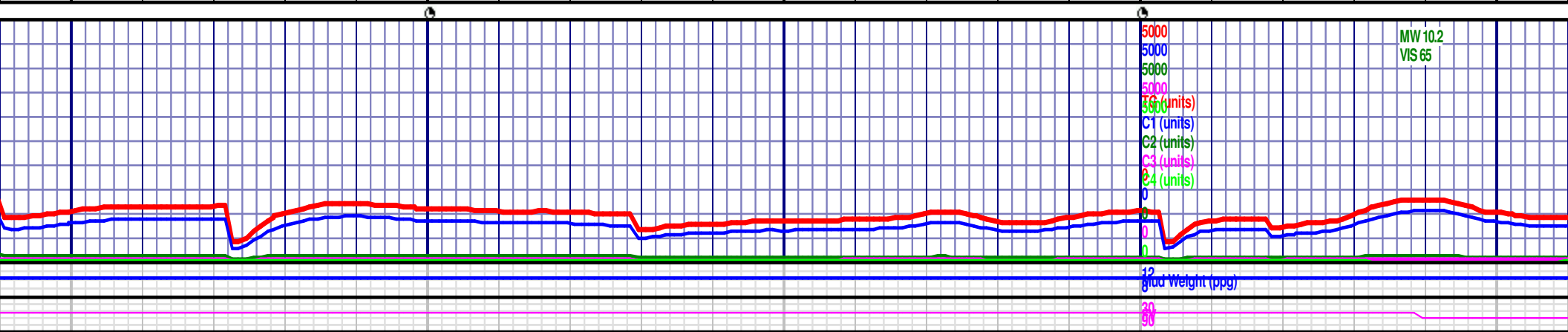
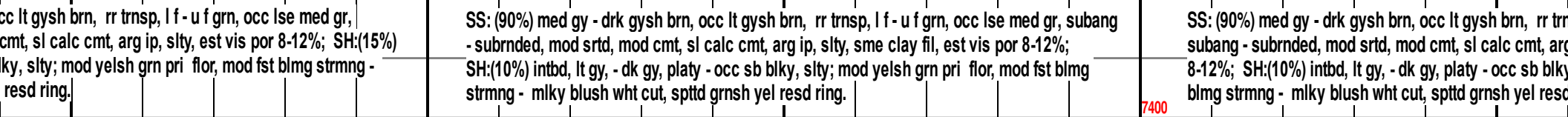
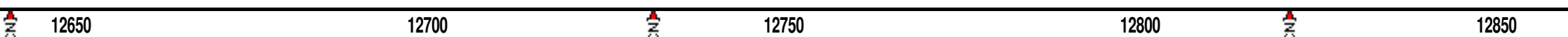
SS: (85%) med gy - drk gysh brn, occ lt gysh brn, rr trnsp, l f - u f grn, occ lse med gr, subang -  
subrtd, mod srtd, mod cmt, sl calc cmt, arg ip, slty, est vis por 8-12%; SH:(15%) intbd, lt gy, -  
dk gy, platy - occ sb blk, slty; mod yelsh grn pri flor, mod fst blmg strrng - mlky blush wht cut,  
spttd grnsh yel resd ring.

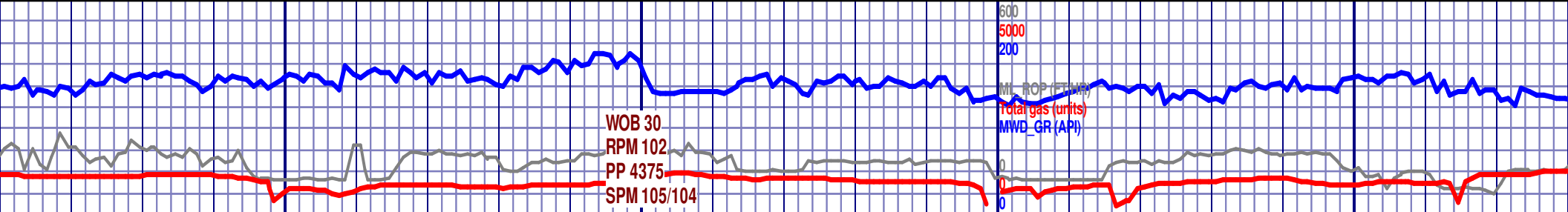
SS: (85%) med gy - drk gysh brn, occ lt gysh brn, rr trnsp, l f - u f grn, occ lse med gr, subang -  
subrtd, mod srtd, mod cmt, sl calc cmt, arg ip, slty, est vis por 8-12%; SH:(15%) intbd, lt gy, -  
dk gy, platy - occ sb blk, slty; mod yelsh grn pri flor, mod fst blmg strrng - mlky blush wht cut,  
spttd grnsh yel resd ring.

DATE: 12/25/17  
DEPTH: 12466'  
WT: 10.25  
Vis: 56  
PV: 29  
YP: 12  
Gel: 8/14/19  
FIL (HTHP): 12  
SOL: 14%  
Cl: 36,000  
NAP/H2O Ratio 86/14  
ES 705

MW 10.25  
VIS 56







12900

12950

13000

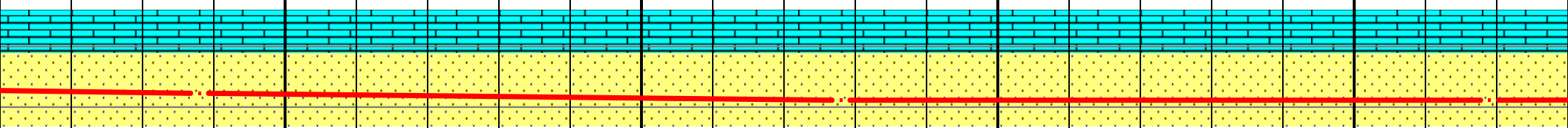
13050

MD 12888 TVD 7275.18  
INC 87.48 AZ 268.37  
VS 4314.41

MD 12978 TVD 7277.5  
INC 89.57 AZ 267.14  
VS 4404.35

7200 TVD

MD 13069 TVD  
INC 90.46 AZ  
VS 4495.32



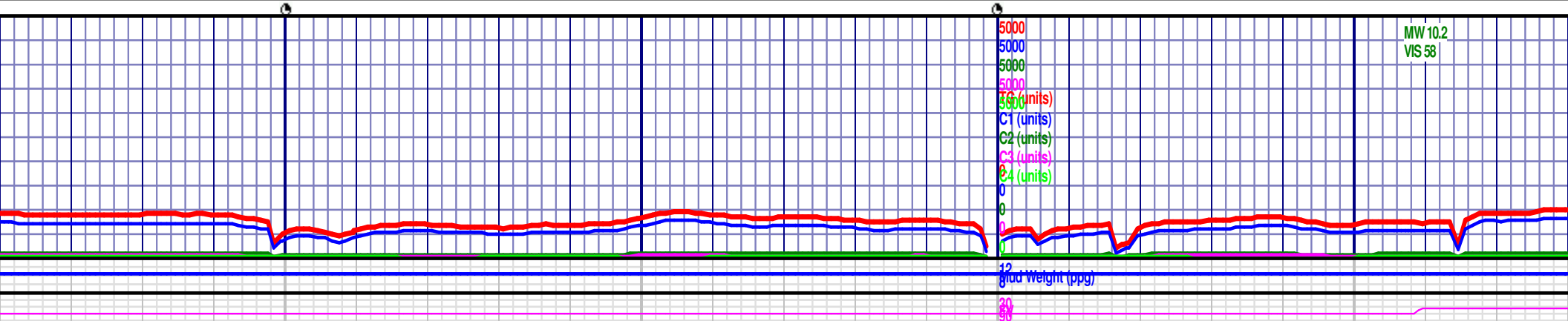
7300

isp, l f - u f grn, occ lse med gr,  
g ip, slty, sme clay fil, est vis por  
y, slty; mod yelsh grn pri flor, mod fst  
l ring.

SS: (90%) med gy - drk gysh brn, occ lt gysh brn, rr trnsp, l f - u f grn, occ lse med gr, subang -  
subrnded, mod srted, mod cmt, sl calc cmt, arg ip, slty, sme clay fil, est vis por 8-12%; SH:(10%)  
intbd, lt gy, - dk gy, platy - occ sb blkly, slty; mod yelsh grn pri flor, mod fst blmg strmg - mlky  
blush wht cut, spttd grnsh yel resd ring.

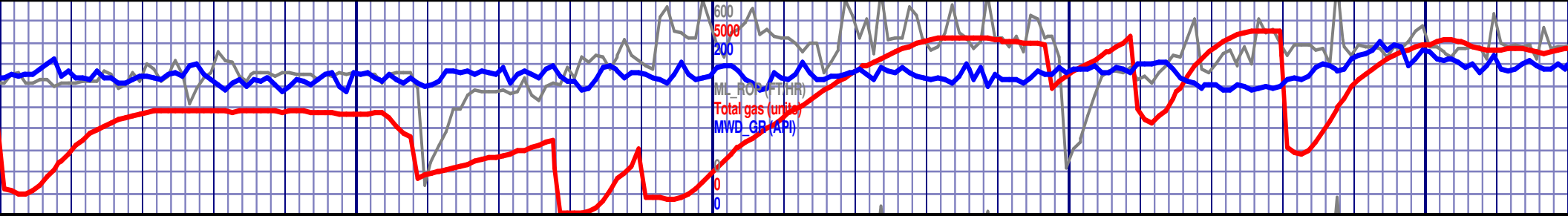
SS: (80%) med gy - drk gysh brn, occ lt gysh brn, rr trnsp, l f - u f grn, occ lse  
subrnded, mod srted, mod cmt, sl calc cmt, arg ip, slty, sme clay fil, est vis por  
intbd, lt gy, - dk gy, platy - occ sb blkly, slty; mod yelsh grn pri flor, mod fst blm  
blush wht cut, spttd grnsh yel resd ring.

7400









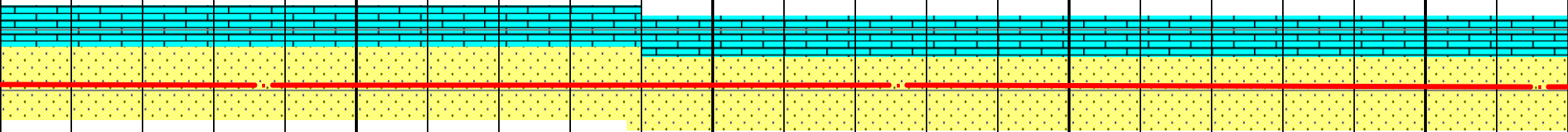
13300 13350 13400 13450 13500

MD 13337 TVD 7278.01  
INC 89.6 AZ 271.9  
VS 4763.23

7200 TVD

MD 13426 TVD 7278.44  
INC 89.85 AZ 272.66  
VS 4852.09

MD  
INC  
VS 4



7300

SS: (75%) med gy - drk gysh brn, occ lt gysh brn, rr trnsp, l f - u f grn, occ lse med gr, subang - subrnded, mod srtd, mod cmt, sl calc cmt, arg ip, slty, sme clay fil, est vis por 8-10%; SH:(25%) intbd, lt gy, - dk gy, platy - occ sb blk, slty; mod yelsh grn pri flor, mod fst blmg strmg - mlky blush wht cut, spttd grnsh yel resd ring.

SS: (75%) med gy - drk gysh brn, occ lt gysh brn, rr trnsp, l f - u f grn, occ lse med gr, subang - subrnded, mod srtd, mod cmt, sl calc cmt, arg ip, slty, sme clay fil, est vis por 8-10%; SH:(25%) intbd, lt gy, - dk gy, platy - occ sb blk, slty; mod yelsh grn pri flor, mod fst blmg strmg - mlky blush wht cut, spttd grnsh yel resd ring.

SS: (80%) med gy - subrnded, mod srtd intbd, lt gy, - dk gy, blush wht cut, spttd

7400

