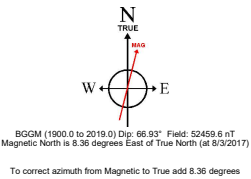
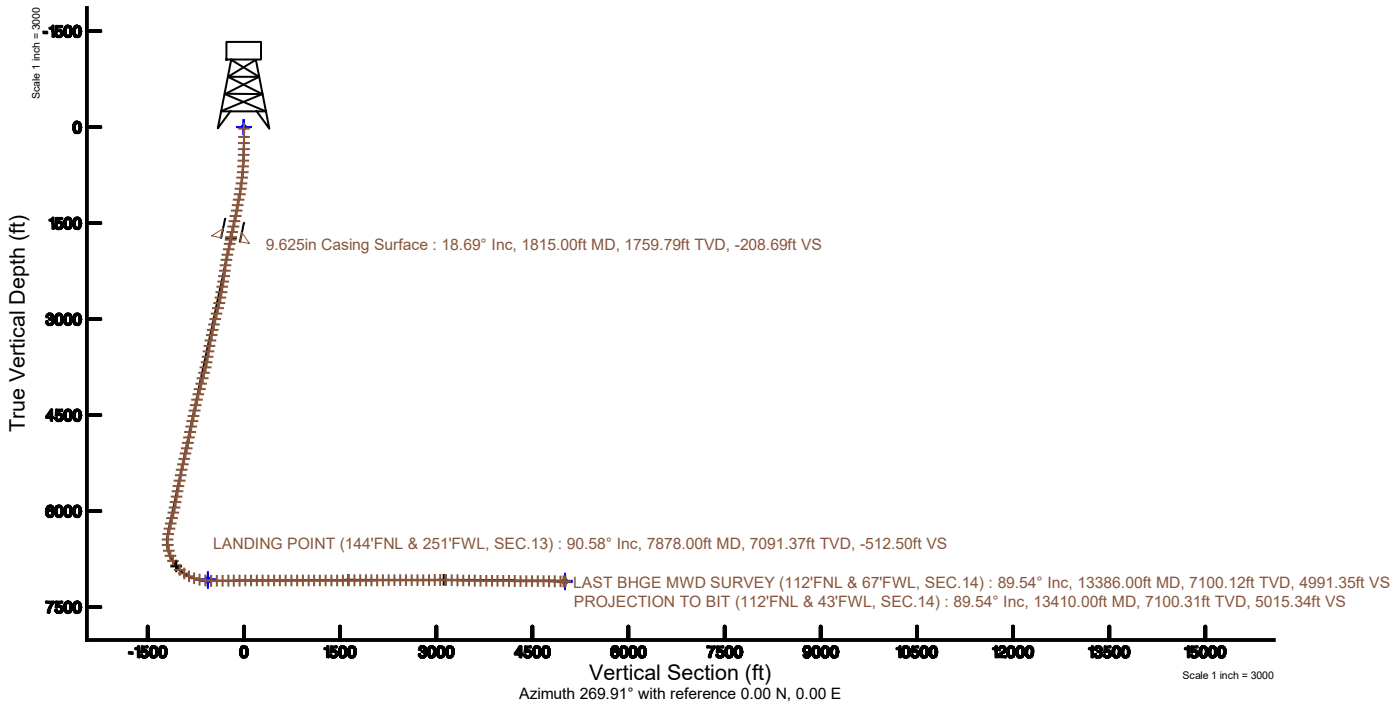
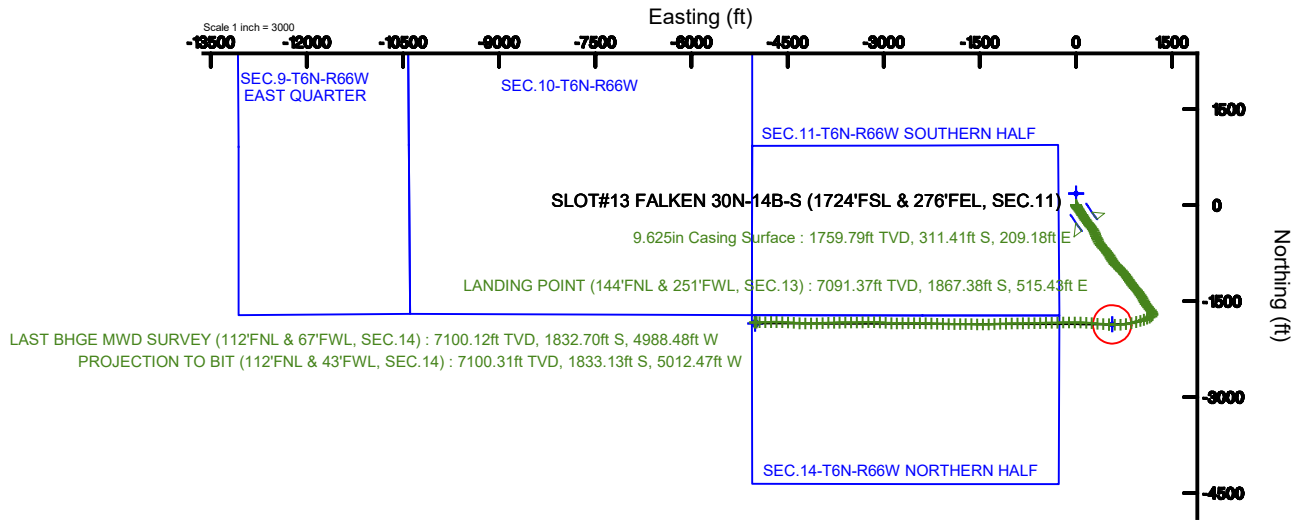


SRC ENERGY

Location: COLORADO Slot: SLOT#13 FALKEN 30N-14B-S (1724'FSL & 276'FEL, SEC.11)
Field: WELD COUNTY (NAD83,TRUE NORTH) Well: FALKEN 30N-14B-S
Facility: SEC.11-T06N-R66W Wellbore: FALKEN 30N-14B-S PWB

Plot reference wellpath is FALKEN 30N-14B-S PWP (REV-B.0)	Grid System: NAD83 / Lambert Colorado SP, Northern Zone (501), US feet
True vertical depths are referenced to PRECISION DRILLING 562 (25') (RKB)	* = Wellpath was transformed from a different geodetic datum
Measured depths are referenced to PRECISION DRILLING 562 (25') (RKB)	North Reference: True north
PRECISION DRILLING 562 (25') (RKB) to Mean Sea Level: 4835 feet	Scale: True distance
Mean Sea Level to Mud line (At Slot: SLOT#13 FALKEN 30N-14B-S (1724'FSL & 276'FEL, SEC.11)): 0 feet	Depths are in feet
Coordinates are in feet referenced to Slot	Created by: doddanna on 2018-02-07
	Database: WellArchitectDB





Actual Wellpath Report

FALKEN 30N-14B-S AWP

Page 1 of 9



REFERENCE WELLPATH IDENTIFICATION			
Operator	SRC ENERGY	Slot	SLOT#13 FALKEN 30N-14B-S (1724'FSL & 276'FEL, SEC.11)
Area	COLORADO	Well	FALKEN 30N-14B-S
Field	WELD COUNTY (NAD83,TRUE NORTH)	Wellbore	FALKEN 30N-14B-S AWB
Facility	SEC.11-T06N-R66W		

REPORT SETUP INFORMATION			
Projection System	NAD83 / Lambert Colorado SP, Northern Zone (501), US feet	Software System	WellArchitect® 5.0
North Reference	True	User	Doddanna
Scale	0.999966	Report Generated	2/7/2018 at 10:52:40 AM
Convergence at slot	0.49° East	Database/Source file	WellArchitectDB/FALKEN_30N-14B-S_AWP.xml

WELLPATH LOCATION						
	Local coordinates		Grid coordinates		Geographic coordinates	
	North[ft]	East[ft]	Easting[US ft]	Northing[US ft]	Latitude	Longitude
Slot Location	-179.97	-1.67	3212478.09	1426016.27	40°30'01.091"N	104°44'09.424"W
Facility Reference Pt			3212478.20	1426196.25	40°30'02.869"N	104°44'09.402"W
Field Reference Pt			3171284.48	1426358.81	40°30'07.643"N	104°53'02.634"W

WELLPATH DATUM			
Calculation method	Minimum curvature	PRECISION DRILLING 562 (25') (RKB) to Facility Vertical Datum	4835.00ft
Horizontal Reference Pt	Slot	PRECISION DRILLING 562 (25') (RKB) to Mean Sea Level	4835.00ft
Vertical Reference Pt	PRECISION DRILLING 562 (25') (RKB)	PRECISION DRILLING 562 (25') (RKB) to Mud Line at Slot (SLOT#13 FALKEN 30N-14B-S (1724'FSL & 276'FEL, SEC.11))	4835.00ft
MD Reference Pt	PRECISION DRILLING 562 (25') (RKB)	Section Origin	N 0.00, E 0.00 ft
Field Vertical Reference	Mean Sea Level	Section Azimuth	269.91°



SRC ENERGY

Actual Wellpath Report

FALKEN 30N-14B-S AWP

Page 2 of 9

**BAKER
HUGHES****REFERENCE WELLPATH IDENTIFICATION**

Operator	SRC ENERGY	Slot	SLOT#13 FALKEN 30N-14B-S (1724'FSL & 276'FEL, SEC.11)
Area	COLORADO	Well	FALKEN 30N-14B-S
Field	WELD COUNTY (NAD83,TRUE NORTH)	Wellbore	FALKEN 30N-14B-S AWB
Facility	SEC.11-T06N-R66W		

WELLPATH DATA (152 stations) † = interpolated/extrapolated station

MD [ft]	Inclination [°]	Azimuth [°]	TVD [ft]	Vert Sect [ft]	North [ft]	East [ft]	DLS [°/100ft]	Comments
0.00†	0.000	198.920	0.00	0.00	0.00	0.00	0.00	
25.00	0.000	198.920	25.00	0.00	0.00	0.00	0.00	
153.00	0.300	198.920	153.00	0.11	-0.32	-0.11	0.23	
247.00	1.260	165.590	246.99	-0.07	-1.55	0.07	1.09	
342.00	2.580	159.060	341.93	-1.09	-4.56	1.09	1.41	
436.00	4.790	152.580	435.73	-3.64	-10.02	3.66	2.39	
526.00	6.340	151.110	525.31	-7.76	-17.71	7.79	1.73	
614.00	7.490	153.920	612.67	-12.61	-27.11	12.66	1.36	
704.00	8.680	151.880	701.77	-18.38	-38.37	18.44	1.36	
793.00	10.980	144.390	789.46	-26.46	-51.19	26.54	2.95	
883.00	13.650	143.850	877.38	-37.69	-66.73	37.80	2.97	
972.00	15.740	144.300	963.47	-50.90	-85.02	51.04	2.35	
1061.00	17.870	145.740	1048.66	-65.60	-106.11	65.77	2.44	
1151.00	19.450	147.160	1133.93	-81.47	-130.11	81.67	1.83	
1240.00	19.750	148.120	1217.77	-97.40	-155.33	97.65	0.49	
1330.00	19.280	147.990	1302.60	-113.27	-180.84	113.56	0.52	
1419.00	19.640	143.630	1386.52	-129.89	-205.35	130.21	1.68	
1509.00	19.770	143.590	1471.25	-147.86	-229.78	148.22	0.15	
1598.00	19.530	144.530	1555.07	-165.38	-254.01	165.78	0.45	
1688.00	19.550	142.660	1639.89	-183.21	-278.23	183.65	0.70	
1773.00	19.230	142.340	1720.06	-200.35	-300.62	200.83	0.40	
1882.00	17.820	141.930	1823.41	-221.56	-327.96	222.08	1.30	
1971.00	19.770	140.230	1907.67	-239.56	-350.25	240.11	2.28	
2061.00	19.990	144.270	1992.31	-258.24	-374.44	258.83	1.55	
2150.00	19.500	151.490	2076.09	-274.18	-399.85	274.80	2.79	
2240.00	19.940	155.870	2160.81	-287.58	-427.06	288.25	1.71	
2329.00	19.900	159.160	2244.49	-299.13	-455.06	299.84	1.26	
2419.00	20.550	157.120	2328.94	-310.67	-483.93	311.43	1.07	
2509.00	20.470	156.600	2413.24	-323.02	-512.93	323.82	0.22	
2598.00	20.800	154.070	2496.53	-336.06	-541.42	336.92	1.07	



SRC ENERGY

Actual Wellpath Report

FALKEN 30N-14B-S AWP

Page 3 of 9

**BAKER
HUGHES****REFERENCE WELLPATH IDENTIFICATION**

Operator	SRC ENERGY	Slot	SLOT#13 FALKEN 30N-14B-S (1724'FSL & 276'FEL, SEC.11)
Area	COLORADO	Well	FALKEN 30N-14B-S
Field	WELD COUNTY (NAD83,TRUE NORTH)	Wellbore	FALKEN 30N-14B-S AWB
Facility	SEC.11-T06N-R66W		

WELLPATH DATA (152 stations)

MD [ft]	Inclination [°]	Azimuth [°]	TVD [ft]	Vert Sect [ft]	North [ft]	East [ft]	DLS [°/100ft]	Comments
2688.00	21.100	152.180	2580.58	-350.57	-570.12	351.46	0.82	
2777.00	20.870	145.740	2663.69	-366.93	-597.40	367.87	2.60	
2867.00	20.920	141.650	2747.77	-385.88	-623.25	386.86	1.62	
2956.00	21.120	142.200	2830.85	-405.53	-648.38	406.55	0.32	
3046.00	21.030	138.010	2914.83	-426.23	-673.19	427.29	1.68	
3136.00	19.830	136.360	2999.17	-447.54	-696.24	448.63	1.48	
3225.00	19.930	141.460	3082.88	-467.37	-719.04	468.50	1.95	
3315.00	19.940	143.270	3167.48	-486.07	-743.33	487.24	0.69	
3404.00	19.590	142.750	3251.24	-504.14	-767.37	505.34	0.44	
3493.00	19.610	148.090	3335.09	-521.03	-791.93	522.27	2.01	
3583.00	19.370	150.370	3419.93	-536.35	-817.72	537.63	0.89	
3672.00	19.640	150.790	3503.83	-550.90	-843.61	552.23	0.34	
3762.00	19.370	148.890	3588.66	-565.95	-869.59	567.32	0.77	
3851.00	19.720	146.590	3672.54	-581.81	-894.76	583.22	0.95	
3941.00	19.950	141.170	3757.20	-599.76	-919.40	601.20	2.06	
4031.00	20.220	131.870	3841.75	-620.94	-941.75	622.42	3.56	
4120.00	19.820	128.350	3925.38	-644.20	-961.37	645.71	1.43	
4210.00	19.950	132.770	4010.02	-667.40	-981.27	668.94	1.68	
4299.00	20.740	135.930	4093.47	-689.48	-1002.90	691.05	1.52	
4388.00	20.480	137.590	4176.77	-710.90	-1025.72	712.51	0.72	
4478.00	19.750	140.150	4261.28	-731.23	-1049.02	732.88	1.27	
4567.00	19.940	140.840	4345.00	-750.41	-1072.33	752.10	0.34	
4657.00	20.110	143.710	4429.56	-769.22	-1096.70	770.95	1.11	
4746.00	20.120	145.690	4513.13	-786.87	-1121.68	788.63	0.77	
4836.00	19.830	146.010	4597.72	-804.09	-1147.12	805.89	0.34	
4925.00	19.860	144.540	4681.43	-821.26	-1171.95	823.10	0.56	
5015.00	19.610	144.490	4766.14	-838.86	-1196.70	840.74	0.28	
5104.00	19.840	144.310	4849.92	-856.31	-1221.12	858.23	0.27	
5194.00	19.750	143.790	4934.60	-874.16	-1245.80	876.12	0.22	
5283.00	19.870	141.470	5018.34	-892.43	-1269.76	894.42	0.89	



SRC ENERGY

Actual Wellpath Report

FALKEN 30N-14B-S AWP

Page 4 of 9

**BAKER
HUGHES****REFERENCE WELLPATH IDENTIFICATION**

Operator	SRC ENERGY	Slot	SLOT#13 FALKEN 30N-14B-S (1724'FSL & 276'FEL, SEC.11)
Area	COLORADO	Well	FALKEN 30N-14B-S
Field	WELD COUNTY (NAD83,TRUE NORTH)	Wellbore	FALKEN 30N-14B-S AWB
Facility	SEC.11-T06N-R66W		

WELLPATH DATA (152 stations)

MD [ft]	Inclination [°]	Azimuth [°]	TVD [ft]	Vert Sect [ft]	North [ft]	East [ft]	DLS [°/100ft]	Comments
5373.00	19.880	137.170	5102.98	-912.32	-1292.95	914.36	1.62	
5462.00	19.750	135.250	5186.71	-933.16	-1314.73	935.23	0.75	
5552.00	19.390	140.100	5271.52	-953.42	-1336.99	955.52	1.85	
5641.00	19.360	145.030	5355.49	-971.31	-1360.41	973.45	1.84	
5731.00	19.580	147.240	5440.34	-987.99	-1385.32	990.16	0.85	
5820.00	19.020	146.940	5524.34	-1003.93	-1410.02	1006.14	0.64	
5910.00	20.260	146.280	5609.10	-1020.54	-1435.27	1022.80	1.40	
5999.00	19.330	151.750	5692.85	-1036.03	-1461.06	1038.32	2.33	
6089.00	20.270	151.420	5777.53	-1050.49	-1487.88	1052.83	1.05	
6178.00	20.640	150.310	5860.91	-1065.60	-1515.04	1067.98	0.60	
6268.00	21.070	147.530	5945.02	-1082.10	-1542.47	1084.52	1.20	
6357.00	21.440	143.750	6027.97	-1100.26	-1569.09	1102.73	1.59	
6446.00	21.630	141.220	6110.76	-1120.11	-1594.99	1122.62	1.07	
6536.00	21.690	139.110	6194.41	-1141.35	-1620.50	1143.90	0.87	
6626.00	21.080	137.610	6278.21	-1163.11	-1645.02	1165.70	0.91	
6715.00	19.530	144.020	6361.69	-1182.61	-1668.89	1185.23	3.04	
6804.00	16.420	174.480	6446.52	-1192.54	-1693.51	1195.20	10.98	
6894.00	15.600	202.630	6533.16	-1189.07	-1717.37	1191.77	8.59	
6984.00	19.490	228.150	6619.08	-1173.16	-1738.60	1175.90	9.48	
7073.00	25.260	243.330	6701.41	-1145.06	-1757.06	1147.82	9.13	
7162.00	32.640	247.010	6779.24	-1105.91	-1774.98	1108.70	8.53	
7252.00	37.270	251.380	6853.00	-1057.68	-1793.18	1060.50	5.85	
7342.00	46.000	254.360	6920.21	-1000.54	-1810.64	1003.39	9.94	
7431.00	54.840	257.000	6976.86	-934.10	-1827.49	936.97	10.19	
7520.00	65.130	257.880	7021.32	-858.95	-1844.19	861.85	11.59	
7610.00	73.610	261.200	7053.01	-776.18	-1859.40	779.10	10.03	
7699.00	79.040	266.580	7074.06	-690.24	-1868.55	693.17	8.47	
7789.00	84.110	270.630	7087.25	-601.28	-1870.70	604.22	7.18	
7878.00	90.580	273.650	7091.37	-512.50	-1867.38	515.43	8.02	LANDING POINT (144'FNL & 251'FWL, SEC.13)
7968.00	90.310	273.730	7090.67	-422.70	-1861.58	425.62	0.31	



SRC ENERGY

Actual Wellpath Report

FALKEN 30N-14B-S AWP

Page 5 of 9

**BAKER
HUGHES****REFERENCE WELLPATH IDENTIFICATION**

Operator	SRC ENERGY	Slot	SLOT#13 FALKEN 30N-14B-S (1724'FSL & 276'FEL, SEC.11)
Area	COLORADO	Well	FALKEN 30N-14B-S
Field	WELD COUNTY (NAD83,TRUE NORTH)	Wellbore	FALKEN 30N-14B-S AWB
Facility	SEC.11-T06N-R66W		

WELLPATH DATA (152 stations)

MD [ft]	Inclination [°]	Azimuth [°]	TVD [ft]	Vert Sect [ft]	North [ft]	East [ft]	DLS [°/100ft]	Comments
8057.00	90.400	275.130	7090.12	-333.98	-1854.71	336.89	1.58	
8147.00	90.430	275.200	7089.47	-244.36	-1846.61	247.26	0.08	
8236.00	90.220	273.820	7088.96	-155.65	-1839.61	158.54	1.57	
8326.00	90.280	271.990	7088.57	-65.78	-1835.05	68.66	2.03	
8415.00	90.310	270.250	7088.11	23.20	-1833.31	-20.32	1.96	
8505.00	90.310	268.900	7087.62	113.19	-1833.98	-110.31	1.50	
8594.00	90.030	268.630	7087.36	202.17	-1835.89	-199.29	0.44	
8684.00	90.180	269.040	7087.19	292.16	-1837.72	-289.27	0.49	
8773.00	90.180	268.840	7086.91	381.14	-1839.37	-378.26	0.22	
8863.00	90.400	268.460	7086.46	471.12	-1841.49	-468.23	0.49	
8952.00	90.370	268.470	7085.86	560.09	-1843.87	-557.20	0.04	
9042.00	90.400	269.190	7085.26	650.07	-1845.71	-647.17	0.80	
9131.00	90.460	269.410	7084.59	739.07	-1846.80	-736.17	0.26	
9221.00	89.570	269.060	7084.56	829.06	-1848.00	-826.16	1.06	
9310.00	89.600	269.070	7085.21	918.05	-1849.45	-915.14	0.04	
9400.00	89.690	269.200	7085.77	1008.04	-1850.81	-1005.13	0.18	
9489.00	89.780	267.820	7086.18	1097.01	-1853.13	-1094.10	1.55	
9579.00	90.150	268.030	7086.23	1186.95	-1856.39	-1184.04	0.47	
9668.00	90.000	266.880	7086.12	1275.87	-1860.34	-1272.95	1.30	
9757.00	90.430	268.460	7085.78	1364.80	-1863.96	-1361.87	1.84	
9847.00	90.400	270.070	7085.13	1454.79	-1865.11	-1451.86	1.79	
9936.00	90.340	272.000	7084.56	1543.76	-1863.50	-1540.84	2.17	
10026.00	90.180	270.740	7084.15	1633.73	-1861.35	-1630.81	1.41	
10115.00	89.880	269.870	7084.10	1722.73	-1860.88	-1719.81	1.03	
10204.00	89.910	270.340	7084.26	1811.73	-1860.71	-1808.81	0.53	
10294.00	90.120	270.750	7084.24	1901.72	-1859.86	-1898.80	0.51	
10383.00	90.150	270.750	7084.03	1990.71	-1858.69	-1987.79	0.03	
10473.00	90.250	271.140	7083.72	2080.70	-1857.21	-2077.78	0.45	
10562.00	90.280	272.060	7083.30	2169.66	-1854.72	-2166.74	1.03	
10652.00	90.220	272.800	7082.91	2259.57	-1850.91	-2256.66	0.82	



SRC ENERGY

Actual Wellpath Report

FALKEN 30N-14B-S AWP

Page 6 of 9

**BAKER
HUGHES****REFERENCE WELLPATH IDENTIFICATION**

Operator	SRC ENERGY	Slot	SLOT#13 FALKEN 30N-14B-S (1724'FSL & 276'FEL, SEC.11)
Area	COLORADO	Well	FALKEN 30N-14B-S
Field	WELD COUNTY (NAD83,TRUE NORTH)	Wellbore	FALKEN 30N-14B-S AWB
Facility	SEC.11-T06N-R66W		

WELLPATH DATA (152 stations)

MD [ft]	Inclination [°]	Azimuth [°]	TVD [ft]	Vert Sect [ft]	North [ft]	East [ft]	DLS [°/100ft]	Comments
10741.00	90.280	272.290	7082.52	2348.47	-1846.96	-2345.57	0.58	
10831.00	90.400	271.160	7081.99	2438.42	-1844.25	-2435.53	1.26	
10920.00	90.310	270.010	7081.44	2527.41	-1843.34	-2524.52	1.30	
11010.00	90.250	268.420	7081.00	2617.40	-1844.57	-2614.51	1.77	
11099.00	90.250	268.560	7080.61	2706.38	-1846.92	-2703.48	0.16	
11189.00	90.280	269.190	7080.19	2796.36	-1848.68	-2793.46	0.70	
11278.00	90.310	272.670	7079.74	2885.33	-1847.24	-2882.43	3.91	
11368.00	90.280	275.550	7079.27	2975.08	-1840.79	-2972.19	3.20	
11457.00	90.310	274.350	7078.81	3063.73	-1833.11	-3060.86	1.35	
11547.00	88.770	270.900	7079.54	3153.61	-1828.99	-3150.74	4.20	
11636.00	88.770	268.370	7081.45	3242.58	-1829.56	-3239.71	2.84	
11726.00	88.800	268.550	7083.36	3332.53	-1831.97	-3329.66	0.20	
11815.00	88.680	268.540	7085.31	3421.49	-1834.23	-3418.61	0.14	
11905.00	88.680	269.020	7087.39	3511.44	-1836.15	-3508.56	0.53	
11994.00	89.540	270.160	7088.77	3600.43	-1836.79	-3597.55	1.60	
12084.00	89.420	269.720	7089.59	3690.43	-1836.88	-3687.55	0.51	
12173.00	89.570	268.740	7090.37	3779.42	-1838.08	-3776.53	1.11	
12263.00	89.540	267.780	7091.07	3869.37	-1840.81	-3866.49	1.07	
12352.00	89.320	266.530	7091.95	3958.26	-1845.23	-3955.37	1.43	
12441.00	89.570	268.100	7092.82	4047.17	-1849.39	-4044.27	1.79	
12531.00	89.600	269.450	7093.47	4137.14	-1851.32	-4134.24	1.50	
12620.00	89.480	271.320	7094.18	4226.13	-1850.72	-4223.23	2.11	
12710.00	89.540	273.270	7094.95	4316.05	-1847.12	-4313.15	2.17	
12799.00	89.630	274.120	7095.60	4404.85	-1841.38	-4401.96	0.96	
12889.00	89.660	273.890	7096.15	4494.62	-1835.10	-4491.74	0.26	
12978.00	89.480	272.660	7096.82	4583.46	-1830.01	-4580.59	1.40	
13068.00	89.630	270.800	7097.52	4673.41	-1827.29	-4670.55	2.07	
13157.00	89.420	268.300	7098.26	4762.40	-1827.99	-4759.53	2.82	
13246.00	89.540	268.910	7099.07	4851.37	-1830.16	-4848.50	0.70	
13336.00	89.600	268.990	7099.74	4941.36	-1831.81	-4938.48	0.11	



SRC ENERGY

Actual Wellpath Report

FALKEN 30N-14B-S AWP

Page 7 of 9

**BAKER
HUGHES**

REFERENCE WELLPATH IDENTIFICATION

Operator	SRC ENERGY	Slot	SLOT#13 FALKEN 30N-14B-S (1724'FSL & 276'FEL, SEC.11)
Area	COLORADO	Well	FALKEN 30N-14B-S
Field	WELD COUNTY (NAD83,TRUE NORTH)	Wellbore	FALKEN 30N-14B-S AWB
Facility	SEC.11-T06N-R66W		

WELLPATH DATA (152 stations)

MD [ft]	Inclination [°]	Azimuth [°]	TVD [ft]	Vert Sect [ft]	North [ft]	East [ft]	DLS [°/100ft]	Comments
13386.00	89.540	268.970	7100.12	4991.35	-1832.70	-4988.48	0.13	LAST BHGE MWD SURVEY (112'FNL & 67'FWL, SEC.14)
13410.00	89.540	268.970	7100.31	5015.34	-1833.13	-5012.47	0.00	PROJECTION TO BIT (112'FNL & 43'FWL, SEC.14)

HOLE & CASING SECTIONS

- Ref Wellbore: FALKEN 30N-14B-S AWB Ref Wellpath: FALKEN 30N-14B-S AWP

String/Diameter	Start MD [ft]	End MD [ft]	Interval [ft]	Start TVD [ft]	End TVD [ft]	Start N/S [ft]	Start E/W [ft]	End N/S [ft]	End E/W [ft]
13.5in Open Hole	25.00	1815.00	1790.00	25.00	1759.79	0.00	0.00	-311.41	209.18
9.625in Casing Surface	25.00	1815.00	1790.00	25.00	1759.79	0.00	0.00	-311.41	209.18
8.5in Open Hole	1815.00	13410.00	11595.00	1759.79	7100.31	-311.41	209.18	-1833.13	-5012.47



Actual Wellpath Report

FALKEN 30N-14B-S AWP

Page 8 of 9



REFERENCE WELLPATH IDENTIFICATION			
Operator	SRC ENERGY	Slot	SLOT#13 FALKEN 30N-14B-S (1724'FSL & 276'FEL, SEC.11)
Area	COLORADO	Well	FALKEN 30N-14B-S
Field	WELD COUNTY (NAD83,TRUE NORTH)	Wellbore	FALKEN 30N-14B-S AWB
Facility	SEC.11-T06N-R66W		

TARGETS								
Name	TVD [ft]	North [ft]	East [ft]	Grid East [US ft]	Grid North [US ft]	Latitude	Longitude	Shape
SEC.10-T6N-R66W	0.00	179.97	1.67	3212478.20	1426196.25	40°30'02.869"N	104°44'09.402"W	polygon
SEC.11-T6N-R66W SOUTHERN HALF	0.00	179.97	1.67	3212478.20	1426196.25	40°30'02.869"N	104°44'09.402"W	polygon
SEC.14-T6N-R66W NORTHERN HALF	0.00	179.97	1.67	3212478.20	1426196.25	40°30'02.869"N	104°44'09.402"W	polygon
SEC.9-T6N-R66W EAST QUARTER	0.00	179.97	1.67	3212478.20	1426196.25	40°30'02.869"N	104°44'09.402"W	polygon
FALKEN 30N-14B-S TOP OF PROD ON PLAT (140'FNL & 300'FWL, SEC.13)	7065.00	-1863.85	564.32	3213058.43	1424157.43	40°29'42.673"N	104°44'02.119"W	point
FALKEN 30N-14B-S BHL REV-2 (129'FNL & 50'FWL, SEC.14)	7090.03	-1849.86	-5005.21	3207489.18	1424123.42	40°29'42.806"N	104°45'14.209"W	circle
FALKEN 30N-14B-S TOP OF PROD REV-2 (140'FNL & 300'FWL, SEC.13)	7091.33	-1863.85	564.32	3213058.43	1424157.43	40°29'42.673"N	104°44'02.119"W	circle
FALKEN 30N-14B-S BHL ON PLAT (129'FNL & 50'FWL, SEC.09)	7111.00	-1849.86	-5005.21	3207489.18	1424123.42	40°29'42.806"N	104°45'14.209"W	point

WELLPATH COMPOSITION - Ref Wellbore: FALKEN 30N-14B-S AWB Ref Wellpath: FALKEN 30N-14B-S AWP				
Start MD [ft]	End MD [ft]	Positional Uncertainty Model	Log Name/Comment	Wellbore
25.00	1773.00	BHI NaviTrak (Standard)	13 1/2" APS EM SURVEYS <153'-1773'>	FALKEN 30N-14B-S AWB
1773.00	13386.00	BHI AutoTrak Curve (IFR1, Short)	8 1/2" AT-CURVE SURVEYS <1882'-13386'>	FALKEN 30N-14B-S AWB
13386.00	13410.00	Blind Drilling (std)	Projection to bit	FALKEN 30N-14B-S AWB



SRC ENERGY

Actual Wellpath Report

FALKEN 30N-14B-S AWP

Page 9 of 9



**BAKER
HUGHES**

REFERENCE WELLPATH IDENTIFICATION

Operator	SRC ENERGY	Slot	SLOT#13 FALKEN 30N-14B-S (1724'FSL & 276'FEL, SEC.11)
Area	COLORADO	Well	FALKEN 30N-14B-S
Field	WELD COUNTY (NAD83,TRUE NORTH)	Wellbore	FALKEN 30N-14B-S AWB
Facility	SEC.11-T06N-R66W		

WELLPATH COMMENTS

MD [ft]	Inclination [°]	Azimuth [°]	TVD [ft]	Comment
7878.00	90.580	273.650	7091.37	LANDING POINT (144'FNL & 251'FWL, SEC.13)
13386.00	89.540	268.970	7100.12	LAST BHGE MWD SURVEY (112'FNL & 67'FWL, SEC.14)
13410.00	89.540	268.970	7100.31	PROJECTION TO BIT (112'FNL & 43'FWL, SEC.14)