

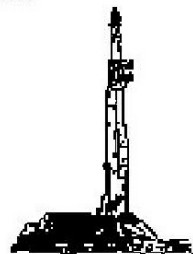
GOOLSBY BROTHERS
and associates, inc.

575 Union Blvd, Suite 208
Lakewood, CO 80228
303-945-2860 Office



Geological Wellsite
Supervision

www.goolsbybrothers.com



Scale 1:240 (5"=100') Imperial
Measured Depth Log

Well Name: Falken 30N-14B-S

API: 051234511100

Location: NE/SE Section 11 T6N R66W Weld County, CO.

License Number:

Spud Date: January 6, 2018

Surface Coordinates: 1724'FSL & 276'FEL NE/SE Sec.11 T6N R66W

Lat/Long: 40°30'01.091"N / 104°44'09.424"W

Bottom Hole Coordinates: Planned: 129'FNL & 50'FWL NW/NW Sec.14 T6N R66W

Projected: 112'FNL & 43'FWL NW/NW Sec.14 T6N R66W

Ground Elevation (ft): 4,810'

K.B. Elevation (ft): 4,835'

Logged Interval (ft): 6700'

To: 13,410'

Total Depth (ft): 13,410' DMTD

Formation: Niobrara B

Type of Drilling Fluid: OBM (LSND Surface).

Region: Wattenberg

Drilling Completed: January 9, 2018

Printed by HORIZONTAL.LOG from WellSight Systems 1-800-447-1534 www.WellSight.com

OPERATOR

Company: SRC Energy, Inc

Geologist: Julia Caldaro

Address: 1675 Broadway, Suite 2600

Denver, Colorado 80202

(720) 616-4300

GEOLOGIST

Name: Dallan Gardner & Tekabe Gedamu

Company: Goolsby Brothers & Assoc. (GBA), Inc. (www.goolsbybrothers.com)

Address: 575 Union Blvd. Suite 208,

Lakewood CO. 80228

Tel 303-618-7736

E-logs

MWD GR from S.C. to 13,396' MD

Casing

9 5/8" Surface Casing pre set @ 1800' MD.

5 1/2" Production Liner run on 12/xx/2017 set at xxx' MD.

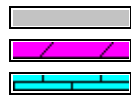
Comments

- 1) Drilling Contractor: Precision Drilling, Rig #562
Pumps 1&2: Rostell F-1600 5" x 12" (.0692 Bbls./stroke)
Toolpusher: Joseph Credeur, Tyson Westgard.
- 2) Company Man: Kent Priddy
Kevin Brakovec
Tim Jones
Kalib Ford
- 3) Mud Comapny : Anchor USA
Engineer: Joseph P. Wood
- 4) Directional Drilling: Baker Hughes
Drillers: Ryan Kielian, Aaron Herskind
MWD: Garrett Gersden, Baker Remote Field Operations.
- 5) Gas Equipment: Pason Gas Analyzer (Spectrometer)

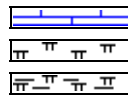
ROCK TYPES



Bent
Cht
Clyst



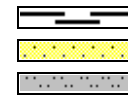
Oil sat.
Dol
Lmst



Chalk
Mrlst
Mrlst_sh (intbdd)



Shale
Shgy
Slty sh



Carb sh
Ss
Slstst

ACCESSORIES

MINERAL

Anhy
 Arggrn
 Arg
 Bent
 Bit
 Brecfrag
 Calc
 Carb
 Chtdk
 Chtlt
 Dol
 Feldspar
 Ferrpel
 Ferr
 Glau

Gyp
 Hvymin
 Kaol
 Marl
 Minxl
 Nodule
 Phos
 Pyr
 Salt
 Sandy
 Silt
 Sil
 Sulphur
 Tuff

FOSSIL

Algae
 Amph
 Belm
 Bioclst
 Brach
 Bryozoa
 Cephal
 Coral
 Crin
 Echin
 Fish
 Foram
 Fossil
 Gastro
 Oolite

Ostra
 Pelec
 Pellet
 Pisolite
 Plant
 Strom

STRINGER

Chlkstg
 Arg
 Bent
 Dol
 Ls
 Mrst
 Sltstrg
 Ssstrg

TEXTURE

Boundst
 Chalky
 Cryxln
 Earthy
 Finexln
 Grainst
 Lithogr
 Microxln
 Mudst
 Packst
 Wackest

OTHER SYMBOLS

OIL SHOWS

Even
 Spotted
 Ques
 Dead
 Vspotty

near even

POROSITY TYPE

Earthy
 Fenest
 Fracture

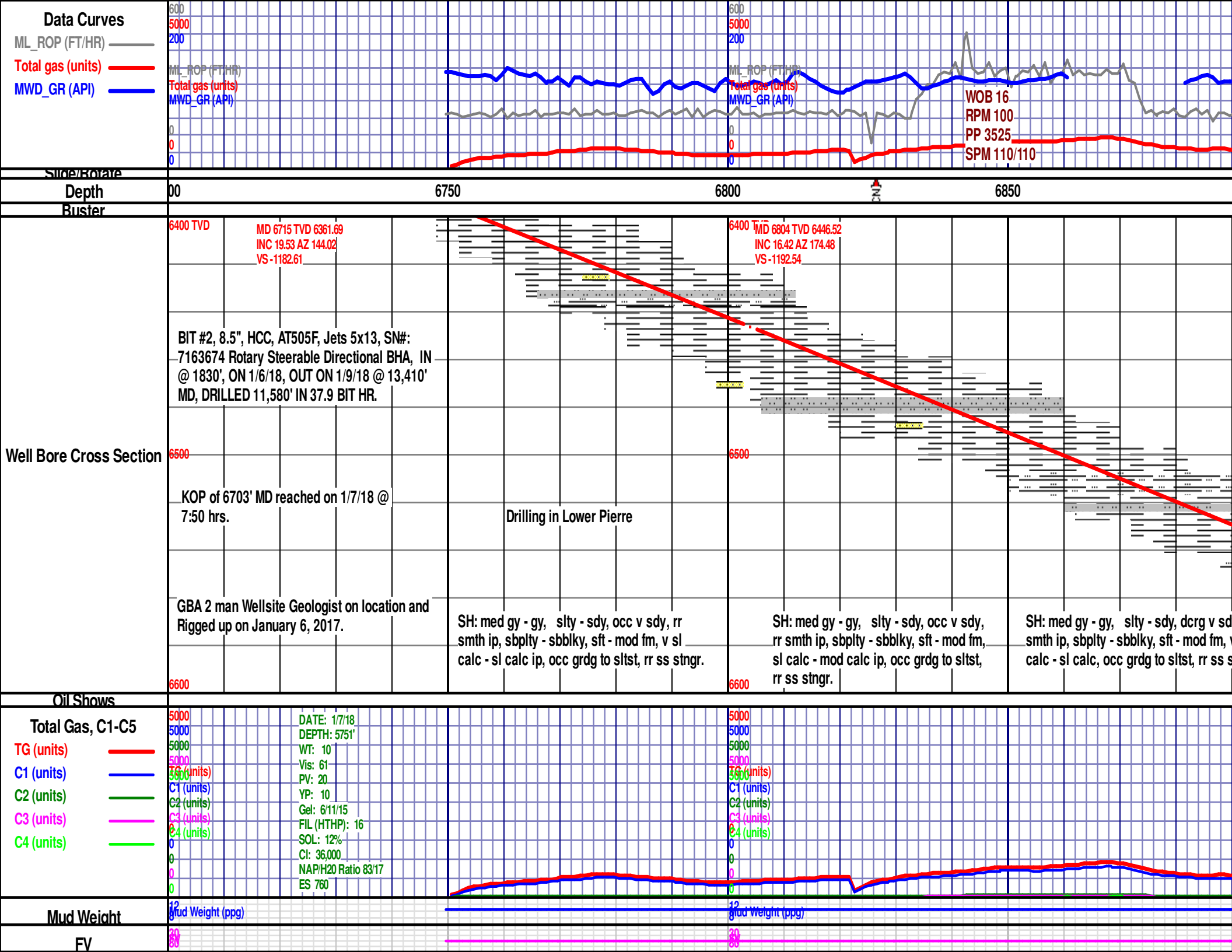
Inter
 Moldic
 Organic
 Pinpoint
 Vuggy

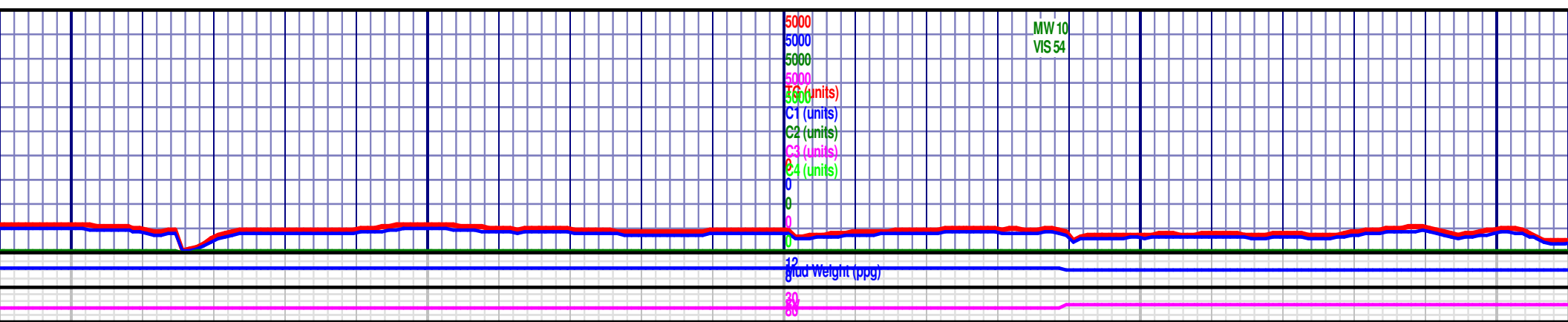
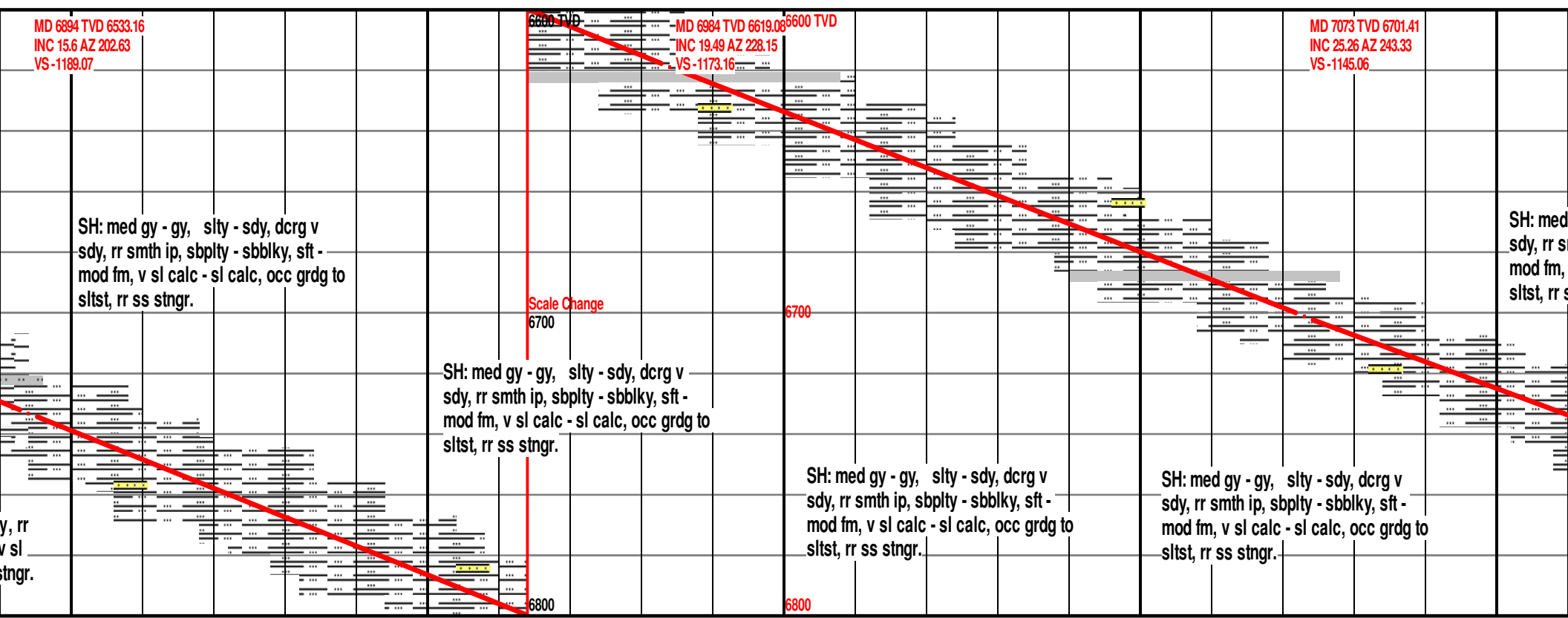
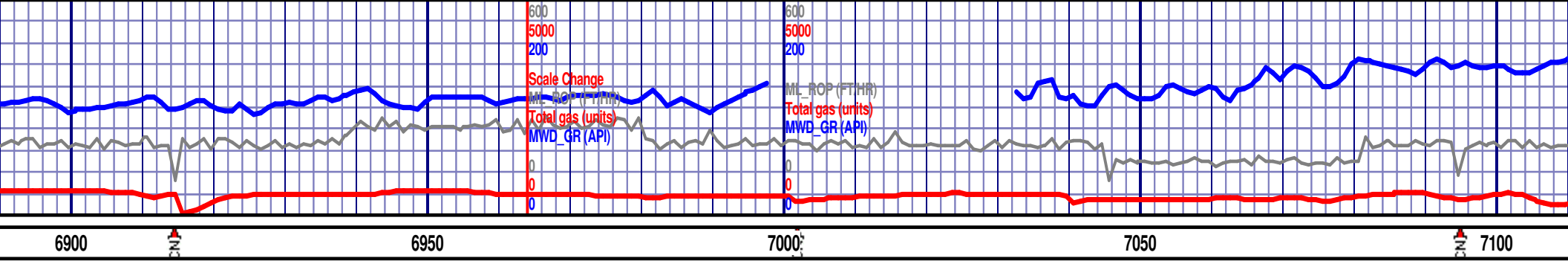
ROUNDING

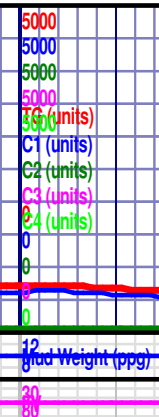
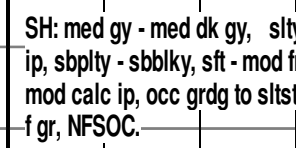
Rounded
 Subrnd
 Subang
 Angular

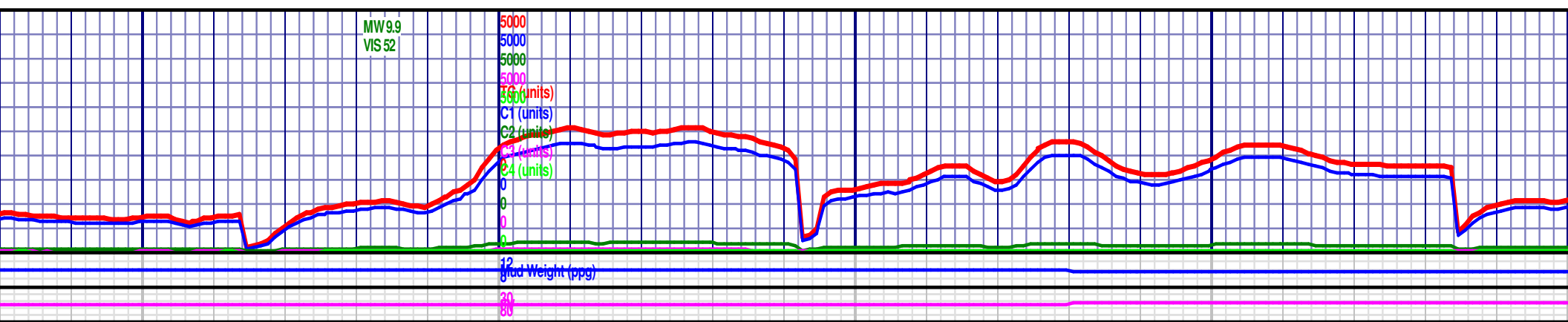
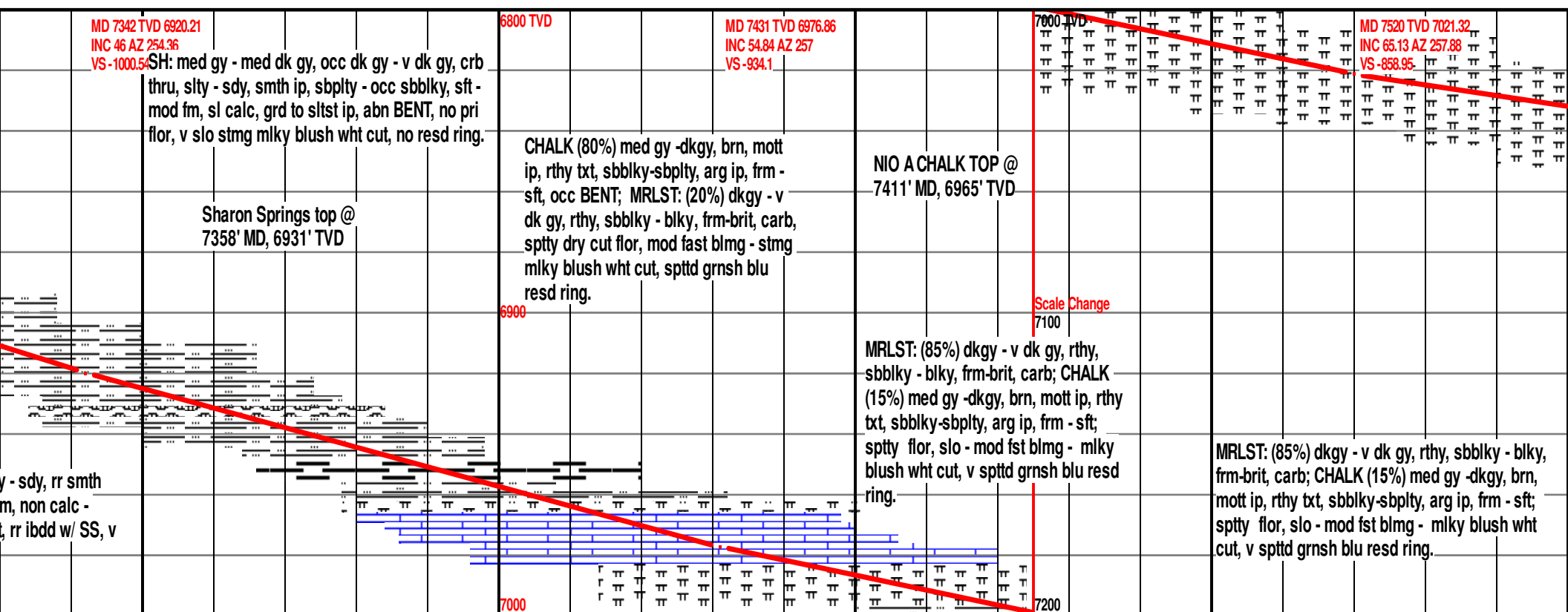
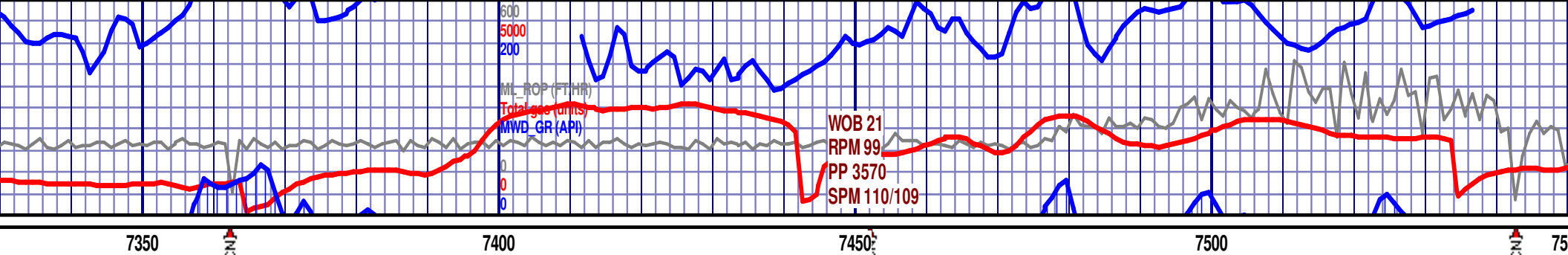
SORTING

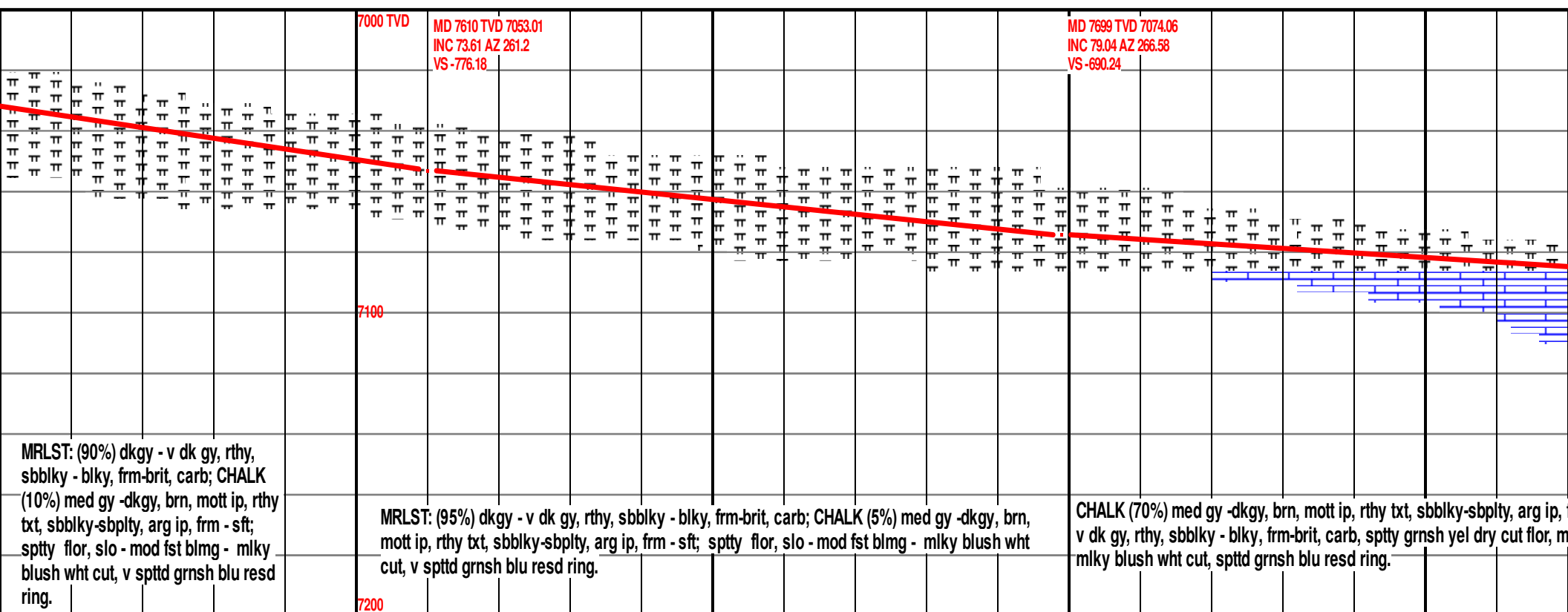
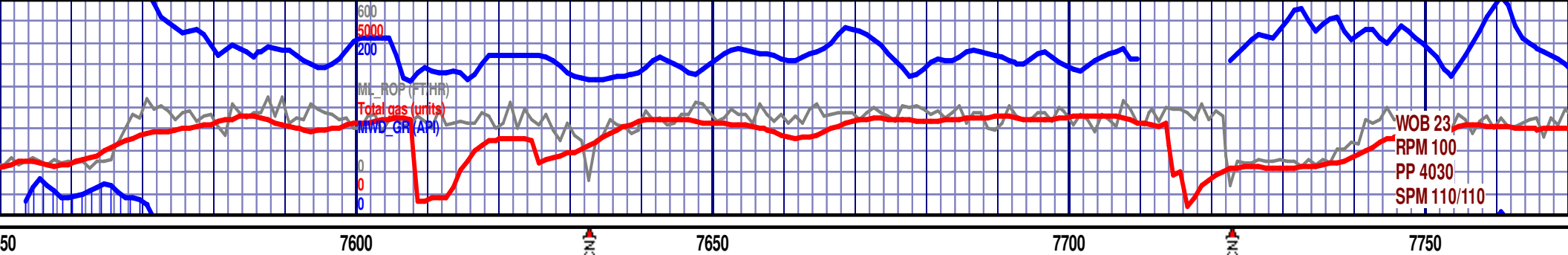
Well
 Moderate
 Poor







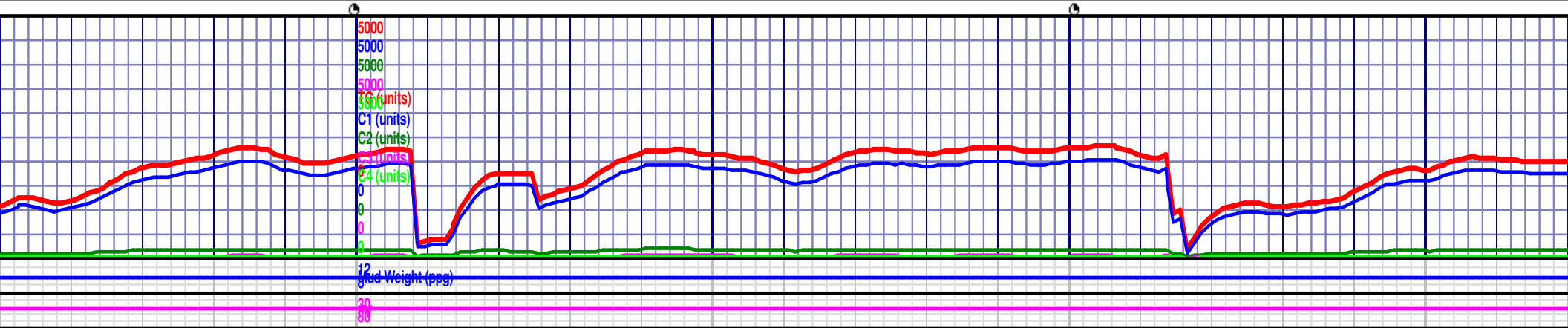


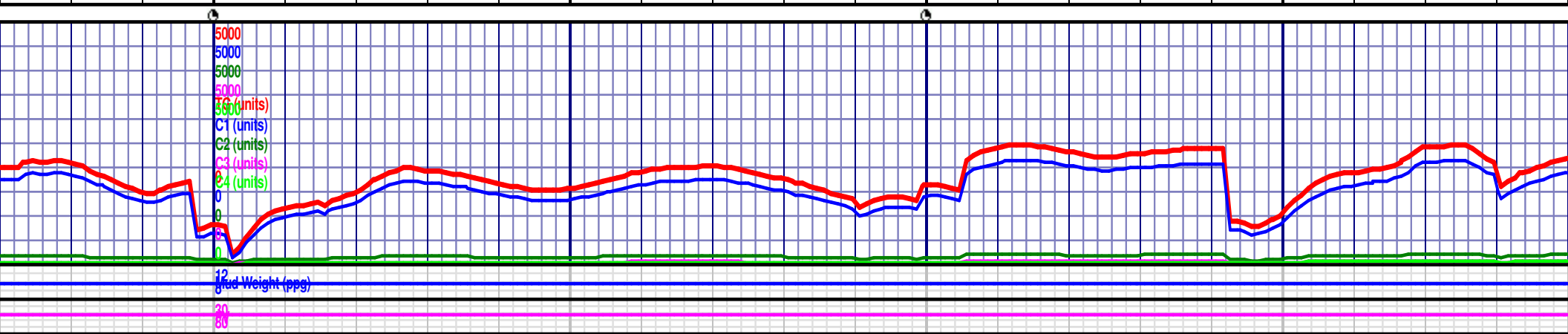
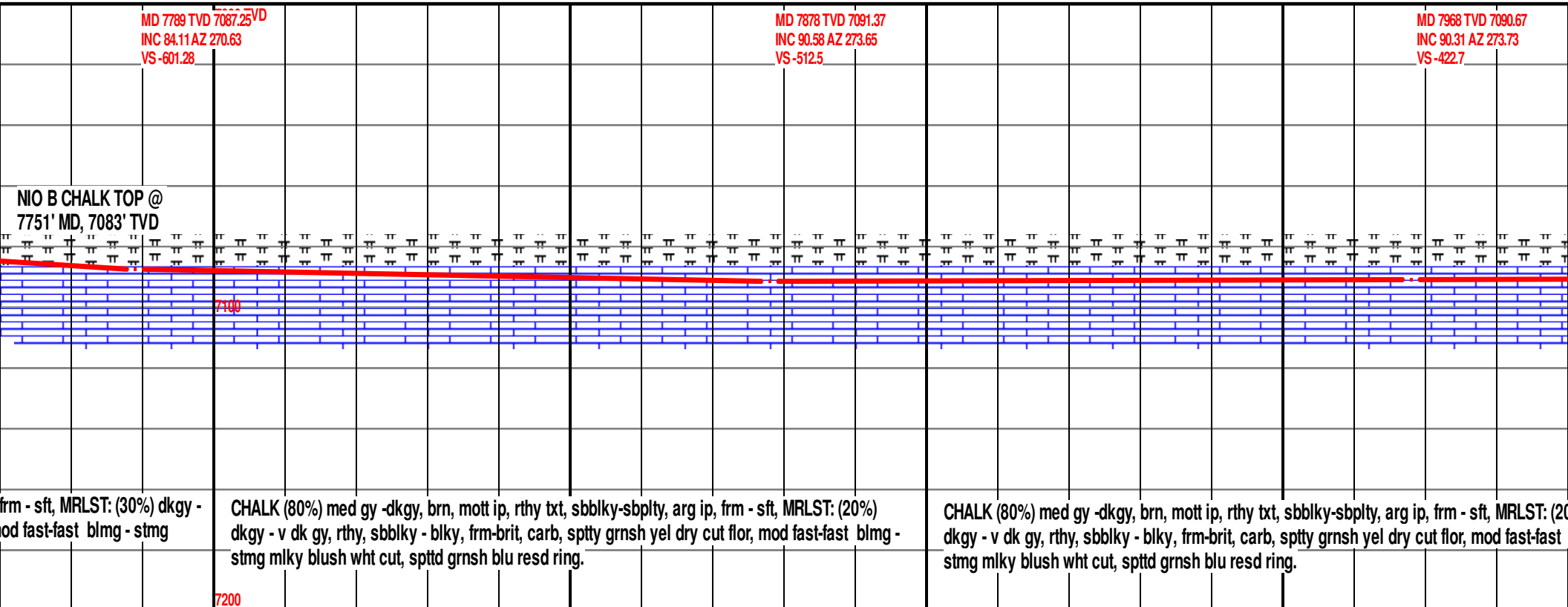


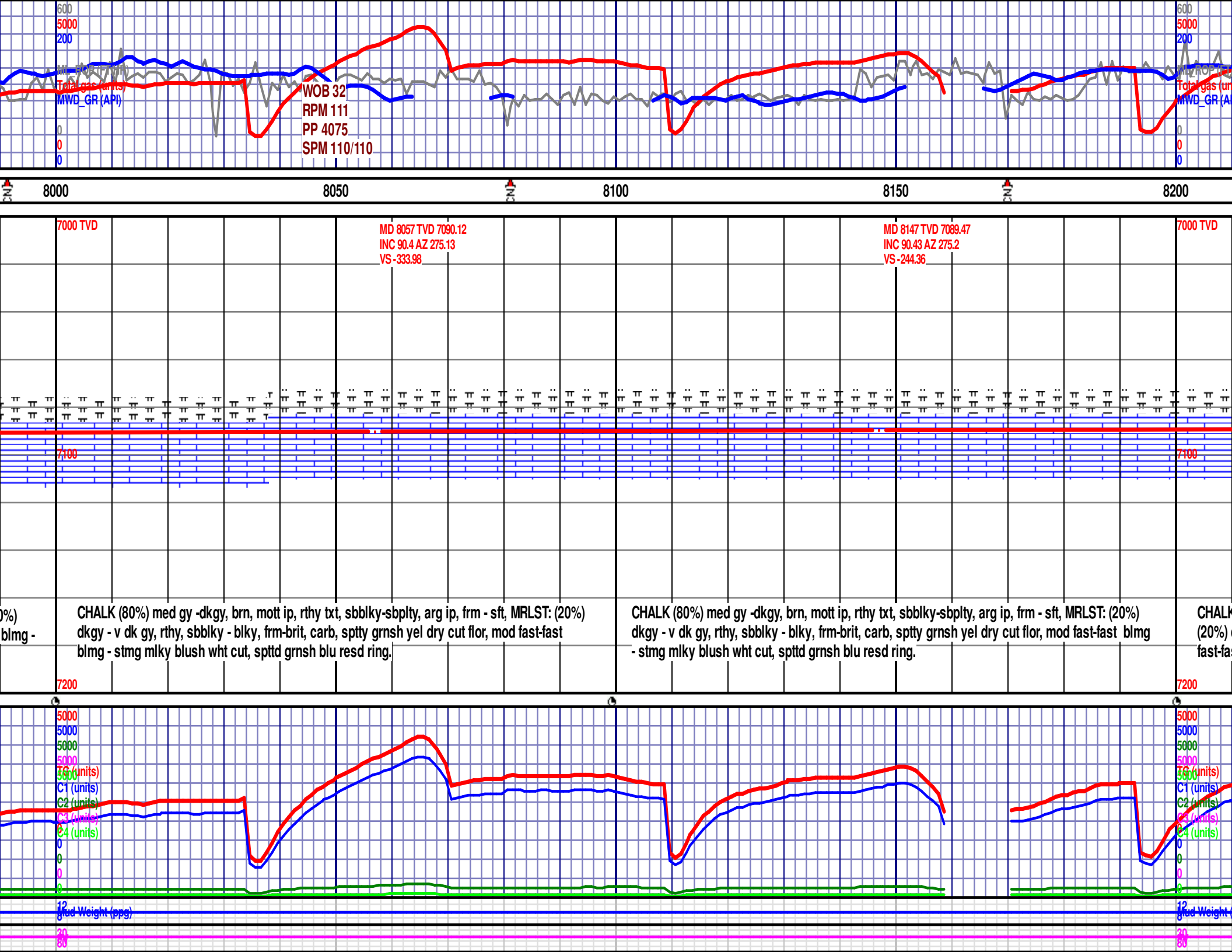
MRLST: (90%) dkgy - v dk gy, rthy, sbblky - blky, frm-brit, carb; CHALK (10%) med gy -dkgy, brn, mott ip, rthy txt, sbblky-sbplty, arg ip, frm - sft; sppty flor, slo - mod fst blmg - mlky blush wht cut, v spstd grnsh blu resd ring.

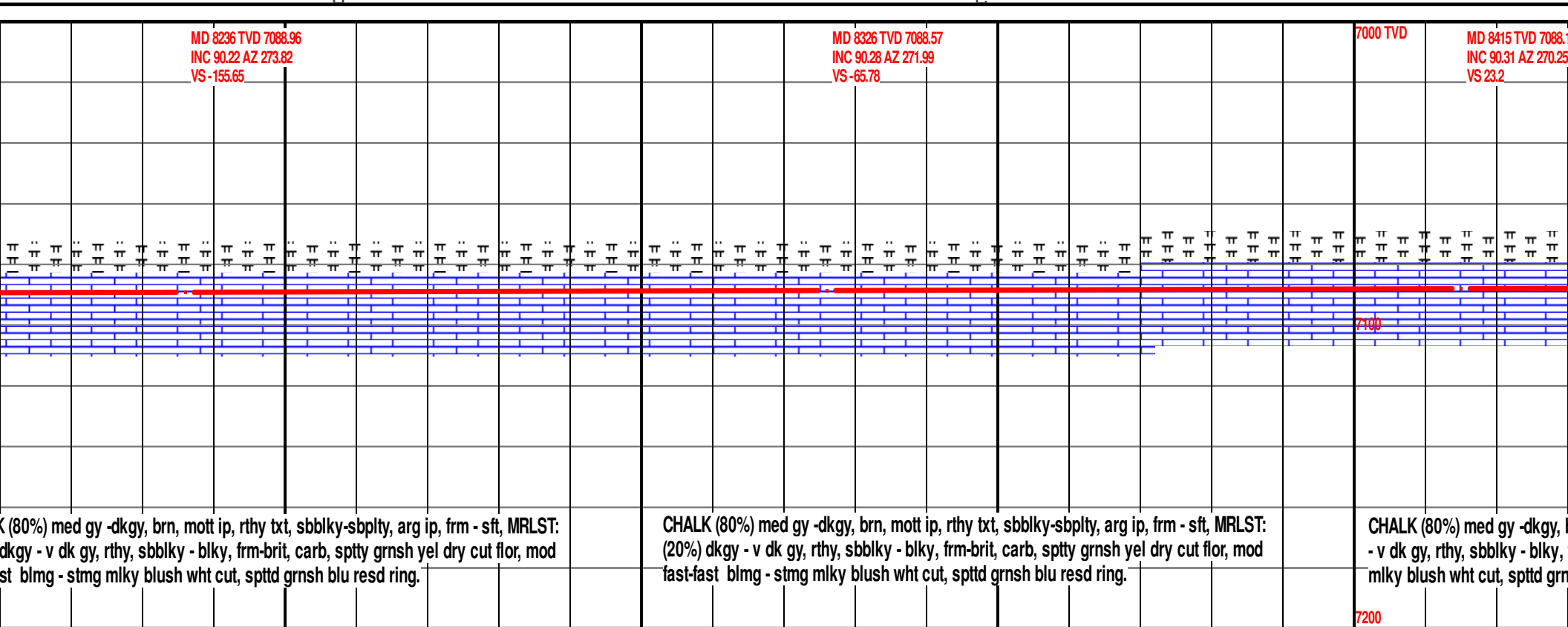
MRLST: (95%) dkgy - v dk gy, rthy, sbblky - blky, frm-brit, carb; CHALK (5%) med gy -dkgy, brn, mott ip, rthy txt, sbblky-sbplty, arg ip, frm - sft; sppty flor, slo - mod fst blmg - mlky blush wht cut, v spstd grnsh blu resd ring.

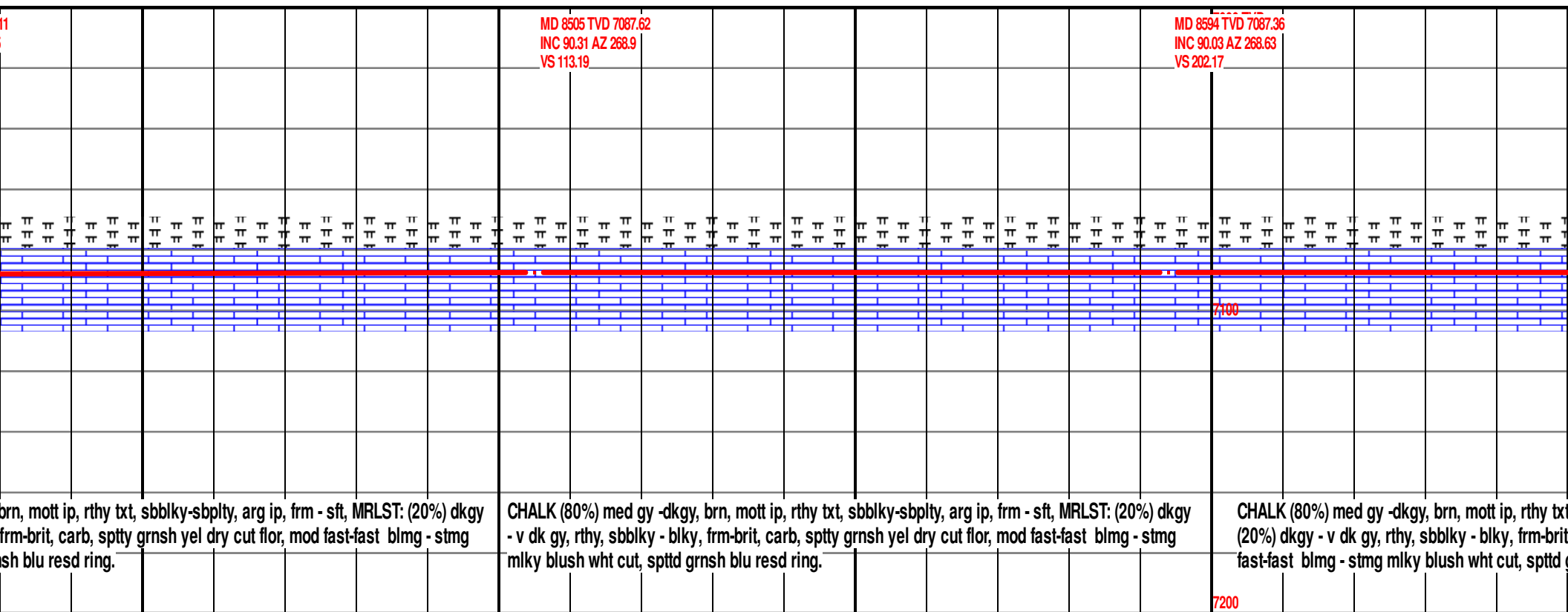
CHALK (70%) med gy -dkgy, brn, mott ip, rthy txt, sbblky-sbplty, arg ip, v dk gy, rthy, sbblky - blky, frm-brit, carb, sppty grnsh yel dry cut flor, m mlky blush wht cut, spstd grnsh blu resd ring.





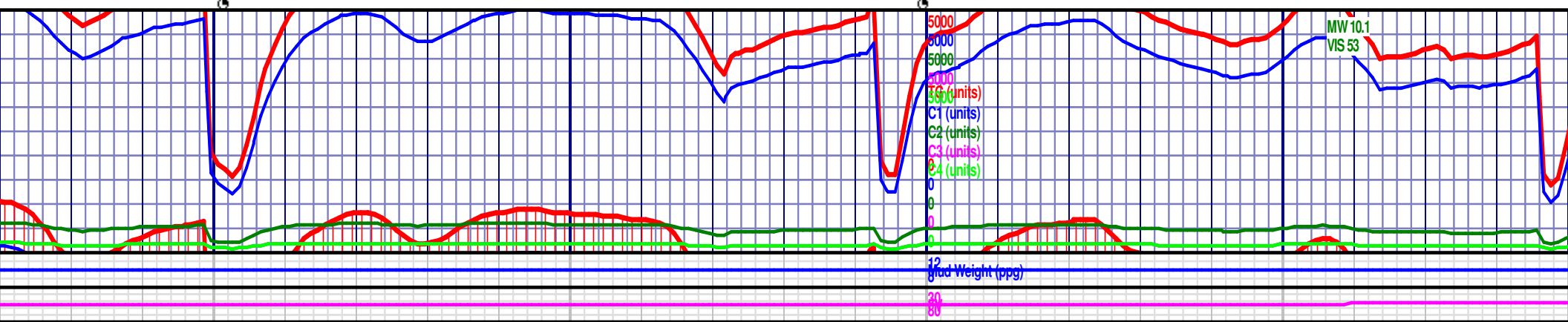


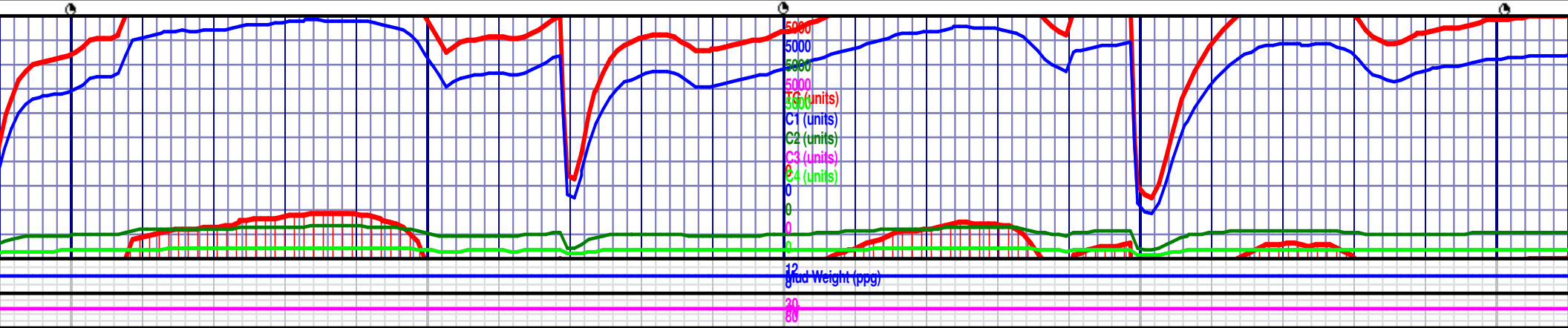
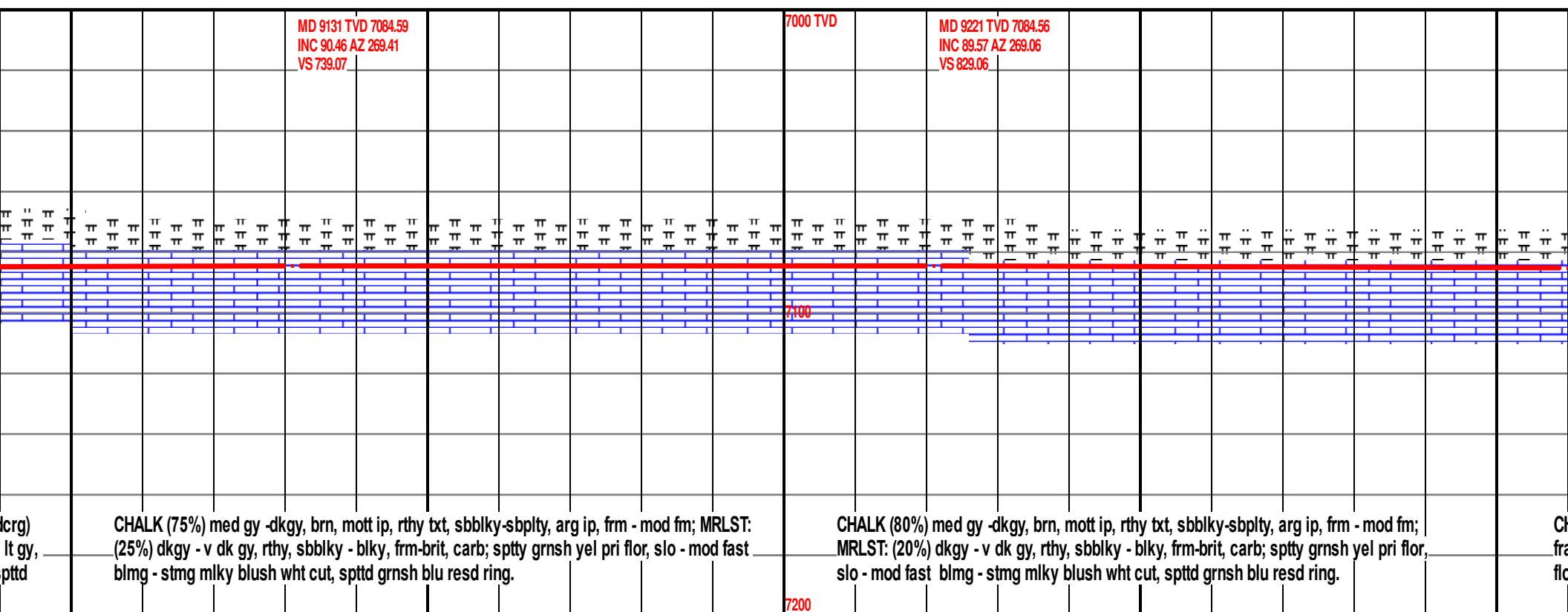
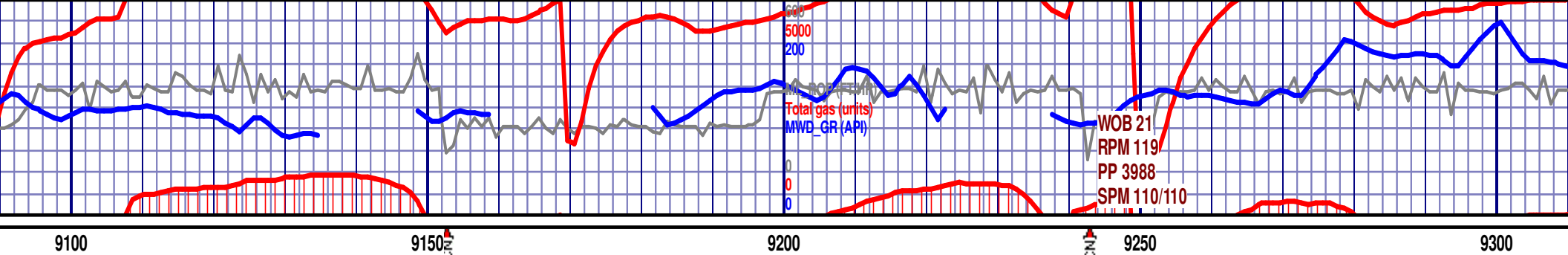


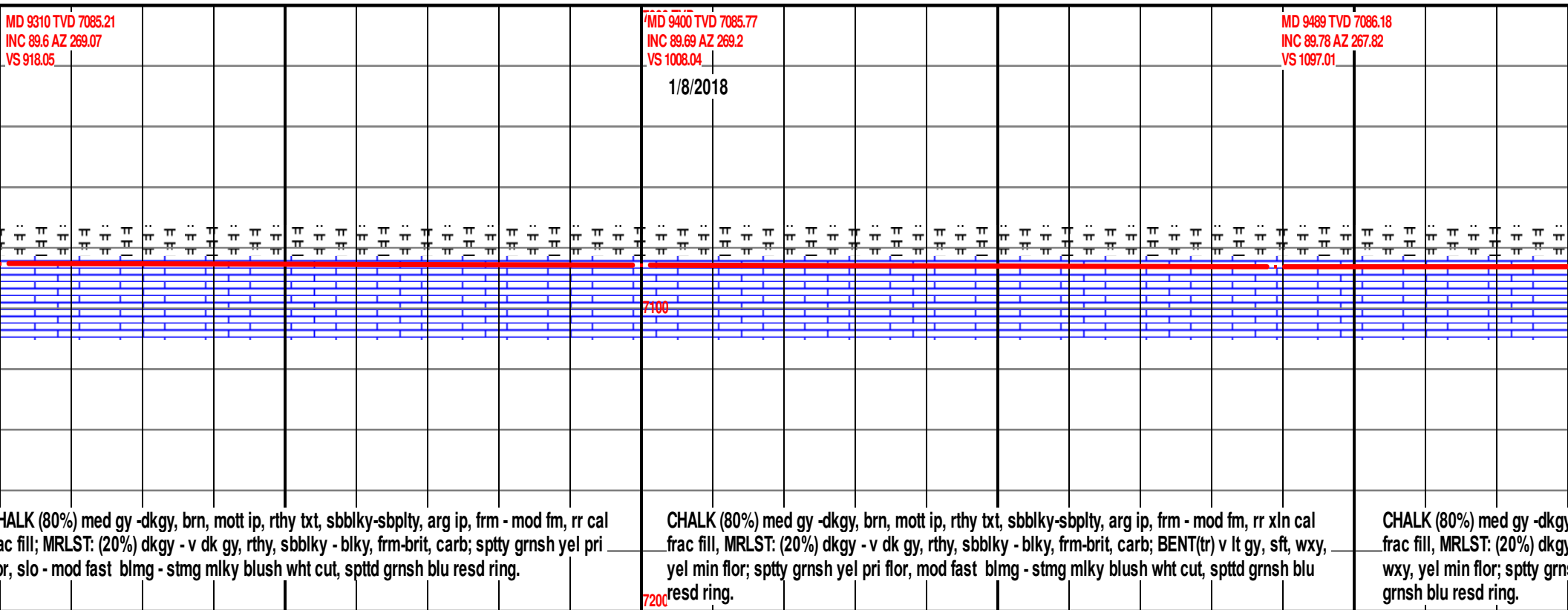


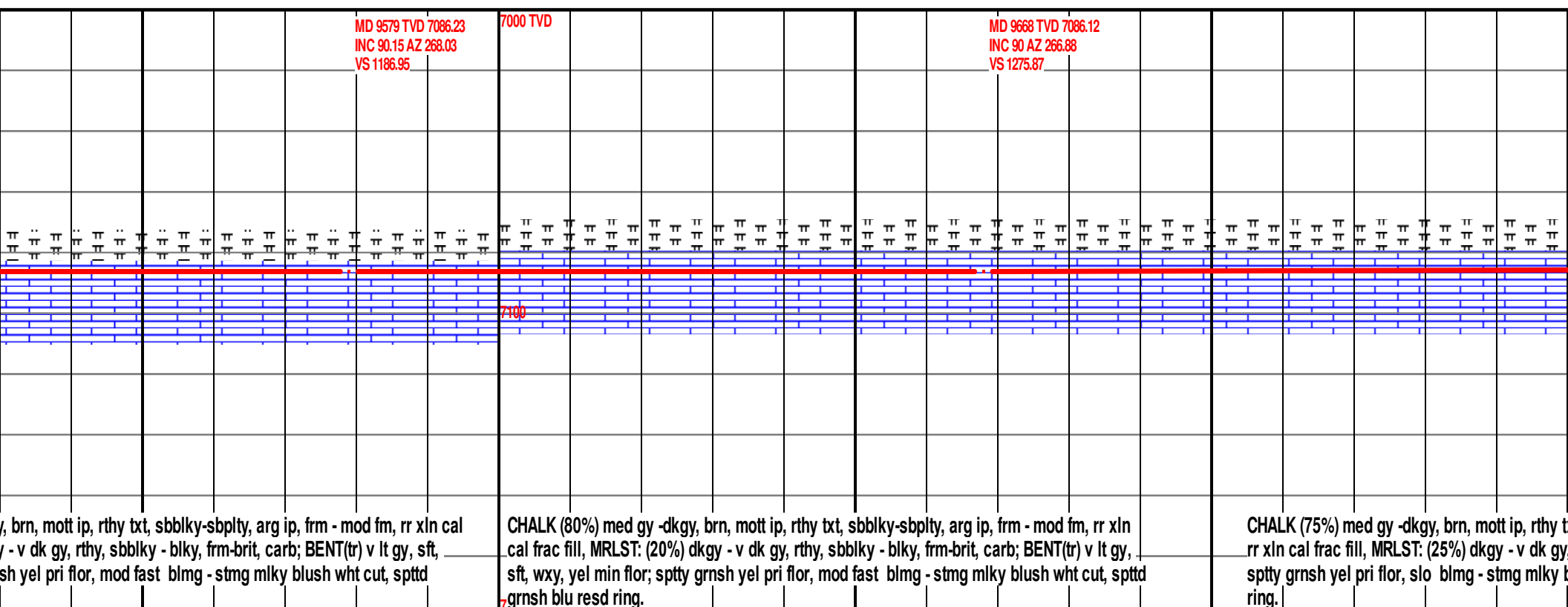


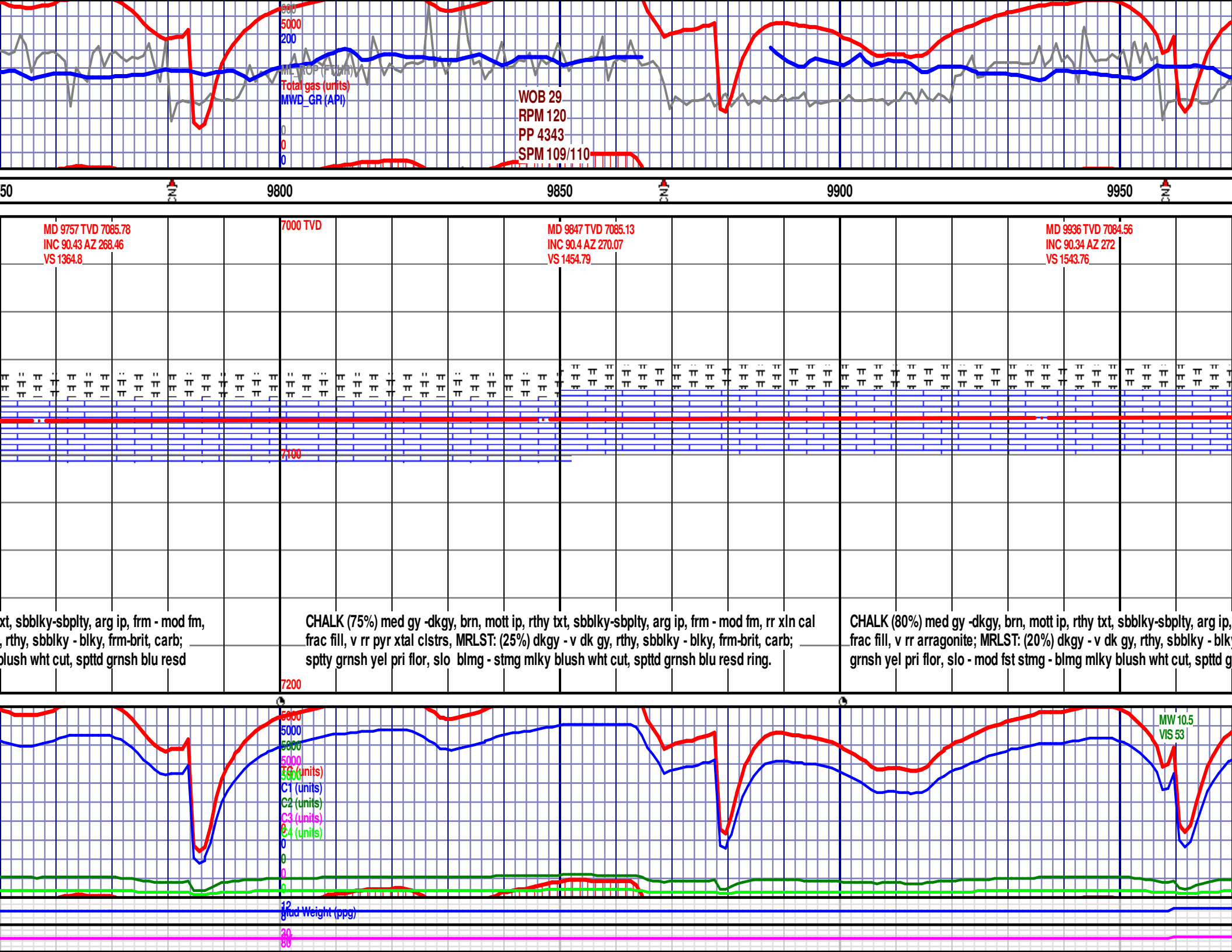
<p>TVD 7086.46 AZ 268.46 2</p> <p>ip, frm - mod fm, v rr xln t, carb, sptty grnsh yel pri ring.</p>	<p>MD 8952 TVD 7085.86 INC 90.37 AZ 268.47 VS 560.09</p> <p>CHALK (80%) med gy -dkgy, brn, mott ip, rthy txt, sbblky-sbplty, arg ip, frm - mod fm, rr (icrg) xln cal frac fill, MRLST: (20%) dkgy - v dk gy, rthy, sbblky - blk, frm-brit, carb, sptty grnsh yel pri flor, mod fast blmg - stmg mlky blush wht cut, spttd grnsh blu resd ring.</p>	<p>7000 TVD</p> <p>CHALK (80%) med gy -dkgy, brn, mott ip, rthy txt, sbblky-sbplty, arg ip, frm - mod fm, rr (icrg) xln cal frac fill, MRLST: (20%) dkgy - v dk gy, rthy, sbblky - blk, frm-brit, carb, sptty grnsh yel sft, wxy, yel min flor; sptty grnsh yel pri flor, mod fast blmg - stmg mlky blush wht cut, s grnsh blu resd ring.</p>	<p>MD 9042 TVD 7085.26 INC 90.4 AZ 269.19 VS 650.07</p>	
---	--	---	---	--

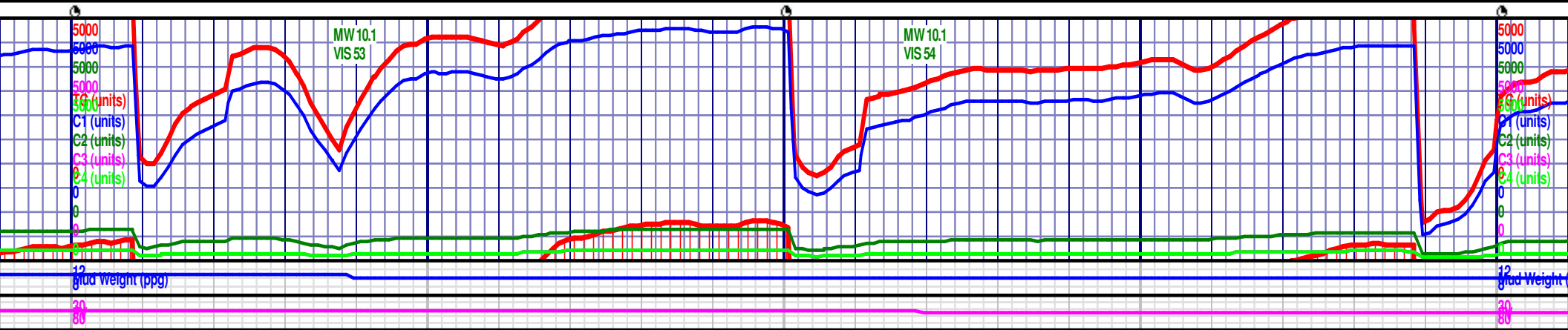
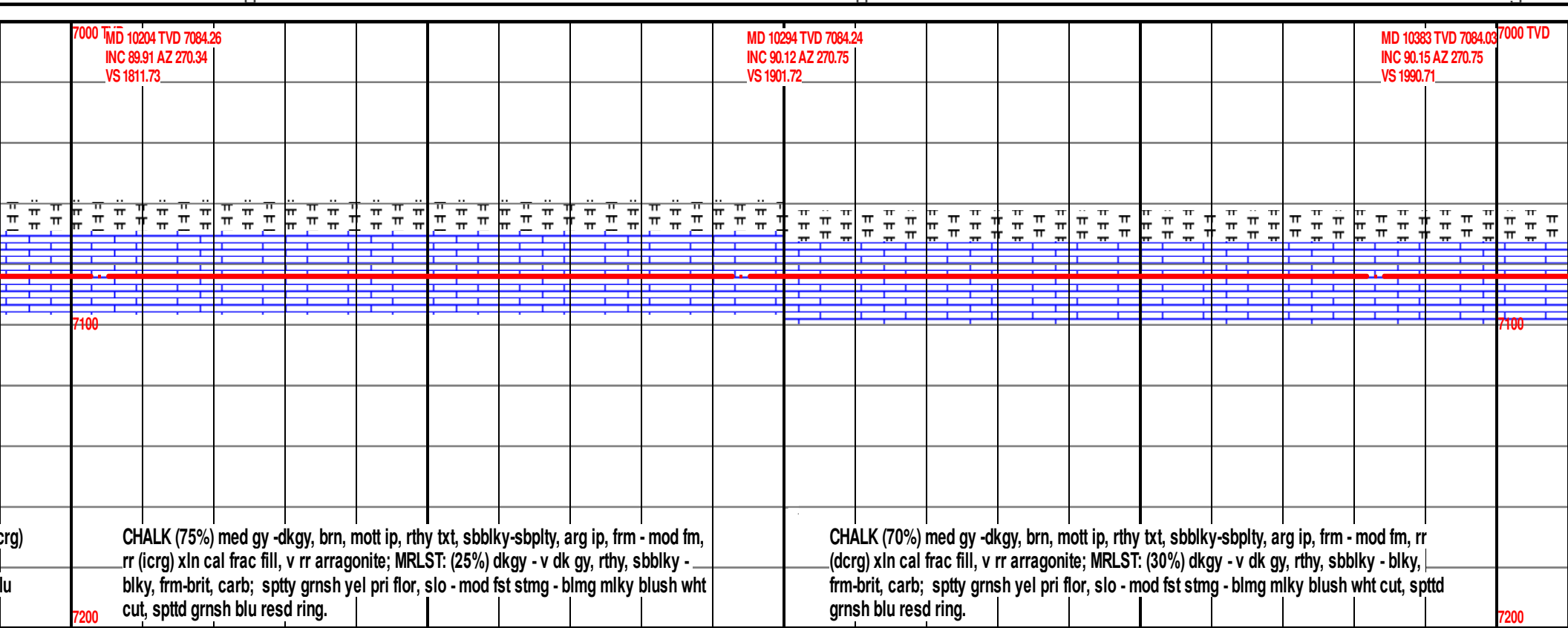
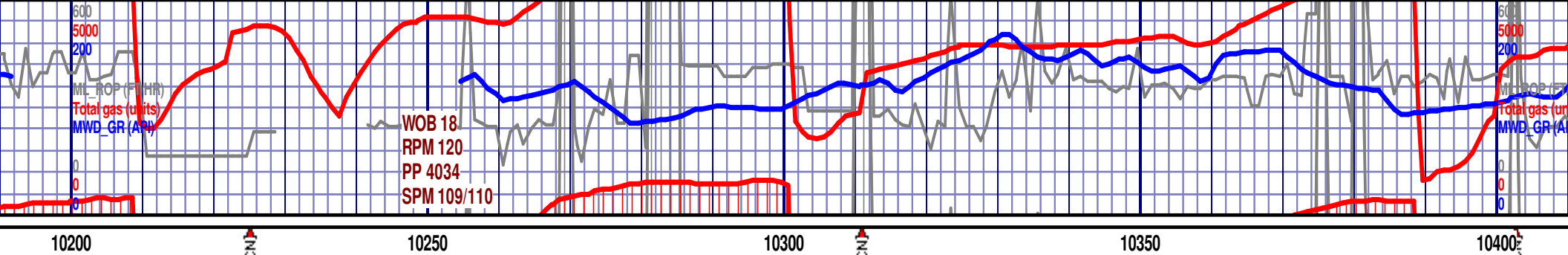


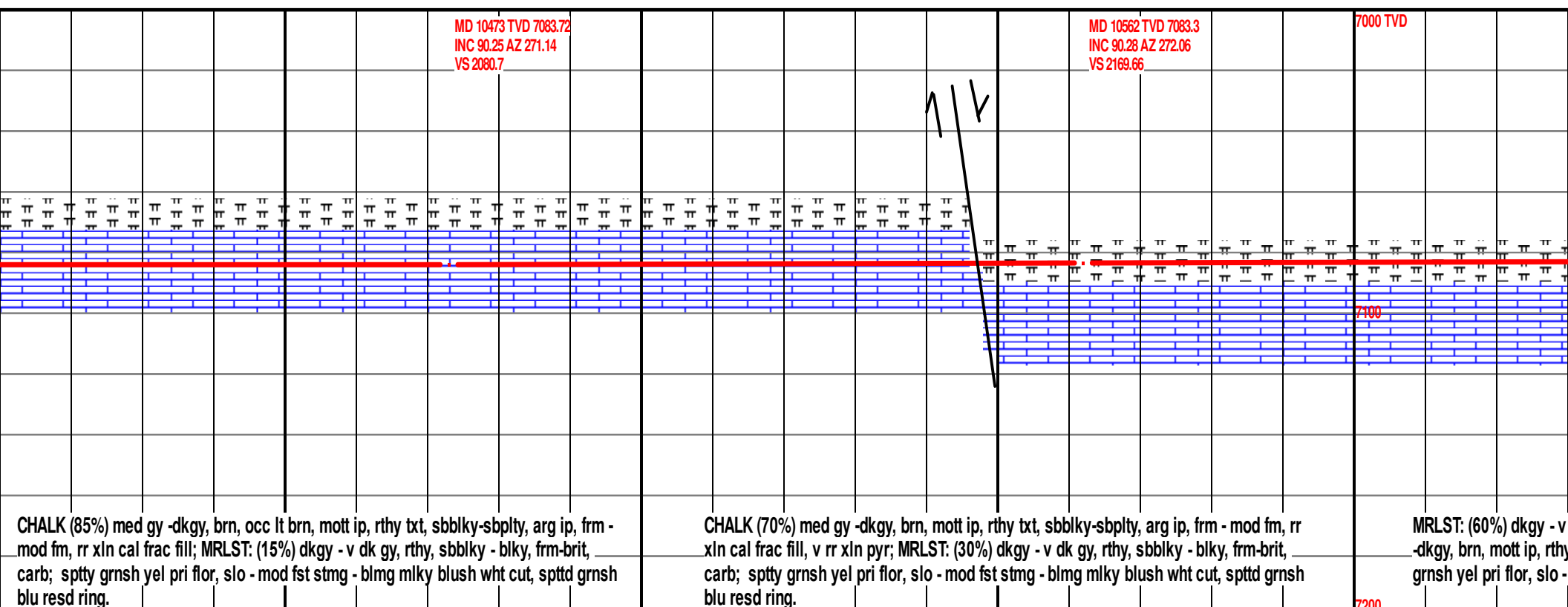


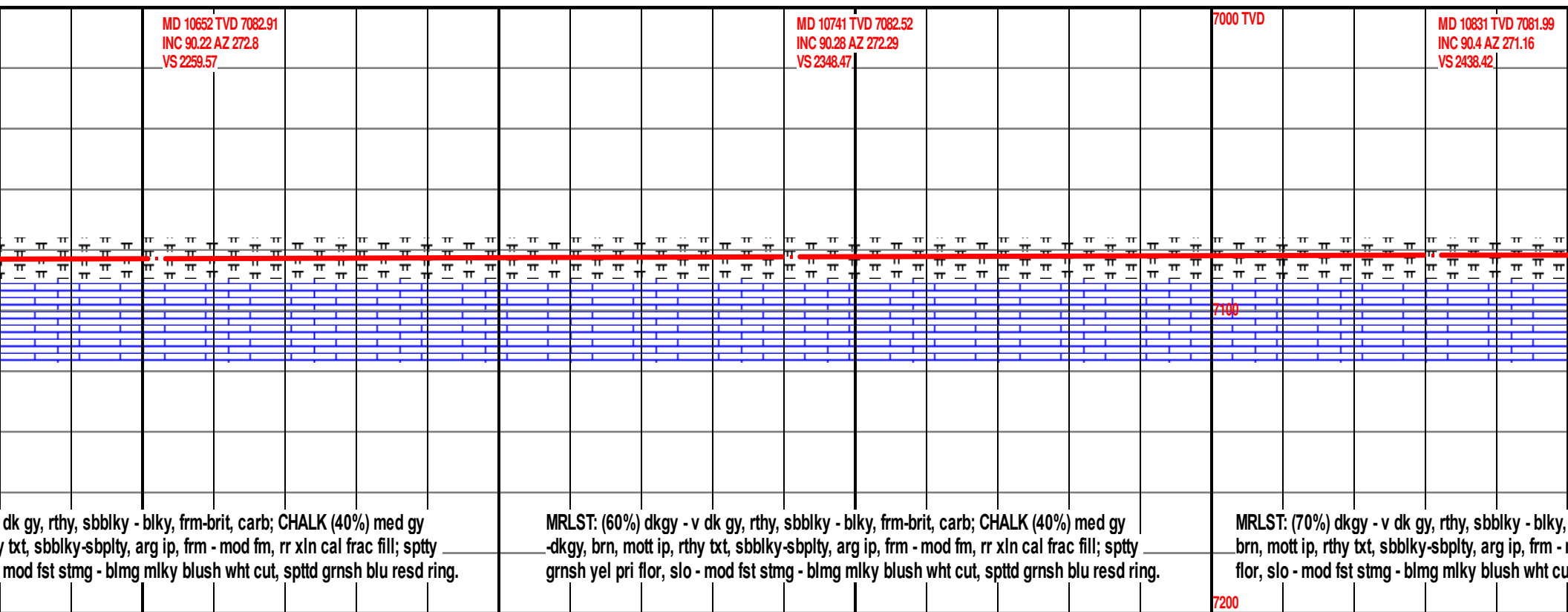


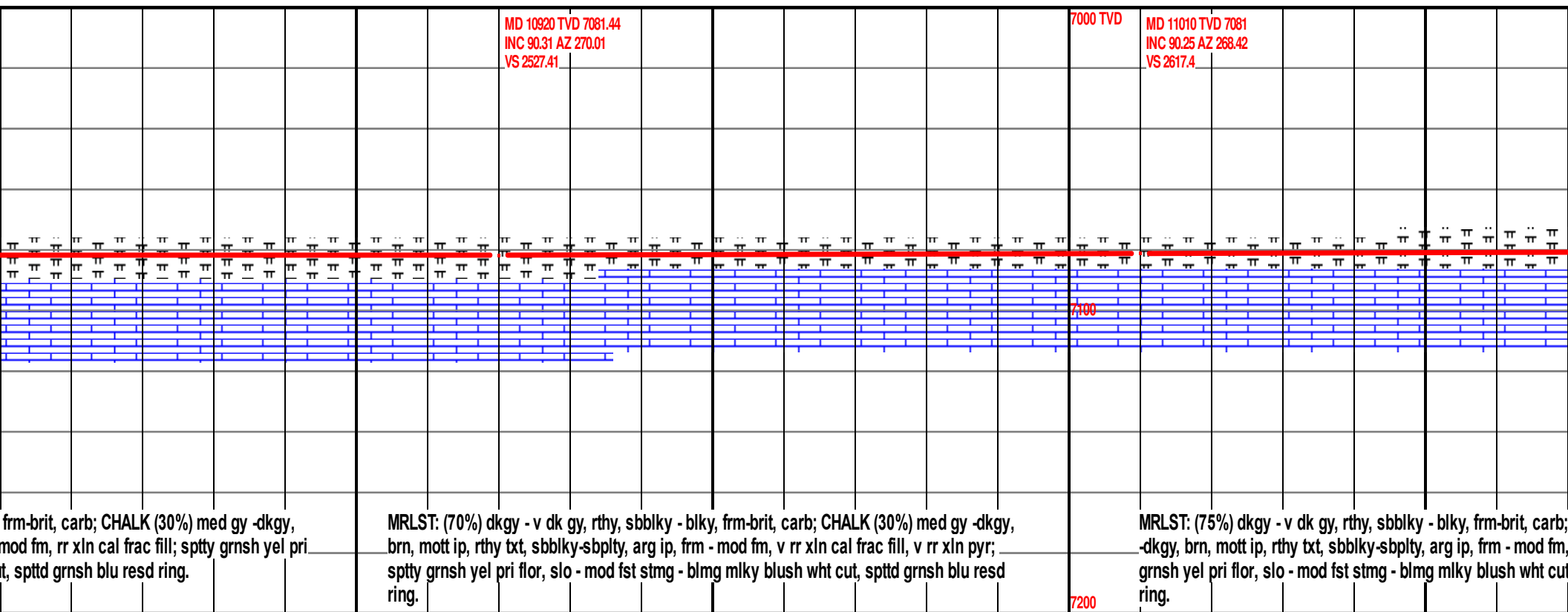


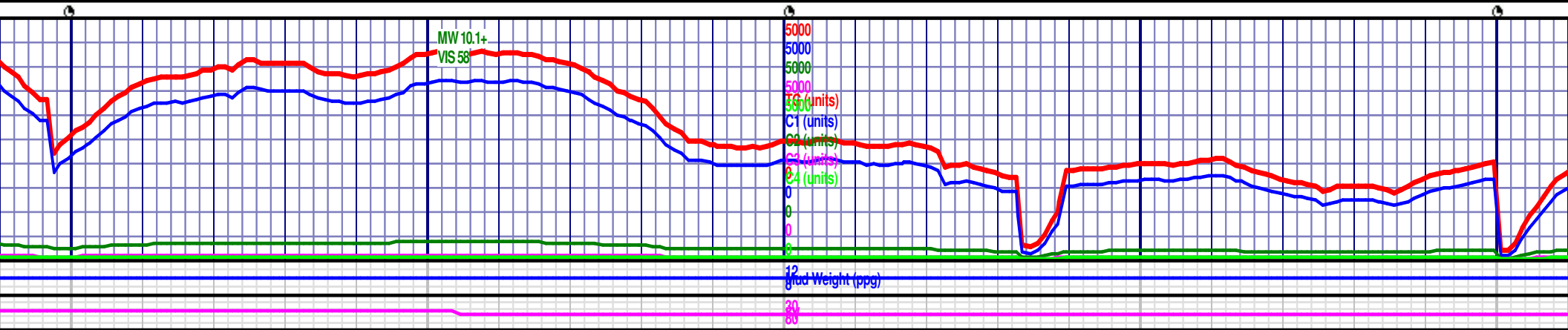
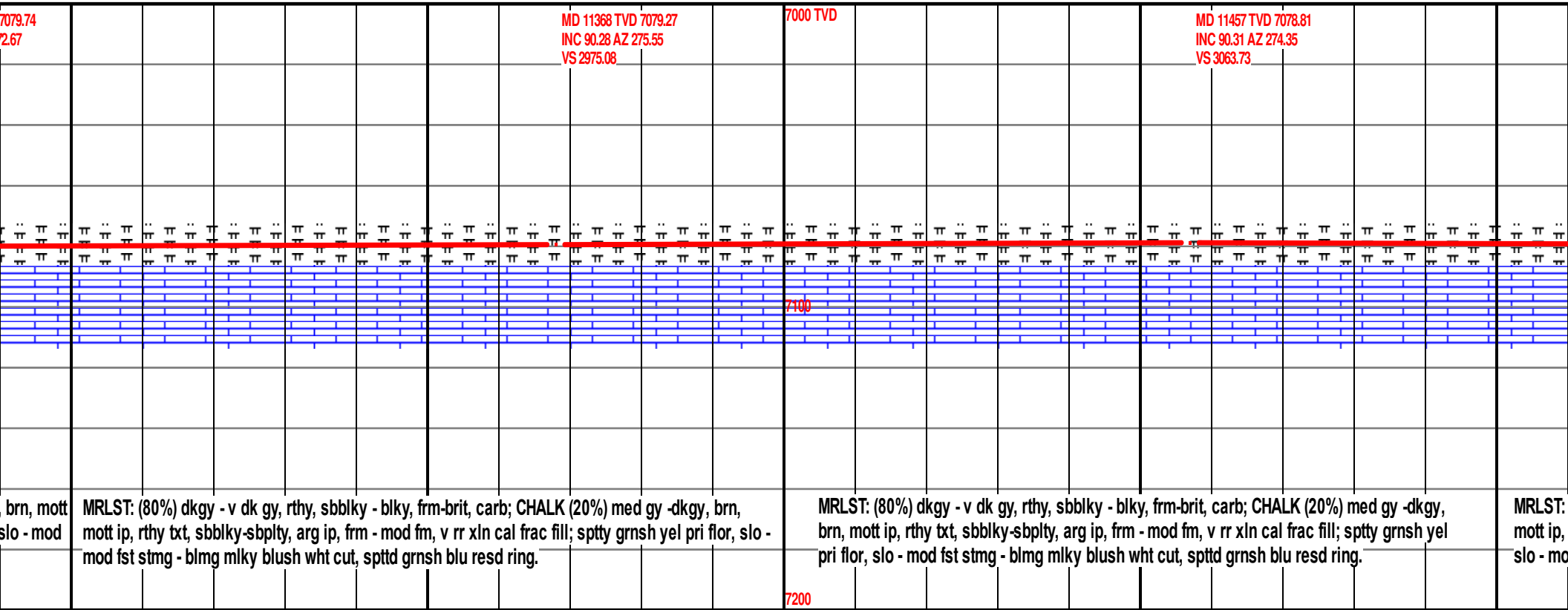


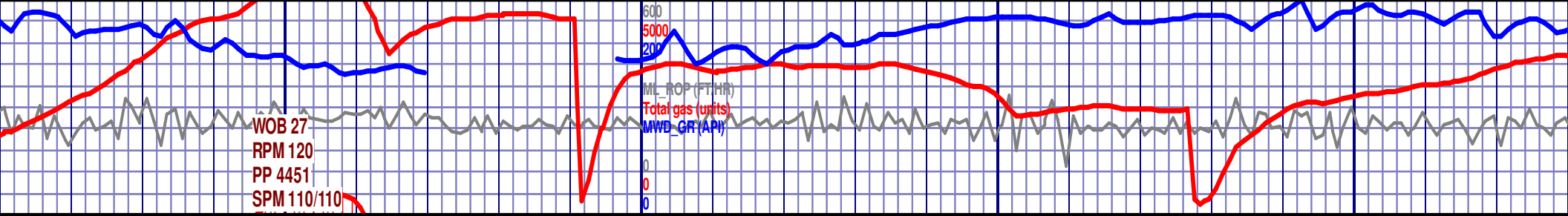












11550

11600

11650

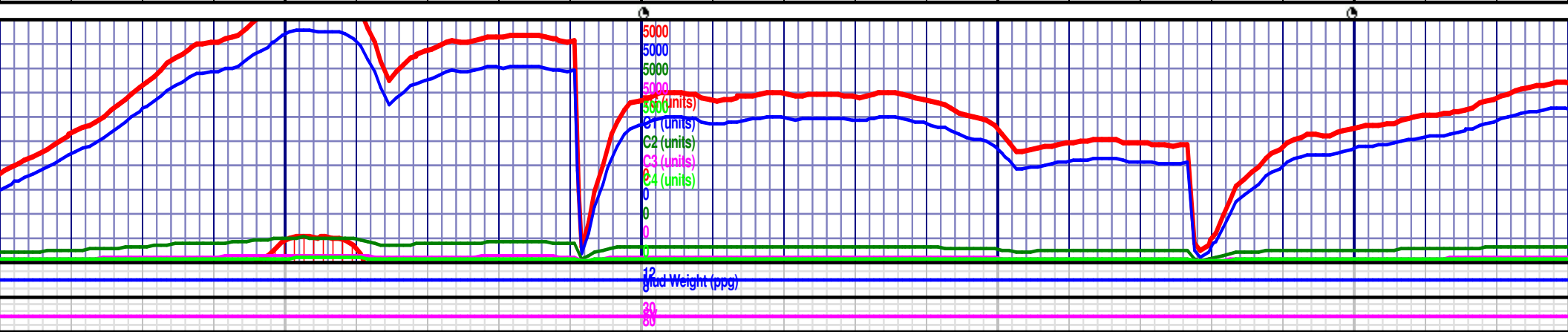
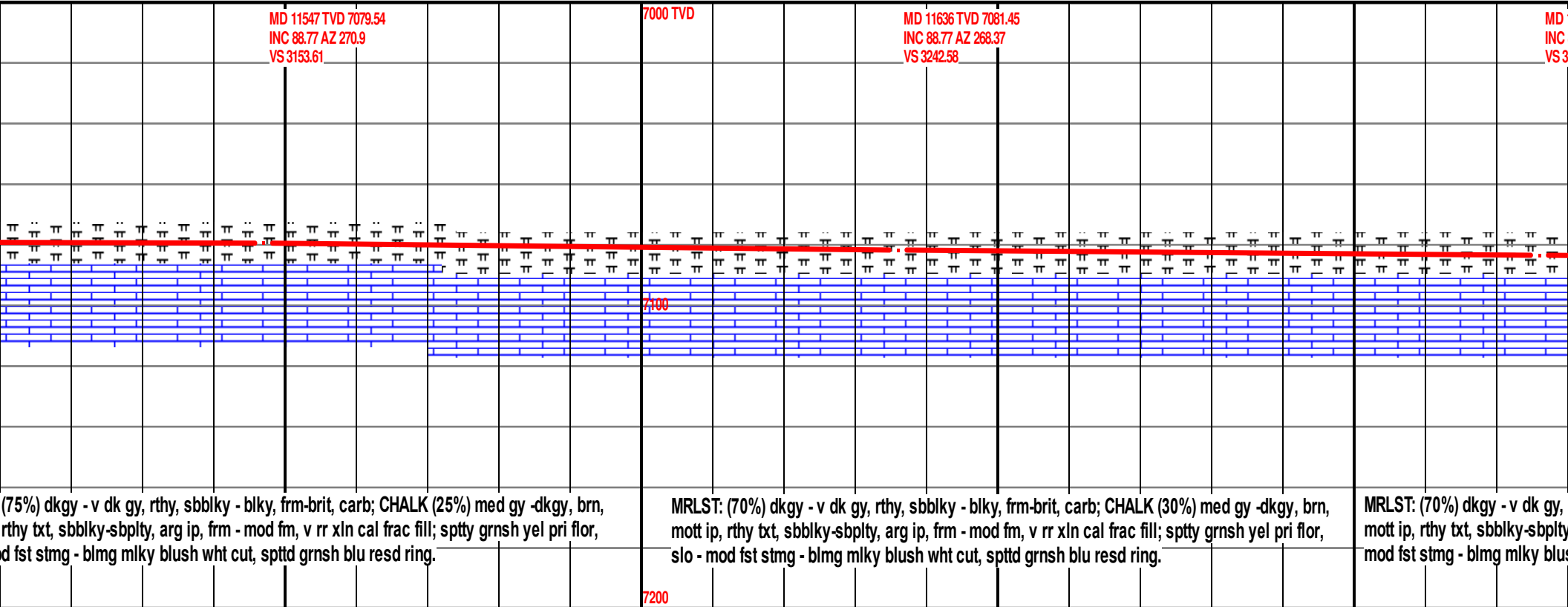
11700

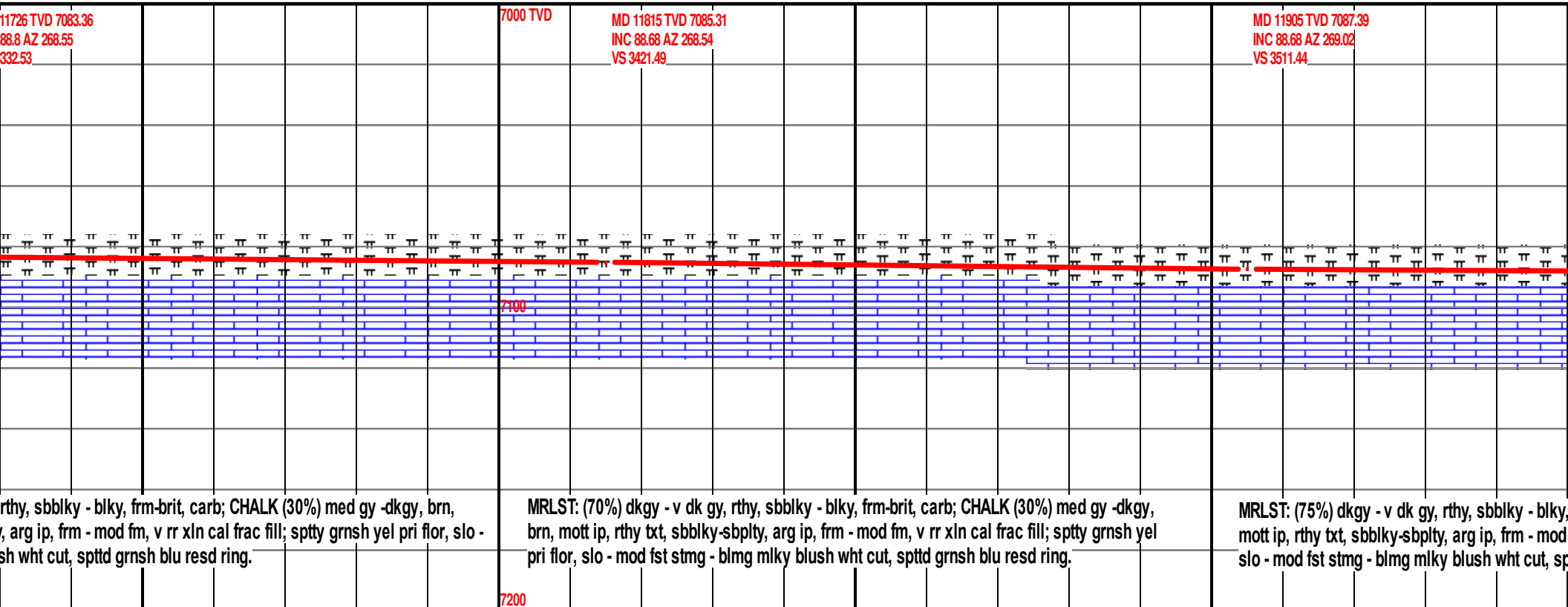
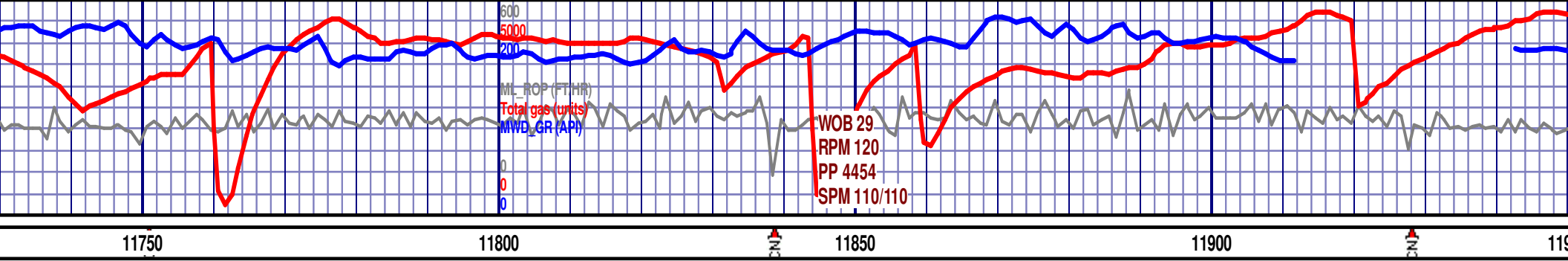
MD 11547 TVD 7079.54
INC 88.77 AZ 270.9
VS 3153.61

7000 TVD

MD 11636 TVD 7081.45
INC 88.77 AZ 268.37
VS 3242.58

MD
INC
VS 3

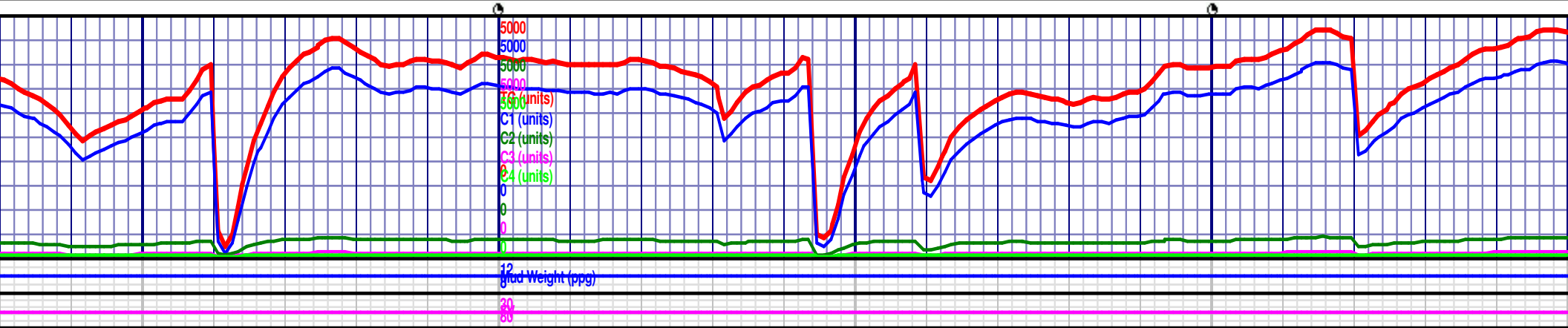


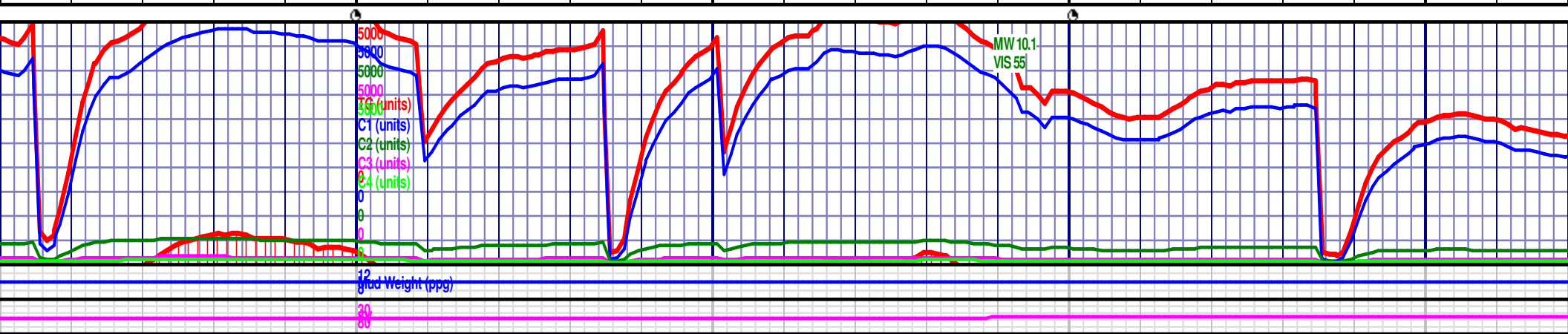
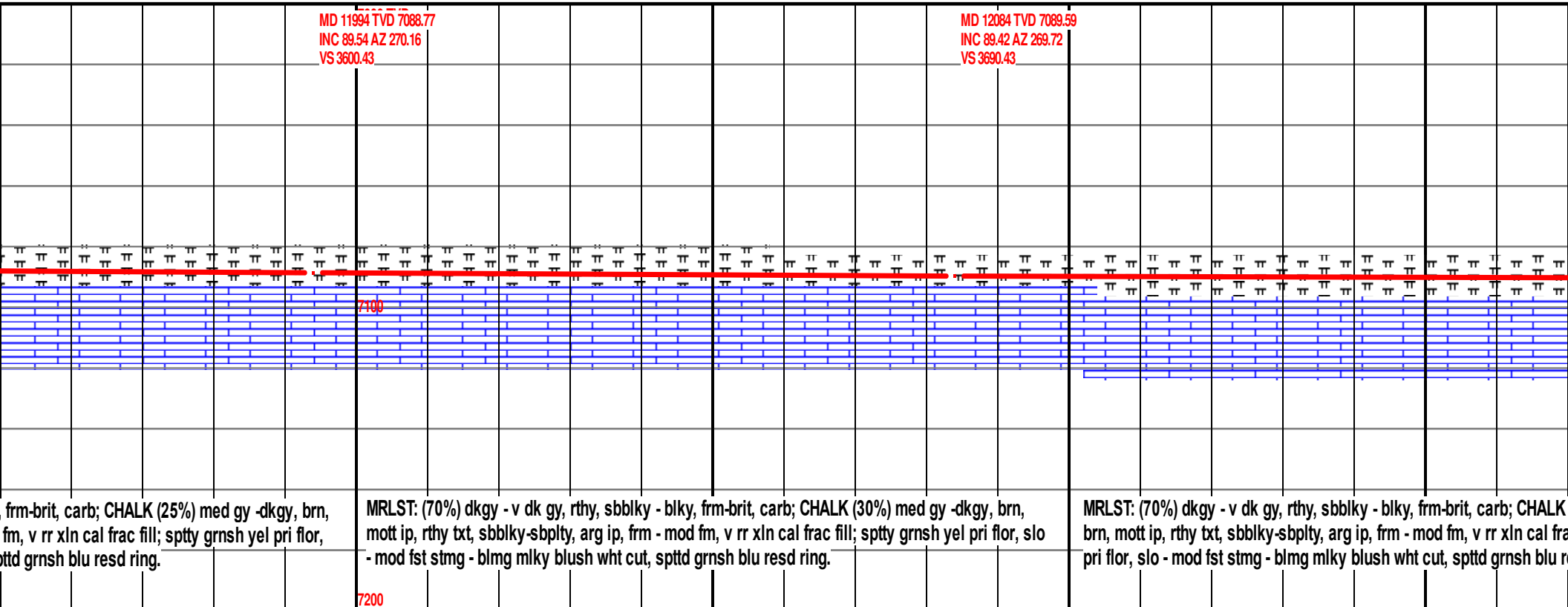


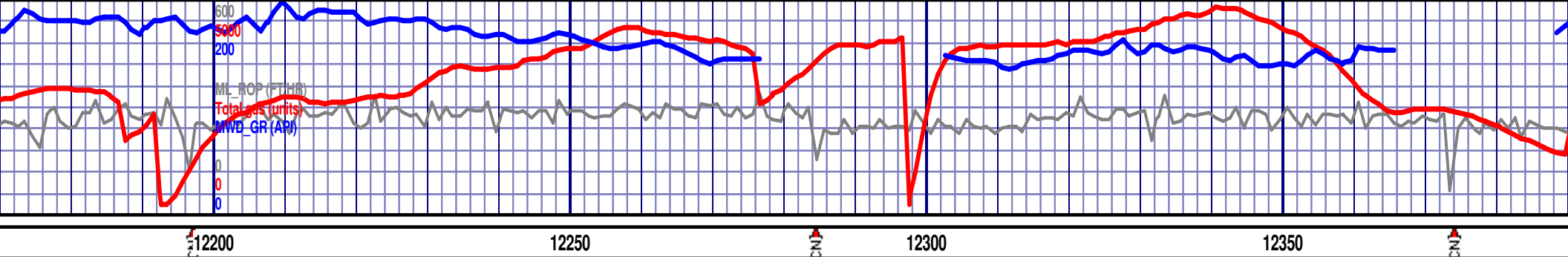
rthy, sbblky - blkgy, frm-brit, carb; CHALK (30%) med gy -dkgy, brn,
r, arg ip, frm - mod fm, v rr xln cal frac fill; sptty grnsh yel pri flor, slo -
sh wht cut, spttd grnsh blu resd ring.

MRLST: (70%) dkgy - v dk gy, rthy, sbblky - blkgy, frm-brit, carb; CHALK (30%) med gy -dkgy,
brn, mott ip, rthy txt, sbblky-sbply, arg ip, frm - mod fm, v rr xln cal frac fill; sptty grnsh yel
pri flor, slo - mod fst stmg - blmg milky blush wht cut, spttd grnsh blu resd ring.

MRLST: (75%) dkgy - v dk gy, rthy, sbblky - blkgy,
mott ip, rthy txt, sbblky-sbply, arg ip, frm - mod
slo - mod fst stmg - blmg milky blush wht cut, sp





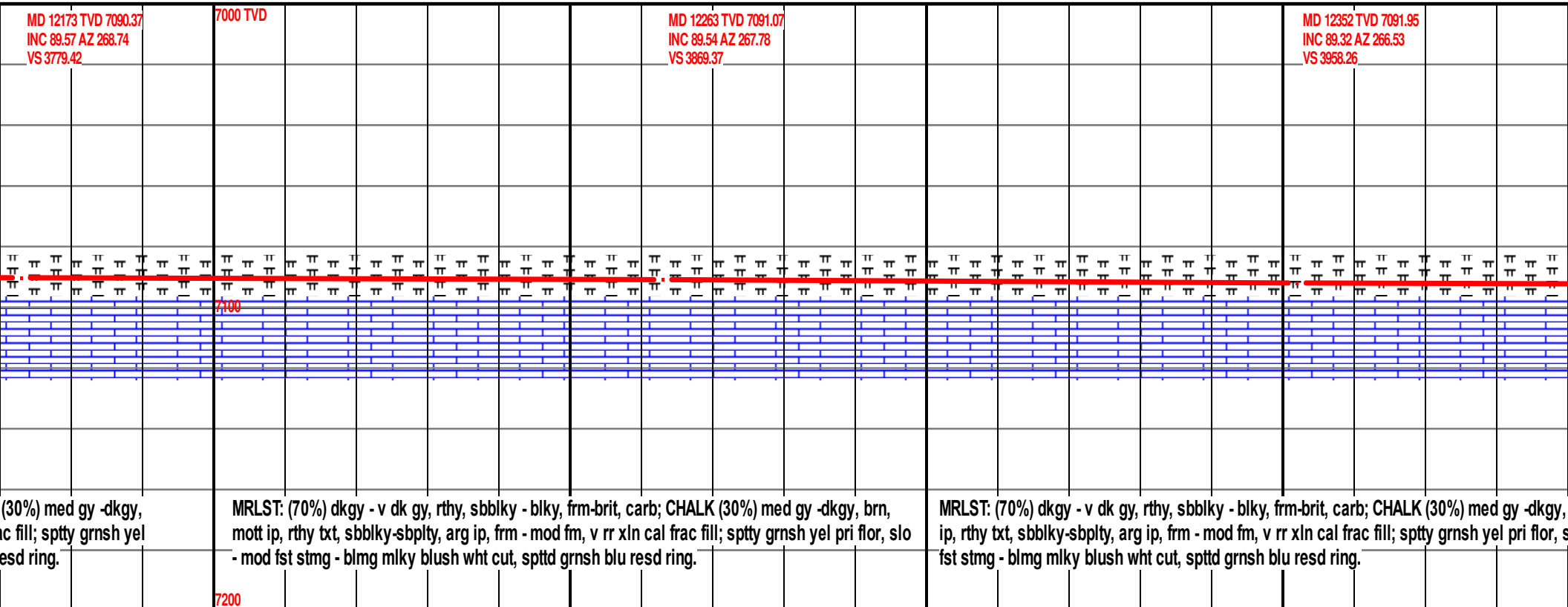


MD 12173 TVD 7090.37
INC 89.57 AZ 268.74
VS 3779.42

7000 TVD

MD 12263 TVD 7091.07
INC 89.54 AZ 267.78
VS 3869.37

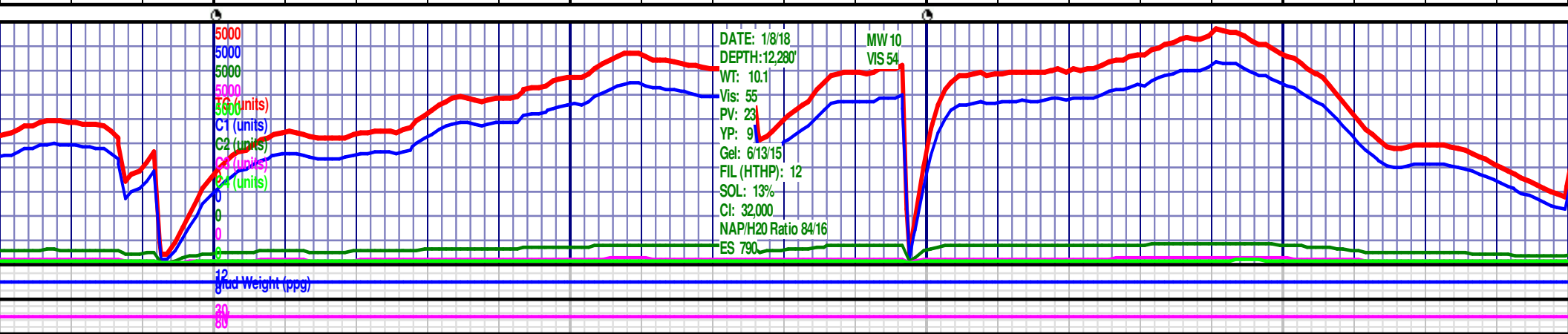
MD 12352 TVD 7091.95
INC 89.32 AZ 266.53
VS 3958.26



(30%) med gy -dkgy,
nc fill; sptty grnsh yel
esd ring.

MRLST: (70%) dkgy - v dk gy, rthy, sbblky - blky, frm-brit, carb; CHALK (30%) med gy -dkgy, brn,
mott ip, rthy txt, sbblky-sbplty, arg ip, frm - mod fm, v rr xln cal frac fill; sptty grnsh yel pri flor, slo
- mod fst stmg - blmg milky blush wht cut, spttd grnsh blu resd ring.

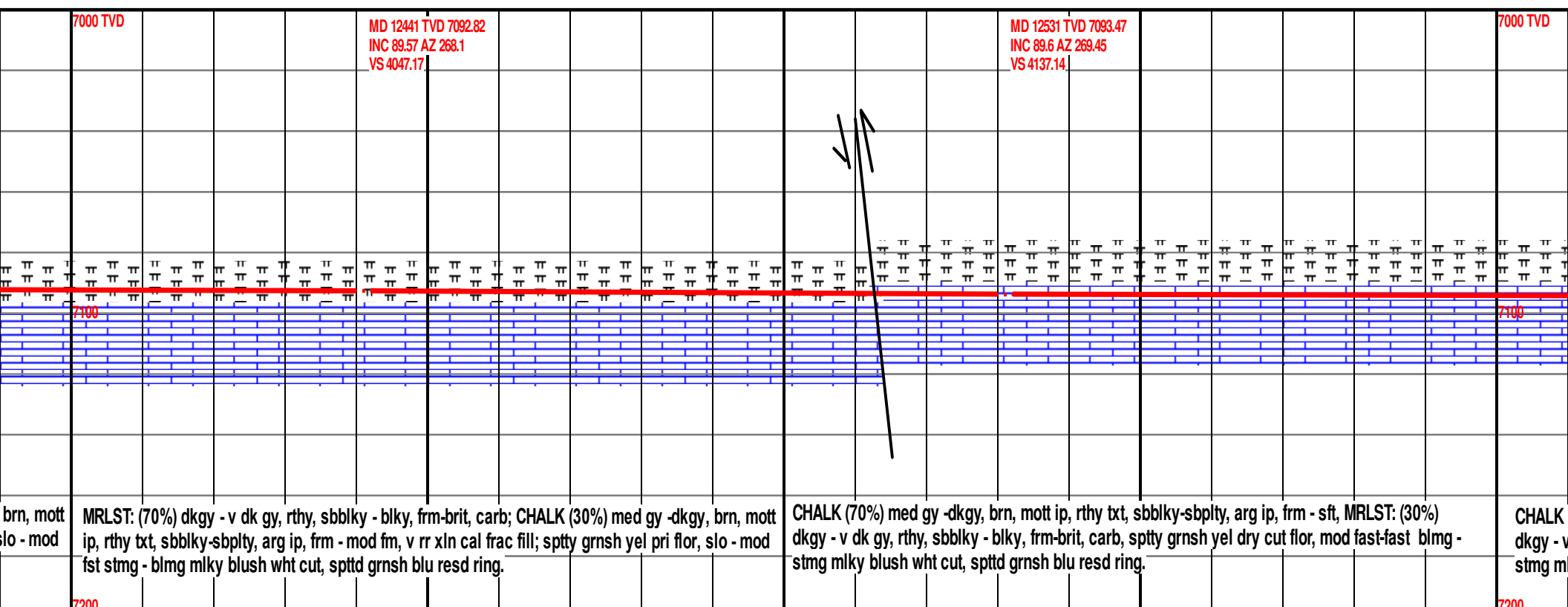
MRLST: (70%) dkgy - v dk gy, rthy, sbblky - blky, frm-brit, carb; CHALK (30%) med gy -dkgy,
ip, rthy txt, sbblky-sbplty, arg ip, frm - mod fm, v rr xln cal frac fill; sptty grnsh yel pri flor, s
fst stmg - blmg milky blush wht cut, spttd grnsh blu resd ring.

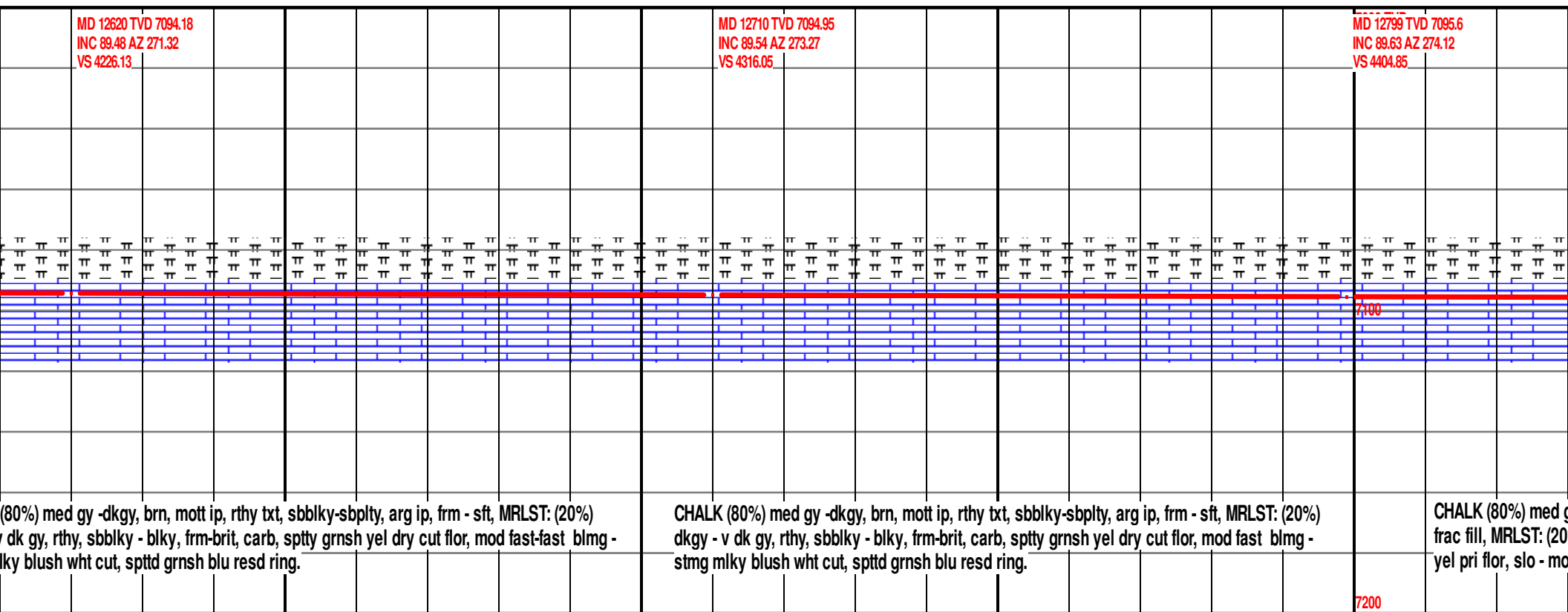


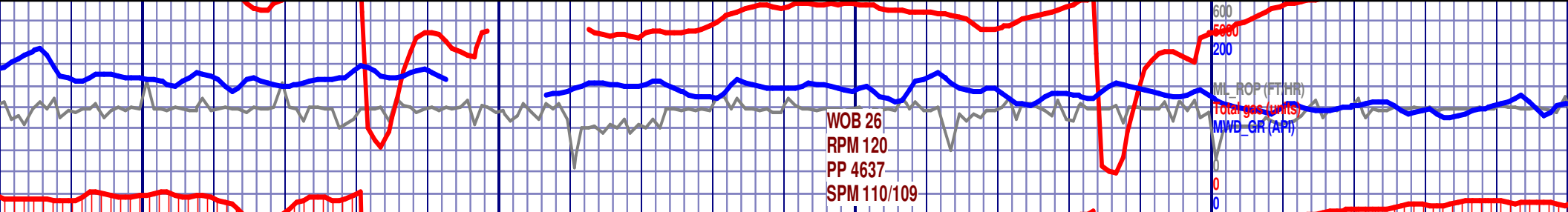
DATE: 1/8/18
DEPTH: 12,280'
WT: 10.1
Vis: 55
PV: 23
YP: 9
Gel: 6/13/15
FIL (HTHP): 12
SOL: 13%
CI: 32,000
NAP/H2O Ratio 84/16
ES 790

MW 10
VIS 54

Grid Weight (ppg)







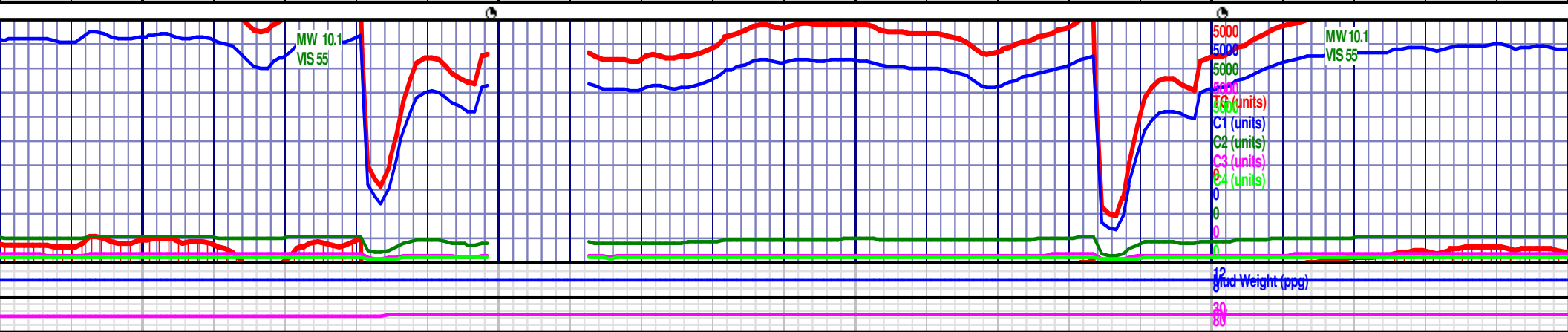
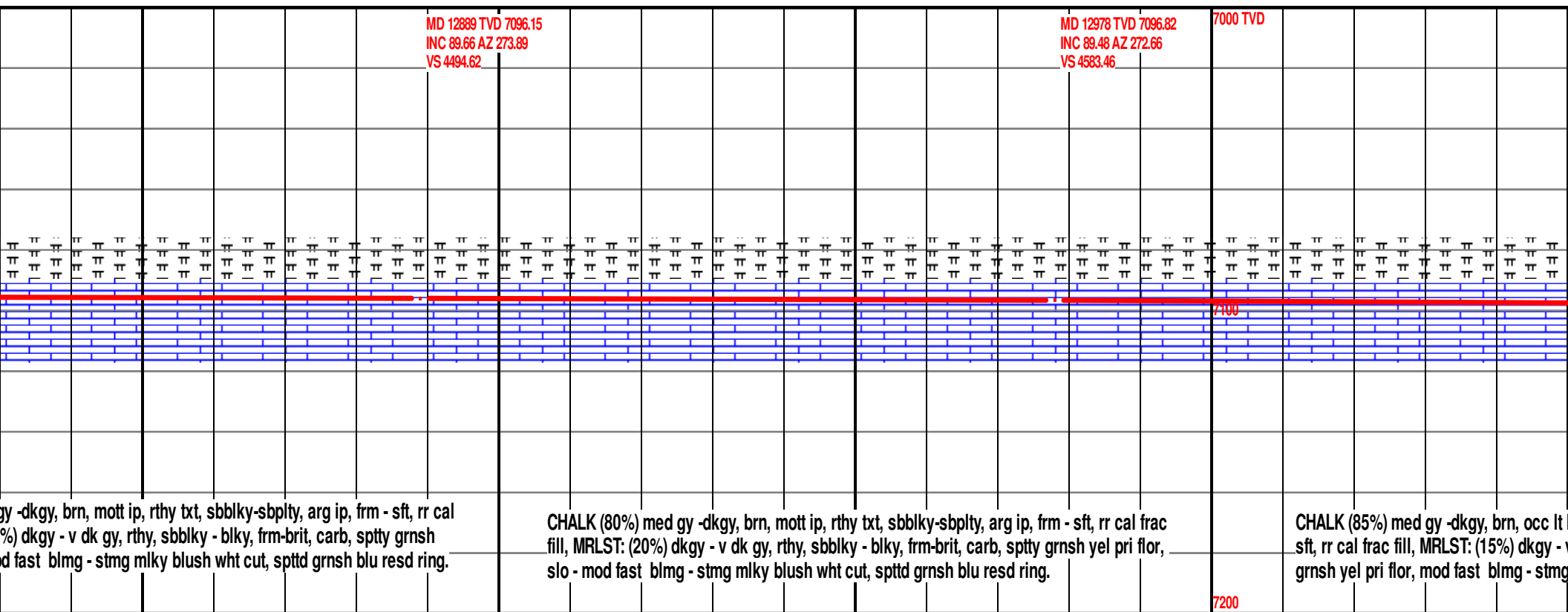
12850

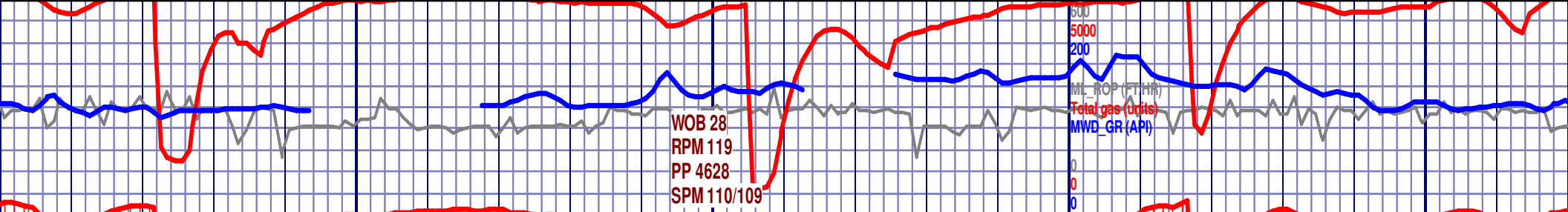
12900

12950

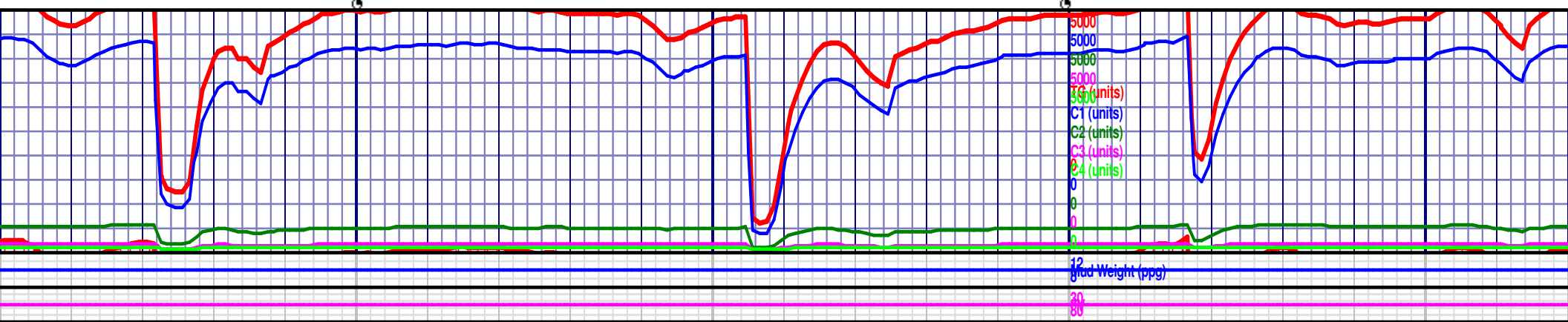
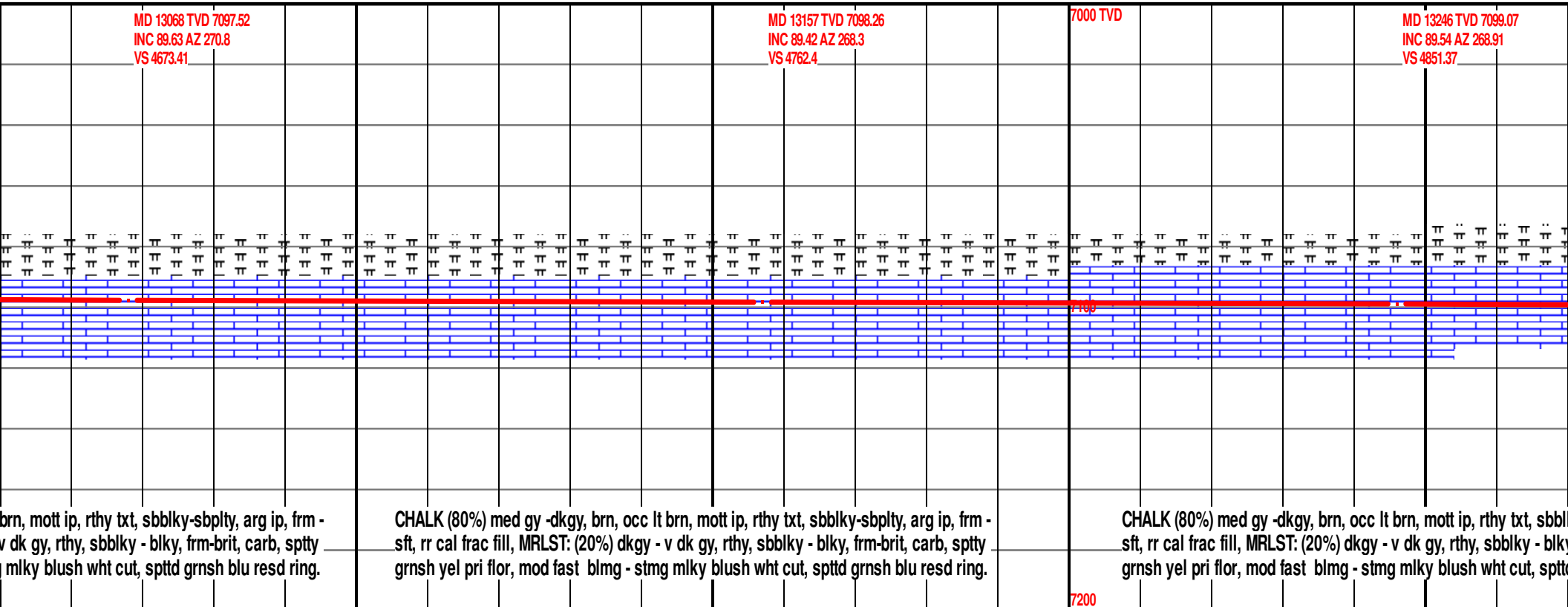
13000

13050





13050 13100 13150 13200 13250





ML_ROP (FT/HR)
Total gas (units)
MWD GR (API)

MD 13410 TVD 7100.31
INC 89.54 AZ 268.97
VS 5015.34

Final survey is a projection to the bit.

Formation Tops

MD TVD SSD

Sharon Springs
Niobrara A Chalk
Niobrara B Chalk

—Target Heel
Target Toe

TD of 13,410' reached @ 0:05 on
1/9/2018

ky-sbplty, arg ip, frm -
y, frm-brit, carb, sptty
d grnsh blu resd ring.

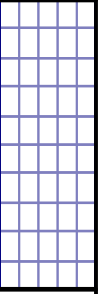
CHALK (80%) med gy -dkgy, brn, occ lt brn, mott ip, rthy txt, sbblky-sbply, arg ip, frm - sft, rr cal frac
fill, MRLST: (20%) dkgy - v dk gy, rthy, sbblky - blky, frm-brit, carb, sppty grnsh yel pri flwr, slo - mod
fast blmg - stmg mlky blush wht cut, spottd grnsh blu resd ring.



5000
TC (units)
5000
C1 (units)
C2 (units)
C3 (units)
C4 (units)

~~12~~
~~grad Weight (ppg)~~

31
814



13

