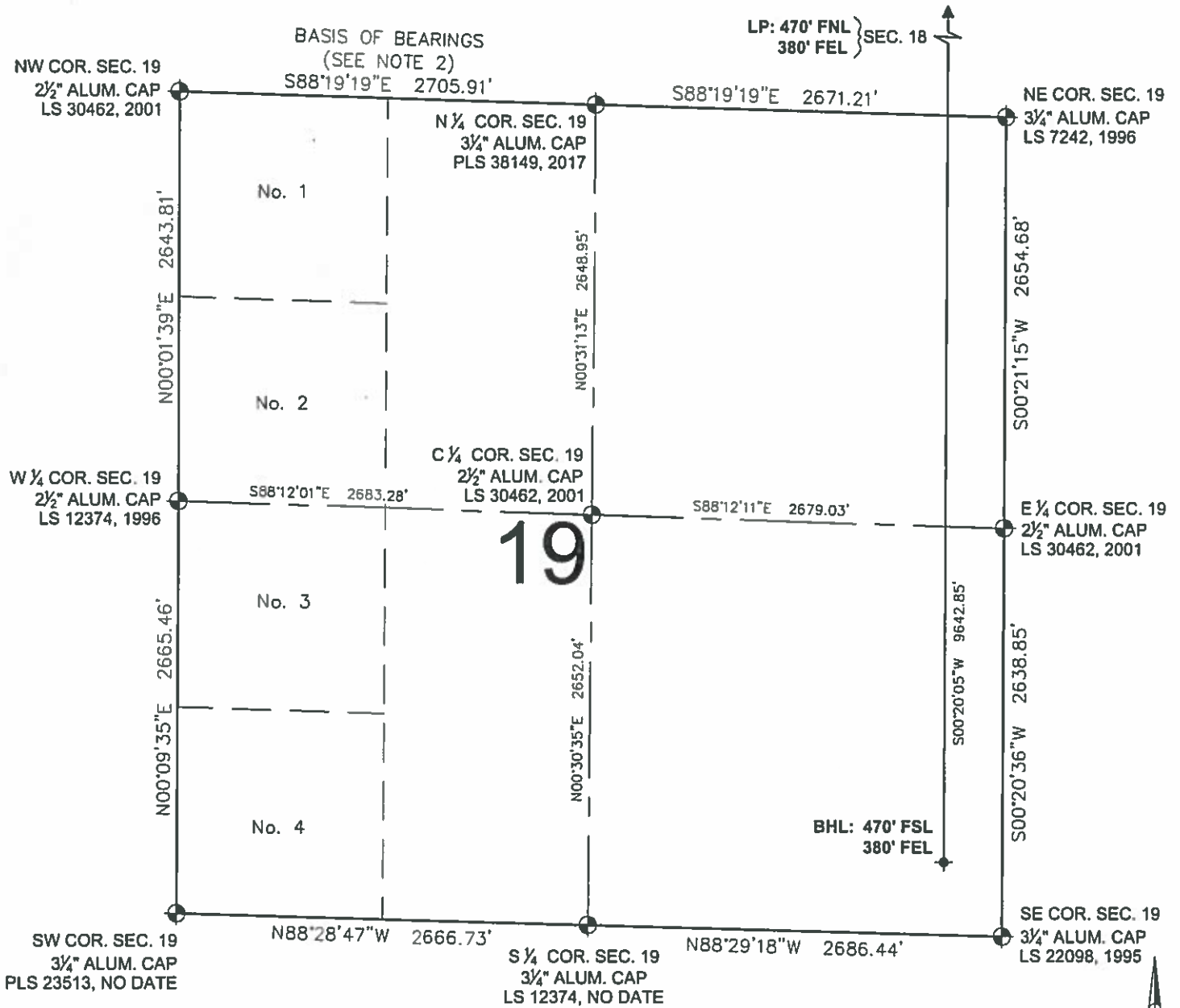




# EAST AULT WA-18-19HN WELL LOCATION CERTIFICATE





## LEGEND

- ⊕ = EXISTING MONUMENT
- = CALCULATED POSITION
- = PROPOSED WELL
- ◆ = EXISTING WELL
- ✦ = BOTTOM HOLE
- ▲ = LANDING POINT
- LP = LANDING POINT
- BHL = BOTTOM HOLE LOCATION

BRIAN C. RITZ, PLS 38452  
COLORADO LICENSED PROFESSIONAL LAND SURVEYOR  
FOR AND ON BEHALF OF P.F.S., LLC  
d.b.a. ASCENT GEOMATICS SOLUTIONS



SHEET 2 OF 2

 <p>7535 Hilltop Circle Denver, CO 80221 (303) 928-7128 www.ascentgeomatics.com</p>	<b>FIELD DATE:</b> 10-19-17 <b>DRAWING DATE:</b> 11-28-17 <b>BY:</b> DP <b>CHECKED:</b> CSG	<b>WELL NAME:</b> EAST AULT WA-18-19HN <b>SURFACE LOCATION:</b> NW 1/4 NE 1/4, SEC. 18, T7N, R65W, 6TH P.M. WELD COUNTY, COLORADO	<b>PREPARED FOR:</b>  <b>BAYSWATER</b> EXPLORATION AND PRODUCTION, LLC
---	--	---	---