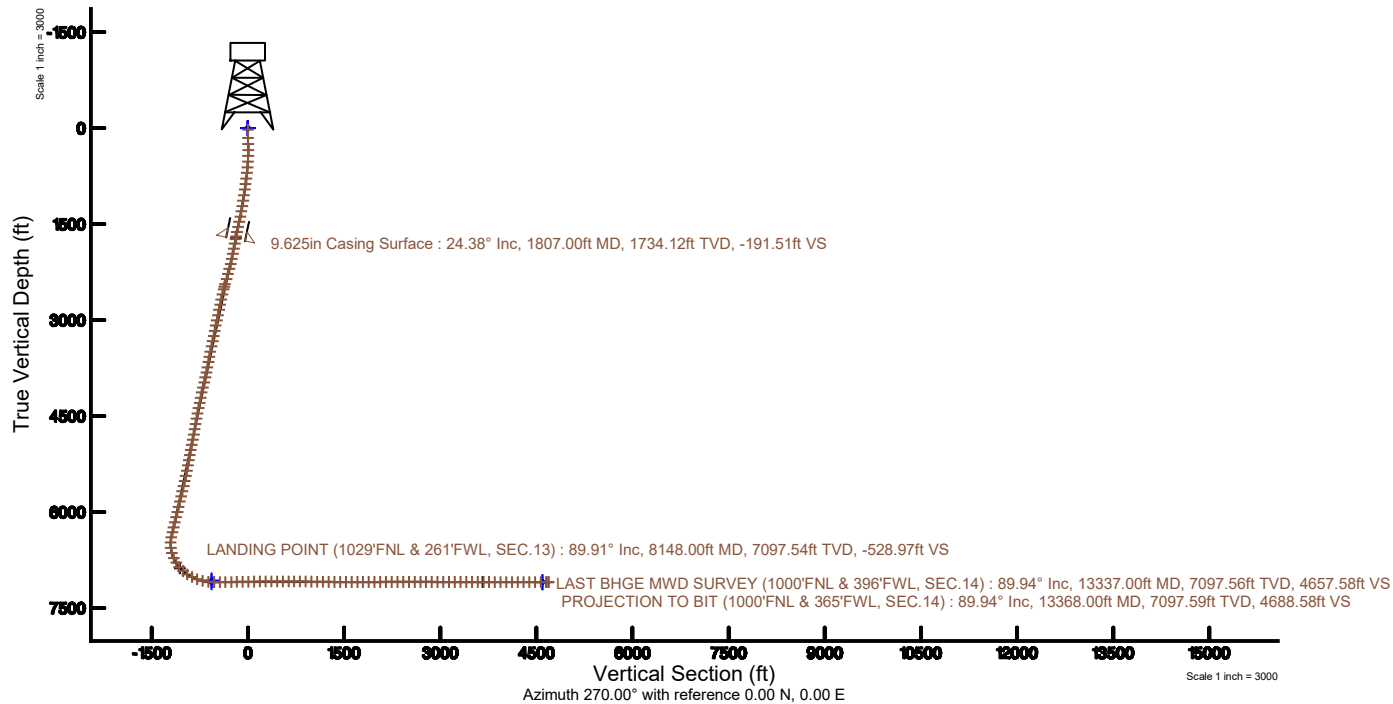
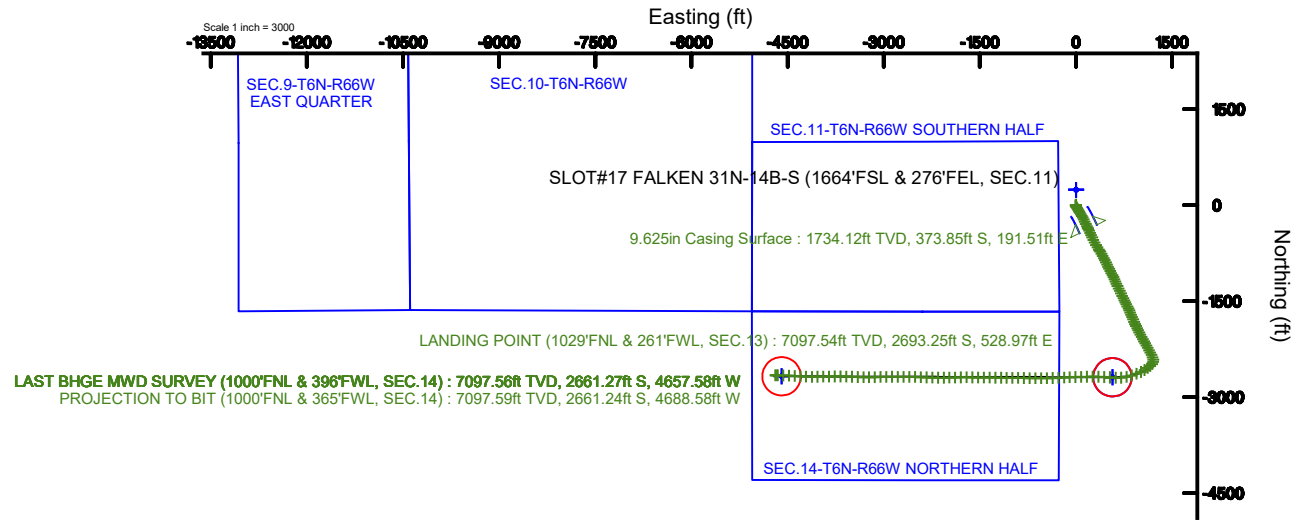


# SRC ENERGY

Location: COLORADO Slot: SLOT#17 FALKEN 31N-14B-S (1664'FSL & 276'FEL, SEC.11)  
 Field: WELD COUNTY (NAD83,TRUE NORTH) Well: FALKEN 31N-14B-S  
 Facility: SEC.11-T06N-R66W Wellbore: FALKEN 31N-14B-S PWB

Plot reference wellpath is FALKEN 31N-14B-S PWB (REV-B.0)	Grid System: NAD83 / Lambert Colorado SP, Northern Zone (501), US feet
True vertical depths are referenced to PRECISION DRILLING 562 (25) (RKB)	* = Wellpath was transformed from a different geodetic datum
Measured depths are referenced to PRECISION DRILLING 562 (25) (RKB)	North Reference: True north
PRECISION DRILLING 562 (25) (RKB) to Mean Sea Level: 4835 feet	Scale: True distance
Mean Sea Level to Mud line (At Slot: SLOT#17 FALKEN 31N-14B-S (1664'FSL & 276'FEL, SEC.11)): 0 feet	Depths are in feet
Coordinates are in feet referenced to Slot	Created by: doddanna on 2018-02-07
	Database: WellArchitectDB



N  
TRUE  
W E

BGGM (1900.0 to 2019.0) Dip: 66.93° Field: 52459.6 nT  
 Magnetic North is 8.36 degrees East of True North (at 8/3/2017)  
 To correct azimuth from Magnetic to True add 8.36 degrees



# Actual Wellpath Report

FALKEN 31N-14B-S AWP

Page 1 of 9



REFERENCE WELLPATH IDENTIFICATION			
Operator	SRC ENERGY	Slot	SLOT#17 FALKEN 31N-14B-S (1664'FSL & 276'FEL, SEC.11)
Area	COLORADO	Well	FALKEN 31N-14B-S
Field	WELD COUNTY (NAD83,TRUE NORTH)	Wellbore	FALKEN 31N-14B-S AWB
Facility	SEC.11-T06N-R66W		

REPORT SETUP INFORMATION			
Projection System	NAD83 / Lambert Colorado SP, Northern Zone (501), US feet	Software System	WellArchitect® 5.0
North Reference	True	User	Doddanna
Scale	0.999966	Report Generated	2/7/2018 at 11:48:42 AM
Convergence at slot	0.49° East	Database/Source file	WellArchitectDB/FALKEN_31N-14B-S_AWP.xml

WELLPATH LOCATION						
	Local coordinates		Grid coordinates		Geographic coordinates	
	North[ft]	East[ft]	Easting[US ft]	Northing[US ft]	Latitude	Longitude
Slot Location	-240.09	-1.95	3212478.33	1425956.16	40°30'00.497"N	104°44'09.427"W
Facility Reference Pt			3212478.20	1426196.25	40°30'02.869"N	104°44'09.402"W
Field Reference Pt			3171284.48	1426358.81	40°30'07.643"N	104°53'02.634"W

WELLPATH DATUM			
Calculation method	Minimum curvature	PRECISION DRILLING 562 (25') (RKB) to Facility Vertical Datum	4835.00ft
Horizontal Reference Pt	Slot	PRECISION DRILLING 562 (25') (RKB) to Mean Sea Level	4835.00ft
Vertical Reference Pt	PRECISION DRILLING 562 (25') (RKB)	PRECISION DRILLING 562 (25') (RKB) to Mud Line at Slot (SLOT#17 FALKEN 31N-14B-S (1664'FSL & 276'FEL, SEC.11))	4835.00ft
MD Reference Pt	PRECISION DRILLING 562 (25') (RKB)	Section Origin	N 0.00, E 0.00 ft
Field Vertical Reference	Mean Sea Level	Section Azimuth	270.00°



SRC ENERGY

# Actual Wellpath Report

FALKEN 31N-14B-S AWP

Page 2 of 9



## REFERENCE WELLPATH IDENTIFICATION

Operator	SRC ENERGY	Slot	SLOT#17 FALKEN 31N-14B-S (1664'FSL & 276'FEL, SEC.11)
Area	COLORADO	Well	FALKEN 31N-14B-S
Field	WELD COUNTY (NAD83,TRUE NORTH)	Wellbore	FALKEN 31N-14B-S AWB
Facility	SEC.11-T06N-R66W		

## WELLPATH DATA (152 stations) † = interpolated/extrapolated station

MD [ft]	Inclination [°]	Azimuth [°]	TVD [ft]	Vert Sect [ft]	North [ft]	East [ft]	DLS [°/100ft]	Comments
0.00†	0.000	259.400	0.00	0.00	0.00	0.00	0.00	
25.00	0.000	259.400	25.00	0.00	0.00	0.00	0.00	
153.00	1.680	259.400	152.98	1.84	-0.35	-1.84	1.31	
247.00	1.640	220.390	246.95	4.07	-1.62	-4.07	1.18	
342.00	2.210	188.390	341.89	5.22	-4.47	-5.22	1.26	
436.00	4.430	159.830	435.74	4.23	-9.67	-4.23	2.88	
526.00	7.180	150.450	525.27	0.26	-17.83	-0.26	3.22	
614.00	9.720	148.990	612.31	-6.28	-28.98	6.28	2.90	
704.00	11.450	145.560	700.77	-15.25	-42.86	15.25	2.04	
793.00	13.320	148.670	787.70	-25.58	-58.91	25.58	2.23	
883.00	14.420	150.050	875.07	-36.56	-77.47	36.56	1.28	
972.00	15.670	148.100	961.02	-48.45	-97.28	48.45	1.52	
1061.00	17.000	148.050	1046.43	-61.68	-118.52	61.68	1.49	
1151.00	18.130	150.490	1132.23	-75.54	-141.88	75.54	1.50	
1240.00	19.710	151.280	1216.42	-89.58	-167.09	89.58	1.80	
1330.00	21.560	153.250	1300.64	-104.32	-195.17	104.32	2.20	
1419.00	23.550	153.890	1382.83	-119.50	-225.74	119.50	2.25	
1509.00	25.050	153.700	1464.85	-135.86	-258.97	135.86	1.67	
1598.00	26.050	153.990	1545.15	-152.78	-293.42	152.78	1.13	
1688.00	25.500	154.400	1626.20	-169.81	-328.66	169.81	0.64	
1761.00	24.770	154.510	1692.28	-183.18	-356.63	183.18	1.00	
1883.00	23.740	152.740	1803.51	-205.43	-401.53	205.43	1.03	
1972.00	24.030	156.220	1884.89	-220.95	-434.04	220.95	1.62	
2061.00	26.200	157.500	1965.48	-235.77	-468.78	235.77	2.51	
2151.00	28.200	156.540	2045.52	-251.84	-506.65	251.84	2.28	
2240.00	29.410	154.570	2123.51	-269.60	-545.67	269.60	1.73	
2330.00	29.930	150.150	2201.72	-290.27	-585.11	290.27	2.50	
2419.00	27.950	148.680	2279.60	-312.16	-622.19	312.16	2.36	
2509.00	27.540	147.990	2359.25	-334.16	-657.85	334.16	0.58	
2599.00	27.120	148.300	2439.21	-355.96	-692.95	355.96	0.49	



SRC ENERGY

# Actual Wellpath Report

FALKEN 31N-14B-S AWP

Page 3 of 9



## REFERENCE WELLPATH IDENTIFICATION

Operator	SRC ENERGY	Slot	SLOT#17 FALKEN 31N-14B-S (1664'FSL & 276'FEL, SEC.11)
Area	COLORADO	Well	FALKEN 31N-14B-S
Field	WELD COUNTY (NAD83,TRUE NORTH)	Wellbore	FALKEN 31N-14B-S AWB
Facility	SEC.11-T06N-R66W		

## WELLPATH DATA (152 stations)

MD [ft]	Inclination [°]	Azimuth [°]	TVD [ft]	Vert Sect [ft]	North [ft]	East [ft]	DLS [°/100ft]	Comments
2643.00	26.700	147.370	2478.44	-366.56	-709.80	366.56	1.35	
2688.00	26.330	147.600	2518.71	-377.36	-726.74	377.36	0.85	
2778.00	25.770	151.350	2599.57	-397.44	-760.77	397.44	1.93	
2867.00	25.150	150.540	2679.93	-416.02	-794.21	416.02	0.80	
2957.00	25.180	153.620	2761.39	-433.93	-828.02	433.93	1.46	
3046.00	25.060	153.740	2841.97	-450.68	-861.88	450.68	0.15	
3136.00	25.290	153.600	2923.42	-467.66	-896.20	467.66	0.26	
3225.00	24.680	153.230	3004.09	-484.48	-929.81	484.48	0.71	
3315.00	23.770	153.240	3086.17	-501.11	-962.79	501.11	1.01	
3404.00	25.060	154.640	3167.21	-517.26	-995.84	517.26	1.59	
3494.00	24.500	154.780	3248.92	-533.38	-1029.94	533.38	0.63	
3583.00	25.170	151.150	3329.70	-550.38	-1063.22	550.38	1.87	
3673.00	23.750	149.870	3411.62	-568.71	-1095.66	568.71	1.68	
3762.00	22.950	152.340	3493.33	-585.76	-1126.53	585.76	1.42	
3852.00	23.860	156.600	3575.93	-601.14	-1158.78	601.14	2.13	
3941.00	25.360	158.190	3656.84	-615.37	-1193.00	615.37	1.84	
4031.00	26.730	156.090	3737.70	-630.73	-1229.40	630.73	1.83	
4121.00	27.280	155.350	3817.89	-647.54	-1266.64	647.54	0.72	
4210.00	27.810	154.940	3896.80	-664.84	-1303.99	664.84	0.63	
4300.00	28.380	154.300	3976.20	-683.01	-1342.28	683.01	0.72	
4389.00	29.100	153.420	4054.23	-701.87	-1380.70	701.87	0.94	
4478.00	27.850	154.340	4132.46	-720.55	-1418.79	720.55	1.49	
4568.00	24.740	154.190	4213.14	-737.86	-1454.70	737.86	3.46	
4657.00	23.690	153.570	4294.31	-753.93	-1487.48	753.93	1.21	
4747.00	22.900	152.910	4376.97	-769.95	-1519.26	769.95	0.92	
4836.00	24.120	154.050	4458.58	-785.79	-1551.03	785.79	1.46	
4926.00	23.480	153.140	4540.93	-801.94	-1583.56	801.94	0.82	
5015.00	22.240	153.450	4622.94	-817.48	-1614.44	817.48	1.40	
5105.00	22.500	157.640	4706.17	-831.64	-1645.61	831.64	1.79	
5194.00	23.670	156.990	4788.04	-845.11	-1677.80	845.11	1.35	



SRC ENERGY

# Actual Wellpath Report

FALKEN 31N-14B-S AWP

Page 4 of 9



## REFERENCE WELLPATH IDENTIFICATION

Operator	SRC ENERGY	Slot	SLOT#17 FALKEN 31N-14B-S (1664'FSL & 276'FEL, SEC.11)
Area	COLORADO	Well	FALKEN 31N-14B-S
Field	WELD COUNTY (NAD83,TRUE NORTH)	Wellbore	FALKEN 31N-14B-S AWB
Facility	SEC.11-T06N-R66W		

## WELLPATH DATA (152 stations)

MD [ft]	Inclination [°]	Azimuth [°]	TVD [ft]	Vert Sect [ft]	North [ft]	East [ft]	DLS [°/100ft]	Comments
5284.00	26.210	157.030	4869.64	-859.93	-1712.74	859.93	2.82	
5373.00	26.760	157.420	4949.30	-875.29	-1749.33	875.29	0.65	
5463.00	26.880	157.190	5029.62	-890.96	-1786.79	890.96	0.18	
5552.00	26.630	157.240	5109.09	-906.47	-1823.73	906.47	0.28	
5642.00	24.800	155.970	5190.18	-921.96	-1859.58	921.96	2.12	
5731.00	22.300	154.480	5271.76	-936.84	-1891.87	936.84	2.89	
5821.00	23.130	152.380	5354.78	-952.40	-1922.94	952.40	1.29	
5910.00	25.560	152.870	5435.86	-969.26	-1955.52	969.26	2.74	
6000.00	25.420	152.560	5517.10	-987.01	-1989.94	987.01	0.21	
6089.00	27.030	153.290	5596.93	-1004.91	-2024.96	1004.91	1.84	
6179.00	27.530	152.220	5676.92	-1023.79	-2061.64	1023.79	0.78	
6268.00	25.200	149.670	5756.66	-1042.95	-2096.19	1042.95	2.91	
6358.00	25.280	151.300	5838.07	-1061.85	-2129.59	1061.85	0.78	
6448.00	24.190	150.010	5919.81	-1080.30	-2162.42	1080.30	1.35	
6537.00	26.990	150.160	6000.08	-1099.47	-2195.73	1099.47	3.15	
6627.00	27.880	150.410	6079.95	-1120.02	-2231.75	1120.02	1.00	
6716.00	27.500	151.580	6158.76	-1140.08	-2267.91	1140.08	0.75	
6806.00	27.730	154.100	6238.51	-1159.11	-2305.03	1159.11	1.32	
6895.00	27.780	154.080	6317.27	-1177.22	-2342.31	1177.22	0.06	
6985.00	27.550	154.790	6396.98	-1195.25	-2380.00	1195.25	0.45	
7074.00	23.730	173.100	6477.33	-1206.19	-2416.47	1206.19	9.83	
7164.00	23.820	195.390	6559.86	-1203.54	-2452.04	1203.54	9.93	
7253.00	26.610	218.420	6640.57	-1186.34	-2485.07	1186.34	11.39	
7343.00	30.870	228.820	6719.51	-1156.40	-2516.10	1156.40	7.28	
7432.00	36.500	234.130	6793.55	-1117.73	-2546.68	1117.73	7.13	
7522.00	43.480	239.350	6862.49	-1069.33	-2578.20	1069.33	8.60	
7611.00	50.490	245.120	6923.19	-1011.74	-2608.30	1011.74	9.19	
7701.00	58.070	249.190	6975.71	-944.43	-2636.52	944.43	9.18	
7790.00	65.280	250.980	7017.91	-870.81	-2663.15	870.81	8.29	
7880.00	70.810	257.120	7051.58	-790.61	-2685.98	790.61	8.82	



SRC ENERGY

# Actual Wellpath Report

FALKEN 31N-14B-S AWP

Page 5 of 9



## REFERENCE WELLPATH IDENTIFICATION

Operator	SRC ENERGY	Slot	SLOT#17 FALKEN 31N-14B-S (1664'FSL & 276'FEL, SEC.11)
Area	COLORADO	Well	FALKEN 31N-14B-S
Field	WELD COUNTY (NAD83,TRUE NORTH)	Wellbore	FALKEN 31N-14B-S AWB
Facility	SEC.11-T06N-R66W		

## WELLPATH DATA (152 stations)

MD [ft]	Inclination [°]	Azimuth [°]	TVD [ft]	Vert Sect [ft]	North [ft]	East [ft]	DLS [°/100ft]	Comments
7969.00	76.490	266.910	7076.68	-706.17	-2697.72	706.17	12.33	
8059.00	83.430	272.640	7092.37	-617.64	-2698.02	617.64	9.94	
8148.00	89.910	273.510	7097.54	-528.97	-2693.25	528.97	7.35	LANDING POINT (1029'FNL & 261'FWL, SEC.13)
8238.00	90.030	273.800	7097.58	-439.15	-2687.52	439.15	0.35	
8327.00	91.140	271.710	7096.68	-350.27	-2683.24	350.27	2.66	
8417.00	91.140	269.660	7094.88	-260.30	-2682.16	260.30	2.28	
8506.00	91.140	268.920	7093.11	-171.32	-2683.27	171.32	0.83	
8596.00	90.950	268.320	7091.47	-81.36	-2685.43	81.36	0.70	
8685.00	90.370	268.710	7090.45	7.60	-2687.74	-7.60	0.79	
8775.00	90.890	267.710	7089.46	97.55	-2690.55	-97.55	1.25	
8864.00	91.020	266.780	7087.97	186.43	-2694.83	-186.43	1.05	
8954.00	91.050	267.100	7086.35	276.29	-2699.63	-276.29	0.36	
9043.00	89.880	268.120	7085.63	365.21	-2703.34	-365.21	1.74	
9133.00	90.000	268.950	7085.72	455.18	-2705.64	-455.18	0.93	
9222.00	89.780	269.240	7085.89	544.17	-2707.05	-544.17	0.41	
9312.00	89.690	270.790	7086.31	634.16	-2707.03	-634.16	1.73	
9401.00	90.250	271.770	7086.35	723.14	-2705.04	-723.14	1.27	
9490.00	89.260	271.440	7086.74	812.10	-2702.55	-812.10	1.17	
9580.00	89.110	270.840	7088.02	902.07	-2700.75	-902.07	0.69	
9669.00	88.980	270.630	7089.50	991.05	-2699.61	-991.05	0.28	
9759.00	88.920	270.570	7091.15	1081.03	-2698.67	-1081.03	0.09	
9848.00	88.800	270.340	7092.92	1170.01	-2697.96	-1170.01	0.29	
9938.00	90.120	270.430	7093.77	1260.01	-2697.36	-1260.01	1.47	
10027.00	89.720	270.290	7093.89	1349.00	-2696.80	-1349.00	0.48	
10116.00	90.120	270.430	7094.02	1438.00	-2696.24	-1438.00	0.48	
10206.00	90.030	271.090	7093.90	1527.99	-2695.05	-1527.99	0.74	
10295.00	89.720	271.100	7094.09	1616.98	-2693.35	-1616.98	0.35	
10385.00	90.060	270.590	7094.26	1706.97	-2692.02	-1706.97	0.68	
10474.00	89.780	268.740	7094.39	1795.96	-2692.54	-1795.96	2.10	
10563.00	90.280	268.620	7094.34	1884.94	-2694.59	-1884.94	0.58	



SRC ENERGY

# Actual Wellpath Report

FALKEN 31N-14B-S AWP

Page 6 of 9



## REFERENCE WELLPATH IDENTIFICATION

Operator	SRC ENERGY	Slot	SLOT#17 FALKEN 31N-14B-S (1664'FSL & 276'FEL, SEC.11)
Area	COLORADO	Well	FALKEN 31N-14B-S
Field	WELD COUNTY (NAD83,TRUE NORTH)	Wellbore	FALKEN 31N-14B-S AWB
Facility	SEC.11-T06N-R66W		

## WELLPATH DATA (152 stations)

MD [ft]	Inclination [°]	Azimuth [°]	TVD [ft]	Vert Sect [ft]	North [ft]	East [ft]	DLS [°/100ft]	Comments
10653.00	90.060	268.340	7094.08	1974.90	-2696.98	-1974.90	0.40	
10742.00	90.220	269.660	7093.86	2063.89	-2698.53	-2063.89	1.49	
10832.00	90.030	271.070	7093.66	2153.88	-2697.96	-2153.88	1.58	
10921.00	90.150	271.770	7093.52	2242.86	-2695.75	-2242.86	0.80	
11011.00	89.970	271.660	7093.43	2332.82	-2693.06	-2332.82	0.23	
11100.00	89.850	272.000	7093.57	2421.77	-2690.22	-2421.77	0.41	
11190.00	90.220	272.070	7093.51	2511.71	-2687.02	-2511.71	0.42	
11279.00	89.850	270.330	7093.46	2600.69	-2685.16	-2600.69	2.00	
11369.00	89.940	270.450	7093.62	2690.69	-2684.54	-2690.69	0.17	
11458.00	89.910	270.540	7093.74	2779.69	-2683.77	-2779.69	0.11	
11548.00	90.000	269.720	7093.81	2869.68	-2683.57	-2869.68	0.92	
11638.00	89.940	268.930	7093.86	2959.68	-2684.63	-2959.68	0.88	
11727.00	90.000	268.530	7093.90	3048.65	-2686.60	-3048.65	0.45	
11816.00	89.820	268.330	7094.04	3137.62	-2689.04	-3137.62	0.30	
11906.00	90.000	268.370	7094.18	3227.58	-2691.63	-3227.58	0.20	
11995.00	90.150	272.000	7094.07	3316.57	-2691.35	-3316.57	4.08	
12084.00	90.000	273.070	7093.95	3405.48	-2687.41	-3405.48	1.21	
12174.00	89.970	272.360	7093.98	3495.38	-2683.15	-3495.38	0.79	
12263.00	90.090	272.090	7093.93	3584.31	-2679.69	-3584.31	0.33	
12353.00	89.720	270.830	7094.08	3674.28	-2677.40	-3674.28	1.46	
12442.00	89.940	269.090	7094.34	3763.28	-2677.46	-3763.28	1.97	
12532.00	89.780	269.210	7094.56	3853.27	-2678.80	-3853.27	0.22	
12621.00	89.510	269.280	7095.11	3942.26	-2679.97	-3942.26	0.31	
12711.00	89.510	267.600	7095.88	4032.22	-2682.42	-4032.22	1.87	
12800.00	90.120	269.770	7096.17	4121.19	-2684.46	-4121.19	2.53	
12890.00	89.630	273.320	7096.37	4211.14	-2682.03	-4211.14	3.98	
12979.00	89.820	273.830	7096.79	4299.96	-2676.48	-4299.96	0.61	
13069.00	89.940	273.320	7096.98	4389.79	-2670.87	-4389.79	0.58	
13158.00	89.780	272.730	7097.20	4478.66	-2666.18	-4478.66	0.69	
13248.00	89.910	271.740	7097.44	4568.59	-2662.67	-4568.59	1.11	



SRC ENERGY

# Actual Wellpath Report

FALKEN 31N-14B-S AWP

Page 7 of 9



## REFERENCE WELLPATH IDENTIFICATION

Operator	SRC ENERGY	Slot	SLOT#17 FALKEN 31N-14B-S (1664'FSL & 276'FEL, SEC.11)
Area	COLORADO	Well	FALKEN 31N-14B-S
Field	WELD COUNTY (NAD83,TRUE NORTH)	Wellbore	FALKEN 31N-14B-S AWB
Facility	SEC.11-T06N-R66W		

## WELLPATH DATA (152 stations)

MD [ft]	Inclination [°]	Azimuth [°]	TVD [ft]	Vert Sect [ft]	North [ft]	East [ft]	DLS [°/100ft]	Comments
13337.00	89.940	270.060	7097.56	4657.58	-2661.27	-4657.58	1.89	LAST BHGE MWD SURVEY (1000'FNL & 396'FWL, SEC.14)
13368.00	89.940	270.060	7097.59	4688.58	-2661.24	-4688.58	0.00	PROJECTION TO BIT (1000'FNL & 365'FWL, SEC.14)

## HOLE & CASING SECTIONS - Ref Wellbore: FALKEN 31N-14B-S AWB Ref Wellpath: FALKEN 31N-14B-S AWP

String/Diameter	Start MD [ft]	End MD [ft]	Interval [ft]	Start TVD [ft]	End TVD [ft]	Start N/S [ft]	Start E/W [ft]	End N/S [ft]	End E/W [ft]
13.5in Open Hole	25.00	1807.00	1782.00	25.00	1734.12	0.00	0.00	-373.85	191.51
9.625in Casing Surface	25.00	1807.00	1782.00	25.00	1734.12	0.00	0.00	-373.85	191.51
8.5in Open Hole	1807.00	13368.00	11561.00	1734.12	7097.59	-373.85	191.51	-2661.24	-4688.58





SRC ENERGY

# Actual Wellpath Report

FALKEN 31N-14B-S AWP

Page 8 of 9



## REFERENCE WELLPATH IDENTIFICATION

Operator	SRC ENERGY	Slot	SLOT#17 FALKEN 31N-14B-S (1664'FSL & 276'FEL, SEC.11)
Area	COLORADO	Well	FALKEN 31N-14B-S
Field	WELD COUNTY (NAD83,TRUE NORTH)	Wellbore	FALKEN 31N-14B-S AWB
Facility	SEC.11-T06N-R66W		

## TARGETS

Name	TVD [ft]	North [ft]	East [ft]	Grid East [US ft]	Grid North [US ft]	Latitude	Longitude	Shape
SEC.10-T6N-R66W	0.00	240.09	1.95	3212478.20	1426196.25	40°30'02.869"N	104°44'09.402"W	polygon
SEC.11-T6N-R66W SOUTHERN HALF	0.00	240.09	1.95	3212478.20	1426196.25	40°30'02.869"N	104°44'09.402"W	polygon
SEC.14-T6N-R66W NORTHERN HALF	0.00	240.09	1.95	3212478.20	1426196.25	40°30'02.869"N	104°44'09.402"W	polygon
SEC.9-T6N-R66W EAST QUARTER	0.00	240.09	1.95	3212478.20	1426196.25	40°30'02.869"N	104°44'09.402"W	polygon
FAKLEN 31N-14B-S TOP OF PROD ON PLAT (1027'FNL & 300'FWL, SEC.13)	7070.00	-2690.85	568.52	3213069.98	1423270.41	40°29'33.907"N	104°44'02.069"W	circle
FALKEN 31N-14B-S TOP OF PROD REV-2 (1027'FNL & 300'FWL, SEC.13)	7095.80	-2690.85	568.52	3213069.99	1423270.41	40°29'33.907"N	104°44'02.069"W	circle
FALKEN 31N-14B-S BHL ON PLAT (1015'FNL & 460'FWL, SEC.09)	7097.00	-2675.85	-4594.02	3207907.69	1423240.92	40°29'34.051"N	104°45'08.888"W	circle
FALKEN 31N-14B-S BHL REV-2 (1015'FNL & 460'FWL, SEC.09)	7098.25	-2675.85	-4594.02	3207907.69	1423240.92	40°29'34.051"N	104°45'08.888"W	circle

## WELLPATH COMPOSITION - Ref Wellbore: FALKEN 31N-14B-S AWB Ref Wellpath: FALKEN 31N-14B-S AWP

Start MD [ft]	End MD [ft]	Positional Uncertainty Model	Log Name/Comment	Wellbore
25.00	1761.00	Custom BHI NaviTrak (Standard Rotating+Axial Corr) (Rockies 0.03Gt model)	13 1/2" APS EM SURVEYS <153'-1761'>	FALKEN 31N-14B-S AWB
1761.00	13337.00	BHI NaviTrak (IFR1, Rotating+Axial Corr)	8 1/2" NAVIGAMMA MONOBORE <1883-13368>	FALKEN 31N-14B-S AWB
13337.00	13368.00	Blind Drilling (std)	Projection to bit	FALKEN 31N-14B-S AWB



SRC ENERGY

# Actual Wellpath Report

FALKEN 31N-14B-S AWP

Page 9 of 9



## REFERENCE WELLPATH IDENTIFICATION

Operator	SRC ENERGY	Slot	SLOT#17 FALKEN 31N-14B-S (1664'FSL & 276'FEL, SEC.11)
Area	COLORADO	Well	FALKEN 31N-14B-S
Field	WELD COUNTY (NAD83,TRUE NORTH)	Wellbore	FALKEN 31N-14B-S AWB
Facility	SEC.11-T06N-R66W		

## WELLPATH COMMENTS

MD [ft]	Inclination [°]	Azimuth [°]	TVD [ft]	Comment
8148.00	89.910	273.510	7097.54	LANDING POINT (1029'FNL & 261'FWL, SEC.13)
13337.00	89.940	270.060	7097.56	LAST BHGE MWD SURVEY (1000'FNL & 396'FWL, SEC.14)
13368.00	89.940	270.060	7097.59	PROJECTION TO BIT (1000'FNL & 365'FWL, SEC.14)