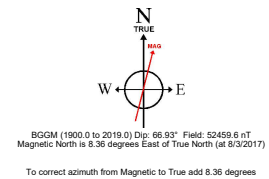
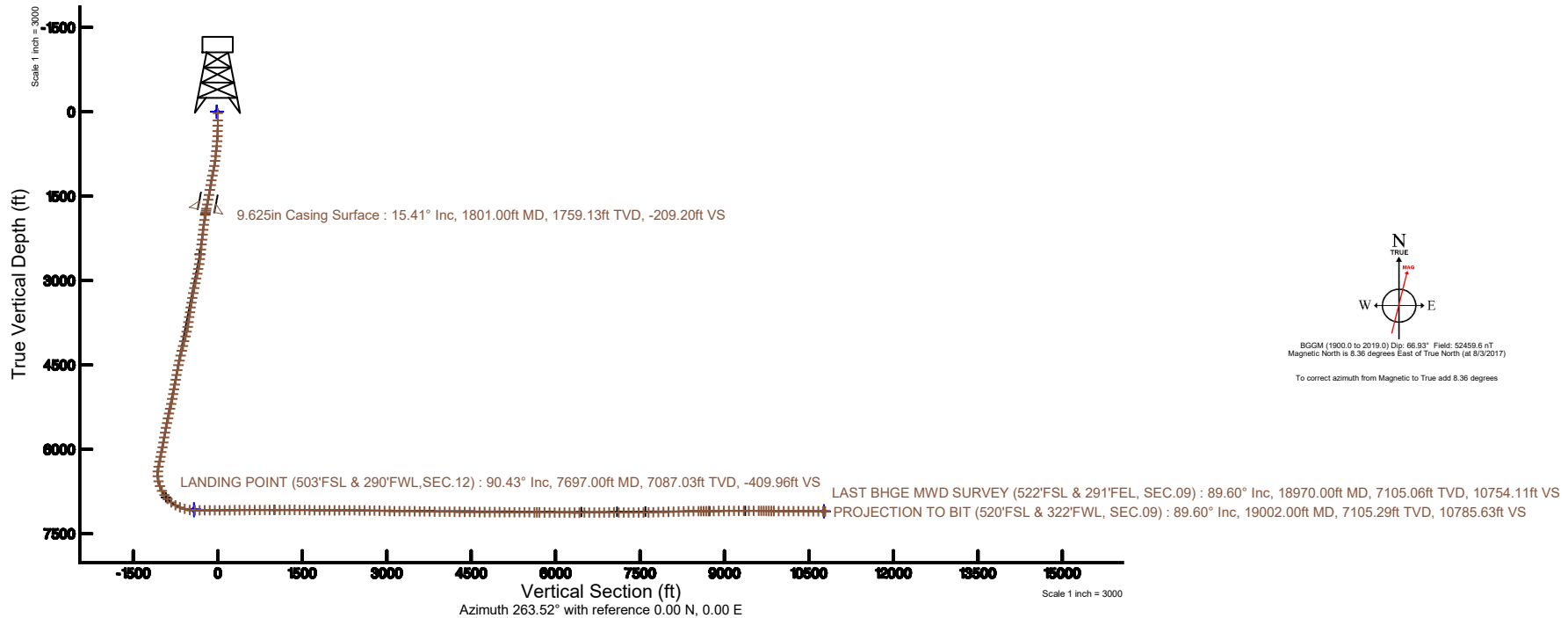
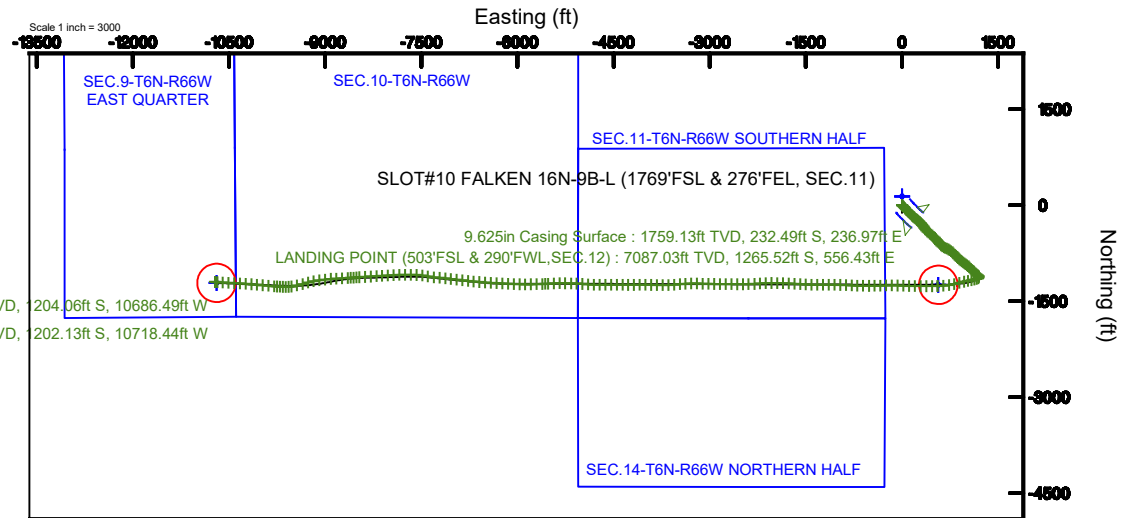


SRC ENERGY

Location: COLORADO Slot: SLOT#10 FALKEN 16N-9B-L (1769'FSL & 276'FEL, SEC.11)
 Field: WELD COUNTY (NAD83, TRUE NORTH) Well: FALKEN 16N-9B-L
 Facility: SEC.11-T06N-R66W Wellbore: FALKEN 16N-9B-L PWB

Plot reference wellpath is FALKEN 16N-9B-L PWB (REV-B.0)	Grid System: NAD83 / Lambert Colorado SP, Northern Zone (501), US feet
True vertical depths are referenced to PRECISION DRILLING 562 (25') (RKB)	* = Wellpath was transformed from a different geodetic datum
Measured depths are referenced to PRECISION DRILLING 562 (25') (RKB)	North Reference: True north
PRECISION DRILLING 562 (25') (RKB) to Mean Sea Level: 4835 feet	Scale: True distance
Mean Sea Level to Mud line (At Slot: SLOT#10 FALKEN 16N-9B-L (1769'FSL & 276'FEL, SEC.11)): 0 feet	Depths are in feet
Coordinates are in feet referenced to Slot	Created by: doddanna on 2018-02-06
	Database: WellArchitectDB





Actual Wellpath Report

FALKEN 16N-9B-L AWP

Page 1 of 11



REFERENCE WELLPATH IDENTIFICATION			
Operator	SRC ENERGY	Slot	SLOT#10 FALKEN 16N-9B-L (1769'FSL & 276'FEL, SEC.11)
Area	COLORADO	Well	FALKEN 16N-9B-L
Field	WELD COUNTY (NAD83,TRUE NORTH)	Wellbore	FALKEN 16N-9B-L AWB
Facility	SEC.11-T06N-R66W		

REPORT SETUP INFORMATION			
Projection System	NAD83 / Lambert Colorado SP, Northern Zone (501), US feet	Software System	WellArchitect® 5.0
North Reference	True	User	Doddanna
Scale	0.999966	Report Generated	2/6/2018 at 1:06:58 PM
Convergence at slot	0.49° East	Database/Source file	WellArchitectDB/FALKEN_16N-9B-L_AWP.xml

WELLPATH LOCATION						
	Local coordinates		Grid coordinates		Geographic coordinates	
	North[ft]	East[ft]	Easting[US ft]	Northing[US ft]	Latitude	Longitude
Slot Location	-134.80	-1.11	3212478.25	1426061.45	40°30'01.537"N	104°44'09.416"W
Facility Reference Pt			3212478.20	1426196.25	40°30'02.869"N	104°44'09.402"W
Field Reference Pt			3171284.48	1426358.81	40°30'07.643"N	104°53'02.634"W

WELLPATH DATUM			
Calculation method	Minimum curvature	PRECISION DRILLING 562 (25') (RKB) to Facility Vertical Datum	4835.00ft
Horizontal Reference Pt	Slot	PRECISION DRILLING 562 (25') (RKB) to Mean Sea Level	4835.00ft
Vertical Reference Pt	PRECISION DRILLING 562 (25') (RKB)	PRECISION DRILLING 562 (25') (RKB) to Mud Line at Slot (SLOT#10 FALKEN 16N-9B-L (1769'FSL & 276'FEL, SEC.11))	4835.00ft
MD Reference Pt	PRECISION DRILLING 562 (25') (RKB)	Section Origin	N 0.00, E 0.00 ft
Field Vertical Reference	Mean Sea Level	Section Azimuth	263.52°



SRC ENERGY

Actual Wellpath Report

FALKEN 16N-9B-L AWP

Page 2 of 11

**BAKER
HUGHES****REFERENCE WELLPATH IDENTIFICATION**

Operator	SRC ENERGY	Slot	SLOT#10 FALKEN 16N-9B-L (1769'FSL & 276'FEL, SEC.11)
Area	COLORADO	Well	FALKEN 16N-9B-L
Field	WELD COUNTY (NAD83,TRUE NORTH)	Wellbore	FALKEN 16N-9B-L AWB
Facility	SEC.11-T06N-R66W		

WELLPATH DATA (221 stations) † = interpolated/extrapolated station

MD [ft]	Inclination [°]	Azimuth [°]	TVD [ft]	Vert Sect [ft]	North [ft]	East [ft]	DLS [°/100ft]	Comments
0.00†	0.000	337.160	0.00	0.00	0.00	0.00	0.00	
25.00	0.000	337.160	25.00	0.00	0.00	0.00	0.00	
153.00	0.300	337.160	153.00	0.09	0.31	-0.13	0.23	
247.00	0.670	117.300	247.00	-0.29	0.28	0.26	0.98	
342.00	1.620	136.920	341.98	-1.56	-0.95	1.67	1.07	
436.00	4.380	131.640	435.84	-4.74	-4.31	5.26	2.95	
526.00	7.340	132.380	525.36	-10.82	-10.47	12.08	3.29	
614.00	9.220	132.430	612.44	-19.15	-19.01	21.44	2.14	
704.00	10.750	139.660	701.08	-28.57	-30.28	32.19	2.19	
793.00	12.370	141.600	788.27	-38.23	-44.08	43.49	1.87	
883.00	14.280	140.080	875.84	-49.45	-60.15	56.60	2.16	
972.00	16.080	134.360	961.74	-63.28	-77.18	72.46	2.63	
1061.00	16.550	131.610	1047.15	-79.53	-94.22	90.75	1.02	
1151.00	16.450	135.090	1133.45	-96.01	-111.76	109.33	1.10	
1240.00	16.500	137.370	1218.80	-111.30	-129.98	126.79	0.73	
1330.00	15.930	138.560	1305.22	-125.91	-148.64	143.62	0.73	
1419.00	15.240	136.500	1390.95	-139.95	-166.28	159.75	0.99	
1509.00	15.090	130.100	1477.82	-155.13	-182.41	176.86	1.87	
1598.00	15.050	130.970	1563.76	-170.90	-197.45	194.44	0.26	
1688.00	16.040	129.700	1650.46	-187.41	-213.05	212.83	1.16	
1763.00	16.010	128.620	1722.55	-201.89	-226.13	228.89	0.40	
1835.00	14.870	127.000	1791.95	-215.60	-237.89	244.02	1.69	
1879.00	12.180	126.560	1834.73	-223.09	-244.05	252.26	6.12	
1969.00	11.540	129.680	1922.81	-236.26	-255.45	266.82	1.01	
2058.00	11.450	132.620	2010.02	-248.21	-267.12	280.17	0.67	
2148.00	11.430	139.000	2098.24	-259.11	-279.90	292.59	1.41	
2237.00	11.410	140.510	2185.47	-268.91	-293.35	303.98	0.34	
2327.00	11.440	141.190	2273.69	-278.53	-307.17	315.23	0.15	
2416.00	11.450	143.710	2360.92	-287.64	-321.17	325.99	0.56	
2506.00	12.870	147.110	2448.90	-296.54	-336.79	336.72	1.77	



SRC ENERGY

Actual Wellpath Report

FALKEN 16N-9B-L AWP

Page 3 of 11

**BAKER
HUGHES****REFERENCE WELLPATH IDENTIFICATION**

Operator	SRC ENERGY	Slot	SLOT#10 FALKEN 16N-9B-L (1769'FSL & 276'FEL, SEC.11)
Area	COLORADO	Well	FALKEN 16N-9B-L
Field	WELD COUNTY (NAD83,TRUE NORTH)	Wellbore	FALKEN 16N-9B-L AWB
Facility	SEC.11-T06N-R66W		

WELLPATH DATA (221 stations)

MD [ft]	Inclination [°]	Azimuth [°]	TVD [ft]	Vert Sect [ft]	North [ft]	East [ft]	DLS [°/100ft]	Comments
2595.00	15.320	151.820	2535.22	-305.30	-355.48	347.66	3.04	
2685.00	16.710	143.410	2621.73	-316.18	-376.35	360.99	3.00	
2774.00	16.580	136.370	2707.01	-330.27	-395.82	377.38	2.27	
2864.00	16.420	133.570	2793.31	-346.19	-413.88	395.46	0.90	
2954.00	16.640	130.930	2879.59	-363.08	-431.09	414.41	0.87	
3043.00	16.510	126.000	2964.90	-381.03	-446.87	434.27	1.59	
3133.00	16.460	126.320	3051.20	-399.82	-461.94	454.89	0.12	
3222.00	16.430	129.090	3136.56	-417.88	-477.35	474.82	0.88	
3312.00	16.390	129.830	3222.89	-435.56	-493.51	494.45	0.24	
3401.00	16.230	134.310	3308.31	-452.09	-510.24	512.99	1.42	
3491.00	16.480	138.040	3394.67	-467.45	-528.52	530.53	1.20	
3580.00	16.440	142.030	3480.03	-481.36	-547.83	546.72	1.27	
3669.00	16.450	143.750	3565.39	-494.19	-567.92	561.92	0.55	
3759.00	16.220	141.770	3651.76	-507.13	-588.07	577.23	0.67	
3849.00	16.520	143.980	3738.11	-520.05	-608.30	592.53	0.77	
3938.00	16.830	135.130	3823.38	-534.29	-627.67	609.07	2.87	
4028.00	17.820	126.850	3909.31	-552.40	-645.16	629.28	2.95	
4117.00	17.780	116.810	3994.07	-573.67	-659.46	652.31	3.44	
4207.00	16.820	110.910	4080.00	-596.72	-670.31	676.74	2.22	
4296.00	16.560	115.280	4165.26	-618.94	-680.32	700.24	1.44	
4386.00	16.740	120.870	4251.49	-640.15	-692.45	722.97	1.79	
4475.00	16.730	122.170	4336.72	-660.34	-705.84	744.81	0.42	
4565.00	17.380	126.050	4422.76	-680.36	-720.65	766.64	1.46	
4654.00	17.190	130.260	4507.75	-699.17	-736.98	787.43	1.42	
4743.00	16.780	133.890	4592.87	-716.38	-754.38	806.72	1.28	
4833.00	16.620	137.740	4679.08	-732.19	-772.91	824.74	1.24	
4922.00	16.670	140.330	4764.35	-746.62	-792.16	841.45	0.84	
5012.00	16.570	138.510	4850.59	-761.04	-811.71	858.19	0.59	
5101.00	16.530	136.580	4935.90	-775.93	-830.41	875.30	0.62	
5191.00	16.560	133.170	5022.18	-791.93	-848.49	893.46	1.08	



SRC ENERGY

Actual Wellpath Report

FALKEN 16N-9B-L AWP

Page 4 of 11

**BAKER
HUGHES****REFERENCE WELLPATH IDENTIFICATION**

Operator	SRC ENERGY	Slot	SLOT#10 FALKEN 16N-9B-L (1769'FSL & 276'FEL, SEC.11)
Area	COLORADO	Well	FALKEN 16N-9B-L
Field	WELD COUNTY (NAD83,TRUE NORTH)	Wellbore	FALKEN 16N-9B-L AWB
Facility	SEC.11-T06N-R66W		

WELLPATH DATA (221 stations)

MD [ft]	Inclination [°]	Azimuth [°]	TVD [ft]	Vert Sect [ft]	North [ft]	East [ft]	DLS [°/100ft]	Comments
5280.00	16.690	127.560	5107.46	-809.33	-864.96	912.84	1.81	
5370.00	16.460	124.280	5193.72	-828.28	-880.02	933.62	1.07	
5459.00	16.080	126.060	5279.16	-846.91	-894.37	954.01	0.70	
5549.00	15.710	124.300	5365.72	-865.32	-908.58	974.15	0.68	
5639.00	17.310	125.860	5452.01	-884.44	-923.29	995.07	1.84	
5728.00	17.170	127.590	5537.01	-903.67	-939.06	1016.21	0.60	
5818.00	17.110	131.970	5623.02	-921.99	-956.02	1036.58	1.44	
5907.00	17.390	143.170	5708.04	-937.40	-975.42	1054.29	3.74	
5996.00	17.620	137.400	5792.92	-952.06	-995.99	1071.38	1.97	
6086.00	15.490	134.030	5879.19	-967.73	-1014.37	1089.24	2.60	
6175.00	15.920	131.760	5964.87	-983.42	-1030.76	1106.89	0.84	
6265.00	15.980	130.430	6051.40	-1000.10	-1047.01	1125.53	0.41	
6354.00	16.370	132.070	6136.88	-1016.77	-1063.36	1144.17	0.67	
6444.00	16.550	131.360	6223.19	-1033.77	-1080.33	1163.20	0.30	
6533.00	16.440	125.540	6308.53	-1051.63	-1096.03	1182.97	1.86	
6623.00	11.520	152.080	6395.93	-1064.40	-1111.40	1197.56	8.85	
6712.00	11.660	196.460	6483.28	-1064.14	-1127.90	1199.18	9.78	
6802.00	14.920	234.430	6571.02	-1050.44	-1143.40	1187.15	10.13	
6891.00	18.690	251.200	6656.25	-1026.47	-1154.67	1164.31	6.86	
6981.00	28.310	254.920	6738.70	-991.20	-1164.89	1129.97	10.81	
7070.00	33.880	260.080	6814.89	-945.53	-1174.67	1085.11	6.93	
7160.00	42.020	260.410	6885.80	-890.32	-1184.02	1030.61	9.05	
7249.00	51.660	257.270	6946.62	-825.71	-1196.71	967.04	11.13	
7339.00	61.340	254.800	6996.24	-751.41	-1214.88	894.32	11.00	
7428.00	68.680	257.580	7033.82	-671.46	-1234.07	816.04	8.72	
7518.00	73.750	261.410	7062.80	-586.51	-1249.55	732.30	6.92	
7607.00	82.250	264.450	7081.29	-499.55	-1260.22	645.99	10.12	
7697.00	90.430	268.760	7087.03	-409.96	-1265.52	556.43	10.27	LANDING POINT (503'FSL & 290'FWL, SEC.12)
7786.00	89.600	269.770	7087.01	-321.41	-1266.66	467.44	1.47	
7876.00	90.120	269.640	7087.23	-231.94	-1267.12	377.44	0.60	



SRC ENERGY

Actual Wellpath Report

FALKEN 16N-9B-L AWP

Page 5 of 11

**BAKER
HUGHES****REFERENCE WELLPATH IDENTIFICATION**

Operator	SRC ENERGY	Slot	SLOT#10 FALKEN 16N-9B-L (1769'FSL & 276'FEL, SEC.11)
Area	COLORADO	Well	FALKEN 16N-9B-L
Field	WELD COUNTY (NAD83,TRUE NORTH)	Wellbore	FALKEN 16N-9B-L AWB
Facility	SEC.11-T06N-R66W		

WELLPATH DATA (221 stations)

MD [ft]	Inclination [°]	Azimuth [°]	TVD [ft]	Vert Sect [ft]	North [ft]	East [ft]	DLS [°/100ft]	Comments
7965.00	90.090	270.690	7087.07	-143.54	-1266.87	288.44	1.18	
8054.00	89.850	270.980	7087.11	-55.26	-1265.57	199.45	0.42	
8144.00	90.490	272.260	7086.85	33.84	-1263.02	109.49	1.59	
8234.00	90.770	272.270	7085.86	122.78	-1259.47	19.56	0.31	
8323.00	90.310	271.350	7085.02	210.85	-1256.66	-69.39	1.16	
8412.00	90.710	270.700	7084.23	299.08	-1255.06	-158.37	0.86	
8502.00	89.970	268.170	7083.69	388.59	-1255.95	-248.36	2.93	
8591.00	90.650	267.930	7083.21	477.31	-1258.98	-337.30	0.81	
8681.00	90.180	269.000	7082.56	566.97	-1261.39	-427.27	1.30	
8770.00	90.740	270.300	7081.84	655.46	-1261.93	-516.26	1.59	
8860.00	89.450	270.540	7081.69	744.80	-1261.28	-606.25	1.46	
8950.00	90.030	272.220	7082.10	833.95	-1259.11	-696.22	1.97	
9039.00	90.520	273.220	7081.68	921.80	-1254.88	-785.12	1.25	
9129.00	90.150	272.050	7081.15	1010.66	-1250.75	-875.02	1.36	
9218.00	90.800	271.650	7080.41	1098.72	-1247.87	-963.97	0.86	
9307.00	90.280	271.060	7079.57	1186.88	-1245.77	-1052.94	0.88	
9397.00	90.090	270.640	7079.28	1276.15	-1244.43	-1142.93	0.51	
9486.00	89.910	269.860	7079.28	1364.53	-1244.05	-1231.93	0.90	
9576.00	89.140	269.980	7080.03	1453.97	-1244.17	-1321.93	0.87	
9665.00	89.350	271.120	7081.20	1542.29	-1243.32	-1410.91	1.30	
9755.00	87.910	272.810	7083.35	1631.28	-1240.23	-1500.83	2.47	
9844.00	90.060	273.810	7084.93	1718.96	-1235.10	-1589.66	2.66	
9934.00	89.540	273.540	7085.24	1807.55	-1229.33	-1679.47	0.65	
10023.00	88.980	272.630	7086.39	1895.30	-1224.54	-1768.34	1.20	
10112.00	89.260	272.020	7087.76	1983.24	-1220.93	-1857.25	0.75	
10202.00	90.250	271.390	7088.14	2072.32	-1218.25	-1947.21	1.30	
10291.00	90.180	269.010	7087.81	2160.71	-1217.94	-2036.20	2.68	
10381.00	90.060	267.130	7087.62	2250.42	-1220.97	-2126.15	2.09	
10470.00	90.180	266.000	7087.44	2339.30	-1226.30	-2214.99	1.28	
10559.00	89.380	266.470	7087.78	2428.19	-1232.15	-2303.79	1.04	



SRC ENERGY

Actual Wellpath Report

FALKEN 16N-9B-L AWP

Page 6 of 11

**BAKER
HUGHES****REFERENCE WELLPATH IDENTIFICATION**

Operator	SRC ENERGY	Slot	SLOT#10 FALKEN 16N-9B-L (1769'FSL & 276'FEL, SEC.11)
Area	COLORADO	Well	FALKEN 16N-9B-L
Field	WELD COUNTY (NAD83,TRUE NORTH)	Wellbore	FALKEN 16N-9B-L AWB
Facility	SEC.11-T06N-R66W		

WELLPATH DATA (221 stations)

MD [ft]	Inclination [°]	Azimuth [°]	TVD [ft]	Vert Sect [ft]	North [ft]	East [ft]	DLS [°/100ft]	Comments
10649.00	89.720	268.810	7088.48	2517.95	-1235.85	-2393.71	2.63	
10738.00	89.880	269.900	7088.80	2606.49	-1236.85	-2482.70	1.24	
10828.00	88.520	270.300	7090.05	2695.88	-1236.70	-2572.69	1.58	
10917.00	88.830	270.450	7092.11	2784.22	-1236.11	-2661.66	0.39	
11006.00	88.550	270.370	7094.14	2872.56	-1235.48	-2750.64	0.33	
11096.00	88.400	270.890	7096.54	2961.83	-1234.49	-2840.60	0.60	
11185.00	88.550	271.250	7098.91	3050.03	-1232.83	-2929.55	0.44	
11275.00	88.340	271.530	7101.35	3139.15	-1230.64	-3019.49	0.39	
11365.00	89.820	271.670	7102.80	3228.24	-1228.13	-3109.44	1.65	
11454.00	89.940	270.770	7102.98	3316.43	-1226.24	-3198.42	1.02	
11544.00	89.780	268.970	7103.20	3405.88	-1226.44	-3288.42	2.01	
11634.00	89.450	267.190	7103.81	3495.59	-1229.46	-3378.36	2.01	
11723.00	89.420	264.400	7104.68	3584.50	-1235.98	-3467.11	3.13	
11812.00	89.200	265.820	7105.76	3673.46	-1243.57	-3555.78	1.61	
11902.00	88.120	267.920	7107.86	3763.27	-1248.48	-3645.61	2.62	
11991.00	88.090	268.580	7110.80	3851.92	-1251.20	-3734.52	0.74	
12080.00	90.060	272.100	7112.24	3940.26	-1250.67	-3823.49	4.53	
12170.00	89.780	272.470	7112.37	4029.21	-1247.08	-3913.42	0.52	
12259.00	89.540	270.880	7112.90	4117.30	-1244.48	-4002.37	1.81	
12349.00	89.480	268.810	7113.67	4206.75	-1244.72	-4092.37	2.30	
12438.00	89.420	268.770	7114.52	4295.37	-1246.60	-4181.34	0.08	
12528.00	89.540	271.030	7115.34	4384.80	-1246.76	-4271.33	2.51	
12617.00	89.290	271.640	7116.25	4472.97	-1244.68	-4360.30	0.74	
12707.00	89.230	270.480	7117.41	4562.18	-1243.02	-4450.28	1.29	
12796.00	89.260	269.190	7118.58	4650.63	-1243.28	-4539.27	1.45	
12886.00	90.340	269.180	7118.89	4740.19	-1244.56	-4629.26	1.20	
12975.00	89.850	270.020	7118.75	4828.68	-1245.18	-4718.25	1.09	
13065.00	90.280	271.900	7118.64	4917.92	-1243.67	-4808.24	2.14	
13154.00	89.420	274.240	7118.88	5005.68	-1238.90	-4897.10	2.80	
13244.00	89.320	274.260	7119.87	5094.10	-1232.23	-4986.85	0.11	



SRC ENERGY

Actual Wellpath Report

FALKEN 16N-9B-L AWP

Page 7 of 11

**BAKER
HUGHES****REFERENCE WELLPATH IDENTIFICATION**

Operator	SRC ENERGY	Slot	SLOT#10 FALKEN 16N-9B-L (1769'FSL & 276'FEL, SEC.11)
Area	COLORADO	Well	FALKEN 16N-9B-L
Field	WELD COUNTY (NAD83,TRUE NORTH)	Wellbore	FALKEN 16N-9B-L AWB
Facility	SEC.11-T06N-R66W		

WELLPATH DATA (221 stations)

MD [ft]	Inclination [°]	Azimuth [°]	TVD [ft]	Vert Sect [ft]	North [ft]	East [ft]	DLS [°/100ft]	Comments
13333.00	89.600	272.680	7120.71	5181.75	-1226.85	-5075.68	1.80	
13422.00	89.970	271.010	7121.04	5269.81	-1223.98	-5164.63	1.92	
13512.00	89.450	271.860	7121.50	5358.95	-1221.73	-5254.60	1.11	
13601.00	89.510	269.530	7122.30	5447.24	-1220.65	-5343.58	2.62	
13690.00	89.480	266.640	7123.09	5535.95	-1223.62	-5432.52	3.25	
13779.00	89.880	266.400	7123.59	5624.82	-1229.03	-5521.35	0.52	
13824.00	90.180	267.460	7123.56	5669.74	-1231.44	-5566.29	2.45	
13869.00	90.090	268.120	7123.46	5714.62	-1233.17	-5611.25	1.48	
13958.00	89.170	268.500	7124.03	5803.30	-1235.80	-5700.21	1.12	
14047.00	89.290	269.030	7125.23	5891.92	-1237.71	-5789.18	0.61	
14137.00	89.850	270.260	7125.90	5981.40	-1238.27	-5879.18	1.50	
14226.00	89.690	271.640	7126.26	6069.65	-1236.80	-5968.16	1.56	
14316.00	89.380	272.830	7126.99	6158.61	-1233.29	-6058.09	1.37	
14405.00	89.170	272.330	7128.12	6246.49	-1229.28	-6146.99	0.61	
14495.00	89.720	272.830	7128.99	6335.36	-1225.23	-6236.90	0.83	
14584.00	90.830	273.130	7128.56	6423.14	-1220.60	-6325.77	1.29	
14674.00	90.520	272.980	7127.50	6511.89	-1215.81	-6415.64	0.38	
14763.00	90.460	274.410	7126.74	6599.49	-1210.07	-6504.45	1.61	
14853.00	90.370	275.780	7126.09	6687.65	-1202.08	-6594.09	1.53	
14942.00	90.490	275.360	7125.42	6774.69	-1193.44	-6682.66	0.49	
15031.00	90.280	275.490	7124.82	6861.77	-1185.03	-6771.26	0.28	
15121.00	90.430	276.000	7124.26	6949.73	-1176.02	-6860.81	0.59	
15211.00	89.600	276.830	7124.24	7037.45	-1165.96	-6950.24	1.30	
15300.00	89.380	277.990	7125.03	7123.84	-1154.48	-7038.50	1.33	
15389.00	89.540	276.290	7125.87	7210.33	-1143.42	-7126.80	1.92	
15479.00	89.690	272.940	7126.48	7298.63	-1136.18	-7216.49	3.73	
15568.00	89.780	277.500	7126.89	7385.76	-1128.09	-7305.10	5.12	
15661.00	89.940	280.370	7127.12	7475.40	-1113.64	-7396.96	3.09	
15750.00	91.480	277.570	7126.01	7561.17	-1099.77	-7484.85	3.59	
15840.00	91.600	272.790	7123.59	7649.25	-1091.65	-7574.43	5.31	



SRC ENERGY

Actual Wellpath Report

FALKEN 16N-9B-L AWP

Page 8 of 11

**BAKER
HUGHES****REFERENCE WELLPATH IDENTIFICATION**

Operator	SRC ENERGY	Slot	SLOT#10 FALKEN 16N-9B-L (1769'FSL & 276'FEL, SEC.11)
Area	COLORADO	Well	FALKEN 16N-9B-L
Field	WELD COUNTY (NAD83,TRUE NORTH)	Wellbore	FALKEN 16N-9B-L AWB
Facility	SEC.11-T06N-R66W		

WELLPATH DATA (221 stations)

MD [ft]	Inclination [°]	Azimuth [°]	TVD [ft]	Vert Sect [ft]	North [ft]	East [ft]	DLS [°/100ft]	Comments
15929.00	91.540	270.650	7121.15	7737.30	-1088.98	-7663.35	2.40	
16019.00	91.570	270.020	7118.71	7826.63	-1088.45	-7753.31	0.70	
16108.00	91.570	267.680	7116.27	7915.21	-1090.24	-7842.26	2.63	
16198.00	91.480	266.440	7113.88	8005.00	-1094.85	-7932.10	1.38	
16287.00	91.570	266.320	7111.51	8093.86	-1100.47	-8020.90	0.17	
16377.00	91.420	266.500	7109.16	8183.71	-1106.10	-8110.69	0.26	
16466.00	91.540	266.830	7106.86	8272.55	-1111.28	-8199.51	0.39	
16555.00	91.540	266.340	7104.47	8361.39	-1116.58	-8288.32	0.55	
16645.00	90.520	266.560	7102.85	8451.26	-1122.15	-8378.13	1.16	
16734.00	90.550	266.980	7102.02	8540.11	-1127.17	-8466.98	0.47	
16779.00	90.430	266.220	7101.64	8585.04	-1129.83	-8511.90	1.71	
16824.00	90.490	265.800	7101.27	8630.00	-1132.97	-8556.79	0.94	
16869.00	90.490	266.110	7100.89	8674.96	-1136.14	-8601.68	0.69	
16914.00	90.490	266.290	7100.50	8719.90	-1139.12	-8646.58	0.40	
17003.00	90.340	266.240	7099.86	8808.80	-1144.92	-8735.39	0.18	
17093.00	90.340	269.450	7099.33	8898.53	-1148.30	-8825.31	3.57	
17182.00	90.340	264.950	7098.80	8987.32	-1152.65	-8914.18	5.06	
17272.00	90.370	261.820	7098.24	9077.31	-1163.02	-9003.57	3.48	
17361.00	90.400	261.120	7097.64	9166.25	-1176.22	-9091.58	0.79	
17450.00	90.400	260.200	7097.02	9255.13	-1190.66	-9179.40	1.03	
17540.00	90.030	255.300	7096.68	9344.65	-1209.75	-9267.32	5.46	
17629.00	90.000	253.610	7096.66	9432.54	-1233.60	-9353.06	1.90	
17718.00	89.850	256.650	7096.78	9520.58	-1256.44	-9439.07	3.42	
17808.00	89.630	262.440	7097.18	9610.32	-1272.76	-9527.54	6.44	
17853.00	89.630	266.260	7097.48	9655.31	-1277.19	-9572.31	8.49	
17897.00	89.630	269.710	7097.76	9699.16	-1278.74	-9616.27	7.84	
17942.00	89.630	273.200	7098.05	9743.73	-1277.60	-9661.25	7.76	
17987.00	89.630	273.910	7098.34	9788.04	-1274.81	-9706.16	1.58	
18031.00	89.630	274.150	7098.62	9831.30	-1271.71	-9750.05	0.55	
18076.00	89.570	274.490	7098.94	9875.50	-1268.32	-9794.93	0.77	



SRC ENERGY

Actual Wellpath Report

FALKEN 16N-9B-L AWP

Page 9 of 11

**BAKER
HUGHES****REFERENCE WELLPATH IDENTIFICATION**

Operator	SRC ENERGY	Slot	SLOT#10 FALKEN 16N-9B-L (1769'FSL & 276'FEL, SEC.11)
Area	COLORADO	Well	FALKEN 16N-9B-L
Field	WELD COUNTY (NAD83,TRUE NORTH)	Wellbore	FALKEN 16N-9B-L AWB
Facility	SEC.11-T06N-R66W		

WELLPATH DATA (221 stations)

MD [ft]	Inclination [°]	Azimuth [°]	TVD [ft]	Vert Sect [ft]	North [ft]	East [ft]	DLS [°/100ft]	Comments
18166.00	89.570	275.120	7099.61	9963.75	-1260.79	-9884.61	0.70	
18255.00	89.630	275.270	7100.24	10050.91	-1252.73	-9973.24	0.18	
18345.00	89.600	274.800	7100.84	10139.09	-1244.83	-10062.89	0.52	
18434.00	89.600	274.800	7101.46	10226.37	-1237.38	-10151.57	0.00	
18523.00	89.570	274.340	7102.11	10313.72	-1230.29	-10240.29	0.52	
18613.00	89.630	273.920	7102.73	10402.18	-1223.81	-10330.05	0.47	
18702.00	89.600	273.060	7103.33	10489.83	-1218.39	-10418.88	0.97	
18791.00	89.660	272.890	7103.91	10577.62	-1213.77	-10507.76	0.20	
18881.00	89.630	273.050	7104.47	10666.39	-1209.11	-10597.64	0.18	
18970.00	89.600	273.460	7105.06	10754.11	-1204.06	-10686.49	0.46	LAST BHGE MWD SURVEY (522'FSL & 291'FEL, SEC.09)
19002.00	89.600	273.460	7105.29	10785.63	-1202.13	-10718.44	0.00	PROJECTION TO BIT (520'FSL & 322'FWL, SEC.09)

HOLE & CASING SECTIONS - Ref Wellbore: FALKEN 16N-9B-L AWB Ref Wellpath: FALKEN 16N-9B-L AWP

String/Diameter	Start MD [ft]	End MD [ft]	Interval [ft]	Start TVD [ft]	End TVD [ft]	Start N/S [ft]	Start E/W [ft]	End N/S [ft]	End E/W [ft]
13.5in Open Hole	25.00	1801.00	1776.00	25.00	1759.13	0.00	0.00	-232.49	236.97
9.625in Casing Surface	25.00	1801.00	1776.00	25.00	1759.13	0.00	0.00	-232.49	236.97
8.5in Open Hole	1801.00	19002.00	17201.00	1759.13	7105.29	-232.49	236.97	-1202.13	-10718.44



SRC ENERGY

Actual Wellpath Report

FALKEN 16N-9B-L AWP

Page 10 of 11



REFERENCE WELLPATH IDENTIFICATION

Operator	SRC ENERGY	Slot	SLOT#10 FALKEN 16N-9B-L (1769'FSL & 276'FEL, SEC.11)
Area	COLORADO	Well	FALKEN 16N-9B-L
Field	WELD COUNTY (NAD83,TRUE NORTH)	Wellbore	FALKEN 16N-9B-L AWB
Facility	SEC.11-T06N-R66W		

TARGETS

Name	TVD [ft]	North [ft]	East [ft]	Grid East [US ft]	Grid North [US ft]	Latitude	Longitude	Shape
SEC.10-T6N-R66W	0.00	134.80	1.11	3212478.20	1426196.25	40°30'02.869"N	104°44'09.402"W	polygon
SEC.11-T6N-R66W SOUTHERN HALF	0.00	134.80	1.11	3212478.20	1426196.25	40°30'02.869"N	104°44'09.402"W	polygon
SEC.14-T6N-R66W NORTHERN HALF	0.00	134.80	1.11	3212478.20	1426196.25	40°30'02.869"N	104°44'09.402"W	polygon
SEC.9-T6N-R66W EAST QUARTER	0.00	134.80	1.11	3212478.20	1426196.25	40°30'02.869"N	104°44'09.402"W	polygon
FALKEN 16N-9B-L TOP OF PROD ON PLAT (523'FSL & 300'FWL, SEC.12)	7065.00	-1245.96	566.81	3213055.76	1424820.46	40°29'49.225"N	104°44'02.080"W	circle
FALKEN 16N-9B-L TOP OF PROD REV-2 (523'FSL & 300'FWL, SEC.12)	7086.41	-1245.96	566.81	3213055.76	1424820.46	40°29'49.225"N	104°44'02.080"W	point
FALKEN 16N-9B-L BHL ON PLAT (533'FSL & 300'FEL, SEC.09)	7104.00	-1215.60	-10695.99	3201793.51	1424753.79	40°29'49.502"N	104°46'27.865"W	circle
FALKEN 16N-9B-L BHL REV-2 (533'FSL & 300'FEL, SEC.09)	7104.58	-1215.60	-10695.99	3201793.51	1424753.79	40°29'49.502"N	104°46'27.865"W	point

WELLPATH COMPOSITION - Ref Wellbore: FALKEN 16N-9B-L AWB Ref Wellpath: FALKEN 16N-9B-L AWP

Start MD [ft]	End MD [ft]	Positional Uncertainty Model	Log Name/Comment	Wellbore
25.00	1763.00	Custom BHI NaviTrak (Standard Rotating+Axial Corr) (Rockies 0.03Gt model)	13 1/2" APS EM SURVEYS <153'-1763'>	FALKEN 16N-9B-L AWB
1763.00	18970.00	BHI AutoTrak Curve (IFR1, Short)	8 1/2" ATC SURVEYS <1835'-18970'>	FALKEN 16N-9B-L AWB
18970.00	19002.00	Blind Drilling (std)	Projection to bit	FALKEN 16N-9B-L AWB



SRC ENERGY

Actual Wellpath Report

FALKEN 16N-9B-L AWP

Page 11 of 11



REFERENCE WELLPATH IDENTIFICATION

Operator	SRC ENERGY	Slot	SLOT#10 FALKEN 16N-9B-L (1769'FSL & 276'FEL, SEC.11)
Area	COLORADO	Well	FALKEN 16N-9B-L
Field	WELD COUNTY (NAD83,TRUE NORTH)	Wellbore	FALKEN 16N-9B-L AWB
Facility	SEC.11-T06N-R66W		

WELLPATH COMMENTS

MD [ft]	Inclination [°]	Azimuth [°]	TVD [ft]	Comment
7697.00	90.430	268.760	7087.03	LANDING POINT (503'FSL & 290'FWL,SEC.12)
18970.00	89.600	273.460	7105.06	LAST BHGE MWD SURVEY (522'FSL & 291'FEL, SEC.09)
19002.00	89.600	273.460	7105.29	PROJECTION TO BIT (520'FSL & 322'FWL, SEC.09)