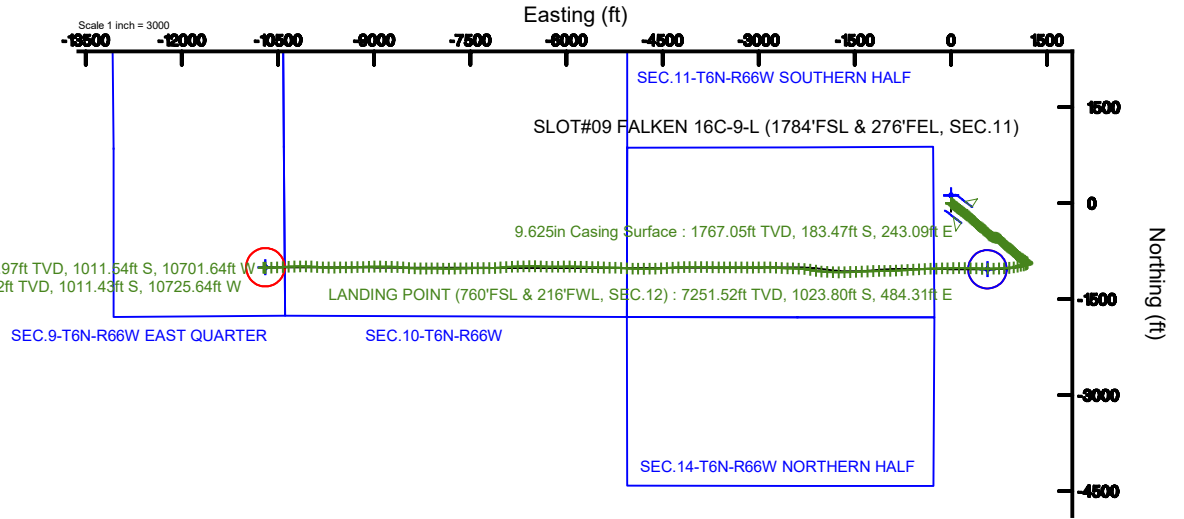


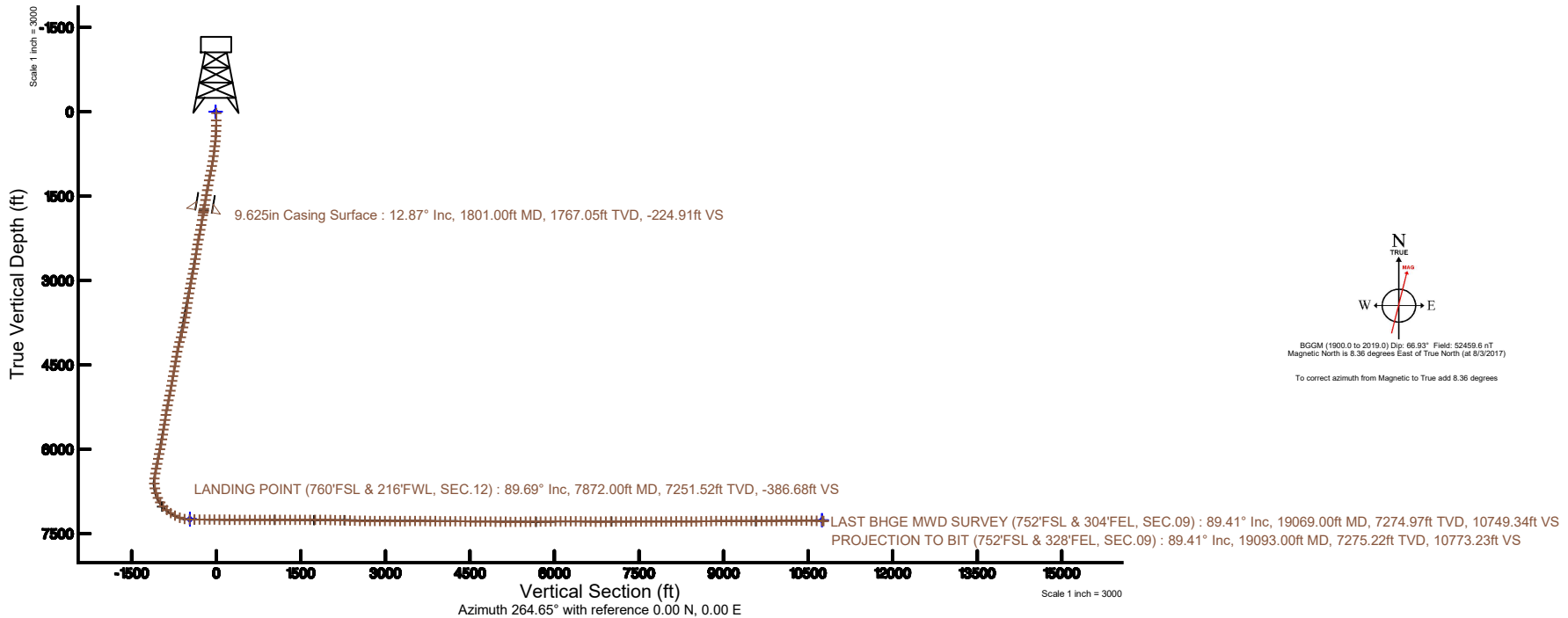
SRC ENERGY

Location: COLORADO Slot: SLOT#09 FALKEN 16C-9-L (1784'FSL & 276'FEL, SEC.11)
 Field: WELD COUNTY (NAD83,TRUE NORTH) Well: FALKEN 16C-9-L
 Facility: SEC.11-T06N-R66W Wellbore: FALKEN 16C-9-L PWB

Plot reference wellpath is FALKEN 16C-9-L PWB (REV-8.0)	Grid System: NAD83 / Lambert Colorado SP, Northern Zone (501), US feet
True vertical depths are referenced to PRECISION DRILLING 562 (25') (RKB)	* = Wellpath was transformed from a different geoidetic datum
Measured depths are referenced to PRECISION DRILLING 562 (25') (RKB)	North Reference: True north
PRECISION DRILLING 562 (25') (RKB) to Mean Sea Level: 4835 feet	Scale: True distance
Mean Sea Level to Mud line (At Slot: SLOT#09 FALKEN 16C-9-L (1784'FSL & 276'FEL, SEC.11)): 0 feet	Depths are in feet
Coordinates are in feet referenced to Slot	Created by: doddanna on 2018-02-06
	Database: WellArchitectDB



Vertical Section (ft)





Actual Wellpath Report

FALKEN 16C-9-L AWP

Page 1 of 11



REFERENCE WELLPATH IDENTIFICATION			
Operator	SRC ENERGY	Slot	SLOT#09 FALKEN 16C-9-L (1784'FSL & 276'FEL, SEC.11)
Area	COLORADO	Well	FALKEN 16C-9-L
Field	WELD COUNTY (NAD83,TRUE NORTH)	Wellbore	FALKEN 16C-9-L AWB
Facility	SEC.11-T06N-R66W		

REPORT SETUP INFORMATION			
Projection System	NAD83 / Lambert Colorado SP, Northern Zone (501), US feet	Software System	WellArchitect® 5.0
North Reference	True	User	Doddanna
Scale	0.999966	Report Generated	2/6/2018 at 12:23:52 PM
Convergence at slot	0.49° East	Database/Source file	WellArchitectDB/FALKEN_16C-9-L_AWP.xml

WELLPATH LOCATION						
	Local coordinates		Grid coordinates		Geographic coordinates	
	North[ft]	East[ft]	Easting[US ft]	Northing[US ft]	Latitude	Longitude
Slot Location	-119.86	-1.11	3212478.12	1426076.39	40°30'01.685"N	104°44'09.416"W
Facility Reference Pt			3212478.20	1426196.25	40°30'02.869"N	104°44'09.402"W
Field Reference Pt			3171284.48	1426358.81	40°30'07.643"N	104°53'02.634"W

WELLPATH DATUM			
Calculation method	Minimum curvature	PRECISION DRILLING 562 (25') (RKB) to Facility Vertical Datum	4835.00ft
Horizontal Reference Pt	Slot	PRECISION DRILLING 562 (25') (RKB) to Mean Sea Level	4835.00ft
Vertical Reference Pt	PRECISION DRILLING 562 (25') (RKB)	PRECISION DRILLING 562 (25') (RKB) to Mud Line at Slot (SLOT#09 FALKEN 16C-9-L (1784'FSL & 276'FEL, SEC.11))	4835.00ft
MD Reference Pt	PRECISION DRILLING 562 (25') (RKB)	Section Origin	N 0.00, E 0.00 ft
Field Vertical Reference	Mean Sea Level	Section Azimuth	264.65°



Actual Wellpath Report

FALKEN 16C-9-L AWP

Page 2 of 11



REFERENCE WELLPATH IDENTIFICATION

Operator	SRC ENERGY	Slot	SLOT#09 FALKEN 16C-9-L (1784'FSL & 276'FEL, SEC.11)
Area	COLORADO	Well	FALKEN 16C-9-L
Field	WELD COUNTY (NAD83,TRUE NORTH)	Wellbore	FALKEN 16C-9-L AWB
Facility	SEC.11-T06N-R66W		

WELLPATH DATA (216 stations) † = interpolated/extrapolated station

MD [ft]	Inclination [°]	Azimuth [°]	TVD [ft]	Vert Sect [ft]	North [ft]	East [ft]	DLS [°/100ft]	Comments
0.00†	0.000	40.440	0.00	0.00	0.00	0.00	0.00	
25.00	0.000	40.440	25.00	0.00	0.00	0.00	0.00	
153.00	0.100	40.440	153.00	-0.08	0.09	0.07	0.08	
247.00	1.420	117.830	246.99	-1.11	-0.40	1.16	1.49	
342.00	2.180	129.570	341.94	-3.38	-2.10	3.59	0.89	
436.00	4.850	118.920	435.76	-7.93	-5.16	8.45	2.91	
526.00	7.340	119.050	525.24	-15.82	-9.79	16.80	2.77	
614.00	8.860	123.650	612.36	-25.72	-16.28	27.36	1.88	
704.00	10.150	129.150	701.13	-36.77	-25.12	39.28	1.75	
793.00	11.520	129.030	788.54	-48.71	-35.67	52.27	1.54	
883.00	13.400	129.370	876.42	-62.54	-47.95	67.31	2.09	
972.00	14.990	129.180	962.69	-78.08	-61.76	84.21	1.79	
1061.00	15.800	130.070	1048.50	-94.79	-76.83	102.40	0.95	
1151.00	15.290	126.490	1135.21	-112.23	-91.78	121.32	1.21	
1240.00	13.940	125.480	1221.33	-129.08	-104.98	139.48	1.54	
1330.00	13.570	126.500	1308.75	-145.15	-117.55	156.80	0.49	
1419.00	13.430	126.990	1395.29	-160.56	-129.98	173.45	0.20	
1509.00	13.510	127.980	1482.81	-175.94	-142.74	190.08	0.27	
1598.00	13.370	128.100	1569.38	-190.97	-155.49	206.37	0.16	
1688.00	13.090	128.960	1656.99	-205.81	-168.31	222.49	0.38	
1758.00	13.170	125.900	1725.16	-217.48	-177.97	235.11	1.00	
1831.00	12.680	121.230	1796.31	-230.17	-187.01	248.70	1.58	
1876.00	12.970	125.870	1840.19	-237.93	-192.52	257.01	2.38	
1965.00	14.900	133.750	1926.57	-252.94	-206.29	273.38	3.04	
2055.00	14.740	132.950	2013.58	-268.13	-222.10	290.12	0.29	
2144.00	14.780	128.740	2099.64	-283.81	-236.91	307.26	1.21	
2234.00	14.670	129.430	2186.69	-300.15	-251.34	325.01	0.23	
2323.00	14.460	130.090	2272.83	-315.94	-265.65	342.22	0.30	
2413.00	14.380	131.830	2359.99	-331.42	-280.34	359.14	0.49	
2502.00	14.340	137.850	2446.22	-345.54	-295.88	374.78	1.68	



Actual Wellpath Report

FALKEN 16C-9-L AWP

Page 3 of 11



REFERENCE WELLPATH IDENTIFICATION

Operator	SRC ENERGY	Slot	SLOT#09 FALKEN 16C-9-L (1784'FSL & 276'FEL, SEC.11)
Area	COLORADO	Well	FALKEN 16C-9-L
Field	WELD COUNTY (NAD83,TRUE NORTH)	Wellbore	FALKEN 16C-9-L AWP
Facility	SEC.11-T06N-R66W		

WELLPATH DATA (216 stations)

MD [ft]	Inclination [°]	Azimuth [°]	TVD [ft]	Vert Sect [ft]	North [ft]	East [ft]	DLS [°/100ft]	Comments
2592.00	14.170	140.860	2533.45	-358.34	-312.69	389.21	0.84	
2681.00	14.360	140.270	2619.70	-370.63	-329.63	403.14	0.27	
2771.00	14.440	133.440	2706.88	-384.32	-345.93	418.42	1.89	
2861.00	14.610	125.570	2794.01	-400.29	-360.25	435.80	2.20	
2950.00	14.460	119.060	2880.17	-417.94	-372.17	454.65	1.84	
3040.00	14.440	116.510	2967.33	-436.74	-382.64	474.51	0.71	
3129.00	13.450	128.570	3053.72	-453.63	-394.05	492.54	3.44	
3219.00	14.450	132.330	3141.07	-468.73	-408.14	509.03	1.50	
3308.00	14.190	128.950	3227.30	-484.01	-422.47	525.72	0.98	
3398.00	13.320	136.650	3314.73	-498.29	-436.95	541.42	2.25	
3487.00	14.320	142.570	3401.15	-510.44	-453.15	555.14	1.94	
3577.00	14.360	145.570	3488.35	-521.78	-471.19	568.22	0.83	
3666.00	15.210	136.130	3574.42	-534.41	-488.71	582.55	2.87	
3755.00	15.140	117.970	3660.36	-551.41	-502.59	600.92	5.32	
3845.00	13.770	120.650	3747.51	-569.89	-513.56	620.52	1.69	
3935.00	14.630	123.660	3834.76	-587.39	-525.32	639.19	1.26	
4024.00	15.100	108.250	3920.82	-606.75	-535.19	659.56	4.46	
4114.00	14.660	96.170	4007.82	-628.66	-540.08	682.03	3.47	
4203.00	14.660	95.030	4093.92	-650.77	-542.28	704.44	0.32	
4293.00	14.120	104.740	4181.11	-672.29	-546.07	726.41	2.74	
4382.00	14.470	125.160	4267.41	-690.95	-555.24	746.01	5.65	
4472.00	15.350	136.950	4354.40	-706.79	-570.43	763.34	3.50	
4561.00	15.300	136.480	4440.24	-721.24	-587.55	779.46	0.15	
4651.00	15.380	135.710	4527.03	-736.08	-604.70	795.97	0.24	
4740.00	15.340	137.130	4612.85	-750.67	-621.78	812.23	0.42	
4829.00	15.160	134.040	4698.72	-765.41	-638.50	828.60	0.94	
4919.00	15.210	133.720	4785.58	-780.81	-654.84	845.59	0.11	
5008.00	15.210	130.390	4871.46	-796.60	-670.47	862.92	0.98	
5098.00	14.430	127.060	4958.47	-813.12	-684.88	880.86	1.28	
5187.00	14.440	126.050	5044.66	-829.63	-698.10	898.69	0.28	



Actual Wellpath Report

FALKEN 16C-9-L AWP

Page 4 of 11



REFERENCE WELLPATH IDENTIFICATION

Operator	SRC ENERGY	Slot	SLOT#09 FALKEN 16C-9-L (1784'FSL & 276'FEL, SEC.11)
Area	COLORADO	Well	FALKEN 16C-9-L
Field	WELD COUNTY (NAD83,TRUE NORTH)	Wellbore	FALKEN 16C-9-L AWB
Facility	SEC.11-T06N-R66W		

WELLPATH DATA (216 stations)

MD [ft]	Inclination [°]	Azimuth [°]	TVD [ft]	Vert Sect [ft]	North [ft]	East [ft]	DLS [°/100ft]	Comments
5277.00	14.380	122.610	5131.83	-846.86	-710.72	917.17	0.95	
5366.00	13.850	123.670	5218.14	-863.85	-722.58	935.35	0.66	
5456.00	14.020	130.760	5305.50	-879.78	-735.68	952.57	1.91	
5546.00	14.020	133.000	5392.82	-894.58	-750.23	968.80	0.60	
5635.00	14.080	134.350	5479.16	-908.74	-765.15	984.43	0.37	
5725.00	14.200	136.710	5566.43	-922.61	-780.84	999.83	0.65	
5814.00	13.860	136.850	5652.78	-935.86	-796.56	1014.60	0.38	
5904.00	14.030	136.380	5740.12	-949.22	-812.32	1029.50	0.23	
5993.00	14.080	131.540	5826.46	-963.30	-827.31	1045.05	1.32	
6083.00	14.140	124.180	5913.75	-979.26	-840.75	1062.34	1.99	
6172.00	14.370	120.250	6000.01	-996.62	-852.42	1080.87	1.12	
6261.00	14.360	124.150	6086.23	-1014.12	-864.18	1099.54	1.09	
6351.00	14.240	124.270	6173.45	-1031.26	-876.68	1117.93	0.14	
6440.00	14.400	124.470	6259.68	-1048.19	-889.10	1136.10	0.19	
6530.00	14.400	123.010	6346.85	-1065.56	-901.53	1154.71	0.40	
6619.00	14.220	124.820	6433.09	-1082.59	-913.80	1172.96	0.54	
6709.00	11.030	137.920	6520.92	-1096.19	-926.51	1187.81	4.74	
6798.00	8.950	195.810	6608.77	-1098.79	-939.52	1191.64	11.02	
6888.00	11.560	228.340	6697.40	-1088.98	-952.27	1182.99	6.94	
6977.00	18.010	250.430	6783.47	-1068.42	-962.82	1163.33	9.50	
7067.00	24.520	257.590	6867.31	-1036.36	-971.51	1131.94	7.77	
7156.00	32.690	257.770	6945.38	-994.10	-980.58	1090.34	9.18	
7246.00	40.890	257.050	7017.40	-940.68	-992.35	1037.79	9.12	
7335.00	48.130	260.740	7080.84	-878.65	-1004.23	976.61	8.64	
7425.00	54.950	265.110	7136.80	-808.28	-1012.78	906.73	8.48	
7514.00	63.640	266.880	7182.20	-731.85	-1018.06	830.46	9.91	
7604.00	68.810	268.110	7218.47	-649.63	-1021.64	748.21	5.88	
7693.00	79.610	267.650	7242.65	-564.25	-1024.82	662.75	12.14	
7783.00	89.690	270.840	7251.04	-475.06	-1025.97	573.28	11.74	
7872.00	89.690	271.960	7251.52	-386.68	-1023.80	484.31	1.26	LANDING POINT (760'FSL & 216'FWL, SEC.12)



Actual Wellpath Report

FALKEN 16C-9-L AWP

Page 5 of 11



REFERENCE WELLPATH IDENTIFICATION

Operator	SRC ENERGY	Slot	SLOT#09 FALKEN 16C-9-L (1784'FSL & 276'FEL, SEC.11)
Area	COLORADO	Well	FALKEN 16C-9-L
Field	WELD COUNTY (NAD83,TRUE NORTH)	Wellbore	FALKEN 16C-9-L AWP
Facility	SEC.11-T06N-R66W		

WELLPATH DATA (216 stations)

MD [ft]	Inclination [°]	Azimuth [°]	TVD [ft]	Vert Sect [ft]	North [ft]	East [ft]	DLS [°/100ft]	Comments
7962.00	89.660	271.900	7252.03	-297.40	-1020.77	394.36	0.07	
8051.00	89.780	271.370	7252.46	-209.07	-1018.23	305.40	0.61	
8141.00	89.820	270.730	7252.78	-119.63	-1016.58	215.42	0.71	
8230.00	89.660	270.130	7253.18	-31.08	-1015.91	126.42	0.70	
8320.00	89.720	268.820	7253.67	58.59	-1016.74	36.43	1.46	
8409.00	89.750	268.350	7254.08	147.38	-1018.93	-52.54	0.53	
8498.00	89.660	268.530	7254.54	236.19	-1021.36	-141.51	0.23	
8588.00	89.850	268.890	7254.92	325.96	-1023.38	-231.49	0.45	
8678.00	89.820	268.320	7255.18	415.74	-1025.57	-321.46	0.63	
8767.00	89.600	267.570	7255.63	504.60	-1028.77	-410.40	0.88	
8857.00	89.690	266.340	7256.19	594.52	-1033.55	-500.27	1.37	
8946.00	89.660	265.960	7256.70	683.49	-1039.52	-589.07	0.43	
9036.00	89.820	266.320	7257.11	773.45	-1045.58	-678.86	0.44	
9125.00	89.820	266.880	7257.38	862.40	-1050.86	-767.70	0.63	
9215.00	89.630	267.020	7257.82	952.33	-1055.65	-857.58	0.26	
9304.00	89.910	268.150	7258.17	1041.21	-1059.40	-946.49	1.31	
9394.00	90.550	269.750	7257.81	1130.95	-1061.05	-1036.48	1.91	
9483.00	90.180	269.850	7257.25	1219.59	-1061.36	-1125.47	0.43	
9572.00	90.120	268.240	7257.01	1308.32	-1062.84	-1214.46	1.81	
9662.00	90.280	266.600	7256.70	1398.21	-1066.89	-1304.36	1.83	
9751.00	90.280	267.570	7256.26	1487.13	-1071.42	-1393.24	1.09	
9841.00	90.090	269.050	7255.97	1576.95	-1074.07	-1483.20	1.66	
9930.00	89.660	267.500	7256.17	1665.76	-1076.75	-1572.16	1.81	
10020.00	89.780	267.990	7256.61	1755.63	-1080.29	-1662.09	0.56	
10109.00	89.600	270.280	7257.09	1844.35	-1081.64	-1751.07	2.58	
10199.00	90.090	273.520	7257.33	1933.62	-1078.65	-1841.01	3.64	
10289.00	87.940	271.890	7258.88	2022.71	-1074.41	-1930.89	3.00	
10378.00	88.280	275.690	7261.82	2110.51	-1068.53	-2019.63	4.28	
10468.00	88.430	278.660	7264.40	2198.32	-1057.29	-2108.88	3.30	
10557.00	88.340	280.670	7266.91	2284.24	-1042.36	-2196.57	2.26	



Actual Wellpath Report

FALKEN 16C-9-L AWP

Page 6 of 11



REFERENCE WELLPATH IDENTIFICATION

Operator	SRC ENERGY	Slot	SLOT#09 FALKEN 16C-9-L (1784'FSL & 276'FEL, SEC.11)
Area	COLORADO	Well	FALKEN 16C-9-L
Field	WELD COUNTY (NAD83,TRUE NORTH)	Wellbore	FALKEN 16C-9-L AWP
Facility	SEC.11-T06N-R66W		

WELLPATH DATA (216 stations)

MD [ft]	Inclination [°]	Azimuth [°]	TVD [ft]	Vert Sect [ft]	North [ft]	East [ft]	DLS [°/100ft]	Comments
10647.00	88.220	275.240	7269.61	2371.76	-1029.91	-2285.63	6.03	
10736.00	88.340	271.950	7272.28	2459.62	-1024.33	-2374.41	3.70	
10826.00	89.510	271.770	7273.97	2548.89	-1021.41	-2464.34	1.32	
10915.00	89.660	272.130	7274.62	2637.17	-1018.38	-2553.29	0.44	
11005.00	89.690	272.280	7275.13	2726.38	-1014.92	-2643.22	0.17	
11094.00	89.540	274.410	7275.73	2814.35	-1009.73	-2732.06	2.40	
11184.00	89.600	272.250	7276.40	2903.31	-1004.50	-2821.90	2.40	
11273.00	89.570	268.720	7277.05	2991.83	-1003.75	-2910.88	3.97	
11363.00	89.570	268.510	7277.72	3081.62	-1005.92	-3000.85	0.23	
11452.00	89.600	269.920	7278.37	3170.33	-1007.14	-3089.84	1.58	
11542.00	89.570	270.830	7279.02	3259.88	-1006.55	-3179.83	1.01	
11631.00	90.490	271.730	7278.97	3348.28	-1004.57	-3268.81	1.45	
11721.00	90.490	270.100	7278.20	3437.73	-1003.13	-3358.79	1.81	
11810.00	90.520	268.860	7277.42	3526.41	-1003.94	-3447.78	1.39	
11900.00	89.540	269.890	7277.37	3616.10	-1004.92	-3537.78	1.58	
11989.00	89.720	271.110	7277.94	3704.64	-1004.14	-3626.77	1.39	
12080.00	89.690	270.630	7278.41	3795.10	-1002.76	-3717.76	0.53	
12170.00	89.510	271.290	7279.04	3884.55	-1001.25	-3807.74	0.76	
12259.00	89.690	270.710	7279.66	3973.00	-999.70	-3896.73	0.68	
12349.00	89.540	270.010	7280.27	4062.55	-999.13	-3986.72	0.80	
12439.00	89.660	269.510	7280.90	4152.19	-999.51	-4076.72	0.57	
12528.00	89.510	268.260	7281.54	4240.94	-1001.24	-4165.70	1.41	
12618.00	89.420	267.540	7282.38	4330.79	-1004.54	-4255.63	0.81	
12707.00	89.420	266.180	7283.28	4419.72	-1009.42	-4344.49	1.53	
12796.00	89.480	266.090	7284.14	4508.69	-1015.41	-4433.28	0.12	
12886.00	89.480	267.210	7284.95	4598.63	-1020.67	-4523.13	1.24	
12975.00	89.600	268.230	7285.67	4687.49	-1024.21	-4612.05	1.15	
13065.00	89.320	268.950	7286.52	4777.28	-1026.43	-4702.02	0.86	
13154.00	89.380	270.040	7287.53	4865.95	-1027.21	-4791.01	1.23	
13244.00	89.570	270.970	7288.35	4955.48	-1026.42	-4881.00	1.05	



Actual Wellpath Report

FALKEN 16C-9-L AWP

Page 7 of 11



REFERENCE WELLPATH IDENTIFICATION

Operator	SRC ENERGY	Slot	SLOT#09 FALKEN 16C-9-L (1784'FSL & 276'FEL, SEC.11)
Area	COLORADO	Well	FALKEN 16C-9-L
Field	WELD COUNTY (NAD83,TRUE NORTH)	Wellbore	FALKEN 16C-9-L AWB
Facility	SEC.11-T06N-R66W		

WELLPATH DATA (216 stations)

MD [ft]	Inclination [°]	Azimuth [°]	TVD [ft]	Vert Sect [ft]	North [ft]	East [ft]	DLS [°/100ft]	Comments
13333.00	89.600	272.550	7288.99	5043.79	-1023.69	-4969.95	1.78	
13423.00	89.720	273.800	7289.53	5132.79	-1018.70	-5059.81	1.40	
13512.00	89.720	272.930	7289.96	5220.76	-1013.48	-5148.66	0.98	
13601.00	89.660	270.950	7290.45	5309.03	-1010.46	-5237.60	2.23	
13691.00	90.460	270.530	7290.35	5398.52	-1009.30	-5327.59	1.00	
13780.00	90.620	272.720	7289.51	5486.85	-1006.78	-5416.55	2.47	
13870.00	90.430	273.080	7288.69	5575.92	-1002.23	-5506.43	0.45	
13959.00	90.340	271.100	7288.09	5664.16	-998.98	-5595.36	2.23	
14049.00	90.580	270.490	7287.37	5753.64	-997.73	-5685.35	0.73	
14138.00	90.400	270.380	7286.61	5842.18	-997.06	-5774.34	0.24	
14228.00	91.450	272.440	7285.15	5931.54	-994.84	-5864.30	2.57	
14317.00	91.540	270.990	7282.83	6019.83	-992.18	-5953.23	1.63	
14407.00	90.980	268.320	7280.85	6109.46	-992.72	-6043.19	3.03	
14497.00	90.250	268.500	7279.89	6199.26	-995.22	-6133.15	0.84	
14587.00	89.290	270.470	7280.25	6288.93	-996.03	-6223.14	2.43	
14676.00	89.020	272.100	7281.56	6377.32	-994.03	-6312.11	1.86	
14765.00	88.710	272.810	7283.32	6465.48	-990.22	-6401.01	0.87	
14855.00	88.460	271.440	7285.54	6554.68	-986.88	-6490.92	1.55	
14944.00	88.400	268.730	7287.98	6643.24	-986.75	-6579.88	3.04	
15034.00	89.720	267.870	7289.46	6733.04	-989.42	-6669.82	1.75	
15123.00	90.650	268.700	7289.17	6821.86	-992.09	-6758.78	1.40	
15213.00	90.280	266.690	7288.44	6911.72	-995.70	-6848.70	2.27	
15302.00	90.400	266.030	7287.91	7000.68	-1001.35	-6937.52	0.75	
15392.00	90.280	265.730	7287.38	7090.66	-1007.82	-7027.28	0.36	
15481.00	90.180	267.190	7287.02	7179.61	-1013.32	-7116.11	1.64	
15571.00	90.280	269.180	7286.66	7269.43	-1016.17	-7206.06	2.21	
15660.00	90.120	269.860	7286.35	7358.11	-1016.91	-7295.05	0.78	
15750.00	90.310	270.060	7286.01	7447.72	-1016.97	-7385.05	0.31	
15839.00	89.970	269.720	7285.80	7536.35	-1017.15	-7474.05	0.54	
15929.00	89.850	269.110	7285.94	7626.04	-1018.06	-7564.05	0.69	



Actual Wellpath Report

FALKEN 16C-9-L AWP

Page 8 of 11



REFERENCE WELLPATH IDENTIFICATION

Operator	SRC ENERGY	Slot	SLOT#09 FALKEN 16C-9-L (1784'FSL & 276'FEL, SEC.11)
Area	COLORADO	Well	FALKEN 16C-9-L
Field	WELD COUNTY (NAD83,TRUE NORTH)	Wellbore	FALKEN 16C-9-L AWP
Facility	SEC.11-T06N-R66W		

WELLPATH DATA (216 stations)

MD [ft]	Inclination [°]	Azimuth [°]	TVD [ft]	Vert Sect [ft]	North [ft]	East [ft]	DLS [°/100ft]	Comments
16018.00	90.090	268.010	7285.98	7714.83	-1020.30	-7653.02	1.27	
16107.00	90.280	268.930	7285.70	7803.63	-1022.68	-7741.99	1.06	
16197.00	90.120	269.460	7285.38	7893.35	-1023.94	-7831.98	0.62	
16286.00	90.220	271.350	7285.12	7981.89	-1023.31	-7920.97	2.13	
16376.00	90.150	271.210	7284.83	8071.29	-1021.30	-8010.95	0.17	
16466.00	90.180	269.350	7284.57	8160.85	-1020.86	-8100.94	2.07	
16555.00	90.000	269.310	7284.43	8249.55	-1021.90	-8189.93	0.21	
16644.00	89.910	271.090	7284.50	8338.13	-1021.59	-8278.93	2.00	
16734.00	89.910	272.760	7284.64	8427.40	-1018.57	-8368.88	1.86	
16823.00	90.090	274.240	7284.64	8515.34	-1013.14	-8457.71	1.68	
16913.00	91.420	274.250	7283.45	8604.07	-1006.47	-8547.45	1.48	
17002.00	91.200	272.620	7281.42	8692.00	-1001.14	-8636.26	1.85	
17092.00	91.320	272.520	7279.44	8781.12	-997.11	-8726.15	0.17	
17182.00	90.650	271.560	7277.89	8870.36	-993.91	-8816.08	1.30	
17271.00	89.850	270.380	7277.50	8958.81	-992.40	-8905.06	1.60	
17361.00	89.910	269.570	7277.69	9048.42	-992.44	-8995.06	0.90	
17450.00	90.180	267.910	7277.62	9137.19	-994.40	-9084.04	1.89	
17540.00	89.940	267.430	7277.53	9227.07	-998.05	-9173.96	0.60	
17629.00	89.880	268.400	7277.67	9315.92	-1001.29	-9262.90	1.09	
17719.00	90.060	270.180	7277.72	9405.62	-1002.41	-9352.89	1.99	
17808.00	90.030	268.180	7277.65	9494.34	-1003.68	-9441.88	2.25	
17898.00	90.650	268.540	7277.11	9584.15	-1006.26	-9531.84	0.80	
17987.00	90.680	269.380	7276.08	9672.89	-1007.87	-9620.82	0.94	
18077.00	89.970	271.160	7275.57	9762.45	-1007.45	-9710.81	2.13	
18166.00	90.620	272.270	7275.11	9850.77	-1004.79	-9799.77	1.45	
18256.00	90.680	274.900	7274.09	9939.66	-999.16	-9889.58	2.92	
18345.00	90.890	273.890	7272.87	10027.37	-992.34	-9978.31	1.16	
18434.00	90.550	270.850	7271.75	10115.54	-988.66	-10067.21	3.44	
18524.00	89.110	268.790	7272.02	10205.17	-988.94	-10157.21	2.79	
18613.00	90.030	267.630	7272.69	10293.99	-991.72	-10246.16	1.66	



Actual Wellpath Report

FALKEN 16C-9-L AWP

Page 9 of 11



REFERENCE WELLPATH IDENTIFICATION

Operator	SRC ENERGY	Slot	SLOT#09 FALKEN 16C-9-L (1784'FSL & 276'FEL, SEC.11)
Area	COLORADO	Well	FALKEN 16C-9-L
Field	WELD COUNTY (NAD83,TRUE NORTH)	Wellbore	FALKEN 16C-9-L AWB
Facility	SEC.11-T06N-R66W		

WELLPATH DATA (216 stations)

MD [ft]	Inclination [°]	Azimuth [°]	TVD [ft]	Vert Sect [ft]	North [ft]	East [ft]	DLS [°/100ft]	Comments
18703.00	90.090	267.360	7272.59	10383.88	-995.66	-10336.07	0.31	
18792.00	89.450	266.230	7272.95	10472.82	-1000.63	-10424.93	1.46	
18881.00	89.720	266.720	7273.59	10561.77	-1006.10	-10513.76	0.63	
18971.00	89.600	268.120	7274.13	10651.66	-1010.15	-10603.66	1.56	
19069.00	89.410	270.260	7274.97	10749.34	-1011.54	-10701.64	2.19	LAST BHGE MWD SURVEY (752'FSL & 304'FEL, SEC.09)
19093.00	89.410	270.260	7275.22	10773.23	-1011.43	-10725.64	0.00	PROJECTION TO BIT (752'FSL & 328'FEL, SEC.09)

HOLE & CASING SECTIONS - Ref Wellbore: FALKEN 16C-9-L AWB Ref Wellpath: FALKEN 16C-9-L AWP

String/Diameter	Start MD [ft]	End MD [ft]	Interval [ft]	Start TVD [ft]	End TVD [ft]	Start N/S [ft]	Start E/W [ft]	End N/S [ft]	End E/W [ft]
13.5in Open Hole	25.00	1801.00	1776.00	25.00	1767.05	0.00	0.00	-183.47	243.09
9.625in Casing Surface	25.00	1801.00	1776.00	25.00	1767.05	0.00	0.00	-183.47	243.09
8.5in Open Hole	1801.00	19093.00	17292.00	1767.05	7275.22	-183.47	243.09	-1011.43	-10725.64



Actual Wellpath Report

FALKEN 16C-9-L AWP

Page 10 of 11



REFERENCE WELLPATH IDENTIFICATION

Operator	SRC ENERGY	Slot	SLOT#09 FALKEN 16C-9-L (1784'FSL & 276'FEL, SEC.11)
Area	COLORADO	Well	FALKEN 16C-9-L
Field	WELD COUNTY (NAD83, TRUE NORTH)	Wellbore	FALKEN 16C-9-L AWB
Facility	SEC.11-T06N-R66W		

TARGETS

Name	TVD [ft]	North [ft]	East [ft]	Grid East [US ft]	Grid North [US ft]	Latitude	Longitude	Shape
SEC.10-T6N-R66W	0.00	119.86	1.11	3212478.20	1426196.25	40°30'02.869"N	104°44'09.402"W	polygon
SEC.11-T6N-R66W SOUTHERN HALF	0.00	119.86	1.11	3212478.20	1426196.25	40°30'02.869"N	104°44'09.402"W	polygon
SEC.14-T6N-R66W NORTHERN HALF	0.00	119.86	1.11	3212478.20	1426196.25	40°30'02.869"N	104°44'09.402"W	polygon
SEC.9-T6N-R66W EAST QUARTER	0.00	119.86	1.11	3212478.20	1426196.25	40°30'02.869"N	104°44'09.402"W	polygon
FALKEN 16C-9-L TOP OF PROD ON PLAT (750'FSL & 300'FWL, SEC.12)	7235.00	-1033.93	568.48	3213055.47	1425047.43	40°29'51.468"N	104°44'02.058"W	circle
FALKEN 16C-9-L TOP OF PROD REV-2 (750'FSL & 300'FWL, SEC.12)	7252.94	-1033.93	568.48	3213055.47	1425047.43	40°29'51.468"N	104°44'02.058"W	circle
FALKEN 16C-9-L BHL ON PLAT (761'FSL & 300'FEL, SEC.09)	7259.00	-1002.47	-10697.56	3201789.98	1424981.82	40°29'51.756"N	104°46'27.887"W	circle
FALKEN 16C-9-L BHL REV-2 (761'FSL & 300'FEL, SEC.09)	7263.93	-1002.47	-10697.56	3201789.98	1424981.82	40°29'51.756"N	104°46'27.887"W	circle

WELLPATH COMPOSITION - Ref Wellbore: FALKEN 16C-9-L AWB Ref Wellpath: FALKEN 16C-9-L AWP

Start MD [ft]	End MD [ft]	Positional Uncertainty Model	Log Name/Comment	Wellbore
25.00	1758.00	Custom BHI NaviTrak (Standard Rotating+Axial Corr) (Rockies 0.03Gt model)	13 1/2" APS EM SURVEYS <153'-1758>	FALKEN 16C-9-L AWB
1758.00	19069.00	BHI AutoTrak Curve (IFR1, Short)	8 1/2" ATC SURVEYS <1831'-19069'>	FALKEN 16C-9-L AWB
19069.00	19093.00	Blind Drilling (std)	Projection to bit	FALKEN 16C-9-L AWB



Actual Wellpath Report

FALKEN 16C-9-L AWP

Page 11 of 11



REFERENCE WELLPATH IDENTIFICATION

Operator	SRC ENERGY	Slot	SLOT#09 FALKEN 16C-9-L (1784'FSL & 276'FEL, SEC.11)
Area	COLORADO	Well	FALKEN 16C-9-L
Field	WELD COUNTY (NAD83,TRUE NORTH)	Wellbore	FALKEN 16C-9-L AWB
Facility	SEC.11-T06N-R66W		

WELLPATH COMMENTS

MD [ft]	Inclination [°]	Azimuth [°]	TVD [ft]	Comment
7872.00	89.690	271.960	7251.52	LANDING POINT (760'FSL & 216'FWL, SEC.12)
19069.00	89.410	270.260	7274.97	LAST BHGE MWD SURVEY (752'FSL & 304'FEL, SEC.09)
19093.00	89.410	270.260	7275.22	PROJECTION TO BIT (752'FSL & 328'FEL, SEC.09)