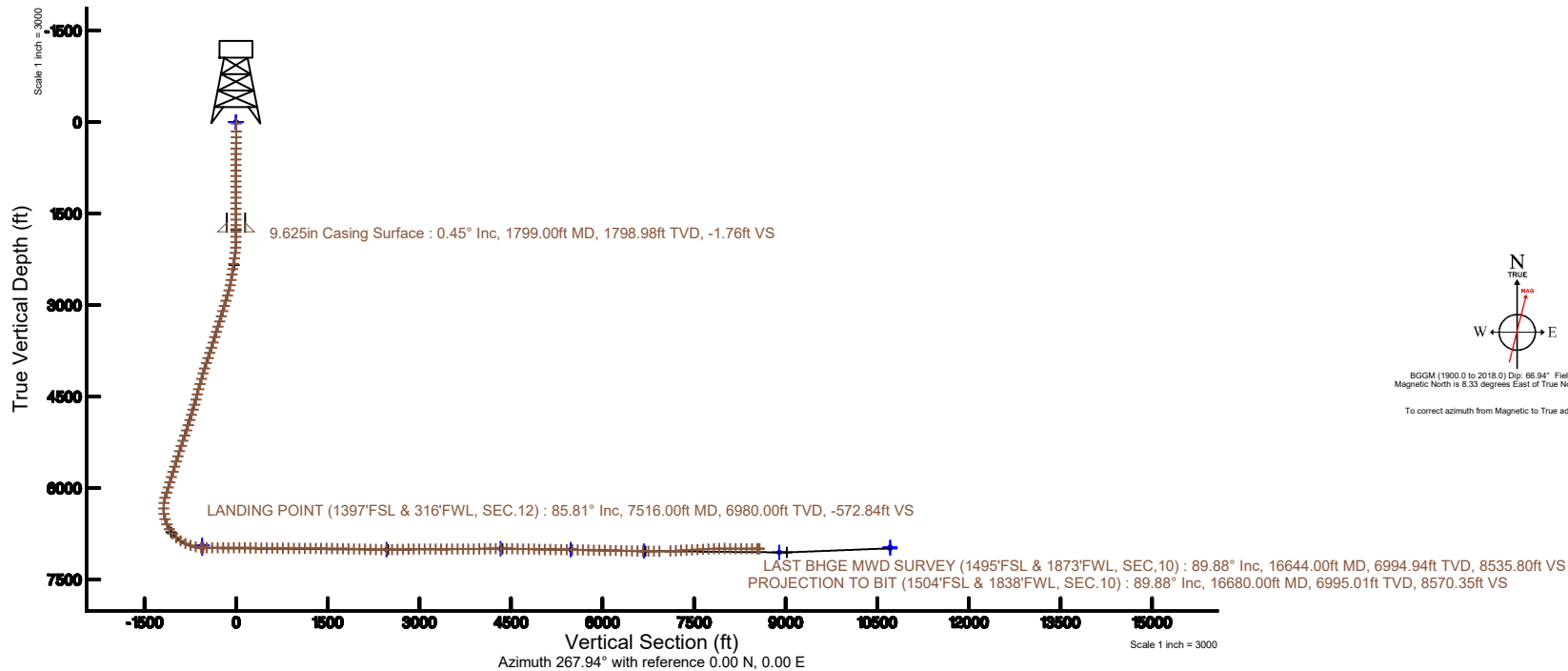
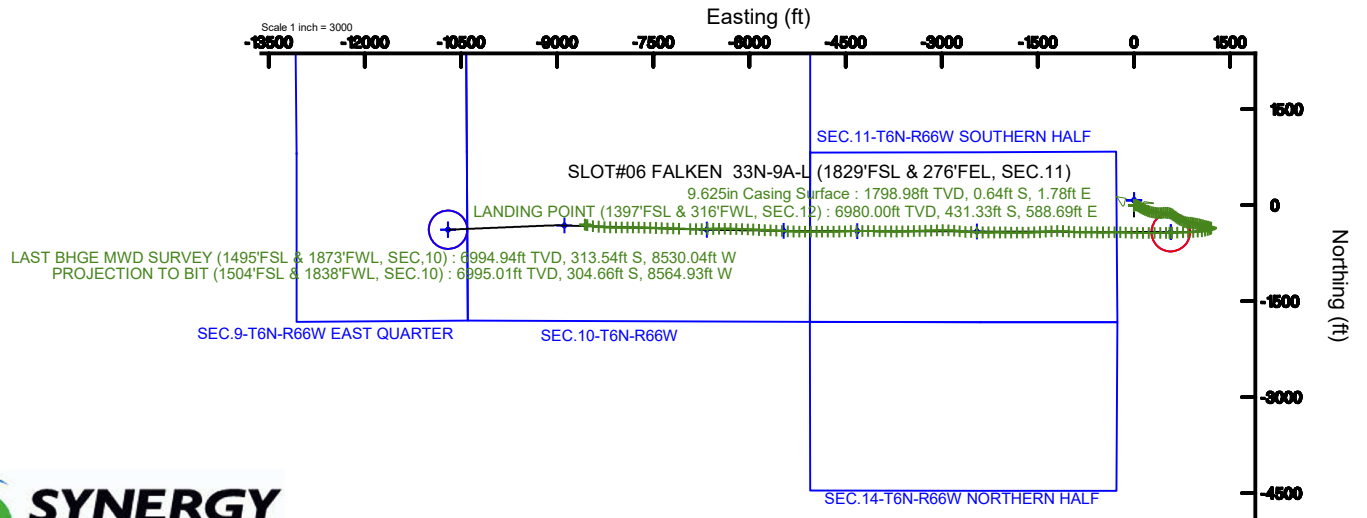


SRC ENERGY

Location: COLORADO Slot: SLOT#06 FALKEN 33N-9A-L (1829'FSL & 276'FEL, SEC.11)
 Field: WELD COUNTY (NAD83, TRUE NORTH) Well: FALKEN 33N-9A-L
 Facility: SEC.11-T06N-R66W Wellbore: FALKEN 33N-9A-L PWB

Plot reference wellpath is FALKEN 33N-9A-L PWP (REV-C.0)	Grid System: NAD83 / Lambert Colorado SP, Northern Zone (501), US feet
True vertical depths are referenced to PRECISION DRILLING 562 (25') (RKB)	* = Wellpath was transformed from a different geodetic datum
Measured depths are referenced to PRECISION DRILLING 562 (25') (RKB)	North Reference: True north
PRECISION DRILLING 562 (25') (RKB) to Mean Sea Level: 4835 feet	Scale: True distance
Mean Sea Level to Mud line (At Slot: SLOT#06 FALKEN 33N-9A-L (1829'FSL & 276'FEL, SEC.11)): 0 feet	Depths are in feet
Coordinates are in feet referenced to Slot	Created by: doddanna on 2018-02-07
	Database: WellArchitectDB





Actual Wellpath Report

FALKEN 33N-9A-L AWP

Page 1 of 10



REFERENCE WELLPATH IDENTIFICATION

Operator	SRC ENERGY	Slot	SLOT#06 FALKEN 33N-9A-L (1829'FSL & 276'FEL, SEC.11)
Area	COLORADO	Well	FALKEN 33N-9A-L
Field	WELD COUNTY (NAD83,TRUE NORTH)	Wellbore	FALKEN 33N-9A-L AWB
Facility	SEC.11-T06N-R66W		

REPORT SETUP INFORMATION

Projection System	NAD83 / Lambert Colorado SP, Northern Zone (501), US feet	Software System	WellArchitect® 5.0
North Reference	True	User	Doddanna
Scale	0.999966	Report Generated	2/7/2018 at 1:53:34 PM
Convergence at slot	0.49° East	Database/Source file	WellArchitectDB/FALKEN_33N-9A-L_AWP.xml

WELLPATH LOCATION

	Local coordinates		Grid coordinates		Geographic coordinates	
	North[ft]	East[ft]	Easting[US ft]	Northing[US ft]	Latitude	Longitude
Slot Location	-75.01	-0.54	3212478.31	1426121.24	40°30'02.128"N	104°44'09.409"W
Facility Reference Pt			3212478.20	1426196.25	40°30'02.869"N	104°44'09.402"W
Field Reference Pt			3171284.48	1426358.81	40°30'07.643"N	104°53'02.634"W

WELLPATH DATUM

Calculation method	Minimum curvature	PRECISION DRILLING 562 (25') (RKB) to Facility Vertical Datum	4835.00ft
Horizontal Reference Pt	Slot	PRECISION DRILLING 562 (25') (RKB) to Mean Sea Level	4835.00ft
Vertical Reference Pt	PRECISION DRILLING 562 (25') (RKB)	PRECISION DRILLING 562 (25') (RKB) to Mud Line at Slot (SLOT#06 FALKEN 33N-9A-L (1829'FSL & 276'FEL, SEC.11))	4835.00ft
MD Reference Pt	PRECISION DRILLING 562 (25') (RKB)	Section Origin	N 0.00, E 0.00 ft
Field Vertical Reference	Mean Sea Level	Section Azimuth	267.94°



Actual Wellpath Report

FALKEN 33N-9A-L AWP

Page 2 of 10



REFERENCE WELLPATH IDENTIFICATION

Operator	SRC ENERGY	Slot	SLOT#06 FALKEN 33N-9A-L (1829'FSL & 276'FEL, SEC.11)
Area	COLORADO	Well	FALKEN 33N-9A-L
Field	WELD COUNTY (NAD83,TRUE NORTH)	Wellbore	FALKEN 33N-9A-L AWB
Facility	SEC.11-T06N-R66W		

WELLPATH DATA (188 stations) † = interpolated/extrapolated station

MD [ft]	Inclination [°]	Azimuth [°]	TVD [ft]	Vert Sect [ft]	North [ft]	East [ft]	DLS [°/100ft]	Comments
0.00†	0.000	349.020	0.00	0.00	0.00	0.00	0.00	
25.00	0.000	349.020	25.00	0.00	0.00	0.00	0.00	
153.00	0.100	349.020	153.00	0.02	0.11	-0.02	0.08	
247.00	0.260	169.090	247.00	0.00	-0.02	0.00	0.38	
342.00	0.500	135.780	342.00	-0.31	-0.53	0.33	0.33	
436.00	0.300	107.450	436.00	-0.82	-0.90	0.85	0.29	
526.00	0.400	112.350	525.99	-1.33	-1.09	1.37	0.12	
614.00	0.270	117.450	613.99	-1.79	-1.30	1.84	0.15	
704.00	0.310	113.780	703.99	-2.19	-1.49	2.25	0.05	
793.00	0.070	340.080	792.99	-2.39	-1.54	2.45	0.41	
883.00	0.250	223.890	882.99	-2.24	-1.63	2.30	0.32	
972.00	0.200	278.400	971.99	-1.94	-1.75	2.01	0.24	
1061.00	0.120	99.070	1060.99	-1.88	-1.74	1.95	0.36	
1151.00	0.060	296.710	1150.99	-1.93	-1.73	2.00	0.20	
1240.00	0.070	39.600	1239.99	-1.93	-1.67	1.99	0.11	
1330.00	0.210	164.470	1329.99	-2.00	-1.79	2.07	0.29	
1419.00	0.260	279.300	1418.99	-1.84	-1.91	1.91	0.45	
1509.00	0.090	194.380	1508.99	-1.62	-1.95	1.69	0.30	
1598.00	0.200	8.780	1597.99	-1.63	-1.86	1.70	0.33	
1688.00	0.370	352.710	1687.99	-1.64	-1.42	1.69	0.21	
1753.00	0.420	4.730	1752.99	-1.64	-0.97	1.68	0.15	
1878.00	0.640	54.760	1877.98	-2.28	-0.11	2.29	0.39	
1968.00	2.310	87.600	1967.95	-4.52	0.25	4.51	2.01	
2057.00	4.300	90.150	2056.80	-9.65	0.32	9.64	2.24	
2147.00	6.430	89.240	2146.40	-18.06	0.38	18.05	2.37	
2236.00	8.280	95.950	2234.66	-29.39	-0.22	29.41	2.29	
2326.00	9.730	107.840	2323.56	-42.96	-3.22	43.10	2.61	
2415.00	10.300	115.980	2411.21	-57.05	-9.01	57.41	1.71	
2505.00	9.660	122.010	2499.85	-70.41	-16.54	71.05	1.36	
2594.00	11.500	127.760	2587.33	-83.41	-25.93	84.40	2.38	



Actual Wellpath Report

FALKEN 33N-9A-L AWP

Page 3 of 10



REFERENCE WELLPATH IDENTIFICATION

Operator	SRC ENERGY	Slot	SLOT#06 FALKEN 33N-9A-L (1829'FSL & 276'FEL, SEC.11)
Area	COLORADO	Well	FALKEN 33N-9A-L
Field	WELD COUNTY (NAD83,TRUE NORTH)	Wellbore	FALKEN 33N-9A-L AWB
Facility	SEC.11-T06N-R66W		

WELLPATH DATA (188 stations)

MD [ft]	Inclination [°]	Azimuth [°]	TVD [ft]	Vert Sect [ft]	North [ft]	East [ft]	DLS [°/100ft]	Comments
2683.00	13.720	124.460	2674.18	-98.71	-37.34	100.11	2.62	
2773.00	17.210	121.300	2760.91	-118.42	-50.30	120.30	3.99	
2862.00	18.080	117.420	2845.73	-141.44	-63.50	143.81	1.64	
2952.00	17.880	109.230	2931.34	-166.47	-74.48	169.25	2.82	
3041.00	17.910	107.210	3016.04	-192.12	-83.03	195.23	0.70	
3130.00	17.950	110.550	3100.72	-217.70	-91.89	221.14	1.16	
3220.00	18.000	108.760	3186.33	-243.50	-101.24	247.29	0.62	
3309.00	17.860	105.080	3271.01	-269.40	-109.21	273.49	1.28	
3399.00	17.970	101.790	3356.65	-296.07	-115.64	300.41	1.13	
3489.00	17.910	99.900	3442.27	-323.09	-120.85	327.63	0.65	
3578.00	17.780	95.150	3526.99	-349.96	-124.42	354.65	1.64	
3668.00	17.740	89.200	3612.71	-377.30	-125.47	382.05	2.02	
3757.00	17.960	85.820	3697.43	-404.57	-124.28	409.29	1.19	
3847.00	18.060	87.020	3783.02	-432.39	-122.54	437.06	0.43	
3936.00	18.100	87.060	3867.63	-460.00	-121.11	464.65	0.05	
4025.00	18.290	90.040	3952.18	-487.78	-120.42	492.42	1.07	
4115.00	18.090	95.520	4037.69	-515.75	-121.77	520.45	1.91	
4204.00	17.980	102.180	4122.32	-542.76	-126.00	547.64	2.32	
4294.00	18.150	113.300	4207.91	-568.90	-134.47	574.10	3.83	
4384.00	17.920	122.280	4293.51	-593.01	-147.42	598.68	3.10	
4473.00	18.010	126.320	4378.17	-615.10	-162.88	621.34	1.40	
4563.00	17.990	128.640	4463.77	-636.55	-179.80	643.41	0.80	
4652.00	18.010	127.950	4548.41	-657.51	-196.84	665.00	0.24	
4742.00	19.420	123.850	4633.65	-680.28	-213.73	688.39	2.14	
4831.00	19.110	115.510	4717.69	-705.19	-228.25	713.84	3.11	
4921.00	19.410	114.570	4802.65	-731.62	-240.82	740.73	0.48	
5010.00	19.290	116.220	4886.62	-757.78	-253.46	767.37	0.63	
5099.00	19.430	107.810	4970.61	-784.66	-264.48	794.66	3.13	
5189.00	19.340	98.740	5055.52	-813.38	-271.33	823.65	3.34	
5278.00	19.180	94.020	5139.55	-842.40	-274.59	852.80	1.76	



SRC ENERGY

Actual Wellpath Report

FALKEN 33N-9A-L AWP

Page 4 of 10



REFERENCE WELLPATH IDENTIFICATION

Operator	SRC ENERGY	Slot	SLOT#06 FALKEN 33N-9A-L (1829'FSL & 276'FEL, SEC.11)
Area	COLORADO	Well	FALKEN 33N-9A-L
Field	WELD COUNTY (NAD83,TRUE NORTH)	Wellbore	FALKEN 33N-9A-L AWB
Facility	SEC.11-T06N-R66W		

WELLPATH DATA (188 stations)

MD [ft]	Inclination [°]	Azimuth [°]	TVD [ft]	Vert Sect [ft]	North [ft]	East [ft]	DLS [°/100ft]	Comments
5368.00	18.970	93.920	5224.61	-871.65	-276.63	882.14	0.24	
5457.00	17.420	97.780	5309.16	-899.16	-279.42	909.77	2.21	
5547.00	17.500	102.150	5395.01	-925.56	-284.09	936.35	1.46	
5637.00	18.620	103.280	5480.58	-952.53	-290.24	963.56	1.30	
5726.00	18.290	102.130	5565.00	-979.77	-296.44	991.05	0.55	
5816.00	18.090	101.960	5650.50	-1007.02	-302.30	1018.52	0.23	
5905.00	18.480	102.550	5735.01	-1034.08	-308.23	1045.81	0.49	
5995.00	18.530	106.980	5820.36	-1061.40	-315.51	1073.41	1.56	
6084.00	17.330	107.580	5905.04	-1087.26	-323.64	1099.57	1.36	
6174.00	17.670	103.470	5990.87	-1113.04	-330.87	1125.64	1.42	
6263.00	17.650	103.080	6075.68	-1139.08	-337.07	1151.92	0.13	
6353.00	17.330	107.640	6161.52	-1164.87	-344.22	1177.98	1.56	
6442.00	9.600	125.630	6248.05	-1183.26	-352.58	1196.68	9.78	
6532.00	5.600	190.000	6337.38	-1188.29	-361.29	1202.03	9.74	
6621.00	8.900	239.800	6425.73	-1181.31	-369.04	1195.32	7.63	
6711.00	16.070	247.790	6513.55	-1163.45	-377.26	1177.74	8.18	
6801.00	23.950	252.300	6598.06	-1134.12	-387.54	1148.76	8.92	
6890.00	31.850	256.980	6676.66	-1093.60	-398.34	1108.60	9.20	
6979.00	39.940	262.810	6748.72	-1041.99	-407.23	1057.28	9.86	
7069.00	47.770	266.040	6813.58	-979.81	-413.15	995.27	9.05	
7158.00	56.890	266.550	6867.91	-909.47	-417.68	925.05	10.26	
7248.00	65.730	267.050	6911.07	-830.61	-422.07	846.30	9.83	
7337.00	72.550	268.320	6942.74	-747.50	-425.41	763.25	7.78	
7427.00	76.780	267.800	6966.54	-660.72	-428.35	676.52	4.73	
7516.00	85.810	268.300	6980.00	-572.84	-431.33	588.69	10.16	LANDING POINT (1397'FSL & 316'FWL, SEC.12)
7550.00	89.720	268.990	6981.32	-538.87	-432.14	554.73	11.68	
7606.00	89.630	269.270	6981.64	-482.89	-432.99	498.74	0.53	
7695.00	90.030	269.790	6981.90	-393.92	-433.72	409.74	0.74	
7784.00	89.780	269.050	6982.05	-304.95	-434.62	320.75	0.88	
7874.00	89.910	270.470	6982.30	-215.00	-435.00	230.75	1.58	



Actual Wellpath Report

FALKEN 33N-9A-L AWP

Page 5 of 10



REFERENCE WELLPATH IDENTIFICATION

Operator	SRC ENERGY	Slot	SLOT#06 FALKEN 33N-9A-L (1829'FSL & 276'FEL, SEC.11)
Area	COLORADO	Well	FALKEN 33N-9A-L
Field	WELD COUNTY (NAD83,TRUE NORTH)	Wellbore	FALKEN 33N-9A-L AWB
Facility	SEC.11-T06N-R66W		

WELLPATH DATA (188 stations)

MD [ft]	Inclination [°]	Azimuth [°]	TVD [ft]	Vert Sect [ft]	North [ft]	East [ft]	DLS [°/100ft]	Comments
7963.00	89.720	271.070	6982.58	-126.11	-433.80	141.76	0.71	
8053.00	89.940	270.300	6982.85	-36.21	-432.72	51.77	0.89	
8142.00	89.940	271.330	6982.94	52.68	-431.46	-37.22	1.16	
8232.00	89.910	273.100	6983.06	142.42	-427.98	-127.15	1.97	
8321.00	89.630	271.810	6983.42	231.14	-424.17	-216.07	1.48	
8410.00	89.510	269.190	6984.09	320.04	-423.39	-305.05	2.95	
8500.00	89.510	268.170	6984.86	410.03	-425.46	-395.02	1.13	
8589.00	89.600	269.350	6985.55	499.02	-427.39	-484.00	1.33	
8679.00	89.320	271.730	6986.40	588.92	-426.54	-573.98	2.66	
8768.00	89.450	270.030	6987.35	677.79	-425.17	-662.96	1.92	
8858.00	89.510	268.870	6988.17	767.75	-426.04	-752.96	1.29	
8947.00	89.510	271.370	6988.93	856.68	-425.85	-841.94	2.81	
9037.00	89.540	274.390	6989.68	946.33	-421.33	-931.82	3.36	
9126.00	89.660	275.150	6990.30	1034.70	-413.93	-1020.51	0.86	
9216.00	89.480	272.970	6990.97	1124.18	-407.56	-1110.27	2.43	
9305.00	89.380	269.470	6991.86	1213.02	-405.66	-1199.23	3.93	
9395.00	89.570	266.120	6992.68	1303.00	-409.13	-1289.15	3.73	
9484.00	89.570	265.150	6993.35	1391.92	-415.90	-1377.89	1.09	
9574.00	89.750	267.680	6993.88	1481.88	-421.53	-1467.70	2.82	
9663.00	89.750	267.110	6994.27	1570.88	-425.57	-1556.61	0.64	
9753.00	89.690	268.110	6994.71	1660.87	-429.33	-1646.53	1.11	
9842.00	88.650	269.580	6996.00	1749.85	-431.12	-1735.50	2.02	
9932.00	88.680	271.010	6998.10	1839.75	-430.66	-1825.47	1.59	
10021.00	88.800	271.220	7000.06	1928.59	-428.92	-1914.43	0.27	
10111.00	88.550	270.460	7002.14	2018.45	-427.61	-2004.40	0.89	
10200.00	88.650	270.380	7004.31	2107.34	-426.95	-2093.37	0.14	
10290.00	88.490	269.690	7006.56	2197.25	-426.90	-2183.34	0.79	
10379.00	88.460	269.850	7008.93	2286.17	-427.26	-2272.31	0.18	
10469.00	88.210	270.630	7011.54	2376.06	-426.88	-2362.27	0.91	
10558.00	90.980	272.450	7012.17	2464.87	-424.49	-2451.22	3.72	



Actual Wellpath Report

FALKEN 33N-9A-L AWP

Page 6 of 10



REFERENCE WELLPATH IDENTIFICATION

Operator	SRC ENERGY	Slot	SLOT#06 FALKEN 33N-9A-L (1829°FSL & 276°FEL, SEC.11)
Area	COLORADO	Well	FALKEN 33N-9A-L
Field	WELD COUNTY (NAD83,TRUE NORTH)	Wellbore	FALKEN 33N-9A-L AWB
Facility	SEC.11-T06N-R66W		

WELLPATH DATA (188 stations)

MD [ft]	Inclination [°]	Azimuth [°]	TVD [ft]	Vert Sect [ft]	North [ft]	East [ft]	DLS [°/100ft]	Comments
10647.00	91.320	272.290	7010.38	2553.59	-420.81	-2540.13	0.42	
10737.00	91.200	271.190	7008.41	2643.37	-418.08	-2630.06	1.23	
10826.00	91.450	279.170	7006.34	2731.57	-410.05	-2718.60	8.97	
10916.00	90.950	275.640	7004.46	2820.31	-398.45	-2807.82	3.96	
11005.00	90.890	271.350	7003.03	2908.86	-393.03	-2896.62	4.82	
11095.00	90.400	269.320	7002.02	2998.77	-392.50	-2986.61	2.32	
11185.00	89.450	267.750	7002.13	3088.76	-394.81	-3076.58	2.04	
11274.00	89.690	267.360	7002.80	3177.76	-398.60	-3165.49	0.51	
11363.00	89.420	268.410	7003.49	3266.75	-401.89	-3254.43	1.22	
11453.00	89.480	269.060	7004.36	3356.74	-403.87	-3344.40	0.73	
11542.00	90.800	268.320	7004.14	3445.73	-405.91	-3433.38	1.70	
11632.00	90.800	268.080	7002.88	3535.72	-408.73	-3523.32	0.27	
11721.00	90.430	268.760	7001.93	3624.71	-411.19	-3612.28	0.87	
11811.00	90.550	269.990	7001.16	3714.68	-412.17	-3702.27	1.37	
11900.00	90.490	270.580	7000.35	3803.60	-411.73	-3791.27	0.67	
11990.00	90.460	271.380	6999.60	3893.47	-410.19	-3881.25	0.89	
12079.00	90.490	271.690	6998.87	3982.29	-407.80	-3970.21	0.35	
12169.00	90.250	270.710	6998.28	4072.14	-405.92	-4060.19	1.12	
12259.00	90.580	271.520	6997.63	4162.00	-404.17	-4150.17	0.97	
12348.00	90.650	269.420	6996.68	4250.90	-403.44	-4239.16	2.36	
12438.00	90.580	269.810	6995.71	4340.86	-404.04	-4329.15	0.44	
12527.00	89.320	267.870	6995.79	4429.84	-405.84	-4418.13	2.60	
12617.00	88.740	267.830	6997.31	4519.83	-409.22	-4508.05	0.65	
12706.00	88.740	268.830	6999.27	4608.80	-411.81	-4596.99	1.12	
12796.00	88.920	269.090	7001.11	4698.77	-413.45	-4686.96	0.35	
12885.00	89.050	270.280	7002.68	4787.72	-413.94	-4775.94	1.34	
12975.00	89.020	269.620	7004.20	4877.65	-414.01	-4865.93	0.73	
13064.00	88.920	270.430	7005.80	4966.57	-413.98	-4954.91	0.92	
13153.00	88.740	269.840	7007.62	5055.49	-413.77	-5043.89	0.69	
13243.00	89.320	269.620	7009.14	5145.43	-414.19	-5133.88	0.69	



Actual Wellpath Report

FALKEN 33N-9A-L AWP

Page 7 of 10



REFERENCE WELLPATH IDENTIFICATION

Operator	SRC ENERGY	Slot	SLOT#06 FALKEN 33N-9A-L (1829°FSL & 276°FEL, SEC.11)
Area	COLORADO	Well	FALKEN 33N-9A-L
Field	WELD COUNTY (NAD83,TRUE NORTH)	Wellbore	FALKEN 33N-9A-L AWB
Facility	SEC.11-T06N-R66W		

WELLPATH DATA (188 stations)

MD [ft]	Inclination [°]	Azimuth [°]	TVD [ft]	Vert Sect [ft]	North [ft]	East [ft]	DLS [°/100ft]	Comments
13333.00	89.350	270.990	7010.19	5235.35	-413.71	-5223.87	1.52	
13422.00	89.450	271.440	7011.12	5324.20	-411.82	-5312.84	0.52	
13512.00	89.320	272.350	7012.08	5413.98	-408.85	-5402.79	1.02	
13601.00	88.830	272.230	7013.52	5502.71	-405.29	-5491.70	0.57	
13691.00	88.860	273.180	7015.33	5592.38	-401.05	-5581.58	1.06	
13780.00	88.800	273.030	7017.15	5681.00	-396.23	-5670.44	0.18	
13870.00	88.890	272.980	7018.97	5770.63	-391.51	-5760.29	0.11	
13959.00	88.770	273.010	7020.78	5859.27	-386.86	-5849.15	0.14	
14049.00	88.830	272.670	7022.67	5948.92	-382.40	-5939.02	0.38	
14138.00	89.020	272.160	7024.34	6037.63	-378.65	-6027.93	0.61	
14228.00	88.950	271.930	7025.93	6127.39	-375.44	-6117.86	0.27	
14317.00	88.860	271.400	7027.63	6216.18	-372.85	-6206.80	0.60	
14407.00	88.980	270.630	7029.33	6306.04	-371.26	-6296.77	0.87	
14496.00	88.860	269.950	7031.01	6394.95	-370.81	-6385.75	0.78	
14586.00	89.050	269.990	7032.65	6484.88	-370.86	-6475.74	0.22	
14675.00	88.920	269.440	7034.22	6573.82	-371.30	-6564.72	0.63	
14765.00	88.980	269.150	7035.87	6663.78	-372.41	-6654.70	0.33	
14854.00	89.630	269.370	7036.95	6752.75	-373.56	-6743.69	0.77	
14944.00	89.630	270.000	7037.53	6842.70	-374.05	-6833.68	0.70	
15033.00	89.570	271.070	7038.16	6931.61	-373.22	-6922.68	1.20	
15122.00	92.890	271.650	7034.31	7110.22	-368.97	-7101.56	1.88	
15302.00	93.420	271.930	7029.36	7199.89	-366.17	-7191.38	0.67	
15391.00	93.420	271.930	7024.05	7288.51	-363.18	-7280.17	0.00	
15481.00	92.960	272.040	7019.04	7378.15	-360.06	-7369.98	0.53	
15570.00	92.930	271.550	7014.47	7466.83	-357.28	-7458.81	0.55	
15659.00	93.020	271.530	7009.85	7555.54	-354.89	-7547.66	0.10	
15749.00	92.740	271.300	7005.33	7645.26	-352.67	-7637.52	0.40	
15838.00	92.740	271.300	7001.07	7734.00	-350.65	-7726.40	0.00	
15928.00	92.710	269.780	6996.80	7823.81	-349.81	-7816.29	1.69	
16017.00	90.710	269.600	6994.14	7912.72	-350.29	-7905.24	2.26	



Actual Wellpath Report

FALKEN 33N-9A-L AWP

Page 8 of 10



REFERENCE WELLPATH IDENTIFICATION

Operator	SRC ENERGY	Slot	SLOT#06 FALKEN 33N-9A-L (1829'FSL & 276'FEL, SEC.11)
Area	COLORADO	Well	FALKEN 33N-9A-L
Field	WELD COUNTY (NAD83,TRUE NORTH)	Wellbore	FALKEN 33N-9A-L AWB
Facility	SEC.11-T06N-R66W		

WELLPATH DATA (188 stations)

MD [ft]	Inclination [°]	Azimuth [°]	TVD [ft]	Vert Sect [ft]	North [ft]	East [ft]	DLS [°/100ft]	Comments
16107.00	89.510	270.040	6993.97	8002.67	-350.57	-7995.24	1.42	
16196.00	89.600	271.080	6994.66	8091.57	-349.70	-8084.23	1.17	
16286.00	89.230	271.880	6995.58	8181.40	-347.38	-8174.20	0.98	
16376.00	89.320	273.290	6996.72	8271.09	-343.32	-8264.09	1.57	
16465.00	90.800	274.450	6996.62	8359.61	-337.31	-8352.89	2.11	
16554.00	90.740	275.900	6995.43	8447.89	-329.28	-8441.51	1.63	
16644.00	89.880	284.270	6994.94	8535.80	-313.54	-8530.04	9.35	LAST BHGE MWD SURVEY (1495'FSL & 1873'FWL, SEC.10)
16680.00	89.880	284.270	6995.01	8570.35	-304.66	-8564.93	0.00	PROJECTION TO BIT (1504'FSL & 1838'FWL, SEC.10)

HOLE & CASING SECTIONS - Ref Wellbore: FALKEN 33N-9A-L AWB Ref Wellpath: FALKEN 33N-9A-L AWP

String/Diameter	Start MD [ft]	End MD [ft]	Interval [ft]	Start TVD [ft]	End TVD [ft]	Start N/S [ft]	Start E/W [ft]	End N/S [ft]	End E/W [ft]
13.5in Open Hole	25.00	1799.00	1774.00	25.00	1798.98	0.00	0.00	-0.64	1.78
9.625in Casing Surface	25.00	1799.00	1774.00	25.00	1798.98	0.00	0.00	-0.64	1.78
8.5in Open Hole	1799.00	16680.00	14881.00	1798.98	6995.01	-0.64	1.78	-304.66	-8564.93

TARGETS

Name	TVD [ft]	North [ft]	East [ft]	Grid East [US ft]	Grid North [US ft]	Latitude	Longitude	Shape
SEC.10-T6N-R66W	0.00	75.01	0.54	3212478.20	1426196.25	40°30'02.869"N	104°44'09.402"W	polygon
SEC.11-T6N-R66W SOUTHERN HALF	0.00	75.01	0.54	3212478.20	1426196.25	40°30'02.869"N	104°44'09.402"W	polygon
SEC.14-T6N-R66W NORTHERN HALF	0.00	75.01	0.54	3212478.20	1426196.25	40°30'02.869"N	104°44'09.402"W	polygon
SEC.9-T6N-R66W EAST QUARTER	0.00	75.01	0.54	3212478.20	1426196.25	40°30'02.869"N	104°44'09.402"W	polygon
FALKEN 33N-9A-L TOP OF PROD (1406'FSL & 300'FWL, SEC.12)	6940.00	-422.64	572.89	3213054.80	1425703.56	40°29'57.952"N	104°44'01.993"W	circle
FALKEN 33N-9A-L BHL ON PLAT (1424'FSL & 300'FEL, SEC.09)	6970.00	-384.26	-10702.85	3201779.55	1425644.79	40°29'58.308"N	104°46'27.952"W	circle
FALKEN 33N-9A-L REV-2 TOP OF PROD(1406'FSL & 300'FWL, SEC.12)	6986.27	-422.60	572.91	3213054.82	1425703.60	40°29'57.952"N	104°44'01.993"W	circle
FALKEN 33N-9A-L REV-2 BHL ON PLAT (1424'FSL & 300'FEL, SEC.09)	6989.96	-384.26	-10702.88	3201779.51	1425644.79	40°29'58.308"N	104°46'27.952"W	circle
FALKEN 33N-9A-L Target 3	6996.90	-406.13	-4319.23	3208162.90	1425677.92	40°29'58.111"N	104°45'05.319"W	point
FALKEN 33N-9A-L Target 2	7011.90	-412.47	-2451.40	3210030.65	1425687.68	40°29'58.051"N	104°44'41.141"W	point
FALKEN 33N-9A-L Target 4	7011.90	-402.26	-5467.41	3207014.77	1425671.90	40°29'58.147"N	104°45'20.182"W	point
FALKEN 33N-9A-L Target 5	7035.40	-384.26	-6667.43	3205814.68	1425679.56	40°29'58.322"N	104°45'35.715"W	point

TARGETS

Name	TVD [ft]	North [ft]	East [ft]	Grid East [US ft]	Grid North [US ft]	Latitude	Longitude	Shape
FALKEN 33N-9A-L Target 6	7055.70	-318.04	-8888.63	3203593.07	1425726.64	40°29'58.969"N	104°46'04.468"W	point



SRC ENERGY

Actual Wellpath Report

FALKEN 33N-9A-L AWP

Page 9 of 10

**BAKER
HUGHES****REFERENCE WELLPATH IDENTIFICATION**

Operator	SRC ENERGY	Slot	SLOT#06 FALKEN 33N-9A-L (1829'FSL & 276'FEL, SEC.11)
Area	COLORADO	Well	FALKEN 33N-9A-L
Field	WELD COUNTY (NAD83,TRUE NORTH)	Wellbore	FALKEN 33N-9A-L AWB
Facility	SEC.11-T06N-R66W		

WELLPATH COMPOSITION - Ref Wellbore: FALKEN 33N-9A-L AWB Ref Wellpath: FALKEN 33N-9A-L AWP

Start MD [ft]	End MD [ft]	Positional Uncertainty Model	Log Name/Comment	Wellbore
25.00	1753.00	Custom BHI NaviTrak (Standard Rotating+Axial Corr) (Rockies 0.03Gt model)	13 1/2" APS EM SURVEYS <153'-1753'>	FALKEN 33N-9A-L AWB
1753.00	16644.00	BHI AutoTrak Curve (IFR1, Short)	8 1/2" BHI ATC (SHORT ; IFR1) <1878'-16644'>	FALKEN 33N-9A-L AWB
16644.00	16680.00	Blind Drilling (std)	Projection to bit	FALKEN 33N-9A-L AWB



SRC ENERGY

Actual Wellpath Report

FALKEN 33N-9A-L AWP

Page 10 of 10



**BAKER
HUGHES**

REFERENCE WELLPATH IDENTIFICATION

Operator	SRC ENERGY	Slot	SLOT#06 FALKEN 33N-9A-L (1829'FSL & 276'FEL, SEC.11)
Area	COLORADO	Well	FALKEN 33N-9A-L
Field	WELD COUNTY (NAD83,TRUE NORTH)	Wellbore	FALKEN 33N-9A-L AWB
Facility	SEC.11-T06N-R66W		

WELLPATH COMMENTS

MD [ft]	Inclination [°]	Azimuth [°]	TVD [ft]	Comment
7516.00	85.810	268.300	6980.00	LANDING POINT (1397'FSL & 316'FWL, SEC.12)
16644.00	89.880	284.270	6994.94	LAST BHGE MWD SURVEY (1495'FSL & 1873'FWL, SEC,10)
16680.00	89.880	284.270	6995.01	PROJECTION TO BIT (1504'FSL & 1838'FWL, SEC.10)