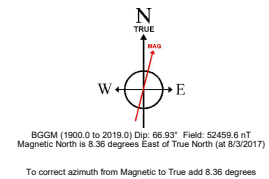
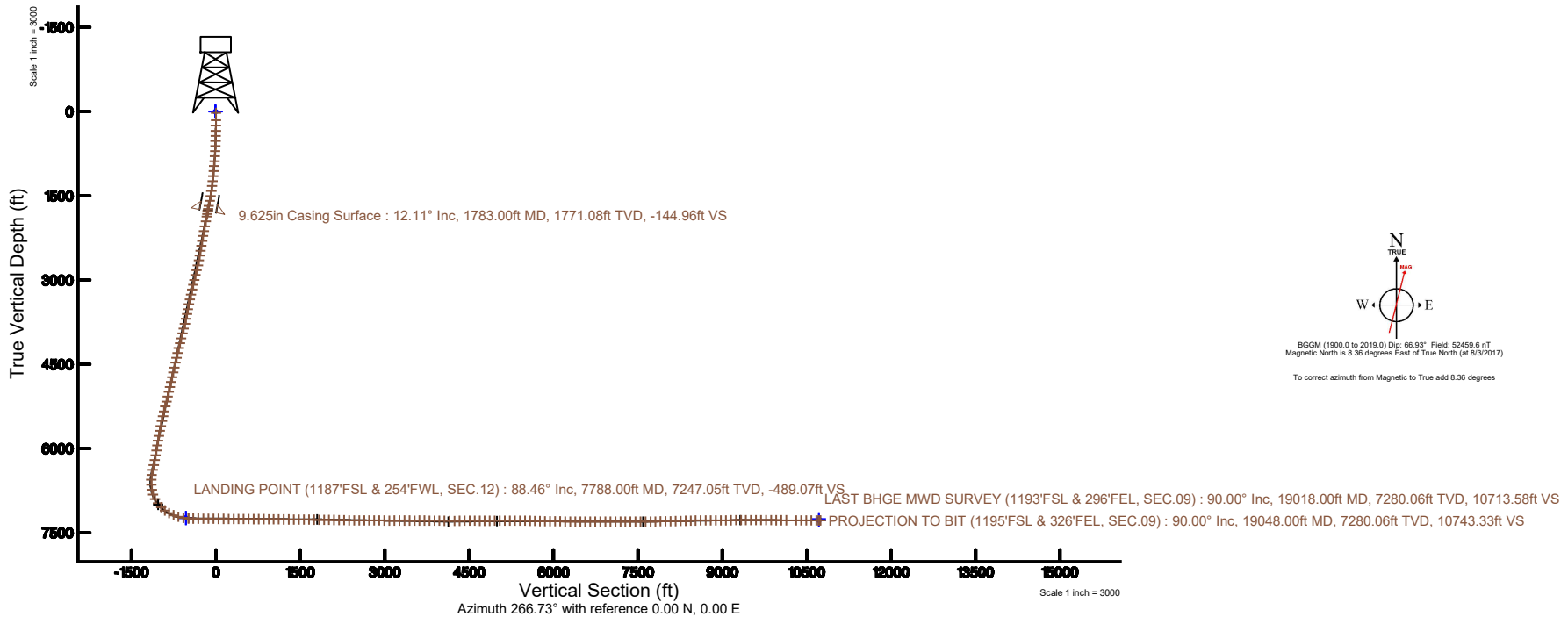
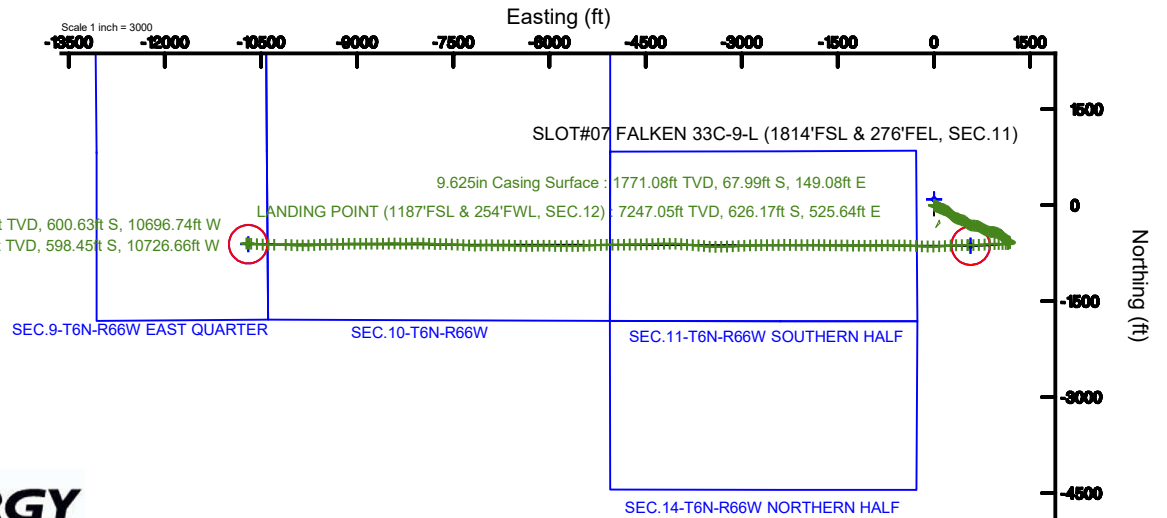


SRC ENERGY

Location: COLORADO Slot: SLOT#07 FALKEN 33C-9-L (1814'FSL & 276'FEL, SEC.11)
 Field: WELD COUNTY (NAD83,TRUE NORTH) Well: FALKEN 33C-9-L
 Facility: SEC.11-T06N-R66W Wellbore: FALKEN 33C-9-L PWB

Plot reference wellpath is FALKEN 33C-9-L PWB (REV-C.0)	Grid System: NAD83 / Lambert Colorado SP, Northern Zone (501), US feet
True vertical depths are referenced to PRECISION DRILLING (25') (RKB)	* = Wellpath was transformed from a different geodetic datum
Measured depths are referenced to PRECISION DRILLING (25') (RKB)	North Reference: True north
PRECISION DRILLING (25') (RKB) to Mean Sea Level: 4835 feet	Scale: True distance
Mean Sea Level to Mud line (At Slot: SLOT#07 FALKEN 33C-9-L (1814'FSL & 276'FEL, SEC.11)): 0 feet	Depths are in feet
Coordinates are in feet referenced to Slot	Created by: doddanna on 2018-02-07
	Database: WellArchitectDB





Actual Wellpath Report

FALKEN 33C-9-L AWP

Page 1 of 11



REFERENCE WELLPATH IDENTIFICATION

Operator	SRC ENERGY	Slot	SLOT#07 FALKEN 33C-9-L (1814'FSL & 276'FEL, SEC.11)
Area	COLORADO	Well	FALKEN 33C-9-L
Field	WELD COUNTY (NAD83,TRUE NORTH)	Wellbore	FALKEN 33C-9-L AWB
Facility	SEC.11-T06N-R66W		

REPORT SETUP INFORMATION

Projection System	NAD83 / Lambert Colorado SP, Northern Zone (501), US feet	Software System	WellArchitect® 5.0
North Reference	True	User	Doddanna
Scale	0.999966	Report Generated	2/7/2018 at 1:26:11 PM
Convergence at slot	0.49° East	Database/Source file	WellArchitectDB/FALKEN_33C-9-L_AWP.xml

WELLPATH LOCATION

	Local coordinates		Grid coordinates		Geographic coordinates	
	North[ft]	East[ft]	Easting[US ft]	Northing[US ft]	Latitude	Longitude
Slot Location	-89.99	-0.83	3212478.15	1426106.26	40°30'01.980"N	104°44'09.413"W
Facility Reference Pt			3212478.20	1426196.25	40°30'02.869"N	104°44'09.402"W
Field Reference Pt			3171284.48	1426358.81	40°30'07.643"N	104°53'02.634"W

WELLPATH DATUM

Calculation method	Minimum curvature	PRECISION DRILLING (25') (RKB) to Facility Vertical Datum	4835.00ft
Horizontal Reference Pt	Slot	PRECISION DRILLING (25') (RKB) to Mean Sea Level	4835.00ft
Vertical Reference Pt	PRECISION DRILLING (25') (RKB)	PRECISION DRILLING (25') (RKB) to Mud Line at Slot (SLOT#07 FALKEN 33C-9-L (1814'FSL & 276'FEL, SEC.11))	4835.00ft
MD Reference Pt	PRECISION DRILLING (25') (RKB)	Section Origin	N 0.00, E 0.00 ft
Field Vertical Reference	Mean Sea Level	Section Azimuth	266.73°



SRC ENERGY

Actual Wellpath Report

FALKEN 33C-9-L AWP

Page 2 of 11

**BAKER
HUGHES**

REFERENCE WELLPATH IDENTIFICATION

Operator	SRC ENERGY	Slot	SLOT#07 FALKEN 33C-9-L (1814'FSL & 276'FEL, SEC.11)
Area	COLORADO	Well	FALKEN 33C-9-L
Field	WELD COUNTY (NAD83,TRUE NORTH)	Wellbore	FALKEN 33C-9-L AWB
Facility	SEC.11-T06N-R66W		

WELLPATH DATA (215 stations) † = interpolated/extrapolated station

MD [ft]	Inclination [°]	Azimuth [°]	TVD [ft]	Vert Sect [ft]	North [ft]	East [ft]	DLS [°/100ft]	Comments
0.00†	0.000	197.870	0.00	0.00	0.00	0.00	0.00	
25.00	0.000	197.870	25.00	0.00	0.00	0.00	0.00	
153.00	0.100	197.870	153.00	0.04	-0.11	-0.03	0.08	
247.00	0.710	134.990	247.00	-0.32	-0.60	0.35	0.71	
342.00	0.960	125.240	341.99	-1.33	-1.47	1.42	0.30	
436.00	1.960	116.670	435.96	-3.34	-2.65	3.50	1.09	
526.00	2.250	121.040	525.89	-6.13	-4.25	6.39	0.37	
614.00	2.140	123.940	613.83	-8.87	-6.06	9.23	0.18	
704.00	3.320	118.630	703.73	-12.42	-8.24	12.91	1.34	
793.00	4.680	115.710	792.51	-17.79	-11.05	18.45	1.54	
883.00	4.720	115.700	882.21	-24.24	-14.25	25.09	0.04	
972.00	5.590	114.410	970.84	-31.28	-17.63	32.34	0.99	
1061.00	6.120	112.200	1059.38	-39.40	-21.22	40.68	0.65	
1151.00	6.070	112.940	1148.87	-48.00	-24.88	49.50	0.10	
1240.00	7.410	117.240	1237.25	-57.17	-29.34	58.94	1.61	
1330.00	8.900	118.820	1326.34	-68.07	-35.36	70.20	1.67	
1419.00	9.250	112.940	1414.23	-80.32	-41.46	82.82	1.11	
1509.00	10.150	110.930	1502.94	-94.04	-47.12	96.89	1.07	
1598.00	11.480	110.360	1590.36	-109.31	-53.00	112.51	1.50	
1688.00	12.660	112.740	1678.37	-126.38	-59.93	130.01	1.42	
1743.00	12.750	112.940	1732.02	-137.24	-64.62	141.16	0.18	
1837.00	11.240	113.250	1823.97	-154.75	-72.28	159.13	1.61	
1882.00	11.930	116.140	1868.05	-162.72	-76.06	167.33	2.00	
1972.00	13.320	117.280	1955.87	-179.75	-84.91	184.90	1.57	
2061.00	12.390	113.580	2042.64	-197.10	-93.43	202.76	1.40	
2151.00	12.250	121.830	2130.58	-213.53	-102.33	219.72	1.96	
2239.00	13.380	132.980	2216.40	-228.21	-114.20	235.11	3.08	
2329.00	14.230	133.810	2303.80	-242.95	-128.96	250.71	0.97	
2419.00	13.780	135.090	2391.12	-257.60	-144.21	266.26	0.61	
2508.00	14.190	136.600	2477.48	-271.68	-159.64	281.24	0.62	



SRC ENERGY

Actual Wellpath Report

FALKEN 33C-9-L AWP

Page 3 of 11

**BAKER
HUGHES**

REFERENCE WELLPATH IDENTIFICATION

Operator	SRC ENERGY	Slot	SLOT#07 FALKEN 33C-9-L (1814'FSL & 276'FEL, SEC.11)
Area	COLORADO	Well	FALKEN 33C-9-L
Field	WELD COUNTY (NAD83,TRUE NORTH)	Wellbore	FALKEN 33C-9-L AWB
Facility	SEC.11-T06N-R66W		

WELLPATH DATA (215 stations)

MD [ft]	Inclination [°]	Azimuth [°]	TVD [ft]	Vert Sect [ft]	North [ft]	East [ft]	DLS [°/100ft]	Comments
2597.00	14.250	135.180	2563.76	-285.97	-175.33	296.45	0.40	
2687.00	14.360	124.030	2650.98	-302.20	-189.44	313.51	3.06	
2776.00	14.220	113.300	2737.24	-320.76	-199.94	332.70	2.98	
2866.00	14.260	105.070	2824.49	-341.17	-207.20	353.56	2.25	
2955.00	14.160	102.680	2910.77	-362.04	-212.44	374.77	0.67	
3045.00	13.590	111.940	2998.15	-382.20	-218.80	395.32	2.54	
3134.00	14.710	116.860	3084.45	-401.43	-227.82	415.10	1.85	
3223.00	14.850	107.420	3170.52	-421.88	-236.34	436.06	2.71	
3313.00	14.200	103.520	3257.64	-443.24	-242.37	457.80	1.30	
3403.00	14.230	119.980	3344.92	-463.06	-250.48	478.13	4.48	
3492.00	14.180	129.480	3431.22	-480.22	-262.88	496.02	2.62	
3582.00	14.670	131.120	3518.38	-496.46	-277.39	513.11	0.71	
3671.00	14.360	129.390	3604.54	-512.63	-291.80	530.13	0.60	
3761.00	14.820	123.190	3691.64	-530.09	-305.19	548.39	1.81	
3850.00	15.040	110.280	3777.66	-549.84	-315.42	568.75	3.74	
3939.00	14.590	92.350	3863.75	-571.59	-319.89	590.80	5.16	
4029.00	14.140	93.110	3950.93	-593.80	-320.95	613.10	0.54	
4119.00	14.220	93.670	4038.19	-615.70	-322.25	635.11	0.18	
4208.00	14.260	91.880	4124.46	-637.47	-323.31	656.97	0.50	
4298.00	14.630	103.940	4211.63	-659.37	-326.41	679.09	3.36	
4387.00	14.750	115.410	4297.74	-680.05	-333.98	700.23	3.27	
4477.00	14.580	119.850	4384.81	-699.59	-344.54	720.41	1.26	
4566.00	14.650	123.910	4470.93	-717.94	-356.39	739.46	1.15	
4656.00	14.780	119.390	4557.98	-736.67	-368.38	758.91	1.28	
4745.00	14.820	116.450	4644.03	-756.11	-379.02	779.00	0.84	
4835.00	14.720	114.120	4731.06	-776.26	-388.82	799.74	0.67	
4924.00	14.840	116.080	4817.12	-796.24	-398.45	820.29	0.58	
5014.00	14.810	114.200	4904.12	-816.49	-408.23	841.14	0.54	
5103.00	13.790	105.200	4990.37	-836.65	-415.68	861.75	2.74	
5192.00	13.790	91.610	5076.83	-857.28	-418.76	882.60	3.63	



SRC ENERGY

Actual Wellpath Report

FALKEN 33C-9-L AWP

Page 4 of 11



REFERENCE WELLPATH IDENTIFICATION

Operator	SRC ENERGY	Slot	SLOT#07 FALKEN 33C-9-L (1814'FSL & 276'FEL, SEC.11)
Area	COLORADO	Well	FALKEN 33C-9-L
Field	WELD COUNTY (NAD83,TRUE NORTH)	Wellbore	FALKEN 33C-9-L AWB
Facility	SEC.11-T06N-R66W		

WELLPATH DATA (215 stations)

MD [ft]	Inclination [°]	Azimuth [°]	TVD [ft]	Vert Sect [ft]	North [ft]	East [ft]	DLS [°/100ft]	Comments
5282.00	13.660	87.790	5164.26	-878.60	-418.65	903.94	1.02	
5372.00	13.540	99.310	5251.75	-899.51	-419.94	924.96	3.01	
5461.00	13.770	103.690	5338.24	-919.81	-424.14	945.53	1.19	
5550.00	13.640	107.000	5424.71	-939.78	-429.71	965.86	0.89	
5640.00	13.720	107.320	5512.16	-959.73	-435.99	986.20	0.12	
5729.00	13.680	111.720	5598.63	-979.15	-443.03	1006.05	1.17	
5819.00	13.650	122.890	5686.09	-997.37	-452.73	1024.86	2.93	
5909.00	13.750	128.150	5773.54	-1013.97	-465.11	1042.19	1.39	
5998.00	13.740	134.030	5859.99	-1029.07	-478.99	1058.10	1.57	
6088.00	13.700	134.710	5947.42	-1043.45	-493.92	1073.36	0.18	
6177.00	13.810	133.760	6033.87	-1057.75	-508.68	1088.52	0.28	
6267.00	13.780	131.300	6121.28	-1072.70	-523.18	1104.34	0.65	
6356.00	13.810	129.500	6207.71	-1088.05	-536.93	1120.50	0.48	
6446.00	13.800	121.820	6295.12	-1104.72	-549.43	1137.91	2.03	
6535.00	13.740	117.490	6381.56	-1122.49	-559.90	1156.30	1.16	
6625.00	13.430	123.570	6469.05	-1140.04	-570.62	1174.49	1.62	
6714.00	6.710	174.270	6556.77	-1148.56	-581.54	1183.65	11.82	
6804.00	6.760	189.880	6646.16	-1147.58	-591.99	1183.27	2.03	
6893.00	11.040	242.940	6734.20	-1138.58	-601.04	1174.76	9.89	
6983.00	19.260	261.040	6821.04	-1115.87	-607.29	1152.37	10.43	
7072.00	27.780	267.020	6902.59	-1080.45	-610.66	1117.09	9.93	
7161.00	37.270	272.910	6977.56	-1032.80	-610.37	1069.35	11.23	
7251.00	45.670	272.550	7044.94	-973.58	-607.55	1009.87	9.34	
7341.00	52.440	269.200	7103.89	-905.83	-606.61	941.95	8.03	
7430.00	61.250	265.900	7152.53	-831.41	-609.90	867.60	10.37	
7519.00	69.930	264.800	7189.27	-750.47	-616.49	786.91	9.82	
7609.00	74.060	267.150	7217.09	-664.91	-622.48	701.55	5.22	
7698.00	79.380	268.370	7237.53	-578.34	-625.85	615.03	6.12	
7788.00	88.460	271.200	7247.05	-489.07	-626.17	525.64	10.56	LANDING POINT (1187'FSL & 254'FWL, SEC.12)
7877.00	89.420	270.430	7248.70	-400.32	-624.90	436.66	1.38	



SRC ENERGY

Actual Wellpath Report

FALKEN 33C-9-L AWP

Page 5 of 11



**BAKER
HUGHES**

REFERENCE WELLPATH IDENTIFICATION

Operator	SRC ENERGY	Slot	SLOT#07 FALKEN 33C-9-L (1814'FSL & 276'FEL, SEC.11)
Area	COLORADO	Well	FALKEN 33C-9-L
Field	WELD COUNTY (NAD83,TRUE NORTH)	Wellbore	FALKEN 33C-9-L AWB
Facility	SEC.11-T06N-R66W		

WELLPATH DATA (215 stations)

MD [ft]	Inclination [°]	Azimuth [°]	TVD [ft]	Vert Sect [ft]	North [ft]	East [ft]	DLS [°/100ft]	Comments
7967.00	89.480	267.360	7249.56	-310.40	-626.64	346.69	3.41	
8056.00	89.450	265.990	7250.39	-221.40	-631.80	257.85	1.54	
8146.00	89.380	265.780	7251.31	-131.42	-638.26	168.09	0.25	
8235.00	89.320	266.750	7252.32	-42.43	-644.05	79.28	1.09	
8324.00	89.350	268.590	7253.36	46.55	-647.67	-9.63	2.07	
8414.00	89.540	271.590	7254.23	136.38	-647.53	-99.62	3.34	
8503.00	89.600	272.770	7254.90	224.98	-644.15	-188.55	1.33	
8593.00	89.720	272.820	7255.43	314.47	-639.76	-278.44	0.14	
8682.00	89.540	273.190	7256.00	402.94	-635.09	-367.32	0.46	
8772.00	89.480	271.280	7256.77	492.51	-631.58	-457.24	2.12	
8861.00	89.420	270.190	7257.63	581.29	-630.44	-546.23	1.23	
8950.00	89.660	270.450	7258.34	670.11	-629.94	-635.23	0.40	
9040.00	89.600	269.830	7258.92	759.95	-629.72	-725.22	0.69	
9130.00	89.630	269.420	7259.53	849.83	-630.31	-815.22	0.46	
9219.00	88.370	268.740	7261.08	938.74	-631.74	-904.19	1.61	
9308.00	89.630	269.100	7262.64	1027.66	-633.42	-993.16	1.47	
9398.00	89.660	269.270	7263.19	1117.58	-634.70	-1083.15	0.19	
9488.00	89.630	270.380	7263.75	1207.45	-634.97	-1173.15	1.23	
9577.00	89.350	271.010	7264.54	1296.23	-633.89	-1262.13	0.77	
9667.00	89.320	271.020	7265.59	1385.97	-632.30	-1352.11	0.04	
9756.00	89.290	271.030	7266.67	1474.71	-630.71	-1441.09	0.04	
9846.00	89.690	270.860	7267.47	1564.47	-629.22	-1531.08	0.48	
9935.00	89.380	270.360	7268.19	1653.26	-628.28	-1620.07	0.66	
10025.00	89.290	270.710	7269.24	1743.06	-627.44	-1710.06	0.40	
10114.00	89.320	270.940	7270.31	1831.82	-626.15	-1799.04	0.26	
10204.00	89.350	270.680	7271.36	1921.59	-624.88	-1889.03	0.29	
10293.00	88.980	270.460	7272.66	2010.38	-624.00	-1978.01	0.48	
10383.00	88.920	270.320	7274.31	2100.18	-623.38	-2068.00	0.17	
10472.00	88.920	270.240	7275.98	2188.99	-622.95	-2156.98	0.09	
10561.00	88.770	270.280	7277.78	2277.81	-622.55	-2245.96	0.17	



SRC ENERGY

Actual Wellpath Report

FALKEN 33C-9-L AWP

Page 6 of 11



**BAKER
HUGHES**

REFERENCE WELLPATH IDENTIFICATION

Operator	SRC ENERGY	Slot	SLOT#07 FALKEN 33C-9-L (1814'FSL & 276'FEL, SEC.11)
Area	COLORADO	Well	FALKEN 33C-9-L
Field	WELD COUNTY (NAD83,TRUE NORTH)	Wellbore	FALKEN 33C-9-L AWB
Facility	SEC.11-T06N-R66W		

WELLPATH DATA (215 stations)

MD [ft]	Inclination [°]	Azimuth [°]	TVD [ft]	Vert Sect [ft]	North [ft]	East [ft]	DLS [°/100ft]	Comments
10651.00	88.680	269.910	7279.78	2367.63	-622.40	-2335.94	0.42	
10740.00	88.980	269.520	7281.60	2456.49	-622.84	-2424.92	0.55	
10830.00	90.280	269.940	7282.18	2546.36	-623.26	-2514.91	1.52	
10920.00	90.150	269.420	7281.84	2636.24	-623.77	-2604.91	0.60	
11009.00	90.370	268.710	7281.44	2725.17	-625.22	-2693.90	0.84	
11098.00	90.180	268.430	7281.01	2814.12	-627.44	-2782.87	0.38	
11188.00	88.740	266.700	7281.86	2904.10	-631.26	-2872.78	2.50	
11277.00	88.680	266.800	7283.86	2993.08	-636.31	-2961.61	0.13	
11367.00	90.340	268.080	7284.63	3083.06	-640.33	-3051.51	2.33	
11456.00	90.180	268.370	7284.23	3172.03	-643.08	-3140.47	0.37	
11546.00	89.940	266.740	7284.13	3262.02	-646.92	-3230.39	1.83	
11635.00	90.460	268.050	7283.82	3351.01	-650.97	-3319.29	1.58	
11725.00	88.890	271.130	7284.33	3440.88	-651.61	-3409.27	3.84	
11814.00	90.220	273.360	7285.02	3529.46	-648.12	-3498.19	2.92	
11904.00	90.400	275.940	7284.54	3618.59	-640.83	-3587.89	2.87	
11993.00	90.060	275.060	7284.18	3706.55	-632.30	-3676.48	1.06	
12083.00	88.860	274.070	7285.03	3795.71	-625.14	-3766.19	1.73	
12173.00	89.380	274.590	7286.41	3884.90	-618.34	-3855.92	0.82	
12262.00	89.080	273.870	7287.61	3973.13	-611.78	-3944.67	0.88	
12352.00	89.350	273.250	7288.84	4062.49	-606.19	-4034.48	0.75	
12441.00	89.050	270.290	7290.08	4151.12	-603.44	-4123.42	3.34	
12531.00	90.550	268.360	7290.40	4241.02	-604.50	-4213.41	2.72	
12620.00	91.200	269.240	7289.04	4329.95	-606.37	-4302.38	1.23	
12710.00	90.710	268.100	7287.54	4419.89	-608.45	-4392.34	1.38	
12799.00	89.660	267.690	7287.25	4508.87	-611.72	-4481.28	1.27	
12889.00	89.350	268.080	7288.03	4598.85	-615.04	-4571.21	0.55	
12978.00	89.380	270.220	7289.01	4687.76	-616.36	-4660.19	2.40	
13067.00	89.940	269.300	7289.54	4776.63	-616.74	-4749.19	1.21	
13157.00	90.710	269.080	7289.03	4866.54	-618.01	-4839.18	0.89	
13246.00	90.680	269.960	7287.95	4955.43	-618.76	-4928.17	0.99	



SRC ENERGY

Actual Wellpath Report

FALKEN 33C-9-L AWP

Page 7 of 11



**BAKER
HUGHES**

REFERENCE WELLPATH IDENTIFICATION

Operator	SRC ENERGY	Slot	SLOT#07 FALKEN 33C-9-L (1814'FSL & 276'FEL, SEC.11)
Area	COLORADO	Well	FALKEN 33C-9-L
Field	WELD COUNTY (NAD83,TRUE NORTH)	Wellbore	FALKEN 33C-9-L AWB
Facility	SEC.11-T06N-R66W		

WELLPATH DATA (215 stations)

MD [ft]	Inclination [°]	Azimuth [°]	TVD [ft]	Vert Sect [ft]	North [ft]	East [ft]	DLS [°/100ft]	Comments
13336.00	90.860	270.150	7286.74	5045.27	-618.67	-5018.16	0.29	
13426.00	90.090	268.640	7286.00	5135.17	-619.62	-5108.15	1.88	
13515.00	89.910	267.860	7286.00	5224.14	-622.34	-5197.10	0.90	
13605.00	89.850	267.660	7286.18	5314.12	-625.86	-5287.04	0.23	
13694.00	89.750	266.510	7286.50	5403.12	-630.38	-5375.92	1.30	
13783.00	89.110	267.620	7287.38	5492.11	-634.94	-5464.80	1.44	
13873.00	88.280	269.030	7289.43	5582.05	-637.57	-5554.73	1.82	
13962.00	88.620	269.210	7291.84	5670.94	-638.93	-5643.69	0.43	
14052.00	88.710	269.830	7293.93	5760.81	-639.69	-5733.66	0.70	
14141.00	89.750	270.560	7295.13	5849.63	-639.39	-5822.65	1.43	
14231.00	89.720	271.280	7295.55	5939.39	-637.94	-5912.64	0.80	
14320.00	89.480	271.910	7296.17	6028.07	-635.46	-6001.60	0.76	
14410.00	88.550	270.280	7297.72	6117.79	-633.74	-6091.56	2.08	
14499.00	88.550	268.660	7299.97	6206.66	-634.57	-6180.53	1.82	
14589.00	88.680	268.570	7302.14	6296.58	-636.74	-6270.48	0.18	
14678.00	89.750	270.080	7303.36	6385.48	-637.79	-6359.46	2.08	
14768.00	89.850	270.860	7303.68	6475.29	-637.05	-6449.45	0.87	
14857.00	89.940	272.580	7303.84	6563.95	-634.38	-6538.41	1.94	
14947.00	90.770	272.220	7303.28	6653.50	-630.61	-6628.33	1.01	
15037.00	90.800	270.050	7302.05	6743.22	-628.83	-6718.30	2.41	
15126.00	89.820	270.370	7301.57	6832.06	-628.50	-6807.29	1.16	
15216.00	89.750	271.180	7301.91	6921.83	-627.28	-6897.28	0.90	
15305.00	89.850	269.560	7302.22	7010.65	-626.71	-6986.28	1.82	
15394.00	90.030	266.050	7302.31	7099.62	-630.12	-7075.20	3.95	
15484.00	89.970	271.450	7302.31	7189.53	-632.08	-7165.15	6.00	
15573.00	89.780	272.940	7302.50	7278.12	-628.67	-7254.08	1.69	
15663.00	89.880	273.010	7302.77	7367.59	-624.00	-7343.96	0.14	
15752.00	90.030	272.810	7302.84	7456.07	-619.48	-7432.84	0.28	
15842.00	89.660	272.260	7303.08	7545.61	-615.50	-7522.75	0.74	
15931.00	90.980	273.220	7302.59	7634.12	-611.25	-7611.65	1.83	



SRC ENERGY

Actual Wellpath Report

FALKEN 33C-9-L AWP

Page 8 of 11



**BAKER
HUGHES**

REFERENCE WELLPATH IDENTIFICATION

Operator	SRC ENERGY	Slot	SLOT#07 FALKEN 33C-9-L (1814'FSL & 276'FEL, SEC.11)
Area	COLORADO	Well	FALKEN 33C-9-L
Field	WELD COUNTY (NAD83,TRUE NORTH)	Wellbore	FALKEN 33C-9-L AWB
Facility	SEC.11-T06N-R66W		

WELLPATH DATA (215 stations)

MD [ft]	Inclination [°]	Azimuth [°]	TVD [ft]	Vert Sect [ft]	North [ft]	East [ft]	DLS [°/100ft]	Comments
16021.00	90.920	270.350	7301.09	7723.74	-608.45	-7701.58	3.19	
16110.00	90.950	270.990	7299.64	7812.52	-607.40	-7790.56	0.72	
16200.00	91.140	271.990	7298.00	7902.20	-605.06	-7880.52	1.13	
16289.00	91.140	272.470	7296.23	7990.77	-601.60	-7969.43	0.54	
16379.00	90.830	269.580	7294.68	8080.49	-599.99	-8059.39	3.23	
16468.00	91.050	268.160	7293.22	8169.42	-601.75	-8148.36	1.61	
16558.00	91.140	270.250	7291.50	8259.31	-603.00	-8238.33	2.32	
16647.00	91.940	270.850	7289.11	8348.08	-602.14	-8327.29	1.12	
16737.00	91.720	270.470	7286.24	8437.82	-601.11	-8417.24	0.49	
16826.00	91.910	269.160	7283.42	8526.65	-601.39	-8506.19	1.49	
16916.00	90.710	269.120	7281.36	8616.54	-602.74	-8596.16	1.33	
17005.00	90.680	268.950	7280.28	8705.46	-604.24	-8685.14	0.19	
17095.00	89.880	269.310	7279.84	8795.38	-605.61	-8775.13	0.97	
17184.00	90.060	270.000	7279.89	8884.27	-606.15	-8864.13	0.80	
17274.00	89.910	270.180	7279.91	8974.11	-606.00	-8954.13	0.26	
17363.00	90.030	270.410	7279.96	9062.94	-605.55	-9043.12	0.29	
17452.00	90.710	269.280	7279.38	9151.80	-605.79	-9132.12	1.48	
17542.00	90.860	268.670	7278.15	9241.73	-607.40	-9222.10	0.70	
17632.00	90.740	268.690	7276.89	9331.67	-609.47	-9312.06	0.14	
17721.00	90.710	268.470	7275.77	9420.61	-611.67	-9401.03	0.25	
17810.00	89.690	266.920	7275.46	9509.60	-615.25	-9489.95	2.08	
17900.00	89.630	266.300	7275.99	9599.59	-620.58	-9579.79	0.69	
17989.00	89.630	267.680	7276.56	9688.59	-625.25	-9668.67	1.55	
18079.00	89.630	268.960	7277.15	9778.55	-627.89	-9758.62	1.42	
18169.00	89.660	269.850	7277.70	9868.45	-628.82	-9848.62	0.99	
18258.00	89.630	271.220	7278.25	9957.25	-627.99	-9937.61	1.54	
18348.00	89.450	273.580	7278.98	10046.80	-624.22	-10027.52	2.63	
18437.00	89.750	272.060	7279.60	10135.29	-619.84	-10116.41	1.74	
18616.00	89.820	268.830	7280.27	10313.89	-618.45	-10295.38	1.80	
18706.00	90.280	269.990	7280.19	10403.79	-619.38	-10385.37	1.39	



SRC ENERGY

Actual Wellpath Report

FALKEN 33C-9-L AWP

Page 9 of 11



REFERENCE WELLPATH IDENTIFICATION

Operator	SRC ENERGY	Slot	SLOT#07 FALKEN 33C-9-L (1814'FSL & 276'FEL, SEC.11)
Area	COLORADO	Well	FALKEN 33C-9-L
Field	WELD COUNTY (NAD83,TRUE NORTH)	Wellbore	FALKEN 33C-9-L AWB
Facility	SEC.11-T06N-R66W		

WELLPATH DATA (215 stations)

MD [ft]	Inclination [°]	Azimuth [°]	TVD [ft]	Vert Sect [ft]	North [ft]	East [ft]	DLS [°/100ft]	Comments
18795.00	90.180	273.730	7279.83	10492.42	-616.49	-10474.31	4.20	
18884.00	89.880	273.660	7279.79	10580.76	-610.76	-10563.12	0.35	
18974.00	89.850	274.840	7280.00	10669.99	-604.09	-10652.87	1.31	
19018.00	90.000	274.170	7280.06	10713.58	-600.63	-10696.74	1.56	LAST BHGE MWD SURVEY (1193'FSL & 296'FEL, SEC.09)
19048.00	90.000	274.170	7280.06	10743.33	-598.45	-10726.66	0.00	PROJECTION TO BIT (1195'FSL & 326'FEL, SEC.09)

HOLE & CASING SECTIONS - Ref Wellbore: FALKEN 33C-9-L AWB Ref Wellpath: FALKEN 33C-9-L AWP

String/Diameter	Start MD [ft]	End MD [ft]	Interval [ft]	Start TVD [ft]	End TVD [ft]	Start N/S [ft]	Start E/W [ft]	End N/S [ft]	End E/W [ft]
13.5in Open Hole	25.00	1783.00	1758.00	25.00	1771.08	0.00	0.00	-67.99	149.08
9.625in Casing Surface	25.00	1783.00	1758.00	25.00	1771.08	0.00	0.00	-67.99	149.08
8.5in Open Hole	1783.00	19048.00	17265.00	1771.08	7280.06	-67.99	149.08	-598.45	-10726.66



Actual Wellpath Report

FALKEN 33C-9-L AWP

Page 10 of 11



REFERENCE WELLPATH IDENTIFICATION

Operator	SRC ENERGY	Slot	SLOT#07 FALKEN 33C-9-L (1814'FSL & 276'FEL, SEC.11)
Area	COLORADO	Well	FALKEN 33C-9-L
Field	WELD COUNTY (NAD83,TRUE NORTH)	Wellbore	FALKEN 33C-9-L AWB
Facility	SEC.11-T06N-R66W		

TARGETS

Name	TVD [ft]	North [ft]	East [ft]	Grid East [US ft]	Grid North [US ft]	Latitude	Longitude	Shape
SEC.10-T6N-R66W	0.00	89.99	0.83	3212478.20	1426196.25	40°30'02.869"N	104°44'09.402"W	polygon
SEC.11-T6N-R66W SOUTHERN HALF	0.00	89.99	0.83	3212478.20	1426196.25	40°30'02.869"N	104°44'09.402"W	polygon
SEC.14-T6N-R66W NORTHERN HALF	0.00	89.99	0.83	3212478.20	1426196.25	40°30'02.869"N	104°44'09.402"W	polygon
SEC.9-T6N-R66W EAST QUARTER	0.00	89.99	0.83	3212478.20	1426196.25	40°30'02.869"N	104°44'09.402"W	polygon
FALKEN 33C-9-L TOP OF PROD ON PLAT (1179'FSL & 300'FWL, SEC.12)	7237.00	-634.64	571.52	3213055.10	1425476.60	40°29'55.709"N	104°44'02.015"W	circle
FALKEN 33C-9-L TOP OF PROD REV-2 (1179'FSL & 300'FWL, SEC.12)	7242.16	-634.64	571.53	3213055.10	1425476.60	40°29'55.709"N	104°44'02.015"W	circle
FALKEN 33C-9-L BHL ON PLAT (1182'FSL & 300'FEL, SEC.09)	7258.00	-611.19	-10700.72	3201783.47	1425402.92	40°29'55.918"N	104°46'27.926"W	circle
FALKEN 33C-9-L BHL REV-2 (1182'FSL & 300'FEL, SEC.09)	7282.63	-611.19	-10700.72	3201783.47	1425402.92	40°29'55.918"N	104°46'27.926"W	circle

WELLPATH COMPOSITION - Ref Wellbore: FALKEN 33C-9-L AWB Ref Wellpath: FALKEN 33C-9-L AWP

Start MD [ft]	End MD [ft]	Positional Uncertainty Model	Log Name/Comment	Wellbore
25.00	1743.00	Custom BHI NaviTrak (Standard Rotating+Axial Corr) (Rockies 0.03Gt model)	13 1/2" APS EM SURVEYS <153-1743>	FALKEN 33C-9-L AWB
1743.00	19018.00	Custom BHI AutoTrak Curve (IFR1, Short) (Rockies 0.03Gt model)	8 1/2" BHI ATC (IFR1/SHORT) (ROCKIES 0.03GT MODEL) <1837'-19018'>	FALKEN 33C-9-L AWB
19018.00	19048.00	Blind Drilling (std)	Projection to bit	FALKEN 33C-9-L AWB



SRC ENERGY

Actual Wellpath Report

FALKEN 33C-9-L AWP

Page 11 of 11



REFERENCE WELLPATH IDENTIFICATION

Operator	SRC ENERGY	Slot	SLOT#07 FALKEN 33C-9-L (1814'FSL & 276'FEL, SEC.11)
Area	COLORADO	Well	FALKEN 33C-9-L
Field	WELD COUNTY (NAD83,TRUE NORTH)	Wellbore	FALKEN 33C-9-L AWB
Facility	SEC.11-T06N-R66W		

WELLPATH COMMENTS

MD [ft]	Inclination [°]	Azimuth [°]	TVD [ft]	Comment
7788.00	88.460	271.200	7247.05	LANDING POINT (1187'FSL & 254'FWL, SEC.12)
19018.00	90.000	274.170	7280.06	LAST BHGE MWD SURVEY (1193'FSL & 296'FEL, SEC.09)
19048.00	90.000	274.170	7280.06	PROJECTION TO BIT (1195'FSL & 326'FEL, SEC.09)