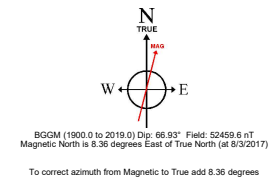
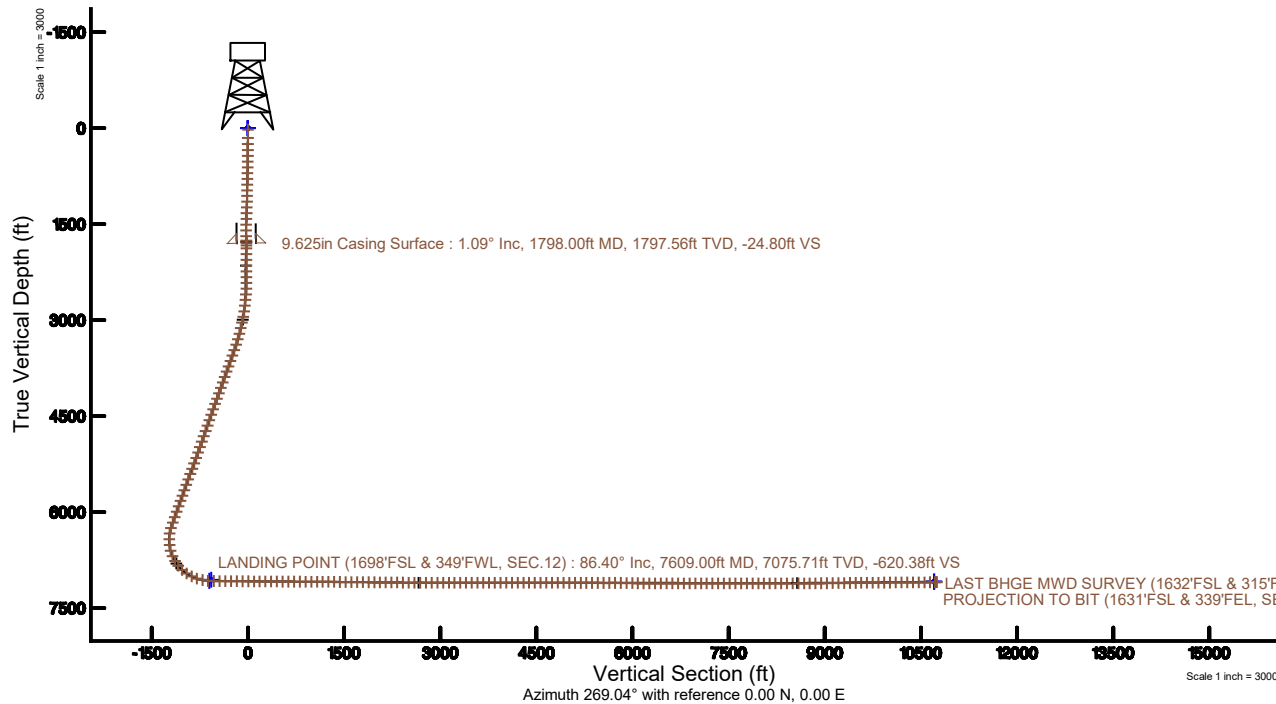
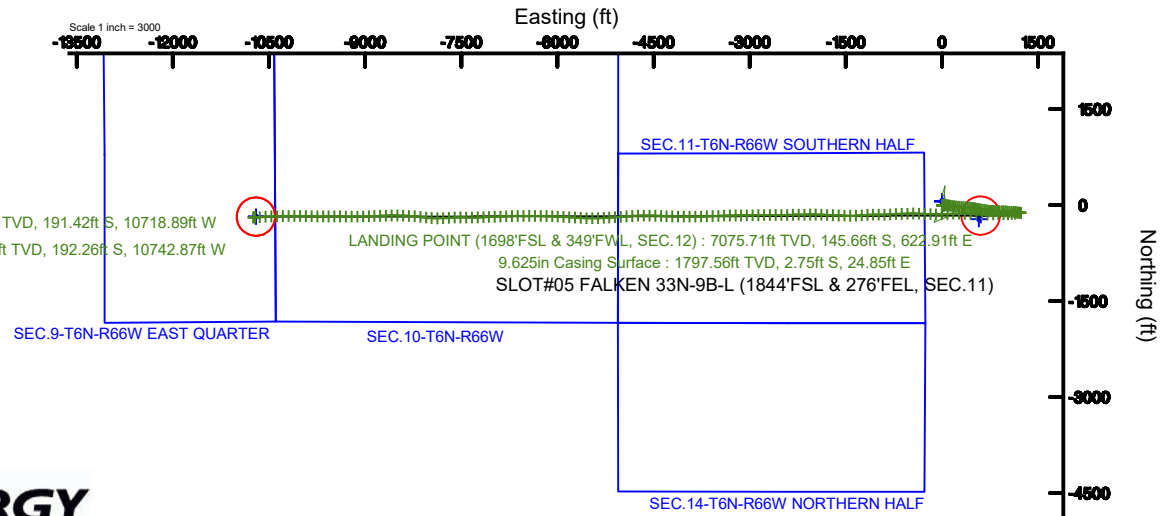


# SRC ENERGY

Location: COLORADO Slot: SLOT#05 FALKEN 33N-9B-L (1844'FSL & 276'FEL, SEC.11)  
Field: WELD COUNTY (NAD83, TRUE NORTH) Well: FALKEN 33N-9B-L  
Facility: SEC.11-T06N-R66W Wellbore: FALKEN 33N-9B-L PWB

Plot reference wellpath is FALKEN 33N-9B-L (REV-C.0)	Grid System: NAD83 / Lambert Colorado SP, Northern Zone (501), US feet
True vertical depths are referenced to PRECISION DRILLING 562 (25') (RKB)	* = Wellpath was transformed from a different geodetic datum
Measured depths are referenced to PRECISION DRILLING 562 (25') (RKB)	North Reference: True north
PRECISION DRILLING 562 (25') (RKB) to Mean Sea Level: 4835 feet	Scale: True distance
Mean Sea Level to Mud line (At Slot: SLOT#05 FALKEN 33N-9B-L (1844'FSL & 276'FEL, SEC.11)): 0 feet	Depths are in feet
Coordinates are in feet referenced to Slot	Created by: doddanna on 2018-02-07
	Database: WellArchitectDB





# Actual Wellpath Report

FALKEN 33N-9B-L AWP  
Page 1 of 11



## REFERENCE WELLPATH IDENTIFICATION

Operator	SRC ENERGY	Slot	SLOT#05 FALKEN 33N-9B-L (1844'FSL & 276'FEL, SEC.11)
Area	COLORADO	Well	FALKEN 33N-9B-L
Field	WELD COUNTY (NAD83,TRUE NORTH)	Wellbore	FALKEN 33N-9B-L AWP
Facility	SEC.11-T06N-R66W		

## REPORT SETUP INFORMATION

Projection System	NAD83 / Lambert Colorado SP, Northern Zone (501), US feet	Software System	WellArchitect® 5.0
North Reference	True	User	Doddanna
Scale	0.999966	Report Generated	2/7/2018 at 2:13:47 PM
Convergence at slot	0.49° East	Database/Source file	WellArchitectDB/FALKEN_33N-9B-L_AWP.xml

## WELLPATH LOCATION

	Local coordinates		Grid coordinates		Geographic coordinates	
	North[ft]	East[ft]	Easting[US ft]	Northing[US ft]	Latitude	Longitude
Slot Location	-60.11	-0.56	3212478.17	1426136.14	40°30'02.275"N	104°44'09.409"W
Facility Reference Pt			3212478.20	1426196.25	40°30'02.869"N	104°44'09.402"W
Field Reference Pt			3171284.48	1426358.81	40°30'07.643"N	104°53'02.634"W

## WELLPATH DATUM

Calculation method	Minimum curvature	PRECISION DRILLING 562 (25') (RKB) to Facility Vertical Datum	4835.00ft
Horizontal Reference Pt	Slot	PRECISION DRILLING 562 (25') (RKB) to Mean Sea Level	4835.00ft
Vertical Reference Pt	PRECISION DRILLING 562 (25') (RKB)	PRECISION DRILLING 562 (25') (RKB) to Mud Line at Slot (SLOT#05 FALKEN 33N-9B-L (1844'FSL & 276'FEL, SEC.11))	4835.00ft
MD Reference Pt	PRECISION DRILLING 562 (25') (RKB)	Section Origin	N 0.00, E 0.00 ft
Field Vertical Reference	Mean Sea Level	Section Azimuth	269.04°



# Actual Wellpath Report

FALKEN 33N-9B-L AWP

Page 2 of 11



## REFERENCE WELLPATH IDENTIFICATION

Operator	SRC ENERGY	Slot	SLOT#05 FALKEN 33N-9B-L (1844'FSL & 276'FEL, SEC.11)
Area	COLORADO	Well	FALKEN 33N-9B-L
Field	WELD COUNTY (NAD83,TRUE NORTH)	Wellbore	FALKEN 33N-9B-L AWB
Facility	SEC.11-T06N-R66W		

## WELLPATH DATA (215 stations) † = interpolated/extrapolated station

MD [ft]	Inclination [°]	Azimuth [°]	TVD [ft]	Vert Sect [ft]	North [ft]	East [ft]	DLS [°/100ft]	Comments
0.00†	0.000	140.700	0.00	0.00	0.00	0.00	0.00	
25.00	0.000	140.700	25.00	0.00	0.00	0.00	0.00	
153.00	0.490	140.700	153.00	-0.34	-0.42	0.35	0.38	
247.00	0.580	133.800	246.99	-0.93	-1.06	0.94	0.12	
342.00	0.510	171.850	341.99	-1.32	-1.82	1.35	0.38	
436.00	0.300	185.760	435.99	-1.34	-2.47	1.39	0.25	
526.00	1.040	89.360	525.98	-2.13	-2.70	2.18	1.24	
614.00	1.610	84.850	613.96	-4.17	-2.58	4.21	0.66	
704.00	1.580	86.090	703.92	-6.67	-2.38	6.71	0.05	
793.00	1.150	86.130	792.90	-8.78	-2.24	8.82	0.48	
883.00	0.910	89.200	882.88	-10.40	-2.17	10.44	0.27	
972.00	0.950	98.260	971.87	-11.83	-2.26	11.87	0.17	
1061.00	0.540	104.950	1060.86	-12.97	-2.48	13.01	0.47	
1151.00	1.770	79.800	1150.84	-14.75	-2.34	14.79	1.45	
1240.00	2.050	72.040	1239.80	-17.62	-1.61	17.65	0.43	
1330.00	2.120	74.890	1329.74	-20.78	-0.68	20.79	0.14	
1419.00	2.130	78.070	1418.67	-24.00	0.10	24.00	0.13	
1509.00	1.700	106.400	1508.63	-26.91	0.06	26.92	1.14	
1598.00	1.110	176.170	1597.60	-28.22	-1.17	28.24	1.89	
1688.00	1.590	243.350	1687.58	-27.14	-2.60	27.18	1.72	
1758.00	1.190	274.280	1757.56	-25.54	-2.98	25.59	1.19	
1837.00	1.240	326.510	1836.55	-24.26	-2.21	24.30	1.36	
1882.00	0.710	332.660	1881.54	-23.87	-1.55	23.90	1.20	
1972.00	0.060	224.890	1971.54	-23.59	-1.09	23.61	0.81	
2061.00	0.090	231.710	2060.54	-23.50	-1.17	23.53	0.04	
2151.00	0.030	328.950	2150.54	-23.44	-1.19	23.46	0.11	
2239.00	0.040	20.390	2238.54	-23.44	-1.14	23.46	0.04	
2329.00	0.100	231.580	2328.54	-23.38	-1.16	23.41	0.15	
2419.00	0.090	173.620	2418.54	-23.33	-1.28	23.35	0.10	
2508.00	1.990	74.630	2507.52	-24.83	-0.94	24.85	2.25	



# Actual Wellpath Report

FALKEN 33N-9B-L AWP

Page 3 of 11



## REFERENCE WELLPATH IDENTIFICATION

Operator	SRC ENERGY	Slot	SLOT#05 FALKEN 33N-9B-L (1844'FSL & 276'FEL, SEC.11)
Area	COLORADO	Well	FALKEN 33N-9B-L
Field	WELD COUNTY (NAD83,TRUE NORTH)	Wellbore	FALKEN 33N-9B-L AWP
Facility	SEC.11-T06N-R66W		

## WELLPATH DATA (215 stations)

MD [ft]	Inclination [°]	Azimuth [°]	TVD [ft]	Vert Sect [ft]	North [ft]	East [ft]	DLS [°/100ft]	Comments
2598.00	4.810	74.160	2597.35	-29.99	0.50	29.99	3.13	
2687.00	4.910	88.430	2686.04	-37.41	1.63	37.39	1.36	
2776.00	7.120	99.790	2774.55	-46.64	0.79	46.63	2.81	
2866.00	8.830	93.850	2863.67	-59.00	-0.62	59.02	2.11	
2955.00	10.690	92.430	2951.38	-74.05	-1.43	74.08	2.11	
3045.00	12.760	97.070	3039.50	-92.23	-3.00	92.29	2.53	
3134.00	13.740	100.170	3126.13	-112.33	-6.08	112.45	1.36	
3223.00	14.920	98.800	3212.36	-133.99	-9.70	134.18	1.38	
3313.00	16.480	98.150	3299.00	-158.02	-13.28	158.26	1.74	
3403.00	18.130	99.150	3384.92	-184.41	-17.32	184.73	1.86	
3492.00	19.600	96.830	3469.14	-212.83	-21.30	213.22	1.85	
3582.00	19.520	95.730	3553.95	-242.72	-24.59	243.17	0.42	
3671.00	19.830	95.120	3637.75	-272.50	-27.42	273.00	0.42	
3761.00	19.700	93.780	3722.45	-302.80	-29.79	303.34	0.52	
3850.00	19.630	93.810	3806.26	-332.65	-31.77	333.23	0.08	
3940.00	19.670	94.500	3891.02	-362.79	-33.96	363.41	0.26	
4029.00	20.060	94.310	3974.72	-392.90	-36.28	393.56	0.44	
4119.00	19.790	95.680	4059.34	-423.40	-38.95	424.12	0.60	
4208.00	19.950	96.810	4143.04	-453.41	-42.24	454.19	0.47	
4298.00	19.390	97.420	4227.79	-483.40	-45.99	484.25	0.66	
4387.00	19.630	98.690	4311.68	-512.76	-50.16	513.67	0.55	
4477.00	19.400	99.780	4396.51	-542.35	-54.98	543.35	0.48	
4566.00	19.380	100.280	4480.46	-571.35	-60.13	572.44	0.19	
4656.00	19.630	100.230	4565.29	-600.83	-65.48	602.01	0.28	
4745.00	19.770	100.770	4649.08	-630.23	-70.95	631.51	0.26	
4835.00	19.670	99.950	4733.81	-660.01	-76.41	661.39	0.33	
4924.00	19.630	98.830	4817.62	-689.45	-81.29	690.91	0.43	
5014.00	19.600	96.180	4902.40	-719.32	-85.24	720.86	0.99	
5103.00	19.660	94.670	4986.23	-749.03	-88.06	750.62	0.57	
5192.00	19.670	93.130	5070.04	-778.87	-90.10	780.50	0.58	



# Actual Wellpath Report

FALKEN 33N-9B-L AWP

Page 4 of 11



## REFERENCE WELLPATH IDENTIFICATION

Operator	SRC ENERGY	Slot	SLOT#05 FALKEN 33N-9B-L (1844'FSL & 276'FEL, SEC.11)
Area	COLORADO	Well	FALKEN 33N-9B-L
Field	WELD COUNTY (NAD83,TRUE NORTH)	Wellbore	FALKEN 33N-9B-L AWB
Facility	SEC.11-T06N-R66W		

## WELLPATH DATA (215 stations)

MD [ft]	Inclination [°]	Azimuth [°]	TVD [ft]	Vert Sect [ft]	North [ft]	East [ft]	DLS [°/100ft]	Comments
5282.00	19.380	93.130	5154.86	-808.88	-91.74	810.53	0.32	
5372.00	19.880	92.040	5239.63	-839.05	-93.10	840.74	0.69	
5461.00	19.800	90.270	5323.35	-869.23	-93.71	870.93	0.68	
5551.00	19.930	89.710	5408.00	-899.81	-93.71	901.52	0.26	
5640.00	20.000	90.330	5491.65	-930.20	-93.72	931.90	0.25	
5730.00	19.860	92.420	5576.26	-960.84	-94.45	962.57	0.81	
5819.00	19.880	97.120	5659.97	-990.92	-96.97	992.69	1.79	
5909.00	19.980	95.630	5744.58	-1021.35	-100.37	1023.18	0.58	
5998.00	19.740	93.710	5828.28	-1051.43	-102.84	1053.31	0.78	
6088.00	19.240	92.180	5913.13	-1081.39	-104.38	1083.29	0.79	
6177.00	19.700	92.200	5997.04	-1111.01	-105.52	1112.94	0.52	
6267.00	19.510	94.700	6081.82	-1141.11	-107.33	1143.07	0.96	
6356.00	19.960	96.980	6165.60	-1170.94	-110.39	1172.96	1.00	
6446.00	18.970	100.070	6250.45	-1200.52	-114.82	1202.62	1.59	
6535.00	7.920	108.760	6336.89	-1220.55	-119.34	1222.73	12.59	
6625.00	0.440	93.430	6426.58	-1226.74	-121.35	1228.95	8.33	
6714.00	6.470	277.160	6515.41	-1222.11	-120.75	1224.31	7.76	
6804.00	14.570	267.530	6603.83	-1205.75	-120.60	1207.94	9.18	
6894.00	22.670	259.940	6689.06	-1177.25	-124.13	1179.51	9.38	
6983.00	30.820	258.950	6768.47	-1137.80	-131.51	1140.18	9.17	
7072.00	38.580	263.280	6841.60	-1087.66	-139.14	1090.16	9.14	
7162.00	48.440	269.310	6906.82	-1025.89	-142.84	1028.44	11.88	
7251.00	56.560	270.700	6960.95	-955.35	-142.78	957.89	9.21	
7341.00	64.050	268.180	7005.51	-877.24	-143.61	879.78	8.67	
7430.00	70.900	268.470	7039.58	-795.09	-146.01	797.65	7.70	
7520.00	78.040	270.240	7063.67	-708.43	-146.96	711.00	8.16	
7609.00	86.400	271.440	7075.71	-620.38	-145.66	622.91	9.49	LANDING POINT (1698'FSL & 349'FWL, SEC.12)
7699.00	89.230	272.400	7079.14	-530.56	-142.64	533.04	3.32	
7788.00	89.480	270.820	7080.14	-441.66	-140.14	444.08	1.80	
7877.00	89.540	273.830	7080.90	-352.82	-136.53	355.17	3.38	



# Actual Wellpath Report

FALKEN 33N-9B-L AWP

Page 5 of 11



## REFERENCE WELLPATH IDENTIFICATION

Operator	SRC ENERGY	Slot	SLOT#05 FALKEN 33N-9B-L (1844'FSL & 276'FEL, SEC.11)
Area	COLORADO	Well	FALKEN 33N-9B-L
Field	WELD COUNTY (NAD83,TRUE NORTH)	Wellbore	FALKEN 33N-9B-L AWP
Facility	SEC.11-T06N-R66W		

## WELLPATH DATA (215 stations)

MD [ft]	Inclination [°]	Azimuth [°]	TVD [ft]	Vert Sect [ft]	North [ft]	East [ft]	DLS [°/100ft]	Comments
7967.00	89.510	270.990	7081.65	-262.99	-132.75	265.26	3.16	
8056.00	89.540	266.940	7082.38	-174.01	-134.36	176.30	4.55	
8146.00	89.510	266.090	7083.13	-84.10	-139.83	86.47	0.95	
8235.00	89.290	269.420	7084.06	4.86	-143.31	-2.45	3.75	
8325.00	89.480	271.230	7085.03	94.82	-142.80	-92.44	2.02	
8414.00	89.630	271.660	7085.72	183.74	-140.56	-181.40	0.51	
8504.00	89.510	272.970	7086.40	273.59	-136.92	-271.33	1.46	
8593.00	89.630	272.140	7087.06	362.42	-132.96	-360.24	0.94	
8682.00	89.570	270.150	7087.68	451.35	-131.18	-449.21	2.24	
8772.00	89.720	267.890	7088.24	541.35	-132.72	-539.19	2.52	
8861.00	89.820	267.630	7088.60	630.32	-136.20	-628.12	0.31	
8951.00	89.750	267.630	7088.94	720.29	-139.92	-718.04	0.08	
9040.00	89.570	267.220	7089.47	809.26	-143.92	-806.95	0.50	
9130.00	89.820	267.440	7089.94	899.22	-148.11	-896.85	0.37	
9219.00	89.880	270.400	7090.18	988.21	-149.79	-985.83	3.33	
9309.00	89.600	269.210	7090.59	1078.20	-150.09	-1075.82	1.36	
9398.00	89.510	267.710	7091.28	1167.19	-152.48	-1164.79	1.69	
9488.00	89.600	265.730	7091.98	1257.10	-157.63	-1254.63	2.20	
9577.00	89.290	265.670	7092.84	1345.95	-164.31	-1343.38	0.35	
9667.00	89.320	270.390	7093.93	1435.90	-167.40	-1433.29	5.24	
9756.00	89.480	272.330	7094.86	1524.82	-165.29	-1522.26	2.19	
9846.00	89.350	272.380	7095.78	1614.67	-161.59	-1612.18	0.15	
9935.00	89.690	272.850	7096.53	1703.49	-157.53	-1701.08	0.65	
10025.00	89.380	272.850	7097.26	1793.29	-153.05	-1790.97	0.34	
10114.00	89.420	271.480	7098.19	1882.15	-149.69	-1879.90	1.54	
10204.00	89.510	271.690	7099.03	1972.05	-147.20	-1969.86	0.25	
10293.00	89.320	269.170	7099.94	2061.02	-146.53	-2058.84	2.84	
10383.00	89.260	268.580	7101.05	2151.01	-148.30	-2148.82	0.66	
10472.00	89.450	269.150	7102.06	2240.00	-150.06	-2237.79	0.68	
10562.00	89.420	268.620	7102.94	2330.00	-151.81	-2327.77	0.59	



# Actual Wellpath Report

FALKEN 33N-9B-L AWP

Page 6 of 11



## REFERENCE WELLPATH IDENTIFICATION

Operator	SRC ENERGY	Slot	SLOT#05 FALKEN 33N-9B-L (1844'FSL & 276'FEL, SEC.11)
Area	COLORADO	Well	FALKEN 33N-9B-L
Field	WELD COUNTY (NAD83,TRUE NORTH)	Wellbore	FALKEN 33N-9B-L AWP
Facility	SEC.11-T06N-R66W		

## WELLPATH DATA (215 stations)

MD [ft]	Inclination [°]	Azimuth [°]	TVD [ft]	Vert Sect [ft]	North [ft]	East [ft]	DLS [°/100ft]	Comments
10651.00	89.420	269.150	7103.84	2418.99	-153.55	-2416.75	0.60	
10741.00	89.350	269.810	7104.81	2508.98	-154.36	-2506.74	0.74	
10830.00	89.290	269.450	7105.87	2597.97	-154.94	-2595.73	0.41	
10920.00	89.380	269.660	7106.91	2687.96	-155.64	-2685.72	0.25	
11009.00	89.380	270.070	7107.87	2776.95	-155.85	-2774.72	0.46	
11099.00	90.340	269.370	7108.09	2866.94	-156.29	-2864.72	1.32	
11188.00	90.150	267.300	7107.71	2955.93	-158.87	-2953.67	2.34	
11278.00	90.220	269.880	7107.42	3045.92	-161.09	-3043.64	2.87	
11367.00	89.660	269.750	7107.52	3134.91	-161.37	-3132.64	0.65	
11456.00	90.060	269.810	7107.73	3223.90	-161.72	-3221.64	0.45	
11546.00	90.090	269.500	7107.62	3313.89	-162.26	-3311.63	0.35	
11635.00	90.250	267.380	7107.35	3402.88	-164.68	-3400.60	2.39	
11725.00	90.090	267.820	7107.08	3492.85	-168.45	-3490.52	0.52	
11814.00	90.120	268.260	7106.92	3581.84	-171.49	-3579.46	0.50	
11904.00	90.060	267.790	7106.78	3671.83	-174.59	-3669.41	0.53	
11994.00	89.970	268.320	7106.76	3761.81	-177.65	-3759.36	0.60	
12083.00	90.000	269.590	7106.78	3850.81	-179.27	-3848.34	1.43	
12172.00	90.000	271.340	7106.78	3939.78	-178.55	-3937.33	1.97	
12262.00	89.880	269.860	7106.87	4029.74	-177.61	-4027.33	1.65	
12352.00	89.910	269.690	7107.04	4119.74	-177.96	-4117.33	0.19	
12441.00	89.850	271.860	7107.23	4208.69	-176.76	-4206.31	2.44	
12531.00	90.060	272.120	7107.30	4298.57	-173.63	-4296.26	0.37	
12620.00	90.060	273.090	7107.20	4387.40	-169.59	-4385.16	1.09	
12710.00	89.910	270.730	7107.23	4477.28	-166.59	-4475.11	2.63	
12799.00	89.880	272.000	7107.39	4566.20	-164.47	-4564.08	1.43	
12889.00	89.970	269.900	7107.51	4656.15	-162.98	-4654.06	2.34	
12978.00	89.780	266.740	7107.70	4745.13	-165.58	-4743.01	3.56	
13067.00	90.000	265.590	7107.87	4834.01	-171.54	-4831.81	1.32	
13157.00	89.820	266.840	7108.01	4923.90	-177.48	-4921.61	1.40	
13247.00	89.970	265.790	7108.18	5013.80	-183.26	-5011.43	1.18	



# Actual Wellpath Report

FALKEN 33N-9B-L AWP

Page 7 of 11



## REFERENCE WELLPATH IDENTIFICATION

Operator	SRC ENERGY	Slot	SLOT#05 FALKEN 33N-9B-L (1844'FSL & 276'FEL, SEC.11)
Area	COLORADO	Well	FALKEN 33N-9B-L
Field	WELD COUNTY (NAD83,TRUE NORTH)	Wellbore	FALKEN 33N-9B-L AWP
Facility	SEC.11-T06N-R66W		

## WELLPATH DATA (215 stations)

MD [ft]	Inclination [°]	Azimuth [°]	TVD [ft]	Vert Sect [ft]	North [ft]	East [ft]	DLS [°/100ft]	Comments
13336.00	90.000	266.360	7108.20	5102.68	-189.35	-5100.22	0.64	
13426.00	89.850	266.470	7108.32	5192.59	-194.98	-5190.04	0.21	
13515.00	89.970	266.920	7108.46	5281.51	-200.11	-5278.89	0.52	
13605.00	89.850	268.560	7108.60	5371.49	-203.66	-5368.82	1.83	
13694.00	89.910	270.070	7108.79	5460.48	-204.73	-5457.81	1.70	
13784.00	89.910	271.590	7108.93	5550.43	-203.42	-5547.80	1.69	
13873.00	90.120	273.370	7108.91	5639.27	-199.57	-5636.71	2.01	
13963.00	90.090	273.780	7108.74	5728.99	-193.96	-5726.54	0.46	
14052.00	88.920	273.400	7109.51	5817.70	-188.39	-5815.36	1.38	
14142.00	89.020	273.070	7111.13	5907.45	-183.31	-5905.20	0.38	
14231.00	88.920	272.440	7112.73	5996.24	-179.03	-5994.08	0.72	
14320.00	89.020	272.350	7114.33	6085.08	-175.31	-6082.99	0.15	
14410.00	89.510	271.680	7115.48	6174.95	-172.15	-6172.92	0.92	
14500.00	90.000	271.250	7115.87	6264.86	-169.85	-6262.89	0.72	
14589.00	89.880	270.800	7115.96	6353.81	-168.26	-6351.88	0.52	
14678.00	90.000	270.280	7116.05	6442.78	-167.42	-6440.88	0.60	
14768.00	89.970	269.410	7116.08	6532.77	-167.66	-6530.87	0.97	
14858.00	90.000	268.530	7116.10	6622.77	-169.28	-6620.86	0.98	
14947.00	90.000	268.320	7116.10	6711.76	-171.72	-6709.82	0.24	
15037.00	89.750	267.630	7116.30	6801.75	-174.90	-6799.77	0.82	
15126.00	89.940	267.770	7116.54	6890.72	-178.48	-6888.70	0.27	
15216.00	90.000	267.920	7116.58	6980.70	-181.86	-6978.63	0.18	
15305.00	89.820	267.350	7116.72	7069.68	-185.53	-7067.56	0.67	
15394.00	90.030	267.680	7116.84	7158.64	-189.39	-7156.47	0.44	
15484.00	90.150	268.730	7116.70	7248.63	-192.21	-7246.43	1.17	
15574.00	90.000	269.430	7116.58	7338.63	-193.66	-7336.41	0.80	
15663.00	90.030	271.820	7116.56	7427.59	-192.69	-7425.40	2.69	
15753.00	89.880	269.590	7116.63	7517.55	-191.58	-7515.39	2.48	
15842.00	89.940	267.130	7116.77	7606.54	-194.13	-7604.35	2.76	
15931.00	89.910	266.320	7116.89	7695.46	-199.21	-7693.20	0.91	





# Actual Wellpath Report

FALKEN 33N-9B-L AWP

Page 8 of 11



## REFERENCE WELLPATH IDENTIFICATION

Operator	SRC ENERGY	Slot	SLOT#05 FALKEN 33N-9B-L (1844'FSL & 276'FEL, SEC.11)
Area	COLORADO	Well	FALKEN 33N-9B-L
Field	WELD COUNTY (NAD83,TRUE NORTH)	Wellbore	FALKEN 33N-9B-L AWP
Facility	SEC.11-T06N-R66W		

## WELLPATH DATA (215 stations)

MD [ft]	Inclination [°]	Azimuth [°]	TVD [ft]	Vert Sect [ft]	North [ft]	East [ft]	DLS [°/100ft]	Comments
16021.00	90.030	266.760	7116.93	7785.38	-204.64	-7783.04	0.51	
16110.00	90.000	270.770	7116.91	7874.36	-206.56	-7872.00	4.51	
16200.00	89.940	274.360	7116.96	7964.17	-202.53	-7961.89	3.99	
16289.00	90.000	276.890	7117.00	8052.58	-193.81	-8050.46	2.84	
16379.00	89.910	276.190	7117.07	8141.81	-183.56	-8139.87	0.78	
16468.00	90.000	275.140	7117.14	8230.21	-174.77	-8228.43	1.18	
16558.00	89.970	273.800	7117.17	8319.80	-167.76	-8318.16	1.49	
16647.00	90.090	271.490	7117.12	8408.62	-163.65	-8407.06	2.60	
16737.00	90.000	270.560	7117.05	8498.57	-162.04	-8497.04	1.04	
16826.00	89.940	269.890	7117.10	8587.55	-161.69	-8586.04	0.76	
16916.00	90.430	268.050	7116.81	8677.54	-163.31	-8676.02	2.12	
17005.00	90.580	267.350	7116.02	8766.51	-166.88	-8764.95	0.80	
17095.00	90.490	267.600	7115.18	8856.48	-170.85	-8854.85	0.30	
17184.00	90.620	266.780	7114.32	8945.42	-175.21	-8943.74	0.93	
17272.00	90.550	268.730	7113.42	9033.39	-178.66	-9031.67	2.22	
17362.00	91.390	269.990	7111.90	9123.38	-179.66	-9121.64	1.68	
17451.00	90.400	270.700	7110.51	9212.34	-179.13	-9210.63	1.37	
17541.00	90.550	270.820	7109.76	9302.30	-177.93	-9300.62	0.21	
17630.00	90.340	270.390	7109.07	9391.26	-176.99	-9389.61	0.54	
17720.00	90.550	270.100	7108.37	9481.24	-176.61	-9479.61	0.40	
17809.00	90.740	269.650	7107.37	9570.22	-176.80	-9568.60	0.55	
17898.00	90.430	269.710	7106.46	9659.21	-177.30	-9657.60	0.35	
17988.00	90.550	270.490	7105.69	9749.19	-177.14	-9747.59	0.88	
18078.00	90.460	272.410	7104.90	9839.10	-174.86	-9837.56	2.14	
18167.00	90.430	272.260	7104.20	9927.95	-171.24	-9926.48	0.17	
18257.00	90.430	270.830	7103.53	10017.86	-168.81	-10016.44	1.59	
18346.00	90.310	269.900	7102.95	10106.84	-168.25	-10105.44	1.05	
18436.00	90.490	268.890	7102.33	10196.83	-169.20	-10195.43	1.14	
18525.00	90.340	268.390	7101.68	10285.83	-171.31	-10284.40	0.59	
18615.00	90.460	267.990	7101.05	10375.81	-174.15	-10374.35	0.46	



# Actual Wellpath Report

FALKEN 33N-9B-L AWP

Page 9 of 11



## REFERENCE WELLPATH IDENTIFICATION

Operator	SRC ENERGY	Slot	SLOT#05 FALKEN 33N-9B-L (1844'FSL & 276'FEL, SEC.11)
Area	COLORADO	Well	FALKEN 33N-9B-L
Field	WELD COUNTY (NAD83,TRUE NORTH)	Wellbore	FALKEN 33N-9B-L AWB
Facility	SEC.11-T06N-R66W		

## WELLPATH DATA (215 stations)

MD [ft]	Inclination [°]	Azimuth [°]	TVD [ft]	Vert Sect [ft]	North [ft]	East [ft]	DLS [°/100ft]	Comments
18704.00	90.520	267.710	7100.29	10464.79	-177.49	-10463.29	0.32	
18794.00	90.370	266.410	7099.59	10554.73	-182.11	-10553.16	1.45	
18883.00	90.520	266.420	7098.90	10643.64	-187.67	-10641.99	0.17	
18960.00	90.490	268.000	7098.22	10720.59	-191.42	-10718.89	2.05	LAST BHGE MWD SURVEY (1632'FSL & 315'FEL, SEC.09)
18984.00	90.490	268.000	7098.02	10744.59	-192.26	-10742.87	0.00	PROJECTION TO BIT (1631'FSL & 339'FEL, SEC.09)

## HOLE & CASING SECTIONS - Ref Wellbore: FALKEN 33N-9B-L AWB Ref Wellpath: FALKEN 33N-9B-L AWP

String/Diameter	Start MD [ft]	End MD [ft]	Interval [ft]	Start TVD [ft]	End TVD [ft]	Start N/S [ft]	Start E/W [ft]	End N/S [ft]	End E/W [ft]
13.5in Open Hole	25.00	1798.00	1773.00	25.00	1797.56	0.00	0.00	-2.75	24.85
9.625in Casing Surface	25.00	1798.00	1773.00	25.00	1797.56	0.00	0.00	-2.75	24.85
8.5in Open Hole	1798.00	18984.00	17186.00	1797.56	7098.02	-2.75	24.85	-192.26	-10742.87



# Actual Wellpath Report

FALKEN 33N-9B-L AWP

Page 10 of 11



## REFERENCE WELLPATH IDENTIFICATION

Operator	SRC ENERGY	Slot	SLOT#05 FALKEN 33N-9B-L (1844'FSL & 276'FEL, SEC.11)
Area	COLORADO	Well	FALKEN 33N-9B-L
Field	WELD COUNTY (NAD83,TRUE NORTH)	Wellbore	FALKEN 33N-9B-L AWB
Facility	SEC.11-T06N-R66W		

## TARGETS

Name	TVD [ft]	North [ft]	East [ft]	Grid East [US ft]	Grid North [US ft]	Latitude	Longitude	Shape
SEC.10-T6N-R66W	0.00	60.11	0.56	3212478.20	1426196.25	40°30'02.869"N	104°44'09.402"W	polygon
SEC.11-T6N-R66W SOUTHERN HALF	0.00	60.11	0.56	3212478.20	1426196.25	40°30'02.869"N	104°44'09.402"W	polygon
SEC.14-T6N-R66W NORTHERN HALF	0.00	60.11	0.56	3212478.20	1426196.25	40°30'02.869"N	104°44'09.402"W	polygon
SEC.9-T6N-R66W EAST QUARTER	0.00	60.11	0.56	3212478.20	1426196.25	40°30'02.869"N	104°44'09.402"W	polygon
FALKEN 33N-9B-L TOP OF PROD ON PLAT (1624'FSL & 300'FWL, SEC.12)	7060.00	-219.68	574.57	3213054.59	1425921.42	40°30'00.104"N	104°44'01.972"W	circle
FALKEN 33N-9B-L TOP OF PROD REV-2 (1680'FSL & 329'FWL, SEC.12)	7076.86	-163.45	603.24	3213082.77	1425977.89	40°30'00.660"N	104°44'01.601"W	circle
FALKEN 33N-9B-L BHL ON PLAT (1644'FSL & 300'FEL, SEC.09)	7086.00	-179.11	-10704.41	3201776.08	1425864.81	40°30'00.482"N	104°46'27.973"W	circle
FALKEN 33N-9B-L BHL REV-2 (1643'FSL & 300'FEL, SEC.09)	7091.64	-180.03	-10704.41	3201776.08	1425863.89	40°30'00.473"N	104°46'27.973"W	circle

## WELLPATH COMPOSITION - Ref Wellbore: FALKEN 33N-9B-L AWB Ref Wellpath: FALKEN 33N-9B-L AWP

Start MD [ft]	End MD [ft]	Positional Uncertainty Model	Log Name/Comment	Wellbore
25.00	1758.00	Custom BHI NaviTrak (Standard Rotating+Axial Corr) (Rockies 0.03Gt model)	13 1/2" APS EM SURVEYS <153'-1758">	FALKEN 33N-9B-L AWB
1758.00	18960.00	Custom BHI AutoTrak Curve (Short) (Rockies 0.03Gt model)	8 1/2" BHI ATC (IFR1 / SHORT) (ROCKIES 0.03GT MODEL <1837'-18960">	FALKEN 33N-9B-L AWB
18960.00	18984.00	Blind Drilling (std)	Projection to bit	FALKEN 33N-9B-L AWB



# Actual Wellpath Report

FALKEN 33N-9B-L AWP

Page 11 of 11



## REFERENCE WELLPATH IDENTIFICATION

Operator	SRC ENERGY	Slot	SLOT#05 FALKEN 33N-9B-L (1844'FSL & 276'FEL, SEC.11)
Area	COLORADO	Well	FALKEN 33N-9B-L
Field	WELD COUNTY (NAD83,TRUE NORTH)	Wellbore	FALKEN 33N-9B-L AWB
Facility	SEC.11-T06N-R66W		

## WELLPATH COMMENTS

MD [ft]	Inclination [°]	Azimuth [°]	TVD [ft]	Comment
7609.00	86.400	271.440	7075.71	LANDING POINT (1698'FSL & 349'FWL, SEC.12)
18960.00	90.490	268.000	7098.22	LAST BHGE MWD SURVEY (1632'FSL & 315'FEL, SEC.09)
18984.00	90.490	268.000	7098.02	PROJECTION TO BIT (1631'FSL & 339'FEL, SEC.09)