

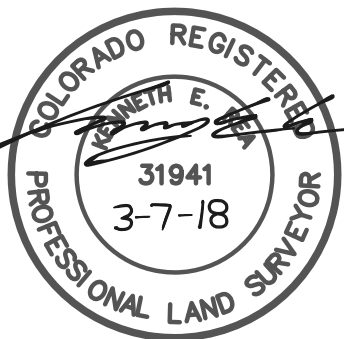
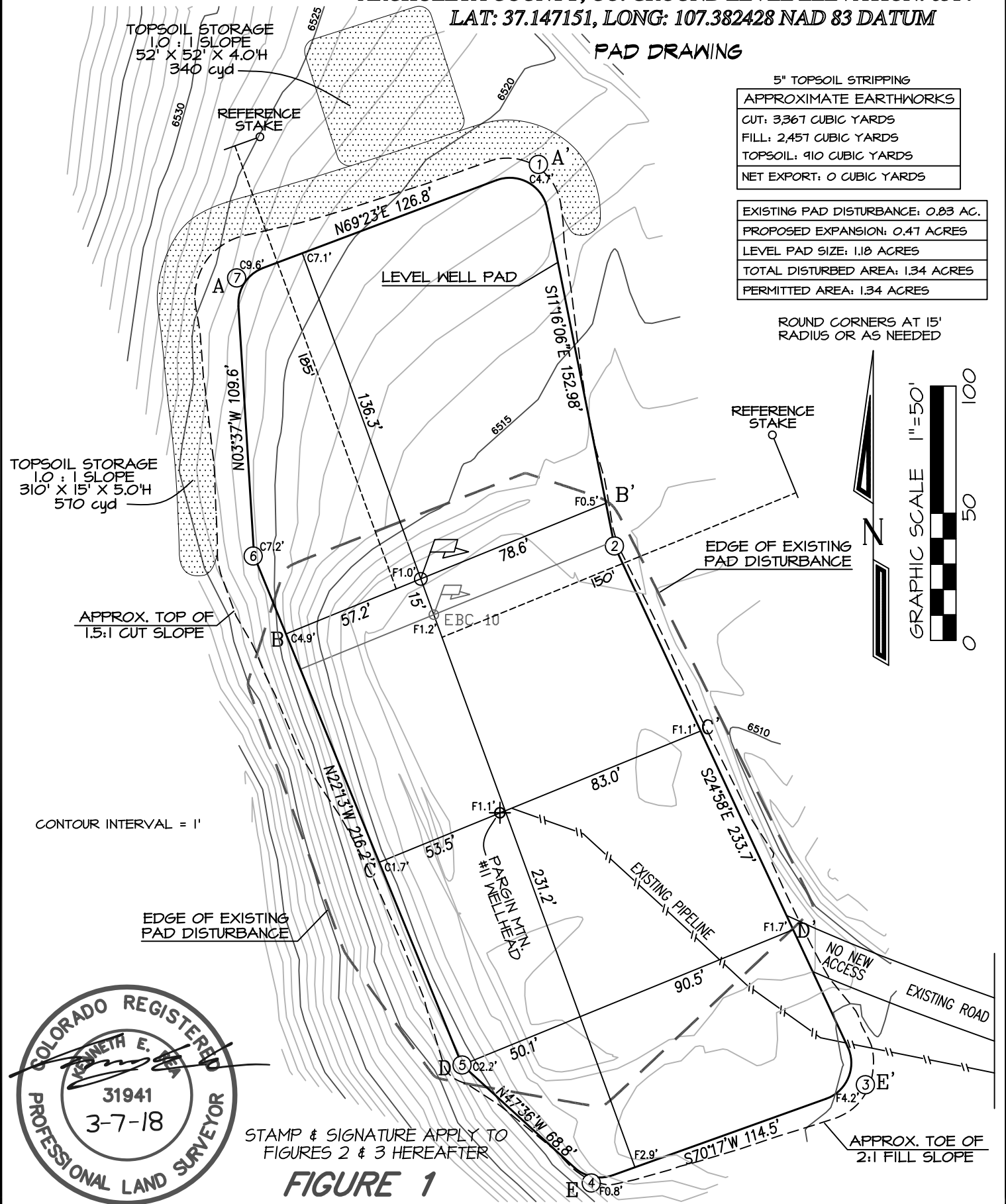
CATAMOUNT ENERGY PARTNERS: EBC #9
2220' FSL, 1862' FWL, SECTION 34, T-34-N, R-5-W, S.U.L., N.M.P.M.,
ARCHULETA COUNTY, CO. GROUND LEVEL ELEVATION: 6514'
LAT: 37.147151, LONG: 107.382428 NAD 83 DATUM

PAD DRAWING

5" TOPSOIL STRIPPING
APPROXIMATE EARTHWORKS
CUT: 3,367 CUBIC YARDS
FILL: 2,457 CUBIC YARDS
TOPSOIL: 910 CUBIC YARDS
NET EXPORT: 0 CUBIC YARDS

EXISTING PAD DISTURBANCE: 0.83 AC.
PROPOSED EXPANSION: 0.47 ACRES
LEVEL PAD SIZE: 1.18 ACRES
TOTAL DISTURBED AREA: 1.34 ACRES
PERMITTED AREA: 1.34 ACRES

ROUND CORNERS AT 15' RADIUS OR AS NEEDED



STAMP & SIGNATURE APPLY TO FIGURES 2 & 3 HEREAFTER

FIGURE 1