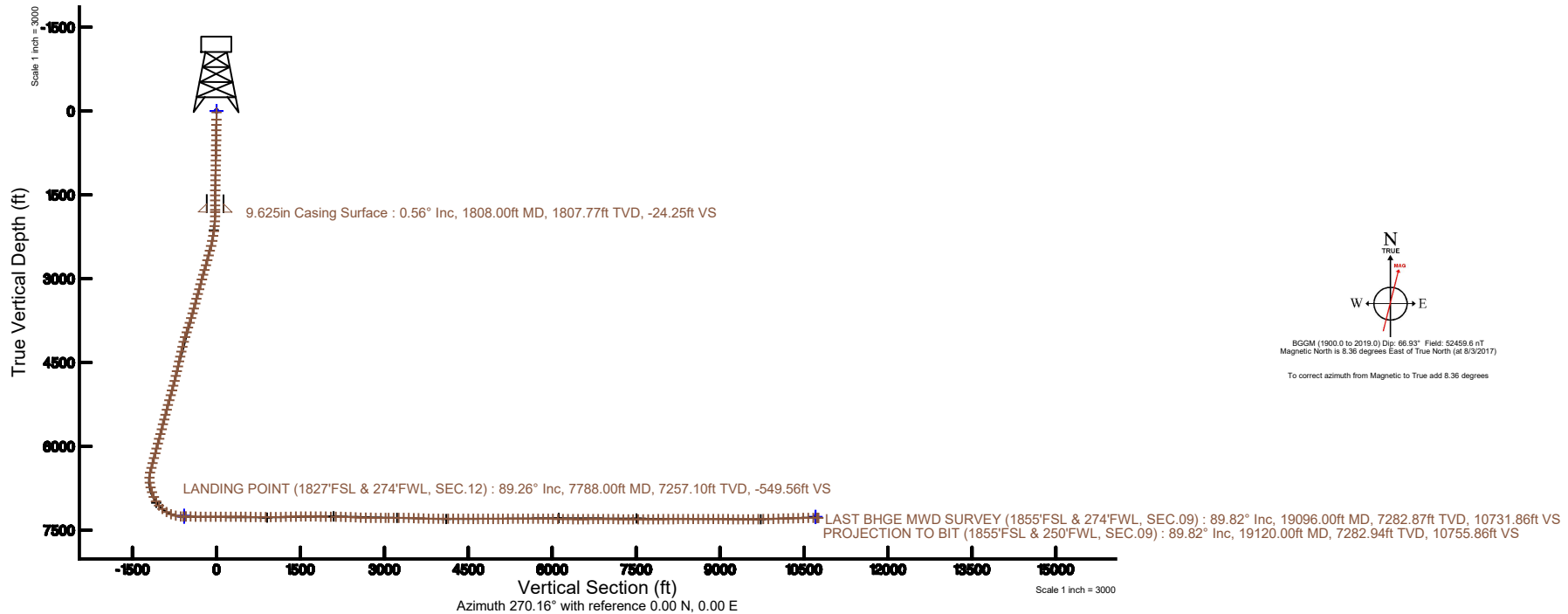
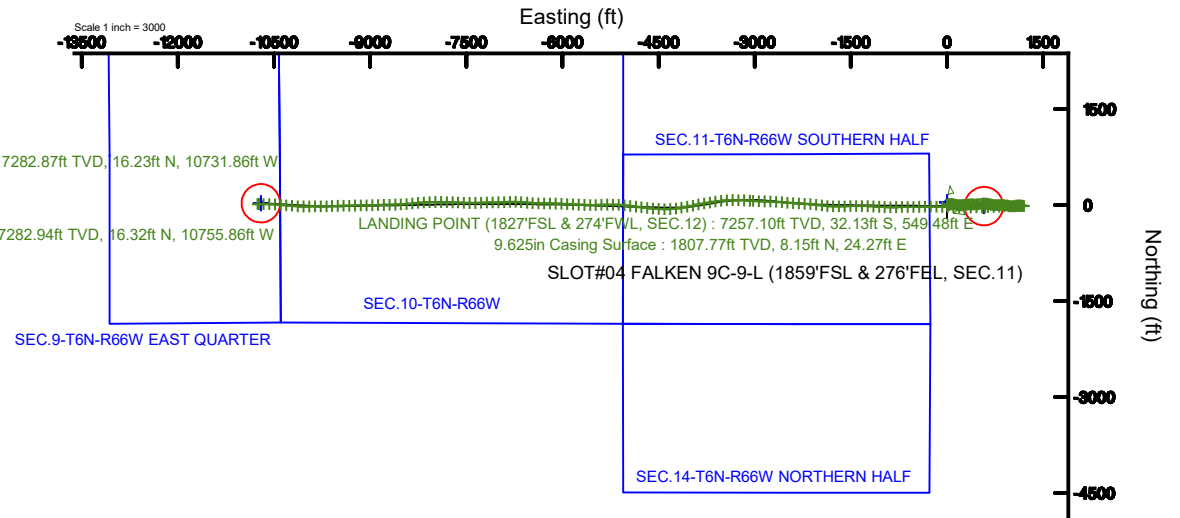


SRC ENERGY

Location: COLORADO Slot: SLOT#04 FALKEN 9C-9-L (1859'FSL & 276'FEL, SEC.11)
Field: WELD COUNTY (NAD83,TRUE NORTH) Well: FALKEN 9C-9-L
Facility: SEC.11-T06N-R66W Wellbore: FALKEN 9C-9-L PWB

Plot reference wellpath is FALKEN 9C-9-L (REV-D.0) PWP	Grid System: NAD83 / Lambert Colorado SP, Northern Zone (501), US feet
True vertical depths are referenced to PRECISION DRILLING 562 (25') (RKB)	* = Wellpath was transformed from a different geodetic datum
Measured depths are referenced to PRECISION DRILLING 562 (25') (RKB)	North Reference: True north
PRECISION DRILLING 562 (25') (RKB) to Mean Sea Level: 4835 feet	Scale: True distance
Mean Sea Level to Mud line (At Slot: SLOT#04 FALKEN 9C-9-L (1859'FSL & 276'FEL, SEC.11)): 0 feet	Depths are in feet
Coordinates are in feet referenced to Slot	Created by: doddanna on 2018-02-06
	Database: WellArchitectDB





Actual Wellpath Report

FALKEN 9C-9-L AWP

Page 1 of 11



REFERENCE WELLPATH IDENTIFICATION

Operator	SRC ENERGY	Slot	SLOT#04 FALKEN 9C-9-L (1859'FSL & 276'FEL, SEC.11)
Area	COLORADO	Well	FALKEN 9C-9-L
Field	WELD COUNTY (NAD83,TRUE NORTH)	Wellbore	FALKEN 9C-9-L AWB
Facility	SEC.11-T06N-R66W		

REPORT SETUP INFORMATION

Projection System	NAD83 / Lambert Colorado SP, Northern Zone (501), US feet	Software System	WellArchitect® 5.0
North Reference	True	User	Doddanna
Scale	0.999966	Report Generated	2/6/2018 at 11:00:15 AM
Convergence at slot	0.49° East	Database/Source file	WellArchitectDB/FALKEN_9C-9-L_AWP.xml

WELLPATH LOCATION

	Local coordinates		Grid coordinates		Geographic coordinates	
	North[ft]	East[ft]	Easting[US ft]	Northing[US ft]	Latitude	Longitude
Slot Location	-44.81	-0.28	3212478.31	1426151.44	40°30'02.426"N	104°44'09.406"W
Facility Reference Pt			3212478.20	1426196.25	40°30'02.869"N	104°44'09.402"W
Field Reference Pt			3171284.48	1426358.81	40°30'07.643"N	104°53'02.634"W

WELLPATH DATUM

Calculation method	Minimum curvature	PRECISION DRILLING 562 (25') (RKB) to Facility Vertical Datum	4835.00ft
Horizontal Reference Pt	Slot	PRECISION DRILLING 562 (25') (RKB) to Mean Sea Level	4835.00ft
Vertical Reference Pt	PRECISION DRILLING 562 (25') (RKB)	PRECISION DRILLING 562 (25') (RKB) to Mud Line at Slot (SLOT#04 FALKEN 9C-9-L (1859'FSL & 276'FEL, SEC.11))	4835.00ft
MD Reference Pt	PRECISION DRILLING 562 (25') (RKB)	Section Origin	N 0.00, E 0.00 ft
Field Vertical Reference	Mean Sea Level	Section Azimuth	270.16°



Actual Wellpath Report

FALKEN 9C-9-L AWP

Page 2 of 11



REFERENCE WELLPATH IDENTIFICATION

Operator	SRC ENERGY	Slot	SLOT#04 FALKEN 9C-9-L (1859'FSL & 276'FEL, SEC.11)
Area	COLORADO	Well	FALKEN 9C-9-L
Field	WELD COUNTY (NAD83,TRUE NORTH)	Wellbore	FALKEN 9C-9-L AWB
Facility	SEC.11-T06N-R66W		

WELLPATH DATA (217 stations) † = interpolated/extrapolated station

MD (ft)	Inclination (°)	Azimuth (°)	TVD (ft)	Vert Sect (ft)	North (ft)	East (ft)	DLS (°/100ft)	Comments
0.00†	0.000	84.700	0.00	0.00	0.00	0.00	0.00	
25.00	0.000	84.700	25.00	0.00	0.00	0.00	0.00	
153.00	0.280	84.700	153.00	-0.31	0.03	0.31	0.22	
247.00	0.290	91.490	247.00	-0.78	0.04	0.78	0.04	
342.00	1.080	77.770	341.99	-1.89	0.23	1.89	0.84	
436.00	0.970	68.120	435.98	-3.50	0.71	3.50	0.22	
526.00	0.930	99.620	525.96	-4.92	0.87	4.92	0.57	
614.00	1.250	65.380	613.95	-6.50	1.15	6.50	0.81	
704.00	1.280	65.970	703.93	-8.31	1.97	8.31	0.04	
793.00	1.060	56.330	792.91	-9.90	2.83	9.90	0.33	
883.00	0.740	26.900	882.90	-10.85	3.81	10.86	0.61	
972.00	1.180	73.210	971.89	-11.99	4.59	12.00	0.96	
1061.00	1.410	82.460	1060.86	-13.95	5.00	13.96	0.35	
1151.00	1.320	80.930	1150.84	-16.07	5.31	16.08	0.11	
1240.00	1.180	84.010	1239.82	-17.99	5.56	18.01	0.17	
1330.00	0.980	73.430	1329.80	-19.65	5.88	19.67	0.31	
1419.00	0.780	84.570	1418.79	-20.98	6.16	21.00	0.29	
1509.00	0.800	64.030	1508.78	-22.15	6.49	22.17	0.31	
1598.00	0.590	64.160	1597.78	-23.12	6.96	23.14	0.24	
1688.00	0.330	29.860	1687.77	-23.67	7.39	23.69	0.41	
1768.00	0.510	38.510	1767.77	-24.00	7.87	24.03	0.24	
1882.00	0.650	49.680	1881.76	-24.81	8.68	24.83	0.16	
1972.00	2.260	84.530	1971.73	-26.97	9.18	26.99	1.96	
2061.00	6.370	84.430	2060.46	-33.63	9.83	33.65	4.62	
2151.00	8.160	78.910	2149.74	-44.86	11.54	44.89	2.13	
2239.00	9.900	82.960	2236.64	-58.49	13.67	58.53	2.10	
2329.00	11.630	89.280	2325.06	-75.24	14.73	75.28	2.32	
2419.00	14.530	96.710	2412.72	-95.53	13.53	95.57	3.72	
2508.00	14.650	101.740	2498.86	-117.65	9.93	117.68	1.43	
2597.00	15.850	102.660	2584.72	-140.54	4.98	140.56	1.38	



Actual Wellpath Report

FALKEN 9C-9-L AWP

Page 3 of 11



REFERENCE WELLPATH IDENTIFICATION

Operator	SRC ENERGY	Slot	SLOT#04 FALKEN 9C-9-L (1859'FSL & 276'FEL, SEC.11)
Area	COLORADO	Well	FALKEN 9C-9-L
Field	WELD COUNTY (NAD83,TRUE NORTH)	Wellbore	FALKEN 9C-9-L AWP
Facility	SEC.11-T06N-R66W		

WELLPATH DATA (217 stations)

MD (ft)	Inclination (°)	Azimuth (°)	TVD (ft)	Vert Sect (ft)	North (ft)	East (ft)	DLS (°/100ft)	Comments
2687.00	15.550	97.920	2671.37	-164.50	0.62	164.50	1.46	
2776.00	15.860	92.480	2757.05	-188.47	-1.55	188.47	1.69	
2866.00	15.770	87.110	2843.65	-212.97	-1.46	212.97	1.63	
2955.00	15.680	82.260	2929.32	-236.96	0.77	236.96	1.48	
3045.00	15.490	83.980	3016.01	-260.96	3.66	260.97	0.56	
3134.00	15.620	86.630	3101.75	-284.73	5.61	284.75	0.81	
3223.00	15.590	85.170	3187.47	-308.60	7.33	308.63	0.44	
3313.00	15.690	84.010	3274.14	-332.75	9.61	332.78	0.36	
3403.00	15.140	85.000	3360.90	-356.56	11.91	356.59	0.68	
3492.00	14.910	91.200	3446.86	-379.58	12.68	379.62	1.82	
3582.00	15.500	92.400	3533.71	-403.18	11.94	403.21	0.74	
3671.00	15.580	92.100	3619.46	-427.00	11.00	427.04	0.13	
3761.00	17.160	88.120	3705.81	-452.35	10.99	452.39	2.15	
3850.00	17.760	85.010	3790.71	-479.00	12.60	479.03	1.25	
3939.00	17.800	81.320	3875.46	-505.96	15.84	506.00	1.27	
4029.00	17.740	80.600	3961.17	-533.07	20.15	533.13	0.25	
4119.00	17.700	85.350	4046.90	-560.23	23.50	560.29	1.61	
4208.00	15.470	90.300	4132.20	-585.58	24.54	585.65	2.96	
4298.00	13.330	94.820	4219.37	-607.93	23.60	608.00	2.68	
4387.00	12.920	99.010	4306.05	-627.99	21.18	628.05	1.16	
4477.00	12.740	102.150	4393.80	-647.64	17.52	647.69	0.80	
4566.00	12.760	102.920	4480.61	-666.82	13.25	666.86	0.19	
4656.00	12.970	103.420	4568.35	-686.35	8.69	686.37	0.26	
4745.00	13.120	102.130	4655.05	-705.95	4.25	705.96	0.37	
4835.00	12.870	97.530	4742.75	-725.88	0.79	725.89	1.18	
4924.00	15.190	90.190	4829.10	-747.38	-0.55	747.38	3.28	
5014.00	15.350	86.780	4915.92	-771.06	0.08	771.06	1.01	
5103.00	15.160	89.610	5001.78	-794.46	0.82	794.46	0.86	
5192.00	15.360	89.160	5087.65	-817.88	1.07	817.88	0.26	
5282.00	15.220	91.350	5174.46	-841.61	0.97	841.61	0.66	



Actual Wellpath Report

FALKEN 9C-9-L AWP

Page 4 of 11



REFERENCE WELLPATH IDENTIFICATION

Operator	SRC ENERGY	Slot	SLOT#04 FALKEN 9C-9-L (1859'FSL & 276'FEL, SEC.11)
Area	COLORADO	Well	FALKEN 9C-9-L
Field	WELD COUNTY (NAD83,TRUE NORTH)	Wellbore	FALKEN 9C-9-L AWB
Facility	SEC.11-T06N-R66W		

WELLPATH DATA (217 stations)

MD [ft]	Inclination [°]	Azimuth [°]	TVD [ft]	Vert Sect [ft]	North [ft]	East [ft]	DLS [°/100ft]	Comments
5372.00	15.260	94.530	5261.30	-865.23	-0.25	865.23	0.93	
5461.00	14.830	93.080	5347.25	-888.28	-1.78	888.28	0.64	
5551.00	14.260	91.510	5434.36	-910.87	-2.69	910.86	0.77	
5640.00	14.920	99.520	5520.50	-933.13	-4.88	933.12	2.38	
5730.00	14.830	102.780	5607.49	-955.80	-9.34	955.78	0.94	
5819.00	14.670	102.020	5693.55	-977.95	-14.21	977.91	0.28	
5909.00	15.350	95.450	5780.49	-1000.96	-17.71	1000.92	2.03	
5998.00	14.940	88.770	5866.40	-1024.17	-18.59	1024.12	2.01	
6088.00	15.310	87.460	5953.29	-1047.63	-17.81	1047.59	0.56	
6177.00	14.930	87.090	6039.21	-1070.82	-16.71	1070.78	0.44	
6267.00	15.140	89.120	6126.13	-1094.15	-15.94	1094.11	0.63	
6356.00	14.760	88.840	6212.11	-1117.10	-15.53	1117.06	0.43	
6446.00	14.630	89.220	6299.17	-1139.93	-15.14	1139.89	0.18	
6535.00	14.900	88.630	6385.23	-1162.60	-14.72	1162.57	0.35	
6625.00	14.760	87.230	6472.23	-1185.62	-13.89	1185.59	0.43	
6714.00	1.950	56.510	6560.12	-1198.26	-12.50	1198.23	14.74	
6804.00	8.300	266.260	6649.85	-1193.04	-12.07	1193.01	11.15	
6894.00	13.940	282.290	6738.15	-1175.94	-10.19	1175.92	7.09	
6983.00	18.850	284.310	6823.51	-1151.50	-4.35	1151.50	5.55	
7072.00	24.190	266.680	6906.36	-1119.30	-1.85	1119.30	9.36	
7162.00	30.230	260.320	6986.38	-1078.53	-6.73	1078.52	7.44	
7251.00	40.140	265.330	7059.04	-1027.73	-12.85	1027.70	11.59	
7341.00	49.650	267.360	7122.73	-964.42	-16.80	964.38	10.68	
7430.00	58.950	267.140	7174.61	-892.32	-20.27	892.27	10.45	
7520.00	67.990	268.020	7214.76	-811.96	-23.64	811.90	10.08	
7609.00	76.590	267.630	7241.81	-727.33	-26.87	727.26	9.67	
7699.00	86.370	268.320	7255.13	-638.50	-30.00	638.42	10.89	
7743.00	89.630	268.770	7256.67	-594.55	-31.12	594.46	7.48	
7788.00	89.260	268.640	7257.10	-549.56	-32.13	549.48	0.87	LANDING POINT (1827'FSL & 274'FWL, SEC.12)
7877.00	89.420	268.150	7258.13	-460.61	-34.63	460.52	0.58	



Actual Wellpath Report

FALKEN 9C-9-L AWP

Page 5 of 11



REFERENCE WELLPATH IDENTIFICATION

Operator	SRC ENERGY	Slot	SLOT#04 FALKEN 9C-9-L (1859'FSL & 276'FEL, SEC.11)
Area	COLORADO	Well	FALKEN 9C-9-L
Field	WELD COUNTY (NAD83,TRUE NORTH)	Wellbore	FALKEN 9C-9-L AWB
Facility	SEC.11-T06N-R66W		

WELLPATH DATA (217 stations)

MD [ft]	Inclination [°]	Azimuth [°]	TVD [ft]	Vert Sect [ft]	North [ft]	East [ft]	DLS [°/100ft]	Comments
7967.00	89.350	268.530	7259.09	-370.66	-37.23	370.56	0.43	
8056.00	89.510	269.900	7259.98	-281.68	-38.45	281.58	1.55	
8146.00	89.420	271.450	7260.82	-191.69	-37.39	191.59	1.73	
8235.00	89.380	272.900	7261.75	-102.75	-34.01	102.66	1.63	
8325.00	89.970	272.050	7262.26	-12.83	-30.13	12.75	1.15	
8414.00	90.090	271.630	7262.22	76.13	-27.27	-76.21	0.49	
8504.00	90.060	270.910	7262.10	166.11	-25.28	-166.18	0.80	
8593.00	90.060	269.810	7262.00	255.11	-24.72	-255.18	1.24	
8682.00	89.510	269.200	7262.34	344.10	-25.49	-344.18	0.92	
8772.00	89.510	269.130	7263.11	434.09	-26.80	-434.16	0.08	
8861.00	89.540	269.440	7263.85	523.07	-27.91	-523.15	0.35	
8951.00	89.480	269.150	7264.62	613.06	-29.02	-613.14	0.33	
9040.00	89.600	268.740	7265.33	702.04	-30.65	-702.12	0.48	
9130.00	89.480	269.320	7266.05	792.02	-32.18	-792.11	0.66	
9219.00	89.600	270.040	7266.77	881.01	-32.67	-881.10	0.82	
9309.00	89.540	271.570	7267.44	971.00	-31.41	-971.09	1.70	
9398.00	91.110	273.760	7266.94	1059.90	-27.27	-1059.98	3.03	
9488.00	91.320	273.310	7265.03	1149.73	-21.72	-1149.79	0.55	
9577.00	91.380	273.150	7262.93	1238.58	-16.71	-1238.63	0.19	
9667.00	91.320	271.220	7260.81	1328.49	-13.28	-1328.53	2.14	
9756.00	91.170	269.270	7258.88	1417.46	-12.90	-1417.51	2.20	
9846.00	90.150	267.750	7257.84	1507.42	-15.24	-1507.47	2.03	
9935.00	89.970	268.060	7257.75	1596.35	-18.49	-1596.41	0.40	
10025.00	90.340	269.410	7257.50	1686.32	-20.48	-1686.38	1.56	
10114.00	89.690	271.480	7257.48	1775.31	-19.79	-1775.37	2.44	
10204.00	89.200	275.330	7258.35	1865.15	-14.45	-1865.19	4.31	
10293.00	89.350	276.880	7259.48	1953.66	-4.98	-1953.68	1.75	
10383.00	89.510	277.880	7260.37	2042.94	6.58	-2042.93	1.13	
10472.00	89.290	274.990	7261.31	2131.39	16.55	-2131.35	3.26	
10562.00	88.650	272.200	7262.93	2221.20	22.19	-2221.15	3.18	



Actual Wellpath Report

FALKEN 9C-9-L AWP

Page 6 of 11



REFERENCE WELLPATH IDENTIFICATION

Operator	SRC ENERGY	Slot	SLOT#04 FALKEN 9C-9-L (1859'FSL & 276'FEL, SEC.11)
Area	COLORADO	Well	FALKEN 9C-9-L
Field	WELD COUNTY (NAD83,TRUE NORTH)	Wellbore	FALKEN 9C-9-L AWB
Facility	SEC.11-T06N-R66W		

WELLPATH DATA (217 stations)

MD [ft]	Inclination [°]	Azimuth [°]	TVD [ft]	Vert Sect [ft]	North [ft]	East [ft]	DLS [°/100ft]	Comments
10651.00	88.370	272.420	7265.24	2310.11	25.78	-2310.05	0.40	
10741.00	87.970	273.570	7268.11	2399.95	30.48	-2399.88	1.35	
10830.00	87.510	274.780	7271.62	2488.66	36.95	-2488.57	1.45	
10920.00	86.830	275.030	7276.07	2578.25	44.64	-2578.13	0.80	
11009.00	89.780	274.650	7278.70	2666.90	52.14	-2666.77	3.34	
11099.00	89.570	271.530	7279.21	2756.77	56.99	-2756.62	3.47	
11188.00	89.600	269.950	7279.85	2845.76	58.14	-2845.61	1.78	
11278.00	89.780	272.990	7280.34	2935.72	60.45	-2935.57	3.38	
11367.00	89.880	273.530	7280.61	3024.59	65.51	-3024.42	0.62	
11419.00	89.940	273.360	7280.69	3076.51	68.64	-3076.33	0.35	
11510.00	89.850	272.510	7280.85	3167.40	73.30	-3167.21	0.94	
11599.00	89.940	271.630	7281.02	3256.35	76.51	-3256.15	0.99	
11689.00	89.880	270.070	7281.16	3346.34	77.85	-3346.14	1.73	
11778.00	88.710	266.980	7282.25	3435.28	75.56	-3435.09	3.71	
11868.00	87.380	262.020	7285.33	3524.76	66.94	-3524.59	5.70	
11957.00	87.380	261.650	7289.39	3612.73	54.31	-3612.60	0.42	
12047.00	87.810	261.510	7293.17	3701.65	41.15	-3701.55	0.50	
12137.00	88.740	260.030	7295.88	3790.40	26.72	-3790.34	1.94	
12226.00	89.880	258.570	7296.95	3877.80	10.20	-3877.78	2.08	
12316.00	89.780	258.320	7297.22	3965.92	-7.83	-3965.96	0.30	
12405.00	89.820	259.800	7297.53	4053.25	-24.72	-4053.34	1.66	
12495.00	89.850	260.750	7297.79	4141.92	-39.92	-4142.04	1.06	
12584.00	89.850	262.520	7298.02	4229.93	-52.87	-4230.09	1.99	
12674.00	89.850	266.310	7298.26	4319.46	-61.63	-4319.65	4.21	
12764.00	89.850	271.160	7298.49	4409.41	-63.62	-4409.60	5.39	
12853.00	90.000	273.190	7298.61	4498.35	-60.24	-4498.53	2.29	
12943.00	89.970	274.460	7298.63	4588.16	-54.23	-4588.33	1.41	
13032.00	90.000	276.280	7298.66	4676.79	-45.91	-4676.93	2.05	
13121.00	89.970	277.020	7298.68	4765.22	-35.60	-4765.33	0.83	
13211.00	89.970	276.700	7298.73	4854.60	-24.85	-4854.69	0.36	



Actual Wellpath Report

FALKEN 9C-9-L AWP

Page 7 of 11



REFERENCE WELLPATH IDENTIFICATION

Operator	SRC ENERGY	Slot	SLOT#04 FALKEN 9C-9-L (1859'FSL & 276'FEL, SEC.11)
Area	COLORADO	Well	FALKEN 9C-9-L
Field	WELD COUNTY (NAD83,TRUE NORTH)	Wellbore	FALKEN 9C-9-L AWB
Facility	SEC.11-T06N-R66W		

WELLPATH DATA (217 stations)

MD [ft]	Inclination [°]	Azimuth [°]	TVD [ft]	Vert Sect [ft]	North [ft]	East [ft]	DLS [°/100ft]	Comments
13300.00	90.090	276.990	7298.68	4943.00	-14.24	-4943.05	0.35	
13390.00	90.060	276.360	7298.56	5032.41	-3.78	-5032.44	0.70	
13479.00	90.060	273.670	7298.47	5121.09	4.00	-5121.10	3.02	
13569.00	90.150	270.720	7298.30	5211.02	7.45	-5211.02	3.28	
13659.00	90.060	269.610	7298.14	5301.02	7.71	-5301.02	1.24	
13748.00	90.180	267.850	7297.95	5389.99	5.73	-5389.99	1.98	
13838.00	90.060	267.960	7297.76	5479.92	2.44	-5479.93	0.18	
13927.00	90.150	270.570	7297.60	5568.90	1.30	-5568.92	2.93	
14016.00	90.250	272.630	7297.29	5657.86	3.79	-5657.88	2.32	
14106.00	90.220	272.960	7296.92	5747.77	8.17	-5747.77	0.37	
14195.00	90.030	271.880	7296.73	5836.70	11.93	-5836.69	1.23	
14285.00	89.230	273.170	7297.31	5926.62	15.90	-5926.60	1.69	
14374.00	89.170	272.240	7298.55	6015.52	20.10	-6015.49	1.05	
14464.00	89.080	272.100	7299.93	6105.45	23.50	-6105.41	0.18	
14553.00	89.200	269.320	7301.26	6194.43	24.61	-6194.39	3.13	
14643.00	89.230	270.560	7302.50	6284.42	24.51	-6284.38	1.38	
14732.00	89.050	271.940	7303.83	6373.39	26.45	-6373.34	1.56	
14822.00	89.970	274.200	7304.60	6463.26	31.27	-6463.20	2.71	
14910.00	90.030	275.220	7304.60	6550.99	38.50	-6550.90	1.16	
15002.00	91.050	273.840	7303.73	6642.71	45.77	-6642.61	1.87	
15092.00	91.050	272.660	7302.08	6732.56	50.87	-6732.45	1.31	
15181.00	91.200	267.200	7300.34	6821.51	50.76	-6821.40	6.14	
15271.00	89.690	266.590	7299.64	6911.36	45.88	-6911.26	1.81	
15360.00	88.950	269.240	7300.69	7000.28	42.65	-7000.19	3.09	
15450.00	88.890	268.940	7302.39	7090.25	41.22	-7090.16	0.34	
15539.00	88.920	268.610	7304.09	7179.20	39.31	-7179.12	0.37	
15629.00	88.950	267.570	7305.76	7269.13	36.32	-7269.05	1.16	
15719.00	90.220	268.910	7306.42	7359.07	33.55	-7359.01	2.05	
15808.00	90.180	270.990	7306.10	7448.06	33.47	-7448.00	2.34	
15897.00	90.250	271.780	7305.77	7537.04	35.62	-7536.97	0.89	



Actual Wellpath Report

FALKEN 9C-9-L AWP
Page 8 of 11



REFERENCE WELLPATH IDENTIFICATION

Operator	SRC ENERGY	Slot	SLOT#04 FALKEN 9C-9-L (1859'FSL & 276'FEL, SEC.11)
Area	COLORADO	Well	FALKEN 9C-9-L
Field	WELD COUNTY (NAD83,TRUE NORTH)	Wellbore	FALKEN 9C-9-L AWP
Facility	SEC.11-T06N-R66W		

WELLPATH DATA (217 stations)

MD [ft]	Inclination [°]	Azimuth [°]	TVD [ft]	Vert Sect [ft]	North [ft]	East [ft]	DLS [°/100ft]	Comments
15987.00	90.280	272.500	7305.35	7626.99	38.99	-7626.91	0.80	
16076.00	90.120	272.470	7305.04	7715.91	42.84	-7715.82	0.18	
16166.00	90.120	271.820	7304.85	7805.86	46.21	-7805.76	0.72	
16255.00	90.220	270.220	7304.59	7894.85	47.80	-7894.74	1.80	
16345.00	90.310	269.470	7304.17	7984.84	47.55	-7984.74	0.84	
16434.00	90.250	268.540	7303.74	8073.82	46.01	-8073.73	1.05	
16524.00	90.280	266.510	7303.32	8163.72	42.12	-8163.64	2.26	
16613.00	90.060	264.790	7303.06	8252.44	35.37	-8252.38	1.95	
16703.00	90.120	262.700	7302.92	8341.87	25.57	-8341.84	2.32	
16792.00	90.280	263.410	7302.61	8430.19	14.80	-8430.18	0.82	
16882.00	90.030	270.000	7302.36	8519.98	9.63	-8519.98	7.33	
16971.00	90.460	268.780	7301.98	8608.97	8.69	-8608.97	1.45	
17061.00	90.430	268.140	7301.28	8698.92	6.27	-8698.94	0.71	
17150.00	90.370	268.410	7300.66	8787.87	3.59	-8787.90	0.31	
17240.00	90.310	268.190	7300.13	8877.82	0.92	-8877.86	0.25	
17329.00	88.830	268.280	7300.80	8966.77	-1.82	-8966.81	1.67	
17418.00	88.950	268.640	7302.52	9055.71	-4.21	-9055.76	0.43	
17508.00	88.950	269.540	7304.17	9145.68	-5.64	-9145.73	1.00	
17597.00	88.980	269.310	7305.78	9234.66	-6.53	-9234.71	0.26	
17687.00	90.060	268.740	7306.53	9324.64	-8.07	-9324.69	1.36	
17776.00	90.060	268.830	7306.44	9413.61	-9.95	-9413.67	0.10	
17866.00	90.090	268.350	7306.32	9503.58	-12.17	-9503.65	0.53	
17956.00	90.860	268.100	7305.57	9593.52	-14.96	-9593.60	0.90	
18045.00	90.990	267.900	7304.14	9682.45	-18.06	-9682.53	0.27	
18134.00	91.050	269.920	7302.55	9771.41	-19.75	-9771.50	2.27	
18224.00	91.110	269.300	7300.86	9861.39	-20.37	-9861.48	0.69	
18313.00	91.660	268.880	7298.71	9950.34	-21.78	-9950.44	0.78	
18403.00	91.510	270.600	7296.22	10040.30	-22.19	-10040.40	1.92	
18493.00	91.600	274.960	7293.77	10130.16	-17.83	-10130.24	4.84	
18582.00	91.660	274.950	7291.24	10218.81	-10.14	-10218.88	0.07	



Actual Wellpath Report

FALKEN 9C-9-L AWP

Page 9 of 11



REFERENCE WELLPATH IDENTIFICATION

Operator	SRC ENERGY	Slot	SLOT#04 FALKEN 9C-9-L (1859'FSL & 276'FEL, SEC.11)
Area	COLORADO	Well	FALKEN 9C-9-L
Field	WELD COUNTY (NAD83,TRUE NORTH)	Wellbore	FALKEN 9C-9-L AWB
Facility	SEC.11-T06N-R66W		

WELLPATH DATA (217 stations)

MD [ft]	Inclination [°]	Azimuth [°]	TVD [ft]	Vert Sect [ft]	North [ft]	East [ft]	DLS [°/100ft]	Comments
18672.00	91.570	274.740	7288.70	10308.47	-2.54	-10308.52	0.25	
18761.00	91.630	274.640	7286.22	10397.16	4.73	-10397.19	0.13	
18851.00	91.540	273.000	7283.73	10486.94	10.72	-10486.95	1.82	
18940.00	89.880	271.240	7282.63	10575.87	14.02	-10575.87	2.72	
19029.00	89.970	270.830	7282.74	10664.86	15.62	-10664.86	0.47	
19096.00	89.820	270.210	7282.87	10731.86	16.23	-10731.86	0.95	LAST BHGE MWD SURVEY (1855'FSL & 274'FWL, SEC.09)
19120.00	89.820	270.210	7282.94	10755.86	16.32	-10755.86	0.00	PROJECTION TO BIT (1855'FSL & 250'FWL, SEC.09)

HOLE & CASING SECTIONS - Ref Wellbore: FALKEN 9C-9-L AWB Ref Wellpath: FALKEN 9C-9-L AWP

String/Diameter	Start MD [ft]	End MD [ft]	Interval [ft]	Start TVD [ft]	End TVD [ft]	Start N/S [ft]	Start E/W [ft]	End N/S [ft]	End E/W [ft]
13.5in Open Hole	25.00	1808.00	1783.00	25.00	1807.77	0.00	0.00	8.15	24.27
9.625in Casing Surface	25.00	1808.00	1783.00	25.00	1807.77	0.00	0.00	8.15	24.27
8.5in Open Hole	1808.00	19120.00	17312.00	1807.77	7282.94	8.15	24.27	16.32	-10755.86



Actual Wellpath Report

FALKEN 9C-9-L AWP

Page 10 of 11



REFERENCE WELLPATH IDENTIFICATION

Operator	SRC ENERGY	Slot	SLOT#04 FALKEN 9C-9-L (1859'FSL & 276'FEL, SEC.11)
Area	COLORADO	Well	FALKEN 9C-9-L
Field	WELD COUNTY (NAD83,TRUE NORTH)	Wellbore	FALKEN 9C-9-L AWB
Facility	SEC.11-T06N-R66W		

TARGETS

Name	TVD [ft]	North [ft]	East [ft]	Grid East [US ft]	Grid North [US ft]	Latitude	Longitude	Shape
SEC.10-T6N-R66W	0.00	44.81	0.28	3212478.20	1426196.25	40°30'02.869"N	104°44'09.402"W	polygon
SEC.11-T6N-R66W SOUTHERN HALF	0.00	44.81	0.28	3212478.20	1426196.25	40°30'02.869"N	104°44'09.402"W	polygon
SEC.14-T6N-R66W NORTHERN HALF	0.00	44.81	0.28	3212478.20	1426196.25	40°30'02.869"N	104°44'09.402"W	polygon
SEC.9-T6N-R66W EAST QUARTER	0.00	44.81	0.28	3212478.20	1426196.25	40°30'02.869"N	104°44'09.402"W	polygon
FALKEN 9C-9-L TOP OF PROD ON PLAT (1843'FSL, & 300'FWL, SEC.12)	7241.00	-16.02	575.68	3213054.09	1426140.38	40°30'02.268"N	104°44'01.954"W	circle
FALKEN 9C-9-L BHL ON PLAT (1868'FSL & 300'FWL, SEC.09)	7261.00	29.65	-10706.26	3201772.58	1426088.84	40°30'02.696"N	104°46'27.995"W	circle
FALKEN 9C-9-L TOP OF PROD REV-2 (1843.FSL & 300'FWL, SEC.12)	7262.48	-16.03	575.68	3213054.09	1426140.37	40°30'02.268"N	104°44'01.954"W	point
FALKEN 9C-9-L BHL REV-2 (1868'FSL & 300'FWL, SEC.12)	7269.32	29.65	-10706.26	3201772.58	1426088.84	40°30'02.696"N	104°46'27.995"W	point

WELLPATH COMPOSITION - Ref Wellbore: FALKEN 9C-9-L AWB Ref Wellpath: FALKEN 9C-9-L AWP

Start MD [ft]	End MD [ft]	Positional Uncertainty Model	Log Name/Comment	Wellbore
25.00	1768.00	Custom BHI NaviTrak (Standard Rotating+Axial Corr) (Rockies 0.03Gt model)	13 1/2" APS EM SURVEYS <153-1768>	FALKEN 9C-9-L AWB
1768.00	19096.00	Custom BHI AutoTrak Curve (IFR1, Short) (Rockies 0.03Gt model)	8 1/2" BHI ATC (IFR,SHORT,MSA) (ROCKIES GT 0.03 MODEL) <1882' - 19096>	FALKEN 9C-9-L AWB
19096.00	19120.00	Blind Drilling (std)	Projection to bit	FALKEN 9C-9-L AWB



Actual Wellpath Report

FALKEN 9C-9-L AWP

Page 11 of 11



REFERENCE WELLPATH IDENTIFICATION

Operator	SRC ENERGY	Slot	SLOT#04 FALKEN 9C-9-L (1859'FSL & 276'FWL, SEC.11)
Area	COLORADO	Well	FALKEN 9C-9-L
Field	WELD COUNTY (NAD83,TRUE NORTH)	Wellbore	FALKEN 9C-9-L AWB
Facility	SEC.11-T06N-R66W		

WELLPATH COMMENTS

MD [ft]	Inclination [°]	Azimuth [°]	TVD [ft]	Comment
7788.00	89.260	268.640	7257.10	LANDING POINT (1827'FSL & 274'FWL, SEC.12)
19096.00	89.820	270.210	7282.87	LAST BHGE MWD SURVEY (1855'FSL & 274'FWL, SEC.09)
19120.00	89.820	270.210	7282.94	PROJECTION TO BIT (1855'FSL & 250'FWL, SEC.09)