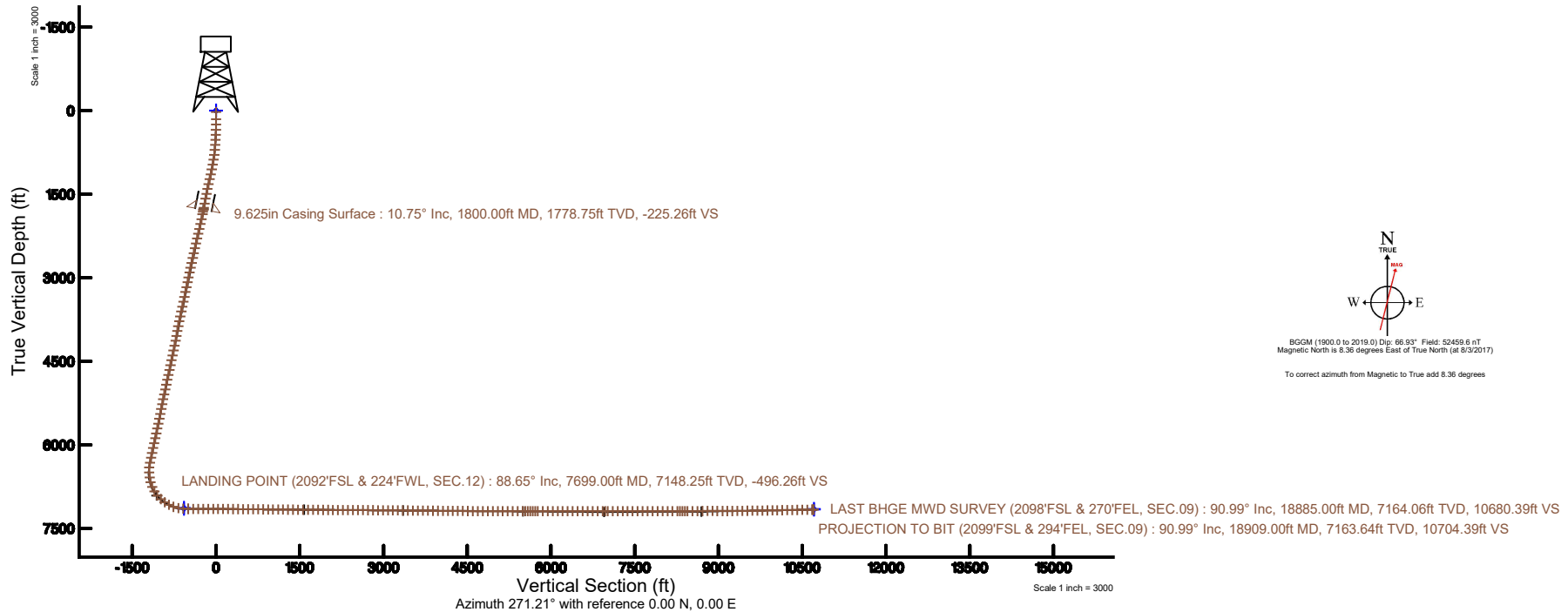
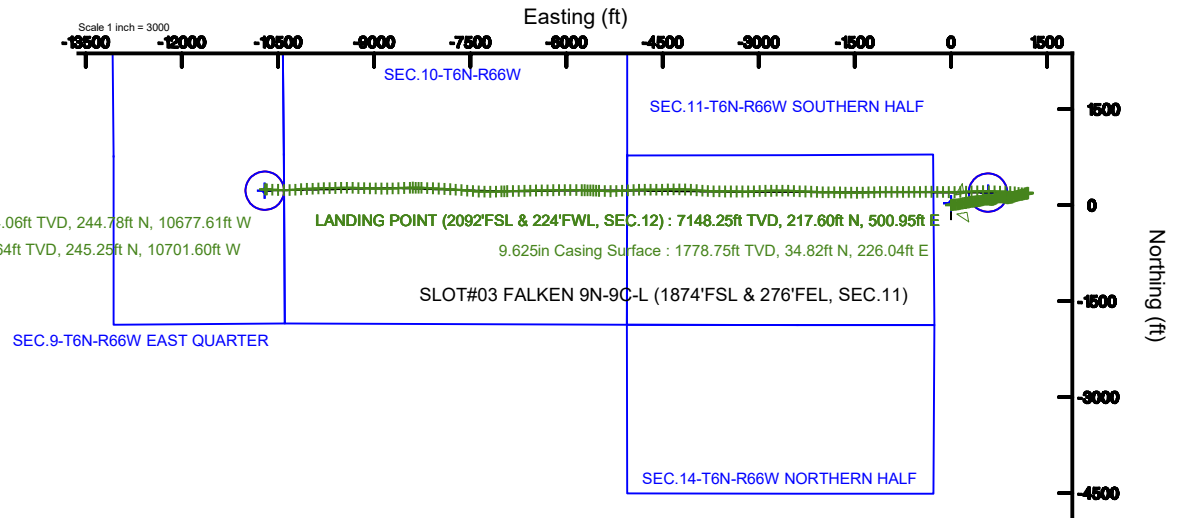


# SRC ENERGY

Location: COLORADO Slot: SLOT#03 FALKEN 9N-9C-L (1874°FSL & 276°FEL, SEC.11)  
Field: WELD COUNTY (NAD83,TRUE NORTH) Well: FALKEN 9N-9C-L  
Facility: SEC.11-T06N-R66W Wellbore: FALKEN 9N-9C-L PWB

Plot reference wellpath is FALKEN 9N-9C-L (REV-B.0) PWP	Grid System: NAD83 / Lambert Colorado SP, Northern Zone (501), US feet
True vertical depths are referenced to PRECISION 562 (25) (RKB)	* = Wellpath was transformed from a different geodetic datum
Measured depths are referenced to PRECISION 562 (25) (RKB)	North Reference: True north
PRECISION 562 (25) (RKB) to Mean Sea Level: 4835 feet	Scale: True distance
Mean Sea Level to Mud line (At Slot: SLOT#03 FALKEN 9N-9C-L (1874°FSL & 276°FEL, SEC.11)): 0 feet	Depths are in feet
Coordinates are in feet referenced to Slot	Created by: doddanna on 2018-02-06
	Database: WellArchitectDB





# Actual Wellpath Report

FALKEN 9N-9C-L AWP  
Page 1 of 11



## REFERENCE WELLPATH IDENTIFICATION

Operator	SRC ENERGY	Slot	SLOT#03 FALKEN 9N-9C-L (1874'FSL & 276'FEL, SEC.11)
Area	COLORADO	Well	FALKEN 9N-9C-L
Field	WELD COUNTY (NAD83,TRUE NORTH)	Wellbore	FALKEN 9N-9C-L AWP
Facility	SEC.11-T06N-R66W		

## REPORT SETUP INFORMATION

Projection System	NAD83 / Lambert Colorado SP, Northern Zone (501), US feet	Software System	WellArchitect® 5.0
North Reference	True	User	Doddanna
Scale	0.999966	Report Generated	2/6/2018 at 11:37:47 AM
Convergence at slot	0.49° East	Database/Source file	WellArchitectDB\FALKEN_9N-9C-L_AWP.xml

## WELLPATH LOCATION

	Local coordinates		Grid coordinates		Geographic coordinates	
	North[ft]	East[ft]	Easting[US ft]	Northing[US ft]	Latitude	Longitude
Slot Location	-29.87	-0.28	3212478.18	1426166.37	40°30'02.574"N	104°44'09.406"W
Facility Reference Pt			3212478.20	1426196.25	40°30'02.869"N	104°44'09.402"W
Field Reference Pt			3171284.48	1426358.81	40°30'07.643"N	104°53'02.634"W

## WELLPATH DATUM

Calculation method	Minimum curvature	PRECISION 562 (25') (RKB) to Facility Vertical Datum	4835.00ft
Horizontal Reference Pt	Slot	PRECISION 562 (25') (RKB) to Mean Sea Level	4835.00ft
Vertical Reference Pt	PRECISION 562 (25') (RKB)	PRECISION 562 (25') (RKB) to Mud Line at Slot (SLOT#03 FALKEN 9N-9C-L (1874'FSL & 276'FEL, SEC.11))	4835.00ft
MD Reference Pt	PRECISION 562 (25') (RKB)	Section Origin	N 0.00, E 0.00 ft
Field Vertical Reference	Mean Sea Level	Section Azimuth	271.21°



SRC ENERGY

# Actual Wellpath Report

FALKEN 9N-9C-L AWP

Page 2 of 11



**BAKER  
HUGHES**

## REFERENCE WELLPATH IDENTIFICATION

Operator	SRC ENERGY	Slot	SLOT#03 FALKEN 9N-9C-L (1874'FSL & 276'FEL, SEC.11)
Area	COLORADO	Well	FALKEN 9N-9C-L
Field	WELD COUNTY (NAD83,TRUE NORTH)	Wellbore	FALKEN 9N-9C-L AWB
Facility	SEC.11-T06N-R66W		

## WELLPATH DATA (220 stations) † = interpolated/extrapolated station

MD [ft]	Inclination [°]	Azimuth [°]	TVD [ft]	Vert Sect [ft]	North [ft]	East [ft]	DLS [°/100ft]	Comments
0.00†	0.000	301.180	0.00	0.00	0.00	0.00	0.00	
25.00	0.000	301.180	25.00	0.00	0.00	0.00	0.00	
153.00	0.600	301.180	153.00	0.58	0.35	-0.57	0.47	
247.00	0.640	54.570	246.99	0.59	0.91	-0.57	1.10	
342.00	0.570	81.610	341.99	-0.31	1.28	0.33	0.31	
436.00	2.560	73.280	435.95	-2.76	1.95	2.81	2.13	
526.00	4.010	76.320	525.80	-7.72	3.28	7.79	1.62	
614.00	3.900	76.740	613.59	-13.59	4.69	13.69	0.13	
704.00	5.390	81.190	703.29	-20.72	6.04	20.85	1.70	
793.00	6.840	83.830	791.78	-30.09	7.25	30.25	1.66	
883.00	8.800	89.400	880.94	-42.29	7.90	42.46	2.33	
972.00	10.720	89.710	968.65	-57.37	8.01	57.55	2.16	
1061.00	12.370	87.200	1055.85	-75.15	8.52	75.35	1.94	
1151.00	13.100	82.430	1143.64	-94.85	10.33	95.09	1.42	
1240.00	13.210	81.040	1230.30	-114.83	13.25	115.13	0.38	
1330.00	12.120	78.950	1318.11	-134.18	16.66	134.56	1.31	
1419.00	11.550	77.180	1405.22	-151.96	20.43	152.42	0.76	
1509.00	11.600	77.050	1493.39	-169.47	24.45	170.03	0.06	
1598.00	11.340	77.880	1580.61	-186.66	28.30	187.30	0.35	
1688.00	11.400	80.780	1668.84	-204.02	31.58	204.73	0.64	
1764.00	11.000	82.090	1743.40	-218.57	33.78	219.33	0.62	
1838.00	10.500	78.270	1816.10	-232.11	36.12	232.92	1.18	
1882.00	11.340	80.740	1859.30	-240.27	37.63	241.12	2.18	
1972.00	12.760	81.750	1947.32	-258.78	40.49	259.69	1.60	
2061.00	12.900	78.760	2034.10	-278.17	43.83	279.16	0.76	
2151.00	13.030	78.240	2121.80	-297.87	47.86	298.95	0.19	
2240.00	12.860	84.400	2208.54	-317.48	50.87	318.63	1.56	
2329.00	12.800	83.050	2295.32	-337.08	53.03	338.27	0.34	
2419.00	12.960	82.010	2383.06	-356.91	55.64	358.16	0.31	
2508.00	12.890	81.450	2469.80	-376.54	58.50	377.86	0.16	



SRC ENERGY

## Actual Wellpath Report

FALKEN 9N-9C-L AWP

Page 3 of 11

**BAKER  
HUGHES**

## REFERENCE WELLPATH IDENTIFICATION

Operator	SRC ENERGY	Slot	SLOT#03 FALKEN 9N-9C-L (1874'FSL & 276'FEL, SEC.11)
Area	COLORADO	Well	FALKEN 9N-9C-L
Field	WELD COUNTY (NAD83,TRUE NORTH)	Wellbore	FALKEN 9N-9C-L AWB
Facility	SEC.11-T06N-R66W		

## WELLPATH DATA (220 stations)

MD [ft]	Inclination [°]	Azimuth [°]	TVD [ft]	Vert Sect [ft]	North [ft]	East [ft]	DLS [°/100ft]	Comments
2598.00	12.360	86.470	2557.63	-396.04	60.59	397.40	1.35	
2687.00	12.880	88.040	2644.48	-415.43	61.51	416.82	0.70	
2777.00	13.010	84.210	2732.19	-435.51	62.88	436.93	0.96	
2866.00	12.970	78.450	2818.92	-455.19	65.89	456.68	1.45	
2956.00	12.070	69.960	2906.79	-473.81	71.14	475.42	2.27	
3045.00	11.970	72.220	2993.84	-491.21	77.14	492.95	0.54	
3134.00	12.120	80.610	3080.88	-509.13	81.49	510.96	1.97	
3224.00	12.090	81.990	3168.88	-527.72	84.34	529.61	0.32	
3313.00	12.070	83.590	3255.91	-546.14	86.68	548.09	0.38	
3403.00	11.980	93.170	3343.94	-564.80	87.21	566.77	2.22	
3492.00	12.050	95.600	3431.00	-583.30	85.79	585.24	0.57	
3582.00	12.110	99.850	3519.00	-602.00	83.26	603.89	0.99	
3671.00	12.060	96.950	3606.03	-620.48	80.54	622.31	0.68	
3761.00	12.050	88.710	3694.05	-639.22	79.61	641.04	1.91	
3850.00	12.450	76.560	3781.04	-657.79	82.05	659.66	2.93	
3940.00	12.040	59.590	3869.02	-675.17	89.06	677.20	4.01	
4029.00	11.920	59.100	3956.09	-690.86	98.48	693.09	0.18	
4119.00	11.980	61.190	4044.14	-706.82	107.76	709.25	0.49	
4208.00	11.940	67.830	4131.21	-723.27	115.68	725.87	1.55	
4298.00	11.850	79.040	4219.29	-740.85	120.95	743.57	2.57	
4387.00	12.170	89.120	4306.35	-759.16	122.83	761.92	2.38	
4477.00	11.860	92.210	4394.38	-777.89	122.62	780.65	0.79	
4566.00	12.230	97.790	4481.42	-796.40	120.99	799.13	1.37	
4656.00	11.960	99.850	4569.42	-815.09	118.11	817.76	0.57	
4745.00	12.190	99.760	4656.45	-833.50	114.93	836.11	0.26	
4835.00	12.000	101.010	4744.46	-852.12	111.54	854.66	0.36	
4924.00	12.340	95.110	4831.46	-870.72	108.92	873.21	1.45	
5014.00	12.130	86.500	4919.42	-889.74	108.64	892.23	2.04	
5103.00	12.330	85.320	5006.40	-908.51	109.99	911.03	0.36	
5193.00	12.540	78.860	5094.30	-927.62	112.66	930.20	1.56	



SRC ENERGY

## Actual Wellpath Report

FALKEN 9N-9C-L AWP

Page 4 of 11



## REFERENCE WELLPATH IDENTIFICATION

Operator	SRC ENERGY	Slot	SLOT#03 FALKEN 9N-9C-L (1874'FSL & 276'FEL, SEC.11)
Area	COLORADO	Well	FALKEN 9N-9C-L
Field	WELD COUNTY (NAD83,TRUE NORTH)	Wellbore	FALKEN 9N-9C-L AWB
Facility	SEC.11-T06N-R66W		

## WELLPATH DATA (220 stations)

MD [ft]	Inclination [°]	Azimuth [°]	TVD [ft]	Vert Sect [ft]	North [ft]	East [ft]	DLS [°/100ft]	Comments
5282.00	11.830	70.220	5181.30	-945.58	117.62	948.26	2.20	
5372.00	11.480	70.030	5269.44	-962.54	123.80	965.36	0.39	
5461.00	11.900	71.200	5356.60	-979.42	129.78	982.37	0.54	
5551.00	11.890	72.490	5444.66	-996.92	135.56	1000.00	0.30	
5640.00	11.490	75.950	5531.82	-1014.16	140.47	1017.34	0.91	
5730.00	12.880	74.050	5619.79	-1032.39	145.40	1035.68	1.61	
5819.00	12.070	70.980	5706.69	-1050.60	151.16	1054.02	1.18	
5909.00	12.740	76.580	5794.59	-1069.03	156.53	1072.57	1.53	
5999.00	12.120	81.130	5882.48	-1087.94	160.29	1091.56	1.29	
6088.00	12.610	82.270	5969.42	-1106.73	163.04	1110.42	0.62	
6178.00	12.520	78.400	6057.26	-1125.95	166.32	1129.71	0.94	
6267.00	12.200	76.570	6144.20	-1144.46	170.45	1148.30	0.57	
6356.00	11.860	78.440	6231.25	-1162.48	174.46	1166.41	0.58	
6446.00	12.420	85.310	6319.24	-1181.12	177.11	1185.12	1.72	
6535.00	8.010	57.630	6406.86	-1195.83	181.21	1199.91	7.28	
6625.00	7.950	326.460	6496.28	-1197.51	189.79	1201.77	12.65	
6715.00	7.800	258.120	6585.61	-1187.99	193.73	1192.34	9.81	
6804.00	14.280	258.050	6672.91	-1171.41	190.21	1175.67	7.28	
6894.00	23.450	266.790	6758.00	-1142.68	186.90	1146.87	10.63	
6983.00	31.510	273.470	6836.92	-1101.70	187.31	1105.90	9.68	
7072.00	40.090	276.380	6909.04	-1049.82	191.91	1054.10	9.83	
7162.00	46.940	277.500	6974.27	-988.21	199.44	992.63	7.66	
7251.00	54.860	273.200	7030.37	-919.39	205.72	923.93	9.65	
7341.00	62.160	271.860	7077.35	-842.72	209.07	847.31	8.21	
7430.00	70.080	271.940	7113.35	-761.41	211.77	766.04	8.90	
7520.00	79.500	270.650	7136.94	-674.66	213.71	679.31	10.56	
7609.00	88.640	271.590	7146.12	-586.23	215.44	590.90	10.32	
7699.00	88.650	271.160	7148.25	-496.26	217.60	500.95	0.48	LANDING POINT (2092'FSL & 224'FWL, SEC.12)
7788.00	89.570	267.510	7149.63	-407.33	216.57	411.99	4.23	
7878.00	89.510	268.070	7150.36	-317.50	213.10	322.06	0.63	



SRC ENERGY

# Actual Wellpath Report

FALKEN 9N-9C-L AWP

Page 5 of 11



**BAKER  
HUGHES**

## REFERENCE WELLPATH IDENTIFICATION

Operator	SRC ENERGY	Slot	SLOT#03 FALKEN 9N-9C-L (1874'FSL & 276'FEL, SEC.11)
Area	COLORADO	Well	FALKEN 9N-9C-L
Field	WELD COUNTY (NAD83,TRUE NORTH)	Wellbore	FALKEN 9N-9C-L AWB
Facility	SEC.11-T06N-R66W		

## WELLPATH DATA (220 stations)

MD [ft]	Inclination [°]	Azimuth [°]	TVD [ft]	Vert Sect [ft]	North [ft]	East [ft]	DLS [°/100ft]	Comments
7967.00	89.720	267.630	7150.95	-228.65	209.76	233.12	0.55	
8056.00	89.660	267.650	7151.44	-139.82	206.10	144.20	0.07	
8146.00	89.780	269.070	7151.88	-49.94	203.52	54.24	1.58	
8235.00	89.880	271.300	7152.14	39.04	203.81	-34.75	2.51	
8325.00	89.820	271.480	7152.38	129.04	205.99	-124.73	0.21	
8414.00	89.660	270.410	7152.78	218.04	207.46	-213.71	1.22	
8504.00	89.600	270.470	7153.36	308.03	208.15	-303.71	0.09	
8593.00	89.410	269.200	7154.13	397.00	207.89	-392.70	1.44	
8683.00	89.380	269.120	7155.08	486.93	206.57	-482.69	0.09	
8772.00	89.410	270.220	7156.02	575.90	206.06	-571.68	1.24	
8861.00	89.260	270.170	7157.05	664.88	206.36	-660.67	0.18	
8951.00	89.510	270.120	7158.02	754.85	206.59	-750.67	0.28	
9040.00	89.450	270.210	7158.83	843.84	206.85	-839.66	0.12	
9130.00	89.450	270.140	7159.69	933.82	207.12	-929.66	0.08	
9219.00	89.380	269.430	7160.60	1022.78	206.79	-1018.65	0.80	
9309.00	89.320	268.490	7161.62	1112.71	205.16	-1108.63	1.05	
9398.00	89.480	268.050	7162.55	1201.59	202.47	-1197.59	0.53	
9488.00	89.570	267.780	7163.30	1291.43	199.19	-1287.52	0.32	
9578.00	89.480	267.720	7164.04	1381.27	195.66	-1377.45	0.12	
9667.00	89.480	269.880	7164.85	1470.18	193.80	-1466.42	2.43	
9756.00	89.690	271.120	7165.50	1559.17	194.57	-1555.42	1.41	
9846.00	89.450	271.330	7166.17	1649.17	196.50	-1645.39	0.35	
9935.00	89.570	270.770	7166.93	1738.16	198.13	-1734.37	0.64	
10025.00	89.570	270.520	7167.61	1828.16	199.14	-1824.37	0.28	
10115.00	89.380	270.410	7168.43	1918.14	199.87	-1914.36	0.24	
10204.00	89.540	271.960	7169.27	2007.14	201.71	-2003.33	1.75	
10293.00	89.690	272.870	7169.87	2096.12	205.46	-2092.25	1.04	
10383.00	89.690	272.250	7170.36	2186.09	209.48	-2182.16	0.69	
10472.00	89.540	272.440	7170.95	2275.07	213.12	-2271.08	0.27	
10562.00	89.630	272.740	7171.61	2365.04	217.19	-2360.99	0.35	



SRC ENERGY

# Actual Wellpath Report

FALKEN 9N-9C-L AWP

Page 6 of 11

**BAKER  
HUGHES**

## REFERENCE WELLPATH IDENTIFICATION

Operator	SRC ENERGY	Slot	SLOT#03 FALKEN 9N-9C-L (1874'FSL & 276'FEL, SEC.11)
Area	COLORADO	Well	FALKEN 9N-9C-L
Field	WELD COUNTY (NAD83,TRUE NORTH)	Wellbore	FALKEN 9N-9C-L AWB
Facility	SEC.11-T06N-R66W		

## WELLPATH DATA (220 stations)

MD [ft]	Inclination [°]	Azimuth [°]	TVD [ft]	Vert Sect [ft]	North [ft]	East [ft]	DLS [°/100ft]	Comments
10651.00	89.720	272.320	7172.11	2454.01	221.12	-2449.90	0.48	
10741.00	89.720	271.610	7172.55	2544.01	224.21	-2539.85	0.79	
10830.00	89.630	269.880	7173.06	2633.00	225.36	-2628.83	1.95	
10920.00	89.720	269.360	7173.57	2722.96	224.77	-2718.83	0.59	
11009.00	89.420	269.600	7174.23	2811.92	223.96	-2807.82	0.43	
11099.00	89.320	268.840	7175.22	2901.86	222.73	-2897.81	0.85	
11188.00	89.570	267.490	7176.09	2990.73	219.88	-2986.76	1.54	
11278.00	89.600	267.260	7176.74	3080.52	215.76	-3076.66	0.26	
11367.00	89.600	269.400	7177.36	3169.40	213.17	-3165.61	2.40	
11457.00	89.600	270.360	7177.99	3259.38	212.98	-3255.61	1.07	
11546.00	89.570	270.080	7178.63	3348.36	213.32	-3344.61	0.32	
11635.00	89.260	269.980	7179.54	3437.34	213.37	-3433.60	0.37	
11725.00	89.630	270.760	7180.41	3527.32	213.95	-3523.60	0.96	
11814.00	89.570	271.170	7181.03	3616.32	215.45	-3612.58	0.47	
11904.00	89.600	271.480	7181.69	3706.32	217.53	-3702.55	0.35	
11994.00	89.480	272.950	7182.41	3796.30	221.01	-3792.48	1.64	
12083.00	89.450	274.220	7183.24	3885.21	226.57	-3881.30	1.43	
12173.00	89.570	273.890	7184.01	3975.10	232.94	-3971.07	0.39	
12262.00	89.510	273.970	7184.72	4064.00	239.04	-4059.86	0.11	
12352.00	89.410	271.790	7185.57	4153.95	243.56	-4149.74	2.42	
12441.00	89.510	269.850	7186.41	4242.94	244.83	-4238.72	2.18	
12531.00	89.450	269.930	7187.23	4332.91	244.66	-4328.72	0.11	
12620.00	89.380	268.830	7188.14	4421.86	243.70	-4417.71	1.24	
12710.00	89.600	268.870	7188.94	4511.78	241.89	-4507.68	0.25	
12799.00	89.510	269.110	7189.63	4600.71	240.32	-4596.67	0.29	
12889.00	89.600	269.440	7190.33	4690.66	239.18	-4686.66	0.38	
12978.00	89.200	271.400	7191.26	4779.64	239.83	-4775.65	2.25	
13068.00	89.660	268.790	7192.16	4869.61	239.98	-4865.63	2.94	
13157.00	90.250	265.890	7192.23	4958.40	235.85	-4954.53	3.33	
13247.00	90.030	266.470	7192.01	5048.05	229.86	-5044.33	0.69	



SRC ENERGY

# Actual Wellpath Report

FALKEN 9N-9C-L AWP

Page 7 of 11

**BAKER  
HUGHES****REFERENCE WELLPATH IDENTIFICATION**

Operator	SRC ENERGY	Slot	SLOT#03 FALKEN 9N-9C-L (1874'FSL & 276'FEL, SEC.11)
Area	COLORADO	Well	FALKEN 9N-9C-L
Field	WELD COUNTY (NAD83,TRUE NORTH)	Wellbore	FALKEN 9N-9C-L AWB
Facility	SEC.11-T06N-R66W		

**WELLPATH DATA (220 stations)**

MD [ft]	Inclination [°]	Azimuth [°]	TVD [ft]	Vert Sect [ft]	North [ft]	East [ft]	DLS [°/100ft]	Comments
13336.00	90.030	266.960	7191.96	5136.78	224.76	-5133.18	0.55	
13426.00	89.910	267.400	7192.01	5226.55	220.33	-5223.07	0.51	
13516.00	90.060	269.910	7192.03	5316.46	218.22	-5313.04	2.79	
13605.00	90.090	272.110	7191.91	5405.45	219.79	-5402.02	2.47	
13695.00	90.120	272.590	7191.75	5495.43	223.48	-5491.94	0.53	
13739.00	89.910	272.810	7191.74	5539.42	225.55	-5535.89	0.69	
13784.00	90.090	272.610	7191.74	5584.40	227.68	-5580.84	0.60	
13829.00	89.970	272.790	7191.71	5629.39	229.80	-5625.79	0.48	
13873.00	89.940	271.850	7191.75	5673.38	231.58	-5669.76	2.14	
13918.00	89.850	271.310	7191.83	5718.38	232.82	-5714.74	1.22	
13963.00	90.090	271.270	7191.85	5763.38	233.83	-5759.73	0.54	
14052.00	89.880	270.750	7191.88	5852.38	235.40	-5848.71	0.63	
14142.00	90.060	270.390	7191.92	5942.37	236.30	-5938.71	0.45	
14231.00	90.030	269.450	7191.85	6031.35	236.17	-6027.71	1.06	
14321.00	89.850	268.710	7191.95	6121.28	234.73	-6117.70	0.85	
14410.00	90.000	268.730	7192.07	6210.20	232.74	-6206.67	0.17	
14500.00	89.850	269.470	7192.18	6300.14	231.32	-6296.66	0.84	
14589.00	90.090	269.530	7192.23	6389.10	230.55	-6385.66	0.28	
14679.00	89.970	268.120	7192.18	6479.02	228.70	-6475.64	1.57	
14768.00	89.970	268.120	7192.23	6567.89	225.78	-6564.59	0.00	
14858.00	90.030	269.120	7192.23	6657.80	223.61	-6654.56	1.11	
14948.00	89.970	268.910	7192.23	6747.73	222.07	-6744.55	0.24	
15037.00	89.880	268.910	7192.35	6836.66	220.37	-6833.53	0.10	
15127.00	89.970	267.870	7192.46	6926.55	217.85	-6923.50	1.16	
15171.00	90.090	267.850	7192.44	6970.47	216.20	-6967.47	0.28	
15216.00	90.060	268.250	7192.38	7015.41	214.67	-7012.44	0.89	
15305.00	89.940	267.640	7192.38	7104.26	211.48	-7101.38	0.70	
15395.00	89.970	269.170	7192.45	7194.15	208.98	-7191.34	1.70	
15485.00	90.120	271.190	7192.38	7284.13	209.26	-7281.34	2.25	
15574.00	90.060	273.600	7192.24	7373.11	212.98	-7370.25	2.71	





SRC ENERGY

# Actual Wellpath Report

FALKEN 9N-9C-L AWP

Page 8 of 11



**BAKER  
HUGHES**

## REFERENCE WELLPATH IDENTIFICATION

Operator	SRC ENERGY	Slot	SLOT#03 FALKEN 9N-9C-L (1874'FSL & 276'FEL, SEC.11)
Area	COLORADO	Well	FALKEN 9N-9C-L
Field	WELD COUNTY (NAD83,TRUE NORTH)	Wellbore	FALKEN 9N-9C-L AWB
Facility	SEC.11-T06N-R66W		

## WELLPATH DATA (220 stations)

MD [ft]	Inclination [°]	Azimuth [°]	TVD [ft]	Vert Sect [ft]	North [ft]	East [ft]	DLS [°/100ft]	Comments
15663.00	89.940	274.740	7192.24	7461.98	219.45	-7459.02	1.29	
15753.00	90.000	274.650	7192.29	7551.82	226.82	-7548.72	0.12	
15842.00	90.000	275.110	7192.29	7640.64	234.39	-7637.39	0.52	
15932.00	90.250	274.030	7192.09	7730.48	241.56	-7727.10	1.23	
16021.00	90.400	274.010	7191.59	7819.37	247.80	-7815.88	0.17	
16111.00	90.280	273.000	7191.05	7909.29	253.30	-7905.71	1.13	
16200.00	90.340	273.400	7190.57	7998.24	258.27	-7994.57	0.45	
16290.00	90.120	272.970	7190.21	8088.18	263.27	-8084.43	0.54	
16379.00	90.000	271.740	7190.12	8177.17	266.92	-8173.36	1.39	
16469.00	89.940	271.590	7190.16	8267.16	269.54	-8263.32	0.18	
16513.00	89.940	271.280	7190.21	8311.16	270.64	-8307.30	0.70	
16558.00	90.310	271.680	7190.11	8356.16	271.80	-8352.29	1.21	
16603.00	90.000	270.710	7189.99	8401.16	272.74	-8397.28	2.26	
16648.00	90.000	268.800	7189.99	8446.14	272.55	-8442.28	4.24	
16737.00	90.090	266.230	7189.92	8534.95	268.69	-8531.18	2.89	
16827.00	90.000	267.090	7189.85	8624.67	263.45	-8621.03	0.96	
16916.00	91.170	268.070	7188.94	8713.48	259.69	-8709.94	1.71	
17005.00	90.000	269.810	7188.03	8802.40	258.04	-8798.92	2.36	
17095.00	89.850	270.660	7188.15	8892.39	258.41	-8888.92	0.96	
17184.00	89.970	271.590	7188.29	8981.39	260.16	-8977.90	1.05	
17274.00	89.940	271.450	7188.36	9071.39	262.55	-9067.87	0.16	
17363.00	89.970	271.610	7188.43	9160.38	264.92	-9156.84	0.18	
17453.00	90.030	271.530	7188.43	9250.38	267.39	-9246.80	0.11	
17542.00	90.990	271.020	7187.64	9339.38	269.37	-9335.77	1.22	
17632.00	90.980	270.210	7186.09	9429.36	270.34	-9425.76	0.90	
17721.00	90.990	268.570	7184.56	9518.30	269.39	-9514.73	1.84	
17811.00	91.050	269.190	7182.96	9608.21	267.63	-9604.70	0.69	
17900.00	90.920	268.680	7181.43	9697.13	265.98	-9693.67	0.59	
17990.00	91.080	268.550	7179.86	9787.02	263.80	-9783.63	0.23	
18079.00	91.050	267.710	7178.20	9875.88	260.90	-9872.57	0.94	



SRC ENERGY

## Actual Wellpath Report

FALKEN 9N-9C-L AWP

Page 9 of 11

BAKER  
HUGHES

## REFERENCE WELLPATH IDENTIFICATION

Operator	SRC ENERGY	Slot	SLOT#03 FALKEN 9N-9C-L (1874'FSL & 276'FEL, SEC.11)
Area	COLORADO	Well	FALKEN 9N-9C-L
Field	WELD COUNTY (NAD83,TRUE NORTH)	Wellbore	FALKEN 9N-9C-L AWB
Facility	SEC.11-T06N-R66W		

## WELLPATH DATA (220 stations)

MD [ft]	Inclination [°]	Azimuth [°]	TVD [ft]	Vert Sect [ft]	North [ft]	East [ft]	DLS [°/100ft]	Comments
18169.00	91.020	267.930	7176.58	9965.70	257.47	-9962.49	0.25	
18258.00	90.990	267.280	7175.02	10054.51	253.75	-10051.40	0.73	
18348.00	90.920	266.000	7173.52	10144.21	248.48	-10141.23	1.42	
18437.00	91.020	265.560	7172.01	10232.80	241.93	-10229.98	0.51	
18527.00	91.020	268.390	7170.41	10322.53	237.18	-10319.83	3.14	
18616.00	91.020	270.390	7168.82	10411.47	236.24	-10408.80	2.25	
18706.00	91.020	271.760	7167.22	10501.45	237.93	-10498.77	1.52	
18795.00	91.020	272.950	7165.64	10590.42	241.58	-10587.68	1.34	
18885.00	90.990	271.120	7164.06	10680.39	244.78	-10677.61	2.03	LAST BHGE MWD SURVEY (2098'FSL & 270'FEL, SEC.09)
18909.00	90.990	271.120	7163.64	10704.39	245.25	-10701.60	0.00	PROJECTION TO BIT (2099'FSL & 294'FEL, SEC.09)

## HOLE &amp; CASING SECTIONS - Ref Wellbore: FALKEN 9N-9C-L AWB Ref Wellpath: FALKEN 9N-9C-L AWP

String/Diameter	Start MD [ft]	End MD [ft]	Interval [ft]	Start TVD [ft]	End TVD [ft]	Start N/S [ft]	Start E/W [ft]	End N/S [ft]	End E/W [ft]
13.5in Open Hole	25.00	1800.00	1775.00	25.00	1778.75	0.00	0.00	34.82	226.04
9.625in Casing Surface	25.00	1800.00	1775.00	25.00	1778.75	0.00	0.00	34.82	226.04
8.5in Open Hole	1800.00	18909.00	17109.00	1778.75	7163.64	34.82	226.04	245.25	-10701.60



# Actual Wellpath Report

FALKEN 9N-9C-L AWP

Page 10 of 11



## REFERENCE WELLPATH IDENTIFICATION

Operator	SRC ENERGY	Slot	SLOT#03 FALKEN 9N-9C-L (1874'FSL & 276'FEL, SEC.11)
Area	COLORADO	Well	FALKEN 9N-9C-L
Field	WELD COUNTY (NAD83,TRUE NORTH)	Wellbore	FALKEN 9N-9C-L AWB
Facility	SEC.11-T06N-R66W		

## TARGETS

Name	TVD [ft]	North [ft]	East [ft]	Grid East [US ft]	Grid North [US ft]	Latitude	Longitude	Shape
SEC.10-T6N-R66W	0.00	29.87	0.28	3212478.20	1426196.25	40°30'02.869"N	104°44'09.402"W	polygon
SEC.11-T6N-R66W SOUTHERN HALF	0.00	29.87	0.28	3212478.20	1426196.25	40°30'02.869"N	104°44'09.402"W	polygon
SEC.14-T6N-R66W NORTHERN HALF	0.00	29.87	0.28	3212478.20	1426196.25	40°30'02.869"N	104°44'09.402"W	polygon
SEC.9-T6N-R66W EAST QUARTER	0.00	29.87	0.28	3212478.20	1426196.25	40°30'02.869"N	104°44'09.402"W	polygon
FALKEN 9N-9C-L TOP OF PROD ON PLAT (2070'FSL & 300'FWL, SEC.12)	7130.00	196.01	577.34	3213053.80	1426367.34	40°30'04.511"N	104°44'01.932"W	circle
FALKEN 9N-9C-L TOP OF PROD REV-2 (2070'FSL & 300'FWL, SEC.12)	7148.20	196.01	577.35	3213053.80	1426367.34	40°30'04.511"N	104°44'01.932"W	circle
FALKEN 9N-9C-L BHL ON PLAT (2079'FSL & 300'FEL, SEC.09)	7152.00	225.65	-10707.56	3201769.46	1426299.75	40°30'04.781"N	104°46'28.013"W	circle
FALKEN 9N-9C-L BHL REV-2 (2079'FSL & 300'FEL, SEC.09)	7163.64	225.65	-10707.56	3201769.46	1426299.75	40°30'04.781"N	104°46'28.013"W	circle

## WELLPATH COMPOSITION - Ref Wellbore: FALKEN 9N-9C-L AWB Ref Wellpath: FALKEN 9N-9C-L AWP

Start MD [ft]	End MD [ft]	Positional Uncertainty Model	Log Name/Comment	Wellbore
25.00	1764.00	Custom BHI NaviTrak (Standard Rotating+Axial Corr) (Rockies 0.03Gt model)	13 1/2" APS EM SURVEYS <153-1764>	FALKEN 9N-9C-L AWB
1764.00	18885.00	Custom BHI AutoTrak Curve (IFR1, Short) (Rockies 0.03Gt model)	8 1/2" BHI ATC (IFR, SHORT) (ROCKIES GT 0.03 MODEL) <1838'-18885'>	FALKEN 9N-9C-L AWB
18885.00	18909.00	Blind Drilling (std)	Projection to bit	FALKEN 9N-9C-L AWB



SRC ENERGY

# Actual Wellpath Report

FALKEN 9N-9C-L AWP

Page 11 of 11



## REFERENCE WELLPATH IDENTIFICATION

Operator	SRC ENERGY	Slot	SLOT#03 FALKEN 9N-9C-L (1874'FSL & 276'FEL, SEC.11)
Area	COLORADO	Well	FALKEN 9N-9C-L
Field	WELD COUNTY (NAD83,TRUE NORTH)	Wellbore	FALKEN 9N-9C-L AWB
Facility	SEC.11-T06N-R66W		

## WELLPATH COMMENTS

MD [ft]	Inclination [°]	Azimuth [°]	TVD [ft]	Comment
7699.00	88.650	271.160	7148.25	LANDING POINT (2092'FSL & 224'FWL, SEC.12)
18885.00	90.990	271.120	7164.06	LAST BHGE MWD SURVEY (2098'FSL & 270'FEL, SEC.09)
18909.00	90.990	271.120	7163.64	PROJECTION TO BIT (2099'FSL & 294'FEL, SEC.09)