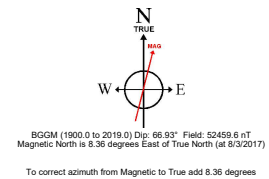
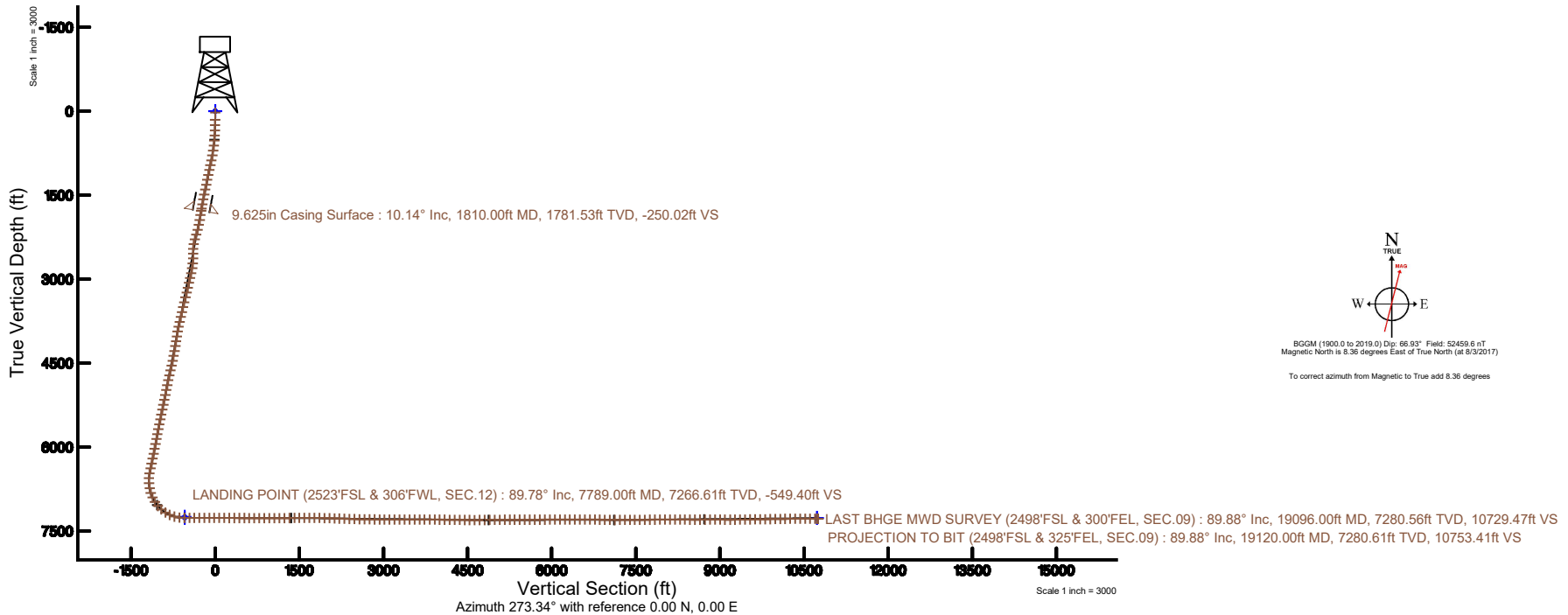
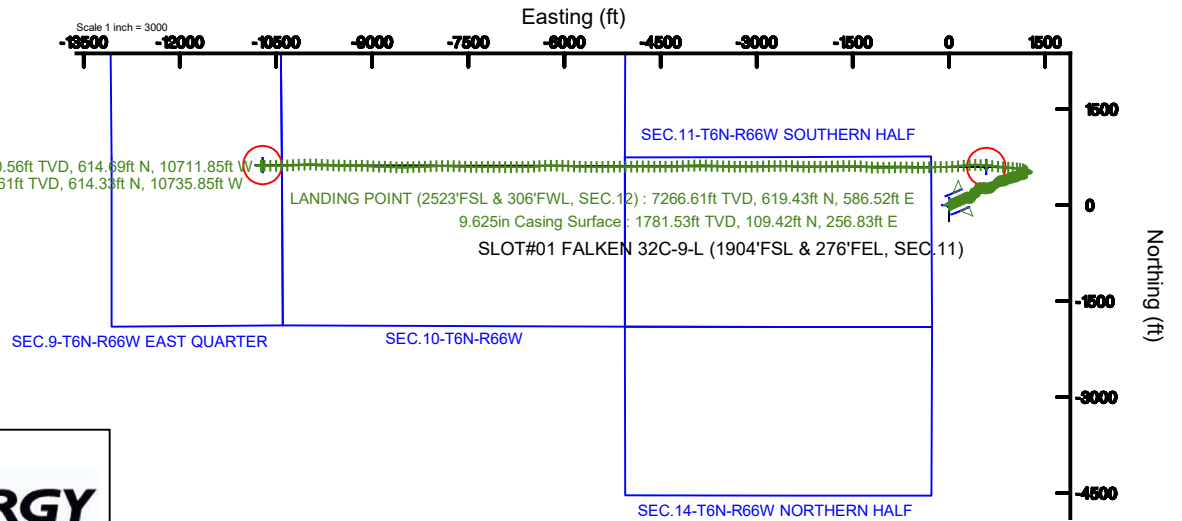


SRC ENERGY

Location: COLORADO Slot: SLOT#01 FALKEN 32C-9-L (1904'FSL & 276'FEL, SEC.11)
 Field: WELD COUNTY (NAD83,TRUE NORTH) Well: FALKEN 32C-9-L
 Facility: SEC.11-T06N-R66W Wellbore: FALKEN 32C-9-L PWB

Plot reference wellpath is FALKEN 32C-9-L (REV-B.0) PWP	Grid System: NAD83 / Lambert Colorado SP, Northern Zone (501), US feet
True vertical depths are referenced to PRECISION 562 (25) (RKB)	* = Wellpath was transformed from a different geodetic datum
Measured depths are referenced to PRECISION 562 (25) (RKB)	North Reference: True north
PRECISION 562 (25) (RKB) to Mean Sea Level: 4835 feet	Scale: True distance
Mean Sea Level to Mud line (At Slot: SLOT#01 FALKEN 32C-9-L (1904'FSL & 276'FEL, SEC.11)): 0 feet	Depths are in feet
Coordinates are in feet referenced to Slot	Created by: doddanna on 2018-02-07
	Database: WellArchitectDB





Actual Wellpath Report

FALKEN 32C-9-L AWP

Page 1 of 11



REFERENCE WELLPATH IDENTIFICATION			
Operator	SRC ENERGY	Slot	SLOT#01 FALKEN 32C-9-L (1904'FSL & 276'FEL, SEC.11)
Area	COLORADO	Well	FALKEN 32C-9-L
Field	WELD COUNTY (NAD83,TRUE NORTH)	Wellbore	FALKEN 32C-9-L AWP
Facility	SEC.11-T06N-R66W		

REPORT SETUP INFORMATION			
Projection System	NAD83 / Lambert Colorado SP, Northern Zone (501), US feet	Software System	WellArchitect® 5.0
North Reference	True	User	Doddanna
Scale	0.999966	Report Generated	2/7/2018 at 12:18:28 PM
Convergence at slot	0.49° East	Database/Source file	WellArchitectDB/FALKEN_32C-9-L_AWP.xml

WELLPATH LOCATION						
	Local coordinates		Grid coordinates		Geographic coordinates	
	North[ft]	East[ft]	Easting[US ft]	Northing[US ft]	Latitude	Longitude
Slot Location	0.00	0.00	3212478.20	1426196.25	40°30'02.869"N	104°44'09.402"W
Facility Reference Pt			3212478.20	1426196.25	40°30'02.869"N	104°44'09.402"W
Field Reference Pt			3171284.48	1426358.81	40°30'07.643"N	104°53'02.634"W

WELLPATH DATUM			
Calculation method	Minimum curvature	PRECISION 562 (25') (RKB) to Facility Vertical Datum	4835.00ft
Horizontal Reference Pt	Slot	PRECISION 562 (25') (RKB) to Mean Sea Level	4835.00ft
Vertical Reference Pt	PRECISION 562 (25') (RKB)	PRECISION 562 (25') (RKB) to Mud Line at Slot (SLOT#01 FALKEN 32C-9-L (1904'FSL & 276'FEL, SEC.11))	4835.00ft
MD Reference Pt	PRECISION 562 (25') (RKB)	Section Origin	N 0.00, E 0.00 ft
Field Vertical Reference	Mean Sea Level	Section Azimuth	273.34°



Actual Wellpath Report

FALKEN 32C-9-L AWP

Page 2 of 11



REFERENCE WELLPATH IDENTIFICATION

Operator	SRC ENERGY	Slot	SLOT#01 FALKEN 32C-9-L (1904'FSL & 276'FEL, SEC.11)
Area	COLORADO	Well	FALKEN 32C-9-L
Field	WELD COUNTY (NAD83,TRUE NORTH)	Wellbore	FALKEN 32C-9-L AWB
Facility	SEC.11-T06N-R66W		

WELLPATH DATA (216 stations) † = interpolated/extrapolated station

MD [ft]	Inclination [°]	Azimuth [°]	TVD [ft]	Vert Sect [ft]	North [ft]	East [ft]	DLS [°/100ft]	Comments
0.00†	0.000	74.260	0.00	0.00	0.00	0.00	0.00	
25.00	0.000	74.260	25.00	0.00	0.00	0.00	0.00	
153.00	0.660	74.260	153.00	-0.70	0.20	0.71	0.52	
247.00	1.240	75.000	246.98	-2.17	0.61	2.21	0.62	
342.00	2.080	74.870	341.94	-4.78	1.33	4.87	0.88	
436.00	3.870	67.930	435.81	-9.27	2.96	9.46	1.94	
526.00	5.610	71.320	525.50	-16.09	5.51	16.44	1.96	
614.00	6.920	71.060	612.97	-24.98	8.61	25.53	1.49	
704.00	8.810	69.860	702.12	-36.32	12.75	37.13	2.11	
793.00	11.430	67.300	789.73	-50.50	18.50	51.67	2.99	
883.00	13.330	65.450	877.64	-67.68	26.25	69.33	2.16	
972.00	13.480	66.380	964.21	-86.00	34.67	88.17	0.30	
1061.00	13.370	66.660	1050.78	-104.44	42.90	107.12	0.14	
1151.00	13.290	66.710	1138.35	-122.98	51.11	126.18	0.09	
1240.00	13.390	65.640	1224.95	-141.25	59.41	144.96	0.30	
1330.00	13.170	66.480	1312.55	-159.62	67.80	163.85	0.33	
1419.00	13.360	67.080	1399.17	-177.89	75.85	182.62	0.26	
1509.00	12.790	63.980	1486.84	-195.90	84.27	201.15	1.00	
1598.00	12.550	63.970	1573.67	-212.91	92.83	218.69	0.27	
1688.00	11.470	67.020	1661.70	-229.45	100.62	235.72	1.39	
1769.00	10.590	67.530	1741.20	-243.37	106.61	250.01	1.09	
1885.00	9.330	68.040	1855.45	-261.47	114.20	268.58	1.09	
1975.00	9.360	84.270	1944.27	-275.29	117.66	282.63	2.92	
2064.00	12.200	100.140	2031.71	-291.78	116.73	299.10	4.59	
2153.00	14.770	101.340	2118.25	-312.36	112.84	319.48	2.90	
2242.00	17.380	78.340	2203.85	-336.46	113.29	343.65	7.67	
2332.00	21.540	57.650	2288.79	-362.91	124.87	370.82	8.88	
2421.00	19.150	35.060	2372.36	-383.88	145.60	393.04	9.16	
2511.00	15.980	10.970	2458.27	-393.30	169.88	403.90	8.73	
2599.00	12.280	355.330	2543.62	-393.61	191.12	405.44	6.01	



Actual Wellpath Report

FALKEN 32C-9-L AWP

Page 3 of 11



REFERENCE WELLPATH IDENTIFICATION

Operator	SRC ENERGY	Slot	SLOT#01 FALKEN 32C-9-L (1904'FSL & 276'FEL, SEC.11)
Area	COLORADO	Well	FALKEN 32C-9-L
Field	WELD COUNTY (NAD83,TRUE NORTH)	Wellbore	FALKEN 32C-9-L AWB
Facility	SEC.11-T06N-R66W		

WELLPATH DATA (216 stations)

MD [ft]	Inclination [°]	Azimuth [°]	TVD [ft]	Vert Sect [ft]	North [ft]	East [ft]	DLS [°/100ft]	Comments
2688.00	12.780	12.440	2630.53	-393.84	210.17	406.79	4.19	
2778.00	12.830	29.410	2718.33	-399.81	228.60	413.85	4.16	
2867.00	12.770	45.580	2805.14	-410.77	244.10	425.73	4.01	
2957.00	14.050	64.520	2892.73	-427.03	255.77	442.70	5.06	
3046.00	13.780	74.540	2979.13	-446.54	263.24	462.68	2.72	
3135.00	13.130	85.500	3065.70	-466.59	266.86	482.97	2.95	
3225.00	14.040	90.830	3153.19	-487.62	267.50	504.08	1.72	
3314.00	13.830	91.080	3239.57	-509.04	267.15	525.51	0.25	
3404.00	12.920	98.120	3327.13	-529.81	265.52	546.23	2.07	
3494.00	13.990	97.130	3414.66	-550.70	262.75	566.98	1.22	
3583.00	14.000	84.990	3501.04	-572.09	262.35	588.39	3.29	
3673.00	14.070	73.590	3588.37	-593.16	266.40	609.73	3.07	
3762.00	12.790	81.350	3674.94	-612.98	270.94	629.85	2.48	
3852.00	14.140	82.810	3762.46	-633.53	273.81	650.61	1.55	
3941.00	14.270	64.450	3848.79	-653.83	279.90	671.30	5.04	
4030.00	13.020	44.800	3935.32	-670.08	291.76	688.27	5.37	
4120.00	13.270	45.040	4022.96	-683.67	306.25	702.72	0.28	
4209.00	13.260	42.400	4109.59	-696.89	321.00	716.83	0.68	
4299.00	13.170	46.030	4197.20	-710.35	335.74	731.17	0.93	
4388.00	13.140	53.470	4283.88	-724.99	348.81	746.60	1.90	
4478.00	13.070	59.090	4371.53	-741.25	360.12	763.55	1.42	
4567.00	13.010	66.970	4458.25	-758.54	369.21	781.41	2.00	
4657.00	13.140	76.430	4545.92	-777.41	375.58	800.68	2.38	
4746.00	13.320	82.800	4632.57	-797.17	379.24	820.68	1.65	
4836.00	12.430	80.490	4720.30	-816.81	382.14	840.52	1.14	
4925.00	12.680	78.530	4807.18	-835.59	385.66	859.54	0.56	
5015.00	12.680	70.130	4894.99	-854.22	390.98	878.51	2.05	
5104.00	12.590	63.810	4981.84	-871.63	398.58	896.40	1.56	
5194.00	12.830	63.750	5069.63	-888.86	407.33	914.17	0.27	
5283.00	13.310	66.380	5156.33	-906.58	415.81	932.42	0.86	



SRC ENERGY

Actual Wellpath Report

FALKEN 32C-9-L AWP

Page 4 of 11

**BAKER
HUGHES****REFERENCE WELLPATH IDENTIFICATION**

Operator	SRC ENERGY	Slot	SLOT#01 FALKEN 32C-9-L (1904'FSL & 276'FEL, SEC.11)
Area	COLORADO	Well	FALKEN 32C-9-L
Field	WELD COUNTY (NAD83,TRUE NORTH)	Wellbore	FALKEN 32C-9-L AWB
Facility	SEC.11-T06N-R66W		

WELLPATH DATA (216 stations)

MD [ft]	Inclination [°]	Azimuth [°]	TVD [ft]	Vert Sect [ft]	North [ft]	East [ft]	DLS [°/100ft]	Comments
5373.00	11.730	76.710	5244.19	-924.58	422.06	950.82	3.04	
5462.00	12.180	82.000	5331.27	-942.46	425.45	968.92	1.33	
5552.00	12.170	75.060	5419.25	-960.78	429.22	987.49	1.63	
5641.00	12.160	74.220	5506.25	-978.54	434.18	1005.57	0.20	
5731.00	12.240	74.070	5594.22	-996.50	439.38	1023.87	0.10	
5820.00	11.980	73.120	5681.24	-1014.08	444.65	1041.78	0.37	
5910.00	12.120	69.540	5769.25	-1031.48	450.67	1059.57	0.84	
6000.00	12.250	61.660	5857.23	-1048.26	458.50	1076.83	1.85	
6089.00	12.290	59.920	5944.20	-1064.20	467.73	1093.33	0.42	
6179.00	11.440	71.850	6032.29	-1080.50	475.31	1110.11	2.88	
6268.00	11.940	76.920	6119.45	-1097.54	480.15	1127.46	1.28	
6358.00	11.930	78.620	6207.50	-1115.47	484.09	1145.65	0.39	
6447.00	12.990	80.090	6294.40	-1134.10	487.63	1164.52	1.24	
6536.00	12.840	72.960	6381.16	-1153.11	492.25	1183.83	1.80	
6626.00	12.950	66.580	6468.89	-1171.49	499.19	1202.65	1.59	
6716.00	8.230	21.080	6557.48	-1182.48	509.23	1214.24	10.27	
6805.00	7.760	307.010	6645.82	-1179.41	518.81	1211.73	10.81	
6895.00	12.550	315.760	6734.39	-1167.13	529.48	1200.05	5.58	
6984.00	19.000	311.020	6819.99	-1148.50	545.93	1182.35	7.38	
7074.00	26.120	286.940	6903.23	-1117.55	561.37	1152.25	12.81	
7163.00	32.650	276.550	6980.79	-1074.46	569.84	1109.58	9.28	
7253.00	39.770	273.630	7053.36	-1021.36	574.43	1056.66	8.14	
7342.00	47.940	274.410	7117.48	-959.76	578.78	995.20	9.20	
7432.00	57.010	274.750	7172.25	-888.47	584.49	924.13	10.08	
7521.00	67.220	276.320	7213.82	-809.97	592.12	845.94	11.58	
7610.00	74.210	276.120	7243.19	-726.12	601.21	762.48	7.86	
7700.00	82.970	276.050	7260.98	-638.09	610.55	674.84	9.73	
7789.00	89.780	275.430	7266.61	-549.40	619.43	586.52	7.68	LANDING POINT (2523'FSL & 306'FWL, SEC.12)
7879.00	89.910	273.170	7266.85	-459.42	626.18	496.78	2.52	
7968.00	90.120	270.100	7266.83	-370.47	628.72	407.82	3.46	



Actual Wellpath Report

FALKEN 32C-9-L AWP

Page 5 of 11



REFERENCE WELLPATH IDENTIFICATION

Operator	SRC ENERGY	Slot	SLOT#01 FALKEN 32C-9-L (1904'FSL & 276'FEL, SEC.11)
Area	COLORADO	Well	FALKEN 32C-9-L
Field	WELD COUNTY (NAD83,TRUE NORTH)	Wellbore	FALKEN 32C-9-L AWB
Facility	SEC.11-T06N-R66W		

WELLPATH DATA (216 stations)

MD [ft]	Inclination [°]	Azimuth [°]	TVD [ft]	Vert Sect [ft]	North [ft]	East [ft]	DLS [°/100ft]	Comments
8058.00	89.910	264.990	7266.80	-280.96	624.86	317.94	5.68	
8147.00	89.820	263.600	7267.01	-193.07	616.02	229.38	1.57	
8237.00	89.780	264.460	7267.33	-104.25	606.65	139.87	0.96	
8326.00	89.970	266.930	7267.52	-16.05	599.97	51.13	2.78	
8415.00	89.780	268.200	7267.71	72.49	596.19	-37.79	1.44	
8505.00	89.820	269.870	7268.03	162.24	594.68	-127.77	1.86	
8594.00	89.720	268.710	7268.39	251.01	593.57	-216.76	1.31	
8684.00	89.880	267.690	7268.70	340.65	590.75	-306.72	1.15	
8773.00	89.820	268.730	7268.93	429.29	587.97	-395.67	1.17	
8863.00	89.630	269.990	7269.37	519.07	586.96	-485.66	1.42	
8952.00	89.850	271.930	7269.77	607.99	588.45	-574.65	2.19	
9041.00	89.910	271.030	7269.96	696.94	590.75	-663.62	1.01	
9131.00	89.820	268.960	7270.17	786.78	590.74	-753.61	2.30	
9221.00	90.030	269.090	7270.29	876.52	589.21	-843.60	0.27	
9310.00	90.000	268.690	7270.26	965.25	587.49	-932.58	0.45	
9400.00	90.120	268.980	7270.17	1054.98	585.66	-1022.56	0.35	
9489.00	89.970	270.630	7270.10	1143.80	585.36	-1111.56	1.86	
9579.00	89.940	273.890	7270.17	1233.77	588.90	-1201.48	3.62	
9668.00	91.140	275.750	7269.33	1322.74	596.38	-1290.15	2.49	
9758.00	90.920	274.760	7267.71	1412.67	604.62	-1379.76	1.13	
9847.00	90.890	271.850	7266.31	1501.65	609.75	-1468.59	3.27	
9937.00	89.690	269.940	7265.85	1591.56	611.16	-1558.57	2.51	
10026.00	89.450	268.690	7266.52	1680.34	610.09	-1647.56	1.43	
10116.00	89.570	267.770	7267.29	1769.97	607.32	-1737.51	1.03	
10205.00	89.380	268.140	7268.10	1858.58	604.14	-1826.45	0.47	
10295.00	88.250	269.210	7269.96	1948.26	602.06	-1916.41	1.73	
10384.00	87.940	269.030	7272.92	2036.96	600.69	-2005.35	0.40	
10474.00	88.090	268.770	7276.04	2126.64	598.97	-2095.28	0.33	
10563.00	88.250	271.120	7278.88	2215.43	598.88	-2184.22	2.65	
10652.00	88.030	272.690	7281.77	2304.35	601.84	-2273.13	1.78	



Actual Wellpath Report

FALKEN 32C-9-L AWP

Page 6 of 11



REFERENCE WELLPATH IDENTIFICATION

Operator	SRC ENERGY	Slot	SLOT#01 FALKEN 32C-9-L (1904'FSL & 276'FEL, SEC.11)
Area	COLORADO	Well	FALKEN 32C-9-L
Field	WELD COUNTY (NAD83,TRUE NORTH)	Wellbore	FALKEN 32C-9-L AWB
Facility	SEC.11-T06N-R66W		

WELLPATH DATA (216 stations)

MD [ft]	Inclination [°]	Azimuth [°]	TVD [ft]	Vert Sect [ft]	North [ft]	East [ft]	DLS [°/100ft]	Comments
10742.00	88.090	272.670	7284.82	2394.30	606.04	-2362.98	0.07	
10831.00	88.280	271.430	7287.64	2483.23	609.23	-2451.87	1.41	
10921.00	88.060	269.980	7290.51	2573.08	610.33	-2541.82	1.63	
11010.00	89.570	269.620	7292.35	2661.89	610.02	-2630.79	1.74	
11100.00	89.420	269.570	7293.15	2751.70	609.39	-2720.79	0.18	
11190.00	89.380	268.550	7294.09	2841.44	607.91	-2810.77	1.13	
11279.00	89.480	268.120	7294.97	2930.09	605.32	-2899.73	0.50	
11368.00	89.450	267.650	7295.81	3018.69	602.04	-2988.66	0.53	
11458.00	89.450	269.560	7296.67	3108.37	599.85	-3078.63	2.12	
11547.00	89.420	270.040	7297.55	3197.20	599.54	-3167.62	0.54	
11637.00	90.180	270.510	7297.86	3287.07	599.97	-3257.62	0.99	
11726.00	90.150	270.690	7297.60	3375.96	600.90	-3346.62	0.21	
11816.00	90.150	272.510	7297.37	3465.92	603.41	-3436.58	2.02	
11905.00	90.150	272.030	7297.14	3554.90	606.94	-3525.51	0.54	
11995.00	90.150	272.190	7296.90	3644.88	610.25	-3615.44	0.18	
12084.00	90.120	272.520	7296.69	3733.87	613.91	-3704.37	0.37	
12174.00	89.660	272.700	7296.86	3823.86	618.01	-3794.28	0.55	
12264.00	89.420	269.960	7297.59	3913.79	620.10	-3884.24	3.06	
12353.00	89.380	267.570	7298.52	4002.50	618.18	-3973.21	2.69	
12443.00	89.420	267.410	7299.46	4092.02	614.24	-4063.12	0.18	
12532.00	89.350	266.940	7300.42	4180.50	609.85	-4152.00	0.53	
12622.00	89.350	267.430	7301.44	4269.98	605.43	-4241.89	0.54	
12711.00	89.420	268.400	7302.39	4358.57	602.19	-4330.82	1.09	
12801.00	89.480	269.170	7303.26	4448.28	600.29	-4420.80	0.86	
12890.00	89.380	270.950	7304.14	4537.13	600.38	-4509.79	2.00	
12980.00	89.820	271.010	7304.77	4627.05	601.92	-4599.77	0.49	
13069.00	90.580	270.660	7304.46	4715.96	603.21	-4688.76	0.94	
13158.00	90.770	270.220	7303.41	4804.84	603.90	-4777.75	0.54	
13248.00	90.860	269.650	7302.13	4894.67	603.80	-4867.74	0.64	
13338.00	90.490	268.840	7301.07	4984.43	602.61	-4957.73	0.99	



Actual Wellpath Report

FALKEN 32C-9-L AWP

Page 7 of 11



REFERENCE WELLPATH IDENTIFICATION

Operator	SRC ENERGY	Slot	SLOT#01 FALKEN 32C-9-L (1904'FSL & 276'FEL, SEC.11)
Area	COLORADO	Well	FALKEN 32C-9-L
Field	WELD COUNTY (NAD83,TRUE NORTH)	Wellbore	FALKEN 32C-9-L AWB
Facility	SEC.11-T06N-R66W		

WELLPATH DATA (216 stations)

MD [ft]	Inclination [°]	Azimuth [°]	TVD [ft]	Vert Sect [ft]	North [ft]	East [ft]	DLS [°/100ft]	Comments
13427.00	90.770	270.300	7300.09	5073.23	601.94	-5046.72	1.67	
13517.00	90.120	269.420	7299.39	5163.06	601.72	-5136.72	1.22	
13606.00	90.000	269.180	7299.30	5251.84	600.64	-5225.71	0.30	
13696.00	89.970	268.890	7299.32	5341.59	599.12	-5315.70	0.32	
13785.00	90.120	269.160	7299.25	5430.33	597.61	-5404.68	0.35	
13875.00	89.850	269.080	7299.28	5520.09	596.22	-5494.67	0.31	
13964.00	90.060	270.220	7299.35	5608.90	595.68	-5583.67	1.30	
14054.00	90.060	272.120	7299.25	5698.84	597.52	-5673.65	2.11	
14143.00	90.280	273.420	7298.99	5787.83	601.82	-5762.54	1.48	
14233.00	90.310	273.160	7298.52	5877.83	606.98	-5852.39	0.29	
14322.00	90.340	272.280	7298.02	5966.82	611.21	-5941.29	0.99	
14412.00	90.370	271.960	7297.46	6056.80	614.54	-6031.22	0.36	
14501.00	89.910	270.930	7297.24	6145.75	616.78	-6120.19	1.27	
14591.00	89.820	269.300	7297.46	6235.60	616.96	-6210.19	1.81	
14680.00	90.000	268.130	7297.60	6324.31	614.96	-6299.17	1.33	
14770.00	89.880	265.750	7297.69	6413.74	610.16	-6389.03	2.65	
14859.00	89.850	264.880	7297.90	6501.87	602.89	-6477.73	0.98	
14949.00	89.880	267.670	7298.11	6591.17	597.04	-6567.53	3.10	
15038.00	90.150	269.690	7298.09	6679.88	594.99	-6656.51	2.29	
15128.00	90.060	269.790	7297.92	6769.70	594.59	-6746.50	0.15	
15217.00	88.800	269.150	7298.81	6858.49	593.76	-6835.49	1.59	
15307.00	88.710	271.220	7300.77	6948.32	594.05	-6925.47	2.30	
15396.00	88.490	271.280	7302.94	7037.24	595.99	-7014.42	0.26	
15486.00	90.620	270.960	7303.64	7127.16	597.75	-7104.39	2.39	
15575.00	90.490	269.710	7302.78	7216.03	598.27	-7193.39	1.41	
15664.00	90.340	269.020	7302.13	7304.82	597.29	-7282.38	0.79	
15754.00	90.120	268.430	7301.77	7394.52	595.29	-7372.35	0.70	
15843.00	90.430	271.540	7301.34	7483.36	595.26	-7461.34	3.51	
15933.00	90.430	273.620	7300.67	7573.34	599.31	-7551.24	2.31	
16022.00	90.580	272.790	7299.88	7662.34	604.29	-7640.10	0.95	



Actual Wellpath Report

FALKEN 32C-9-L AWP

Page 8 of 11



REFERENCE WELLPATH IDENTIFICATION

Operator	SRC ENERGY	Slot	SLOT#01 FALKEN 32C-9-L (1904'FSL & 276'FEL, SEC.11)
Area	COLORADO	Well	FALKEN 32C-9-L
Field	WELD COUNTY (NAD83,TRUE NORTH)	Wellbore	FALKEN 32C-9-L AWB
Facility	SEC.11-T06N-R66W		

WELLPATH DATA (216 stations)

MD [ft]	Inclination [°]	Azimuth [°]	TVD [ft]	Vert Sect [ft]	North [ft]	East [ft]	DLS [°/100ft]	Comments
16112.00	90.490	272.250	7299.04	7752.32	608.25	-7730.01	0.61	
16201.00	90.460	270.510	7298.31	7841.27	610.39	-7818.98	1.96	
16291.00	90.550	269.920	7297.51	7931.13	610.73	-7908.97	0.66	
16381.00	90.370	268.850	7296.79	8020.91	609.76	-7998.96	1.21	
16470.00	90.580	266.860	7296.05	8109.49	606.43	-8087.89	2.25	
16559.00	89.380	267.330	7296.08	8197.96	601.92	-8176.78	1.45	
16649.00	89.570	269.110	7296.91	8287.60	599.12	-8266.73	1.99	
16739.00	89.350	267.220	7297.76	8377.22	596.24	-8356.67	2.11	
16828.00	89.450	267.210	7298.69	8465.71	591.92	-8445.56	0.11	
16917.00	89.970	269.870	7299.14	8554.39	589.65	-8534.52	3.05	
17007.00	90.400	273.700	7298.85	8644.33	592.45	-8624.46	4.28	
17096.00	90.340	272.140	7298.27	8733.33	596.99	-8713.34	1.75	
17186.00	90.520	271.440	7297.60	8823.29	599.80	-8803.30	0.80	
17275.00	90.650	271.340	7296.69	8912.23	601.96	-8892.26	0.18	
17365.00	88.920	273.650	7297.03	9002.21	605.87	-8982.17	3.21	
17454.00	88.830	272.560	7298.77	9091.20	610.69	-9071.02	1.23	
17544.00	90.460	271.940	7299.33	9181.17	614.23	-9160.95	1.94	
17633.00	90.580	270.230	7298.52	9270.10	615.91	-9249.92	1.93	
17723.00	90.920	269.750	7297.35	9359.94	615.90	-9339.91	0.65	
17812.00	90.890	270.780	7295.94	9448.80	616.31	-9428.90	1.16	
17902.00	91.020	272.280	7294.44	9538.73	618.71	-9518.85	1.67	
17991.00	90.890	272.880	7292.96	9627.71	622.72	-9607.75	0.69	
18081.00	90.920	273.100	7291.54	9717.70	627.41	-9697.62	0.25	
18170.00	90.920	271.830	7290.11	9806.68	631.24	-9786.52	1.43	
18260.00	91.020	270.860	7288.58	9896.61	633.35	-9876.48	1.08	
18349.00	90.920	270.470	7287.08	9985.50	634.38	-9965.46	0.45	
18439.00	90.890	268.340	7285.65	10075.27	633.45	-10055.44	2.37	
18528.00	90.830	266.340	7284.32	10163.77	629.32	-10144.33	2.25	
18618.00	90.950	266.210	7282.92	10253.07	623.47	-10234.13	0.20	
18707.00	91.020	267.480	7281.39	10341.49	618.57	-10322.98	1.43	



Actual Wellpath Report

FALKEN 32C-9-L AWP

Page 9 of 11



REFERENCE WELLPATH IDENTIFICATION

Operator	SRC ENERGY	Slot	SLOT#01 FALKEN 32C-9-L (1904'FSL & 276'FEL, SEC.11)
Area	COLORADO	Well	FALKEN 32C-9-L
Field	WELD COUNTY (NAD83,TRUE NORTH)	Wellbore	FALKEN 32C-9-L AWB
Facility	SEC.11-T06N-R66W		

WELLPATH DATA (216 stations)

MD [ft]	Inclination [°]	Azimuth [°]	TVD [ft]	Vert Sect [ft]	North [ft]	East [ft]	DLS [°/100ft]	Comments
18797.00	90.430	267.640	7280.25	10431.02	614.74	-10412.89	0.68	
18886.00	89.910	271.340	7279.99	10519.80	613.95	-10501.87	4.20	
18975.00	89.780	270.440	7280.23	10608.72	615.33	-10590.86	1.02	
19065.00	89.880	269.290	7280.49	10698.55	615.12	-10680.86	1.28	
19096.00	89.880	269.130	7280.56	10729.47	614.69	-10711.85	0.52	LAST BHGE MWD SURVEY (2498'FSL & 300'FEL, SEC.09)
19120.00	89.880	269.130	7280.61	10753.41	614.33	-10735.85	0.00	PROJECTION TO BIT (2498'FSL & 325'FEL, SEC.09)

HOLE & CASING SECTIONS - Ref Wellbore: FALKEN 32C-9-L AWB Ref Wellpath: FALKEN 32C-9-L AWP

String/Diameter	Start MD [ft]	End MD [ft]	Interval [ft]	Start TVD [ft]	End TVD [ft]	Start N/S [ft]	Start E/W [ft]	End N/S [ft]	End E/W [ft]
13.5in Open Hole	25.00	1810.00	1785.00	25.00	1781.53	0.00	0.00	109.42	256.83
9.625in Casing Surface	25.00	1810.00	1785.00	25.00	1781.53	0.00	0.00	109.42	256.83
8.5in Open Hole	1810.00	19120.00	17310.00	1781.53	7280.61	109.42	256.83	614.33	-10735.85



Actual Wellpath Report

FALKEN 32C-9-L AWP

Page 10 of 11



REFERENCE WELLPATH IDENTIFICATION

Operator	SRC ENERGY	Slot	SLOT#01 FALKEN 32C-9-L (1904'FSL & 276'FEL, SEC.11)
Area	COLORADO	Well	FALKEN 32C-9-L
Field	WELD COUNTY (NAD83,TRUE NORTH)	Wellbore	FALKEN 32C-9-L AWB
Facility	SEC.11-T06N-R66W		

TARGETS

Name	TVD [ft]	North [ft]	East [ft]	Grid East [US ft]	Grid North [US ft]	Latitude	Longitude	Shape
SEC.10-T6N-R66W	0.00	0.00	0.00	3212478.20	1426196.25	40°30'02.869"N	104°44'09.402"W	polygon
SEC.11-T6N-R66W SOUTHERN HALF	0.00	0.00	0.00	3212478.20	1426196.25	40°30'02.869"N	104°44'09.402"W	polygon
SEC.14-T6N-R66W NORTHERN HALF	0.00	0.00	0.00	3212478.20	1426196.25	40°30'02.869"N	104°44'09.402"W	polygon
SEC.9-T6N-R66W EAST QUARTER	0.00	0.00	0.00	3212478.20	1426196.25	40°30'02.869"N	104°44'09.402"W	polygon
FALKEN 32C-9-L TOP OF PROD ON PLAT (2499'FSL & 300'FWL, SEC.12)	7245.00	595.34	580.38	3213053.41	1426796.55	40°30'08.752"N	104°44'01.889"W	circle
FALKEN 32C-9-L BHL ON PLAT (2509'FSL & 300'FEL, SEC.09)	7265.00	625.70	-10710.99	3201762.60	1426729.61	40°30'09.029"N	104°46'28.056"W	circle
FALKEN 32C-9-L TOP OF PROD REV-2 (2499'FSL & 300'FWL, SEC.12)	7267.71	595.34	580.38	3213053.41	1426796.55	40°30'08.752"N	104°44'01.889"W	point
FALKEN 32C-9-L BHL REV-2 (2509'FSL & 300'FEL, SEC.09)	7269.43	625.70	-10710.99	3201762.60	1426729.61	40°30'09.029"N	104°46'28.056"W	point

WELLPATH COMPOSITION - Ref Wellbore: FALKEN 32C-9-L AWB Ref Wellpath: FALKEN 32C-9-L AWP

Start MD [ft]	End MD [ft]	Positional Uncertainty Model	Log Name/Comment	Wellbore
25.00	1769.00	Custom BHI NaviTrak (IFR1, Standard Rotating+Axial Corr) (Rockies 0.03Gt model)	13 1/2" APS EM SURVEYS <153-1769>	FALKEN 32C-9-L AWB
1769.00	19096.00	Custom BHI AutoTrak Curve (IFR1, Short) (Rockies 0.03Gt model)	8 1/2" ATC SURVEYS <1885'-19096'>	FALKEN 32C-9-L AWB
19096.00	19120.00	Blind Drilling (std)	Projection to bit	FALKEN 32C-9-L AWB



Actual Wellpath Report

FALKEN 32C-9-L AWP

Page 11 of 11



REFERENCE WELLPATH IDENTIFICATION

Operator	SRC ENERGY	Slot	SLOT#01 FALKEN 32C-9-L (1904'FSL & 276'FEL, SEC.11)
Area	COLORADO	Well	FALKEN 32C-9-L
Field	WELD COUNTY (NAD83,TRUE NORTH)	Wellbore	FALKEN 32C-9-L AWB
Facility	SEC.11-T06N-R66W		

WELLPATH COMMENTS

MD [ft]	Inclination [°]	Azimuth [°]	TVD [ft]	Comment
7789.00	89.780	275.430	7266.61	LANDING POINT (2523'FSL & 306'FWL, SEC.12)
19096.00	89.880	269.130	7280.56	LAST BHGE MWD SURVEY (2498'FSL & 300'FEL, SEC.09)
19120.00	89.880	269.130	7280.61	PROJECTION TO BIT (2498'FSL & 325'FEL, SEC.09)