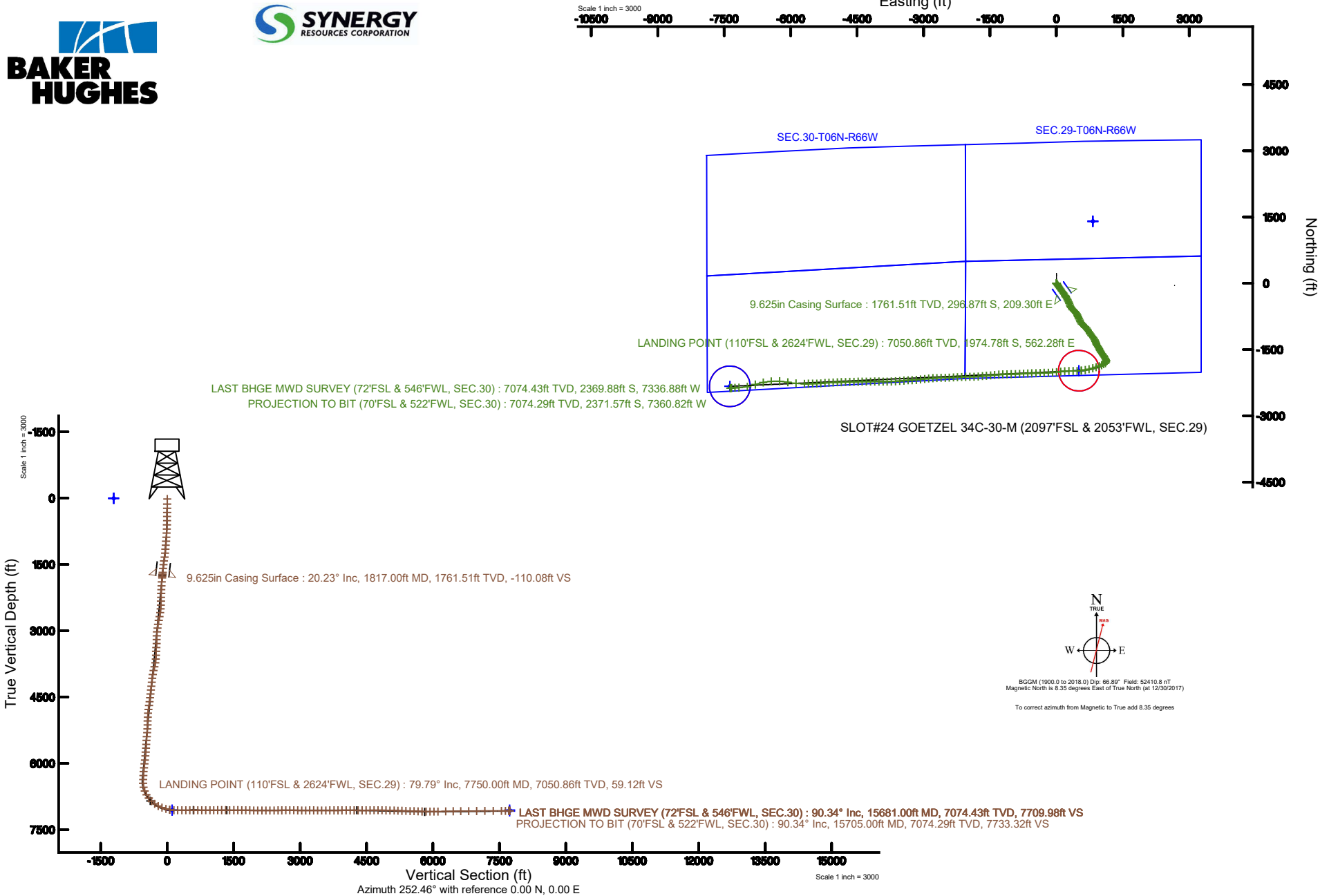


SRC ENERGY

Location: COLORADO Slot: SLOT#24 GOETZEL 34C-30-M (2097'FSL & 2053'FWL, SEC.29)
Field: WELD COUNTY (NAD83,TRUE NORTH) Well: GOETZEL 34C-30-M
Facility: SEC.29-T06N-R66W Wellbore: GOETZEL 34C-30-M PWB

Plot reference wellpath is GOETZEL 34C-30-M REV-8.0 PWB	Grid System: NAD83 / Lambert Colorado SP, Northern Zone (501), US feet
True vertical depths are referenced to PRECISION 462 (20') (RKB)	* = Wellpath was transformed from a different geodetic datum
Measured depths are referenced to PRECISION 462 (20') (RKB)	North Reference: True north
PRECISION 462 (20') (RKB) to Mean Sea Level: 4752 feet	Scale: True distance
Mean Sea Level to Mud line (At Slot: SLOT#24 GOETZEL 34C-30-M (2097'FSL & 2053'FWL, SEC.29)): 0 feet	Depths are in feet
Coordinates are in feet referenced to Slot	Created by: doddanna on 2018-01-10
	Database: WellArchitectDB





Actual Wellpath Report

GOETZEL 34C-30-M AWP

Page 1 of 9



REFERENCE WELLPATH IDENTIFICATION

Operator	SRC ENERGY	Slot	SLOT#24 GOETZEL 34C-30-M (2097'FSL & 2053'FWL, SEC.29)
Area	COLORADO	Well	GOETZEL 34C-30-M
Field	WELD COUNTY (NAD83,TRUE NORTH)	Wellbore	GOETZEL 34C-30-M AWP
Facility	SEC.29-T06N-R66W		

REPORT SETUP INFORMATION

Projection System	NAD83 / Lambert Colorado SP, Northern Zone (501), US feet	Software System	WellArchitect® 5.0
North Reference	True	User	Doddanna
Scale	0.999963	Report Generated	1/10/2018 at 12:00:54 PM
Convergence at slot	0.45° East	Database/Source file	WellArchitectDB/GOETZEL_34C-30-M_AWP.xml

WELLPATH LOCATION

	Local coordinates		Grid coordinates		Geographic coordinates	
	North[ft]	East[ft]	Easting[US ft]	Northing[US ft]	Latitude	Longitude
Slot Location	-1402.60	-823.18	3193637.57	1410263.02	40°27'26.957"N	104°48'14.908"W
Facility Reference Pt			3194449.65	1411672.01	40°27'40.817"N	104°48'04.259"W
Field Reference Pt			3171284.48	1426358.81	40°30'07.643"N	104°53'02.634"W

WELLPATH DATUM

Calculation method	Minimum curvature	PRECISION 462 (20') (RKB) to Facility Vertical Datum	4752.00ft
Horizontal Reference Pt	Slot	PRECISION 462 (20') (RKB) to Mean Sea Level	4752.00ft
Vertical Reference Pt	PRECISION 462 (20') (RKB)	PRECISION 462 (20') (RKB) to Mud Line at Slot (SLOT#24 GOETZEL 34C-30-M (2097'FSL & 2053'FWL, SEC.29))	4752.00ft
MD Reference Pt	PRECISION 462 (20') (RKB)	Section Origin	N 0.00, E 0.00 ft
Field Vertical Reference	Mean Sea Level	Section Azimuth	252.46°



Actual Wellpath Report

GOETZEL 34C-30-M AWP

Page 2 of 9



REFERENCE WELLPATH IDENTIFICATION

Operator	SRC ENERGY	Slot	SLOT#24 GOETZEL 34C-30-M (2097'FSL & 2053'FWL, SEC.29)
Area	COLORADO	Well	GOETZEL 34C-30-M
Field	WELD COUNTY (NAD83,TRUE NORTH)	Wellbore	GOETZEL 34C-30-M AWB
Facility	SEC.29-T06N-R66W		

WELLPATH DATA (164 stations) † = interpolated/extrapolated station

MD [ft]	Inclination [°]	Azimuth [°]	TVD [ft]	Vert Sect [ft]	North [ft]	East [ft]	DLS [°/100ft]	Comments
0.00†	0.000	74.270	0.00	0.00	0.00	0.00	0.00	
20.00	0.000	74.270	20.00	0.00	0.00	0.00	0.00	
133.00	0.150	74.270	133.00	-0.15	0.04	0.14	0.13	
227.00	0.420	65.500	227.00	-0.61	0.22	0.57	0.29	
322.00	0.580	139.620	322.00	-1.15	-0.01	1.20	0.65	
416.00	2.230	140.380	415.96	-2.02	-1.78	2.68	1.76	
510.00	4.020	144.320	509.82	-3.73	-5.86	5.77	1.92	
605.00	6.740	146.140	604.39	-6.33	-13.20	10.81	2.87	
698.00	8.810	147.350	696.53	-9.72	-23.73	17.70	2.23	
793.00	10.490	146.730	790.19	-13.96	-37.08	26.37	1.77	
886.00	12.150	145.570	881.37	-19.10	-52.24	36.55	1.80	
980.00	14.020	146.500	972.93	-25.11	-69.89	48.43	2.00	
1073.00	15.650	143.900	1062.83	-32.20	-89.42	62.03	1.89	
1168.00	16.940	143.910	1154.01	-40.68	-110.96	77.74	1.36	
1263.00	18.630	145.660	1244.47	-49.46	-134.68	94.45	1.87	
1358.00	21.340	142.420	1333.74	-59.77	-160.91	113.56	3.08	
1450.00	22.300	141.960	1419.15	-71.62	-187.92	134.52	1.06	
1543.00	21.140	145.860	1505.55	-82.59	-215.70	154.81	1.99	
1635.00	20.960	146.040	1591.41	-91.98	-243.08	173.31	0.21	
1728.00	20.930	146.480	1678.26	-101.25	-270.73	191.78	0.17	
1773.00	20.830	146.340	1720.31	-105.69	-284.09	200.65	0.25	
1833.00	20.010	145.130	1776.54	-111.70	-301.39	212.43	1.54	
1864.00	19.630	146.060	1805.70	-114.75	-310.06	218.37	1.59	
1958.00	20.350	152.180	1894.05	-122.13	-337.62	234.82	2.35	
2052.00	20.470	153.290	1982.15	-127.66	-366.76	249.83	0.43	
2145.00	20.290	154.250	2069.33	-132.56	-395.81	264.15	0.41	
2237.00	20.410	157.520	2155.59	-136.21	-425.00	277.21	1.24	
2331.00	20.510	158.980	2243.66	-138.62	-455.52	289.39	0.55	
2424.00	20.580	159.590	2330.74	-140.43	-486.04	300.93	0.24	
2518.00	20.320	155.970	2418.82	-143.10	-516.44	313.34	1.37	



Actual Wellpath Report

GOETZEL 34C-30-M AWP

Page 3 of 9



REFERENCE WELLPATH IDENTIFICATION

Operator	SRC ENERGY	Slot	SLOT#24 GOETZEL 34C-30-M (2097'FSL & 2053'FWL, SEC.29)
Area	COLORADO	Well	GOETZEL 34C-30-M
Field	WELD COUNTY (NAD83,TRUE NORTH)	Wellbore	GOETZEL 34C-30-M AWB
Facility	SEC.29-T06N-R66W		

WELLPATH DATA (164 stations)

MD [ft]	Inclination [°]	Azimuth [°]	TVD [ft]	Vert Sect [ft]	North [ft]	East [ft]	DLS [°/100ft]	Comments
2610.00	20.590	152.040	2505.02	-147.83	-545.32	327.43	1.52	
2702.00	21.330	141.260	2590.97	-156.81	-572.67	345.49	4.26	
2796.00	20.580	126.800	2678.81	-172.63	-595.91	369.43	5.55	
2889.00	20.210	128.960	2765.98	-191.02	-615.81	395.01	0.90	
2981.00	20.560	137.110	2852.24	-206.71	-637.64	418.37	3.11	
3074.00	20.420	141.070	2939.36	-219.62	-662.22	439.68	1.50	
3167.00	19.980	146.670	3026.65	-229.86	-688.12	458.61	2.13	
3260.00	19.920	158.840	3114.10	-235.18	-716.19	473.06	4.46	
3353.00	20.460	161.380	3201.39	-236.49	-746.36	483.97	1.11	
3447.00	20.420	154.600	3289.48	-239.04	-776.75	496.25	2.52	
3542.00	20.250	147.650	3378.58	-245.51	-805.61	512.16	2.55	
3635.00	20.630	158.210	3465.75	-250.84	-834.43	526.86	3.98	
3728.00	21.190	160.780	3552.63	-252.54	-865.52	538.47	1.16	
3821.00	21.210	147.120	3639.39	-257.49	-895.54	553.15	5.30	
3914.00	21.290	135.470	3726.10	-269.60	-921.71	574.13	4.53	
4009.00	21.110	127.080	3814.69	-287.34	-944.33	599.88	3.20	
4102.00	20.930	124.620	3901.51	-307.22	-963.86	626.91	0.97	
4195.00	20.840	135.520	3988.43	-324.91	-985.11	652.18	4.17	
4289.00	21.080	143.960	4076.23	-337.85	-1010.72	673.85	3.22	
4384.00	20.840	143.140	4164.94	-348.86	-1038.05	694.04	0.40	
4478.00	20.680	145.840	4252.84	-359.14	-1065.17	713.39	1.03	
4572.00	21.010	147.340	4340.69	-368.28	-1093.09	731.80	0.67	
4667.00	20.870	146.130	4429.42	-377.48	-1121.47	750.42	0.48	
4759.00	21.260	146.430	4515.27	-386.69	-1148.98	768.78	0.44	
4854.00	21.150	141.910	4603.84	-397.46	-1176.82	788.88	1.72	
4948.00	21.220	139.960	4691.49	-409.92	-1203.19	810.28	0.75	
5042.00	20.970	142.980	4779.19	-422.04	-1229.65	831.36	1.19	
5136.00	20.960	146.940	4866.98	-432.15	-1257.17	850.66	1.51	
5229.00	20.700	153.790	4953.91	-439.08	-1285.86	866.99	2.63	
5322.00	19.580	159.610	5041.23	-442.33	-1315.22	879.68	2.47	



Actual Wellpath Report

GOETZEL 34C-30-M AWP

Page 4 of 9



REFERENCE WELLPATH IDENTIFICATION

Operator	SRC ENERGY	Slot	SLOT#24 GOETZEL 34C-30-M (2097'FSL & 2053'FWL, SEC.29)
Area	COLORADO	Well	GOETZEL 34C-30-M
Field	WELD COUNTY (NAD83,TRUE NORTH)	Wellbore	GOETZEL 34C-30-M AWB
Facility	SEC.29-T06N-R66W		

WELLPATH DATA (164 stations)

MD [ft]	Inclination [°]	Azimuth [°]	TVD [ft]	Vert Sect [ft]	North [ft]	East [ft]	DLS [°/100ft]	Comments
5416.00	19.920	160.740	5129.70	-443.59	-1345.10	890.45	0.54	
5511.00	19.700	155.210	5219.09	-446.09	-1374.92	902.50	1.99	
5604.00	19.650	147.690	5306.67	-452.06	-1402.37	917.44	2.72	
5697.00	19.940	145.390	5394.18	-460.70	-1428.63	934.80	0.89	
5790.00	19.570	151.510	5481.71	-468.31	-1455.38	951.24	2.26	
5883.00	19.640	153.240	5569.32	-473.77	-1483.02	965.71	0.63	
5977.00	19.720	153.140	5657.83	-478.87	-1511.28	979.99	0.09	
6069.00	20.160	150.160	5744.32	-484.76	-1538.88	994.89	1.20	
6162.00	20.200	145.900	5831.62	-492.75	-1566.07	1011.87	1.58	
6260.00	19.960	142.510	5923.66	-503.28	-1593.36	1031.53	1.21	
6353.00	19.990	143.770	6011.07	-513.78	-1618.78	1050.59	0.46	
6446.00	20.010	146.530	6098.46	-523.24	-1644.87	1068.76	1.02	
6538.00	19.070	149.700	6185.16	-530.88	-1670.98	1085.02	1.54	
6633.00	18.930	149.500	6274.99	-537.76	-1697.66	1100.67	0.16	
6727.00	18.350	152.640	6364.06	-543.71	-1723.94	1115.21	1.23	
6820.00	17.280	169.110	6452.66	-544.60	-1750.52	1124.56	5.52	
6913.00	19.600	197.180	6541.05	-534.10	-1779.05	1122.56	9.77	
7006.00	23.600	228.640	6627.79	-508.08	-1806.35	1103.91	13.00	
7100.00	30.860	242.650	6711.40	-467.02	-1829.92	1068.28	10.26	
7193.00	36.930	247.780	6788.57	-415.61	-1851.46	1021.18	7.21	
7285.00	46.920	248.650	6856.94	-354.38	-1874.21	964.16	10.88	
7377.00	54.090	251.620	6915.42	-283.50	-1898.22	897.41	8.18	
7472.00	62.440	254.370	6965.35	-202.79	-1921.74	820.20	9.13	
7564.00	70.380	256.830	7002.15	-118.69	-1942.64	738.60	8.97	
7657.00	74.520	259.790	7030.19	-30.51	-1960.57	651.79	5.39	
7750.00	79.790	262.150	7050.86	59.12	-1974.78	562.28	6.18	LANDING POINT (110'FSL & 2624'FWL, SEC.29)
7844.00	87.660	268.290	7061.13	150.12	-1982.52	469.28	10.59	
7937.00	90.770	271.600	7062.41	238.79	-1982.60	376.32	4.88	
8032.00	90.150	267.650	7061.65	329.54	-1983.23	281.34	4.21	
8126.00	90.460	265.570	7061.15	420.68	-1988.78	187.51	2.24	



Actual Wellpath Report

GOETZEL 34C-30-M AWP

Page 5 of 9



REFERENCE WELLPATH IDENTIFICATION

Operator	SRC ENERGY	Slot	SLOT#24 GOETZEL 34C-30-M (2097'FSL & 2053'FWL, SEC.29)
Area	COLORADO	Well	GOETZEL 34C-30-M
Field	WELD COUNTY (NAD83,TRUE NORTH)	Wellbore	GOETZEL 34C-30-M AWB
Facility	SEC.29-T06N-R66W		

WELLPATH DATA (164 stations)

MD [ft]	Inclination [°]	Azimuth [°]	TVD [ft]	Vert Sect [ft]	North [ft]	East [ft]	DLS [°/100ft]	Comments
8218.00	90.310	263.790	7060.53	510.59	-1997.31	95.91	1.94	
8310.00	90.310	263.440	7060.03	600.85	-2007.54	4.49	0.38	
8402.00	89.780	264.730	7059.96	690.96	-2017.02	-87.02	1.52	
8495.00	90.090	267.310	7060.06	781.36	-2023.48	-179.79	2.79	
8590.00	90.090	268.750	7059.91	872.87	-2026.74	-274.73	1.52	
8684.00	90.120	267.810	7059.74	963.30	-2029.57	-368.69	1.00	
8776.00	90.120	268.190	7059.55	1051.94	-2032.78	-460.63	0.41	
8870.00	90.150	267.640	7059.33	1142.54	-2036.20	-554.57	0.59	
8963.00	90.000	267.590	7059.21	1232.30	-2040.07	-647.49	0.17	
9056.00	89.660	266.910	7059.48	1322.22	-2044.53	-740.38	0.82	
9149.00	90.180	267.280	7059.61	1412.20	-2049.24	-833.26	0.69	
9243.00	90.030	267.790	7059.44	1502.96	-2053.28	-927.17	0.57	
9337.00	89.940	269.100	7059.46	1593.32	-2055.84	-1021.14	1.40	
9430.00	89.750	269.290	7059.71	1682.38	-2057.14	-1114.13	0.29	
9524.00	88.740	266.850	7060.95	1772.90	-2060.31	-1208.06	2.81	
9617.00	88.430	265.680	7063.25	1863.18	-2066.36	-1300.83	1.30	
9710.00	88.430	265.140	7065.80	1953.78	-2073.80	-1393.50	0.58	
9804.00	89.350	264.400	7067.62	2045.60	-2082.37	-1487.08	1.26	
9898.00	91.080	264.650	7067.27	2137.52	-2091.34	-1580.65	1.86	
9990.00	89.880	264.250	7066.50	2227.50	-2100.23	-1672.21	1.37	
10084.00	90.550	265.600	7066.14	2319.28	-2108.55	-1765.84	1.60	
10179.00	90.460	268.080	7065.31	2411.30	-2113.79	-1860.69	2.61	
10273.00	90.680	269.730	7064.37	2501.44	-2115.58	-1954.66	1.77	
10366.00	90.550	269.430	7063.37	2590.31	-2116.26	-2047.65	0.35	
10458.00	90.580	268.210	7062.47	2678.58	-2118.16	-2139.63	1.33	
10551.00	89.600	266.850	7062.32	2768.38	-2122.17	-2232.54	1.80	
10644.00	89.480	266.030	7063.07	2858.62	-2127.94	-2325.36	0.89	
10736.00	89.450	266.880	7063.92	2947.88	-2133.63	-2417.17	0.92	
10829.00	89.540	268.380	7064.74	3037.63	-2137.47	-2510.09	1.62	
10921.00	90.250	268.720	7064.91	3126.03	-2139.80	-2602.06	0.86	



Actual Wellpath Report

GOETZEL 34C-30-M AWP

Page 6 of 9



REFERENCE WELLPATH IDENTIFICATION

Operator	SRC ENERGY	Slot	SLOT#24 GOETZEL 34C-30-M (2097'FSL & 2053'FWL, SEC.29)
Area	COLORADO	Well	GOETZEL 34C-30-M
Field	WELD COUNTY (NAD83,TRUE NORTH)	Wellbore	GOETZEL 34C-30-M AWB
Facility	SEC.29-T06N-R66W		

WELLPATH DATA (164 stations)

MD [ft]	Inclination [°]	Azimuth [°]	TVD [ft]	Vert Sect [ft]	North [ft]	East [ft]	DLS [°/100ft]	Comments
11016.00	90.280	268.060	7064.47	3217.38	-2142.47	-2697.02	0.70	
11109.00	89.690	266.740	7064.50	3307.23	-2146.69	-2789.92	1.55	
11203.00	89.850	264.980	7064.88	3398.66	-2153.48	-2883.67	1.88	
11295.00	90.090	263.640	7064.92	3488.70	-2162.60	-2975.22	1.48	
11390.00	90.250	262.610	7064.64	3582.06	-2173.97	-3069.53	1.10	
11483.00	90.000	262.910	7064.44	3673.56	-2185.69	-3161.79	0.42	
11577.00	90.180	270.430	7064.29	3764.61	-2191.15	-3255.56	8.00	
11670.00	90.090	265.890	7064.07	3854.12	-2194.13	-3348.49	4.88	
11764.00	90.220	264.930	7063.82	3945.73	-2201.65	-3442.19	1.03	
11860.00	90.150	264.840	7063.51	4039.47	-2210.21	-3537.80	0.12	
11955.00	90.030	267.050	7063.36	4131.85	-2216.93	-3632.56	2.33	
12048.00	89.750	268.240	7063.54	4221.60	-2220.75	-3725.48	1.31	
12143.00	89.880	267.900	7063.84	4313.09	-2223.95	-3820.43	0.38	
12234.00	89.940	271.070	7063.99	4400.09	-2224.77	-3911.41	3.48	
12329.00	89.910	272.420	7064.11	4489.76	-2221.88	-4006.36	1.42	
12423.00	90.520	268.710	7063.76	4579.08	-2220.95	-4100.34	4.00	
12518.00	90.710	268.510	7062.74	4670.33	-2223.25	-4195.31	0.29	
12612.00	90.710	270.180	7061.57	4760.26	-2224.33	-4289.29	1.78	
12707.00	88.800	269.360	7061.98	4850.95	-2224.71	-4384.29	2.19	
12801.00	88.890	268.970	7063.87	4940.97	-2226.08	-4478.26	0.43	
12895.00	88.890	268.540	7065.70	5031.17	-2228.12	-4572.22	0.46	
12990.00	88.280	268.020	7068.04	5122.54	-2230.97	-4667.14	0.84	
13082.00	88.150	268.460	7070.91	5211.03	-2233.79	-4759.06	0.50	
13176.00	88.180	267.760	7073.92	5301.50	-2236.89	-4852.96	0.74	
13269.00	88.150	267.710	7076.90	5391.17	-2240.57	-4945.83	0.06	
13363.00	88.550	268.160	7079.60	5481.72	-2243.95	-5039.73	0.64	
13456.00	88.430	267.170	7082.05	5571.43	-2247.74	-5132.62	1.07	
13549.00	88.270	264.640	7084.73	5661.84	-2254.38	-5225.34	2.72	
13642.00	87.170	265.800	7088.43	5752.46	-2262.12	-5317.94	1.72	
13735.00	89.080	267.960	7091.47	5842.47	-2267.18	-5410.74	3.10	



Actual Wellpath Report

GOETZEL 34C-30-M AWP

Page 7 of 9



REFERENCE WELLPATH IDENTIFICATION

Operator	SRC ENERGY	Slot	SLOT#24 GOETZEL 34C-30-M (2097'FSL & 2053'FWL, SEC.29)
Area	COLORADO	Well	GOETZEL 34C-30-M
Field	WELD COUNTY (NAD83,TRUE NORTH)	Wellbore	GOETZEL 34C-30-M AWB
Facility	SEC.29-T06N-R66W		

WELLPATH DATA (164 stations)

MD [ft]	Inclination [°]	Azimuth [°]	TVD [ft]	Vert Sect [ft]	North [ft]	East [ft]	DLS [°/100ft]	Comments
13829.00	90.680	270.740	7091.67	5932.41	-2268.25	-5504.72	3.41	
13923.00	90.620	265.400	7090.60	6022.90	-2271.41	-5598.63	5.68	
14015.00	90.580	271.430	7089.64	6111.31	-2273.95	-5690.55	6.55	
14204.00	91.050	274.540	7086.95	6288.27	-2264.11	-5879.25	1.66	
14391.00	90.740	280.500	7084.03	6457.56	-2239.65	-6064.53	3.19	
14577.00	90.310	273.580	7082.32	6626.59	-2216.87	-6249.01	3.73	
14764.00	90.580	265.500	7080.87	6805.19	-2218.37	-6435.85	4.32	
14950.00	90.580	258.690	7078.98	6988.44	-2243.94	-6619.96	3.66	
15134.00	90.400	251.790	7077.40	7172.11	-2290.79	-6797.77	3.75	
15322.00	90.280	259.300	7076.29	7359.70	-2337.68	-6979.69	4.00	
15510.00	90.340	266.530	7075.27	7544.45	-2360.85	-7166.13	3.85	
15603.00	90.220	267.680	7074.81	7634.42	-2365.55	-7259.01	1.24	
15681.00	90.340	265.960	7074.43	7709.98	-2369.88	-7336.88	2.21	LAST BHGE MWD SURVEY (72'FSL & 546'FWL, SEC.30)
15705.00	90.340	265.960	7074.29	7733.32	-2371.57	-7360.82	0.00	PROJECTION TO BIT (70'FSL & 522'FWL, SEC.30)

HOLE & CASING SECTIONS - Ref Wellbore: GOETZEL 34C-30-M AWB Ref Wellpath: GOETZEL 34C-30-M AWP

String/Diameter	Start MD [ft]	End MD [ft]	Interval [ft]	Start TVD [ft]	End TVD [ft]	Start N/S [ft]	Start E/W [ft]	End N/S [ft]	End E/W [ft]
13.5in Open Hole	20.00	1817.00	1797.00	20.00	1761.51	0.00	0.00	-296.87	209.30
9.625in Casing Surface	20.00	1817.00	1797.00	20.00	1761.51	0.00	0.00	-296.87	209.30
8.5in Open Hole	1817.00	15705.00	13888.00	1761.51	7074.29	-296.87	209.30	-2371.57	-7360.82



Actual Wellpath Report

GOETZEL 34C-30-M AWP
Page 8 of 9



REFERENCE WELLPATH IDENTIFICATION

Operator	SRC ENERGY	Slot	SLOT#24 GOETZEL 34C-30-M (2097'FSL & 2053'FWL, SEC.29)
Area	COLORADO	Well	GOETZEL 34C-30-M
Field	WELD COUNTY (NAD83,TRUE NORTH)	Wellbore	GOETZEL 34C-30-M AWB
Facility	SEC.29-T06N-R66W		

TARGETS

Name	TVD [ft]	North [ft]	East [ft]	Grid East [US ft]	Grid North [US ft]	Latitude	Longitude	Shape
SEC.29-T06N-R66W NORTHERN	4.00	1402.61	823.15	3194449.66	1411671.99	40°27'40.817"N	104°48'04.259"W	polygon
SEC.29-T06N-R66W SOUTHERN	4.00	1402.61	823.15	3194449.66	1411671.99	40°27'40.817"N	104°48'04.259"W	polygon
SEC.30-T06N-R66W NORTHERN	4.00	1402.61	823.15	3194449.66	1411671.99	40°27'40.817"N	104°48'04.259"W	polygon
SEC.30-T06N-R66W SOUTHERN	4.00	1402.61	823.15	3194449.66	1411671.99	40°27'40.817"N	104°48'04.259"W	polygon
GOETZEL 34C-30-M BHL REV-1 ON PLAT (111'FSL & 510'FWL SEC.30)	7055.00	-2330.90	-7373.27	3186283.11	1407874.42	40°27'03.913"N	104°49'50.282"W	circle
GOETZEL 34C-30-M TOP OF PROD (108'FSL & 2570'FWL SEC.29)	7055.00	-1976.43	508.22	3194161.27	1408290.71	40°27'07.427"N	104°48'08.334"W	circle
GOETZEL 34C-30-M TOP OF PROD REV-2 (108'FSL & 2570'FWL, SEC.29)	7063.34	-1976.43	508.22	3194161.27	1408290.71	40°27'07.427"N	104°48'08.334"W	circle
GOETZEL 34C-30-M BHL REV-2 (111'FSL & 510'FWL, SEC.30)	7079.61	-2330.90	-7373.27	3186283.11	1407874.42	40°27'03.913"N	104°49'50.282"W	circle

WELLPATH COMPOSITION - Ref Wellbore: GOETZEL 34C-30-M AWB Ref Wellpath: GOETZEL 34C-30-M AWP

Start MD [ft]	End MD [ft]	Positional Uncertainty Model	Log Name/Comment	Wellbore
20.00	1773.00	Custom BHI NaviTrak (Standard Rotating+Axial Corr) (Rockies 0.03Gt model)	13 1/2" APS EM SURVEYS <133'-1773'>	GOETZEL 34C-30-M AWB
1773.00	15681.00	BHI AutoTrak Curve (IFR1, Short)	13 1/2" APS EM SURVEYS <1833'-15681'>	GOETZEL 34C-30-M AWB
15681.00	15705.00	Blind Drilling (std)	Projection to bit	GOETZEL 34C-30-M AWB



SRC ENERGY

Actual Wellpath Report

GOETZEL 34C-30-M AWP

Page 9 of 9



**BAKER
HUGHES**

REFERENCE WELLPATH IDENTIFICATION

Operator	SRC ENERGY	Slot	SLOT#24 GOETZEL 34C-30-M (2097'FSL & 2053'FWL, SEC.29)
Area	COLORADO	Well	GOETZEL 34C-30-M
Field	WELD COUNTY (NAD83,TRUE NORTH)	Wellbore	GOETZEL 34C-30-M AWB
Facility	SEC.29-T06N-R66W		

WELLPATH COMMENTS

MD [ft]	Inclination [°]	Azimuth [°]	TVD [ft]	Comment
7750.00	79.790	262.150	7050.86	LANDING POINT (110'FSL & 2624'FWL, SEC.29)
15681.00	90.340	265.960	7074.43	LAST BHGE MWD SURVEY (72'FSL & 546'FWL, SEC.30)
15705.00	90.340	265.960	7074.29	PROJECTION TO BIT (70'FSL & 522'FWL, SEC.30)