

HALLIBURTON

iCem[®] Service

SRC ENERGY INC-EBUS

Date: Thursday, November 16, 2017

Goetzel 34C-30-M Production

Job Date: Wednesday, November 08, 2017

Sincerely,

Justin Lansdale

Legal Notice

Warning Disclaimer

Although the information contained in this report is based on sound engineering practices, the copyright owner(s) does (do) not accept any responsibility whatsoever, in negligence or otherwise, for any loss or damage arising from the possession or use of the report whether in terms of correctness or otherwise. The application, therefore, by the user of this report or any part thereof, is solely at the user's own risk.

Limitations of Liability

Except as expressly set forth herein, there are no representations or warranties by Halliburton, express or implied, including implied warranties of merchantability and/or fitness for a particular purpose. In no event will Halliburton or its suppliers be liable for consequential, incidental, special, punitive or exemplary damages (including, without limitation, loss of data, profits, use of hardware, or software). Customer accepts full responsibility for any investment made based on results from the Software. Any interpretations, analyses or modeling of any data, including, but not limited to Customer data, and any recommendation or decisions based upon such interpretations, analyses or modeling are opinions based upon inferences from measurements and empirical relationships and assumptions, which inferences and assumptions are not infallible, and with respect to which professional may differ. Accordingly, Halliburton cannot and does not warrant the accuracy, correctness or completeness of any such interpretation, recommendation, modeling or other products of the Software Product. As such, any interpretation, recommendation or modeling resulting from the Software for the purpose of any drilling, well treatment, production or financial decision will be at the sole risk of Customer. Under no circumstances will Halliburton or its suppliers be liable for any damages.

Table of Contents

1.0 Cementing Job Summary 4

 1.1 Executive Summary4

2.0 Real-Time Job Summary 7

 2.1 Job Event Log7

3.0 Attachments..... 10

 3.1 Job Chart.....10

1.0 Cementing Job Summary

1.1 Executive Summary

Halliburton appreciates the opportunity to perform the cementing services on the **Goetzel 34C-30-M** cement **Production** casing job. A pre-job safety meeting was held before the job where details of the job were discussed, potential safety hazards were reviewed, and environmental compliance procedures were outlined.

Halliburton maintains a continuous quality improvement process and appreciates any comments or suggestions that you may have. Halliburton again thanks you for the opportunity to perform service work on this well. We hope to be your solutions provider for future projects.

Respectfully,

Halliburton [Fort Lupton]

The Road to Excellence Starts with Safety

Sold To #: 359915		Ship To #: 3781624		Quote #:		Sales Order #: 0904418347				
Customer: SYNERGY RESOURCES CORPORATION				Customer Rep: Lovel Young						
Well Name: GOETZEL			Well #: 34C-30-M		API/UWI #: 05-123-44184-00					
Field: WATTENBERG		City (SAP): GREELEY		County/Parish: WELD		State: COLORADO				
Legal Description: NE SW-29-6N-66W-2097FSL-2053FWL										
Contractor:				Rig/Platform Name/Num: Precision 462						
Job BOM: 7523 7523										
Well Type: HORIZONTAL OIL										
Sales Person: HALAMERICA\HB41307				Srv Supervisor: Bryan Kraft						
Job										
Formation Name										
Formation Depth (MD)		Top		Bottom						
Form Type				BHST						
Job depth MD		15697ft		Job Depth TVD		7080ft				
Water Depth				Wk Ht Above Floor		4ft				
Perforation Depth (MD)		From		To						
Well Data										
Description	New / Used	Size in	ID in	Weight lbm/ft	Thread	Grade	Top MD ft	Bottom MD ft	Top TVD ft	Bottom TVD ft
Casing		9.625	8.921	36	LTC	J-55	0	1818	0	1818
Casing		5.5	4.778	20		P-110	0	15697	0	7080
Open Hole Section			8.5				1818	15705	1818	7080
Tools and Accessories										
Type	Size in	Qty	Make	Depth ft		Type	Size in	Qty	Make	
Guide Shoe						Top Plug	5.5	1	WF	
Float Shoe	5.5	1	WF	15697		Bottom Plug	5.5	1	WF	
Float Collar	5.5		WF	15587		SSR plug set				
Insert Float						Plug Container	5.5	1	HES	
Stage Tool						Centralizers				
Fluid Data										
Stage/Plug #: 1										
Fluid #	Stage Type	Fluid Name	Qty	Qty UoM	Mixing Density lbm/gal	Yield ft3/sack	Mix Fluid Gal	Rate bbl/min	Total Mix Fluid Gal	
1	Spacer	TUNED SPACER III	40	bbl	11.5	3.8	23.8	4	1407	
35.10 gal/bbl		FRESH WATER								
0.50 gal/bbl		DUAL SPACER SURFACTANT B, 5 GAL PAIL (100003665)								
0.50 gal/bbl		MUSOL A, 330 GAL TOTE - (790828)								

147.42 lbm/bbl		BARITE, BULK (100003681)							
Fluid #	Stage Type	Fluid Name	Qty	Qty UoM	Mixing Density lbm/gal	Yield ft3/sack	Mix Fluid Gal	Rate bbl/min	Total Mix Fluid Gal
2	Lead	ELASTICEM (TM) SYSTEM	1062	sack	13.2	1.57	7.54	8	8007
7.54 Gal		FRESH WATER							
Fluid #	Stage Type	Fluid Name	Qty	Qty UoM	Mixing Density lbm/gal	Yield ft3/sack	Mix Fluid Gal	Rate bbl/min	Total Mix Fluid Gal
3	Tail	NEOCEM TM	1062	sack	13.2	2.04	9.75	8	10355
9.77 Gal		FRESH WATER							
0.08 %		SCR-100 (100003749)							
Fluid #	Stage Type	Fluid Name	Qty	Qty UoM	Mixing Density lbm/gal	Yield ft3/sack	Mix Fluid Gal	Rate bbl/min	Total Mix Fluid Gal
4	Displacement	FRESH WATER	346	bbl	8.34			6	14532
0.50 gal/bbl		MICRO MATRIX CEMENT RETARDER, 5 GAL PAIL (100003781)							
Cement Left In Pipe		Amount	0 ft			Reason		Wet Shoe Joint	
Mix Water:		pH 7	Mix Water Chloride:			<300 ppm		Mix Water Temperature:	
								80 °F	
Cement Temperature:		N/A	Plug Displaced by:			8.3 lb/gal Fresh Water		Disp. Temperature:	
								40 °F	
Plug Bumped?		Yes	Bump Pressure:			2623 psi		Floats Held?	
								Yes	
Cement Returns:		35 bbl	Returns Density:			N/A		Returns Temperature:	
								N/A	
Comment The plug bumped @ calculated displacement @ 2623 PSI, the sleeve opened @ 4750 PSI, pumped a 6 BBL wet shoe. The floats held and received 2.5 BBLS back to the truck. Cement returned to surface @ 311 BBLS into displacement. Total of 35 BBLS of cement to surface.									

2.0 Real-Time Job Summary

2.1 Job Event Log

Type	Seq. No.	Activity	Graph Label	Date	Time	Source	Comments
Event	1	Call Out	Call Out	11/8/2017	06:00:00	USER	CREW CALLED OUT AT 6:00 11/8/2017, REQUESTED ON LOCATION 10:00 11/8/2017. CREW PICKED UP CEMENT, CHEMICALS (20 GAL MUSOL A, 20 GAL DUAL SPACER B, 10 GAL D-AIR, 20 GAL CLA-WEB, 5 GAL MICROMATRIX), 200 LBS OF SUGAR, AND PLUG CONTAINER FROM FORT LUPTON, CO. BULK 660: 11689672, 11566182, PUMP ELITE 11897034/11645460..
Event	2	Pre-Convoy Safety Meeting	Pre-Convoy Safety Meeting	11/8/2017	08:45:00	USER	DISCUSSED ROUTES, HAZARDS, AND COMMUNICATION WITH CREW.
Event	3	Crew Leave Yard	Crew Leave Yard	11/8/2017	09:00:00	USER	STARTED JOURNEY MANAGEMENT.
Event	4	Arrive At Loc	Arrive At Loc	11/8/2017	10:00:00	USER	E
Event	5	Pre-Rig Up Safety Meeting	Pre-Rig Up Safety Meeting	11/8/2017	10:15:00	USER	HAZARD HUNT. DISCUSSED POSSIBLE HAZARDS ASSOCIATED WITH LOCATION, RIG UP AND WEATHER.
Event	6	Rig-Up Equipment	Rig-Up Equipment	11/8/2017	10:20:00	USER	CREW STAGED EQUIPMENT AND RIGGED UP BULK, IRON, AND WATER HOSES TO PERFORM JOB.
Event	7	Pre-Job Safety Meeting	Pre-Job Safety Meeting	11/8/2017	12:30:00	USER	MEETING WITH HALLIBURTON AND RIG PERSONNEL. COMMUNICATED POTENTIAL SAFETY HAZARDS AND JOB DETAILS.
Event	8	Start Job	Start Job	11/8/2017	12:52:27	COM5	BEGIN RECORDING JOB DATA.
Event	9	Test Lines	Test Lines	11/8/2017	12:55:13	USER	PRESSURE TESTED IRON TO 4500 PSI. KICKOUTS SET @ 500 PSI, KICKED OUT @ 487 PSI, 5TH GEAR STALL OUT @ 1493 PSI.
Event	10	Pump Spacer	Pump Tuned Spacer @ 11.5 ppg	11/8/2017	13:06:33	USER	PUMP 40 BBLS OF TUNED SPACER @ 11.5 LB/GAL, 3.8 YIELD, 23.8 GAL/SKS, ADDED 20 GAL MUSOL A, 20 GAL DUAL SPACER B,

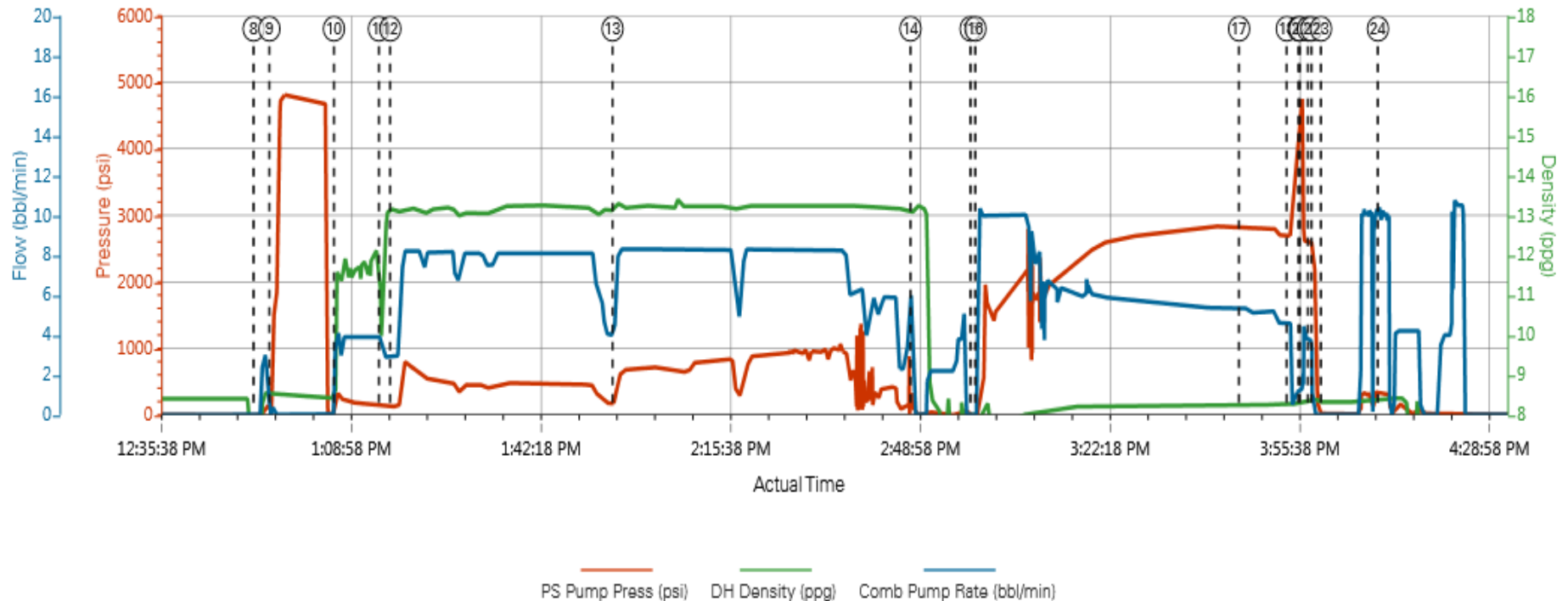
							10 GAL D-AIR, DENSITY VERIFIED BY PRESSURIZED MUD SCALES.
Event	11	Drop Bottom Plug	Drop Bottom Plug	11/8/2017	13:14:27	USER	PLUG LEFT CONTAINER.
Event	12	Pump Lead Cement	Pump Lead Cement @ 13.2 ppg	11/8/2017	13:16:27	USER	PUMP 1062 SKS OF ELASTICEM @ 13.2 LB/GAL, 1.57 YIELD, 7.54 GAL/SK, 297 BBLS, CALCULATED TOT @ SURFACE, DENSITY VERIFIED BY PRESSURIZED MUD SCALES.
Event	13	Pump Tail Cement	Pump Tail Cement @ 13.2 ppg	11/8/2017	13:55:30	USER	PUMP 1062 SKS OF NEOCEM @ 13.2 LB/GAL, 2.04 YIELD, 9.75 GAL/SK, 386 BBLS, CALCULATED TOT @ 6297', DENSITY VERIFIED BY PRESSURIZED MUD SCALES.
Event	14	Shutdown	Shutdown	11/8/2017	14:47:52	USER	SHUTDOWN TO WASH PUMPS AND LINES / DROP TOP PLUG.
Event	15	Drop Top Plug	Drop Top Plug	11/8/2017	14:58:25	USER	DROP TOP PLUG, VERIFIED BY COMPANY MAN.
Event	16	Pump Displacement	Pump Fresh Water Displacement	11/8/2017	14:59:16	USER	BEGIN CALCULATED DISPLACEMENT OF 346 BBLS WITH FRESH WATER. FIRST 10 BBLS WITH MICROMATRIX, CLA-WEB, AND BIOCID, REST OF DISPLACEMENT WITH CLA-WEB AND BIOCID.
Event	17	Cement Returns to Surface	Cement Returns to Surface	11/8/2017	15:45:36	USER	CEMENT RETURNS TO SURFACE @ 311 BBLS INTO DISPLACEMENT. TOTAL OF 35 BBLS CEMENT TO SURFACE.
Event	18	Bump Plug	Bump Plug	11/8/2017	15:53:59	USER	PLUG BUMPED AT CALCULATED DISPLACEMENT. FINAL CIRCULATING PRESSURE OF 2623 PSI.
Event	19	Pressure Up	Open Sleeve	11/8/2017	15:56:03	USER	SLEEVE OPENED @ 4750 PSI.
Event	20	Pump Displacement	Pump Wet Shoe	11/8/2017	15:56:17	USER	PUMP 6 BBLS FRESH WATER FOR WET SHOE.
Event	21	Shutdown	Shutdown	11/8/2017	15:57:43	USER	SHUTDOWN FOR 1 MINUTE.
Event	22	Check Floats	Check Floats	11/8/2017	15:58:19	USER	RELEASED PRESSURE, FLOATS HELD, 2.5 BBLS BACK.
Event	23	End Job	End Job	11/8/2017	16:00:00	COM5	STOP RECORDING JOB DATA.

Event	24	Pre-Rig Down Safety Meeting	Pre-Rig Down Safety Meeting	11/8/2017	16:10:00	USER	DISCUSSED POSSIBLE HAZARDS ASSOCIATED WITH WEATHER, LOCATION AND RIGGING DOWN IRON AND HOSES.
Event	25	Rig-Down Completed	Rig-Down Completed	11/8/2017	18:30:00	USER	ALL HALLIBURTON ITEMS WERE STOWED FOR TRAVEL, AND LOCATION WAS CLEAN.
Event	26	Pre-Convoy Safety Meeting	Pre-Convoy Safety Meeting	11/8/2017	18:55:00	USER	DISCUSSED ROUTES HAZARDS AND COMMUNICATION WITH CREW.
Event	27	Crew Leave Location	Crew Leave Location	11/8/2017	19:00:00	USER	THANK YOU FOR USING HALLIBURTON - BRYAN KRAFT AND CREW.

3.0 Attachments

3.1 Job Chart

Custom Results



① Call Out n/a;n/a;n/a ③ Crew Leave Yard n/a;n/a;n/a ⑤ Pre-Rig Up Safety Meeting n/a;n/a;n/a ⑦ Pre-Job Safety Meeting 5;8.4;0 ⑨ Test Lines 1555;8.49;0.2 ⑪ Drop Br
② Pre-Convoy Safety Meeting n/a;n/a;n/a ④ Arrive At Loc n/a;n/a;n/a ⑥ Rig-Up Equipment n/a;n/a;n/a ⑧ Start Job -6;0.15;0 ⑩ Pump Tuned Spacer @ 11.5 ppg 327;11.63;4.1 ⑫ Pump L

