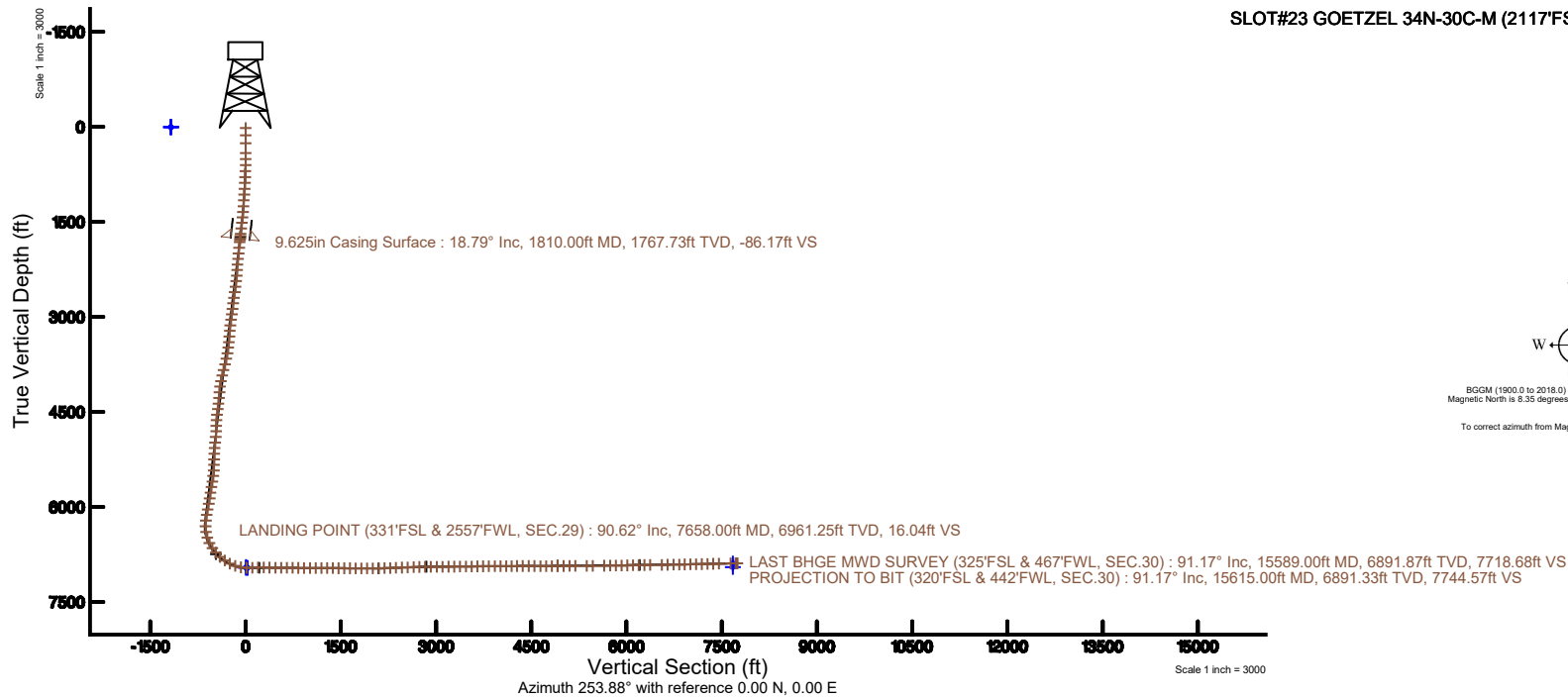
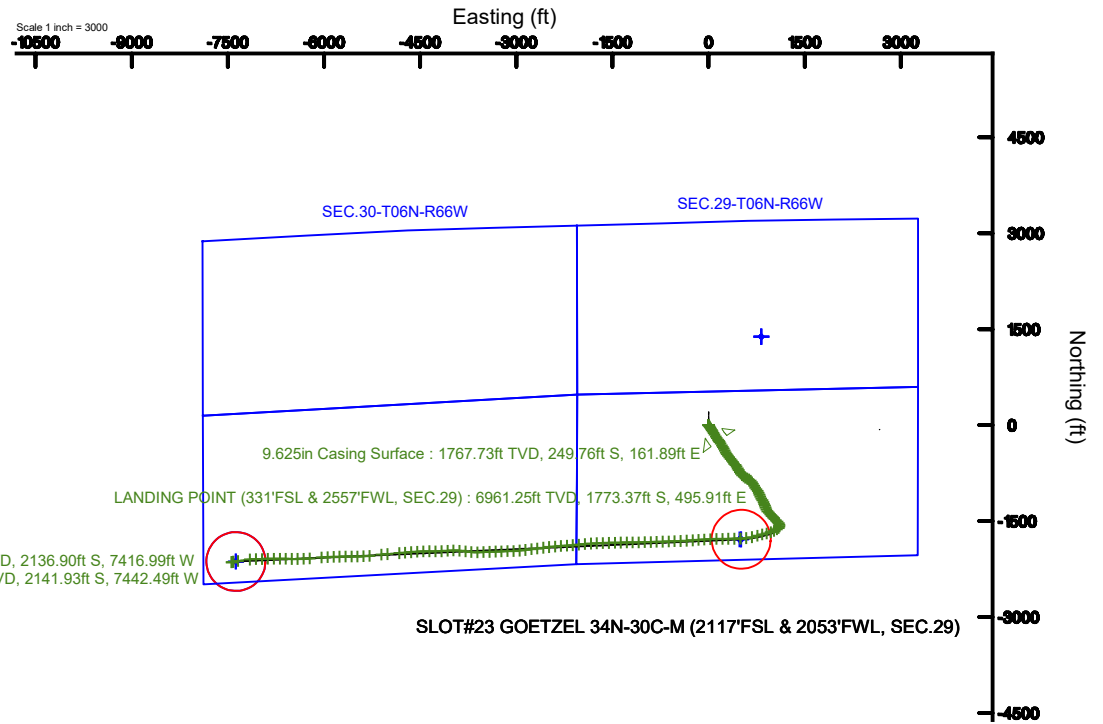


SRC ENERGY

Location: COLORADO Slot: SLOT#23 GOETZEL 34N-30C-M (2117'FSL & 2053'FWL, SEC.29)
 Field: WELD COUNTY (NAD83, TRUE NORTH) Well: GOETZEL 34N-30C-M
 Facility: SEC.29-T06N-R66W Wellbore: GOETZEL 34N-30C-M PWB

Plot reference wellpath is GOETZEL 34N-30C-M (REV-C.0) PWB	Grid System: NAD83 / Lambert Colorado SP, Northern Zone (501), US feet
True vertical depths are referenced to PRECISION 462 (20') (RKB)	* = Wellpath was transformed from a different geodetic datum
Measured depths are referenced to PRECISION 462 (20') (RKB)	North Reference: True north
PRECISION 462 (20') (RKB) to Mean Sea Level: 4752 feet	Scale: True distance
Mean Sea Level to Mud line (At Slot: SLOT#23 GOETZEL 34N-30C-M (2117'FSL & 2053'FWL, SEC.29)): 0 feet	Depths are in feet
Coordinates are in feet referenced to Slot	Created by: doddanna on 2018-01-10
	Database: WellArchitectDB





Actual Wellpath Report

GOETZEL 34N-30C-M AWP

Page 1 of 9



REFERENCE WELLPATH IDENTIFICATION

Operator	SRC ENERGY	Slot	SLOT#23 GOETZEL 34N-30C-M (2117'FSL & 2053'FWL, SEC.29)
Area	COLORADO	Well	GOETZEL 34N-30C-M
Field	WELD COUNTY (NAD83,TRUE NORTH)	Wellbore	GOETZEL 34N-30C-M AWB
Facility	SEC.29-T06N-R66W		

REPORT SETUP INFORMATION

Projection System	NAD83 / Lambert Colorado SP, Northern Zone (501), US feet	Software System	WellArchitect® 5.0
North Reference	True	User	Doddanna
Scale	0.999963	Report Generated	1/10/2018 at 11:45:57 AM
Convergence at slot	0.45° East	Database/Source file	WellArchitectDB/GOETZEL_34N-30C-M_AWP.xml

WELLPATH LOCATION

	Local coordinates		Grid coordinates		Geographic coordinates	
	North[ft]	East[ft]	Easting[US ft]	Northing[US ft]	Latitude	Longitude
Slot Location	-1382.56	-822.87	3193637.73	1410283.05	40°27'27.155"N	104°48'14.904"W
Facility Reference Pt			3194449.65	1411672.01	40°27'40.817"N	104°48'04.259"W
Field Reference Pt			3171284.48	1426358.81	40°30'07.643"N	104°53'02.634"W

WELLPATH DATUM

Calculation method	Minimum curvature	PRECISION 462 (20') (RKB) to Facility Vertical Datum	4752.00ft
Horizontal Reference Pt	Slot	PRECISION 462 (20') (RKB) to Mean Sea Level	4752.00ft
Vertical Reference Pt	PRECISION 462 (20') (RKB)	PRECISION 462 (20') (RKB) to Mud Line at Slot (SLOT#23 GOETZEL 34N-30C-M (2117'FSL & 2053'FWL, SEC.29))	4752.00ft
MD Reference Pt	PRECISION 462 (20') (RKB)	Section Origin	N 0.00, E 0.00 ft
Field Vertical Reference	Mean Sea Level	Section Azimuth	253.88°



Actual Wellpath Report

GOETZEL 34N-30C-M AWP

Page 2 of 9



REFERENCE WELLPATH IDENTIFICATION

Operator	SRC ENERGY	Slot	SLOT#23 GOETZEL 34N-30C-M (2117'FSL & 2053'FWL, SEC.29)
Area	COLORADO	Well	GOETZEL 34N-30C-M
Field	WELD COUNTY (NAD83,TRUE NORTH)	Wellbore	GOETZEL 34N-30C-M AWB
Facility	SEC.29-T06N-R66W		

WELLPATH DATA (166 stations) † = interpolated/extrapolated station

MD [ft]	Inclination [°]	Azimuth [°]	TVD [ft]	Vert Sect [ft]	North [ft]	East [ft]	DLS [°/100ft]	Comments
0.00†	0.000	217.020	0.00	0.00	0.00	0.00	0.00	
20.00	0.000	217.020	20.00	0.00	0.00	0.00	0.00	
133.00	0.210	217.020	133.00	0.17	-0.17	-0.12	0.19	
259.00	0.240	340.900	259.00	0.36	-0.10	-0.35	0.32	
416.00	0.310	279.450	416.00	0.76	0.28	-0.88	0.18	
510.00	0.910	151.000	509.99	0.83	-0.33	-0.77	1.20	
605.00	3.270	150.240	604.92	0.02	-3.34	0.95	2.48	
698.00	5.450	141.980	697.65	-2.25	-9.13	4.98	2.43	
793.00	7.380	144.050	792.05	-6.00	-17.62	11.34	2.05	
886.00	8.990	144.610	884.10	-10.43	-28.38	19.06	1.73	
980.00	10.840	146.930	976.69	-15.43	-41.78	28.14	2.01	
1073.00	12.790	146.490	1067.72	-21.06	-57.69	38.59	2.10	
1168.00	14.330	148.970	1160.07	-27.22	-76.53	50.46	1.73	
1263.00	15.950	149.710	1251.77	-33.44	-97.88	63.10	1.72	
1358.00	18.780	149.320	1342.43	-40.48	-122.31	77.49	2.98	
1450.00	20.720	147.330	1429.01	-48.84	-148.74	93.84	2.23	
1543.00	20.950	147.990	1515.93	-58.08	-176.69	111.53	0.35	
1635.00	19.490	145.310	1602.26	-67.47	-203.26	128.98	1.88	
1728.00	18.860	144.840	1690.10	-77.31	-228.31	146.47	0.70	
1763.00	18.780	143.860	1723.23	-81.09	-237.48	153.05	0.93	
1835.00	18.790	145.070	1791.40	-88.79	-256.35	166.53	0.54	
1866.00	18.800	146.370	1820.74	-91.90	-264.60	172.15	1.35	
1960.00	19.700	146.910	1909.49	-101.08	-290.49	189.19	0.98	
2053.00	19.910	146.090	1996.99	-110.50	-316.76	206.58	0.37	
2145.00	19.170	148.680	2083.69	-119.24	-342.67	223.17	1.24	
2239.00	19.800	151.250	2172.31	-126.77	-369.81	238.85	1.13	
2332.00	19.750	154.640	2259.83	-132.73	-397.82	253.16	1.23	
2425.00	19.910	153.210	2347.31	-138.19	-426.15	267.03	0.55	
2520.00	19.830	144.570	2436.68	-146.51	-453.73	283.66	3.09	
2612.00	19.880	140.270	2523.21	-157.94	-478.47	302.71	1.59	



Actual Wellpath Report

GOETZEL 34N-30C-M AWP

Page 3 of 9



REFERENCE WELLPATH IDENTIFICATION

Operator	SRC ENERGY	Slot	SLOT#23 GOETZEL 34N-30C-M (2117'FSL & 2053'FWL, SEC.29)
Area	COLORADO	Well	GOETZEL 34N-30C-M
Field	WELD COUNTY (NAD83,TRUE NORTH)	Wellbore	GOETZEL 34N-30C-M AWB
Facility	SEC.29-T06N-R66W		

WELLPATH DATA (166 stations)

MD [ft]	Inclination [°]	Azimuth [°]	TVD [ft]	Vert Sect [ft]	North [ft]	East [ft]	DLS [°/100ft]	Comments
2704.00	19.990	140.200	2609.70	-170.51	-502.59	322.77	0.12	
2797.00	19.820	138.770	2697.14	-183.59	-526.66	343.34	0.55	
2890.00	19.720	144.880	2784.67	-195.39	-551.35	362.76	2.22	
2983.00	19.880	146.840	2872.17	-205.13	-577.42	380.44	0.73	
3075.00	19.760	140.230	2958.73	-215.95	-602.47	398.94	2.44	
3168.00	19.160	136.800	3046.42	-229.20	-625.68	419.45	1.39	
3261.00	19.790	145.910	3134.12	-241.01	-649.85	438.72	3.33	
3354.00	19.730	150.870	3221.65	-249.40	-676.60	455.19	1.80	
3449.00	19.820	153.520	3311.05	-255.91	-705.03	470.18	0.95	
3543.00	19.710	145.980	3399.53	-263.64	-732.44	486.15	2.71	
3636.00	19.850	143.900	3487.04	-273.86	-758.19	504.23	0.77	
3729.00	20.080	139.390	3574.46	-285.87	-783.07	523.93	1.67	
3822.00	19.830	124.350	3661.93	-302.54	-804.11	547.36	5.51	
3915.00	19.940	119.190	3749.40	-323.73	-820.74	574.23	1.89	
4010.00	19.790	117.220	3838.74	-346.82	-836.00	602.67	0.72	
4103.00	19.530	121.040	3926.33	-368.84	-851.22	629.99	1.41	
4196.00	19.600	133.480	4014.00	-387.31	-869.97	654.64	4.47	
4290.00	19.740	143.240	4102.53	-400.89	-893.55	675.59	3.49	
4385.00	19.860	149.220	4191.93	-410.63	-920.27	693.45	2.14	
4479.00	21.000	150.290	4280.01	-418.62	-948.61	709.97	1.28	
4573.00	20.800	145.730	4367.83	-427.78	-977.04	727.71	1.74	
4668.00	20.780	143.940	4456.65	-438.78	-1004.60	747.13	0.67	
4761.00	19.370	143.550	4544.00	-449.76	-1030.34	766.01	1.52	
4854.00	19.640	154.750	4631.69	-457.60	-1056.89	781.84	4.03	
4948.00	20.730	160.980	4719.93	-460.95	-1086.91	794.00	2.56	
5041.00	20.750	157.220	4806.90	-463.69	-1117.67	805.75	1.43	
5135.00	20.400	148.610	4894.93	-469.94	-1147.01	820.73	3.24	
5230.00	20.330	144.800	4983.99	-479.69	-1174.63	838.87	1.40	
5323.00	20.130	154.270	5071.28	-487.65	-1202.26	855.13	3.52	
5417.00	19.340	157.900	5159.76	-491.97	-1231.25	868.01	1.55	



SRC ENERGY

Actual Wellpath Report

GOETZEL 34N-30C-M AWP

Page 4 of 9

**BAKER
HUGHES****REFERENCE WELLPATH IDENTIFICATION**

Operator	SRC ENERGY	Slot	SLOT#23 GOETZEL 34N-30C-M (2117'FSL & 2053'FWL, SEC.29)
Area	COLORADO	Well	GOETZEL 34N-30C-M
Field	WELD COUNTY (NAD83,TRUE NORTH)	Wellbore	GOETZEL 34N-30C-M AWB
Facility	SEC.29-T06N-R66W		

WELLPATH DATA (166 stations)

MD [ft]	Inclination [°]	Azimuth [°]	TVD [ft]	Vert Sect [ft]	North [ft]	East [ft]	DLS [°/100ft]	Comments
5512.00	19.200	160.400	5249.44	-494.55	-1260.54	879.17	0.88	
5605.00	20.110	162.650	5337.02	-495.82	-1290.21	889.07	1.27	
5698.00	20.260	150.270	5424.35	-499.96	-1319.47	901.83	4.59	
5791.00	20.100	142.650	5511.66	-509.53	-1346.16	919.51	2.83	
5884.00	20.080	135.270	5599.01	-522.96	-1370.21	940.45	2.72	
5979.00	20.050	137.150	5688.25	-538.10	-1393.73	963.00	0.68	
6074.00	19.530	140.220	5777.64	-551.79	-1417.87	984.23	1.22	
6168.00	20.130	137.130	5866.07	-565.38	-1441.81	1005.29	1.28	
6260.00	20.140	133.730	5952.45	-580.46	-1464.36	1027.51	1.27	
6355.00	20.140	131.760	6041.64	-597.37	-1486.56	1051.53	0.71	
6447.00	19.740	136.370	6128.13	-612.97	-1508.35	1074.06	1.76	
6540.00	18.670	143.660	6215.97	-625.37	-1531.71	1093.72	2.82	
6635.00	16.790	164.640	6306.54	-630.44	-1557.22	1106.38	6.97	
6728.00	17.180	191.510	6395.62	-623.89	-1583.67	1107.20	8.38	
6821.00	19.190	227.470	6484.25	-603.76	-1607.54	1093.15	12.07	
6915.00	26.550	237.740	6570.83	-569.68	-1629.24	1063.95	8.88	
7007.00	34.840	242.340	6649.89	-524.10	-1652.45	1023.21	9.36	
7101.00	42.290	251.470	6723.39	-466.06	-1675.02	969.32	9.96	
7194.00	46.660	257.370	6789.77	-400.99	-1692.37	906.60	6.46	
7286.00	55.400	256.150	6847.57	-329.62	-1708.78	837.05	9.56	
7379.00	63.360	253.760	6894.91	-249.67	-1729.61	759.85	8.84	
7473.00	71.470	256.990	6930.99	-163.00	-1751.43	675.94	9.19	
7566.00	80.110	263.520	6953.82	-73.55	-1766.57	587.21	11.51	
7658.00	90.620	267.930	6961.25	16.04	-1773.37	495.91	12.38	LANDING POINT (331'FSL & 2557'FWL, SEC.29)
7751.00	91.140	269.150	6959.82	106.00	-1775.73	402.95	1.43	
7845.00	91.320	269.740	6957.80	196.53	-1776.65	308.98	0.66	
7938.00	89.260	269.000	6957.33	286.14	-1777.67	215.99	2.35	
8033.00	89.260	268.930	6958.56	377.86	-1779.38	121.02	0.07	
8127.00	89.200	267.840	6959.82	468.85	-1782.03	27.06	1.16	
8219.00	89.170	265.840	6961.13	558.50	-1787.10	-64.78	2.17	



Actual Wellpath Report

GOETZEL 34N-30C-M AWP

Page 5 of 9



REFERENCE WELLPATH IDENTIFICATION

Operator	SRC ENERGY	Slot	SLOT#23 GOETZEL 34N-30C-M (2117'FSL & 2053'FWL, SEC.29)
Area	COLORADO	Well	GOETZEL 34N-30C-M
Field	WELD COUNTY (NAD83,TRUE NORTH)	Wellbore	GOETZEL 34N-30C-M AWB
Facility	SEC.29-T06N-R66W		

WELLPATH DATA (166 stations)

MD [ft]	Inclination [°]	Azimuth [°]	TVD [ft]	Vert Sect [ft]	North [ft]	East [ft]	DLS [°/100ft]	Comments
8312.00	89.480	265.600	6962.22	649.51	-1794.04	-157.52	0.42	
8404.00	89.480	266.100	6963.06	739.50	-1800.70	-249.27	0.54	
8496.00	89.480	266.670	6963.89	829.32	-1806.50	-341.08	0.62	
8591.00	89.380	267.400	6964.84	921.82	-1811.42	-435.95	0.78	
8685.00	89.540	267.990	6965.72	1013.09	-1815.20	-529.87	0.65	
8778.00	89.600	268.030	6966.42	1103.28	-1818.42	-622.81	0.08	
8871.00	89.720	267.850	6966.97	1193.49	-1821.77	-715.75	0.23	
8965.00	89.630	268.270	6967.51	1284.62	-1824.95	-809.69	0.46	
9057.00	89.720	268.260	6968.03	1373.73	-1827.74	-901.65	0.10	
9151.00	89.720	268.590	6968.49	1464.72	-1830.32	-995.61	0.35	
9244.00	89.780	268.930	6968.89	1554.60	-1832.33	-1088.59	0.37	
9339.00	89.750	269.270	6969.28	1646.26	-1833.82	-1183.58	0.36	
9432.00	89.570	269.180	6969.84	1735.95	-1835.08	-1276.57	0.22	
9525.00	89.570	269.100	6970.53	1825.66	-1836.48	-1369.55	0.09	
9618.00	89.570	268.550	6971.23	1915.51	-1838.38	-1462.53	0.59	
9711.00	89.780	268.500	6971.76	2005.49	-1840.78	-1555.50	0.23	
9805.00	91.480	268.400	6970.73	2096.46	-1843.32	-1649.46	1.81	
9899.00	92.000	267.670	6967.87	2187.56	-1846.54	-1743.36	0.95	
9992.00	91.910	266.540	6964.70	2278.04	-1851.24	-1836.18	1.22	
10086.00	92.030	265.160	6961.47	2369.94	-1858.03	-1929.88	1.47	
10181.00	91.750	263.900	6958.33	2463.25	-1867.09	-2024.39	1.36	
10274.00	91.780	264.000	6955.47	2554.77	-1876.88	-2116.83	0.11	
10367.00	92.950	267.030	6951.63	2645.77	-1884.15	-2209.45	3.49	
10461.00	90.890	265.580	6948.48	2737.51	-1890.20	-2303.20	2.68	
10553.00	90.400	265.410	6947.45	2827.62	-1897.43	-2394.91	0.56	
10646.00	90.180	264.010	6946.97	2918.96	-1906.00	-2487.51	1.52	
10739.00	90.740	263.150	6946.23	3010.62	-1916.40	-2579.92	1.10	
10831.00	90.580	262.800	6945.17	3101.46	-1927.65	-2671.22	0.42	
10926.00	90.740	262.690	6944.07	3195.32	-1939.65	-2765.46	0.20	
11019.00	90.490	263.090	6943.08	3287.16	-1951.16	-2857.74	0.51	



Actual Wellpath Report

GOETZEL 34N-30C-M AWP

Page 6 of 9



REFERENCE WELLPATH IDENTIFICATION

Operator	SRC ENERGY	Slot	SLOT#23 GOETZEL 34N-30C-M (2117'FSL & 2053'FWL, SEC.29)
Area	COLORADO	Well	GOETZEL 34N-30C-M
Field	WELD COUNTY (NAD83,TRUE NORTH)	Wellbore	GOETZEL 34N-30C-M AWB
Facility	SEC.29-T06N-R66W		

WELLPATH DATA (166 stations)

MD [ft]	Inclination [°]	Azimuth [°]	TVD [ft]	Vert Sect [ft]	North [ft]	East [ft]	DLS [°/100ft]	Comments
11112.00	90.710	264.760	6942.10	3378.73	-1961.00	-2950.21	1.81	
11205.00	90.550	267.650	6941.08	3469.57	-1967.16	-3042.99	3.11	
11299.00	90.710	268.810	6940.05	3560.63	-1970.06	-3136.93	1.25	
11393.00	90.550	268.460	6939.01	3651.52	-1972.30	-3230.90	0.41	
11487.00	90.550	266.070	6938.11	3742.96	-1976.78	-3324.78	2.54	
11580.00	90.280	268.540	6937.44	3833.40	-1981.15	-3417.67	2.67	
11674.00	90.340	267.860	6936.93	3924.48	-1984.11	-3511.62	0.73	
11768.00	90.490	268.330	6936.25	4015.60	-1987.23	-3605.57	0.52	
11862.00	90.460	275.130	6935.47	4105.02	-1984.40	-3699.47	7.23	
11956.00	90.430	278.910	6934.74	4191.43	-1972.91	-3792.74	4.02	
12050.00	90.460	274.250	6934.01	4278.12	-1962.14	-3886.09	4.96	
12144.00	90.460	267.960	6933.25	4367.86	-1960.33	-3980.03	6.69	
12238.00	89.600	266.080	6933.20	4459.39	-1965.22	-4073.89	2.20	
12332.00	89.450	267.020	6933.98	4551.10	-1970.87	-4167.72	1.01	
12427.00	89.510	270.450	6934.84	4642.91	-1972.97	-4262.68	3.61	
12522.00	90.250	270.900	6935.04	4733.85	-1971.85	-4357.67	0.91	
12616.00	90.340	267.670	6934.56	4824.46	-1973.02	-4451.65	3.44	
12711.00	90.310	265.530	6934.02	4917.12	-1978.66	-4546.48	2.25	
12805.00	90.430	265.470	6933.41	5009.19	-1986.03	-4640.18	0.14	
12900.00	90.460	265.440	6932.67	5102.25	-1993.56	-4734.88	0.04	
12992.00	90.370	265.480	6932.01	5192.38	-2000.84	-4826.59	0.11	
13178.00	90.280	265.060	6930.95	5374.71	-2016.18	-5011.95	0.23	
13273.00	90.340	264.630	6930.44	5467.97	-2024.72	-5106.57	0.46	
13458.00	90.650	264.550	6928.84	5649.74	-2042.16	-5290.74	0.17	
13552.00	90.920	265.880	6927.55	5741.90	-2050.00	-5384.40	1.44	
13645.00	90.740	269.380	6926.20	5832.21	-2053.84	-5477.30	3.77	
13739.00	90.710	269.940	6925.01	5922.66	-2054.40	-5571.29	0.60	
13832.00	90.740	269.200	6923.84	6012.18	-2055.10	-5664.27	0.80	
13925.00	90.770	268.900	6922.61	6101.93	-2056.64	-5757.25	0.32	
14019.00	90.800	267.960	6921.32	6192.91	-2059.21	-5851.21	1.00	



Actual Wellpath Report

GOETZEL 34N-30C-M AWP

Page 7 of 9



REFERENCE WELLPATH IDENTIFICATION

Operator	SRC ENERGY	Slot	SLOT#23 GOETZEL 34N-30C-M (2117'FSL & 2053'FWL, SEC.29)
Area	COLORADO	Well	GOETZEL 34N-30C-M
Field	WELD COUNTY (NAD83,TRUE NORTH)	Wellbore	GOETZEL 34N-30C-M AWB
Facility	SEC.29-T06N-R66W		

WELLPATH DATA (166 stations)

MD [ft]	Inclination [°]	Azimuth [°]	TVD [ft]	Vert Sect [ft]	North [ft]	East [ft]	DLS [°/100ft]	Comments
14113.00	91.600	266.870	6919.36	6284.27	-2063.45	-5945.09	1.44	
14206.00	90.740	265.490	6917.46	6375.12	-2069.65	-6037.86	1.75	
14394.00	90.740	265.830	6915.03	6559.14	-2083.87	-6225.31	0.18	
14487.00	90.620	267.880	6913.93	6649.75	-2088.97	-6318.15	2.21	
14580.00	90.770	269.090	6912.80	6739.74	-2091.43	-6411.11	1.31	
14674.00	91.170	270.560	6911.21	6830.11	-2091.72	-6505.10	1.62	
14766.00	91.200	271.190	6909.30	6918.07	-2090.32	-6597.07	0.69	
14859.00	91.260	270.780	6907.31	7006.93	-2088.72	-6690.03	0.45	
14952.00	91.230	270.390	6905.29	7095.99	-2087.77	-6783.00	0.42	
15044.00	91.230	267.780	6903.31	7184.74	-2089.24	-6874.96	2.84	
15138.00	91.260	268.810	6901.27	7275.75	-2092.03	-6968.90	1.10	
15232.00	91.290	267.280	6899.18	7366.87	-2095.24	-7062.82	1.63	
15324.00	91.110	265.350	6897.25	7456.69	-2101.15	-7154.60	2.11	
15512.00	91.200	261.020	6893.46	7642.13	-2123.45	-7341.19	2.30	
15589.00	91.170	258.850	6891.87	7718.68	-2136.90	-7416.99	2.82	LAST BHGE MWD SURVEY (325'FSL & 467'FWL, SEC.30)
15615.00	91.170	258.850	6891.33	7744.57	-2141.93	-7442.49	0.00	PROJECTION TO BIT (320'FSL & 442'FWL, SEC.30)

HOLE & CASING SECTIONS - Ref Wellbore: GOETZEL 34N-30C-M AWB Ref Wellpath: GOETZEL 34N-30C-M AWP

String/Diameter	Start MD [ft]	End MD [ft]	Interval [ft]	Start TVD [ft]	End TVD [ft]	Start N/S [ft]	Start E/W [ft]	End N/S [ft]	End E/W [ft]
13.5in Open Hole	20.00	1810.00	1790.00	20.00	1767.73	0.00	0.00	-249.76	161.89
9.625in Casing Surface	20.00	1810.00	1790.00	20.00	1767.73	0.00	0.00	-249.76	161.89
8.5in Open Hole	1810.00	15615.00	13805.00	1767.73	6891.33	-249.76	161.89	-2141.93	-7442.49



Actual Wellpath Report

GOETZEL 34N-30C-M AWP

Page 8 of 9



REFERENCE WELLPATH IDENTIFICATION

Operator	SRC ENERGY	Slot	SLOT#23 GOETZEL 34N-30C-M (2117'FSL & 2053'FWL, SEC.29)
Area	COLORADO	Well	GOETZEL 34N-30C-M
Field	WELD COUNTY (NAD83, TRUE NORTH)	Wellbore	GOETZEL 34N-30C-M AWB
Facility	SEC.29-T06N-R66W		

TARGETS

Name	TVD [ft]	North [ft]	East [ft]	Grid East [US ft]	Grid North [US ft]	Latitude	Longitude	Shape
SEC.29-T06N-R66W NORTHERN	4.00	1382.57	822.84	3194449.66	1411671.99	40°27'40.817"N	104°48'04.259"W	polygon
SEC.29-T06N-R66W SOUTHERN	4.00	1382.57	822.84	3194449.66	1411671.99	40°27'40.817"N	104°48'04.259"W	polygon
SEC.30-T06N-R66W NORTHERN	4.00	1382.57	822.84	3194449.66	1411671.99	40°27'40.817"N	104°48'04.259"W	polygon
SEC.30-T06N-R66W SOUTHERN	4.00	1382.57	822.84	3194449.66	1411671.99	40°27'40.817"N	104°48'04.259"W	polygon
GOETZEL 34N-30C-M BHL REV-2 (330'FSL & 510'FWL, SEC.30)	6892.27	-2131.62	-7374.35	3186280.62	1408093.72	40°27'06.080"N	104°49'50.293"W	circle
GOETZEL 34N-30C-M BHL REV-1 ON PLAT (330'FSL & 510'FWL SEC.30)	6950.00	-2131.62	-7374.35	3186280.62	1408093.72	40°27'06.080"N	104°49'50.293"W	circle
GOETZEL 34N-30C-M TOP OF PROD REV-1 (319'FSL & 2570'FWL SEC.29)	6950.00	-1785.16	509.30	3194161.00	1408502.01	40°27'09.515"N	104°48'08.316"W	circle
GOETZEL 34N-30C-M TOP OF PROD REV-2 (319'FSL & 2570'FWL, SEC.29)	6963.30	-1785.16	509.30	3194161.00	1408502.01	40°27'09.515"N	104°48'08.316"W	circle
GOETZEL 34N-30C-M TOP OF PROD REV-3 (319'FSL & 2545'FWL, SEC.29)	6963.30	-1785.16	484.30	3194136.00	1408501.82	40°27'09.515"N	104°48'08.639"W	circle

WELLPATH COMPOSITION - Ref Wellbore: GOETZEL 34N-30C-M AWB Ref Wellpath: GOETZEL 34N-30C-M AWP

Start MD [ft]	End MD [ft]	Positional Uncertainty Model	Log Name/Comment	Wellbore
20.00	1763.00	Custom BHI NaviTrak (Standard Rotating+Axial Corr) (Rockies 0.03Gt model)	13 1/2" APS EM SURVEYS <133'-1763'>	GOETZEL 34N-30C-M AWB
1763.00	15589.00	BHI AutoTrak Curve (IFR1, Short)	ATC SURVEYS <1835'-15589'>	GOETZEL 34N-30C-M AWB
15589.00	15615.00	Blind Drilling (std)	Projection to bit	GOETZEL 34N-30C-M AWB



SRC ENERGY

Actual Wellpath Report

GOETZEL 34N-30C-M AWP

Page 9 of 9



**BAKER
HUGHES**

REFERENCE WELLPATH IDENTIFICATION

Operator	SRC ENERGY	Slot	SLOT#23 GOETZEL 34N-30C-M (2117'FSL & 2053'FWL, SEC.29)
Area	COLORADO	Well	GOETZEL 34N-30C-M
Field	WELD COUNTY (NAD83,TRUE NORTH)	Wellbore	GOETZEL 34N-30C-M AWB
Facility	SEC.29-T06N-R66W		

WELLPATH COMMENTS

MD [ft]	Inclination [°]	Azimuth [°]	TVD [ft]	Comment
7658.00	90.620	267.930	6961.25	LANDING POINT (331'FSL & 2557'FWL, SEC.29)
15589.00	91.170	258.850	6891.87	LAST BHGE MWD SURVEY (325'FSL & 467'FWL, SEC.30)
15615.00	91.170	258.850	6891.33	PROJECTION TO BIT (320'FSL & 442'FWL, SEC.30)