

HALLIBURTON

iCem[®] Service

SRC ENERGY INC-EBUS

Date: Thursday, November 16, 2017

Goetzel 34N-30C-M PRODUCTION

Job Date: Monday, November 13, 2017

Sincerely,

Julia Nichols

Legal Notice

Disclaimer:

All information in this report is provided subject to the terms and conditions which govern the services provided by Halliburton. Halliburton personnel use their best efforts in gathering information and their best judgment in interpreting it, but any interpretation, research, analysis or recommendation furnished by Halliburton are opinions based upon inferences from measurements and empirical relationships and assumptions, which inferences and empirical relationships and assumptions are not infallible, and with respect to which professionals in the industry may differ. Accordingly, HALLIBURTON IS UNABLE TO GUARANTEE THE ACCURACY OF ANY CHART INTERPRETATION, RESEARCH ANALYSIS, OR JOB RECOMMENDATION and any interpretation or recommendation is not for use of or reliance upon by any third party. The customer has full responsibility for any of its decisions which are based on the information provided in this report.

Table of Contents

1.0 Cementing Job Summary 4

 1.1 Executive Summary4

2.0 Real-Time Job Summary 7

 2.1 Job Event Log7

3.0 Attachments..... 9

 3.1 Custom Results – Job Chart with Events9

 3.2 Custom Results – Job Chart without Events.....10

1.0 Cementing Job Summary

1.1 Executive Summary

Halliburton appreciates the opportunity to perform the cementing services on the **GOETZEL 34N-30C-M** cement **PRODUCTION** casing job. A pre-job safety meeting was held before the job where details of the job were discussed, potential safety hazards were reviewed, and environmental compliance procedures were outlined.

Approximately 15 barrels of cement were returned to surface.

Halliburton maintains a continuous quality improvement process and appreciates any comments or suggestions that you may have. Halliburton again thanks you for the opportunity to perform service work on this well. We hope to be your solutions provider for future projects.

Respectfully,

Halliburton [Fort Lupton]

HALLIBURTON

Cementing Job Summary

The Road to Excellence Starts with Safety

Sold To #: 359915		Ship To #: 3781681		Quote #:		Sales Order #: 0904428249				
Customer: SYNERGY RESOURCES CORPORATION				Customer Rep: Lovel Young						
Well Name: GOETZEL		Well #: 34N-30C-M		API/UWI #: 05-123-44190-00						
Field: WATTENBERG	City (SAP): GREELEY	County/Parish: WELD		State: COLORADO						
Legal Description: NE SW-29-8N-88W-2117FSL-2053FWL										
Contractor:				Rig/Platform Name/Num: Precision 462						
Job BOM: 7523 7523										
Well Type: HORIZONTAL OIL										
Sales Person: HALAMERICA\HB41307				Srv Supervisor: Nicholas Roles						
Job										
Formation Name										
Formation Depth (MD)		Top			Bottom					
Form Type				BHST						
Job depth MD		15597ft		Job Depth TVD						
Water Depth				Wk Ht Above Floor						
Perforation Depth (MD)		From			To					
Well Data										
Description	New / Used	Size in	ID in	Weight lbm/ft	Thread	Grade	Top MD ft	Bottom MD ft	Top TVD ft	Bottom TVD ft
Casing		9.625	8.921	36	LTC	J-55	0	1767	0	1767
Casing		5.5	4.778	20		P-110	0	15597	0	6892
Open Hole Section			8.5				1767	15615	1767	6892
Tools and Accessories										
Type	Size in	Qty	Make	Depth ft		Type	Size in	Qty	Make	
Guide Shoe	5.5					Top Plug	5.5		HES	
Float Shoe	5.5			15597		Bottom Plug	5.5		HES	
Float Collar	5.5					SSR plug set	5.5		HES	
Insert Float	5.5					Plug Container	5.5	1	HES	
Stage Tool	5.5					Centralizers	5.5		HES	
Fluid Data										
Stage/Plug #: 1										
Fluid #	Stage Type	Fluid Name	Qty	Qty UoM	Mixing Density lbm/gal	Yield ft ³ /sack	Mix Fluid Gal	Rate bbl/min	Total Mix Fluid Gal	
1	Tuned Spacer III	Tuned Spacer III	40	bbl	11.5	3.8		5		
35.10 gal/bbl		FRESH WATER								
0.50 gal/bbl		DUAL SPACER SURFACTANT B, 5 GAL PAIL (100003685)								
0.50 gal/bbl		MUSOL A, 330 GAL TOTE - (790828)								
147.42 lbm/bbl		BARITE, BULK (100003681)								

Cementing Job Summary

Fluid #	Stage Type	Fluid Name	Qty	Qty UoM	Mixing Density lbm/gal	Yield ft3/sack	Mix Fluid Gal	Rate bbl/min	Total Mix Fluid Gal
2	ElastiCem Lead	ELASTICEM (TM) SYSTEM	1024	sack	13.2	1.57		8	7.54
7.54 Gal		FRESH WATER							
Fluid #	Stage Type	Fluid Name	Qty	Qty UoM	Mixing Density lbm/gal	Yield ft3/sack	Mix Fluid Gal	Rate bbl/min	Total Mix Fluid Gal
3	NeoCem Tail	NeoCem TM	1041	sack	13.2	2.04		8	9.77
9.77 Gal		FRESH WATER							
0.08 %		SCR-100 (100003749)							
Fluid #	Stage Type	Fluid Name	Qty	Qty UoM	Mixing Density lbm/gal	Yield ft3/sack	Mix Fluid Gal	Rate bbl/min	Total Mix Fluid Gal
4	MMCR Displacement	MMCR Displacement	20	bbl	8.34			10	
0.50 gal/bbl		MICRO MATRIX CEMENT RETARDER, 5 GAL PAIL (100003781)							
Fluid #	Stage Type	Fluid Name	Qty	Qty UoM	Mixing Density lbm/gal	Yield ft3/sack	Mix Fluid Gal	Rate bbl/min	Total Mix Fluid Gal
5	Cla Web Displacement	Cla Web Displacement	324	bbl	8.33			10	
1 gal/bbl		CLA-WEB - TOTE (101985045)							
Cement Left In Pipe		Amount	0 ft		Reason			Wet Shoe	
Comment 15 bbls of Cement back to Surface. Estimated TOT 6185'									

2.0 Real-Time Job Summary

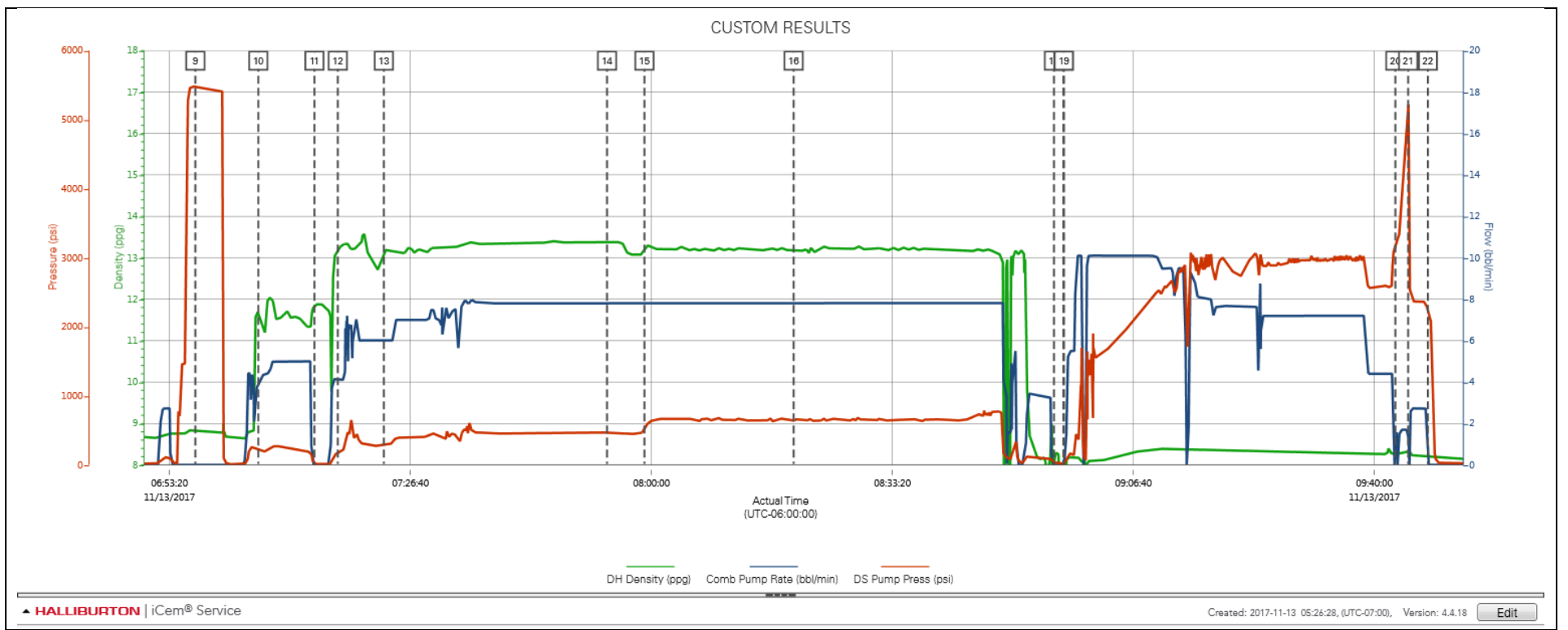
2.1 Job Event Log

Type	Seq. No.	Activity	Graph Label	Date	Time	Source	DH Density (ppg)	Comb Pump Rate (bbl/min)	DS Pump Press (psi)	Comments
Event	1	Call Out	Call Out	11/12/2017	23:00:00	USER				Called out by Service Coordinator for O/L at 0500
Event	2	Depart Yard Safety Meeting	Depart Yard Safety Meeting	11/13/2017	03:15:00	USER				Held meeting with all personnel in convoy to discuss directions and hazards associated with drive, all fit to drive.
Event	3	Depart from Service Center or Other Site	Depart from Service Center or Other Site	11/13/2017	03:30:00	USER				Journey Management prior to departure
Event	4	Arrive at Location from Service Center	Arrive at Location from Service Center	11/13/2017	04:30:00	USER				Upon arrival met with company man to discuss job details and calculations, performed hazard hunt and site assessment.
Event	5	Pre-Rig Up Safety Meeting	Pre-Rig Up Safety Meeting	11/13/2017	04:45:00	USER				Discussed rigging up hazards and procedure according to HMS.
Event	6	Other	Other	11/13/2017	05:00:00	USER				Water test- PH-6, Chlor-0, Temp-65. Cement temp-70.
Event	7	Pre-Job Safety Meeting	Pre-Job Safety Meeting	11/13/2017	06:30:00	USER	8.57	0.00	2.00	Held safety meeting with all job associated personnel to discuss job procedure, hazards and stop work authority.
Event	8	Start Job	Start Job	11/13/2017	06:45:33	COM4	7.04	0.00	0.00	T
Event	9	Test Lines	Test Lines	11/13/2017	06:56:55	COM4	8.83	0.00	5475.00	Pumped 5bbls fresh water to fill lines, closed manifold and performed 500psi k/o function test, proceeded to perform 5th gear stall at 1450psi, continued to bring pressure up to 5500psi. Pressure stabilized and held with no leaks
Event	10	Pump Spacer 1	Pump Spacer 1	11/13/2017	07:05:37	COM4	11.70	3.80	221.00	Pumped 40bbls 11.5# 3.8y 23.8g/s Tuned Spacer III with 20g Musol A, 20g Dual Spacer B and 10g D-Air
Event	11	Pump Lead Cement	Pump Lead Cement	11/13/2017	07:13:23	COM4	11.86	0.00	19.00	Pumped 1024sks or 286bbls 13.2# 1.57y 7.54g/s Elasticem at 8bpm 450psi.
Event	12	Drop Bottom Plug	Drop Bottom Plug	11/13/2017	07:16:37	COM4	13.18	4.20	170.00	Dropped by HES supervisor, witnessed by company man.

Event	13	Check Weight	Check weight	11/13/2017	07:22:59	COM4	13.20	6.00	305.00	Weight verified with pressurized mud scales.
Event	14	Check Weight	Check weight	11/13/2017	07:53:51	COM4	13.37	7.80	471.00	Weight verified with pressurized mud scales.
Event	15	Pump Tail Cement	Pump Tail Cement	11/13/2017	07:59:01	COM4	13.22	7.80	534.00	Pumped 1041sks or 378bbbls 13.2# 2.04y 9.77g/s Neocem at 8bpm 540psi.
Event	16	Check Weight	Check weight	11/13/2017	08:19:40	COM4	13.20	7.80	654.00	Weight verified with pressurized mud scales.
Event	17	Shutdown	Shutdown	11/13/2017	08:55:40	COM4	8.16	0.00	37.00	Pumped 5bbbls fresh water to clean through pumps and lines.
Event	18	Drop Top Plug	Drop Top Plug	11/13/2017	08:56:59	COM4	8.10	0.00	12.00	Dropped by HES supervisor, witnessed by company man.
Event	19	Pump Displacement	Pump Displacement	11/13/2017	08:57:03	COM4	8.16	0.00	12.00	Pumped 344bbbls fresh water with 5g MMCR in first 20bbbls, 20g biocide throughout.
Event	20	Bump Plug	Bump Plug	11/13/2017	09:42:54	COM4	8.26	0.00	3151.00	Slowed down to 4.5bpm at 320bbbls away, final circulating pressure-2640psi, bump pressure-3180psi.
Event	21	Pressure Up Well	Pressure Up Well	11/13/2017	09:44:40	USER	8.32	1.70	5230.00	Pumped fresh water to sheer at _5250psi, continued to pump 6bbbls fresh water at 3bpm 2023psi.
Event	22	Other	Other	11/13/2017	09:47:23	USER	8.21	0.00	2211.00	Released pressure and got 2bbbls back to pump. Floats held.
Event	23	End Job	End Job	11/13/2017	09:55:15	COM4				1
Event	24	Pre-Rig Down Safety Meeting	Pre-Rig Down Safety Meeting	11/13/2017	10:05:00	USER	-0.34	0.00	22.00	Discussed rigging down hazards and procedure according to HMS.
Event	25	Depart Location Safety Meeting	Depart Location Safety Meeting	11/13/2017	11:30:00	USER				Held meeting with all personnel in convoy to discuss directions and hazards associated with drive, all fit to drive.
Event	26	Depart Location for Service Center or Other Site	Depart Location for Service Center or Other Site	11/13/2017	11:45:00	USER				Pre journey management prior to departure.

3.0 Attachments

3.1 Custom Results – Job Chart with Events



3.2 Custom Results – Job Chart without Events

