



410 17th Street, Suite 1400  
Denver, CO 80202  
(720) 440-6100 phone  
(720) 305-0804 fax

[Bonanzacrk.com](http://Bonanzacrk.com)

May 8, 2018

State of Colorado  
Oil and Gas Conservation Commission  
1120 Lincoln Street, Suite 801  
Denver, CO 80203

**RE: Proposed Wellbore Spacing Unit**  
State Antelope J14-2-14XRLNB  
Niobrara New Drill  
SWSW Section 2, Township 5N, Range 62W, 6<sup>th</sup> PM  
Weld County, Colorado

Dear Director Murphy,

Bonanza Creek Energy Operating Company, LLC. ("Bonanza Creek") is planning to drill the above captioned well in accordance with the provisions of Colorado Oil and Gas Conservation Commission (COGCC) Rule 318A.e.

Bonanza Creek's proposed wellbore spacing unit consists of:

Township 5N, Range 62W (Weld County):  
Section 2: S2SW  
Section 11: W2  
Section 14: W2

Total acres: 720ac

The 30 day notification time period has passed and we have not yet received any objections to such well locations or proposed spacing unit, therefore Bonanza Creek hereby requests the Director to approve the above mentioned well. Bonanza Creek respectfully requests the COGCC review the enclosed map illustrating the proposed wellbore spacing unit.

Regards,  
Bonanza Creek Energy Operating Company, LLC.

Brian Dodek, P.G.  
Manager – Environmental & Regulatory Compliance

NOTE: UNDER COLORADO LAW, YOU MUST COMMENCE ANY LEGAL ACTION BASED ON ANY DEFECT IN THIS CERTIFICATE WITHIN THREE YEARS AFTER DEFECT IS DISCOVERED. IN NO EVENT MAY ANY ACTION BASED UPON ANY DEFECT IN THIS SURVEY BE COMMENCED MORE THAN TEN YEARS AFTER DATE OF THIS CERTIFICATE SHOWN HEREON. (13-80105 C.R.S.)

3.25" AC LS7242  
LAT 40.4367306°N  
LONG -104.3000439°W

N87° 04' 10.30"E

5328.045'

2.5" AC PLS32828  
LAT 40.437279°N  
LONG -104.2809164°W

N0° 51' 05.21"W  
5380.830'

N1° 25' 46.18"W  
5305.848'

T.5N. R.62W  
2

3.25" AC LS7242  
LAT 40.4219602°N  
LONG -104.3000182°W

811  
SURFACE LOCATION

S34° 19' 16.24"E  
497.430'

TARGET  
330' FSL  
1085' FWL

S86° 18' 05.58"W  
2692.383'

3.25" AC PLS38018  
LAT 40.4223367°N  
LONG -104.2903605°W

S86° 16' 42.36"W  
2692.384'

3.25" AC PLS7735  
LAT 40.4227154°N  
LONG -104.2807029°W

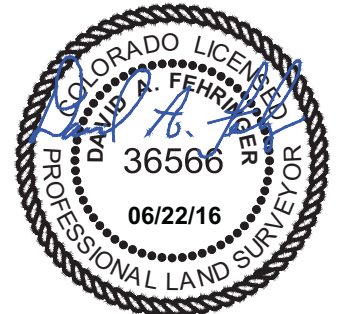
#### NOTES:

- ALL BEARINGS ARE GRID BASED UPON THE COLORADO STATE PLANE COORDINATE SYSTEM, NORTH ZONE, NAD83(2011) DERIVED FROM POST-PROCESSED STATIC GPS OBSERVATIONS.
- DISTANCES ARE ON GRID
- VERTICAL DATUM IS NAVD88 BASED UPON GPS OBSERVATIONS
- PDOP VALUE EQUALS 1.6.
- GPS OPERATOR: MARC MAYER.
- GROUND ELEVATION AT WELLHEAD = 4623.64'
- ALL SECTION LENGTHS ARE MEASURED DISTANCES UNLESS NOTED BY (R), RECORD BEARING AND DISTANCE.
- NEAREST CULTURAL DISTANCES  
BUILDINGS: 5280' +/-  
BUILDING UNIT: 5280' +/-  
HIGH OCCUPANCY BUILDING UNIT: 5280'+  
DESIGNATED OUTSIDE ACTIVITY AREA: 5280'+  
PUBLIC ROAD: 5280'+  
ABOVE GROUND UTILITY: 407' +/-  
RAILROAD: 5280'+  
PROPERTY LINE: 811' +/-

5	NAD 83		STATE PLANE COORDINATES	
J14-2-14XRLNB	LATITUDE	LONGITUDE	NORTHING	EASTING
SURFACE	40.4241572	-104.2971102	1399632.26	3334887.61
TARGET 1	40.4230192	-104.2961230	1399221.44	3335168.07
MID LATERAL	40.4074269	-104.2961147	1393541.76	3335247.49
BOTTOM HOLE	40.3940283	-104.2958514	1388662.14	3335387.10

#### CERTIFICATE OF SURVEYOR:

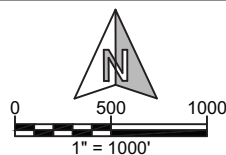
I, DAVID A. FEHRINGER OF LANDER, WYOMING HEREBY CERTIFY THAT THIS WELL LOCATION CERTIFICATE WAS PREPARED FROM NOTES TAKEN DURING AN ACTUAL SURVEY ON JUNE 03, 2016; AND THAT IT CORRECTLY SHOWS THE DRILLING LOCATION OF BONANZA CREEK ENERGY, INC. STATE ANTELOPE J14-2-14XRLNB AS STAKED DURING SAID SURVEY. THIS MAP DOES NOT REPRESENT A BOUNDARY SURVEY OR AN IMPROVEMENT LOCATION PLAT AND SHOULD NOT BE USED FOR THE ESTABLISHMENT OF BOUNDARY LINES.



PAD CORNERS	NAD 83	
SA 14-2 PAD	LATITUDE	LONGITUDE
NW	40.4248119	-104.2977952
NE	40.4243171	-104.2956531
SE	40.4232373	-104.2956674
SW	40.4232007	-104.2978115



**WILLIAM H. SMITH & ASSOCIATES, Inc.**  
155 N. 1st Street  
Lander, WY 82520  
Phone: 307-335-5646



Drawn By: MAM  
Job No.: 15043  
Checked By: DAF  
Date: 06/22/16  
Revision: Wells 1-5 location change 12/04/17 MAM

IF BAR LENGTH DOES NOT EQUAL 1"(ONE INCH), THIS PAGE WAS NOT PLOTTED TO THE INTENDED SCALE.

#### LOCATION CERTIFICATE

STATE ANTELOPE  
J14-2-14XRLNB  
SURFACE  
SW $\frac{1}{4}$  SW $\frac{1}{4}$ , SECTION 2,  
T.5N., R.62W., 6th PM  
WELD COUNTY, COLORADO



410 17th Street  
Denver, CO 80202  
(720) 440-6100

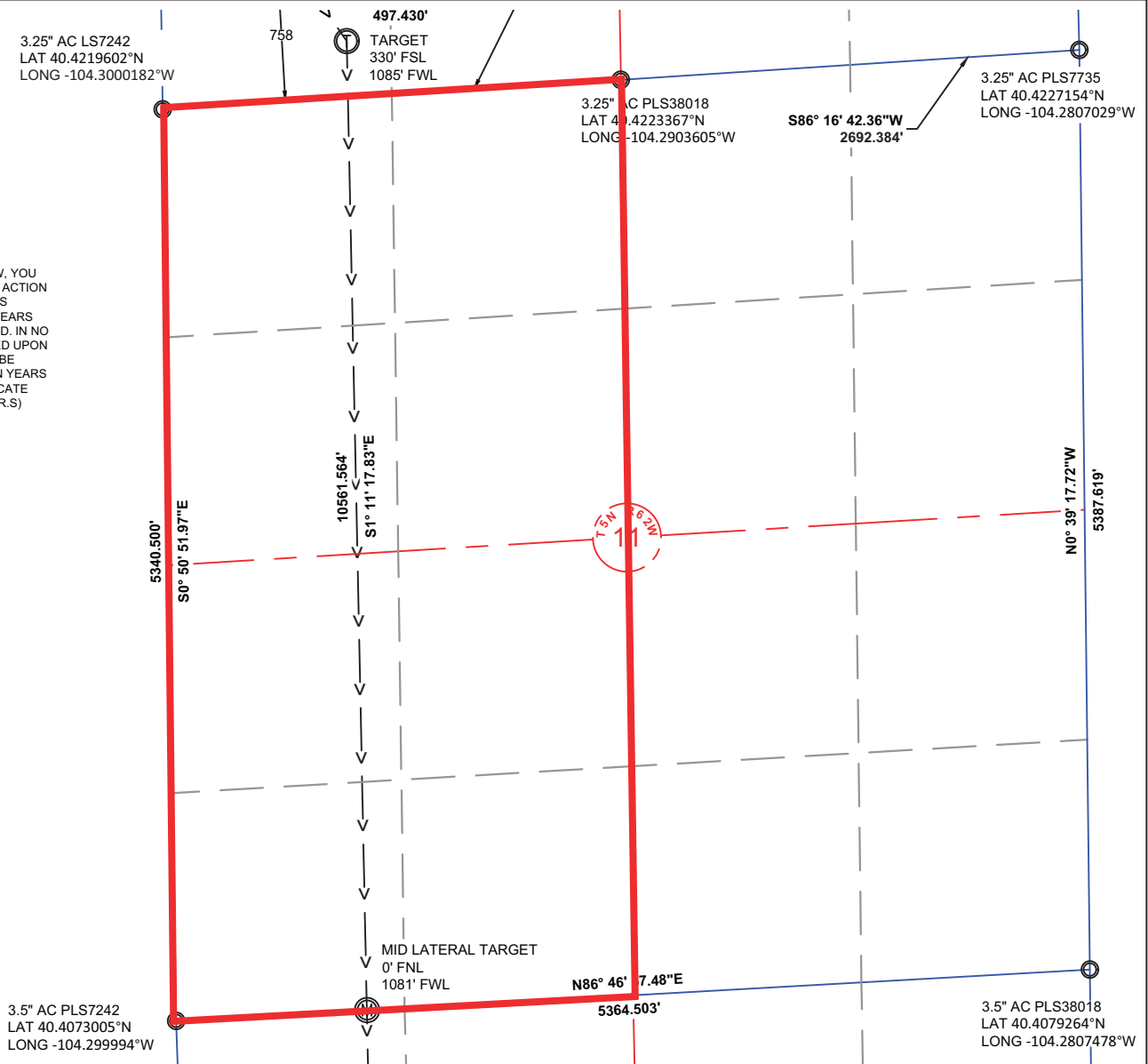
SHEET

1

OF

1

NOTE: UNDER COLORADO LAW, YOU MUST COMMENCE ANY LEGAL ACTION BASED ON ANY DEFECT IN THIS CERTIFICATE WITHIN THREE YEARS AFTER DEFECT IS DISCOVERED. IN NO EVENT MAY ANY ACTION BASED UPON ANY DEFECT IN THIS SURVEY BE COMMENCED MORE THAN TEN YEARS AFTER DATE OF THIS CERTIFICATE SHOWN HEREON. (13-80105 C.R.S.)



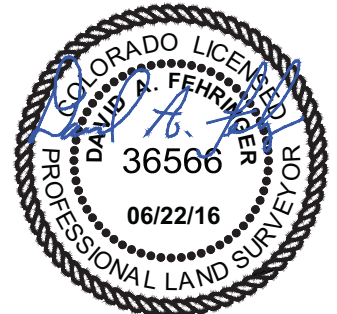
#### NOTES:

- ALL BEARINGS ARE GRID BASED UPON THE COLORADO STATE PLANE COORDINATE SYSTEM, NORTH ZONE, NAD83(2011) DERIVED FROM POST-PROCESSED STATIC GPS OBSERVATIONS.
- DISTANCES ARE ON GRID
- VERTICAL DATUM IS NAVD88 BASED UPON GPS OBSERVATIONS
- PDOP VALUE EQUALS 1.6.
- GPS OPERATOR: MARC MAYER.
- GROUND ELEVATION AT WELLHEAD = 4623.64'
- ALL SECTION LENGTHS ARE MEASURED DISTANCES UNLESS NOTED BY (R), RECORD BEARING AND DISTANCE.
- NEAREST CULTURAL DISTANCES
  - BUILDINGS: 5280' +/-
  - BUILDING UNIT: 5280' +/-
  - HIGH OCCUPANCY BUILDING UNIT: 5280' +/-
  - DESIGNATED OUTSIDE ACTIVITY AREA: 5280' +/-
  - PUBLIC ROAD: 5280' +/-
  - ABOVE GROUND UTILITY: 407' +/-
  - RAILROAD: 5280' +/-
  - PROPERTY LINE: 811' +/-

5	NAD 83		STATE PLANE COORDINATES	
J14-2-14XRLNB	LATITUDE	LONGITUDE	NORTHING	EASTING
SURFACE	40.4241572	-104.2971102	1399632.26	3334887.61
TARGET 1	40.4230192	-104.2961230	1399221.44	3335168.07
MID LATERAL	40.4074269	-104.2961147	1393541.76	3335247.49
BOTTOM HOLE	40.3940283	-104.2958514	1388662.14	3335387.10

#### CERTIFICATE OF SURVEYOR:

I, DAVID A. FEHRINGER OF LANDER, WYOMING HEREBY CERTIFY THAT THIS WELL LOCATION CERTIFICATE WAS PREPARED FROM NOTES TAKEN DURING AN ACTUAL SURVEY ON JUNE 03, 2016; AND THAT IT CORRECTLY SHOWS THE DRILLING LOCATION OF BONANZA CREEK ENERGY, INC. STATE ANTELOPE J14-2-14XRLNB AS STAKED DURING SAID SURVEY. THIS MAP DOES NOT REPRESENT A BOUNDARY SURVEY OR AN IMPROVEMENT LOCATION PLAT AND SHOULD NOT BE USED FOR THE ESTABLISHMENT OF BOUNDARY LINES.

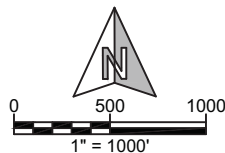


PAD CORNERS	NAD 83	
SA 14-2 PAD	LATITUDE	LONGITUDE
NW	40.4248119	-104.2977952
NE	40.4243171	-104.2956531
SE	40.4232373	-104.2956674
SW	40.4232007	-104.2978115



**WILLIAM H. SMITH & ASSOCIATES, Inc.**  
155 N. 1st Street  
Lander, WY 82520  
Phone: 307-335-5646

Drawn By: MAM  
Job No.: 15043  
Checked By: DAF  
Date: 06/22/16  
Revision: Wells 1-5 location change 12/04/17 MAM



IF BAR LENGTH DOES NOT EQUAL 1" (ONE INCH), THIS PAGE WAS NOT PLOTTED TO THE INTENDED SCALE.

#### LOCATION CERTIFICATE

**STATE ANTELOPE  
J14-2-14XRLNB  
LATERAL**  
W $\frac{1}{2}$  W $\frac{1}{2}$ , SECTION 11,  
T.5N., R.62W., 6th PM  
WELD COUNTY, COLORADO



410 17th Street  
Denver, CO 80202  
(720) 440-6100

SHEET  
2  
OF  
3

NOTE: UNDER COLORADO LAW, YOU MUST COMMENCE ANY LEGAL ACTION BASED ON ANY DEFECT IN THIS CERTIFICATE WITHIN THREE YEARS AFTER DEFECT IS DISCOVERED. IN NO EVENT MAY ANY ACTION BASED UPON ANY DEFECT IN THIS SURVEY BE COMMENCED MORE THAN TEN YEARS AFTER DATE OF THIS CERTIFICATE SHOWN HEREON. (13-80105 C.R.S.)

3.5" AC PLS7242  
LAT 40.4073005°N  
LONG -104.299994°W

MID LATERAL TARGET  
0' FNL  
1081' FWL

N86° 46' 57.48"E

5364.503'

3.5" AC PLS38018  
LAT 40.4079264°N  
LONG -104.2807478°W

N1° 55' 13.66"W

5342.880'

10561.564'  
S1° 11' 17.83"E

5387.486'

S0° 39' 23.67"E

BOTTOM HOLE LOCATION

1057

470

5244.878'

S87° 13' 33.95"W

3.5" AC PLS22098  
LAT 40.3926372°N  
LONG -104.2996106°W

3" AC PLS17492  
LAT 40.3931377°N  
LONG -104.2807921°W

#### NOTES:

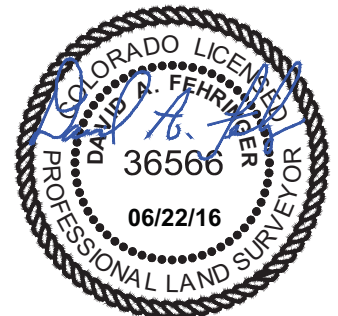
- ALL BEARINGS ARE GRID BASED UPON THE COLORADO STATE PLANE COORDINATE SYSTEM, NORTH ZONE, NAD83(2011) DERIVED FROM POST-PROCESSED STATIC GPS OBSERVATIONS.
- DISTANCES ARE ON GRID
- VERTICAL DATUM IS NAVD88 BASED UPON GPS OBSERVATIONS
- PDOP VALUE EQUALS 1.6
- GPS OPERATOR: MARC MAYER.
- GROUND ELEVATION AT WELLHEAD = 4623.64'
- ALL SECTION LENGTHS ARE MEASURED DISTANCES UNLESS NOTED BY (R), RECORD BEARING AND DISTANCE.
- NEAREST CULTURAL DISTANCES  
BUILDINGS: 5280' +/-  
BUILDING UNIT: 5280' +/-  
HIGH OCCUPANCY BUILDING UNIT: 5280'+  
DESIGNATED OUTSIDE ACTIVITY AREA: 5280'+  
PUBLIC ROAD: 5280'+  
ABOVE GROUND UTILITY: 407' +/-  
RAILROAD: 5280'+  
PROPERTY LINE: 811' +/-

#### CERTIFICATE OF SURVEYOR:

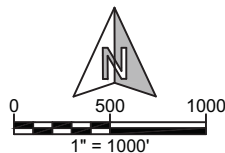
I, DAVID A. FEHRINGER OF LANDER, WYOMING HEREBY CERTIFY THAT THIS WELL LOCATION CERTIFICATE WAS PREPARED FROM NOTES TAKEN DURING AN ACTUAL SURVEY ON JUNE 03, 2016; AND THAT IT CORRECTLY SHOWS THE DRILLING LOCATION OF BONANZA CREEK ENERGY, INC. STATE ANTELOPE J14-2-14XRLNB AS STAKED DURING SAID SURVEY. THIS MAP DOES NOT REPRESENT A BOUNDARY SURVEY OR AN IMPROVEMENT LOCATION PLAT AND SHOULD NOT BE USED FOR THE ESTABLISHMENT OF BOUNDARY LINES.

5	NAD 83		STATE PLANE COORDINATES	
J14-2-14XRLNB	LATITUDE	LONGITUDE	NORTHING	EASTING
SURFACE	40.4241572	-104.2971102	1399632.26	3334887.61
TARGET 1	40.4230192	-104.2961230	1399221.44	3335168.07
MID LATERAL	40.4074269	-104.2961147	1393541.76	3335247.49
BOTTOM HOLE	40.3940283	-104.2958514	1388662.14	3335387.10

PAD CORNERS	NAD 83	
SA 14-2 PAD	LATITUDE	LONGITUDE
NW	40.4248119	-104.2977952
NE	40.4243171	-104.2956531
SE	40.4232373	-104.2956674
SW	40.4232007	-104.2978115



**WILLIAM H. SMITH & ASSOCIATES, Inc.**  
155 N. 1st Street  
Lander, WY 82520  
Phone: 307-335-5646



Drawn By: MAM  
Job No.: 15043  
Checked By: DAF  
Date: 06/22/16  
Revision: Wells 1-5 location change 12/04/17 MAM

IF BAR LENGTH DOES NOT EQUAL 1"(ONE INCH), THIS PAGE WAS NOT PLOTTED TO THE INTENDED SCALE.

#### LOCATION CERTIFICATE

STATE ANTELOPE  
**J14-2-14XRLNB**  
**BOTTOM HOLE**  
SW $\frac{1}{4}$  SW $\frac{1}{4}$ , SECTION 14,  
T.5N., R.62W., 6th PM  
WELD COUNTY, COLORADO



410 17th Street  
Denver, CO 80202  
(720) 440-6100

SHEET  
3  
OF  
3