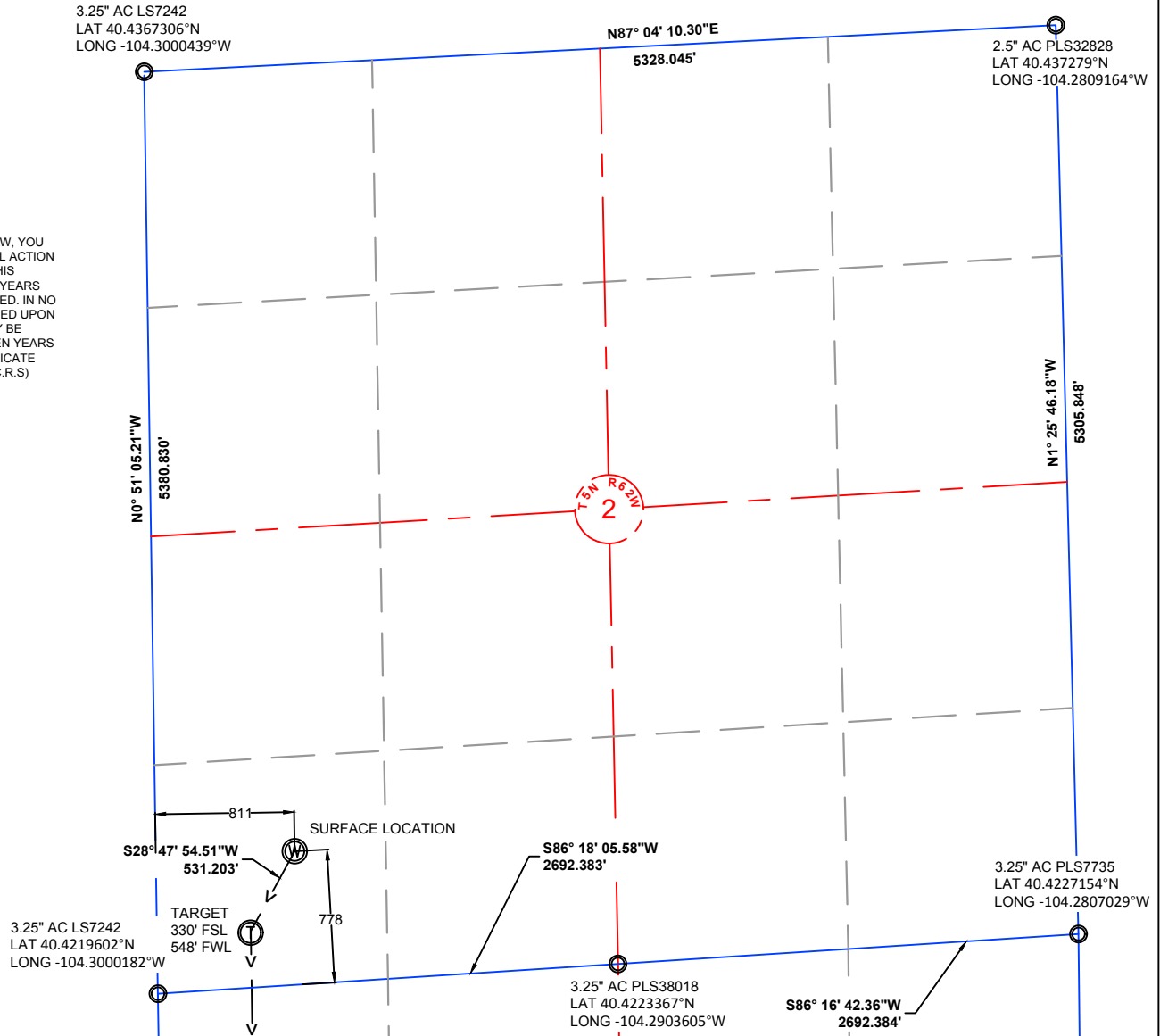


NOTE: UNDER COLORADO LAW, YOU MUST COMMENCE ANY LEGAL ACTION BASED ON ANY DEFECT IN THIS CERTIFICATE WITHIN THREE YEARS AFTER DEFECT IS DISCOVERED. IN NO EVENT MAY ANY ACTION BASED UPON ANY DEFECT IN THIS SURVEY BE COMMENCED MORE THAN TEN YEARS AFTER DATE OF THIS CERTIFICATE SHOWN HEREON. (13-80105 C.R.S.)



#### NOTES:

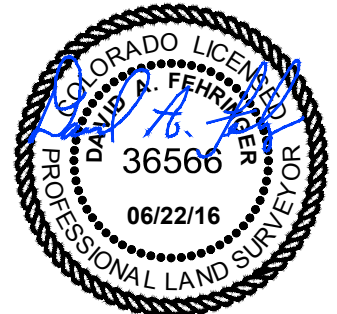
- ALL BEARINGS ARE GRID BASED UPON THE COLORADO STATE PLANE COORDINATE SYSTEM, NORTH ZONE, NAD83(2011) DERIVED FROM POST-PROCESSED STATIC GPS OBSERVATIONS.
- DISTANCES ARE ON GRID
- VERTICAL DATUM IS NAVD88 BASED UPON GPS OBSERVATIONS
- PDOP VALUE EQUALS 1.6
- GPS OPERATOR: MARC MAYER.
- GROUND ELEVATION AT WELLHEAD = 4623.64'
- ALL SECTION LENGTHS ARE MEASURED DISTANCES UNLESS NOTED BY (R), RECORD BEARING AND DISTANCE.
- NEAREST CULTURAL DISTANCES
  - BUILDINGS: 5280' +/-
  - BUILDING UNIT: 5280' +/-
  - HIGH OCCUPANCY BUILDING UNIT: 5280' +/-
  - DESIGNATED OUTSIDE ACTIVITY AREA: 5280' +/-
  - PUBLIC ROAD: 5280' +/-
  - ABOVE GROUND UTILITY: 410' +/-
  - RAILROAD: 5280' +/-
  - PROPERTY LINE: 811' +/-

4	NAD 83		STATE PLANE COORDINATES	
14-2-14XRLNB	LATITUDE	LONGITUDE	NORTHING	EASTING
SURFACE	40.4242121	-104.2971099	1399652.26	3334887.43
TARGET 1	40.4229440	-104.2980516	1399186.75	3334631.53
MID LATERAL	40.4073644	-104.2980346	1393511.73	3334713.20
BOTTOM HOLE	40.3939783	-104.2977281	1388636.83	3334864.65

PAD CORNERS	NAD 83	
SA 14-2 PAD	LATITUDE	LONGITUDE
NW	40.4248119	-104.2977952
NE	40.4243171	-104.2956531
SE	40.4232373	-104.2956674
SW	40.4232007	-104.2978115

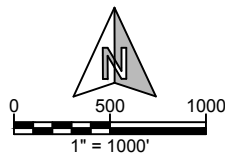
#### CERTIFICATE OF SURVEYOR:

I, DAVID A. FEHRINGER OF LANDER, WYOMING HEREBY CERTIFY THAT THIS WELL LOCATION CERTIFICATE WAS PREPARED FROM NOTES TAKEN DURING AN ACTUAL SURVEY ON JUNE 03, 2016; AND THAT IT CORRECTLY SHOWS THE DRILLING LOCATION OF BONANZA CREEK ENERGY, INC. STATE ANTELOPE 14-2-14XRLNB AS STAKED DURING SAID SURVEY. THIS MAP DOES NOT REPRESENT A BOUNDARY SURVEY OR AN IMPROVEMENT LOCATION PLAT AND SHOULD NOT BE USED FOR THE ESTABLISHMENT OF BOUNDARY LINES.



**WILLIAM H. SMITH & ASSOCIATES, Inc.**  
155 N. 1st Street  
Lander, WY 82520  
Phone: 307-335-5646

Drawn By: MAM  
Job No.: 15043  
Checked By: DAF  
Date: 06/22/16  
Revision: Wells 1-5 location change 12/04/17 MAM



IF BAR LENGTH DOES NOT EQUAL 1"(ONE INCH), THIS PAGE WAS NOT PLOTTED TO THE INTENDED SCALE.

#### LOCATION CERTIFICATE

STATE ANTELOPE  
14-2-14XRLNB  
SURFACE  
SW¼ SW¼, SECTION 2,  
T.5N., R.62W., 6th PM  
WELD COUNTY, COLORADO



410 17th Street  
Denver, CO 80202  
(720) 440-6100

SHEET  
1  
OF  
3

NOTE: UNDER COLORADO LAW, YOU MUST COMMENCE ANY LEGAL ACTION BASED ON ANY DEFECT IN THIS CERTIFICATE WITHIN THREE YEARS AFTER DEFECT IS DISCOVERED. IN NO EVENT MAY ANY ACTION BASED UPON ANY DEFECT IN THIS SURVEY BE COMMENCED MORE THAN TEN YEARS AFTER DATE OF THIS CERTIFICATE SHOWN HEREON. (13-80105 C.R.S.)

## NOTES:

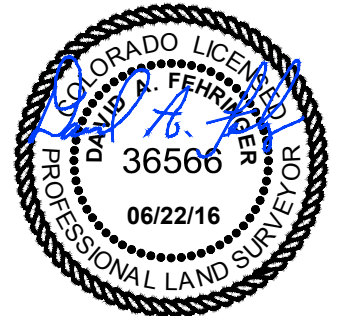
- ALL BEARINGS ARE GRID BASED UPON THE COLORADO STATE PLANE COORDINATE SYSTEM, NORTH ZONE, NAD83(2011) DERIVED FROM POST-PROCESSED STATIC GPS OBSERVATIONS.
- DISTANCES ARE ON GRID
- VERTICAL DATUM IS NAVD88 BASED UPON GPS OBSERVATIONS
- PDOP VALUE EQUALS 1.6.
- GPS OPERATOR: MARC MAYER.
- GROUND ELEVATION AT WELLHEAD = 4623.64'
- ALL SECTION LENGTHS ARE MEASURED DISTANCES UNLESS NOTED BY (R), RECORD BEARING AND DISTANCE.
- NEAREST CULTURAL DISTANCES  
BUILDINGS: 5280' +/-  
BUILDING UNIT: 5280' +/-  
HIGH OCCUPANCY BUILDING UNIT: 5280'+  
DESIGNATED OUTSIDE ACTIVITY AREA: 5280'+  
PUBLIC ROAD: 5280'+  
ABOVE GROUND UTILITY: 410' +/-  
RAILROAD: 5280'+  
PROPERTY LINE: 811' +/-

4	NAD 83		STATE PLANE COORDINATES	
14-2-14XRLNB	LATITUDE	LONGITUDE	NORTHING	EASTING
SURFACE	40.4242121	-104.2971099	1399652.26	3334887.43
TARGET 1	40.4229440	-104.2980516	1399186.75	3334631.53
MID LATERAL	40.4073644	-104.2980346	1393511.73	3334713.20
BOTTOM HOLE	40.3939783	-104.2977281	1388636.83	3334864.65

PAD CORNERS	NAD 83	
SA 14-2 PAD	LATITUDE	LONGITUDE
NW	40.4248119	-104.2977952
NE	40.4243171	-104.2956531
SE	40.4232373	-104.2956674
SW	40.4232007	-104.2978115

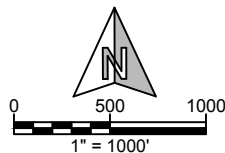
## CERTIFICATE OF SURVEYOR:

I, DAVID A. FEHRINGER OF LANDER, WYOMING HEREBY CERTIFY THAT THIS WELL LOCATION CERTIFICATE WAS PREPARED FROM NOTES TAKEN DURING AN ACTUAL SURVEY ON JUNE 03, 2016; AND THAT IT CORRECTLY SHOWS THE DRILLING LOCATION OF BONANZA CREEK ENERGY, INC. STATE ANTELOPE 14-2-14XRLNB AS STAKED DURING SAID SURVEY. THIS MAP DOES NOT REPRESENT A BOUNDARY SURVEY OR AN IMPROVEMENT LOCATION PLAT AND SHOULD NOT BE USED FOR THE ESTABLISHMENT OF BOUNDARY LINES.



**WILLIAM H. SMITH & ASSOCIATES, Inc.**  
155 N. 1st Street  
Lander, WY 82520  
Phone: 307-335-5646

Drawn By: MAM  
Job No.: 15043  
Checked By: DAF  
Date: 06/22/16  
Revision: Wells 1-5 location change 12/04/17 MAM



IF BAR LENGTH DOES NOT EQUAL 1"(ONE INCH), THIS PAGE WAS NOT PLOTTED TO THE INTENDED SCALE.

## LOCATION CERTIFICATE

STATE ANTELOPE  
14-2-14XRLNB  
LATERAL  
W $\frac{1}{2}$  W $\frac{1}{2}$ , SECTION 11,  
T.5N., R.62W., 6th PM  
WELD COUNTY, COLORADO



410 17th Street  
Denver, CO 80202  
(720) 440-6100

SHEET

2

OF

3

NOTE: UNDER COLORADO LAW, YOU MUST COMMENCE ANY LEGAL ACTION BASED ON ANY DEFECT IN THIS CERTIFICATE WITHIN THREE YEARS AFTER DEFECT IS DISCOVERED. IN NO EVENT MAY ANY ACTION BASED UPON ANY DEFECT IN THIS SURVEY BE COMMENCED MORE THAN TEN YEARS AFTER DATE OF THIS CERTIFICATE SHOWN HEREON. (13-80105 C.R.S.)

3.5" AC PLS7242  
LAT 40.4073005°N  
LONG -104.299994°W

MID LATERAL TARGET  
0' FNL  
546' FWL

N86° 46' 57.48"E  
5364.503'

3.5" AC PLS38018  
LAT 40.4079264°N  
LONG -104.2807478°W

N1° 55' 13.66"W  
5342.880'

4877.249'  
S1° 46' 46.16"E

T5N R63W  
14

5387.486'  
S0° 39' 23.67"E

534  
470  
BOTTOM HOLE LOCATION

3.5" AC PLS22098  
LAT 40.3926372°N  
LONG -104.2996106°W

5244.878'  
S87° 13' 33.95"W

3" AC PLS17492  
LAT 40.3931377°N  
LONG -104.2807921°W

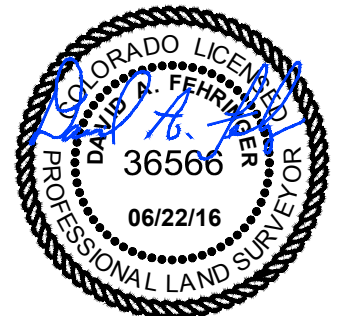
#### NOTES:

- ALL BEARINGS ARE GRID BASED UPON THE COLORADO STATE PLANE COORDINATE SYSTEM, NORTH ZONE, NAD83(2011) DERIVED FROM POST-PROCESSED STATIC GPS OBSERVATIONS.
- DISTANCES ARE ON GRID
- VERTICAL DATUM IS NAVD88 BASED UPON GPS OBSERVATIONS
- PDOP VALUE EQUALS 1.6
- GPS OPERATOR: MARC MAYER.
- GROUND ELEVATION AT WELLHEAD = 4623.64'
- ALL SECTION LENGTHS ARE MEASURED DISTANCES UNLESS NOTED BY (R), RECORD BEARING AND DISTANCE.
- NEAREST CULTURAL DISTANCES  
BUILDINGS: 5280' +/-  
BUILDING UNIT: 5280' +/-  
HIGH OCCUPANCY BUILDING UNIT: 5280'+  
DESIGNATED OUTSIDE ACTIVITY AREA: 5280'+  
PUBLIC ROAD: 5280'+  
ABOVE GROUND UTILITY: 410' +/-  
RAILROAD: 5280'+  
PROPERTY LINE: 811' +/-

4	NAD 83		STATE PLANE COORDINATES	
14-2-14XRLNB	LATITUDE	LONGITUDE	NORTHING	EASTING
SURFACE	40.4242121	-104.2971099	1399652.26	3334887.43
TARGET 1	40.4229440	-104.2980516	1399186.75	3334631.53
MID LATERAL	40.4073644	-104.2980346	1393511.73	3334713.20
BOTTOM HOLE	40.3939783	-104.2977281	1388636.83	3334864.65

#### CERTIFICATE OF SURVEYOR:

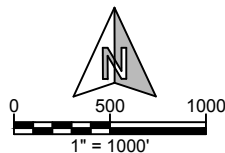
I, DAVID A. FEHRINGER OF LANDER, WYOMING HEREBY CERTIFY THAT THIS WELL LOCATION CERTIFICATE WAS PREPARED FROM NOTES TAKEN DURING AN ACTUAL SURVEY ON JUNE 03, 2016; AND THAT IT CORRECTLY SHOWS THE DRILLING LOCATION OF BONANZA CREEK ENERGY, INC. STATE ANTELOPE 14-2-14XRLNB AS STAKED DURING SAID SURVEY. THIS MAP DOES NOT REPRESENT A BOUNDARY SURVEY OR AN IMPROVEMENT LOCATION PLAT AND SHOULD NOT BE USED FOR THE ESTABLISHMENT OF BOUNDARY LINES.



PAD CORNERS		NAD 83	
SA 14-2 PAD	LATITUDE	LONGITUDE	
NW	40.4248119	-104.2977952	
NE	40.4243171	-104.2956531	
SE	40.4232373	-104.2956674	
SW	40.4232007	-104.2978115	



**WILLIAM H. SMITH & ASSOCIATES, Inc.**  
155 N. 1st Street  
Lander, WY 82520  
Phone: 307-335-5646



Drawn By: MAM  
Job No.: 15043  
Checked By: DAF  
Date: 06/22/16  
Revision: Wells 1-5 location change 12/04/17 MAM

IF BAR LENGTH DOES NOT EQUAL 1"(ONE INCH), THIS PAGE WAS NOT PLOTTED TO THE INTENDED SCALE.

#### LOCATION CERTIFICATE

STATE ANTELOPE  
14-2-14XRLNB  
BOTTOM HOLE  
SW $\frac{1}{4}$  SW $\frac{1}{4}$ , SECTION 14,  
T.5N., R.62W., 6th PM  
WELD COUNTY, COLORADO



410 17th Street  
Denver, CO 80202  
(720) 440-6100

SHEET  
3  
OF  
3