



410 17th Street, Suite 1400
Denver, CO 80202
(720) 440-6100 phone
(720) 305-0804 fax

Bonanzacrk.com

May 8th, 2018

State of Colorado
Oil and Gas Conservation Commission
1120 Lincoln Street, Suite 801
Denver, CO 80203

RE: Proposed Wellbore Spacing Unit
State Antelope E-2-14XRLNB
Niobrara New Drill
SWSW Section 2, Township 5N, Range 62W, 6th PM
Weld County, Colorado

Dear Director Murphy,

Bonanza Creek Energy Operating Company, LLC. ("Bonanza Creek") is planning to drill the above captioned well in accordance with the provisions of Colorado Oil and Gas Conservation Commission (COGCC) Rule 318A.e.

Bonanza Creek's proposed wellbore spacing unit consists of:

Township 5N, Range 62W (Weld County):

Section 2: SWSW
Section 3: SESE
Section 10: E2E2
Section 11: W2W2
Section 14: W2W2
Section 15: E2E2

Total acres: 720ac

The 30 day notification time period has passed and we have not yet received any objections to such well locations or proposed spacing unit, therefore Bonanza Creek hereby requests the Director to approve the above mentioned well. Bonanza Creek respectfully requests the COGCC review the enclosed map illustrating the proposed wellbore spacing unit.

Regards,
Bonanza Creek Energy Operating Company, LLC.

Brian Dodek, P.G.
Manager – Environmental & Regulatory Compliance

3.25" AC LS7242
LAT 40.4367306°N
LONG -104.3000439°W

N87° 04' 10.30"E

5328.045'

2.5" AC PLS32828
LAT 40.437279°N
LONG -104.2809164°W

NOTE: UNDER COLORADO LAW, YOU
MUST COMMENCE ANY LEGAL ACTION
BASED ON ANY DEFECT IN THIS
CERTIFICATE WITHIN THREE YEARS
AFTER DEFECT IS DISCOVERED. IN NO
EVENT MAY ANY ACTION BASED UPON
ANY DEFECT IN THIS SURVEY BE
COMMENCED MORE THAN TEN YEARS
AFTER DATE OF THIS CERTIFICATE
SHOWN HEREON. (13-80105 C.R.S.)

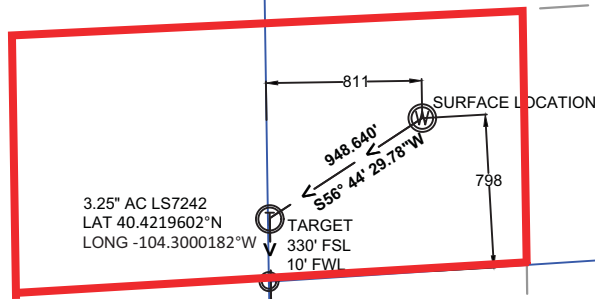
Sec. 3

N0° 51' 05.21"W

5380.830'

N1° 25' 46.18"W

5305.848'



S86° 18' 05.58"W
2692.383'

3.25" AC PLS7735
LAT 40.4227154°N
LONG -104.2807029°W

3.25" AC PLS38018
LAT 40.4223367°N
LONG -104.2903605°W

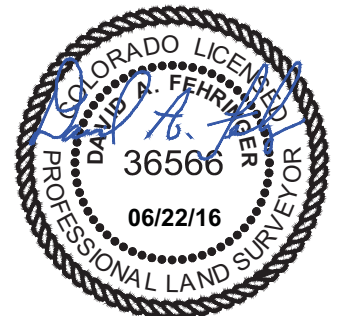
S86° 16' 42.36"W
2692.384'

NOTES:

- ALL BEARINGS ARE GRID BASED UPON THE COLORADO STATE PLANE COORDINATE SYSTEM, NORTH ZONE, NAD83(2011) DERIVED FROM POST-PROCESSED STATIC GPS OBSERVATIONS.
- DISTANCES ARE ON GRID
- VERTICAL DATUM IS NAVD88 BASED UPON GPS OBSERVATIONS
- PDOP VALUE EQUALS 1.6.
- GPS OPERATOR: MARC MAYER.
- GROUND ELEVATION AT WELLHEAD = 4623.56'
- ALL SECTION LENGTHS ARE MEASURED DISTANCES UNLESS NOTED BY (R), RECORD BEARING AND DISTANCE.
- NEAREST CULTURAL DISTANCES
BUILDINGS: 5280' +/-
BUILDING UNIT: 5280' +/-
HIGH OCCUPANCY BUILDING UNIT: 5280'+
DESIGNATED OUTSIDE ACTIVITY AREA: 5280'+
PUBLIC ROAD: 5280'+
ABOVE GROUND UTILITY: 415' +/-
RAILROAD: 5280'+
PROPERTY LINE: 811' +/-

CERTIFICATE OF SURVEYOR:

I, DAVID A. FEHRINGER OF LANDER, WYOMING HEREBY CERTIFY THAT THIS WELL LOCATION CERTIFICATE WAS PREPARED FROM NOTES TAKEN DURING AN ACTUAL SURVEY ON JUNE 03, 2016; AND THAT IT CORRECTLY SHOWS THE DRILLING LOCATION OF BONANZA CREEK ENERGY, INC. STATE ANTELOPE E-2-14XRLNB AS STAKED DURING SAID SURVEY. THIS MAP DOES NOT REPRESENT A BOUNDARY SURVEY OR AN IMPROVEMENT LOCATION PLAT AND SHOULD NOT BE USED FOR THE ESTABLISHMENT OF BOUNDARY LINES.

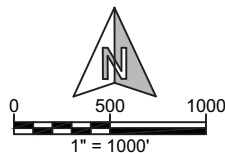


3	NAD 83		STATE PLANE COORDINATES	
E-2-14XRLNB	LATITUDE	LONGITUDE	NORTHING	EASTING
SURFACE	40.4242670	-104.2971096	1399672.26	3334887.24
TARGET 1	40.4228686	-104.2999839	1399152.01	3334093.99
MID LATERAL	40.4073017	-104.2999581	1393481.64	3334177.91
BOTTOM HOLE	40.3939282	-104.2996085	1388611.47	3334341.21

PAD CORNERS		NAD 83	
SA 14-2 PAD		LATITUDE	LONGITUDE
NW		40.4248119	-104.2977952
NE		40.4243171	-104.2956531
SE		40.4232373	-104.2956674
SW		40.4232007	-104.2978115



**WILLIAM H. SMITH &
ASSOCIATES, Inc.**
155 N. 1st Street
Lander, WY 82520
Phone: 307-335-5646



Drawn By: MAM
Job No.: 15043
Checked By: DAF
Date: 06/22/16
Revision: Wells 1-5 location change 12/04/17 MAM

IF BAR LENGTH DOES NOT EQUAL
1"(ONE INCH), THIS PAGE WAS NOT
PLOTTED TO THE INTENDED SCALE.

LOCATION CERTIFICATE

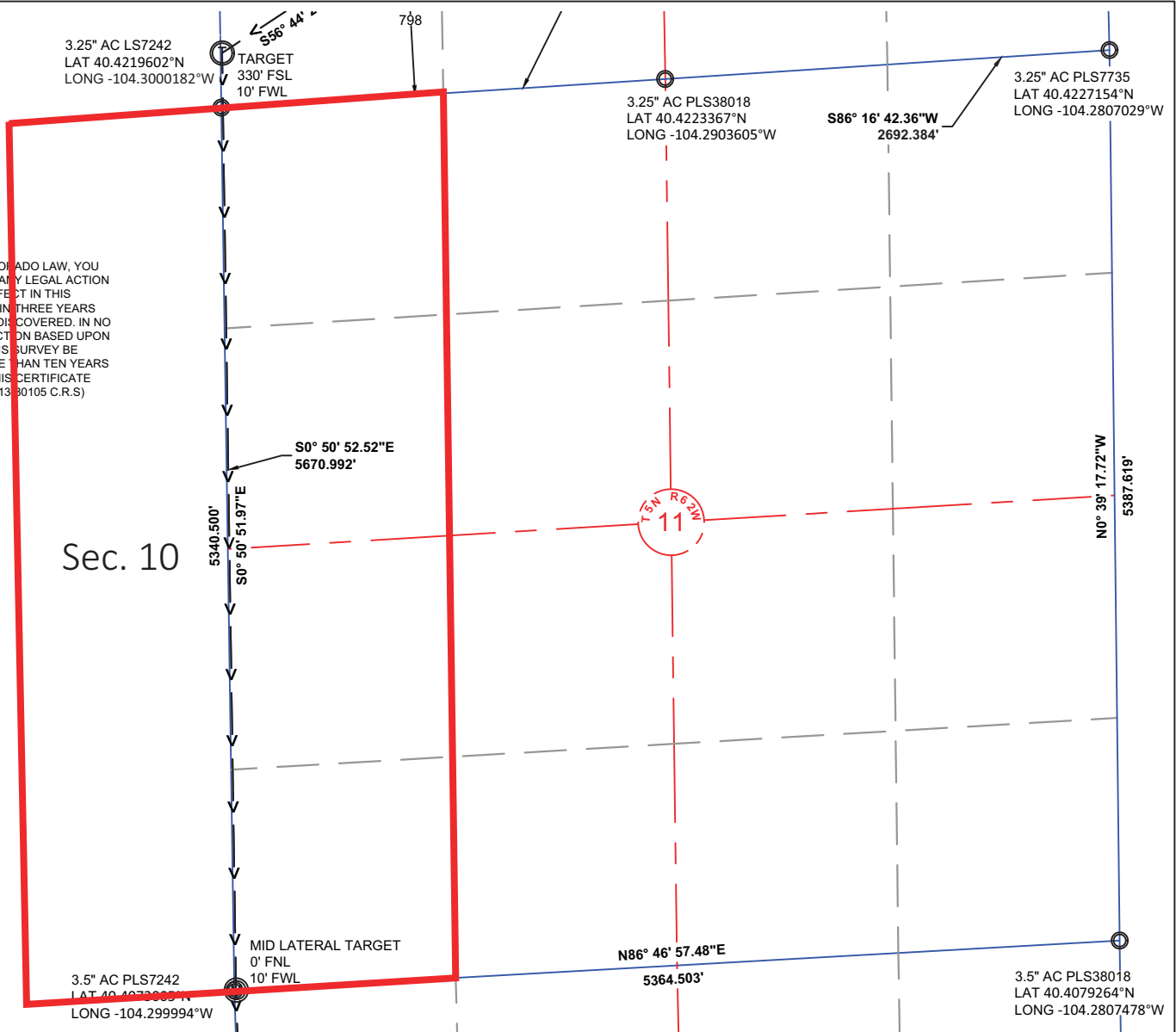
STATE ANTELOPE
E-2-14XRLNB
SURFACE
SW¼ SW¼, SECTION 2,
T.5N., R.62W., 6th PM
WELD COUNTY, COLORADO



410 17th Street
Denver, CO 80202
(720) 440-6100

SHEET
1
OF
3

NOTE: UNDER COLORADO LAW, YOU MUST COMMENCE ANY LEGAL ACTION BASED ON ANY DEFECT IN THIS CERTIFICATE WITHIN THREE YEARS AFTER DEFECT IS DISCOVERED. IN NO EVENT MAY ANY ACTION BASED UPON ANY DEFECT IN THIS SURVEY BE COMMENCED MORE THAN TEN YEARS AFTER DATE OF THIS CERTIFICATE SHOWN HEREON. (13-80105 C.R.S.)



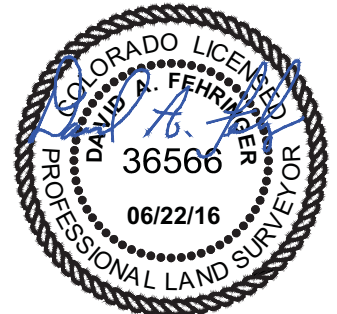
NOTES:

- ALL BEARINGS ARE GRID BASED UPON THE COLORADO STATE PLANE COORDINATE SYSTEM, NORTH ZONE, NAD83(2011) DERIVED FROM POST-PROCESSED STATIC GPS OBSERVATIONS.
- DISTANCES ARE ON GRID
- VERTICAL DATUM IS NAVD88 BASED UPON GPS OBSERVATIONS
- PDOP VALUE EQUALS 1.6.
- GPS OPERATOR: MARC MAYER.
- GROUND ELEVATION AT WELLHEAD = 4623.56'
- ALL SECTION LENGTHS ARE MEASURED DISTANCES UNLESS NOTED BY (R), RECORD BEARING AND DISTANCE.
- NEAREST CULTURAL DISTANCES
 - BUILDINGS: 5280' +/-
 - BUILDING UNIT: 5280' +/-
 - HIGH OCCUPANCY BUILDING UNIT: 5280' +/-
 - DESIGNATED OUTSIDE ACTIVITY AREA: 5280' +/-
 - PUBLIC ROAD: 5280' +/-
 - ABOVE GROUND UTILITY: 415' +/-
 - RAILROAD: 5280' +/-
 - PROPERTY LINE: 811' +/-

3	NAD 83		STATE PLANE COORDINATES	
E-2-14XRLNB	LATITUDE	LONGITUDE	NORTHING	EASTING
SURFACE	40.4242670	-104.2971096	1399672.26	3334887.24
TARGET 1	40.4228686	-104.2999839	1399152.01	3334093.99
MID LATERAL	40.4073017	-104.2999581	1393481.64	3334177.91
BOTTOM HOLE	40.3939282	-104.2996085	1388611.47	3334341.21

CERTIFICATE OF SURVEYOR:

I, DAVID A. FEHRINGER OF LANDER, WYOMING HEREBY CERTIFY THAT THIS WELL LOCATION CERTIFICATE WAS PREPARED FROM NOTES TAKEN DURING AN ACTUAL SURVEY ON JUNE 03, 2016; AND THAT IT CORRECTLY SHOWS THE DRILLING LOCATION OF BONANZA CREEK ENERGY, INC. STATE ANTELOPE E-2-14XRLNB AS STAKED DURING SAID SURVEY. THIS MAP DOES NOT REPRESENT A BOUNDARY SURVEY OR AN IMPROVEMENT LOCATION PLAT AND SHOULD NOT BE USED FOR THE ESTABLISHMENT OF BOUNDARY LINES.

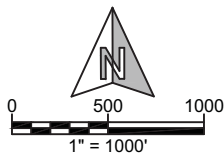


PAD CORNERS	NAD 83	
SA 14-2 PAD	LATITUDE	LONGITUDE
NW	40.4248119	-104.2977952
NE	40.4243171	-104.2956531
SE	40.4232373	-104.2956674
SW	40.4232007	-104.2978115



**WILLIAM H. SMITH &
ASSOCIATES, Inc.**
155 N. 1st Street
Lander, WY 82520
Phone: 307-335-5646

Drawn By: MAM
Job No.: 15043
Checked By: DAF
Date: 06/22/16
Revision: Wells 1-5 location change 12/04/17 MAM



IF BAR LENGTH DOES NOT EQUAL
1"(ONE INCH), THIS PAGE WAS NOT
PLOTTED TO THE INTENDED SCALE.

LOCATION CERTIFICATE

STATE ANTELOPE
**E-2-14XRLNB
LATERAL**
W½ W½, SECTION 11,
T.5N., R.62W., 6th PM
WELD COUNTY, COLORADO



410 17th Street
Denver, CO 80202
(720) 440-6100

SHEET
2
OF
3

NOTE: UNDER COLORADO LAW, YOU MUST COMMENCE ANY LEGAL ACTION BASED ON ANY DEFECT IN THIS CERTIFICATE WITHIN THREE YEARS AFTER DEFECT IS DISCOVERED. IN NO EVENT MAY ANY ACTION BASED UPON ANY DEFECT IN THIS SURVEY BE COMMENCED MORE THAN TEN YEARS AFTER DATE OF THIS CERTIFICATE SHOWN HEREON. (13-80105 C.R.S.)

Sec. 15

3.5" AC PLS7242
LAT 40.4073005°N
LONG -104.299994°W

MID LATERAL TARGET
0' FNL
10' FWL

N86° 46' 57.48"E

5364.503'

3.5" AC PLS38018
LAT 40.4079264°N
LONG -104.2807478°W

N1° 55' 13.66"W
542.880'

S1° 55' 13.66"E
4872.905'

T5N R62W
14

5387.486'
S0° 39' 23.67"E

10
470
BOTTOM HOLE LOCATION

3.5" AC PLS22098
LAT 40.3932822°N
LONG -104.2996106°W

5244.878'
S87° 13' 33.95"W

3" AC PLS17492
LAT 40.3931377°N
LONG -104.2807921°W

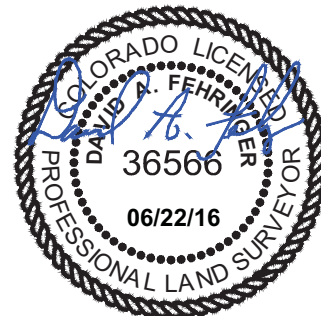
NOTES:

- ALL BEARINGS ARE GRID BASED UPON THE COLORADO STATE PLANE COORDINATE SYSTEM, NORTH ZONE, NAD83(2011) DERIVED FROM POST-PROCESSED STATIC GPS OBSERVATIONS.
- DISTANCES ARE ON GRID
- VERTICAL DATUM IS NAVD88 BASED UPON GPS OBSERVATIONS
- PDOP VALUE EQUALS 1.6.
- GPS OPERATOR: MARC MAYER.
- GROUND ELEVATION AT WELLHEAD = 4623.56'
- ALL SECTION LENGTHS ARE MEASURED DISTANCES UNLESS NOTED BY (R), RECORD BEARING AND DISTANCE.
- NEAREST CULTURAL DISTANCES
BUILDINGS: 5280' +/-
BUILDING UNIT: 5280' +/-
HIGH OCCUPANCY BUILDING UNIT: 5280'+
DESIGNATED OUTSIDE ACTIVITY AREA: 5280'+
PUBLIC ROAD: 5280'+
ABOVE GROUND UTILITY: 415' +/-
RAILROAD: 5280'+
PROPERTY LINE: 811' +/-

3	NAD 83		STATE PLANE COORDINATES	
E-2-14XRLNB	LATITUDE	LONGITUDE	NORTHING	EASTING
SURFACE	40.4242670	-104.2971096	1399672.26	3334887.24
TARGET 1	40.4228686	-104.2999839	1399152.01	3334093.99
MID LATERAL	40.4073017	-104.2999581	1393481.64	3334177.91
BOTTOM HOLE	40.3939282	-104.2996085	1388611.47	3334341.21

CERTIFICATE OF SURVEYOR:

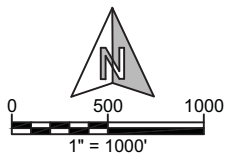
I, DAVID A. FEHRINGER OF LANDER, WYOMING HEREBY CERTIFY THAT THIS WELL LOCATION CERTIFICATE WAS PREPARED FROM NOTES TAKEN DURING AN ACTUAL SURVEY ON JUNE 03, 2016; AND THAT IT CORRECTLY SHOWS THE DRILLING LOCATION OF BONANZA CREEK ENERGY, INC. STATE ANTELOPE E-2-14XRLNB AS STAKED DURING SAID SURVEY. THIS MAP DOES NOT REPRESENT A BOUNDARY SURVEY OR AN IMPROVEMENT LOCATION PLAT AND SHOULD NOT BE USED FOR THE ESTABLISHMENT OF BOUNDARY LINES.



PAD CORNERS		NAD 83	
SA 14-2 PAD	LATITUDE	LONGITUDE	
NW	40.4248119	-104.2977952	
NE	40.4243171	-104.2956531	
SE	40.4232373	-104.2956674	
SW	40.4232007	-104.2978115	



**WILLIAM H. SMITH &
ASSOCIATES, Inc.**
155 N. 1st Street
Lander, WY 82520
Phone: 307-335-5646



Drawn By: MAM
Job No.: 15043
Checked By: DAF
Date: 06/22/16
Revision: Wells 1-5 location change 12/04/17 MAM

IF BAR LENGTH DOES NOT EQUAL 1"(ONE INCH), THIS PAGE WAS NOT PLOTTED TO THE INTENDED SCALE.

LOCATION CERTIFICATE
STATE ANTELOPE
E-2-14XRLNB
BOTTOM HOLE
SW $\frac{1}{4}$ SW $\frac{1}{4}$, SECTION 14,
T.5N., R.62W., 6th PM
WELD COUNTY, COLORADO

BONANZA CREEK
410 17th Street
Denver, CO 80202
(720) 440-6100

SHEET
3
OF
3