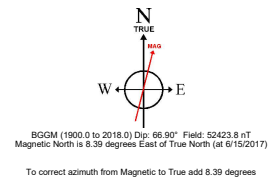
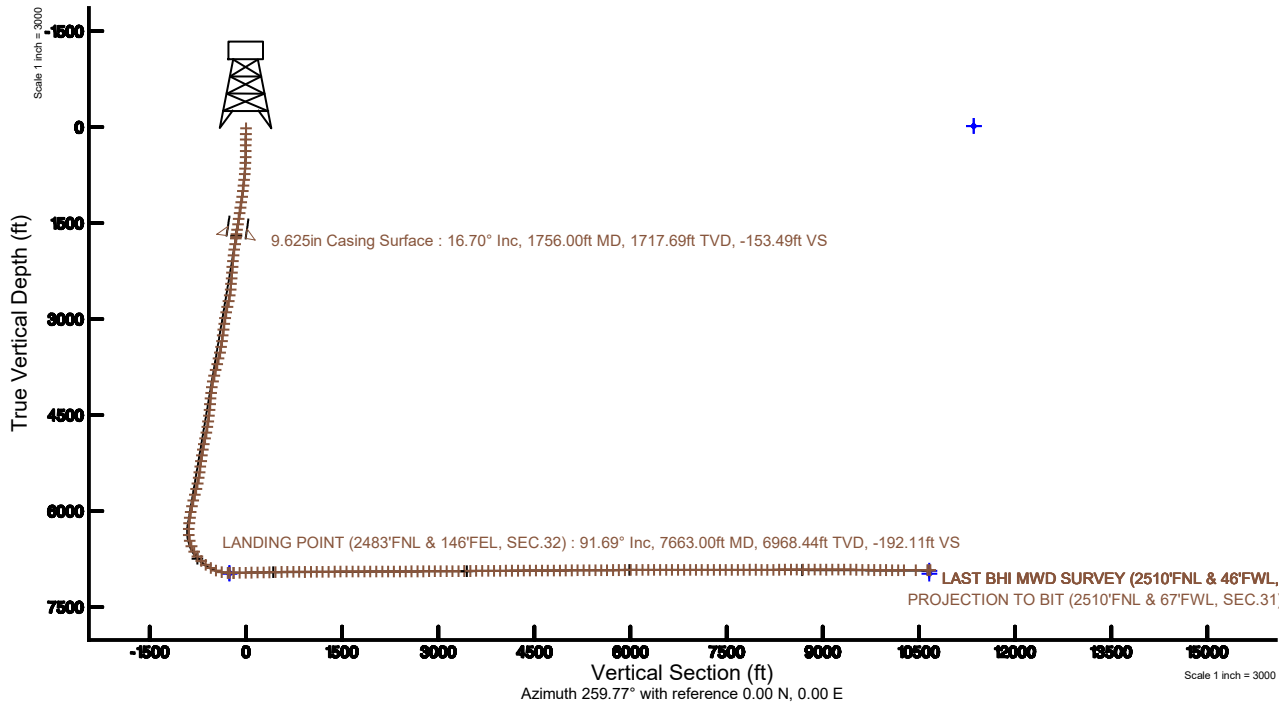
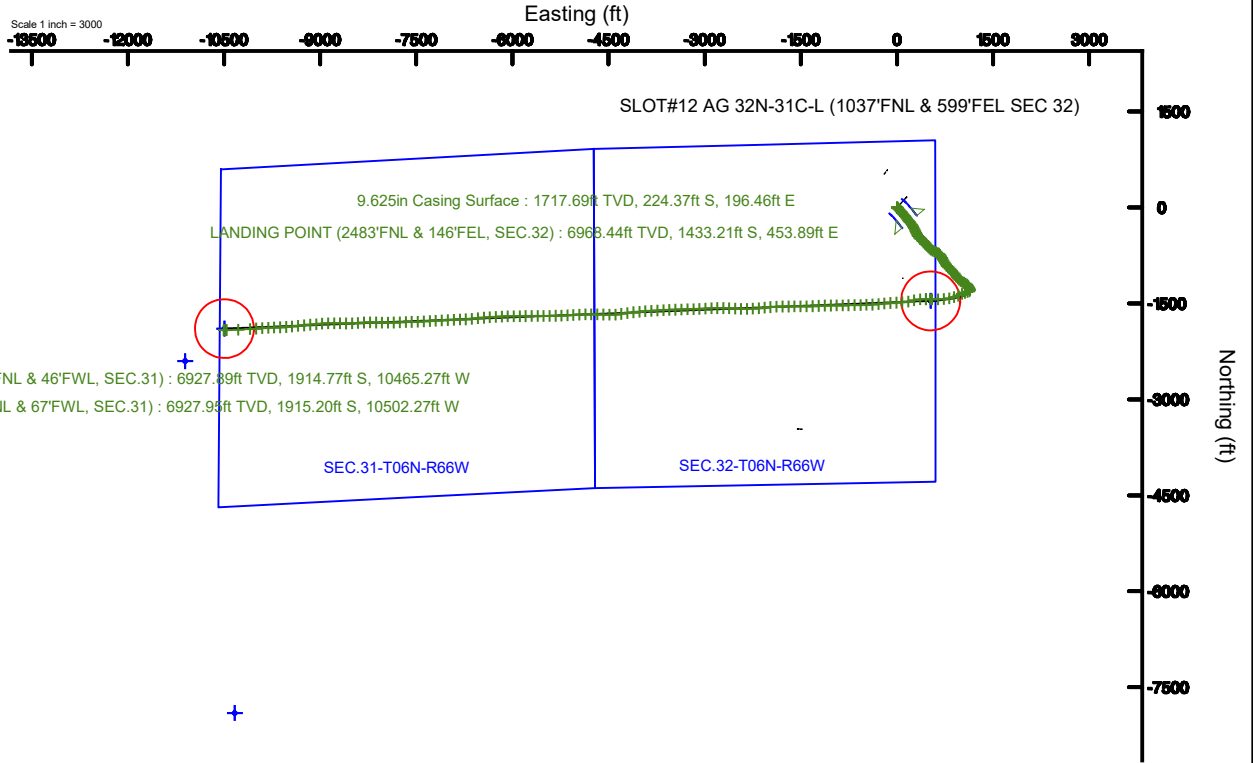


# SRC ENERGY

Location: COLORADO Slot: SLOT#12 AG 32N-31C-L (1037'FNL & 599'FEL SEC 32)  
 Field: WELD COUNTY (NAD83, TRUE NORTH) Well: AG 32N-31C-L  
 Facility: SEC.32-T06N-R66W Wellbore: AG 32N-31C-L.PWB

Plot reference wellpath is AG 32N-31C-L (REV-D.0) PWP	Grid System: NAD83 / Lambert Colorado SP, Northern Zone (501), US feet
True vertical depths are referenced to PRECISION 462 (20') (RKB)	* = Wellpath was transformed from a different geodetic datum
Measured depths are referenced to PRECISION 462 (20') (RKB)	North Reference: True north
PRECISION 462 (20') (RKB) to Mean Sea Level: 4726 feet	Scale: True distance
Mean Sea Level to Mud line (At Slot: SLOT#12 AG 32N-31C-L (1037'FNL & 599'FEL SEC 32)): 0 feet	Depths are in feet
Coordinates are in feet referenced to Slot	Created by: doddanna on 2017-12-20
	Database: WellArchitectDB





# Actual Wellpath Report

AG 32N-31C-L AWP

Page 1 of 10



REFERENCE WELLPATH IDENTIFICATION			
Operator	SRC ENERGY	Slot	SLOT#12 AG 32N-31C-L (1037'FNL & 599'FEL SEC 32)
Area	COLORADO	Well	AG 32N-31C-L
Field	WELD COUNTY (NAD83,TRUE NORTH)	Wellbore	AG 32N-31C-L AWB
Facility	SEC.32-T06N-R66W		

REPORT SETUP INFORMATION			
Projection System	NAD83 / Lambert Colorado SP, Northern Zone (501), US feet	Software System	WellArchitect® 5.0
North Reference	True	User	Doddanna
Scale	0.999963	Report Generated	12/20/2017 at 2:12:16 PM
Convergence at slot	0.46° East	Database/Source file	WellArchitectDB/AG_32N-31C-L_AWP.xml

WELLPATH LOCATION						
	Local coordinates		Grid coordinates		Geographic coordinates	
	North[ft]	East[ft]	Easting[US ft]	Northing[US ft]	Latitude	Longitude
Slot Location	-161.01	-149.75	3196328.59	1407219.30	40°26'56.670"N	104°47'40.409"W
Facility Reference Pt			3196477.05	1407381.48	40°26'58.261"N	104°47'38.472"W
Field Reference Pt			3171284.48	1426358.81	40°30'07.643"N	104°53'02.634"W

WELLPATH DATUM			
Calculation method	Minimum curvature	PRECISION 462 (20') (RKB) to Facility Vertical Datum	4726.00ft
Horizontal Reference Pt	Slot	PRECISION 462 (20') (RKB) to Mean Sea Level	4726.00ft
Vertical Reference Pt	PRECISION 462 (20') (RKB)	PRECISION 462 (20') (RKB) to Mud Line at Slot (SLOT#12 AG 32N-31C-L (1037'FNL & 599'FEL SEC 32))	4726.00ft
MD Reference Pt	PRECISION 462 (20') (RKB)	Section Origin	N 0.00, E 0.00 ft
Field Vertical Reference	Mean Sea Level	Section Azimuth	259.77°



# Actual Wellpath Report

AG 32N-31C-L AWP

Page 2 of 10



REFERENCE WELLPATH IDENTIFICATION			
Operator	SRC ENERGY	Slot	SLOT#12 AG 32N-31C-L (1037'FNL & 599'FEL SEC 32)
Area	COLORADO	Well	AG 32N-31C-L
Field	WELD COUNTY (NAD83, TRUE NORTH)	Wellbore	AG 32N-31C-L AWB
Facility	SEC.32-T06N-R66W		

WELLPATH DATA (202 stations) † = interpolated/extrapolated station								
MD [ft]	Inclination [°]	Azimuth [°]	TVD [ft]	Vert Sect [ft]	North [ft]	East [ft]	DLS [°/100ft]	Comments
0.00†	0.000	132.030	0.00	0.00	0.00	0.00	0.00	
20.00	0.000	132.030	20.00	0.00	0.00	0.00	0.00	
106.00	0.970	132.030	106.00	-0.45	-0.49	0.54	1.13	
193.00	0.940	134.000	192.98	-1.31	-1.48	1.60	0.05	
283.00	0.720	137.530	282.97	-2.05	-2.41	2.51	0.25	
375.00	1.010	124.370	374.96	-2.93	-3.29	3.57	0.38	
467.00	1.910	128.670	466.93	-4.52	-4.71	5.44	0.98	
557.00	3.750	127.980	556.82	-7.46	-7.45	8.93	2.04	
647.00	6.020	127.620	646.49	-12.59	-12.15	14.99	2.52	
737.00	8.180	135.380	735.79	-19.38	-19.59	23.23	2.62	
827.00	10.720	134.130	824.56	-27.87	-29.97	33.73	2.83	
917.00	12.480	136.370	912.72	-38.10	-42.84	46.45	2.02	
1007.00	13.570	140.920	1000.41	-48.55	-58.08	59.82	1.66	
1097.00	15.440	139.440	1087.54	-59.70	-75.38	74.27	2.12	
1187.00	16.500	139.180	1174.06	-72.25	-94.15	90.41	1.18	
1277.00	16.950	139.330	1260.25	-85.40	-113.77	107.32	0.50	
1367.00	17.450	140.480	1346.23	-98.65	-134.13	124.45	0.67	
1457.00	17.400	142.040	1432.10	-111.51	-155.15	141.32	0.52	
1547.00	17.610	143.070	1517.93	-123.89	-176.65	157.78	0.42	
1637.00	17.350	141.030	1603.78	-136.46	-197.96	174.39	0.74	
1711.00	16.520	139.600	1674.57	-147.05	-214.55	188.15	1.25	
1777.00	16.780	140.080	1737.80	-156.49	-229.01	200.35	0.45	
1870.00	17.220	140.910	1826.74	-169.78	-249.99	217.64	0.54	
1964.00	17.020	144.470	1916.57	-182.38	-271.98	234.41	1.13	
2056.00	17.550	149.400	2004.42	-192.96	-294.88	249.30	1.69	
2151.00	17.160	151.750	2095.10	-202.28	-319.55	263.22	0.84	
2244.00	17.370	155.550	2183.91	-209.93	-344.28	275.46	1.23	
2337.00	17.270	154.240	2272.70	-217.04	-369.35	287.21	0.43	
2431.00	17.650	155.360	2362.36	-224.32	-394.87	299.21	0.54	
2524.00	17.410	155.360	2451.05	-231.29	-420.33	310.89	0.26	



# Actual Wellpath Report

AG 32N-31C-L AWP

Page 3 of 10



REFERENCE WELLPATH IDENTIFICATION			
Operator	SRC ENERGY	Slot	SLOT#12 AG 32N-31C-L (1037'FNL & 599'FEL SEC 32)
Area	COLORADO	Well	AG 32N-31C-L
Field	WELD COUNTY (NAD83, TRUE NORTH)	Wellbore	AG 32N-31C-L AWB
Facility	SEC.32-T06N-R66W		

WELLPATH DATA (202 stations)								
MD [ft]	Inclination [°]	Azimuth [°]	TVD [ft]	Vert Sect [ft]	North [ft]	East [ft]	DLS [°/100ft]	Comments
2617.00	17.700	149.430	2539.72	-239.67	-445.15	323.88	1.95	
2712.00	19.590	141.400	2629.75	-252.26	-470.04	341.17	3.35	
2806.00	20.040	128.860	2718.22	-270.30	-492.47	363.55	4.54	
2900.00	16.360	120.890	2807.52	-290.83	-509.38	387.47	4.72	
2993.00	16.550	129.430	2896.72	-309.27	-524.52	408.94	2.61	
3085.00	16.270	136.750	2984.98	-324.78	-542.23	427.89	2.27	
3178.00	16.330	143.020	3074.25	-337.77	-562.16	444.69	1.89	
3272.00	16.490	141.630	3164.42	-350.00	-583.18	460.92	0.45	
3368.00	16.370	143.900	3256.50	-362.33	-604.79	477.34	0.68	
3461.00	16.360	143.110	3345.74	-373.93	-625.86	492.93	0.24	
3555.00	16.370	134.430	3435.94	-387.53	-645.72	510.34	2.60	
3648.00	16.330	122.100	3525.21	-404.78	-661.85	530.78	3.73	
3742.00	16.670	111.570	3615.36	-426.02	-673.83	554.52	3.20	
3836.00	17.090	112.070	3705.31	-449.15	-683.98	579.85	0.47	
3929.00	17.800	117.150	3794.03	-472.00	-695.60	605.17	1.81	
4023.00	17.880	118.070	3883.51	-494.74	-708.95	630.69	0.31	
4118.00	16.270	126.530	3974.34	-515.30	-723.73	654.25	3.11	
4212.00	17.000	141.280	4064.44	-530.89	-742.30	673.44	4.55	
4305.00	18.020	148.960	4153.15	-542.48	-765.24	689.36	2.71	
4399.00	18.000	153.120	4242.54	-551.81	-790.65	703.43	1.37	
4492.00	18.050	154.420	4330.98	-559.74	-816.46	716.14	0.44	
4585.00	18.110	148.090	4419.40	-568.89	-841.73	730.01	2.11	
4679.00	18.110	150.480	4508.74	-579.12	-866.84	744.93	0.79	
4773.00	18.040	146.070	4598.11	-589.79	-891.64	760.25	1.46	
4867.00	18.160	139.970	4687.46	-602.92	-914.93	777.80	2.02	
4961.00	17.910	131.760	4776.86	-619.11	-935.78	798.01	2.71	
5054.00	18.130	128.450	4865.30	-637.47	-954.30	820.01	1.13	
5147.00	17.660	130.340	4953.80	-655.98	-972.43	842.09	0.80	
5240.00	17.910	138.160	5042.37	-672.44	-992.22	862.38	2.58	
5332.00	17.880	141.030	5129.92	-686.64	-1013.74	880.70	0.96	



# Actual Wellpath Report

AG 32N-31C-L AWP

Page 4 of 10



REFERENCE WELLPATH IDENTIFICATION			
Operator	SRC ENERGY	Slot	SLOT#12 AG 32N-31C-L (1037'FNL & 599'FEL SEC 32)
Area	COLORADO	Well	AG 32N-31C-L
Field	WELD COUNTY (NAD83, TRUE NORTH)	Wellbore	AG 32N-31C-L AWB
Facility	SEC.32-T06N-R66W		

WELLPATH DATA (202 stations)								
MD [ft]	Inclination [°]	Azimuth [°]	TVD [ft]	Vert Sect [ft]	North [ft]	East [ft]	DLS [°/100ft]	Comments
5425.00	18.540	143.490	5218.26	-700.05	-1036.72	898.48	1.09	
5519.00	18.820	146.840	5307.31	-712.58	-1061.43	915.66	1.18	
5612.00	18.960	146.330	5395.31	-724.43	-1086.56	932.24	0.23	
5704.00	19.090	138.980	5482.29	-738.08	-1110.35	950.41	2.61	
5796.00	18.960	132.090	5569.28	-754.92	-1131.72	971.38	2.44	
5890.00	18.970	124.580	5658.19	-775.09	-1150.63	995.29	2.59	
5984.00	18.010	114.850	5747.36	-797.83	-1165.41	1021.06	3.43	
6078.00	17.870	115.210	5836.79	-821.47	-1177.66	1047.30	0.19	
6171.00	17.840	121.140	5925.32	-843.79	-1191.11	1072.40	1.95	
6264.00	15.940	134.960	6014.34	-861.78	-1207.51	1093.64	4.76	
6358.00	16.820	144.380	6104.54	-874.98	-1227.69	1110.70	2.97	
6450.00	16.870	151.830	6192.60	-884.80	-1250.28	1124.76	2.35	
6543.00	13.510	149.350	6282.34	-892.75	-1271.53	1136.67	3.68	
6637.00	12.960	189.660	6374.03	-892.99	-1291.41	1140.50	9.64	
6730.00	14.820	235.780	6464.57	-878.54	-1308.43	1128.88	11.75	
6823.00	23.000	252.870	6552.55	-849.56	-1320.50	1101.62	10.54	
6916.00	30.020	252.830	6635.72	-808.38	-1332.73	1061.98	7.55	
7009.00	38.130	244.520	6712.73	-757.47	-1351.99	1013.73	10.04	
7102.00	45.920	246.620	6781.76	-697.15	-1377.64	957.06	8.51	
7195.00	54.380	253.290	6841.34	-626.89	-1401.82	890.03	10.62	
7288.00	59.410	259.320	6892.15	-549.20	-1420.14	814.39	7.66	
7381.00	69.950	264.210	6931.89	-465.34	-1432.00	731.32	12.29	
7474.00	78.950	268.780	6956.80	-376.49	-1437.39	642.01	10.77	
7569.00	87.100	272.340	6968.34	-283.96	-1436.45	547.81	9.35	
7601.00	89.750	272.260	6969.21	-252.74	-1435.16	515.85	8.29	
7663.00	91.690	271.340	6968.44	-192.11	-1433.21	453.89	3.46	LANDING POINT (2483'FNL & 146'FEL, SEC.32)
7756.00	90.980	263.360	6966.27	-100.02	-1437.51	361.09	8.61	
7851.00	90.890	258.890	6964.71	-5.08	-1452.16	267.26	4.71	
7944.00	91.020	258.950	6963.16	87.89	-1470.03	176.01	0.15	
8037.00	90.990	265.780	6961.53	180.73	-1482.38	83.90	7.34	



# Actual Wellpath Report

AG 32N-31C-L AWP

Page 5 of 10



REFERENCE WELLPATH IDENTIFICATION			
Operator	SRC ENERGY	Slot	SLOT#12 AG 32N-31C-L (1037'FNL & 599'FEL SEC 32)
Area	COLORADO	Well	AG 32N-31C-L
Field	WELD COUNTY (NAD83, TRUE NORTH)	Wellbore	AG 32N-31C-L AWB
Facility	SEC.32-T06N-R66W		

WELLPATH DATA (202 stations)								
MD (ft)	Inclination (°)	Azimuth (°)	TVD (ft)	Vert Sect (ft)	North (ft)	East (ft)	DLS (°/100ft)	Comments
8131.00	91.050	267.450	6959.86	274.04	-1487.93	-9.92	1.78	
8225.00	91.020	265.540	6958.16	367.37	-1493.67	-103.72	2.03	
8318.00	91.390	263.840	6956.20	460.01	-1502.28	-196.30	1.87	
8412.00	91.230	264.780	6954.05	553.68	-1511.59	-289.81	1.01	
8505.00	90.370	267.310	6952.76	646.11	-1518.01	-382.57	2.87	
8598.00	89.780	268.160	6952.63	738.21	-1521.68	-475.49	1.11	
8691.00	89.820	268.700	6952.96	830.15	-1524.23	-568.46	0.58	
8784.00	89.820	268.540	6953.25	922.04	-1526.47	-661.43	0.17	
8877.00	90.460	269.410	6953.02	1013.84	-1528.13	-754.42	1.16	
8970.00	90.400	268.560	6952.33	1105.64	-1529.78	-847.40	0.92	
9063.00	90.550	269.080	6951.55	1197.48	-1531.70	-940.37	0.58	
9156.00	90.460	269.510	6950.74	1289.19	-1532.84	-1033.36	0.47	
9251.00	91.290	269.010	6949.28	1382.88	-1534.07	-1128.34	1.02	
9345.00	91.290	266.050	6947.17	1475.98	-1538.12	-1222.22	3.15	
9440.00	90.580	267.160	6945.62	1570.29	-1543.74	-1317.04	1.39	
9535.00	89.450	270.150	6945.59	1664.14	-1545.97	-1412.00	3.36	
9628.00	89.380	269.700	6946.54	1755.68	-1546.09	-1505.00	0.49	
9722.00	89.290	269.320	6947.63	1848.32	-1546.90	-1598.99	0.42	
9814.00	90.340	268.950	6947.93	1939.09	-1548.29	-1690.97	1.21	
9909.00	90.310	270.580	6947.39	2032.64	-1548.68	-1785.97	1.72	
10004.00	90.180	266.200	6946.98	2126.55	-1551.34	-1880.91	4.61	
10096.00	90.150	265.230	6946.72	2218.05	-1558.22	-1972.65	1.05	
10188.00	90.150	263.880	6946.48	2309.73	-1566.95	-2064.23	1.47	
10280.00	90.580	265.390	6945.89	2401.39	-1575.55	-2155.82	1.71	
10373.00	90.430	265.820	6945.07	2493.90	-1582.68	-2248.55	0.49	
10465.00	90.310	269.360	6944.48	2585.03	-1586.54	-2340.45	3.85	
10558.00	90.460	272.170	6943.85	2676.31	-1585.30	-2433.43	3.03	
10650.00	90.400	272.350	6943.16	2766.13	-1581.68	-2525.35	0.21	
10743.00	90.590	272.720	6942.36	2856.83	-1577.56	-2618.26	0.45	
10836.00	90.370	271.560	6941.58	2947.67	-1574.09	-2711.19	1.27	



# Actual Wellpath Report

AG 32N-31C-L AWP

Page 6 of 10



REFERENCE WELLPATH IDENTIFICATION			
Operator	SRC ENERGY	Slot	SLOT#12 AG 32N-31C-L (1037'FNL & 599'FEL SEC 32)
Area	COLORADO	Well	AG 32N-31C-L
Field	WELD COUNTY (NAD83, TRUE NORTH)	Wellbore	AG 32N-31C-L AWB
Facility	SEC.32-T06N-R66W		

WELLPATH DATA (202 stations)								
MD (ft)	Inclination (°)	Azimuth (°)	TVD (ft)	Vert Sect (ft)	North (ft)	East (ft)	DLS (°/100ft)	Comments
10929.00	90.280	269.260	6941.05	3039.06	-1573.42	-2804.18	2.47	
11021.00	90.280	266.740	6940.60	3130.10	-1576.63	-2896.11	2.74	
11114.00	90.250	266.900	6940.17	3222.40	-1581.79	-2988.97	0.18	
11208.00	90.250	267.770	6939.76	3315.58	-1586.16	-3082.87	0.93	
11301.00	90.520	268.530	6939.14	3407.58	-1589.17	-3175.82	0.87	
11395.00	90.520	268.190	6938.29	3500.52	-1591.86	-3269.77	0.36	
11489.00	90.430	267.930	6937.51	3593.54	-1595.04	-3363.72	0.29	
11582.00	90.400	268.170	6936.83	3685.57	-1598.20	-3456.66	0.26	
11677.00	90.310	267.060	6936.24	3779.67	-1602.16	-3551.57	1.17	
11770.00	90.550	266.890	6935.55	3871.94	-1607.06	-3644.44	0.32	
11863.00	90.370	267.340	6934.80	3964.17	-1611.74	-3737.32	0.52	
11956.00	90.370	267.030	6934.20	4056.39	-1616.31	-3830.21	0.33	
12051.00	90.430	265.910	6933.54	4150.74	-1622.16	-3925.02	1.18	
12144.00	90.120	265.180	6933.09	4243.26	-1629.38	-4017.74	0.85	
12239.00	90.180	263.460	6932.84	4337.96	-1638.79	-4112.27	1.81	
12334.00	90.150	263.400	6932.57	4432.76	-1649.66	-4206.64	0.07	
12428.00	90.430	260.200	6932.09	4526.69	-1663.06	-4299.67	3.42	
12521.00	90.430	265.500	6931.39	4619.52	-1674.63	-4391.91	5.70	
12615.00	90.370	271.800	6930.74	4712.35	-1676.85	-4485.84	6.70	
12710.00	90.280	271.750	6930.20	4805.27	-1673.90	-4580.79	0.11	
12804.00	90.520	270.280	6929.54	4897.46	-1672.24	-4674.77	1.58	
12898.00	90.400	270.050	6928.79	4989.91	-1671.97	-4768.77	0.28	
12992.00	90.220	269.280	6928.28	5082.51	-1672.52	-4862.76	0.84	
13085.00	90.150	267.880	6927.98	5174.41	-1674.82	-4955.73	1.51	
13179.00	90.310	264.660	6927.60	5267.79	-1680.94	-5049.52	3.43	
13271.00	90.490	268.940	6926.96	5359.08	-1686.07	-5141.35	4.66	
13365.00	90.490	266.820	6926.15	5452.13	-1689.55	-5235.28	2.26	
13457.00	90.250	268.280	6925.56	5543.28	-1693.48	-5327.19	1.61	
13550.00	90.340	269.580	6925.08	5635.09	-1695.22	-5420.17	1.40	
13644.00	90.460	269.480	6924.42	5727.72	-1695.99	-5514.16	0.17	



# Actual Wellpath Report

AG 32N-31C-L AWP

Page 7 of 10



REFERENCE WELLPATH IDENTIFICATION			
Operator	SRC ENERGY	Slot	SLOT#12 AG 32N-31C-L (1037'FNL & 599'FEL SEC 32)
Area	COLORADO	Well	AG 32N-31C-L
Field	WELD COUNTY (NAD83, TRUE NORTH)	Wellbore	AG 32N-31C-L AWB
Facility	SEC.32-T06N-R66W		

WELLPATH DATA (202 stations)								
MD (ft)	Inclination (°)	Azimuth (°)	TVD (ft)	Vert Sect (ft)	North (ft)	East (ft)	DLS (°/100ft)	Comments
13737.00	90.250	269.690	6923.85	5819.36	-1696.66	-5607.16	0.32	
13831.00	90.280	269.620	6923.41	5911.96	-1697.23	-5701.16	0.08	
13924.00	90.280	269.370	6922.96	6003.63	-1698.05	-5794.15	0.27	
14016.00	90.220	268.820	6922.56	6094.41	-1699.50	-5886.14	0.60	
14109.00	89.910	270.020	6922.45	6186.09	-1700.44	-5979.13	1.33	
14202.00	90.060	268.570	6922.48	6277.81	-1701.59	-6072.12	1.57	
14295.00	90.120	267.330	6922.33	6369.86	-1704.91	-6165.06	1.33	
14388.00	89.850	266.490	6922.35	6462.13	-1709.92	-6257.93	0.95	
14482.00	90.180	265.900	6922.33	6555.54	-1716.16	-6351.72	0.72	
14575.00	89.940	265.880	6922.23	6648.01	-1722.83	-6444.48	0.26	
14669.00	89.910	263.180	6922.35	6741.68	-1731.79	-6538.04	2.87	
14763.00	90.120	264.300	6922.33	6835.45	-1742.04	-6631.48	1.21	
14858.00	90.430	267.430	6921.87	6929.90	-1748.89	-6726.22	3.31	
14952.00	90.520	268.970	6921.09	7022.88	-1751.84	-6820.17	1.64	
15044.00	90.030	267.520	6920.65	7113.87	-1754.66	-6912.12	1.66	
15139.00	89.820	266.310	6920.78	7208.13	-1759.77	-7006.98	1.29	
15233.00	90.310	267.270	6920.67	7301.43	-1765.03	-7100.83	1.15	
15328.00	90.000	266.630	6920.41	7395.68	-1770.09	-7195.70	0.75	
15421.00	90.620	267.790	6919.91	7487.89	-1774.61	-7288.58	1.41	
15515.00	89.820	266.460	6919.55	7581.12	-1779.33	-7382.46	1.65	
15608.00	89.720	267.360	6919.92	7673.39	-1784.34	-7475.32	0.97	
15703.00	90.400	267.500	6919.82	7767.54	-1788.60	-7570.23	0.73	
15797.00	90.460	269.200	6919.12	7860.49	-1791.31	-7664.18	1.81	
15892.00	89.660	266.960	6919.02	7954.48	-1794.49	-7759.12	2.50	
15984.00	89.540	267.170	6919.66	8045.73	-1799.20	-7851.00	0.26	
16077.00	90.060	270.520	6919.99	8137.56	-1801.08	-7943.97	3.65	
16169.00	90.490	270.150	6919.54	8228.00	-1800.54	-8035.96	0.62	
16261.00	91.170	271.830	6918.21	8318.22	-1798.95	-8127.94	1.97	
16355.00	91.320	270.520	6916.17	8410.34	-1797.02	-8221.89	1.40	
16449.00	90.180	267.030	6914.94	8503.16	-1799.03	-8315.85	3.91	



# Actual Wellpath Report

AG 32N-31C-L AWP

Page 8 of 10



REFERENCE WELLPATH IDENTIFICATION			
Operator	SRC ENERGY	Slot	SLOT#12 AG 32N-31C-L (1037'FNL & 599'FEL SEC 32)
Area	COLORADO	Well	AG 32N-31C-L
Field	WELD COUNTY (NAD83, TRUE NORTH)	Wellbore	AG 32N-31C-L AWB
Facility	SEC.32-T06N-R66W		

WELLPATH DATA (202 stations)								
MD (ft)	Inclination [°]	Azimuth [°]	TVD (ft)	Vert Sect (ft)	North (ft)	East (ft)	DLS [°/100ft]	Comments
16542.00	89.880	266.090	6914.89	8595.51	-1804.61	-8408.68	1.06	
16636.00	89.080	265.190	6915.74	8689.01	-1811.76	-8502.40	1.28	
16729.00	90.460	271.840	6916.12	8780.87	-1814.16	-8595.31	7.30	
16822.00	89.630	272.630	6916.04	8871.68	-1810.54	-8688.24	1.23	
16915.00	88.950	268.540	6917.20	8963.00	-1809.59	-8781.21	4.46	
17009.00	90.000	268.340	6918.06	9055.92	-1812.15	-8875.17	1.14	
17102.00	90.520	265.960	6917.64	9148.14	-1816.77	-8968.05	2.62	
17196.00	90.340	264.730	6916.93	9241.69	-1824.40	-9061.73	1.32	
17290.00	89.940	264.580	6916.70	9335.35	-1833.16	-9155.32	0.45	
17386.00	89.010	263.690	6917.58	9431.06	-1842.96	-9250.81	1.34	
17480.00	88.950	264.520	6919.25	9524.78	-1852.62	-9344.30	0.89	
17573.00	88.860	265.670	6921.03	9617.36	-1860.57	-9436.94	1.24	
17668.00	88.860	264.840	6922.92	9711.91	-1868.42	-9531.60	0.87	
17760.00	89.820	268.340	6923.98	9803.23	-1873.90	-9623.41	3.94	
17854.00	89.850	268.880	6924.25	9896.12	-1876.18	-9717.38	0.58	
17948.00	89.910	265.510	6924.45	9989.31	-1880.78	-9811.26	3.59	
18042.00	89.780	266.040	6924.70	10082.80	-1887.70	-9905.00	0.58	
18136.00	89.570	266.460	6925.24	10176.19	-1893.85	-9998.80	0.50	
18230.00	89.690	266.600	6925.84	10269.54	-1899.54	-10092.62	0.20	
18416.00	89.570	267.350	6927.04	10454.06	-1909.35	-10278.36	0.41	
18603.00	89.910	269.330	6927.89	10638.96	-1914.77	-10465.27	1.07	LAST BHI MWD SURVEY (2510'FNL & 46'FWL, SEC.31)
18640.00	89.910	269.330	6927.95	10675.45	-1915.20	-10502.27	0.00	PROJECTION TO BIT (2510'FNL & 67'FWL, SEC.31)



# Actual Wellpath Report

AG 32N-31C-L AWP

Page 9 of 10



REFERENCE WELLPATH IDENTIFICATION			
Operator	SRC ENERGY	Slot	SLOT#12 AG 32N-31C-L (1037'FNL & 599'FEL SEC 32)
Area	COLORADO	Well	AG 32N-31C-L
Field	WELD COUNTY (NAD83, TRUE NORTH)	Wellbore	AG 32N-31C-L AWB
Facility	SEC.32-T06N-R66W		

HOLE & CASING SECTIONS - Ref Wellbore: AG 32N-31C-L AWB Ref Wellpath: AG 32N-31C-L AWP									
String/Diameter	Start MD [ft]	End MD [ft]	Interval [ft]	Start TVD [ft]	End TVD [ft]	Start N/S [ft]	Start E/W [ft]	End N/S [ft]	End E/W [ft]
13.5in Open Hole	20.00	1756.00	1736.00	20.00	1717.69	0.00	0.00	-224.37	196.46
9.625in Casing Surface	20.00	1756.00	1736.00	20.00	1717.69	0.00	0.00	-224.37	196.46
8.5in Open Hole	1756.00	18640.00	16884.00	1717.69	6927.95	-224.37	196.46	-1915.20	-10502.27

TARGETS								
Name	TVD [ft]	North [ft]	East [ft]	Grid East [US ft]	Grid North [US ft]	Latitude	Longitude	Shape
SEC.31-T06N-R66W	-18.00	-2402.69	-11106.27	3185242.22	1404728.43	40°26'32.903"N	104°50'04.052"W	polygon
SEC.32-T06N-R66W	-18.00	-2402.69	-11106.27	3185242.22	1404728.43	40°26'32.903"N	104°50'04.052"W	polygon
AG 32N-31C-L BHL ON PLAT REV-2 (2489'FNL & 75'FWL, SEC.31)	6934.23	-1894.03	-10494.00	3185850.40	1405241.92	40°26'37.932"N	104°49'56.136"W	point
AG 32N-31C-L TOP OF PROD REV-2 (2509'FNL & 75'FEL, SEC.32)	6967.79	-1459.48	524.66	3196864.83	1405764.09	40°26'42.248"N	104°47'33.623"W	point
AG 32N-31C-L BHL REV-1 ON PLAT (NIO-C, 2489'FNL & 75'FWL SEC 31)	6980.00	-1894.03	-10494.00	3185850.40	1405241.92	40°26'37.932"N	104°49'56.136"W	circle
AG 32N-31C-L TOP OF PROD (2509'FNL & 75'FEL SEC 32)	6980.00	-1459.48	524.66	3196864.83	1405764.09	40°26'42.248"N	104°47'33.623"W	circle

WELLPATH COMPOSITION - Ref Wellbore: AG 32N-31C-L AWB Ref Wellpath: AG 32N-31C-L AWP				
Start MD [ft]	End MD [ft]	Positional Uncertainty Model	Log Name/Comment	Wellbore
20.00	1711.00	Custom BHI NaviTrak (Standard Rotating+Axial Corr) (Rockies 0.03Gt model)	BHI NAVITRAK W/APS EM 13.5" (STD ROTATING, AXIAL, ROCKIES GT)<106-1711>	AG 32N-31C-L AWB
1711.00	18603.00	Custom BHI AutoTrak Curve (IFR1, Short) (Rockies 0.03Gt model)	8.5" MONOBORE: 6 3/4" AUTOTRAK CURVE <1777'-18603>	AG 32N-31C-L AWB
18603.00	18640.00	Blind Drilling (std)	Projection to bit	AG 32N-31C-L AWB



# Actual Wellpath Report

AG 32N-31C-L AWP

Page 10 of 10



REFERENCE WELLPATH IDENTIFICATION			
Operator	SRC ENERGY	Slot	SLOT#12 AG 32N-31C-L (1037'FNL & 599'FEL SEC 32)
Area	COLORADO	Well	AG 32N-31C-L
Field	WELD COUNTY (NAD83, TRUE NORTH)	Wellbore	AG 32N-31C-L AWB
Facility	SEC.32-T06N-R66W		

WELLPATH COMMENTS				
MD [ft]	Inclination [°]	Azimuth [°]	TVD [ft]	Comment
7663.00	91.690	271.340	6968.44	LANDING POINT (2483'FNL & 146'FEL, SEC.32)
18603.00	89.910	269.330	6927.89	LAST BHI MWD SURVEY (2510'FNL & 46'FWL, SEC.31)
18640.00	89.910	269.330	6927.95	PROJECTION TO BIT (2510'FNL & 67'FWL, SEC.31)