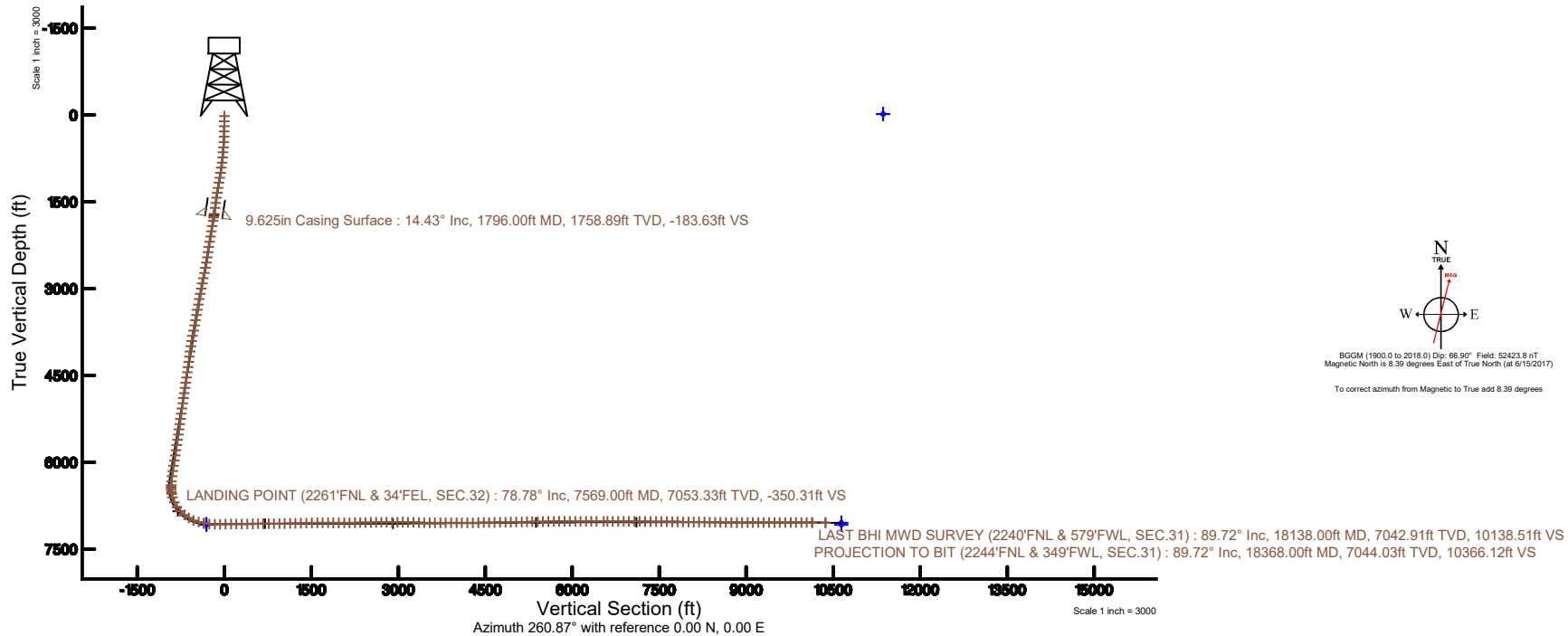
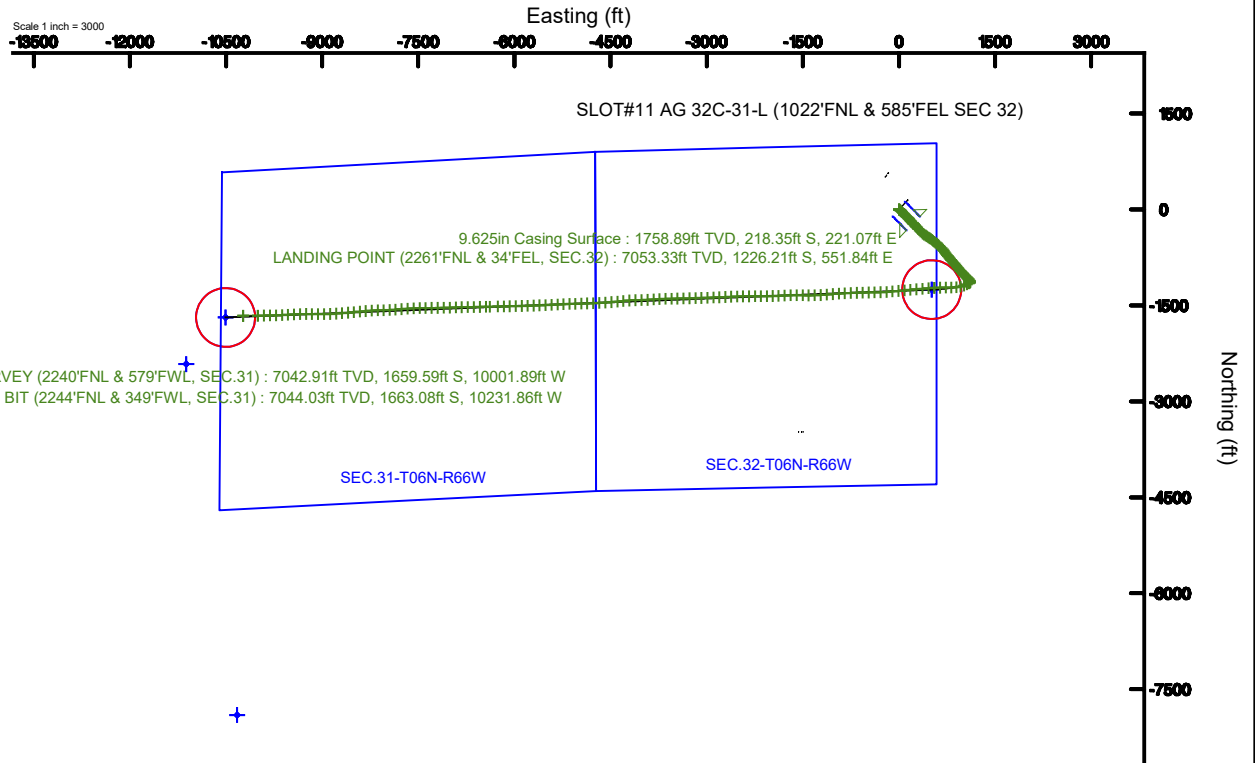


SRC ENERGY

Location: COLORADO Slot: SLOT#11 AG 32C-31-L (1022'FNL & 585'FEL SEC 32)
Field: WELD COUNTY (NAD83, TRUE NORTH) Well: AG 32C-31-L
Facility: SEC.32-T06N-R66W Wellbore: AG 32C-31-L PWB

Plot reference wellpath is AG 32C-31-L, REV-D.0) PWP	Grid System: NAD83 / Lambert Colorado SP, Northern Zone (501), US feet
True vertical depths are referenced to PRECISION 462 (20') (RKB)	* = Wellpath was transformed from a different geodetic datum
Measured depths are referenced to PRECISION 462 (20') (RKB)	North Reference: True north
PRECISION 462 (20') (RKB) to Mean Sea Level: 4726 feet	Scale: True distance
Mean Sea Level to Mud line (At Slot: SLOT#11 AG 32C-31-L (1022'FNL & 585'FEL SEC 32)): 0 feet	Depths are in feet
Coordinates are in feet referenced to Slot	Created by: doddanna on 2017-12-20
	Database: WellArchitectDB





Actual Wellpath Report

AG 32C-31-L AWP

Page 1 of 10



REFERENCE WELLPATH IDENTIFICATION

Operator	SRC ENERGY	Slot	SLOT#11 AG 32C-31-L (1022'FNL & 585'FEL SEC 32)
Area	COLORADO	Well	AG 32C-31-L
Field	WELD COUNTY (NAD83,TRUE NORTH)	Wellbore	AG 32C-31-L AWB
Facility	SEC.32-T06N-R66W		

REPORT SETUP INFORMATION

Projection System	NAD83 / Lambert Colorado SP, Northern Zone (501), US feet	Software System	WellArchitect® 5.0
North Reference	True	User	Doddanna
Scale	0.999963	Report Generated	12/20/2017 at 1:51:26 PM
Convergence at slot	0.46° East	Database/Source file	WellArchitectDB/AG_32C-31-L_AWP.xml

WELLPATH LOCATION

	Local coordinates		Grid coordinates		Geographic coordinates	
	North[ft]	East[ft]	Easting[US ft]	Northing[US ft]	Latitude	Longitude
Slot Location	-146.43	-136.07	3196342.16	1407233.98	40°26'56.814"N	104°47'40.232"W
Facility Reference Pt			3196477.05	1407381.48	40°26'58.261"N	104°47'38.472"W
Field Reference Pt			3171284.48	1426358.81	40°30'07.643"N	104°53'02.634"W

WELLPATH DATUM

Calculation method	Minimum curvature	PRECISION 462 (20') (RKB) to Facility Vertical Datum	4726.00ft
Horizontal Reference Pt	Slot	PRECISION 462 (20') (RKB) to Mean Sea Level	4726.00ft
Vertical Reference Pt	PRECISION 462 (20') (RKB)	PRECISION 462 (20') (RKB) to Mud Line at Slot (SLOT#11 AG 32C-31-L (1022'FNL & 585'FEL SEC 32))	4726.00ft
MD Reference Pt	PRECISION 462 (20') (RKB)	Section Origin	N 0.00, E 0.00 ft
Field Vertical Reference	Mean Sea Level	Section Azimuth	260.87°



SRC ENERGY

Actual Wellpath Report

AG 32C-31-L AWP

Page 2 of 10

**BAKER
HUGHES****REFERENCE WELLPATH IDENTIFICATION**

Operator	SRC ENERGY	Slot	SLOT#11 AG 32C-31-L (1022'FNL & 585'FEL SEC 32)
Area	COLORADO	Well	AG 32C-31-L
Field	WELD COUNTY (NAD83, TRUE NORTH)	Wellbore	AG 32C-31-L AWB
Facility	SEC.32-T06N-R66W		

WELLPATH DATA (202 stations) † = interpolated/extrapolated station

MD [ft]	Inclination [°]	Azimuth [°]	TVD [ft]	Vert Sect [ft]	North [ft]	East [ft]	DLS [°/100ft]	Comments
0.00†	0.000	20.050	0.00	0.00	0.00	0.00	0.00	
20.00	0.000	20.050	20.00	0.00	0.00	0.00	0.00	
106.00	0.620	20.050	106.00	-0.23	0.44	0.16	0.72	
193.00	0.680	21.350	192.99	-0.72	1.36	0.51	0.07	
283.00	1.040	116.230	282.99	-1.66	1.50	1.44	1.43	
375.00	2.720	123.100	374.93	-3.95	-0.06	4.01	1.84	
467.00	4.900	126.000	466.72	-8.34	-3.57	9.02	2.38	
557.00	6.410	128.420	556.28	-14.44	-8.95	16.07	1.70	
647.00	8.260	136.570	645.55	-21.48	-16.77	24.45	2.35	
737.00	10.580	138.220	734.33	-29.58	-27.62	34.40	2.59	
827.00	12.260	136.100	822.54	-39.49	-40.67	46.53	1.92	
917.00	14.130	134.680	910.16	-51.43	-55.28	60.97	2.11	
1007.00	15.330	134.640	997.20	-64.95	-71.37	77.25	1.33	
1097.00	15.710	133.600	1083.92	-79.36	-88.13	94.54	0.52	
1187.00	15.960	135.140	1170.51	-93.96	-105.30	112.09	0.54	
1277.00	15.130	135.390	1257.21	-108.01	-122.44	129.07	0.93	
1367.00	15.090	137.910	1344.10	-121.20	-139.49	145.17	0.73	
1457.00	14.950	137.770	1431.03	-133.91	-156.78	160.82	0.16	
1547.00	14.870	137.440	1518.00	-146.61	-173.88	176.43	0.13	
1637.00	14.750	135.130	1605.01	-159.67	-190.51	192.33	0.67	
1746.00	14.510	133.410	1710.47	-176.08	-209.73	212.04	0.46	
1806.00	14.410	134.070	1768.57	-185.12	-220.08	222.86	0.32	
1869.00	15.500	136.520	1829.44	-194.57	-231.65	234.29	2.00	
1961.00	15.870	136.650	1918.01	-208.58	-249.71	251.38	0.40	
2055.00	15.930	135.990	2008.42	-223.18	-268.34	269.17	0.20	
2149.00	15.840	135.270	2098.83	-238.03	-286.73	287.16	0.23	
2241.00	15.740	136.770	2187.36	-252.34	-304.74	304.54	0.46	
2335.00	15.850	137.490	2277.81	-266.55	-323.49	321.95	0.24	
2429.00	15.950	138.840	2368.21	-280.46	-342.68	339.12	0.41	
2522.00	15.250	137.510	2457.79	-293.96	-361.32	355.79	0.85	



SRC ENERGY

Actual Wellpath Report

AG 32C-31-L AWP

Page 3 of 10

**BAKER
HUGHES****REFERENCE WELLPATH IDENTIFICATION**

Operator	SRC ENERGY	Slot	SLOT#11 AG 32C-31-L (1022'FNL & 585'FEL SEC 32)
Area	COLORADO	Well	AG 32C-31-L
Field	WELD COUNTY (NAD83, TRUE NORTH)	Wellbore	AG 32C-31-L AWB
Facility	SEC.32-T06N-R66W		

WELLPATH DATA (202 stations)

MD [ft]	Inclination [°]	Azimuth [°]	TVD [ft]	Vert Sect [ft]	North [ft]	East [ft]	DLS [°/100ft]	Comments
2616.00	15.570	134.600	2548.41	-308.22	-379.29	373.13	0.89	
2710.00	15.690	123.480	2638.95	-325.05	-395.17	392.72	3.19	
2804.00	15.000	118.040	2729.60	-344.10	-407.90	414.06	1.70	
2898.00	15.150	122.630	2820.37	-362.95	-420.24	435.14	1.28	
2990.00	15.150	125.300	2909.18	-380.51	-433.67	455.07	0.76	
3083.00	14.750	124.650	2999.03	-397.73	-447.42	474.73	0.47	
3177.00	14.480	124.470	3089.99	-414.88	-460.88	494.26	0.29	
3272.00	15.020	126.390	3181.86	-432.11	-474.90	513.96	0.77	
3366.00	14.830	128.500	3272.69	-448.75	-489.62	533.18	0.61	
3459.00	14.850	129.780	3362.58	-464.61	-504.65	551.66	0.35	
3553.00	15.200	129.870	3453.37	-480.61	-520.26	570.37	0.37	
3647.00	15.870	129.340	3543.94	-497.21	-536.31	589.77	0.73	
3740.00	16.310	131.780	3633.29	-513.88	-553.07	609.34	0.87	
3833.00	16.250	134.110	3722.57	-529.90	-570.83	628.42	0.71	
3927.00	16.370	133.550	3812.78	-545.80	-589.11	647.47	0.21	
4022.00	16.250	135.920	3903.96	-561.53	-607.88	666.42	0.71	
4116.00	16.220	139.250	3994.21	-575.95	-627.27	684.14	0.99	
4210.00	16.270	141.980	4084.46	-589.20	-647.59	700.82	0.81	
4304.00	16.290	143.870	4174.69	-601.55	-668.61	716.70	0.56	
4396.00	15.600	142.740	4263.15	-613.24	-688.88	731.80	0.82	
4490.00	16.250	142.700	4353.55	-625.41	-709.40	747.42	0.69	
4583.00	15.570	141.410	4442.98	-637.69	-729.51	763.09	0.82	
4677.00	16.210	139.750	4533.39	-650.67	-749.39	779.44	0.84	
4772.00	16.210	139.460	4624.62	-664.44	-769.58	796.62	0.09	
4865.00	16.300	137.990	4713.90	-678.29	-789.14	813.80	0.45	
4959.00	16.240	140.150	4804.13	-692.16	-809.04	831.05	0.65	
5051.00	16.010	140.020	4892.51	-705.24	-828.64	847.44	0.25	
5144.00	14.600	138.520	4982.21	-718.09	-847.25	863.45	1.57	
5237.00	14.990	139.690	5072.13	-730.59	-865.20	878.99	0.53	
5330.00	15.290	140.890	5161.90	-742.95	-883.88	894.51	0.47	



SRC ENERGY

Actual Wellpath Report

AG 32C-31-L AWP

Page 4 of 10

BAKER
HUGHES

REFERENCE WELLPATH IDENTIFICATION

Operator	SRC ENERGY	Slot	SLOT#11 AG 32C-31-L (1022°FNL & 585°FEL SEC 32)
Area	COLORADO	Well	AG 32C-31-L
Field	WELD COUNTY (NAD83, TRUE NORTH)	Wellbore	AG 32C-31-L AWB
Facility	SEC.32-T06N-R66W		

WELLPATH DATA (202 stations)

MD [ft]	Inclination [°]	Azimuth [°]	TVD [ft]	Vert Sect [ft]	North [ft]	East [ft]	DLS [°/100ft]	Comments
5423.00	15.530	141.940	5251.56	-755.10	-903.20	909.92	0.40	
5516.00	16.140	141.680	5341.03	-767.42	-923.15	925.61	0.66	
5609.00	15.870	140.070	5430.43	-780.24	-943.04	941.79	0.56	
5701.00	16.160	138.940	5518.86	-793.45	-962.34	958.27	0.46	
5794.00	15.300	137.960	5608.37	-806.96	-981.21	974.99	0.97	
5888.00	13.870	135.860	5699.34	-820.17	-998.51	991.14	1.62	
5983.00	13.920	134.480	5791.56	-833.48	-1014.69	1007.22	0.35	
6075.00	14.540	133.570	5880.74	-847.05	-1030.40	1023.49	0.72	
6169.00	14.680	133.340	5971.70	-861.45	-1046.71	1040.70	0.16	
6263.00	14.020	132.960	6062.77	-875.70	-1062.64	1057.69	0.71	
6355.00	12.700	133.730	6152.27	-888.66	-1077.23	1073.16	1.45	
6447.00	13.590	140.260	6241.87	-900.27	-1092.53	1087.38	1.88	
6541.00	14.070	148.110	6333.15	-910.31	-1110.72	1100.47	2.06	
6603.00	10.780	152.370	6393.69	-915.07	-1122.26	1107.15	5.51	
6634.00	8.980	162.210	6424.23	-916.36	-1127.14	1109.23	7.94	
6654.00	8.380	174.390	6444.00	-916.50	-1130.07	1109.85	9.65	
6684.00	8.520	191.070	6473.68	-915.60	-1134.43	1109.64	8.16	
6727.00	9.690	213.260	6516.15	-912.06	-1140.59	1107.04	8.54	
6759.00	11.490	227.560	6547.61	-907.58	-1144.99	1103.21	9.91	
6821.00	17.060	237.340	6607.68	-894.07	-1154.07	1090.98	9.76	
6913.00	26.320	242.620	6693.08	-862.25	-1170.77	1061.44	10.28	
7007.00	35.170	248.020	6773.81	-815.97	-1190.53	1017.74	9.85	
7099.00	43.380	258.090	6845.04	-758.42	-1207.01	962.10	11.27	
7193.00	50.840	266.520	6909.03	-689.75	-1215.91	893.98	10.29	
7287.00	58.930	268.570	6963.06	-613.45	-1219.13	817.23	8.79	
7381.00	68.470	268.750	7004.66	-530.06	-1221.10	733.08	10.15	
7475.00	76.320	268.630	7033.07	-441.36	-1223.14	643.57	8.35	
7569.00	78.780	267.550	7053.33	-350.31	-1226.21	551.84	2.85	LANDING POINT (2261°FNL & 34°FEL, SEC.32)
7663.00	84.910	265.830	7066.66	-257.79	-1231.59	459.00	6.77	
7757.00	90.430	264.980	7070.48	-164.20	-1239.11	365.41	5.94	



SRC ENERGY

Actual Wellpath Report

AG 32C-31-L AWP

Page 5 of 10



**BAKER
HUGHES**

REFERENCE WELLPATH IDENTIFICATION

Operator	SRC ENERGY	Slot	SLOT#11 AG 32C-31-L (1022'FNL & 585'FEL SEC 32)
Area	COLORADO	Well	AG 32C-31-L
Field	WELD COUNTY (NAD83,TRUE NORTH)	Wellbore	AG 32C-31-L AWB
Facility	SEC.32-T06N-R66W		

WELLPATH DATA (202 stations)

MD (ft)	Inclination [°]	Azimuth [°]	TVD (ft)	Vert Sect (ft)	North (ft)	East (ft)	DLS [°/100ft]	Comments
7850.00	90.710	264.500	7069.56	-71.41	-1247.64	272.81	0.60	
7944.00	90.620	264.820	7068.47	22.38	-1256.38	179.22	0.35	
8037.00	90.650	264.450	7067.44	115.17	-1265.08	86.64	0.40	
8130.00	90.550	265.210	7066.46	207.94	-1273.46	-5.98	0.82	
8226.00	90.620	264.460	7065.48	303.71	-1282.10	-101.58	0.78	
8319.00	90.370	266.540	7064.68	396.39	-1289.40	-194.29	2.25	
8412.00	90.580	268.400	7063.91	488.77	-1293.50	-287.19	2.01	
8505.00	90.620	268.610	7062.93	580.94	-1295.93	-380.15	0.23	
8598.00	90.370	268.760	7062.13	673.07	-1298.06	-473.12	0.31	
8690.00	90.030	268.510	7061.81	764.23	-1300.25	-565.10	0.46	
8783.00	89.940	268.540	7061.83	856.40	-1302.65	-658.07	0.10	
8877.00	91.050	268.190	7061.02	949.59	-1305.33	-752.02	1.24	
8970.00	91.020	266.930	7059.34	1041.94	-1309.29	-844.92	1.36	
9063.00	91.050	265.670	7057.66	1134.51	-1315.29	-937.71	1.36	
9156.00	90.920	264.800	7056.06	1227.23	-1323.01	-1030.38	0.95	
9251.00	92.030	265.160	7053.62	1321.95	-1331.32	-1124.98	1.23	
9346.00	92.000	267.180	7050.28	1416.48	-1337.66	-1219.70	2.13	
9441.00	90.450	267.690	7048.25	1510.83	-1341.91	-1314.58	1.72	
9535.00	89.970	269.880	7047.90	1603.93	-1343.91	-1408.55	2.39	
9629.00	89.880	272.580	7048.02	1696.39	-1341.89	-1502.52	2.87	
9721.00	90.030	270.340	7048.10	1786.82	-1339.54	-1594.49	2.44	
9816.00	89.880	267.360	7048.17	1880.89	-1341.45	-1689.46	3.14	
9911.00	89.970	267.350	7048.29	1975.28	-1345.84	-1784.36	0.10	
10005.00	91.020	267.560	7047.48	2068.65	-1350.01	-1878.26	1.14	
10097.00	91.140	267.850	7045.75	2159.98	-1353.69	-1970.17	0.34	
10189.00	91.050	268.510	7043.99	2251.22	-1356.61	-2062.11	0.72	
10281.00	91.110	270.880	7042.26	2342.11	-1357.10	-2154.08	2.58	
10374.00	90.990	269.480	7040.55	2433.87	-1356.81	-2247.06	1.51	
10467.00	90.950	269.400	7038.98	2525.81	-1357.72	-2340.04	0.10	
10559.00	91.110	269.850	7037.32	2616.73	-1358.32	-2432.03	0.52	



SRC ENERGY

Actual Wellpath Report

AG 32C-31-L AWP

Page 6 of 10

**BAKER
HUGHES****REFERENCE WELLPATH IDENTIFICATION**

Operator	SRC ENERGY	Slot	SLOT#11 AG 32C-31-L (1022'FNL & 585'FEL SEC 32)
Area	COLORADO	Well	AG 32C-31-L
Field	WELD COUNTY (NAD83,TRUE NORTH)	Wellbore	AG 32C-31-L AWB
Facility	SEC.32-T06N-R66W		

WELLPATH DATA (202 stations)

MD (ft)	Inclination [°]	Azimuth [°]	TVD (ft)	Vert Sect (ft)	North (ft)	East (ft)	DLS [°/100ft]	Comments
10651.00	89.910	267.980	7036.50	2707.81	-1360.06	-2524.00	2.42	
10744.00	89.940	267.260	7036.63	2800.17	-1363.93	-2616.92	0.77	
10837.00	89.690	267.150	7036.93	2892.60	-1368.46	-2709.81	0.29	
10930.00	91.510	267.440	7035.95	2985.01	-1372.85	-2802.70	1.98	
11022.00	90.460	267.750	7034.37	3076.36	-1376.71	-2894.60	1.19	
11116.00	88.680	268.090	7035.08	3169.64	-1380.12	-2988.53	1.93	
11210.00	87.750	268.310	7038.01	3262.83	-1383.07	-3082.44	1.02	
11303.00	87.940	268.100	7041.50	3355.00	-1385.98	-3175.33	0.30	
11396.00	88.060	268.790	7044.75	3447.13	-1388.51	-3268.24	0.75	
11490.00	90.430	268.490	7045.99	3540.26	-1390.74	-3362.20	2.54	
11584.00	89.820	268.870	7045.78	3633.38	-1392.90	-3456.17	0.76	
11678.00	89.970	269.070	7045.95	3726.45	-1394.59	-3550.15	0.27	
11771.00	90.000	267.630	7045.98	3818.65	-1397.27	-3643.11	1.55	
11864.00	89.850	266.880	7046.10	3911.08	-1401.72	-3736.01	0.82	
11957.00	89.910	266.850	7046.29	4003.57	-1406.81	-3828.87	0.07	
12051.00	89.820	266.000	7046.52	4097.12	-1412.67	-3922.68	0.91	
12146.00	90.090	269.910	7046.59	4191.38	-1416.06	-4017.60	4.13	
12241.00	91.140	267.930	7045.57	4285.43	-1417.85	-4112.57	2.36	
12335.00	90.830	265.600	7043.95	4378.92	-1423.15	-4206.40	2.50	
12430.00	90.950	264.700	7042.48	4473.64	-1431.18	-4301.05	0.96	
12522.00	91.110	265.060	7040.83	4565.40	-1439.39	-4392.67	0.43	
12617.00	90.950	264.670	7039.12	4660.15	-1447.89	-4487.27	0.44	
12711.00	91.050	265.870	7037.48	4753.86	-1455.64	-4580.94	1.28	
12806.00	90.990	266.770	7035.79	4848.41	-1461.74	-4675.72	0.95	
12899.00	90.990	267.970	7034.18	4940.80	-1466.01	-4768.61	1.29	
12994.00	90.830	268.480	7032.67	5035.01	-1468.95	-4863.55	0.56	
13087.00	91.110	267.480	7031.10	5127.28	-1472.23	-4956.48	1.12	
13180.00	90.920	269.010	7029.45	5219.49	-1475.08	-5049.42	1.66	
13273.00	91.020	268.020	7027.87	5311.65	-1477.48	-5142.37	1.07	
13366.00	90.990	266.670	7026.24	5404.04	-1481.79	-5235.26	1.45	



SRC ENERGY

Actual Wellpath Report

AG 32C-31-L AWP

Page 7 of 10

BAKER
HUGHES

REFERENCE WELLPATH IDENTIFICATION

Operator	SRC ENERGY	Slot	SLOT#11 AG 32C-31-L (1022'FNL & 585'FEL SEC 32)
Area	COLORADO	Well	AG 32C-31-L
Field	WELD COUNTY (NAD83,TRUE NORTH)	Wellbore	AG 32C-31-L AWB
Facility	SEC.32-T06N-R66W		

WELLPATH DATA (202 stations)

MD (ft)	Inclination [°]	Azimuth [°]	TVD (ft)	Vert Sect (ft)	North (ft)	East (ft)	DLS [°/100ft]	Comments
13458.00	90.800	267.980	7024.81	5495.45	-1486.09	-5327.14	1.44	
13551.00	90.920	267.410	7023.41	5587.78	-1489.82	-5420.06	0.63	
13646.00	90.920	267.000	7021.88	5682.18	-1494.46	-5514.93	0.43	
13739.00	90.220	267.490	7020.96	5774.60	-1498.93	-5607.82	0.92	
13833.00	90.310	267.870	7020.52	5867.94	-1502.73	-5701.74	0.42	
13926.00	90.250	268.200	7020.07	5960.21	-1505.92	-5794.69	0.36	
14018.00	89.320	268.260	7020.41	6051.45	-1508.76	-5886.64	1.01	
14111.00	89.350	268.650	7021.49	6143.63	-1511.27	-5979.60	0.42	
14204.00	89.320	268.810	7022.57	6235.75	-1513.33	-6072.57	0.18	
14297.00	90.280	269.150	7022.90	6327.82	-1514.99	-6165.55	1.10	
14390.00	90.120	269.050	7022.57	6419.86	-1516.45	-6258.54	0.20	
14514.00	90.090	267.750	7022.35	6542.79	-1519.91	-6382.49	1.05	
14577.00	90.060	268.890	7022.26	6605.26	-1521.76	-6445.46	1.81	
14672.00	90.280	269.230	7021.98	6699.29	-1523.31	-6540.45	0.43	
14766.00	90.250	269.550	7021.55	6792.25	-1524.32	-6634.44	0.34	
14861.00	89.780	268.710	7021.52	6886.27	-1525.76	-6729.43	1.01	
14954.00	89.720	268.170	7021.93	6978.45	-1528.29	-6822.40	0.58	
15047.00	89.600	268.020	7022.48	7070.71	-1531.38	-6915.34	0.21	
15141.00	89.780	267.910	7022.99	7163.99	-1534.72	-7009.28	0.22	
15236.00	89.750	268.630	7023.38	7258.20	-1537.59	-7104.24	0.76	
15330.00	89.720	270.300	7023.81	7351.14	-1538.46	-7198.23	1.78	
15424.00	88.830	269.090	7025.00	7444.02	-1538.96	-7292.22	1.60	
15518.00	88.740	268.860	7027.00	7537.06	-1540.65	-7386.18	0.26	
15611.00	89.970	268.970	7028.04	7629.14	-1542.41	-7479.16	1.33	
15706.00	89.750	267.750	7028.27	7723.32	-1545.13	-7574.12	1.30	
15800.00	89.940	265.630	7028.53	7816.83	-1550.55	-7667.95	2.26	
15895.00	88.580	265.040	7029.76	7911.53	-1558.28	-7762.63	1.56	
15987.00	88.400	264.610	7032.18	8003.28	-1566.57	-7854.22	0.51	
16079.00	89.910	267.740	7033.54	8094.87	-1572.71	-7945.99	3.78	
16172.00	89.910	269.800	7033.68	8186.98	-1574.70	-8038.96	2.22	



SRC ENERGY

Actual Wellpath Report

AG 32C-31-L AWP

Page 8 of 10



**BAKER
HUGHES**

REFERENCE WELLPATH IDENTIFICATION

Operator	SRC ENERGY	Slot	SLOT#11 AG 32C-31-L (1022'FNL & 585'FEL SEC 32)
Area	COLORADO	Well	AG 32C-31-L
Field	WELD COUNTY (NAD83,TRUE NORTH)	Wellbore	AG 32C-31-L AWB
Facility	SEC.32-T06N-R66W		

WELLPATH DATA (202 stations)

MD [ft]	Inclination [°]	Azimuth [°]	TVD [ft]	Vert Sect [ft]	North [ft]	East [ft]	DLS [°/100ft]	Comments
16264.00	90.000	268.260	7033.76	8278.04	-1576.26	-8130.95	1.68	
16357.00	88.890	265.740	7034.66	8370.50	-1581.13	-8223.81	2.96	
16452.00	88.920	265.310	7036.47	8465.17	-1588.54	-8318.50	0.45	
16544.00	88.830	264.260	7038.28	8556.94	-1596.90	-8410.10	1.15	
16638.00	88.890	264.970	7040.15	8650.72	-1605.72	-8503.67	0.76	
16732.00	88.920	265.170	7041.95	8744.45	-1613.80	-8597.30	0.22	
16825.00	88.920	265.390	7043.70	8837.15	-1621.45	-8689.97	0.24	
16918.00	90.680	266.080	7044.02	8929.81	-1628.36	-8782.71	2.03	
17011.00	90.950	267.090	7042.70	9022.34	-1633.90	-8875.53	1.12	
17105.00	89.880	269.320	7042.02	9115.56	-1636.85	-8969.48	2.63	
17199.00	89.780	271.160	7042.30	9208.31	-1636.45	-9063.47	1.96	
17293.00	89.850	271.160	7042.60	9300.79	-1634.55	-9157.45	0.07	
17387.00	89.970	269.550	7042.75	9393.51	-1633.97	-9251.45	1.72	
17481.00	90.090	268.330	7042.70	9486.57	-1635.71	-9345.43	1.30	
17574.00	89.910	267.180	7042.70	9578.90	-1639.35	-9438.36	1.25	
17669.00	89.940	266.770	7042.82	9673.36	-1644.36	-9533.22	0.43	
17762.00	90.060	266.900	7042.82	9765.86	-1649.50	-9626.08	0.19	
17855.00	90.090	267.280	7042.70	9858.31	-1654.22	-9718.96	0.41	
17949.00	90.090	268.890	7042.55	9951.56	-1657.36	-9812.90	1.71	
18043.00	89.880	269.640	7042.58	10044.56	-1658.57	-9906.90	0.83	
18138.00	89.720	269.130	7042.91	10138.51	-1659.59	-10001.89	0.56	LAST BHI MWD SURVEY (2240'FNL & 579'FWL, SEC.31)
18368.00	89.720	269.130	7044.03	10366.12	-1663.08	-10231.86	0.00	PROJECTION TO BIT (2244'FNL & 349'FWL, SEC.31)



Actual Wellpath Report

AG 32C-31-L AWP

Page 9 of 10



REFERENCE WELLPATH IDENTIFICATION

Operator	SRC ENERGY	Slot	SLOT#11 AG 32C-31-L (1022'FNL & 585'FEL SEC 32)
Area	COLORADO	Well	AG 32C-31-L
Field	WELD COUNTY (NAD83,TRUE NORTH)	Wellbore	AG 32C-31-L AWB
Facility	SEC.32-T06N-R66W		

HOLE & CASING SECTIONS - Ref Wellbore: AG 32C-31-L AWB Ref Wellpath: AG 32C-31-L AWP

String/Diameter	Start MD [ft]	End MD [ft]	Interval [ft]	Start TVD [ft]	End TVD [ft]	Start N/S [ft]	Start E/W [ft]	End N/S [ft]	End E/W [ft]
13.5in Open Hole	20.00	1796.00	1776.00	20.00	1758.89	0.00	0.00	-218.35	221.07
9.625in Casing Surface	20.00	1796.00	1776.00	20.00	1758.89	0.00	0.00	-218.35	221.07
8.5in Open Hole	1796.00	18368.00	16572.00	1758.89	7044.03	-218.35	221.07	-1663.08	-10231.86

TARGETS

Name	TVD [ft]	North [ft]	East [ft]	Grid East [US ft]	Grid North [US ft]	Latitude	Longitude	Shape
SEC.31-T06N-R66W	-18.00	-2417.25	-11119.95	3185242.22	1404728.43	40°26'32.903"N	104°50'04.052"W	polygon
SEC.32-T06N-R66W	-18.00	-2417.25	-11119.95	3185242.22	1404728.43	40°26'32.903"N	104°50'04.052"W	polygon
AG 32C-31-L BHL REV-2 (2269'FNL & 75'FWL, SEC.31)	7044.40	-1688.19	-10505.89	3185850.44	1405462.33	40°26'40.110"N	104°49'56.114"W	circle
AG 32C-31-L TOP OF PROD REV-2 (2288'FNL & 75'FEL, SEC.32)	7070.07	-1252.83	510.97	3196863.06	1405985.30	40°26'44.434"N	104°47'33.623"W	circle
AG 32C-31-L BHL REV-1 ON PLAT (CDLL, 2269'FNL & 75'FWL SEC 31)	7079.00	-1688.19	-10505.89	3185850.44	1405462.33	40°26'40.110"N	104°49'56.114"W	circle
AG 32C-31-L TOP OF PROD (2288'FNL & 75'FEL SEC 32)	7079.00	-1252.83	510.97	3196863.06	1405985.30	40°26'44.434"N	104°47'33.623"W	circle

WELLPATH COMPOSITION - Ref Wellbore: AG 32C-31-L AWB Ref Wellpath: AG 32C-31-L AWP

Start MD [ft]	End MD [ft]	Positional Uncertainty Model	Log Name/Comment	Wellbore
20.00	1746.00	Custom BHI NaviTrak (Standard Rotating+Axial Corr) (Rockies 0.03Gt model)	BHI NAVITRAK W/APS EM 13.5" (STD ROTATING, AXIAL, ROCKIES GT)<106-1746>	AG 32C-31-L AWB
1746.00	18138.00	Custom BHI AutoTrak Curve (IFR1, Short) (Rockies 0.03Gt model)	ATC SURVEYS <1806'-18138'>	AG 32C-31-L AWB
18138.00	18368.00	Blind Drilling (std)	Projection to bit	AG 32C-31-L AWB



Actual Wellpath Report

AG 32C-31-L AWP

Page 10 of 10



REFERENCE WELLPATH IDENTIFICATION

Operator	SRC ENERGY	Slot	SLOT#11 AG 32C-31-L (1022'FNL & 585'FEL SEC 32)
Area	COLORADO	Well	AG 32C-31-L
Field	WELD COUNTY (NAD83,TRUE NORTH)	Wellbore	AG 32C-31-L AWB
Facility	SEC.32-T06N-R66W		

WELLPATH COMMENTS

MD [ft]	Inclination [°]	Azimuth [°]	TVD [ft]	Comment
7569.00	78.780	267.550	7053.33	LANDING POINT (2261'FNL & 34'FEL, SEC.32)
18138.00	89.720	269.130	7042.91	LAST BHI MWD SURVEY (2240'FNL & 579'FWL, SEC.31)
18368.00	89.720	269.130	7044.03	PROJECTION TO BIT (2244'FNL & 349'FWL, SEC.31)