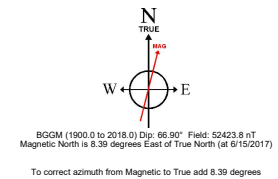
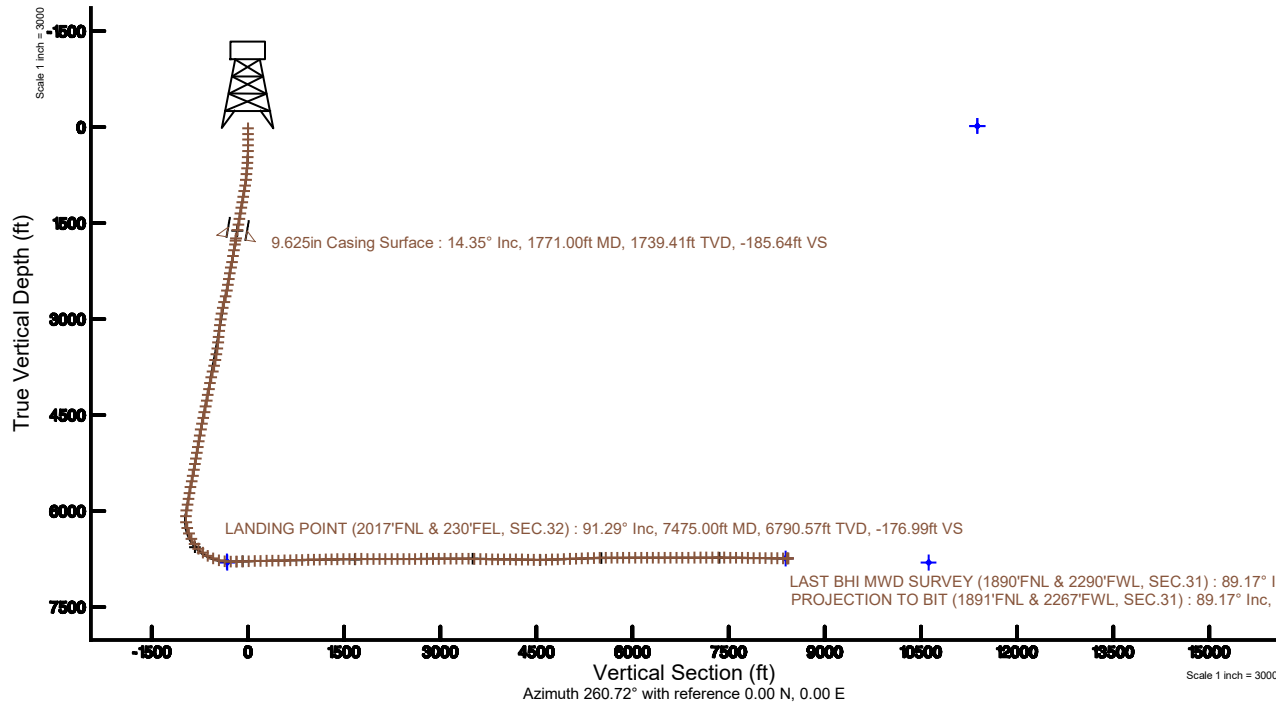
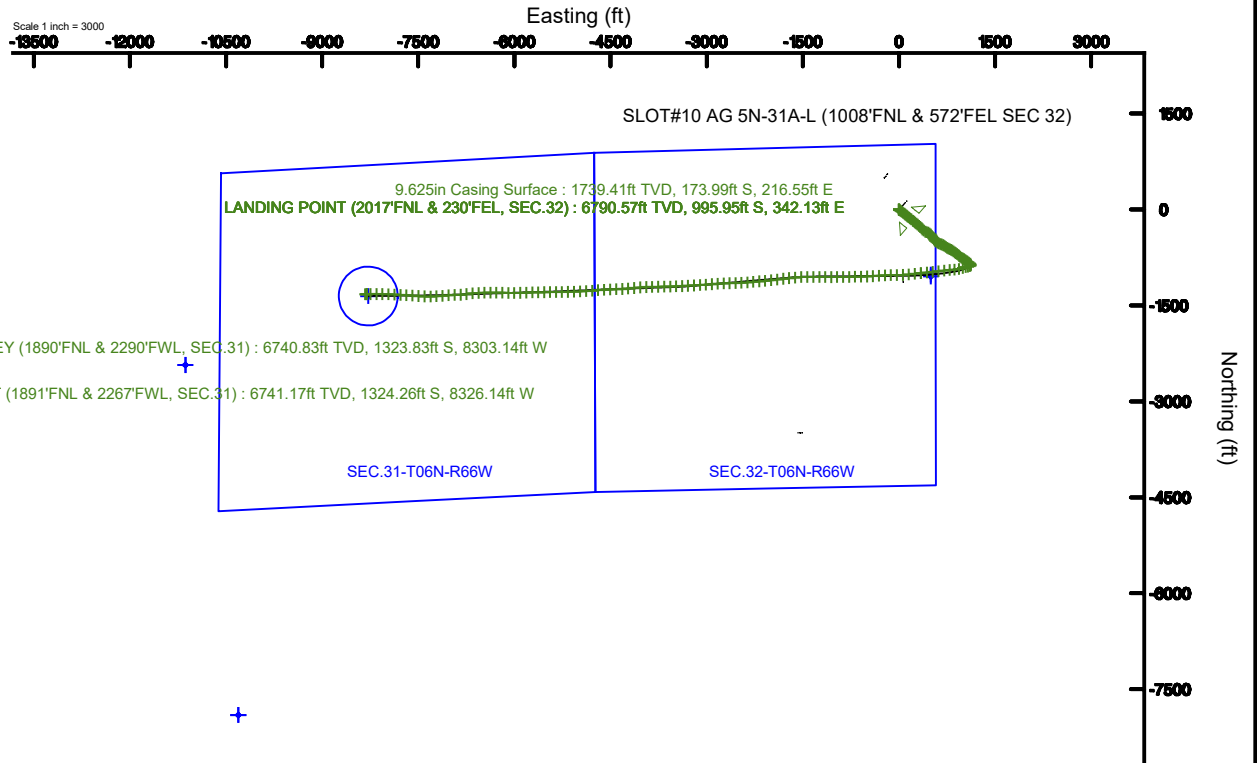


SRC ENERGY

Location: COLORADO Slot: SLOT#10 AG 5N-31A-L (1008'FNL & 572'FEL SEC 32)
 Field: WELD COUNTY (NAD83,TRUE NORTH) Well: AG 5N-31A-L
 Facility: SEC.32-T06N-R66W Wellbore: AG 5N-31A-L PWB

Plot reference wellpath is AG 5N-31A-L REV-D.0) PWP	Grid System: NAD83 / Lambert Colorado SP, Northern Zone (501), US feet
True vertical depths are referenced to PRECISION 462 (20') (RKB)	* = Wellpath was transformed from a different geodetic datum
Measured depths are referenced to PRECISION 462 (20') (RKB)	North Reference: True north
PRECISION 462 (20') (RKB) to Mean Sea Level: 4726 feet	Scale: True distance
Mean Sea Level to Mud line (At Slot: SLOT#10 AG 5N-31A-L (1008'FNL & 572'FEL SEC 32)): 0 feet	Depths are in feet
Coordinates are in feet referenced to Slot	Created by: doddanna on 2017-12-20
	Database: WellArchitectDB





Actual Wellpath Report

AG 5N-31A-L AWP

Page 1 of 9



REFERENCE WELLPATH IDENTIFICATION

Operator	SRC ENERGY	Slot	SLOT#10 AG 5N-31A-L (1008'FNL & 572'FEL SEC 32)
Area	COLORADO	Well	AG 5N-31A-L
Field	WELD COUNTY (NAD83,TRUE NORTH)	Wellbore	AG 5N-31A-L AWP
Facility	SEC.32-T06N-R66W		

REPORT SETUP INFORMATION

Projection System	NAD83 / Lambert Colorado SP, Northern Zone (501), US feet	Software System	WellArchitect® 5.0
North Reference	True	User	Doddanna
Scale	0.999963	Report Generated	12/20/2017 at 1:12:47 PM
Convergence at slot	0.46° East	Database/Source file	WellArchitectDB/AG_5N-31A-L_AWP.xml

WELLPATH LOCATION

	Local coordinates		Grid coordinates		Geographic coordinates	
	North[ft]	East[ft]	Easting[US ft]	Northing[US ft]	Latitude	Longitude
Slot Location	-131.86	-122.46	3196355.65	1407248.66	40°26'56.958"N	104°47'40.056"W
Facility Reference Pt			3196477.05	1407381.48	40°26'58.261"N	104°47'38.472"W
Field Reference Pt			3171284.48	1426358.81	40°30'07.643"N	104°53'02.634"W

WELLPATH DATUM

Calculation method	Minimum curvature	PRECISION 462 (20') (RKB) to Facility Vertical Datum	4726.00ft
Horizontal Reference Pt	Slot	PRECISION 462 (20') (RKB) to Mean Sea Level	4726.00ft
Vertical Reference Pt	PRECISION 462 (20') (RKB)	PRECISION 462 (20') (RKB) to Mud Line at Slot (SLOT#10 AG 5N-31A-L (1008'FNL & 572'FEL SEC 32))	4726.00ft
MD Reference Pt	PRECISION 462 (20') (RKB)	Section Origin	N 0.00, E 0.00 ft
Field Vertical Reference	Mean Sea Level	Section Azimuth	260.72°



SRC ENERGY

Actual Wellpath Report

AG 5N-31A-L AWP

Page 2 of 9

BAKER
HUGHES

REFERENCE WELLPATH IDENTIFICATION

Operator	SRC ENERGY	Slot	SLOT#10 AG 5N-31A-L (1008'FNL & 572'FEL SEC 32)
Area	COLORADO	Well	AG 5N-31A-L
Field	WELD COUNTY (NAD83,TRUE NORTH)	Wellbore	AG 5N-31A-L AWB
Facility	SEC.32-T06N-R66W		

WELLPATH DATA (176 stations) † = interpolated/extrapolated station

MD [ft]	Inclination [°]	Azimuth [°]	TVD [ft]	Vert Sect [ft]	North [ft]	East [ft]	DLS [°/100ft]	Comments
0.00†	0.000	218.760	0.00	0.00	0.00	0.00	0.00	
20.00	0.000	218.760	20.00	0.00	0.00	0.00	0.00	
106.00	0.340	218.760	106.00	0.19	-0.20	-0.16	0.40	
193.00	0.470	207.470	193.00	0.60	-0.72	-0.49	0.17	
283.00	0.100	167.960	283.00	0.81	-1.12	-0.64	0.44	
375.00	1.040	138.930	374.99	0.37	-1.83	-0.07	1.04	
467.00	3.200	127.760	466.92	-1.82	-4.03	2.50	2.38	
557.00	5.250	125.020	556.67	-6.48	-7.93	7.86	2.29	
647.00	7.200	128.450	646.14	-13.22	-13.80	15.65	2.20	
737.00	8.640	128.240	735.28	-21.58	-21.50	25.38	1.60	
827.00	9.630	127.080	824.14	-31.34	-30.22	36.70	1.12	
917.00	12.440	127.500	912.46	-43.18	-40.66	50.39	3.12	
1007.00	14.650	129.340	999.95	-57.34	-53.78	66.89	2.50	
1097.00	14.960	128.720	1086.97	-72.63	-68.26	84.75	0.39	
1187.00	14.950	129.210	1173.92	-88.10	-82.86	102.81	0.14	
1277.00	15.210	129.750	1260.82	-103.53	-97.75	120.89	0.33	
1367.00	14.610	131.540	1347.79	-118.44	-112.83	138.46	0.84	
1457.00	13.980	127.890	1435.00	-133.00	-127.03	155.53	1.22	
1547.00	14.190	126.170	1522.30	-148.13	-140.22	173.02	0.52	
1637.00	14.200	127.140	1609.55	-163.48	-153.40	190.72	0.26	
1809.00	14.400	130.790	1776.22	-191.75	-180.11	223.73	0.54	
1870.00	14.590	132.410	1835.28	-201.38	-190.24	235.15	0.73	
1964.00	14.470	126.940	1926.28	-216.85	-205.29	253.28	1.46	
2056.00	14.740	128.820	2015.31	-232.61	-219.53	271.58	0.59	
2152.00	16.750	133.210	2107.70	-249.19	-236.66	291.18	2.43	
2244.00	16.760	131.530	2195.80	-265.65	-254.53	310.78	0.53	
2337.00	16.890	134.560	2284.82	-282.09	-272.90	330.44	0.95	
2431.00	16.900	136.470	2374.76	-297.84	-292.39	349.58	0.59	
2524.00	16.820	138.130	2463.77	-312.69	-312.21	367.87	0.52	
2618.00	16.700	133.040	2553.78	-328.27	-331.56	386.82	1.57	



SRC ENERGY

Actual Wellpath Report

AG 5N-31A-L AWP

Page 3 of 9

**BAKER
HUGHES****REFERENCE WELLPATH IDENTIFICATION**

Operator	SRC ENERGY	Slot	SLOT#10 AG 5N-31A-L (1008'FNL & 572'FEL SEC 32)
Area	COLORADO	Well	AG 5N-31A-L
Field	WELD COUNTY (NAD83, TRUE NORTH)	Wellbore	AG 5N-31A-L AWB
Facility	SEC.32-T06N-R66W		

WELLPATH DATA (176 stations)

MD [ft]	Inclination [°]	Azimuth [°]	TVD [ft]	Vert Sect [ft]	North [ft]	East [ft]	DLS [°/100ft]	Comments
2712.00	17.730	116.760	2643.62	-348.11	-347.23	409.49	5.22	
2806.00	14.510	100.910	2733.95	-370.75	-355.91	433.85	5.77	
2900.00	14.800	112.890	2824.92	-391.97	-362.81	456.48	3.23	
2993.00	14.890	126.870	2914.84	-410.31	-374.60	476.99	3.84	
3085.00	14.810	135.810	3003.78	-425.23	-390.13	494.64	2.49	
3179.00	14.990	145.660	3094.64	-437.25	-408.78	509.87	2.70	
3273.00	14.750	149.050	3185.49	-446.82	-429.08	522.89	0.96	
3368.00	14.870	147.850	3277.33	-456.02	-449.77	535.59	0.35	
3461.00	15.020	146.860	3367.19	-465.53	-469.97	548.53	0.32	
3555.00	14.720	136.420	3458.06	-477.19	-488.82	563.43	2.86	
3649.00	15.200	130.700	3548.87	-491.84	-505.51	581.00	1.65	
3743.00	14.960	117.970	3639.66	-509.43	-519.24	601.07	3.53	
3835.00	15.120	113.030	3728.52	-529.02	-529.50	622.60	1.40	
3929.00	15.200	111.460	3819.24	-549.98	-538.81	645.35	0.44	
4024.00	14.920	112.350	3910.98	-571.09	-548.02	668.25	0.38	
4118.00	14.920	119.030	4001.82	-590.89	-558.49	690.02	1.83	
4212.00	14.860	124.920	4092.67	-609.03	-571.26	710.49	1.61	
4306.00	14.650	125.410	4183.57	-626.12	-585.05	730.06	0.26	
4399.00	14.630	126.550	4273.55	-642.66	-598.86	749.08	0.31	
4492.00	14.580	118.280	4363.55	-660.13	-611.40	768.83	2.24	
4585.00	14.550	114.390	4453.57	-679.13	-621.77	789.77	1.05	
4679.00	14.120	115.320	4544.64	-698.39	-631.55	810.89	0.52	
4774.00	14.210	117.540	4636.75	-717.26	-641.90	831.71	0.58	
4868.00	14.500	127.600	4727.83	-734.55	-654.41	851.26	2.67	
4962.00	14.510	127.540	4818.84	-750.65	-668.77	869.92	0.02	
5054.00	14.240	126.450	4907.96	-766.43	-682.51	888.16	0.42	
5147.00	14.500	130.580	4998.05	-781.92	-696.88	906.21	1.14	
5240.00	14.230	132.040	5088.14	-796.57	-712.11	923.54	0.49	
5333.00	14.230	131.760	5178.29	-810.90	-727.38	940.56	0.07	
5425.00	14.420	126.470	5267.43	-826.00	-741.72	958.20	1.44	



SRC ENERGY

Actual Wellpath Report

AG 5N-31A-L AWP

Page 4 of 9

**BAKER
HUGHES**

REFERENCE WELLPATH IDENTIFICATION

Operator	SRC ENERGY	Slot	SLOT#10 AG 5N-31A-L (1008'FNL & 572'FEL SEC 32)
Area	COLORADO	Well	AG 5N-31A-L
Field	WELD COUNTY (NAD83, TRUE NORTH)	Wellbore	AG 5N-31A-L AWB
Facility	SEC.32-T06N-R66W		

WELLPATH DATA (176 stations)

MD [ft]	Inclination [°]	Azimuth [°]	TVD [ft]	Vert Sect [ft]	North [ft]	East [ft]	DLS [°/100ft]	Comments
5518.00	14.280	123.860	5357.53	-842.45	-754.99	977.04	0.71	
5612.00	14.500	118.950	5448.58	-860.15	-767.15	996.97	1.32	
5704.00	14.160	118.060	5537.72	-878.15	-778.02	1016.97	0.44	
5797.00	14.420	125.090	5627.85	-895.47	-790.03	1036.49	1.89	
5891.00	14.210	129.720	5718.94	-911.40	-804.13	1054.94	1.24	
5984.00	14.270	127.880	5809.08	-926.68	-818.46	1072.77	0.49	
6078.00	14.380	124.360	5900.16	-943.01	-832.16	1091.55	0.93	
6172.00	14.150	130.300	5991.26	-958.91	-846.18	1109.95	1.58	
6265.00	9.590	158.470	6082.32	-967.93	-860.76	1121.48	7.79	
6358.00	9.370	208.710	6174.20	-964.91	-874.63	1120.68	8.62	
6450.00	15.570	245.680	6264.12	-948.33	-886.31	1105.79	10.67	
6543.00	20.810	262.300	6352.50	-919.73	-893.67	1078.01	7.88	
6637.00	27.740	252.850	6438.17	-881.30	-902.38	1040.50	8.43	
6730.00	34.890	252.800	6517.57	-833.46	-916.64	994.35	7.69	
6823.00	44.470	259.020	6589.09	-774.39	-930.75	936.81	11.14	
6916.00	53.510	264.120	6650.08	-704.34	-940.81	867.47	10.56	
7009.00	61.050	266.170	6700.31	-626.40	-947.37	789.57	8.32	
7102.00	68.070	263.460	6740.25	-542.69	-955.01	706.00	7.99	
7196.00	74.710	262.970	6770.23	-453.74	-965.54	617.59	7.08	
7289.00	84.050	263.570	6787.35	-362.52	-976.23	526.91	10.06	
7382.00	90.340	264.620	6791.90	-269.85	-985.78	434.56	6.86	
7475.00	91.290	262.820	6790.57	-176.99	-995.95	342.13	2.19	LANDING POINT (2017'FNL & 230'FEL, SEC.32)
7570.00	91.290	263.500	6788.43	-82.10	-1007.26	247.83	0.72	
7664.00	92.310	264.760	6785.48	11.69	-1016.87	154.38	1.72	
7757.00	91.320	267.160	6782.54	104.24	-1023.42	61.66	2.79	
7852.00	91.110	269.210	6780.52	198.41	-1026.42	-33.26	2.17	
7944.00	91.020	269.460	6778.81	289.35	-1027.49	-125.24	0.29	
8038.00	90.990	268.020	6777.16	382.42	-1029.56	-219.20	1.53	
8131.00	91.020	265.180	6775.53	474.90	-1035.07	-312.02	3.05	
8226.00	90.830	265.720	6774.00	569.57	-1042.61	-406.70	0.60	



SRC ENERGY

Actual Wellpath Report

AG 5N-31A-L AWP

Page 5 of 9

**BAKER
HUGHES****REFERENCE WELLPATH IDENTIFICATION**

Operator	SRC ENERGY	Slot	SLOT#10 AG 5N-31A-L (1008'FNL & 572'FEL SEC 32)
Area	COLORADO	Well	AG 5N-31A-L
Field	WELD COUNTY (NAD83,TRUE NORTH)	Wellbore	AG 5N-31A-L AWB
Facility	SEC.32-T06N-R66W		

WELLPATH DATA (176 stations)

MD (ft)	Inclination [°]	Azimuth [°]	TVD (ft)	Vert Sect (ft)	North (ft)	East (ft)	DLS [°/100ft]	Comments
8319.00	91.910	267.910	6771.77	662.01	-1047.77	-499.53	2.62	
8412.00	91.910	269.350	6768.67	754.07	-1050.00	-592.45	1.55	
8506.00	91.970	268.460	6765.49	847.06	-1051.79	-686.37	0.95	
8598.00	90.920	268.570	6763.17	938.17	-1054.17	-778.31	1.15	
8691.00	91.110	269.060	6761.52	1030.23	-1056.10	-871.28	0.57	
8784.00	91.170	269.370	6759.67	1122.19	-1057.37	-964.25	0.34	
8878.00	91.110	270.010	6757.80	1215.02	-1057.88	-1058.23	0.68	
8971.00	91.200	270.780	6755.93	1306.68	-1057.24	-1151.21	0.83	
9063.00	91.170	270.700	6754.03	1397.26	-1056.05	-1243.18	0.09	
9157.00	90.980	271.290	6752.26	1489.73	-1054.42	-1337.15	0.66	
9251.00	91.140	269.310	6750.52	1582.40	-1053.93	-1431.13	2.11	
9346.00	90.430	266.600	6749.22	1676.62	-1057.32	-1526.05	2.95	
9441.00	89.450	264.820	6749.32	1771.26	-1064.42	-1620.78	2.14	
9536.00	89.510	264.160	6750.18	1866.05	-1073.54	-1715.33	0.70	
9629.00	89.540	263.270	6750.95	1958.92	-1083.72	-1807.77	0.96	
9722.00	89.320	261.850	6751.88	2051.86	-1095.77	-1899.98	1.55	
9816.00	90.370	264.030	6752.13	2145.78	-1107.32	-1993.26	2.57	
9912.00	90.180	265.440	6751.67	2241.54	-1116.13	-2088.85	1.48	
10005.00	90.250	265.050	6751.32	2334.25	-1123.84	-2181.53	0.43	
10097.00	90.490	264.570	6750.73	2426.02	-1132.16	-2273.15	0.58	
10190.00	90.250	265.210	6750.13	2518.77	-1140.44	-2365.78	0.73	
10282.00	90.340	267.170	6749.66	2610.34	-1146.55	-2457.57	2.13	
10375.00	90.220	268.170	6749.20	2702.66	-1150.34	-2550.49	1.08	
10467.00	90.220	268.260	6748.85	2793.87	-1153.20	-2642.45	0.10	
10559.00	90.090	267.160	6748.60	2885.18	-1156.88	-2734.37	1.20	
10652.00	90.370	266.370	6748.23	2977.66	-1162.12	-2827.22	0.90	
10744.00	90.370	265.530	6747.63	3069.28	-1168.62	-2918.99	0.91	
10838.00	90.620	265.980	6746.82	3162.91	-1175.58	-3012.73	0.55	
10930.00	90.250	265.890	6746.12	3254.53	-1182.10	-3104.49	0.41	
11022.00	89.260	266.720	6746.51	3346.09	-1188.03	-3196.30	1.40	



SRC ENERGY

Actual Wellpath Report

AG 5N-31A-L AWP

Page 6 of 9

**BAKER
HUGHES**

REFERENCE WELLPATH IDENTIFICATION

Operator	SRC ENERGY	Slot	SLOT#10 AG 5N-31A-L (1008'FNL & 572'FEL SEC 32)
Area	COLORADO	Well	AG 5N-31A-L
Field	WELD COUNTY (NAD83,TRUE NORTH)	Wellbore	AG 5N-31A-L AWB
Facility	SEC.32-T06N-R66W		

WELLPATH DATA (176 stations)

MD (ft)	Inclination [°]	Azimuth [°]	TVD (ft)	Vert Sect (ft)	North (ft)	East (ft)	DLS [°/100ft]	Comments
11117.00	89.480	267.220	6747.56	3440.51	-1193.05	-3291.16	0.57	
11210.00	88.520	267.190	6749.18	3532.90	-1197.59	-3384.03	1.03	
11303.00	88.950	268.000	6751.24	3625.21	-1201.49	-3476.93	0.99	
11396.00	88.770	268.320	6753.09	3717.41	-1204.47	-3569.86	0.39	
11490.00	88.620	268.690	6755.23	3810.52	-1206.92	-3663.81	0.42	
11584.00	89.690	269.090	6756.61	3903.55	-1208.75	-3757.78	1.22	
11678.00	89.480	269.510	6757.29	3996.49	-1209.89	-3851.77	0.50	
11771.00	89.880	267.160	6757.81	4088.67	-1212.60	-3944.72	2.56	
11865.00	89.780	265.160	6758.09	4182.24	-1218.89	-4038.50	2.13	
11958.00	88.620	264.040	6759.39	4275.01	-1227.64	-4131.08	1.73	
12052.00	88.830	264.740	6761.48	4368.79	-1236.83	-4224.60	0.78	
12146.00	88.860	267.350	6763.38	4462.36	-1243.31	-4318.35	2.78	
12241.00	90.580	268.400	6763.84	4556.61	-1246.83	-4413.28	2.12	
12336.00	92.060	267.620	6761.65	4650.82	-1250.13	-4508.20	1.76	
12430.00	91.820	267.130	6758.47	4744.13	-1254.43	-4602.04	0.58	
12523.00	92.060	263.230	6755.32	4836.78	-1262.24	-4694.64	4.20	
12617.00	92.030	266.370	6751.97	4930.47	-1270.75	-4788.18	3.34	
12712.00	92.000	267.750	6748.63	5024.82	-1275.62	-4883.00	1.45	
12806.00	91.910	267.350	6745.42	5118.10	-1279.64	-4976.86	0.44	
12899.00	92.060	266.930	6742.20	5210.46	-1284.28	-5069.69	0.48	
12994.00	92.030	268.500	6738.81	5304.69	-1288.06	-5164.55	1.65	
13088.00	92.060	269.020	6735.45	5397.71	-1290.09	-5258.46	0.55	
13180.00	92.060	269.650	6732.15	5488.61	-1291.16	-5350.40	0.68	
13274.00	90.030	269.070	6730.43	5581.52	-1292.21	-5444.37	2.25	
13366.00	89.940	269.320	6730.46	5672.52	-1293.50	-5536.36	0.29	
13459.00	90.090	269.240	6730.43	5764.48	-1294.67	-5629.36	0.18	
13551.00	90.060	268.270	6730.31	5855.57	-1296.67	-5721.33	1.05	
13646.00	89.910	267.490	6730.34	5949.83	-1300.19	-5816.27	0.84	
13740.00	89.940	268.030	6730.46	6043.12	-1303.86	-5910.19	0.58	
13834.00	90.280	267.740	6730.28	6136.39	-1307.33	-6004.13	0.48	



SRC ENERGY

Actual Wellpath Report

AG 5N-31A-L AWP

Page 7 of 9

**BAKER
HUGHES****REFERENCE WELLPATH IDENTIFICATION**

Operator	SRC ENERGY	Slot	SLOT#10 AG 5N-31A-L (1008'FNL & 572'FEL SEC 32)
Area	COLORADO	Well	AG 5N-31A-L
Field	WELD COUNTY (NAD83, TRUE NORTH)	Wellbore	AG 5N-31A-L AWB
Facility	SEC.32-T06N-R66W		

WELLPATH DATA (176 stations)

MD [ft]	Inclination [°]	Azimuth [°]	TVD [ft]	Vert Sect [ft]	North [ft]	East [ft]	DLS [°/100ft]	Comments
13926.00	90.060	274.110	6730.01	6226.88	-1305.84	-6096.07	6.93	
14018.00	89.970	272.480	6729.98	6316.67	-1300.56	-6187.91	1.77	
14112.00	90.120	268.990	6729.91	6409.22	-1299.35	-6281.89	3.72	
14204.00	90.340	269.180	6729.54	6500.24	-1300.82	-6373.88	0.32	
14298.00	89.660	268.680	6729.54	6593.28	-1302.58	-6467.86	0.90	
14391.00	90.250	269.200	6729.61	6685.32	-1304.30	-6560.85	0.85	
14485.00	89.910	262.730	6729.48	6778.88	-1310.91	-6654.56	6.89	
14578.00	90.060	261.190	6729.50	6871.85	-1323.91	-6746.65	1.66	
14672.00	90.090	267.220	6729.38	6965.63	-1333.40	-6840.12	6.41	
14767.00	90.060	268.210	6729.26	7059.93	-1337.19	-6935.05	1.04	
14861.00	90.280	266.250	6728.98	7153.31	-1341.73	-7028.93	2.10	
14954.00	90.000	264.470	6728.75	7246.00	-1349.25	-7121.62	1.94	
15048.00	90.180	266.430	6728.60	7339.68	-1356.71	-7215.32	2.09	
15142.00	89.350	269.570	6728.99	7432.91	-1359.99	-7309.25	3.46	
15237.00	89.170	272.370	6730.22	7526.37	-1358.38	-7404.22	2.95	
15330.00	89.290	273.730	6731.47	7617.22	-1353.43	-7497.08	1.47	
15424.00	89.200	274.230	6732.70	7708.70	-1346.91	-7590.84	0.54	
15518.00	89.290	273.830	6733.94	7800.17	-1340.31	-7684.60	0.44	
15611.00	89.350	273.020	6735.05	7890.88	-1334.75	-7777.43	0.87	
15706.00	89.200	272.900	6736.25	7983.71	-1329.84	-7872.29	0.20	
15800.00	89.480	271.790	6737.33	8075.78	-1326.00	-7966.21	1.22	
15894.00	89.200	271.090	6738.41	8168.13	-1323.64	-8060.17	0.80	
15987.00	89.690	270.100	6739.31	8259.74	-1322.67	-8153.16	1.19	
16079.00	89.350	269.460	6740.09	8350.59	-1323.02	-8245.15	0.79	
16137.00	89.170	268.940	6740.83	8407.95	-1323.83	-8303.14	0.95	LAST BHI MWD SURVEY (1890'FNL & 2290'FWL, SEC.31)
16160.00	89.170	268.940	6741.17	8430.71	-1324.26	-8326.14	0.00	PROJECTION TO BIT (1891'FNL & 2267'FWL, SEC.31)



Actual Wellpath Report

AG 5N-31A-L AWP

Page 8 of 9



REFERENCE WELLPATH IDENTIFICATION

Operator	SRC ENERGY	Slot	SLOT#10 AG 5N-31A-L (1008'FNL & 572'FEL SEC 32)
Area	COLORADO	Well	AG 5N-31A-L
Field	WELD COUNTY (NAD83,TRUE NORTH)	Wellbore	AG 5N-31A-L AWB
Facility	SEC.32-T06N-R66W		

HOLE & CASING SECTIONS - Ref Wellbore: AG 5N-31A-L AWB Ref Wellpath: AG 5N-31A-L AWP

String/Diameter	Start MD [ft]	End MD [ft]	Interval [ft]	Start TVD [ft]	End TVD [ft]	Start N/S [ft]	Start E/W [ft]	End N/S [ft]	End E/W [ft]
13.5in Open Hole	20.00	1771.00	1751.00	20.00	1739.41	0.00	0.00	-173.99	216.55
9.625in Casing Surface	20.00	1771.00	1751.00	20.00	1739.41	0.00	0.00	-173.99	216.55
8.5in Open Hole	1771.00	16160.00	14389.00	1739.41	6741.17	-173.99	216.55	-1324.26	-8326.14

TARGETS

Name	TVD [ft]	North [ft]	East [ft]	Grid East [US ft]	Grid North [US ft]	Latitude	Longitude	Shape
SEC.31-T06N-R66W	-18.00	-2431.82	-11133.56	3185242.22	1404728.43	40°26'32.903"N	104°50'04.052"W	polygon
SEC.32-T06N-R66W	-18.00	-2431.82	-11133.56	3185242.22	1404728.43	40°26'32.903"N	104°50'04.052"W	polygon
AG 5N-31A-L BHL REV-2 (1920'FNL & 2312'FWL, SEC.31)	6742.50	-1353.55	-8280.70	3188086.30	1405829.32	40°26'43.569"N	104°49'27.159"W	circle
AG 5N-31A-L TOP OF PROD REV-2 (2038'FNL & 75'FEL, SEC.32)	6791.40	-1017.40	497.36	3196861.07	1406235.28	40°26'46.904"N	104°47'33.623"W	circle
AG 5N-31A-L BHL REV-1 ON PLAT (NIO-A, 2055'FNL & 75'FWL SEC 31)	6806.00	-1488.21	-10518.01	3185850.22	1405676.87	40°26'42.230"N	104°49'56.096"W	circle
AG 5N-31A-L TOP OF PROD (2068'FNL & 75'FEL SEC 32)	6806.00	-1047.40	497.36	3196861.31	1406205.29	40°26'46.608"N	104°47'33.623"W	circle

WELLPATH COMPOSITION - Ref Wellbore: AG 5N-31A-L AWB Ref Wellpath: AG 5N-31A-L AWP

Start MD [ft]	End MD [ft]	Positional Uncertainty Model	Log Name/Comment	Wellbore
20.00	1637.00	Custom BHI NaviTrak (Standard Rotating+Axial Corr) (Rockies 0.03Gt model)	BHI NAVITRAK W/APS EM 13.5" (STD ROTATING, AXIAL, ROCKIES GT)<106-1637>	AG 5N-31A-L AWB
1637.00	16137.00	Custom BHI AutoTrak Curve (IFR1, Short) (Rockies 0.03Gt model)	8 1/2" MONOBORE (6 3/4") ATUOTRAK CURVE <1809'-16160'>	AG 5N-31A-L AWB
16137.00	16160.00	Blind Drilling (std)	Projection to bit	AG 5N-31A-L AWB



Actual Wellpath Report

AG 5N-31A-L AWP

Page 9 of 9



REFERENCE WELLPATH IDENTIFICATION

Operator	SRC ENERGY	Slot	SLOT#10 AG 5N-31A-L (1008'FNL & 572'FEL SEC 32)
Area	COLORADO	Well	AG 5N-31A-L
Field	WELD COUNTY (NAD83,TRUE NORTH)	Wellbore	AG 5N-31A-L AWB
Facility	SEC.32-T06N-R66W		

WELLPATH COMMENTS

MD [ft]	Inclination [°]	Azimuth [°]	TVD [ft]	Comment
7475.00	91.290	262.820	6790.57	LANDING POINT (2017'FNL & 230'FEL, SEC.32)
16137.00	89.170	268.940	6740.83	LAST BHI MWD SURVEY (1890'FNL & 2290'FWL, SEC.31)
16160.00	89.170	268.940	6741.17	PROJECTION TO BIT (1891'FNL & 2267'FWL, SEC.31)