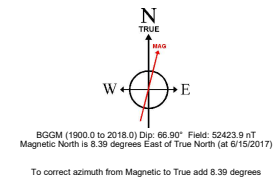
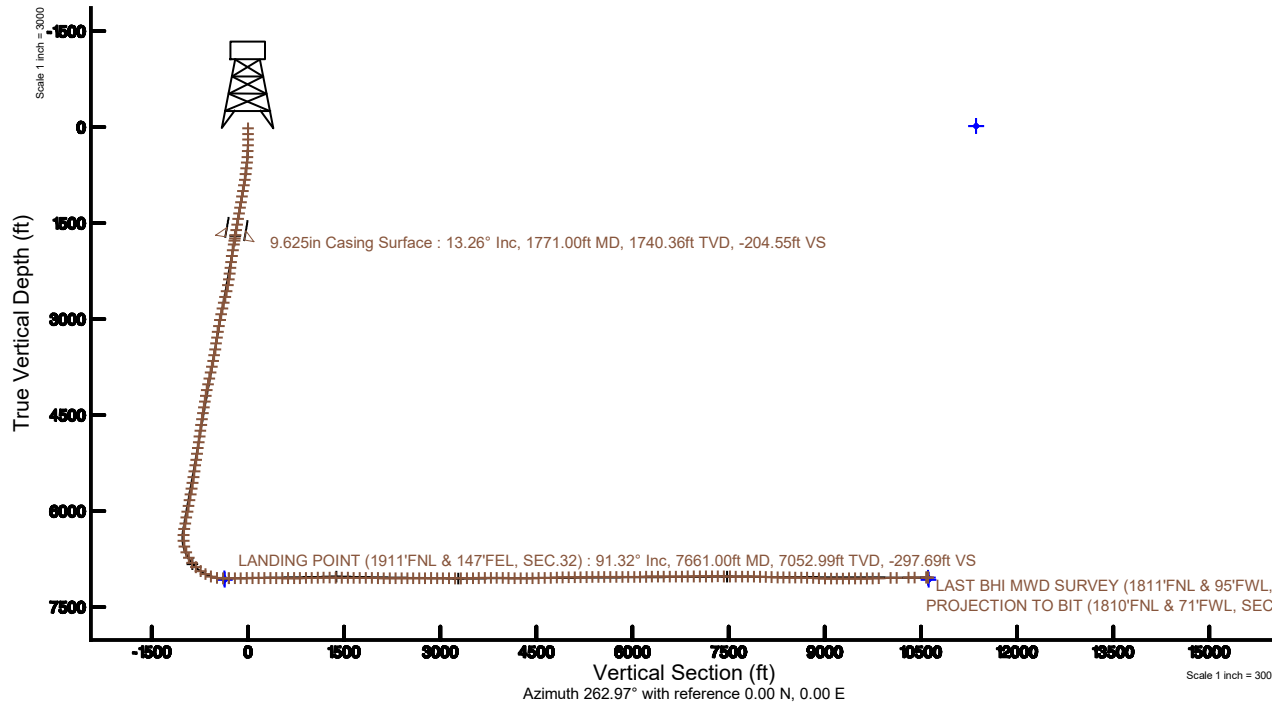
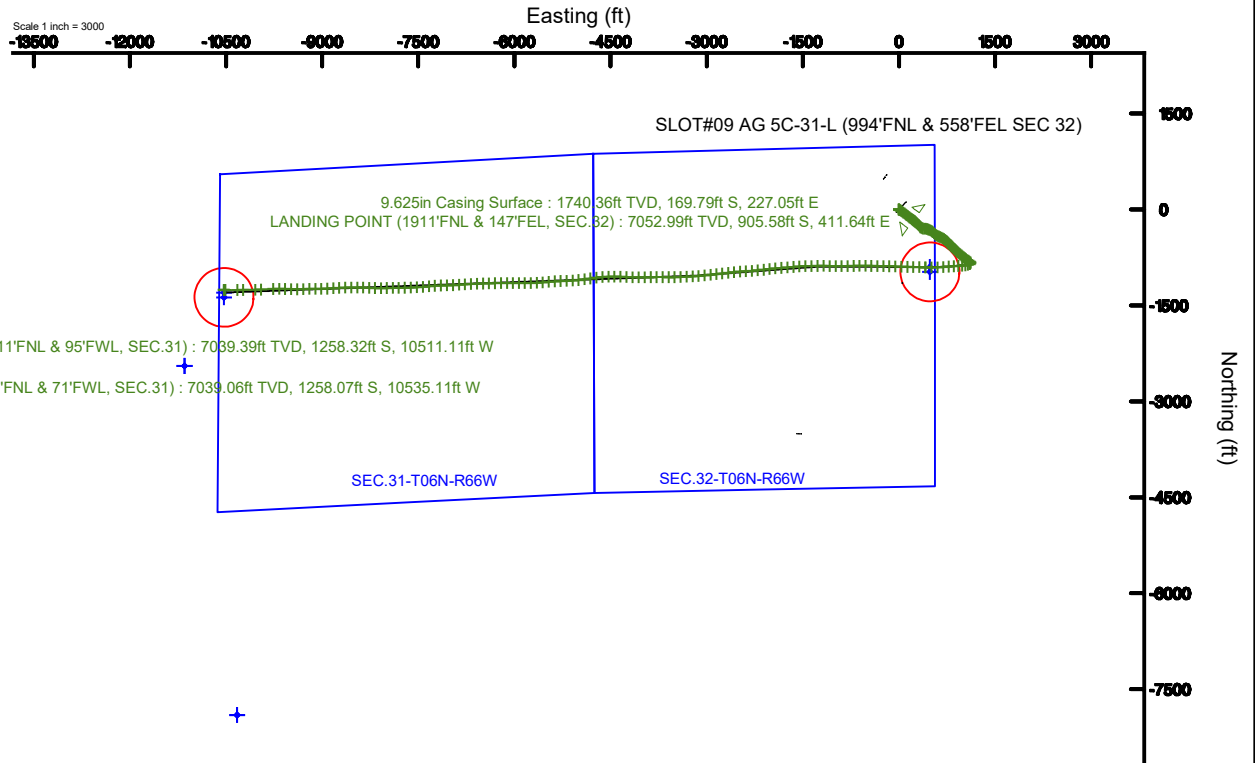


SRC ENERGY

Location: COLORADO Slot: SLOT#09 AG 5C-31-L (994'FNL & 558'FEL SEC 32)
Field: WELD COUNTY (NAD83, TRUE NORTH) Well: AG 5C-31-L
Facility: SEC.32-T06N-R66W Wellbore: AG 5C-31-L PWB

Plot reference wellpath is AG 5C-31-L REV-D.0) PWP	Grid System: NAD83 / Lambert Colorado SP, Northern Zone (501), US feet
True vertical depths are referenced to PRECISION 462 (20') (RKB)	* = Wellpath was transformed from a different geodetic datum
Measured depths are referenced to PRECISION 462 (20') (RKB)	North Reference: True north
PRECISION 462 (20') (RKB) to Mean Sea Level: 4726 feet	Scale: True distance
Mean Sea Level to Mud line (At Slot: SLOT#09 AG 5C-31-L (994'FNL & 558'FEL SEC 32)): 0 feet	Depths are in feet
Coordinates are in feet referenced to Slot	Created by: doddanna on 2017-12-20
	Database: WellArchitectDB





Actual Wellpath Report

AG 5C-31-L AWP

Page 1 of 10



REFERENCE WELLPATH IDENTIFICATION

Operator	SRC ENERGY	Slot	SLOT#09 AG 5C-31-L (994'FNL & 558'FEL SEC 32)
Area	COLORADO	Well	AG 5C-31-L
Field	WELD COUNTY (NAD83,TRUE NORTH)	Wellbore	AG 5C-31-L AWB
Facility	SEC.32-T06N-R66W		

REPORT SETUP INFORMATION

Projection System	NAD83 / Lambert Colorado SP, Northern Zone (501), US feet	Software System	WellArchitect® 5.0
North Reference	True	User	Doddanna
Scale	0.999963	Report Generated	12/20/2017 at 12:50:48 PM
Convergence at slot	0.46° East	Database/Source file	WellArchitectDB/AG_5C-31-L_AWP.xml

WELLPATH LOCATION

	Local coordinates		Grid coordinates		Geographic coordinates	
	North[ft]	East[ft]	Easting[US ft]	Northing[US ft]	Latitude	Longitude
Slot Location	-116.88	-108.85	3196369.13	1407263.74	40°26'57.106"N	104°47'39.880"W
Facility Reference Pt			3196477.05	1407381.48	40°26'58.261"N	104°47'38.472"W
Field Reference Pt			3171284.48	1426358.81	40°30'07.643"N	104°53'02.634"W

WELLPATH DATUM

Calculation method	Minimum curvature	PRECISION 462 (20') (RKB) to Facility Vertical Datum	4726.00ft
Horizontal Reference Pt	Slot	PRECISION 462 (20') (RKB) to Mean Sea Level	4726.00ft
Vertical Reference Pt	PRECISION 462 (20') (RKB)	PRECISION 462 (20') (RKB) to Mud Line at Slot (SLOT#09 AG 5C-31-L (994'FNL & 558'FEL SEC 32))	4726.00ft
MD Reference Pt	PRECISION 462 (20') (RKB)	Section Origin	N 0.00, E 0.00 ft
Field Vertical Reference	Mean Sea Level	Section Azimuth	262.97°



Actual Wellpath Report

AG 5C-31-L AWP

Page 2 of 10



REFERENCE WELLPATH IDENTIFICATION

Operator	SRC ENERGY	Slot	SLOT#09 AG 5C-31-L (994'FNL & 558'FEL SEC 32)
Area	COLORADO	Well	AG 5C-31-L
Field	WELD COUNTY (NAD83,TRUE NORTH)	Wellbore	AG 5C-31-L AWB
Facility	SEC.32-T06N-R66W		

WELLPATH DATA (200 stations) † = interpolated/extrapolated station

MD [ft]	Inclination [°]	Azimuth [°]	TVD [ft]	Vert Sect [ft]	North [ft]	East [ft]	DLS [°/100ft]	Comments
0.00†	0.000	268.300	0.00	0.00	0.00	0.00	0.00	
20.00	0.000	268.300	20.00	0.00	0.00	0.00	0.00	
106.00	0.780	268.300	106.00	0.58	-0.02	-0.59	0.91	
193.00	0.290	254.920	192.99	1.39	-0.09	-1.39	0.58	
283.00	0.830	79.170	282.99	0.97	-0.03	-0.97	1.24	
375.00	3.140	114.300	374.93	-1.85	-0.94	1.98	2.73	
467.00	5.360	118.190	466.67	-7.52	-4.01	8.07	2.43	
557.00	7.590	122.550	556.09	-15.53	-9.19	16.78	2.54	
647.00	8.780	125.950	645.18	-25.14	-16.42	27.35	1.43	
737.00	10.460	128.870	733.91	-35.85	-25.58	39.28	1.94	
827.00	12.750	127.730	822.06	-48.59	-36.79	53.49	2.56	
917.00	13.120	126.840	909.78	-63.00	-48.99	69.52	0.47	
1007.00	13.260	127.960	997.40	-77.67	-61.46	85.84	0.32	
1097.00	13.370	127.930	1084.98	-92.33	-74.21	102.18	0.12	
1187.00	13.690	128.240	1172.49	-107.19	-87.20	118.75	0.36	
1277.00	13.810	127.730	1259.91	-122.31	-100.36	135.61	0.19	
1367.00	13.910	129.050	1347.29	-137.44	-113.75	152.51	0.37	
1457.00	13.770	128.990	1434.67	-152.38	-127.31	169.24	0.16	
1547.00	13.130	127.420	1522.21	-167.12	-140.26	185.68	0.82	
1637.00	13.020	124.860	1609.87	-181.96	-152.26	202.12	0.65	
1720.00	13.180	124.910	1690.71	-195.96	-163.02	217.55	0.19	
1806.00	13.310	126.820	1774.43	-210.39	-174.57	233.52	0.53	
1869.00	13.570	127.930	1835.70	-220.85	-183.46	245.15	0.58	
1961.00	13.490	129.750	1925.15	-235.84	-196.95	261.91	0.47	
2055.00	13.080	134.550	2016.64	-249.95	-211.43	277.92	1.25	
2149.00	13.690	138.310	2108.08	-262.89	-227.19	292.90	1.13	
2241.00	13.130	141.650	2197.58	-274.51	-243.52	306.63	1.04	
2335.00	13.670	145.280	2289.02	-285.22	-261.02	319.58	1.06	
2428.00	13.710	133.000	2379.40	-297.41	-277.58	333.90	3.12	
2522.00	13.640	116.750	2470.76	-313.79	-290.17	351.95	4.07	



Actual Wellpath Report

AG 5C-31-L AWP

Page 3 of 10



REFERENCE WELLPATH IDENTIFICATION

Operator	SRC ENERGY	Slot	SLOT#09 AG 5C-31-L (994'FNL & 558'FEL SEC 32)
Area	COLORADO	Well	AG 5C-31-L
Field	WELD COUNTY (NAD83,TRUE NORTH)	Wellbore	AG 5C-31-L AWB
Facility	SEC.32-T06N-R66W		

WELLPATH DATA (200 stations)

MD [ft]	Inclination [°]	Azimuth [°]	TVD [ft]	Vert Sect [ft]	North [ft]	East [ft]	DLS [°/100ft]	Comments
2616.00	13.690	105.400	2562.12	-333.28	-298.11	372.58	2.85	
2710.00	13.800	91.170	2653.45	-354.67	-301.29	394.52	3.59	
2804.00	13.230	93.210	2744.85	-376.35	-302.12	416.47	0.79	
2898.00	13.860	106.090	2836.26	-397.29	-305.85	438.03	3.27	
2990.00	13.940	113.410	2925.57	-416.98	-313.31	458.79	1.91	
3083.00	12.820	113.910	3016.05	-435.49	-321.94	478.50	1.21	
3177.00	13.930	117.180	3107.50	-453.80	-331.33	498.10	1.43	
3271.00	12.740	127.010	3198.97	-470.61	-342.74	516.44	2.72	
3366.00	12.030	135.790	3291.77	-484.12	-356.15	531.71	2.12	
3458.00	13.800	138.930	3381.44	-496.06	-371.29	545.61	2.07	
3553.00	14.120	132.300	3473.64	-509.95	-387.63	561.63	1.72	
3647.00	14.310	127.230	3564.76	-525.74	-402.38	579.36	1.34	
3740.00	14.240	112.960	3654.92	-543.89	-413.80	599.05	3.78	
3833.00	14.310	112.460	3745.05	-563.80	-422.65	620.20	0.15	
3927.00	14.210	114.210	3836.15	-583.77	-431.82	641.46	0.47	
4022.00	14.090	116.370	3928.27	-603.40	-441.74	662.45	0.57	
4116.00	14.210	117.400	4019.42	-622.47	-452.13	682.95	0.30	
4210.00	14.210	120.050	4110.54	-641.19	-463.22	703.18	0.69	
4304.00	14.160	128.640	4201.69	-658.43	-476.18	722.15	2.24	
4396.00	14.230	133.470	4290.88	-673.48	-490.98	739.14	1.29	
4490.00	14.250	134.720	4381.99	-687.99	-507.07	755.75	0.33	
4583.00	14.170	135.100	4472.15	-702.07	-523.19	771.92	0.13	
4677.00	13.870	135.640	4563.35	-715.96	-539.39	787.91	0.35	
4772.00	13.760	137.590	4655.60	-729.41	-555.88	803.50	0.50	
4865.00	13.840	137.980	4745.92	-742.19	-572.31	818.40	0.13	
4959.00	13.960	137.410	4837.16	-755.23	-589.01	833.60	0.19	
5051.00	13.450	134.720	4926.55	-768.31	-604.71	848.71	0.89	
5144.00	13.060	135.980	5017.07	-781.33	-619.87	863.70	0.52	
5237.00	13.270	134.050	5107.62	-794.35	-634.85	878.67	0.52	
5330.00	13.360	132.460	5198.12	-808.04	-649.52	894.27	0.41	



Actual Wellpath Report

AG 5C-31-L AWP

Page 4 of 10



REFERENCE WELLPATH IDENTIFICATION

Operator	SRC ENERGY	Slot	SLOT#09 AG 5C-31-L (994'FNL & 558'FEL SEC 32)
Area	COLORADO	Well	AG 5C-31-L
Field	WELD COUNTY (NAD83,TRUE NORTH)	Wellbore	AG 5C-31-L AWP
Facility	SEC.32-T06N-R66W		

WELLPATH DATA (200 stations)

MD [ft]	Inclination [°]	Azimuth [°]	TVD [ft]	Vert Sect [ft]	North [ft]	East [ft]	DLS [°/100ft]	Comments
5422.00	12.330	130.670	5287.82	-821.55	-663.10	909.56	1.20	
5516.00	12.170	129.910	5379.68	-835.07	-676.00	924.78	0.24	
5609.00	13.660	128.730	5470.33	-849.43	-689.16	940.86	1.63	
5701.00	13.740	130.240	5559.71	-864.42	-703.01	957.68	0.40	
5794.00	14.290	132.570	5649.94	-879.35	-717.91	974.56	0.85	
5888.00	14.350	130.970	5741.02	-894.67	-733.40	991.90	0.43	
5982.00	14.380	128.050	5832.08	-910.70	-748.23	1009.89	0.77	
6075.00	14.400	126.450	5922.17	-927.25	-762.22	1028.29	0.43	
6169.00	14.360	126.080	6013.22	-944.24	-776.03	1047.11	0.11	
6262.00	14.440	125.240	6103.30	-961.24	-789.51	1065.90	0.24	
6355.00	13.350	122.970	6193.58	-978.04	-802.05	1084.38	1.31	
6447.00	13.680	123.610	6283.03	-994.44	-813.85	1102.35	0.39	
6540.00	8.350	154.490	6374.36	-1004.94	-826.05	1114.43	8.36	
6634.00	9.510	196.130	6467.31	-1004.04	-839.68	1115.22	6.83	
6727.00	14.680	237.020	6558.37	-990.39	-853.51	1103.17	10.43	
6821.00	22.150	254.960	6647.56	-962.07	-864.62	1076.00	9.89	
6913.00	28.800	260.810	6730.58	-922.70	-872.67	1037.33	7.72	
7007.00	36.810	264.590	6809.54	-871.84	-878.95	986.85	8.79	
7099.00	45.740	266.640	6878.61	-811.29	-883.49	926.40	9.82	
7193.00	54.560	266.640	6938.79	-739.34	-887.71	854.43	9.38	
7286.00	62.120	266.070	6987.57	-660.38	-892.76	775.49	8.15	
7379.00	71.900	265.760	7023.85	-574.98	-898.86	690.20	10.52	
7473.00	80.470	267.490	7046.27	-483.98	-904.20	599.17	9.29	
7568.00	90.060	270.030	7054.11	-389.90	-906.23	504.63	10.44	
7661.00	91.320	270.780	7052.99	-297.69	-905.58	411.64	1.58	LANDING POINT (1911'FNL & 147'FEL, SEC.32)
7755.00	91.140	273.180	7050.97	-204.88	-902.33	317.73	2.56	
7849.00	90.280	270.630	7049.80	-112.04	-899.20	223.79	2.86	
7942.00	90.400	271.410	7049.25	-19.96	-897.55	130.81	0.85	
8036.00	90.150	271.530	7048.80	73.01	-895.14	36.84	0.30	
8129.00	89.940	272.260	7048.73	164.88	-892.06	-56.11	0.82	



Actual Wellpath Report

AG 5C-31-L AWP

Page 5 of 10



REFERENCE WELLPATH IDENTIFICATION

Operator	SRC ENERGY	Slot	SLOT#09 AG 5C-31-L (994'FNL & 558'FEL SEC 32)
Area	COLORADO	Well	AG 5C-31-L
Field	WELD COUNTY (NAD83,TRUE NORTH)	Wellbore	AG 5C-31-L AWB
Facility	SEC.32-T06N-R66W		

WELLPATH DATA (200 stations)

MD [ft]	Inclination [°]	Azimuth [°]	TVD [ft]	Vert Sect [ft]	North [ft]	East [ft]	DLS [°/100ft]	Comments
8224.00	90.060	272.470	7048.73	258.61	-888.14	-151.02	0.25	
8317.00	90.000	270.830	7048.68	350.54	-885.46	-243.98	1.76	
8410.00	90.000	270.670	7048.68	442.68	-884.25	-336.97	0.17	
8504.00	89.820	271.410	7048.83	535.75	-882.54	-430.96	0.81	
8596.00	90.000	270.120	7048.97	626.90	-881.31	-522.95	1.42	
8689.00	89.910	269.500	7049.04	719.23	-881.62	-615.95	0.67	
8782.00	90.000	268.770	7049.12	811.70	-883.02	-708.94	0.79	
8876.00	91.540	268.660	7047.85	905.21	-885.13	-802.90	1.64	
8969.00	90.960	269.110	7045.82	997.69	-886.94	-895.86	0.79	
9061.00	91.170	271.200	7044.11	1088.95	-886.69	-987.84	2.28	
9155.00	91.020	272.110	7042.32	1181.85	-883.98	-1081.78	0.98	
9250.00	89.080	269.950	7042.24	1275.91	-882.27	-1176.76	3.06	
9344.00	89.260	269.160	7043.60	1369.28	-883.00	-1270.74	0.86	
9439.00	90.030	269.750	7044.19	1463.66	-883.90	-1365.74	1.02	
9534.00	89.630	267.900	7044.47	1558.16	-885.85	-1460.71	1.99	
9627.00	89.910	265.780	7044.84	1650.95	-890.98	-1553.56	2.30	
9720.00	89.570	265.030	7045.26	1743.86	-898.43	-1646.26	0.89	
9814.00	89.410	265.500	7046.10	1837.78	-906.19	-1739.94	0.53	
9910.00	89.170	265.800	7047.29	1933.67	-913.47	-1835.65	0.40	
10003.00	89.200	264.090	7048.61	2026.60	-921.66	-1928.28	1.84	
10096.00	88.860	263.170	7050.19	2119.58	-931.98	-2020.69	1.05	
10188.00	89.690	263.700	7051.35	2211.57	-942.50	-2112.08	1.07	
10280.00	90.400	264.940	7051.28	2303.54	-951.60	-2203.62	1.55	
10373.00	90.250	265.860	7050.75	2396.45	-959.06	-2296.32	1.00	
10465.00	90.250	266.830	7050.35	2488.29	-964.92	-2388.13	1.05	
10557.00	89.570	265.130	7050.49	2580.16	-971.37	-2479.90	1.99	
10650.00	90.740	263.980	7050.24	2673.12	-980.20	-2572.48	1.76	
10742.00	89.970	263.660	7049.67	2765.11	-990.10	-2663.94	0.91	
10836.00	90.280	263.190	7049.47	2859.10	-1000.87	-2757.32	0.60	
10928.00	89.170	263.700	7049.91	2951.10	-1011.37	-2848.72	1.33	



Actual Wellpath Report

AG 5C-31-L AWP

Page 6 of 10



REFERENCE WELLPATH IDENTIFICATION

Operator	SRC ENERGY	Slot	SLOT#09 AG 5C-31-L (994'FNL & 558'FEL SEC 32)
Area	COLORADO	Well	AG 5C-31-L
Field	WELD COUNTY (NAD83,TRUE NORTH)	Wellbore	AG 5C-31-L AWB
Facility	SEC.32-T06N-R66W		

WELLPATH DATA (200 stations)

MD [ft]	Inclination [°]	Azimuth [°]	TVD [ft]	Vert Sect [ft]	North [ft]	East [ft]	DLS [°/100ft]	Comments
11020.00	89.230	263.920	7051.19	3043.08	-1021.29	-2940.17	0.25	
11115.00	89.350	264.600	7052.37	3138.05	-1030.79	-3034.69	0.73	
11208.00	89.290	264.640	7053.47	3231.00	-1039.51	-3127.27	0.08	
11301.00	90.990	266.240	7053.25	3323.91	-1046.90	-3219.97	2.51	
11394.00	90.950	266.970	7051.67	3416.71	-1052.41	-3312.80	0.79	
11488.00	90.990	268.170	7050.08	3510.39	-1056.39	-3406.70	1.28	
11582.00	90.920	269.550	7048.51	3603.88	-1058.26	-3500.66	1.47	
11676.00	90.920	270.160	7047.00	3697.19	-1058.50	-3594.65	0.65	
11769.00	90.680	270.310	7045.71	3789.43	-1058.12	-3687.64	0.30	
11863.00	90.620	269.600	7044.64	3882.73	-1058.19	-3781.63	0.76	
11956.00	88.120	269.540	7045.66	3975.10	-1058.89	-3874.62	2.69	
12050.00	87.870	269.600	7048.95	4068.42	-1059.59	-3968.56	0.27	
12144.00	89.320	269.840	7051.26	4161.73	-1060.05	-4062.52	1.56	
12239.00	90.310	271.430	7051.56	4255.88	-1059.00	-4157.51	1.97	
12334.00	90.800	272.260	7050.64	4349.74	-1055.94	-4252.46	1.01	
12428.00	90.430	271.960	7049.63	4442.54	-1052.48	-4346.39	0.51	
12521.00	90.830	270.460	7048.61	4534.57	-1050.52	-4439.36	1.67	
12615.00	91.050	268.080	7047.07	4627.98	-1051.72	-4533.33	2.54	
12710.00	91.910	265.090	7044.61	4722.75	-1057.37	-4628.12	3.27	
12805.00	91.910	263.610	7041.45	4817.67	-1066.72	-4722.61	1.56	
12897.00	91.850	261.400	7038.43	4909.61	-1078.71	-4813.76	2.40	
12992.00	90.990	262.160	7036.08	5004.56	-1092.29	-4907.76	1.21	
13086.00	90.150	264.410	7035.14	5098.54	-1103.28	-5001.10	2.55	
13178.00	90.310	266.780	7034.77	5190.44	-1110.35	-5092.82	2.58	
13272.00	90.740	268.060	7033.91	5284.15	-1114.58	-5186.72	1.44	
13364.00	90.680	267.180	7032.77	5375.84	-1118.40	-5278.63	0.96	
13457.00	90.590	266.450	7031.74	5468.62	-1123.56	-5371.48	0.79	
13549.00	90.090	264.180	7031.19	5560.54	-1131.08	-5463.17	2.53	
13644.00	89.880	264.990	7031.22	5655.50	-1140.04	-5557.74	0.88	
13738.00	89.970	266.420	7031.34	5749.39	-1147.08	-5651.48	1.52	



Actual Wellpath Report

AG 5C-31-L AWP

Page 7 of 10



REFERENCE WELLPATH IDENTIFICATION

Operator	SRC ENERGY	Slot	SLOT#09 AG 5C-31-L (994'FNL & 558'FEL SEC 32)
Area	COLORADO	Well	AG 5C-31-L
Field	WELD COUNTY (NAD83,TRUE NORTH)	Wellbore	AG 5C-31-L AWB
Facility	SEC.32-T06N-R66W		

WELLPATH DATA (200 stations)

MD (ft)	Inclination (°)	Azimuth (°)	TVD (ft)	Vert Sect (ft)	North (ft)	East (ft)	DLS (°/100ft)	Comments
13832.00	90.090	268.750	7031.29	5843.08	-1151.04	-5745.39	2.48	
13924.00	90.310	269.740	7030.97	5934.53	-1152.25	-5837.38	1.10	
14017.00	90.370	270.130	7030.42	6026.84	-1152.36	-5930.38	0.42	
14110.00	90.710	269.910	7029.54	6119.13	-1152.33	-6023.37	0.44	
14202.00	90.580	270.320	7028.51	6210.41	-1152.14	-6115.37	0.47	
14296.00	90.430	270.210	7027.68	6303.64	-1151.71	-6209.36	0.20	
14389.00	90.460	268.390	7026.96	6396.07	-1152.84	-6302.35	1.96	
14483.00	90.150	268.470	7026.45	6489.64	-1155.42	-6396.31	0.34	
14576.00	90.400	268.400	7026.01	6582.22	-1157.96	-6489.27	0.28	
14670.00	90.180	267.580	7025.53	6675.86	-1161.26	-6583.21	0.90	
14765.00	90.460	266.880	7025.00	6770.59	-1165.85	-6678.10	0.79	
14859.00	90.460	266.880	7024.25	6864.37	-1170.96	-6771.96	0.00	
14952.00	90.400	265.780	7023.55	6957.20	-1176.92	-6864.76	1.18	
15046.00	89.850	266.150	7023.34	7051.08	-1183.53	-6958.53	0.71	
15140.00	90.030	270.040	7023.44	7144.68	-1186.65	-7052.46	4.14	
15235.00	90.340	267.890	7023.14	7239.16	-1188.37	-7147.44	2.29	
15329.00	90.150	266.400	7022.73	7332.90	-1193.05	-7241.32	1.60	
15422.00	89.380	264.320	7023.12	7425.82	-1200.57	-7334.01	2.38	
15517.00	89.600	265.230	7023.96	7520.76	-1209.23	-7428.61	0.99	
15609.00	89.540	266.550	7024.65	7612.64	-1215.82	-7520.37	1.44	
15705.00	89.660	267.550	7025.32	7708.39	-1220.76	-7616.24	1.05	
15799.00	89.880	268.940	7025.70	7801.99	-1223.64	-7710.19	1.50	
15894.00	88.980	269.370	7026.64	7896.43	-1225.04	-7805.17	1.05	
15986.00	88.580	268.540	7028.60	7987.91	-1226.72	-7897.13	1.00	
16078.00	88.680	268.670	7030.80	8079.44	-1228.96	-7989.08	0.18	
16170.00	87.040	269.600	7034.24	8170.84	-1230.34	-8081.00	2.05	
16263.00	88.060	272.230	7038.21	8262.85	-1228.86	-8173.90	3.03	
16355.00	90.340	271.960	7039.50	8353.67	-1225.50	-8265.82	2.50	
16450.00	89.780	272.250	7039.40	8447.46	-1222.01	-8360.75	0.66	
16542.00	89.940	271.260	7039.62	8538.38	-1219.19	-8452.71	1.09	



Actual Wellpath Report

AG 5C-31-L AWP

Page 8 of 10



REFERENCE WELLPATH IDENTIFICATION

Operator	SRC ENERGY	Slot	SLOT#09 AG 5C-31-L (994'FNL & 558'FEL SEC 32)
Area	COLORADO	Well	AG 5C-31-L
Field	WELD COUNTY (NAD83,TRUE NORTH)	Wellbore	AG 5C-31-L AWB
Facility	SEC.32-T06N-R66W		

WELLPATH DATA (200 stations)

MD [ft]	Inclination [°]	Azimuth [°]	TVD [ft]	Vert Sect [ft]	North [ft]	East [ft]	DLS [°/100ft]	Comments
16637.00	88.090	268.680	7041.26	8632.65	-1219.24	-8547.68	3.34	
16730.00	88.000	267.510	7044.43	8725.22	-1222.33	-8640.58	1.26	
16823.00	87.910	267.370	7047.75	8817.88	-1226.48	-8733.42	0.18	
16916.00	87.660	265.500	7051.34	8910.64	-1232.26	-8826.17	2.03	
17009.00	89.170	267.080	7053.92	9003.44	-1238.27	-8918.94	2.35	
17103.00	89.820	270.990	7054.74	9096.89	-1239.86	-9012.90	4.22	
17197.00	89.940	269.550	7054.94	9190.13	-1239.41	-9106.90	1.54	
17291.00	90.180	268.300	7054.84	9283.62	-1241.18	-9200.88	1.35	
17386.00	90.310	267.100	7054.44	9378.29	-1244.99	-9295.80	1.27	
17480.00	90.000	269.710	7054.18	9471.86	-1247.60	-9389.75	2.80	
17573.00	90.060	271.440	7054.13	9564.04	-1246.67	-9482.75	1.86	
17668.00	90.000	272.720	7054.08	9657.84	-1243.22	-9577.68	1.35	
17761.00	90.460	270.540	7053.71	9749.77	-1240.58	-9670.64	2.40	
17853.00	91.570	266.560	7052.08	9841.30	-1242.90	-9762.57	4.49	
18042.00	91.450	267.340	7047.10	10029.78	-1252.96	-9951.24	0.42	
18136.00	90.830	268.990	7045.23	10123.37	-1255.97	-10045.17	1.87	
18323.00	90.770	269.700	7042.62	10309.19	-1258.10	-10232.14	0.38	
18415.00	90.550	269.600	7041.56	10400.56	-1258.67	-10324.13	0.26	
18602.00	90.780	270.610	7039.39	10586.10	-1258.32	-10511.11	0.55	LAST BHI MWD SURVEY (1811'FNL & 95'FWL, SEC.31)
18626.00	90.780	270.610	7039.06	10609.88	-1258.07	-10535.11	0.00	PROJECTION TO BIT (1810'FNL & 71'FWL, SEC.31)

HOLE & CASING SECTIONS - Ref Wellbore: AG 5C-31-L AWB Ref Wellpath: AG 5C-31-L AWP

String/Diameter	Start MD [ft]	End MD [ft]	Interval [ft]	Start TVD [ft]	End TVD [ft]	Start N/S [ft]	Start E/W [ft]	End N/S [ft]	End E/W [ft]
13.5in Open Hole	20.00	1771.00	1751.00	20.00	1740.36	0.00	0.00	-169.79	227.05
9.625in Casing Surface	20.00	1771.00	1751.00	20.00	1740.36	0.00	0.00	-169.79	227.05
8.5in Open Hole	1771.00	18627.00	16856.00	1740.36	N/A	-169.79	227.05	N/A	N/A



Actual Wellpath Report

AG 5C-31-L AWP

Page 9 of 10



REFERENCE WELLPATH IDENTIFICATION

Operator	SRC ENERGY	Slot	SLOT#09 AG 5C-31-L (994'FNL & 558'FEL SEC 32)
Area	COLORADO	Well	AG 5C-31-L
Field	WELD COUNTY (NAD83, TRUE NORTH)	Wellbore	AG 5C-31-L AWB
Facility	SEC.32-T06N-R66W		

TARGETS

Name	TVD [ft]	North [ft]	East [ft]	Grid East [US ft]	Grid North [US ft]	Latitude	Longitude	Shape
SEC.31-T06N-R66W	-18.00	-2446.79	-11147.17	3185242.22	1404728.43	40°26'32.903"N	104°50'04.052"W	polygon
SEC.32-T06N-R66W	-18.00	-2446.79	-11147.17	3185242.22	1404728.43	40°26'32.903"N	104°50'04.052"W	polygon
AG 5C-31-L BHL REV-2 (1851'FNL & 75'FWL, SEC.31)	7042.09	-1298.85	-10530.79	3185849.42	1405881.19	40°26'44.249"N	104°49'56.086"W	point
AG 5C-31-L TOP OF PROD REV-2 (1906'FNL & 75'FEL, SEC.32)	7054.65	-900.35	483.75	3196860.01	1406367.30	40°26'48.209"N	104°47'33.623"W	point
AG 5C-31-L BHL REV-1 ON PLAT (CDLL, 1926'FNL & 75'FWL SEC 31)	7074.00	-1373.85	-10530.79	3185850.02	1405806.20	40°26'43.508"N	104°49'56.086"W	circle
AG 5C-31-L TOP OF PROD (1981'FNL & 75'FEL SEC 32)	7074.00	-975.35	483.75	3196860.61	1406292.31	40°26'47.468"N	104°47'33.623"W	circle

WELLPATH COMPOSITION - Ref Wellbore: AG 5C-31-L AWB Ref Wellpath: AG 5C-31-L AWP

Start MD [ft]	End MD [ft]	Positional Uncertainty Model	Log Name/Comment	Wellbore
20.00	1720.00	Custom BHI NaviTrak (Standard Rotating+Axial Corr) (Rockies 0.03Gt model)	BHI NAVITRAK W/APS EM 13.5" (STD ROTATING, AXIAL, ROCKIES GT)<106-1720>	AG 5C-31-L AWB
1720.00	18602.00	Custom BHI AutoTrak Curve (IFR1, Short) (Rockies 0.03Gt model)	ATC SURVEYS <1806'-18602'>	AG 5C-31-L AWB
18602.00	18626.00	Blind Drilling (std)	Projection to bit	AG 5C-31-L AWB



Actual Wellpath Report

AG 5C-31-L AWP

Page 10 of 10



REFERENCE WELLPATH IDENTIFICATION

Operator	SRC ENERGY	Slot	SLOT#09 AG 5C-31-L (994'FNL & 558'FEL SEC 32)
Area	COLORADO	Well	AG 5C-31-L
Field	WELD COUNTY (NAD83,TRUE NORTH)	Wellbore	AG 5C-31-L AWB
Facility	SEC.32-T06N-R66W		

WELLPATH COMMENTS

MD [ft]	Inclination [°]	Azimuth [°]	TVD [ft]	Comment
7661.00	91.320	270.780	7052.99	LANDING POINT (1911'FNL & 147'FEL, SEC.32)
18602.00	90.780	270.610	7039.39	LAST BHI MWD SURVEY (1811'FNL & 95'FWL, SEC.31)
18626.00	90.780	270.610	7039.06	PROJECTION TO BIT (1810'FNL & 71'FWL, SEC.31)