

GOLDEN EAGLE MINE NW-3-3-95 API# 05-071-06397 – TIMBER CREEK
OGCC OPERATOR NUMBER 10672 – INSPECTION DATE: MAY 07, 2018
CORRECTIVE ACTIONS COMPLETED REGARDING COGCC FIR DOCUMENT # 680102767



PHOTO 1: OVERVIEW OF LOCATION TO NORTH. THE WELL PAD AND ACCESS ROAD WERE RECONTOURED TO MATCH THE SURROUNDING TERRAIN, THIS PROVIDES SOIL DECOMPACTION. THE ROCK ON THE FILL SLOPE WAS PULLED UP TO STABILIZE THE SLOPE. GRADING TECHNIQUES WERE INSTALLED ON THE CONTOUR TO PROVIDE SOIL STABILIZATION, PROMOTE GROUND INFILTRATION AND TO PREPARE THE SOIL FOR SEEDING. THE EARTH DISTURBANCE ON THE WELL PAD WAS STABILIZED BY HYDRO-SEEDING USING AN APPROVED HILL RANCH SEED MIX TO PROMOTE THE ESTABLISHMENT OF VEGETATION.

GOLDEN EAGLE MINE NW-3-3-95 API# 05-071-06397 – TIMBER CREEK
OGCC OPERATOR NUMBER 10672 – INSPECTION DATE: MAY 08, 2018
CORRECTIVE ACTIONS COMPLETED REGARDING COGCC FIR DOCUMENT # 680102767

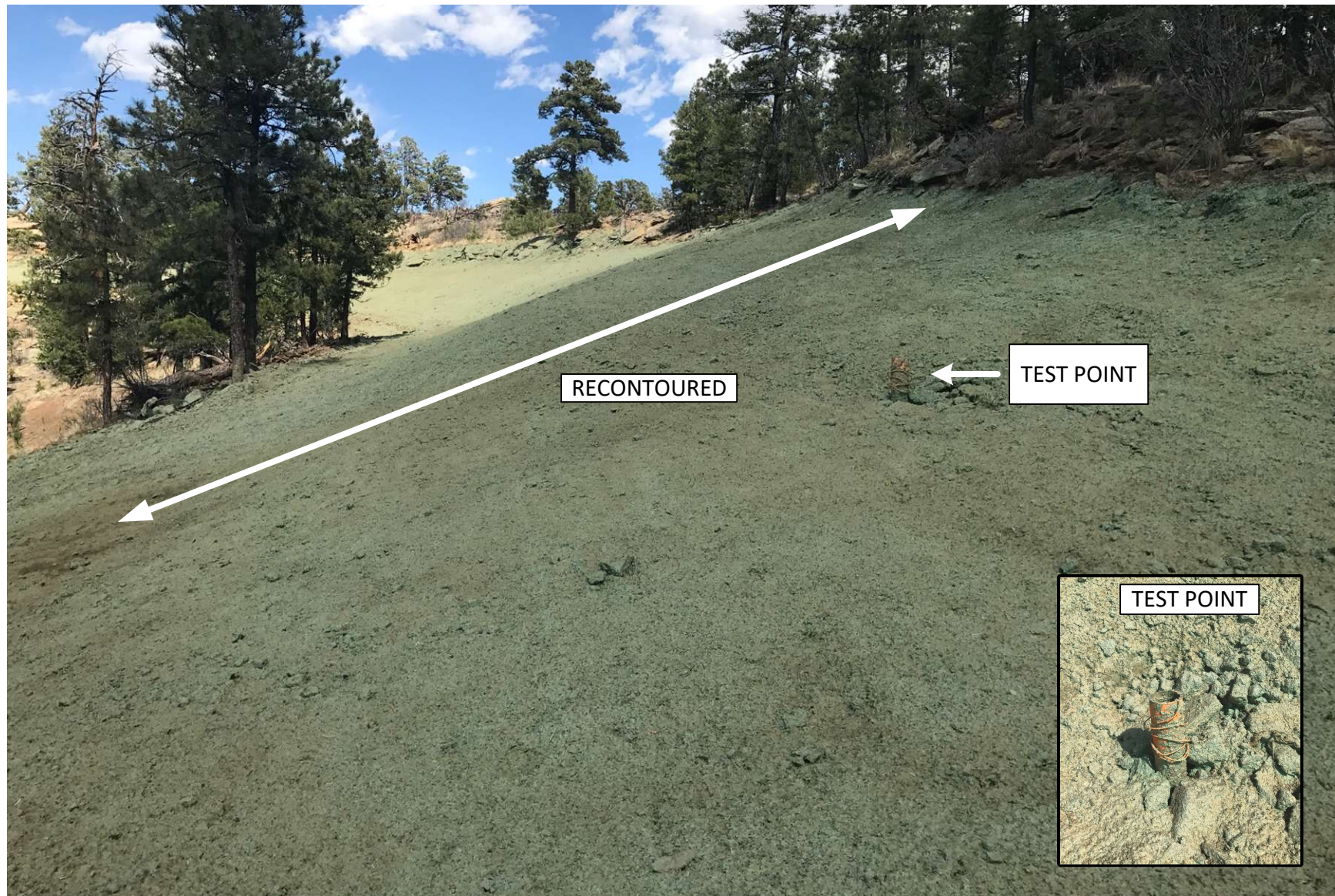


PHOTO 2: VIEW NORTH ALONG RECLAIMED ACCESS ROAD LEADING INTO LOCATION. THERE IS AN ACTIVE PIPELINE RUNNING THROUGH THE RECLAMATION. THERE IS A PIPELINE LOCATE TEST POINT AT THE SOUTH END OF LOCATION THAT WILL NEED TO STAY OPERATIONAL.

GOLDEN EAGLE MINE NW-3-3-95 API# 05-071-06397 – TIMBER CREEK
OGCC OPERATOR NUMBER 10672 – INSPECTION DATE: MAY 07, 2018
CORRECTIVE ACTIONS COMPLETED REGARDING COGCC FIR DOCUMENT # 680102767



PHOTO 3: VIEW OF CUT SLOPE ALONG EAST SIDE OF LOCATION.

GOLDEN EAGLE MINE NW-3-3-95 API# 05-071-06397 – TIMBER CREEK
OGCC OPERATOR NUMBER 10672 – INSPECTION DATE: MAY 07, 2018
CORRECTIVE ACTIONS COMPLETED REGARDING COGCC FIR DOCUMENT # 680102767



PHOTO 4: THE TOP SOIL STOCKPILE WAS SPREAD ACROSS LOCATION DURING THE RECLAMATION ACTIVITIES. THE SIGNAGE WAS REMOVED FROM LOCATION.

GOLDEN EAGLE MINE NW-3-3-95 API# 05-071-06397 – TIMBER CREEK
OGCC OPERATOR NUMBER 10672 – INSPECTION DATE: MAY 08, 2018
CORRECTIVE ACTIONS COMPLETED REGARDING COGCC FIR DOCUMENT # 680102767



PHOTO 5: THE SILT FENCE AT THE BASE OF THE FILL SLOPE HAS BEEN REMOVED.

GOLDEN EAGLE MINE NW-3-3-95 API# 05-071-06397 – TIMBER CREEK
OGCC OPERATOR NUMBER 10672 – INSPECTION DATE: MAY 08, 2018
CORRECTIVE ACTIONS COMPLETED REGARDING COGCC FIR DOCUMENT # 680102767



PHOTO 6: CLOSE UP OF GROUND CONDITIONS ON PAD SURFACE.

GOLDEN EAGLE MINE NW-3-3-95 API# 05-071-06397 – TIMBER CREEK
OGCC OPERATOR NUMBER 10672 – INSPECTION DATE: MAY 08, 2018
CORRECTIVE ACTIONS COMPLETED REGARDING COGCC FIR DOCUMENT # 680102767



PHOTO 7: NORTH OF LOCATION ON THE MAIN ROAD FACING THE PIPELIN R.O.W. RECLAMATION. (3) WATER BARS WERE INSTALLED TO REDUCE RUN OFF VELOCITY. THE EARTH DISTURBANCE WAS STABILIZED BY HYDRO-SEEDING USING AN APPROVED HILL RANCH SEED MIX TO PROMOTE THE ESTABLISHMENT OF VEGETATION.

GOLDEN EAGLE MINE NW-3-3-95 API# 05-071-06397 – TIMBER CREEK
OGCC OPERATOR NUMBER 10672 – INSPECTION DATE: MAY 08, 2018
CORRECTIVE ACTIONS COMPLETED REGARDING COGCC FIR DOCUMENT # 680102767



PHOTO 8: FACING SOUTH ALONG THE ACCESS ROAD RECLAMATION.