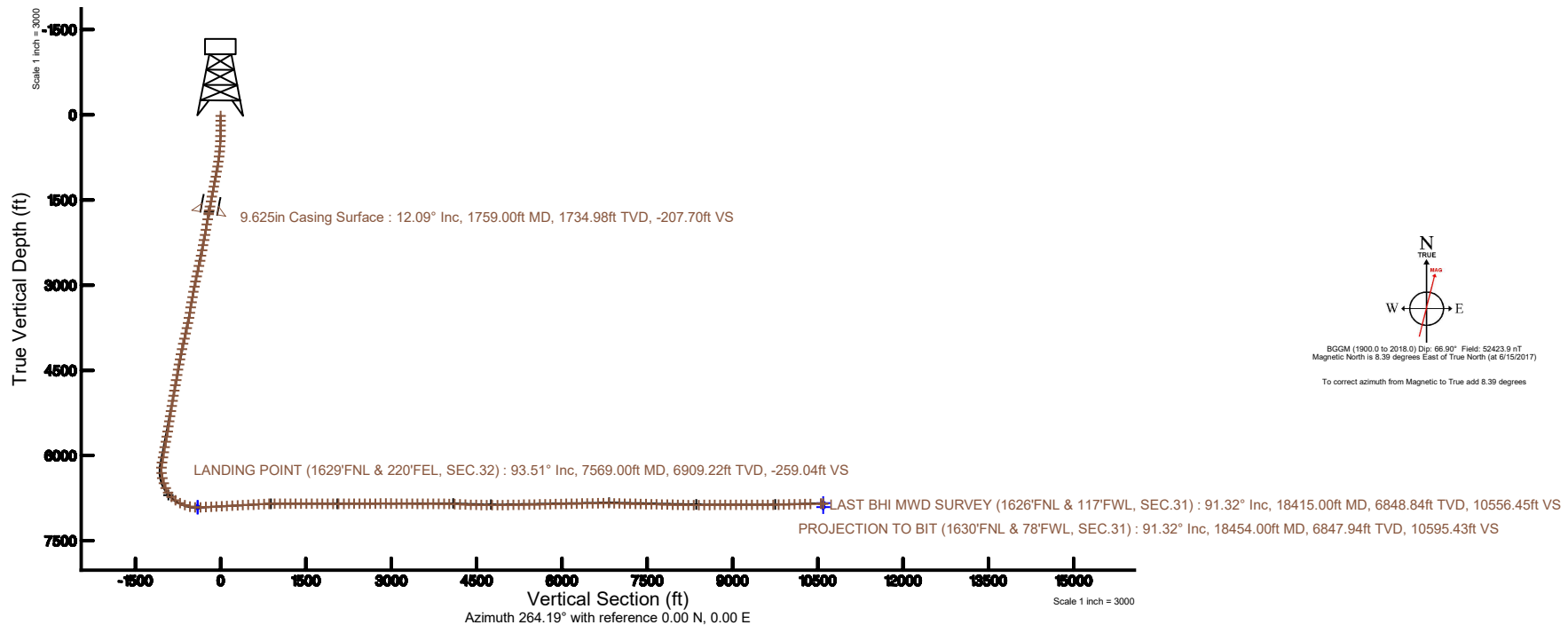
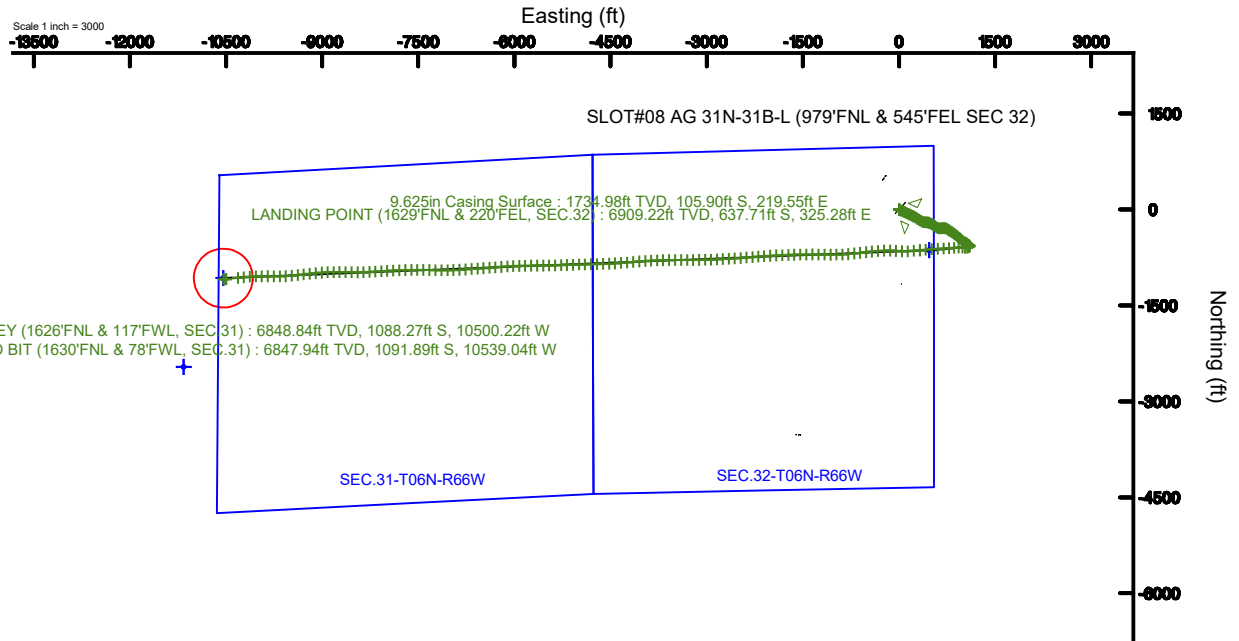


# SRC ENERGY

Location: COLORADO Slot: SLOT#08 AG 31N-31B-L (979'FNL & 545'FEL SEC 32)  
 Field: WELD COUNTY (NAD83, TRUE NORTH) Well: AG 31N-31B-L  
 Facility: SEC.32-T06N-R66W Wellbore: AG 31N-31B-L PWB

Plot reference wellpath is AG 31N-31B-L REV-0.0 PWP	Grid System: NAD83 / Lambert Colorado SP, Northern Zone (501), US feet
True vertical depths are referenced to PRECISION 462 (20') (RKB)	* = Wellpath was transformed from a different geodetic datum
Measured depths are referenced to PRECISION 462 (20') (RKB)	North Reference: True north
PRECISION 462 (20') (RKB) to Mean Sea Level: 4726 feet	Scale: True distance
Mean Sea Level to Mud line (At Slot: SLOT#08 AG 31N-31B-L (979'FNL & 545'FEL SEC 32)): 0 feet	Depths are in feet
Coordinates are in feet referenced to Slot	Created by: doddanna on 2017-12-20
	Database: WellArchitectDB





# Actual Wellpath Report

AG 31N-31B-L AWP

Page 1 of 10



## REFERENCE WELLPATH IDENTIFICATION

Operator	SRC ENERGY	Slot	SLOT#08 AG 31N-31B-L (979'FNL & 545'FEL SEC 32)
Area	COLORADO	Well	AG 31N-31B-L
Field	WELD COUNTY (NAD83, TRUE NORTH)	Wellbore	AG 31N-31B-L AWB
Facility	SEC.32-T06N-R66W		

## REPORT SETUP INFORMATION

Projection System	NAD83 / Lambert Colorado SP, Northern Zone (501), US feet	Software System	WellArchitect® 5.0
North Reference	True	User	Doddanna
Scale	0.999963	Report Generated	12/20/2017 at 12:15:12 PM
Convergence at slot	0.46° East	Database/Source file	WellArchitectDB/AG_31N-31B-L_AWP.xml

## WELLPATH LOCATION

	Local coordinates		Grid coordinates		Geographic coordinates	
	North[ft]	East[ft]	Easting[US ft]	Northing[US ft]	Latitude	Longitude
Slot Location	-102.31	-95.17	3196382.70	1407278.42	40°26'57.250"N	104°47'39.703"W
Facility Reference Pt			3196477.05	1407381.48	40°26'58.261"N	104°47'38.472"W
Field Reference Pt			3171284.48	1426358.81	40°30'07.643"N	104°53'02.634"W

## WELLPATH DATUM

Calculation method	Minimum curvature	PRECISION 462 (20') (RKB) to Facility Vertical Datum	4726.00ft
Horizontal Reference Pt	Slot	PRECISION 462 (20') (RKB) to Mean Sea Level	4726.00ft
Vertical Reference Pt	PRECISION 462 (20') (RKB)	PRECISION 462 (20') (RKB) to Mud Line at Slot (SLOT#08 AG 31N-31B-L (979'FNL & 545'FEL SEC 32))	4726.00ft
MD Reference Pt	PRECISION 462 (20') (RKB)	Section Origin	N 0.00, E 0.00 ft
Field Vertical Reference	Mean Sea Level	Section Azimuth	264.19°



SRC ENERGY

## Actual Wellpath Report

AG 31N-31B-L AWP

Page 2 of 10

**BAKER  
HUGHES****REFERENCE WELLPATH IDENTIFICATION**

Operator	SRC ENERGY	Slot	SLOT#08 AG 31N-31B-L (979'FNL & 545'FEL SEC 32)
Area	COLORADO	Well	AG 31N-31B-L
Field	WELD COUNTY (NAD83,TRUE NORTH)	Wellbore	AG 31N-31B-L AWB
Facility	SEC.32-T06N-R66W		

**WELLPATH DATA (200 stations)** † = interpolated/extrapolated station

MD [ft]	Inclination [°]	Azimuth [°]	TVD [ft]	Vert Sect [ft]	North [ft]	East [ft]	DLS [°/100ft]	Comments
0.00†	0.000	355.780	0.00	0.00	0.00	0.00	0.00	
20.00	0.000	355.780	20.00	0.00	0.00	0.00	0.00	
106.00	0.240	355.780	106.00	-0.01	0.18	-0.01	0.28	
193.00	0.210	17.990	193.00	-0.07	0.51	0.02	0.11	
283.00	0.180	58.880	283.00	-0.27	0.74	0.19	0.15	
375.00	1.620	118.030	374.99	-1.48	0.21	1.47	1.67	
467.00	2.790	115.050	466.92	-4.48	-1.35	4.64	1.28	
557.00	5.060	118.170	556.70	-9.65	-4.15	10.13	2.53	
647.00	7.040	116.930	646.19	-17.58	-8.53	18.54	2.20	
737.00	8.400	120.230	735.38	-27.54	-14.33	29.14	1.59	
827.00	8.700	118.450	824.38	-38.48	-20.89	40.81	0.44	
917.00	11.100	112.950	913.03	-51.70	-27.51	54.77	2.86	
1007.00	12.990	113.380	1001.05	-68.13	-34.90	72.03	2.10	
1097.00	13.170	113.470	1088.71	-85.90	-43.00	90.72	0.20	
1187.00	12.900	116.350	1176.39	-103.35	-51.54	109.13	0.78	
1277.00	13.090	118.480	1264.09	-120.28	-60.86	127.09	0.57	
1367.00	12.210	115.670	1351.90	-136.81	-69.84	144.63	1.19	
1457.00	12.430	115.590	1439.83	-153.20	-78.15	161.94	0.25	
1547.00	12.380	114.230	1527.73	-169.82	-86.29	179.48	0.33	
1637.00	12.230	116.480	1615.66	-186.23	-94.50	196.81	0.56	
1709.00	11.900	116.800	1686.07	-198.93	-101.25	210.26	0.47	
1775.00	12.150	116.310	1750.62	-210.54	-107.40	222.56	0.41	
1868.00	12.490	119.330	1841.48	-227.05	-116.66	240.10	0.78	
1961.00	12.420	122.010	1932.29	-243.18	-126.89	257.35	0.63	
2056.00	12.640	118.730	2025.03	-259.81	-137.30	275.13	0.78	
2148.00	12.640	123.930	2114.81	-275.84	-147.76	292.30	1.24	
2242.00	12.860	123.620	2206.49	-291.83	-159.29	309.55	0.25	
2336.00	12.920	121.770	2298.12	-308.24	-170.61	327.19	0.44	
2429.00	12.980	119.350	2388.76	-325.02	-181.21	345.14	0.59	
2523.00	12.910	114.800	2480.37	-342.68	-190.79	363.87	1.09	



SRC ENERGY

## Actual Wellpath Report

AG 31N-31B-L AWP

Page 3 of 10

**BAKER  
HUGHES****REFERENCE WELLPATH IDENTIFICATION**

Operator	SRC ENERGY	Slot	SLOT#08 AG 31N-31B-L (979'FNL & 545'FEL SEC 32)
Area	COLORADO	Well	AG 31N-31B-L
Field	WELD COUNTY (NAD83, TRUE NORTH)	Wellbore	AG 31N-31B-L AWB
Facility	SEC.32-T06N-R66W		

**WELLPATH DATA (200 stations)**

MD [ft]	Inclination [°]	Azimuth [°]	TVD [ft]	Vert Sect [ft]	North [ft]	East [ft]	DLS [°/100ft]	Comments
2617.00	13.050	106.520	2571.98	-361.54	-198.21	383.58	1.98	
2711.00	12.800	92.270	2663.62	-381.67	-201.64	404.16	3.39	
2804.00	12.570	88.830	2754.35	-401.96	-201.84	424.58	0.85	
2898.00	12.700	98.220	2846.08	-422.18	-203.11	445.03	2.19	
2990.00	12.620	105.460	2935.85	-441.36	-207.24	464.73	1.73	
3083.00	12.650	113.130	3026.61	-459.74	-213.95	483.89	1.80	
3178.00	12.800	116.290	3119.27	-477.76	-222.69	502.89	0.75	
3272.00	12.610	118.710	3210.97	-495.03	-232.23	521.22	0.60	
3366.00	12.810	123.420	3302.67	-511.56	-242.90	538.92	1.12	
3459.00	12.500	130.930	3393.42	-526.44	-255.18	555.13	1.80	
3554.00	12.830	131.680	3486.11	-540.61	-268.93	570.78	0.39	
3648.00	13.040	124.790	3577.73	-555.72	-281.92	587.28	1.65	
3740.00	13.460	107.300	3667.31	-573.45	-291.03	606.04	4.36	
3833.00	13.170	91.230	3757.84	-593.93	-294.47	626.97	3.98	
3928.00	12.970	87.640	3850.39	-615.31	-294.27	648.44	0.88	
4022.00	12.730	85.200	3942.03	-636.20	-292.97	669.30	0.63	
4117.00	12.900	87.420	4034.67	-657.25	-291.61	690.33	0.55	
4210.00	12.880	96.360	4125.33	-677.75	-292.29	711.00	2.14	
4303.00	12.920	110.750	4216.01	-697.19	-297.13	731.03	3.45	
4397.00	12.980	121.800	4307.63	-714.95	-306.41	749.83	2.63	
4489.00	13.080	121.740	4397.26	-731.39	-317.34	767.47	0.11	
4583.00	12.870	121.230	4488.86	-748.18	-328.36	785.46	0.25	
4678.00	12.830	123.730	4581.48	-764.76	-339.70	803.28	0.59	
4773.00	12.810	125.200	4674.12	-780.84	-351.63	820.66	0.34	
4866.00	12.860	125.360	4764.79	-796.41	-363.56	837.53	0.07	
4959.00	12.940	126.250	4855.45	-811.93	-375.71	854.36	0.23	
5052.00	13.580	126.880	4945.97	-827.69	-388.42	871.50	0.71	
5145.00	13.480	130.000	5036.39	-843.27	-401.94	888.53	0.79	
5238.00	13.360	129.170	5126.85	-858.42	-415.69	905.17	0.24	
5330.00	13.420	128.180	5216.35	-873.62	-429.01	921.80	0.26	



# Actual Wellpath Report

AG 31N-31B-L AWP

Page 4 of 10



## REFERENCE WELLPATH IDENTIFICATION

Operator	SRC ENERGY	Slot	SLOT#08 AG 31N-31B-L (979'FNL & 545'FEL SEC 32)
Area	COLORADO	Well	AG 31N-31B-L
Field	WELD COUNTY (NAD83,TRUE NORTH)	Wellbore	AG 31N-31B-L AWB
Facility	SEC.32-T06N-R66W		

## WELLPATH DATA (200 stations)

MD [ft]	Inclination [°]	Azimuth [°]	TVD [ft]	Vert Sect [ft]	North [ft]	East [ft]	DLS [°/100ft]	Comments
5423.00	13.460	129.900	5306.80	-888.95	-442.62	938.59	0.43	
5516.00	13.470	133.210	5397.24	-903.61	-456.98	954.78	0.83	
5609.00	13.400	136.610	5487.70	-917.28	-472.23	970.08	0.85	
5702.00	13.120	130.940	5578.22	-931.09	-486.97	985.46	1.43	
5795.00	13.240	123.860	5668.78	-946.52	-499.82	1002.28	1.74	
5889.00	13.220	115.000	5760.30	-964.04	-510.37	1020.96	2.16	
5982.00	13.270	117.390	5850.82	-982.10	-519.77	1040.07	0.59	
6076.00	13.210	125.580	5942.33	-999.19	-530.98	1058.39	1.99	
6169.00	13.220	128.510	6032.87	-1014.77	-543.79	1075.35	0.72	
6262.00	13.240	123.350	6123.41	-1030.63	-556.26	1092.57	1.27	
6355.00	7.390	156.920	6214.94	-1040.68	-567.64	1103.83	8.77	
6448.00	6.580	215.900	6307.36	-1038.91	-577.47	1103.05	7.42	
6541.00	15.500	225.940	6398.55	-1025.58	-590.46	1090.97	9.78	
6635.00	20.120	263.360	6488.31	-999.45	-601.10	1065.79	12.86	
6728.00	22.690	278.820	6574.95	-966.07	-600.20	1032.15	6.64	
6820.00	34.280	272.070	6655.70	-923.08	-596.53	988.56	13.06	
6913.00	44.140	268.270	6727.68	-864.68	-596.56	929.87	10.91	
7007.00	52.900	266.800	6789.88	-794.45	-599.65	859.58	9.39	
7100.00	63.600	266.370	6838.75	-715.55	-604.37	780.76	11.51	
7193.00	70.610	266.940	6874.91	-630.01	-609.35	695.28	7.56	
7287.00	77.780	266.230	6900.49	-539.70	-614.75	605.06	7.66	
7380.00	85.660	265.130	6913.88	-447.78	-621.68	513.36	8.55	
7475.00	93.260	265.350	6914.77	-352.87	-629.56	418.76	8.00	
7569.00	93.510	264.680	6909.22	-259.04	-637.71	325.28	0.76	LANDING POINT (1629'FNL & 220'FEL, SEC.32)
7662.00	92.860	264.370	6904.06	-166.19	-646.57	232.85	0.77	
7756.00	92.960	266.830	6899.28	-72.34	-653.77	139.25	2.62	
7850.00	92.860	273.220	6894.51	21.00	-653.73	45.42	6.79	
7942.00	93.020	274.280	6889.79	111.60	-647.72	-46.26	1.16	
8036.00	93.050	271.600	6884.81	204.37	-642.91	-139.99	2.85	
8131.00	92.960	268.030	6879.83	298.77	-643.22	-234.85	3.75	



SRC ENERGY

## Actual Wellpath Report

AG 31N-31B-L AWP

Page 5 of 10

**BAKER  
HUGHES**

## REFERENCE WELLPATH IDENTIFICATION

Operator	SRC ENERGY	Slot	SLOT#08 AG 31N-31B-L (979'FNL & 545'FEL SEC 32)
Area	COLORADO	Well	AG 31N-31B-L
Field	WELD COUNTY (NAD83, TRUE NORTH)	Wellbore	AG 31N-31B-L AWB
Facility	SEC.32-T06N-R66W		

## WELLPATH DATA (200 stations)

MD [ft]	Inclination [°]	Azimuth [°]	TVD [ft]	Vert Sect [ft]	North [ft]	East [ft]	DLS [°/100ft]	Comments
8224.00	93.020	265.100	6874.97	391.55	-648.78	-327.54	3.15	
8318.00	92.800	263.890	6870.20	485.42	-657.79	-420.99	1.31	
8410.00	93.050	263.340	6865.51	577.30	-668.00	-512.30	0.66	
8504.00	93.020	263.740	6860.53	671.16	-678.57	-605.57	0.43	
8596.00	92.960	263.920	6855.73	763.03	-688.44	-696.91	0.21	
8689.00	92.990	264.790	6850.90	855.91	-697.58	-789.33	0.93	
8782.00	90.710	267.530	6847.90	948.79	-703.80	-882.06	3.83	
8875.00	89.820	268.770	6847.47	1041.56	-706.80	-975.01	1.64	
8968.00	89.720	269.930	6847.85	1134.18	-707.85	-1068.00	1.25	
9062.00	89.880	271.070	6848.17	1227.61	-707.03	-1162.00	1.22	
9156.00	89.780	271.480	6848.45	1320.89	-704.94	-1255.97	0.45	
9251.00	89.880	270.120	6848.73	1415.26	-703.62	-1350.96	1.44	
9346.00	89.750	269.130	6849.04	1509.83	-704.24	-1445.96	1.05	
9440.00	89.780	268.970	6849.43	1603.49	-705.80	-1539.94	0.17	
9534.00	89.630	268.440	6849.91	1697.20	-707.92	-1633.92	0.59	
9627.00	89.660	268.030	6850.49	1789.96	-710.79	-1726.87	0.44	
9721.00	89.720	267.600	6851.00	1883.77	-714.37	-1820.80	0.46	
9816.00	89.750	267.120	6851.43	1978.63	-718.75	-1915.70	0.51	
9910.00	90.490	266.780	6851.24	2072.52	-723.75	-2009.56	0.87	
10003.00	90.460	266.240	6850.47	2165.44	-729.41	-2102.39	0.58	
10095.00	90.340	265.320	6849.82	2257.40	-736.18	-2194.14	1.01	
10187.00	90.340	264.990	6849.28	2349.38	-743.95	-2285.81	0.36	
10280.00	90.310	265.400	6848.75	2442.37	-751.74	-2378.48	0.44	
10372.00	90.400	265.610	6848.18	2534.34	-758.95	-2470.19	0.25	
10465.00	90.400	266.100	6847.53	2627.30	-765.67	-2562.95	0.53	
10557.00	90.490	266.390	6846.82	2719.24	-771.69	-2654.75	0.33	
10650.00	90.680	266.590	6845.87	2812.16	-777.39	-2747.57	0.30	
10743.00	89.630	267.560	6845.62	2905.04	-782.13	-2840.44	1.54	
10835.00	89.660	268.500	6846.19	2996.83	-785.30	-2932.39	1.02	
10928.00	89.630	269.370	6846.76	3089.51	-787.02	-3025.37	0.94	



SRC ENERGY

## Actual Wellpath Report

AG 31N-31B-L AWP

Page 6 of 10

**BAKER  
HUGHES****REFERENCE WELLPATH IDENTIFICATION**

Operator	SRC ENERGY	Slot	SLOT#08 AG 31N-31B-L (979'FNL & 545'FEL SEC 32)
Area	COLORADO	Well	AG 31N-31B-L
Field	WELD COUNTY (NAD83, TRUE NORTH)	Wellbore	AG 31N-31B-L AWB
Facility	SEC.32-T06N-R66W		

**WELLPATH DATA (200 stations)**

MD [ft]	Inclination [°]	Azimuth [°]	TVD [ft]	Vert Sect [ft]	North [ft]	East [ft]	DLS [°/100ft]	Comments
11021.00	89.230	269.480	6847.69	3182.11	-787.96	-3118.36	0.45	
11115.00	89.260	269.300	6848.93	3275.72	-788.96	-3212.34	0.19	
11208.00	89.260	269.480	6850.13	3368.33	-789.95	-3305.33	0.19	
11301.00	89.170	269.500	6851.40	3460.92	-790.78	-3398.32	0.10	
11395.00	90.520	269.740	6851.66	3554.50	-791.40	-3492.31	1.46	
11488.00	90.430	269.450	6850.88	3647.08	-792.06	-3585.31	0.33	
11583.00	89.630	268.740	6850.84	3741.73	-793.56	-3680.29	1.13	
11676.00	89.880	268.120	6851.23	3834.47	-796.11	-3773.26	0.72	
11769.00	89.780	266.540	6851.51	3927.33	-800.44	-3866.15	1.70	
11862.00	89.290	265.770	6852.26	4020.27	-806.67	-3958.94	0.98	
11957.00	87.010	265.680	6855.33	4115.18	-813.75	-4053.62	2.40	
12050.00	86.890	265.190	6860.28	4208.03	-821.14	-4146.19	0.54	
12145.00	87.910	265.060	6864.59	4302.92	-829.21	-4240.75	1.08	
12240.00	88.890	265.560	6867.24	4397.86	-836.97	-4335.39	1.16	
12334.00	88.710	266.240	6869.21	4491.80	-843.69	-4429.13	0.75	
12427.00	88.680	267.460	6871.33	4584.67	-848.80	-4521.97	1.31	
12521.00	88.740	268.390	6873.44	4678.45	-852.20	-4615.88	0.99	
12616.00	91.020	269.300	6873.64	4773.12	-854.12	-4710.85	2.58	
12710.00	89.690	268.340	6873.06	4866.81	-856.05	-4804.83	1.74	
12804.00	90.990	267.770	6872.50	4960.59	-859.24	-4898.77	1.51	
12898.00	90.830	268.460	6871.01	5054.36	-862.33	-4992.71	0.75	
12991.00	91.020	268.100	6869.51	5147.11	-865.13	-5085.65	0.44	
13085.00	90.950	268.440	6867.89	5240.86	-867.96	-5179.60	0.37	
13178.00	91.020	267.780	6866.29	5333.63	-871.03	-5272.53	0.71	
13272.00	90.800	268.300	6864.80	5427.40	-874.24	-5366.46	0.60	
13364.00	91.110	268.400	6863.27	5519.15	-876.89	-5458.41	0.35	
13457.00	91.320	270.180	6861.29	5611.76	-878.05	-5551.38	1.93	
13551.00	91.270	270.200	6859.17	5705.22	-877.73	-5645.36	0.06	
13644.00	91.200	269.100	6857.17	5797.77	-878.30	-5738.33	1.18	
13738.00	91.350	268.760	6855.07	5891.43	-880.06	-5832.29	0.40	



SRC ENERGY

## Actual Wellpath Report

AG 31N-31B-L AWP

Page 7 of 10

**BAKER  
HUGHES****REFERENCE WELLPATH IDENTIFICATION**

Operator	SRC ENERGY	Slot	SLOT#08 AG 31N-31B-L (979'FNL & 545'FEL SEC 32)
Area	COLORADO	Well	AG 31N-31B-L
Field	WELD COUNTY (NAD83, TRUE NORTH)	Wellbore	AG 31N-31B-L AWB
Facility	SEC.32-T06N-R66W		

**WELLPATH DATA (200 stations)**

MD [ft]	Inclination [°]	Azimuth [°]	TVD [ft]	Vert Sect [ft]	North [ft]	East [ft]	DLS [°/100ft]	Comments
13832.00	91.290	267.750	6852.91	5985.16	-882.92	-5926.22	1.08	
13924.00	91.170	267.020	6850.93	6077.00	-887.11	-6018.10	0.80	
14017.00	91.110	266.640	6849.08	6169.88	-892.26	-6110.94	0.41	
14110.00	91.110	266.180	6847.28	6262.79	-898.08	-6203.74	0.49	
14203.00	91.020	265.620	6845.55	6355.74	-904.73	-6296.49	0.61	
14295.00	90.990	265.920	6843.94	6447.69	-911.51	-6388.22	0.33	
14390.00	90.830	265.400	6842.43	6542.64	-918.70	-6482.94	0.57	
14483.00	90.950	266.020	6840.99	6635.60	-925.66	-6575.67	0.68	
14577.00	90.920	266.260	6839.45	6729.53	-931.98	-6669.44	0.26	
14671.00	88.770	266.520	6839.71	6823.46	-937.90	-6763.25	2.30	
14766.00	88.490	266.530	6841.98	6918.35	-943.66	-6858.05	0.29	
14860.00	88.490	267.340	6844.46	7012.21	-948.68	-6951.88	0.86	
14953.00	88.520	269.780	6846.88	7104.90	-951.02	-7044.81	2.62	
15047.00	88.710	270.390	6849.15	7198.37	-950.88	-7138.78	0.68	
15142.00	88.460	270.920	6851.50	7292.74	-949.79	-7233.75	0.62	
15236.00	88.800	271.630	6853.75	7385.99	-947.70	-7327.70	0.84	
15330.00	88.770	270.850	6855.74	7479.26	-945.67	-7421.65	0.83	
15424.00	88.740	269.090	6857.78	7572.76	-945.72	-7515.63	1.87	
15517.00	88.620	268.890	6859.93	7665.41	-947.36	-7608.59	0.25	
15611.00	88.830	269.320	6862.02	7759.04	-948.82	-7702.55	0.51	
15706.00	88.740	268.050	6864.03	7853.72	-951.00	-7797.50	1.34	
15800.00	88.520	267.140	6866.28	7947.53	-954.95	-7891.39	1.00	
15893.00	88.550	266.740	6868.66	8040.39	-959.91	-7984.23	0.43	
15986.00	88.830	266.640	6870.78	8133.28	-965.28	-8077.05	0.32	
16078.00	88.550	265.790	6872.89	8225.20	-971.35	-8168.83	0.97	
16170.00	90.520	267.120	6873.63	8317.11	-977.04	-8260.64	2.58	
16263.00	90.740	267.700	6872.61	8409.96	-981.24	-8353.54	0.67	
16357.00	90.520	270.550	6871.58	8503.60	-982.68	-8447.51	3.04	
16450.00	90.740	271.530	6870.55	8595.93	-980.99	-8540.49	1.08	
16543.00	90.680	270.690	6869.40	8688.24	-979.19	-8633.46	0.91	





# Actual Wellpath Report

AG 31N-31B-L AWP

Page 8 of 10



## REFERENCE WELLPATH IDENTIFICATION

Operator	SRC ENERGY	Slot	SLOT#08 AG 31N-31B-L (979'FNL & 545'FEL SEC 32)
Area	COLORADO	Well	AG 31N-31B-L
Field	WELD COUNTY (NAD83,TRUE NORTH)	Wellbore	AG 31N-31B-L AWB
Facility	SEC.32-T06N-R66W		

## WELLPATH DATA (200 stations)

MD [ft]	Inclination [°]	Azimuth [°]	TVD [ft]	Vert Sect [ft]	North [ft]	East [ft]	DLS [°/100ft]	Comments
16638.00	90.620	270.220	6868.32	8782.67	-978.43	-8728.46	0.50	
16730.00	89.970	269.100	6867.85	8874.24	-978.98	-8820.45	1.41	
16823.00	90.030	267.310	6867.85	8967.01	-981.89	-8913.40	1.93	
16916.00	89.910	265.010	6867.90	9059.95	-988.12	-9006.19	2.48	
17010.00	90.000	264.830	6867.97	9153.94	-996.44	-9099.82	0.21	
17104.00	89.850	265.020	6868.10	9247.94	-1004.76	-9193.45	0.26	
17199.00	90.000	263.050	6868.22	9342.93	-1014.63	-9287.93	2.08	
17292.00	89.910	264.430	6868.29	9435.92	-1024.77	-9380.37	1.49	
17387.00	89.820	263.700	6868.52	9530.92	-1034.59	-9474.86	0.77	
17480.00	89.910	266.120	6868.74	9623.91	-1042.84	-9567.49	2.60	
17574.00	91.350	270.350	6867.70	9717.65	-1045.74	-9661.41	4.75	
17668.00	91.200	271.260	6865.61	9811.00	-1044.42	-9755.38	0.98	
17760.00	91.320	270.050	6863.59	9902.39	-1043.37	-9847.35	1.32	
17854.00	91.260	268.860	6861.47	9995.96	-1044.26	-9941.32	1.27	
17948.00	91.350	267.810	6859.33	10089.69	-1046.99	-10035.26	1.12	
18042.00	91.140	266.080	6857.29	10183.56	-1052.00	-10129.10	1.85	
18135.00	91.320	263.710	6855.29	10276.52	-1060.27	-10221.70	2.56	
18229.00	91.320	264.170	6853.13	10370.50	-1070.19	-10315.15	0.49	
18415.00	91.320	264.670	6848.84	10556.45	-1088.27	-10500.22	0.27	LAST BHI MWD SURVEY (1626'FNL & 117'FWL, SEC.31)
18454.00	91.320	264.670	6847.94	10595.43	-1091.89	-10539.04	0.00	PROJECTION TO BIT (1630'FNL & 78'FWL, SEC.31)

## HOLE & CASING SECTIONS - Ref Wellbore: AG 31N-31B-L AWB Ref Wellpath: AG 31N-31B-L AWP

String/Diameter	Start MD [ft]	End MD [ft]	Interval [ft]	Start TVD [ft]	End TVD [ft]	Start N/S [ft]	Start E/W [ft]	End N/S [ft]	End E/W [ft]
13.5in Open Hole	20.00	1759.00	1739.00	20.00	1734.98	0.00	0.00	-105.90	219.55
9.625in Casing Surface	20.00	1759.00	1739.00	20.00	1734.98	0.00	0.00	-105.90	219.55
8.5in Open Hole	1759.00	18454.00	16695.00	1734.98	6847.94	-105.90	219.55	-1091.89	-10539.04



# Actual Wellpath Report

AG 31N-31B-L AWP

Page 9 of 10



## REFERENCE WELLPATH IDENTIFICATION

Operator	SRC ENERGY	Slot	SLOT#08 AG 31N-31B-L (979'FNL & 545'FEL SEC 32)
Area	COLORADO	Well	AG 31N-31B-L
Field	WELD COUNTY (NAD83, TRUE NORTH)	Wellbore	AG 31N-31B-L AWB
Facility	SEC.32-T06N-R66W		

## TARGETS

Name	TVD [ft]	North [ft]	East [ft]	Grid East [US ft]	Grid North [US ft]	Latitude	Longitude	Shape
SEC.31-T06N-R66W	-18.00	-2461.36	-11160.85	3185242.22	1404728.43	40°26'32.903"N	104°50'04.052"W	polygon
SEC.32-T06N-R66W	-18.00	-2461.36	-11160.85	3185242.22	1404728.43	40°26'32.903"N	104°50'04.052"W	polygon
AG 31N-31B-L BHL REV-2 (1611'FNL & 75'FWL, SEC.31)	6840.04	-1072.88	-10541.79	3185850.19	1406121.73	40°26'46.626"N	104°49'56.053"W	point
AG 31N-31B-L BHL REV-1 ON PLAT (NIO-B, 1611'FNL & 75'FWL SEC 31)	6906.00	-1072.88	-10541.79	3185850.19	1406121.73	40°26'46.626"N	104°49'56.053"W	circle
AG 31N-31B-L TOP OF PROD (1627'FNL & 75'FEL SEC 32)	6906.00	-635.73	469.83	3196857.56	1406646.48	40°26'50.968"N	104°47'33.626"W	circle
AG 31N-31B-L TOP OF PROD REV-2 (1627'FNL & 75'FEL, SEC.32)	6917.11	-635.73	469.83	3196857.56	1406646.48	40°26'50.968"N	104°47'33.626"W	point

## WELLPATH COMPOSITION - Ref Wellbore: AG 31N-31B-L AWB Ref Wellpath: AG 31N-31B-L AWP

Start MD [ft]	End MD [ft]	Positional Uncertainty Model	Log Name/Comment	Wellbore
20.00	1709.00	Custom BHI NaviTrak (Standard Rotating+Axial Corr) (Rockies 0.03Gt model)	BHI NAVITRAK W/APS EM 13.5" (STD ROTATING, AXIAL, ROCKIES GT)<106-1709>	AG 31N-31B-L AWB
1709.00	18415.00	Custom BHI AutoTrak Curve (IFR1, Short) (Rockies 0.03Gt model)	Custom BHI AutoTrak Curve (IFR1, Short) (Rockies 0.03Gt model) <1775-18415>	AG 31N-31B-L AWB
18415.00	18454.00	Blind Drilling (std)	Projection to bit	AG 31N-31B-L AWB



# Actual Wellpath Report

AG 31N-31B-L AWP

Page 10 of 10



REFERENCE WELLPATH IDENTIFICATION			
Operator	SRC ENERGY	Slot	SLOT#08 AG 31N-31B-L (979'FNL & 545'FEL SEC 32)
Area	COLORADO	Well	AG 31N-31B-L
Field	WELD COUNTY (NAD83,TRUE NORTH)	Wellbore	AG 31N-31B-L AWB
Facility	SEC.32-T06N-R66W		

WELLPATH COMMENTS				
MD [ft]	Inclination [°]	Azimuth [°]	TVD [ft]	Comment
7569.00	93.510	264.680	6909.22	LANDING POINT (1629'FNL & 220'FEL, SEC.32)
18415.00	91.320	264.670	6848.84	LAST BHI MWD SURVEY (1626'FNL & 117'FWL, SEC.31)
18454.00	91.320	264.670	6847.94	PROJECTION TO BIT (1630'FNL & 78'FWL, SEC.31)