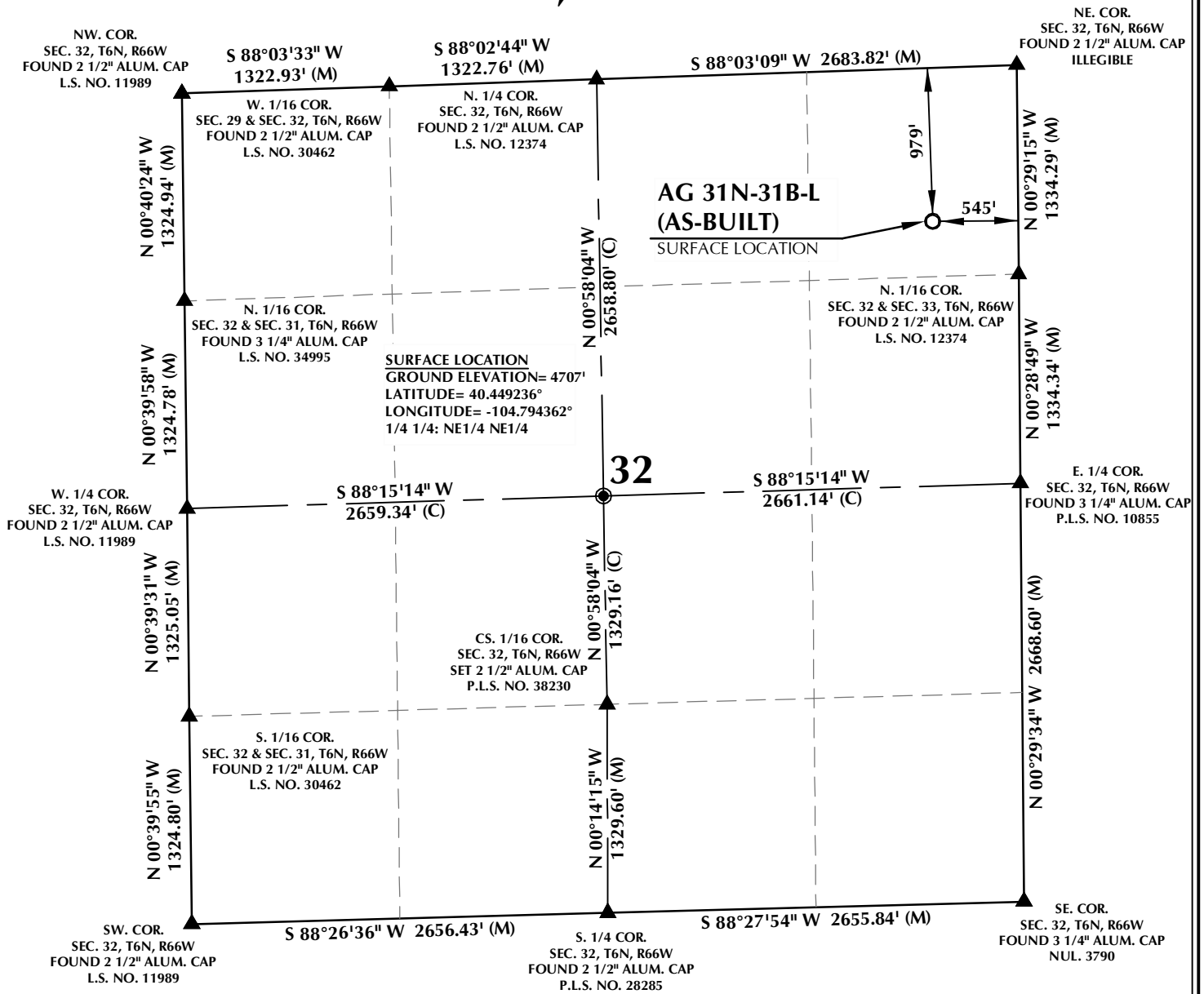


# T6N, R66W

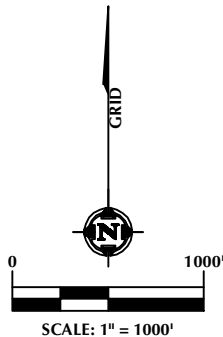


## CERTIFICATE OF SURVEYOR:

THIS IS TO CERTIFY THAT THE ABOVE PLAT WAS PREPARED FROM FIELD NOTES OF ACTUAL SURVEY MADE BY ME OR UNDER MY SUPERVISION AND THAT THE SAME ARE TRUE AND CORRECT TO THE BEST OF MY KNOWLEDGE AND BELIEF. THIS CERTIFICATE DOES NOT REPRESENT A LAND SURVEY PLAT OR IMPROVEMENT SURVEY PLAT AS DEFINED BY C.R.S. 38-50-102 AND CANNOT BE RELIED UPON TO DETERMINE OWNERSHIP.

*John R. Slaugh*  
JOHN R. SLAUGH  
PROFESSIONAL LAND SURVEYOR  
COLORADO REGISTRATION NUMBER 38230

**NOTICE:**  
ACCORDING TO COLORADO STATE LAW YOU MUST COMMENCE ANY LEGAL ACTION BASED UPON ANY DEFECT IN THIS SURVEY WITHIN THREE YEARS AFTER YOU FIRST DISCOVER SUCH DEFECT. IN NO EVENT MAY ANY ACTION BASED UPON ANY DEFECT IN THIS SURVEY BE COMMENCED MORE THAN TEN YEARS FROM THE DATE ON THE CERTIFICATION SHOWN HEREON.



## NOTES:

1. ▲ INDICATES SECTION CORNER
2. ● INDICATES CALCULATED CORNER
3. DRAWING LATITUDE AND LONGITUDE COORDINATES ARE NAD 83 (2011)(EPOCH:2010)
4. ELEVATION BASED ON NAVD88 (GEOID12B)
5. BASIS OF BEARING DERIVED FROM COLORADO COORDINATE SYSTEM OF 1983 NORTH ZONE.
6. ALL MEASURED DISTANCES ARE GRID. COMBINED SCALE FACTOR: .99974032 CALCULATED FROM THE N. 1/4 CORNER OF SECTION 32, T6N, R66W
7. OPERATOR: TRAVIS HOLLAND / PDOP = 1.2
8. SEE ADDENDUM TO WELL LOCATION CERTIFICATE FOR EXISTING IMPROVEMENTS WITHIN 500' OF THE WELL PAD.
9. WELL FOOTAGES ARE MEASURED AT RIGHT ANGLES TO THE SECTION LINES.

## WELL PAD - AG 26-32

**AG 31N-31B-L (AS-BUILT)**  
**WELL LOCATION CERTIFICATE**  
**979' FNL & 545' FEL NENE (SURFACE)**  
**LOCATED IN SECTION 32**  
**T6N, R66W, 6TH P.M.**  
**WELD COUNTY, COLORADO**



**SRC ENERGY**  
1675 Broadway, Suite 2600  
Denver, Colorado 80202



## CONSULTING, LLC

**SHERIDAN OFFICE**  
1095 Saberton Avenue  
Sheridan, Wyoming 82801  
Phone 307-674-0609

**LOVELAND OFFICE**  
1635 Foxtrail Drive, Suite 204  
Loveland, Colorado 80538  
Phone 970-776-4331

|               |         |                |        |
|---------------|---------|----------------|--------|
| DRAFTED BY:   | GLK     | CHECKED BY:    | JRS    |
| DATE DRAFTED: | 7/18/17 | DATE SURVEYED: | 7/6/17 |
| REVISED:      |         | FILE NAME:     | 16-76  |