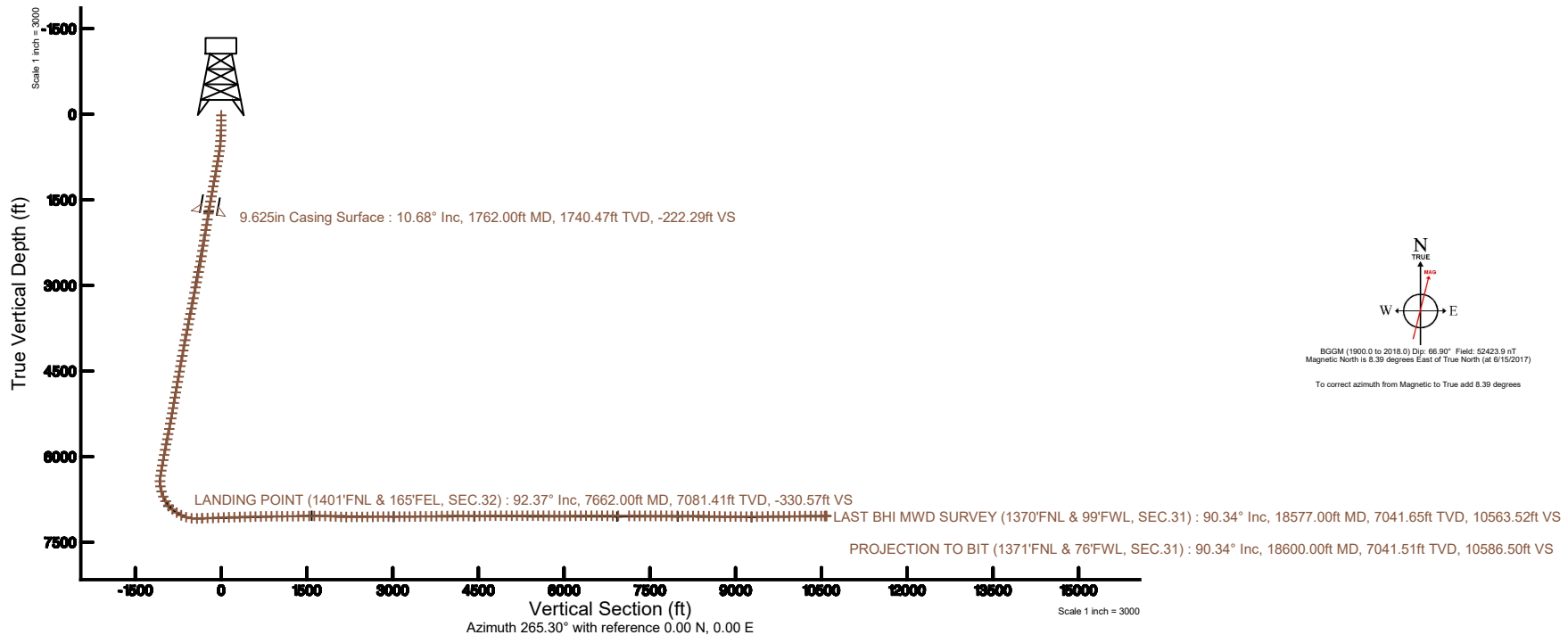
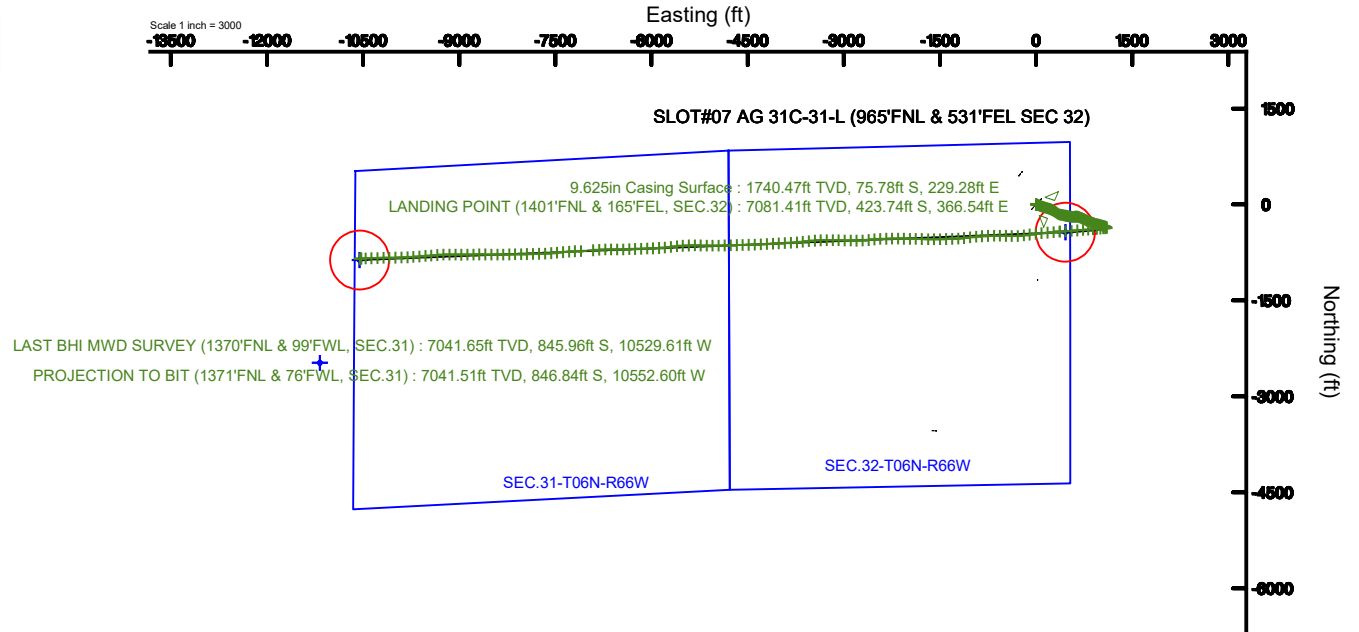


SRC ENERGY

Location: COLORADO Slot: SLOT#07 AG 31C-31-L (965'FNL & 531'FEL SEC 32)
 Field: WELD COUNTY (NAD83,TRUE NORTH) Well: AG 31C-31-L
 Facility: SEC.32-T06N-R66W Wellbore: AG 31C-31-L PWB

Plot reference wellpath is AG 31C-31-L, REV-D.0 PWP	Grid System: NAD83 / Lambert Colorado SP, Northern Zone (501), US feet
True vertical depths are referenced to PRECISION 462 (20') (RKB)	* = Wellpath was transformed from a different geodetic datum
Measured depths are referenced to PRECISION 462 (20') (RKB)	North Reference: True north
PRECISION 462 (20') (RKB) to Mean Sea Level: 4726 feet	Scale: True distance
Mean Sea Level to Mud line (At Slot: SLOT#07 AG 31C-31-L (965'FNL & 531'FEL SEC 32)): 0 feet	Depths are in feet
Coordinates are in feet referenced to Slot	Created by: doddanna on 2017-12-01
	Database: WellArchitectDB





Actual Wellpath Report

AG 31C-31-L AWP

Page 1 of 10



REFERENCE WELLPATH IDENTIFICATION

Operator	SRC ENERGY	Slot	SLOT#07 AG 31C-31-L (965'FNL & 531'FEL SEC 32)
Area	COLORADO	Well	AG 31C-31-L
Field	WELD COUNTY (NAD83,TRUE NORTH)	Wellbore	AG 31C-31-L AWP
Facility	SEC.32-T06N-R66W		

REPORT SETUP INFORMATION

Projection System	NAD83 / Lambert Colorado SP, Northern Zone (501), US feet	Software System	WellArchitect® 5.0
North Reference	True	User	Doddanna
Scale	0.999963	Report Generated	12/1/2017 at 11:51:35 AM
Convergence at slot	0.46° East	Database/Source file	WellArchitectDB/AG_31C-31-L_AWP.xml

WELLPATH LOCATION

	Local coordinates		Grid coordinates		Geographic coordinates	
	North[ft]	East[ft]	Easting[US ft]	Northing[US ft]	Latitude	Longitude
Slot Location	-87.74	-81.56	3196396.19	1407293.10	40°26'57.394"N	104°47'39.527"W
Facility Reference Pt			3196477.05	1407381.48	40°26'58.261"N	104°47'38.472"W
Field Reference Pt			3171284.48	1426358.81	40°30'07.643"N	104°53'02.634"W

WELLPATH DATUM

Calculation method	Minimum curvature	PRECISION 462 (20') (RKB) to Facility Vertical Datum	4726.00ft
Horizontal Reference Pt	Slot	PRECISION 462 (20') (RKB) to Mean Sea Level	4726.00ft
Vertical Reference Pt	PRECISION 462 (20') (RKB)	PRECISION 462 (20') (RKB) to Mud Line at Slot (SLOT#07 AG 31C-31-L (965'FNL & 531'FEL SEC 32))	4726.00ft
MD Reference Pt	PRECISION 462 (20') (RKB)	Section Origin	N 0.00, E 0.00 ft
Field Vertical Reference	Mean Sea Level	Section Azimuth	265.30°



SRC ENERGY

Actual Wellpath Report

AG 31C-31-L AWP

Page 2 of 10

BAKER
HUGHES

REFERENCE WELLPATH IDENTIFICATION

Operator	SRC ENERGY	Slot	SLOT#07 AG 31C-31-L (965'FNL & 531'FEL SEC 32)
Area	COLORADO	Well	AG 31C-31-L
Field	WELD COUNTY (NAD83, TRUE NORTH)	Wellbore	AG 31C-31-L AWB
Facility	SEC.32-T06N-R66W		

WELLPATH DATA (201 stations) † = interpolated/extrapolated station

MD [ft]	Inclination [°]	Azimuth [°]	TVD [ft]	Vert Sect [ft]	North [ft]	East [ft]	DLS [°/100ft]	Comments
0.00†	0.000	331.070	0.00	0.00	0.00	0.00	0.00	
20.00	0.000	331.070	20.00	0.00	0.00	0.00	0.00	
106.00	0.296	331.070	106.00	0.09	0.19	-0.11	0.34	
193.00	0.140	175.840	193.00	0.18	0.29	-0.21	0.49	
283.00	1.580	96.810	282.99	-1.03	0.03	1.03	1.73	
375.00	2.760	98.000	374.92	-4.43	-0.43	4.48	1.28	
467.00	4.880	105.770	466.71	-10.26	-1.80	10.44	2.37	
557.00	6.710	109.430	556.25	-18.65	-4.59	19.09	2.07	
647.00	9.000	110.710	645.40	-29.81	-8.83	30.63	2.55	
737.00	10.340	110.510	734.12	-43.47	-14.15	44.78	1.49	
827.00	10.430	110.050	822.64	-58.18	-19.77	60.00	0.14	
917.00	10.850	110.000	911.09	-73.27	-25.46	75.61	0.47	
1007.00	11.320	107.540	999.42	-89.14	-31.02	92.00	0.74	
1097.00	11.160	107.240	1087.69	-105.40	-36.27	108.74	0.19	
1187.00	11.230	106.560	1175.98	-121.64	-41.35	125.46	0.17	
1277.00	11.170	107.450	1264.26	-137.88	-46.46	142.17	0.20	
1367.00	11.280	107.680	1352.54	-154.10	-51.74	158.87	0.13	
1457.00	11.220	108.460	1440.81	-170.29	-57.19	175.57	0.18	
1547.00	10.840	108.480	1529.15	-186.12	-62.65	191.90	0.42	
1637.00	10.600	108.710	1617.58	-201.49	-67.98	207.77	0.27	
1712.00	10.470	109.550	1691.31	-214.04	-72.48	220.72	0.27	
1870.00	11.230	118.830	1846.50	-239.95	-84.70	247.73	1.20	
1962.00	11.000	117.940	1936.77	-254.81	-93.13	263.33	0.31	
2057.00	11.100	117.160	2030.01	-270.21	-101.55	279.48	0.19	
2150.00	11.170	123.230	2121.27	-284.92	-110.58	294.98	1.26	
2243.00	11.200	126.310	2212.50	-298.84	-120.86	309.79	0.64	
2337.00	11.470	127.990	2304.67	-312.60	-132.02	324.51	0.45	
2430.00	11.510	123.330	2395.81	-326.70	-142.81	339.55	1.00	
2523.00	11.510	114.420	2486.94	-342.12	-151.75	355.75	1.91	
2618.00	11.220	104.120	2580.09	-359.15	-157.92	373.35	2.16	



SRC ENERGY

Actual Wellpath Report

AG 31C-31-L AWP

Page 3 of 10

**BAKER
HUGHES**

REFERENCE WELLPATH IDENTIFICATION

Operator	SRC ENERGY	Slot	SLOT#07 AG 31C-31-L (965'FNL & 531'FEL SEC 32)
Area	COLORADO	Well	AG 31C-31-L
Field	WELD COUNTY (NAD83, TRUE NORTH)	Wellbore	AG 31C-31-L AWB
Facility	SEC.32-T06N-R66W		

WELLPATH DATA (201 stations)

MD [ft]	Inclination [°]	Azimuth [°]	TVD [ft]	Vert Sect [ft]	North [ft]	East [ft]	DLS [°/100ft]	Comments
2712.00	11.460	95.420	2672.26	-377.00	-161.03	391.52	1.84	
2806.00	11.390	99.000	2764.40	-395.21	-163.37	409.98	0.76	
2899.00	11.380	104.610	2855.57	-412.79	-167.12	427.93	1.19	
2991.00	11.300	101.240	2945.78	-430.02	-171.16	445.55	0.73	
3084.00	11.570	105.780	3036.93	-447.52	-175.48	463.46	1.01	
3178.00	11.510	104.500	3129.03	-465.21	-180.39	481.62	0.28	
3274.00	11.220	100.550	3223.15	-483.26	-184.50	500.07	0.87	
3367.00	11.500	98.860	3314.33	-501.00	-187.58	518.13	0.47	
3461.00	11.280	98.210	3406.48	-519.07	-190.34	536.48	0.27	
3554.00	11.500	97.550	3497.65	-537.00	-192.85	554.68	0.27	
3648.00	11.610	92.040	3589.74	-555.55	-194.42	573.42	1.18	
3741.00	11.600	81.730	3680.85	-574.18	-193.41	592.03	2.23	
3835.00	11.500	82.440	3772.95	-592.97	-190.82	610.67	0.18	
3929.00	11.580	89.960	3865.06	-611.73	-189.58	629.39	1.60	
4024.00	11.210	97.710	3958.19	-630.25	-190.81	648.08	1.66	
4118.00	10.730	108.660	4050.48	-647.21	-194.84	665.43	2.27	
4211.00	11.360	114.020	4141.76	-663.19	-201.34	681.99	1.29	
4305.00	10.940	113.150	4233.99	-679.20	-208.61	698.65	0.48	
4398.00	11.090	112.530	4325.27	-694.95	-215.51	715.03	0.21	
4491.00	11.640	110.970	4416.45	-711.36	-222.29	732.05	0.68	
4585.00	11.420	113.240	4508.55	-728.13	-229.36	749.46	0.54	
4679.00	11.780	121.440	4600.64	-744.10	-238.03	766.19	1.79	
4773.00	11.290	117.230	4692.74	-759.66	-247.25	782.56	1.04	
4867.00	11.410	112.410	4784.90	-775.74	-255.01	799.34	1.02	
4960.00	11.630	110.810	4876.03	-792.39	-261.84	816.61	0.42	
5052.00	11.420	110.780	4966.18	-808.98	-268.37	833.79	0.23	
5146.00	11.280	111.090	5058.34	-825.66	-274.98	851.07	0.16	
5238.00	11.480	112.810	5148.53	-841.88	-281.77	867.90	0.43	
5331.00	11.410	112.570	5239.68	-858.27	-288.88	884.93	0.09	
5424.00	10.950	110.190	5330.92	-874.46	-295.46	901.71	0.70	



SRC ENERGY

Actual Wellpath Report

AG 31C-31-L AWP

Page 4 of 10

**BAKER
HUGHES****REFERENCE WELLPATH IDENTIFICATION**

Operator	SRC ENERGY	Slot	SLOT#07 AG 31C-31-L (965'FNL & 531'FEL SEC 32)
Area	COLORADO	Well	AG 31C-31-L
Field	WELD COUNTY (NAD83,TRUE NORTH)	Wellbore	AG 31C-31-L AWB
Facility	SEC.32-T06N-R66W		

WELLPATH DATA (201 stations)

MD [ft]	Inclination [°]	Azimuth [°]	TVD [ft]	Vert Sect [ft]	North [ft]	East [ft]	DLS [°/100ft]	Comments
5518.00	11.660	107.990	5423.09	-891.32	-301.48	919.13	0.88	
5610.00	11.430	103.230	5513.23	-908.57	-306.44	936.84	1.06	
5702.00	11.430	103.290	5603.41	-925.91	-310.62	954.59	0.01	
5796.00	11.290	102.610	5695.57	-943.56	-314.77	972.63	0.21	
5890.00	11.460	102.490	5787.72	-961.26	-318.80	990.73	0.18	
5984.00	11.460	103.380	5879.85	-979.06	-322.98	1008.93	0.19	
6077.00	11.490	103.560	5970.99	-996.64	-327.29	1026.93	0.05	
6170.00	11.240	104.740	6062.16	-1013.98	-331.76	1044.70	0.37	
6264.00	11.480	104.320	6154.32	-1031.46	-336.41	1062.62	0.27	
6356.00	10.870	114.630	6244.59	-1047.68	-342.29	1079.38	2.27	
6449.00	10.620	123.830	6335.96	-1062.03	-350.71	1094.47	1.86	
6543.00	6.310	177.950	6429.05	-1068.58	-360.72	1101.86	9.14	
6636.00	8.380	248.200	6521.44	-1061.85	-368.36	1095.74	9.25	
6729.00	15.240	265.980	6612.45	-1043.13	-371.74	1077.23	8.27	
6822.00	23.390	268.560	6700.14	-1012.42	-373.06	1046.53	8.81	
6915.00	31.770	265.190	6782.50	-969.43	-375.58	1003.60	9.16	
7008.00	39.310	264.490	6858.12	-915.41	-380.47	949.80	8.12	
7101.00	47.640	266.610	6925.56	-851.49	-385.34	886.06	9.09	
7194.00	56.550	265.630	6982.63	-778.19	-390.34	812.93	9.62	
7287.00	64.840	264.840	7028.12	-697.17	-397.09	732.19	8.94	
7380.00	73.190	264.410	7061.39	-610.42	-405.23	645.81	8.99	
7475.00	84.600	267.140	7079.66	-517.36	-412.04	553.00	12.34	
7569.00	90.460	266.750	7083.71	-423.53	-417.04	459.27	6.25	
7662.00	92.370	264.990	7081.41	-330.57	-423.74	366.54	2.79	LANDING POINT (1401'FNL & 165'FEL, SEC.32)
7757.00	92.190	265.000	7077.64	-235.65	-432.02	271.98	0.19	
7850.00	91.630	264.270	7074.54	-142.71	-440.71	179.44	0.99	
7944.00	92.770	265.060	7070.93	-48.78	-449.44	85.92	1.48	
8038.00	92.550	263.330	7066.56	45.09	-458.94	-7.49	1.85	
8131.00	91.480	262.110	7063.29	137.94	-470.72	-99.68	1.74	
8225.00	91.260	262.850	7061.05	231.80	-483.01	-192.85	0.82	



SRC ENERGY

Actual Wellpath Report

AG 31C-31-L AWP

Page 5 of 10

**BAKER
HUGHES****REFERENCE WELLPATH IDENTIFICATION**

Operator	SRC ENERGY	Slot	SLOT#07 AG 31C-31-L (965'FNL & 531'FEL SEC 32)
Area	COLORADO	Well	AG 31C-31-L
Field	WELD COUNTY (NAD83, TRUE NORTH)	Wellbore	AG 31C-31-L AWB
Facility	SEC.32-T06N-R66W		

WELLPATH DATA (201 stations)

MD [ft]	Inclination [°]	Azimuth [°]	TVD [ft]	Vert Sect [ft]	North [ft]	East [ft]	DLS [°/100ft]	Comments
8319.00	91.420	266.490	7058.85	325.75	-491.74	-286.40	3.88	
8411.00	91.480	271.640	7056.52	417.49	-493.24	-378.33	5.60	
8505.00	91.290	272.000	7054.25	510.86	-490.26	-472.25	0.43	
8597.00	91.720	271.190	7051.83	602.27	-487.70	-564.18	1.00	
8690.00	91.600	269.160	7049.14	694.89	-487.41	-657.14	2.19	
8783.00	91.050	266.980	7046.99	787.75	-490.55	-750.06	2.42	
8877.00	91.390	267.120	7044.98	881.68	-495.38	-843.91	0.39	
8970.00	89.750	264.540	7044.06	974.66	-502.14	-936.65	3.29	
9062.00	88.800	262.300	7045.22	1066.60	-512.68	-1028.03	2.64	
9157.00	89.290	263.000	7046.81	1161.48	-524.84	-1122.23	0.90	
9251.00	91.230	266.120	7046.38	1255.46	-533.75	-1215.79	3.91	
9346.00	91.140	268.530	7044.41	1350.37	-538.18	-1310.66	2.54	
9441.00	91.260	268.980	7042.42	1445.18	-540.24	-1405.62	0.49	
9535.00	90.830	267.580	7040.71	1539.03	-543.06	-1499.56	1.56	
9628.00	90.490	270.920	7039.64	1631.79	-544.28	-1592.53	3.61	
9721.00	89.540	271.850	7039.61	1724.26	-542.03	-1685.50	1.43	
9817.00	87.810	270.740	7041.83	1819.71	-539.86	-1781.45	2.14	
9912.00	86.830	270.660	7046.28	1914.18	-538.70	-1876.33	1.04	
10004.00	87.010	271.320	7051.22	2005.60	-537.12	-1968.19	0.74	
10097.00	87.010	271.550	7056.07	2097.94	-534.79	-2061.03	0.25	
10189.00	89.820	271.000	7058.62	2189.39	-532.74	-2152.96	3.11	
10281.00	90.830	269.170	7058.09	2281.06	-532.61	-2244.96	2.27	
10374.00	90.680	266.990	7056.87	2373.94	-535.72	-2337.89	2.35	
10466.00	90.580	268.590	7055.86	2465.85	-539.27	-2429.81	1.74	
10559.00	90.620	264.530	7054.88	2558.80	-544.85	-2522.62	4.37	
10651.00	90.950	262.480	7053.62	2650.74	-555.26	-2614.02	2.26	
10743.00	90.830	267.590	7052.19	2742.70	-563.21	-2705.63	5.56	
10837.00	89.750	269.750	7051.72	2836.53	-565.40	-2799.60	2.57	
10929.00	90.060	271.570	7051.87	2928.12	-564.34	-2891.59	2.01	
11022.00	89.970	272.070	7051.84	3020.52	-561.38	-2984.54	0.55	



SRC ENERGY

Actual Wellpath Report

AG 31C-31-L AWP

Page 6 of 10

**BAKER
HUGHES**

REFERENCE WELLPATH IDENTIFICATION

Operator	SRC ENERGY	Slot	SLOT#07 AG 31C-31-L (965'FNL & 531'FEL SEC 32)
Area	COLORADO	Well	AG 31C-31-L
Field	WELD COUNTY (NAD83,TRUE NORTH)	Wellbore	AG 31C-31-L AWB
Facility	SEC.32-T06N-R66W		

WELLPATH DATA (201 stations)

MD [ft]	Inclination [°]	Azimuth [°]	TVD [ft]	Vert Sect [ft]	North [ft]	East [ft]	DLS [°/100ft]	Comments
11117.00	90.400	271.190	7051.54	3114.94	-558.68	-3079.50	1.03	
11209.00	90.180	269.890	7051.07	3206.55	-557.81	-3171.49	1.43	
11302.00	90.770	269.680	7050.30	3299.26	-558.16	-3264.49	0.67	
11396.00	90.550	267.980	7049.22	3393.07	-560.08	-3358.46	1.82	
11489.00	90.370	265.530	7048.47	3486.03	-565.34	-3451.30	2.64	
11584.00	90.890	264.370	7047.43	3581.02	-573.71	-3545.92	1.34	
11678.00	90.920	264.140	7045.94	3674.99	-583.11	-3639.44	0.25	
11771.00	91.420	265.820	7044.04	3767.97	-591.25	-3732.06	1.88	
11864.00	90.830	266.710	7042.22	3860.94	-597.31	-3824.84	1.15	
11958.00	91.050	267.710	7040.67	3954.87	-601.88	-3918.72	1.09	
12052.00	91.230	266.940	7038.80	4048.79	-606.27	-4012.60	0.84	
12146.00	89.380	265.910	7038.30	4142.77	-612.13	-4106.41	2.25	
12241.00	89.570	266.610	7039.17	4237.75	-618.33	-4201.20	0.76	
12336.00	89.010	266.950	7040.35	4332.71	-623.66	-4296.04	0.69	
12429.00	89.140	267.880	7041.85	4425.63	-627.86	-4388.93	1.01	
12522.00	91.020	268.970	7041.72	4518.49	-630.41	-4481.89	2.34	
12617.00	91.200	268.370	7039.88	4613.31	-632.62	-4576.85	0.66	
12711.00	91.140	268.320	7037.96	4707.15	-635.33	-4670.79	0.08	
12806.00	90.060	268.410	7036.97	4802.01	-638.04	-4765.75	1.14	
12900.00	90.120	268.130	7036.82	4895.88	-640.88	-4859.70	0.30	
12994.00	89.720	268.730	7036.95	4989.74	-643.45	-4953.67	0.77	
13087.00	90.120	269.900	7037.08	5082.51	-644.57	-5046.66	1.33	
13179.00	90.060	271.660	7036.94	5174.09	-643.31	-5138.65	1.91	
13273.00	90.090	271.800	7036.81	5267.50	-640.48	-5232.60	0.15	
13365.00	89.570	270.180	7037.09	5359.04	-638.89	-5324.59	1.85	
13458.00	89.720	267.840	7037.66	5451.84	-640.49	-5417.56	2.52	
13552.00	89.850	266.200	7038.02	5545.79	-645.38	-5511.43	1.75	
13646.00	89.660	264.010	7038.42	5639.78	-653.40	-5605.08	2.34	
13740.00	89.690	263.600	7038.95	5733.75	-663.54	-5698.53	0.44	
13833.00	89.750	264.190	7039.41	5826.72	-673.43	-5791.00	0.64	



SRC ENERGY

Actual Wellpath Report

AG 31C-31-L AWP

Page 7 of 10

**BAKER
HUGHES**

REFERENCE WELLPATH IDENTIFICATION

Operator	SRC ENERGY	Slot	SLOT#07 AG 31C-31-L (965'FNL & 531'FEL SEC 32)
Area	COLORADO	Well	AG 31C-31-L
Field	WELD COUNTY (NAD83,TRUE NORTH)	Wellbore	AG 31C-31-L AWB
Facility	SEC.32-T06N-R66W		

WELLPATH DATA (201 stations)

MD [ft]	Inclination [°]	Azimuth [°]	TVD [ft]	Vert Sect [ft]	North [ft]	East [ft]	DLS [°/100ft]	Comments
13925.00	90.090	267.020	7039.53	5918.71	-680.48	-5882.72	3.10	
14019.00	89.850	267.190	7039.58	6012.66	-685.23	-5976.60	0.31	
14111.00	90.280	268.190	7039.48	6104.58	-688.94	-6068.53	1.18	
14203.00	91.050	267.780	7038.41	6196.47	-692.17	-6160.46	0.95	
14297.00	90.000	268.330	7037.55	6290.36	-695.36	-6254.40	1.26	
14391.00	89.940	266.370	7037.60	6384.29	-699.71	-6348.30	2.09	
14484.00	89.880	269.240	7037.75	6477.19	-703.27	-6441.22	3.09	
14578.00	90.030	270.630	7037.82	6570.88	-703.38	-6535.22	1.49	
14672.00	89.850	269.470	7037.92	6664.56	-703.30	-6629.22	1.25	
14766.00	89.910	268.830	7038.11	6758.34	-704.69	-6723.20	0.68	
14860.00	89.570	265.490	7038.54	6852.28	-709.35	-6817.07	3.57	
14954.00	90.180	266.450	7038.75	6946.27	-715.95	-6910.84	1.21	
15142.00	90.030	267.290	7038.40	7134.20	-726.22	-7098.56	0.45	
15237.00	89.970	266.750	7038.40	7229.16	-731.16	-7193.43	0.57	
15330.00	89.750	265.700	7038.63	7322.14	-737.28	-7286.23	1.15	
15424.00	89.940	264.990	7038.88	7416.14	-744.91	-7379.91	0.78	
15518.00	89.910	264.990	7039.01	7510.14	-753.12	-7473.56	0.03	
15611.00	89.910	265.240	7039.15	7603.14	-761.04	-7566.22	0.27	
15706.00	90.090	267.820	7039.15	7698.11	-766.79	-7661.04	2.72	
15801.00	89.820	267.770	7039.23	7793.02	-770.44	-7755.96	0.29	
15895.00	90.090	268.470	7039.30	7886.90	-773.52	-7849.91	0.80	
15987.00	89.970	268.910	7039.25	7978.74	-775.63	-7941.89	0.50	
16079.00	89.020	268.580	7040.06	8070.57	-777.64	-8033.86	1.09	
16172.00	90.180	269.590	7040.71	8163.36	-779.13	-8126.85	1.65	
16264.00	89.850	267.840	7040.69	8255.20	-781.19	-8218.82	1.94	
16357.00	89.050	269.590	7041.58	8348.02	-783.28	-8311.79	2.07	
16451.00	88.950	270.020	7043.22	8441.72	-783.60	-8405.77	0.47	
16545.00	88.580	270.760	7045.25	8535.32	-782.96	-8499.75	0.88	
16638.00	88.980	271.680	7047.23	8627.80	-780.98	-8592.70	1.08	
16732.00	88.980	269.670	7048.90	8721.37	-779.87	-8686.68	2.14	



SRC ENERGY

Actual Wellpath Report

AG 31C-31-L AWP

Page 8 of 10

**BAKER
HUGHES****REFERENCE WELLPATH IDENTIFICATION**

Operator	SRC ENERGY	Slot	SLOT#07 AG 31C-31-L (965'FNL & 531'FEL SEC 32)
Area	COLORADO	Well	AG 31C-31-L
Field	WELD COUNTY (NAD83, TRUE NORTH)	Wellbore	AG 31C-31-L AWB
Facility	SEC.32-T06N-R66W		

WELLPATH DATA (201 stations)

MD [ft]	Inclination [°]	Azimuth [°]	TVD [ft]	Vert Sect [ft]	North [ft]	East [ft]	DLS [°/100ft]	Comments
16824.00	88.620	267.870	7050.83	8813.18	-781.84	-8778.63	1.99	
16918.00	89.820	268.950	7052.11	8907.03	-784.45	-8872.58	1.72	
17012.00	89.940	269.890	7052.31	9000.78	-785.40	-8966.58	1.01	
17104.00	89.820	271.320	7052.50	9092.39	-784.43	-9058.57	1.56	
17199.00	90.030	270.550	7052.62	9186.93	-782.88	-9153.56	0.84	
17292.00	89.820	267.200	7052.74	9279.73	-784.71	-9246.52	3.61	
17388.00	91.630	265.650	7051.53	9375.70	-790.69	-9342.32	2.48	
17481.00	90.710	265.200	7049.63	9468.68	-798.11	-9435.01	1.10	
17575.00	90.620	266.740	7048.54	9562.66	-804.71	-9528.77	1.64	
17670.00	90.400	264.880	7047.69	9657.65	-811.66	-9623.50	1.97	
17762.00	90.550	265.380	7046.93	9749.65	-819.47	-9715.17	0.57	
17854.00	90.280	267.090	7046.26	9841.63	-825.51	-9806.96	1.88	
17949.00	90.430	268.350	7045.68	9936.54	-829.29	-9901.88	1.34	
18043.00	90.550	269.660	7044.87	10030.34	-830.92	-9995.86	1.40	
18137.00	90.460	269.180	7044.04	10124.09	-831.87	-10089.86	0.52	
18230.00	90.580	268.290	7043.20	10216.92	-833.92	-10182.83	0.97	
18324.00	90.150	268.320	7042.60	10310.79	-836.70	-10276.79	0.46	
18417.00	90.150	267.610	7042.36	10403.68	-840.00	-10369.73	0.76	
18510.00	90.280	268.050	7042.01	10496.59	-843.53	-10462.66	0.49	
18577.00	90.340	267.790	7041.65	10563.52	-845.96	-10529.61	0.40	LAST BHI MWD SURVEY (1370'FNL & 99'FWL, SEC.31)
18600.00	90.340	267.790	7041.51	10586.50	-846.84	-10552.60	0.00	PROJECTION TO BIT (1371'FNL & 76'FWL, SEC.31)



Actual Wellpath Report

AG 31C-31-L AWP

Page 9 of 10



REFERENCE WELLPATH IDENTIFICATION

Operator	SRC ENERGY	Slot	SLOT#07 AG 31C-31-L (965'FNL & 531'FEL SEC 32)
Area	COLORADO	Well	AG 31C-31-L
Field	WELD COUNTY (NAD83, TRUE NORTH)	Wellbore	AG 31C-31-L AWB
Facility	SEC.32-T06N-R66W		

HOLE & CASING SECTIONS - Ref Wellbore: AG 31C-31-L AWB Ref Wellpath: AG 31C-31-L AWP

String/Diameter	Start MD [ft]	End MD [ft]	Interval [ft]	Start TVD [ft]	End TVD [ft]	Start N/S [ft]	Start E/W [ft]	End N/S [ft]	End E/W [ft]
13.5in Open Hole	20.00	1762.00	1742.00	20.00	1740.47	0.00	0.00	-75.78	229.28
9.625in Casing Surface	20.00	1762.00	1742.00	20.00	1740.47	0.00	0.00	-75.78	229.28
8.5in Open Hole	1762.00	18600.00	16838.00	1740.47	7041.51	-75.78	229.28	-846.84	-10552.60

TARGETS

Name	TVD [ft]	North [ft]	East [ft]	Grid East [US ft]	Grid North [US ft]	Latitude	Longitude	Shape
SEC.31-T06N-R66W	-18.00	-2475.93	-11174.46	3185242.22	1404728.43	40°26'32.903"N	104°50'04.052"W	polygon
SEC.32-T06N-R66W	-18.00	-2475.93	-11174.46	3185242.22	1404728.43	40°26'32.903"N	104°50'04.052"W	polygon
AG 31C-31-L BHL REV-2 (1392'FNL & 75'FWL, SEC.31)	7048.59	-868.15	-10553.91	3185849.93	1406341.02	40°26'48.793"N	104°49'56.035"W	point
AG 31C-31-L BHL REV-1 ON PLAT (CDLL, 1392'FNL & 75'FWL SEC 31)	7062.00	-868.15	-10553.91	3185849.93	1406341.02	40°26'48.793"N	104°49'56.035"W	circle
AG 31C-31-L TOP OF PROD (1410'FNL & 75'FEL SEC 32)	7062.00	-433.23	456.22	3196855.82	1406863.54	40°26'53.113"N	104°47'33.626"W	circle
AG 31C-31-L TOP OF PROD REV-2 (1410'FNL & 75'FEL, SEC.32)	7087.06	-433.23	456.22	3196855.82	1406863.54	40°26'53.113"N	104°47'33.626"W	point

WELLPATH COMPOSITION - Ref Wellbore: AG 31C-31-L AWB Ref Wellpath: AG 31C-31-L AWP

Start MD [ft]	End MD [ft]	Positional Uncertainty Model	Log Name/Comment	Wellbore
20.00	1712.00	Custom BHI NaviTrak (Standard Rotating+Axial Corr) (Rockies 0.03Gt model)	BHI NAVITRAK W/APS EM 13.5" (STD ROTATING, AXIAL, ROCKIES GT)<106-1712>	AG 31C-31-L AWB
1712.00	18577.00	Custom BHI AutoTrak Curve (IFR1, Short) (Rockies 0.03Gt model)	BHI ATK CURVE SURVEYS <1870-18577>	AG 31C-31-L AWB
18577.00	18600.00	Blind Drilling (std)	Projection to bit	AG 31C-31-L AWB



Actual Wellpath Report

AG 31C-31-L AWP

Page 10 of 10



REFERENCE WELLPATH IDENTIFICATION			
Operator	SRC ENERGY	Slot	SLOT#07 AG 31C-31-L (965'FNL & 531'FEL SEC 32)
Area	COLORADO	Well	AG 31C-31-L
Field	WELD COUNTY (NAD83,TRUE NORTH)	Wellbore	AG 31C-31-L AWB
Facility	SEC.32-T06N-R66W		

WELLPATH COMMENTS				
MD [ft]	Inclination [°]	Azimuth [°]	TVD [ft]	Comment
7662.00	92.370	264.990	7081.41	LANDING POINT (1401'FNL & 165'FEL, SEC.32)
18577.00	90.340	267.790	7041.65	LAST BHI MWD SURVEY (1370'FNL & 99'FWL, SEC.31)
18600.00	90.340	267.790	7041.51	PROJECTION TO BIT (1371'FNL & 76'FWL, SEC.31)