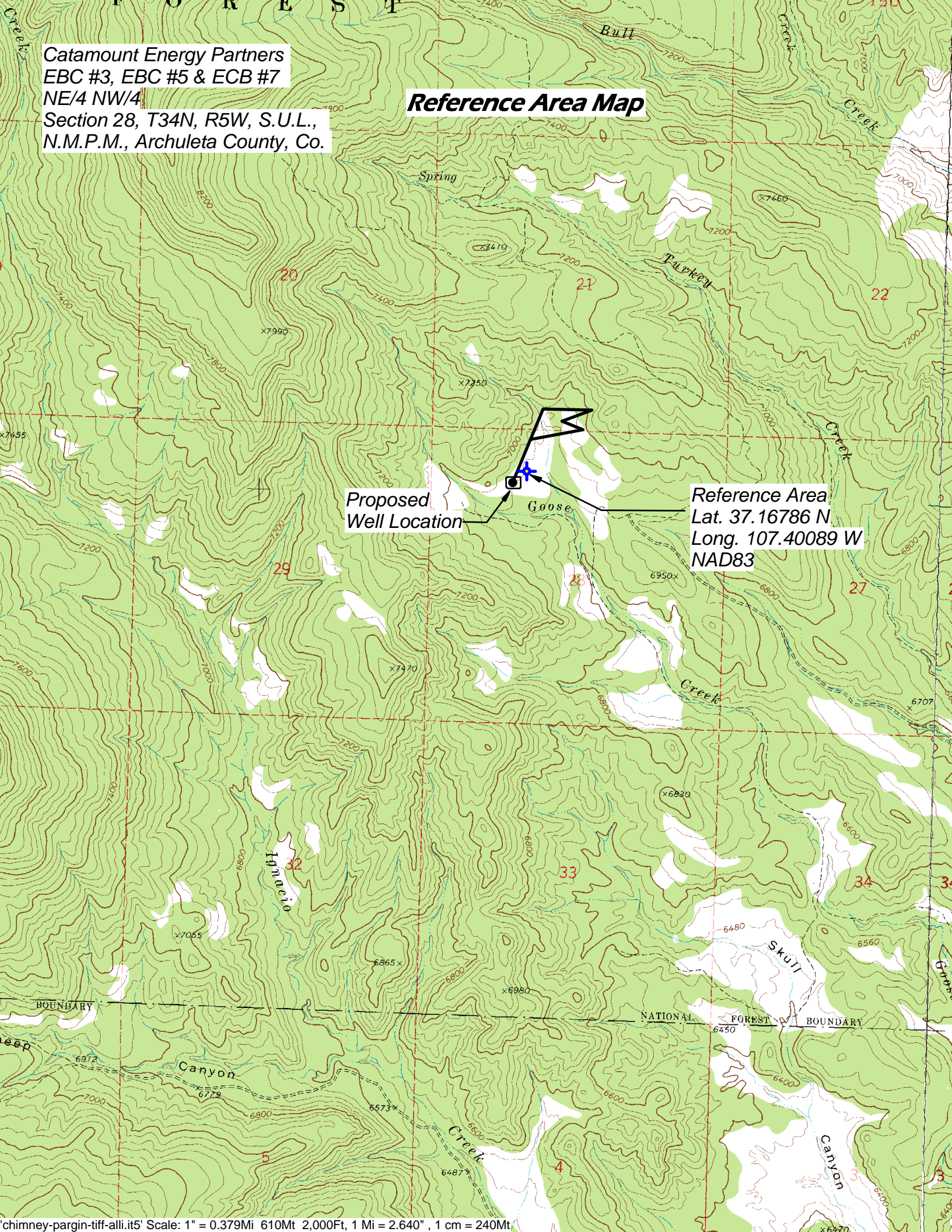


Catamount Energy Partners
EBC #3, EBC #5 & ECB #7
NE/4 NW/4
Section 28, T34N, R5W, S.U.L.,
N.M.P.M., Archuleta County, Co.

Reference Area Map



Proposed Well Location

Reference Area
Lat. 37.16786 N
Long. 107.40089 W
NAD83