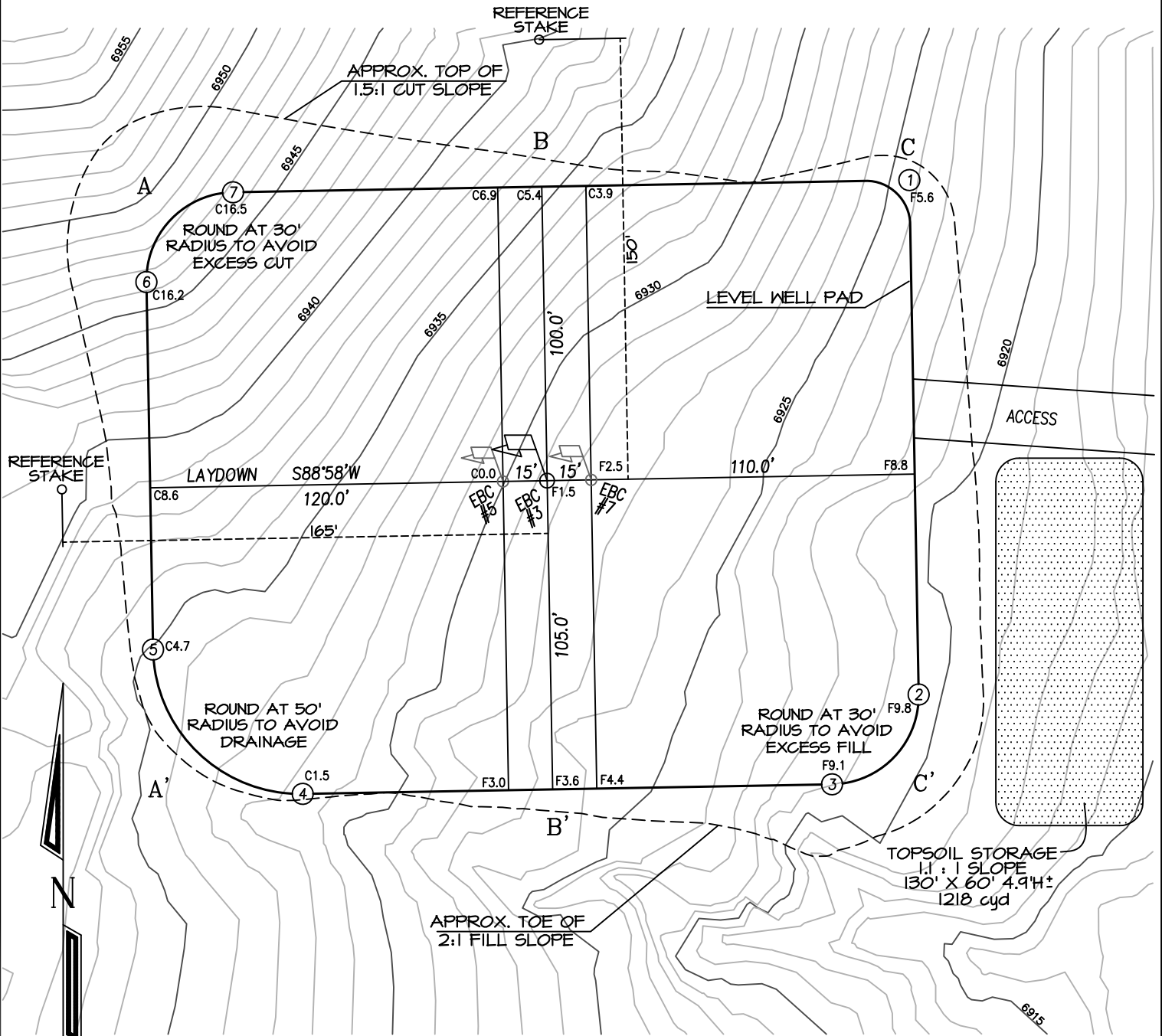


CATAMOUNT ENERGY PARTNERS: EBC #3
945' FNL, 1549' FWL, SECTION 28, T-34-N, R-5-W, S.U.L., N.M.P.M.,
ARCHULETA COUNTY, CO. GROUND LEVEL ELEVATION: 6930'
LAT: 37.167292, LONG: 107.401678 NAD 83 DATUM

PAD DRAWING



Contours created from files provided by Stoner Engineering
 CONTOUR INTERVAL = 1'



ROUND CORNERS AT 15'
 RADIUS OR AS NEEDED

6" TOPSOIL STRIPPING

APPROXIMATE EARTHWORKS	
CUT:	7,305 CUBIC YARDS
FILL:	6,087 CUBIC YARDS
TOPSOIL:	1,218 CUBIC YARDS
NET EXPORT:	0 CUBIC YARDS

EXISTING PAD SIZE:	0.00 ACRES
PROPOSED EXPANSION:	0.00 ACRES
LEVEL PAD SIZE:	1.20 ACRES
TOTAL DISTURBED AREA:	1.51 ACRES
PERMITTED AREA:	1.51 ACRES

STAMP & SIGNATURE APPLY TO
 FIGURES 2 & 3 HEREAFTER

FIGURE 1

