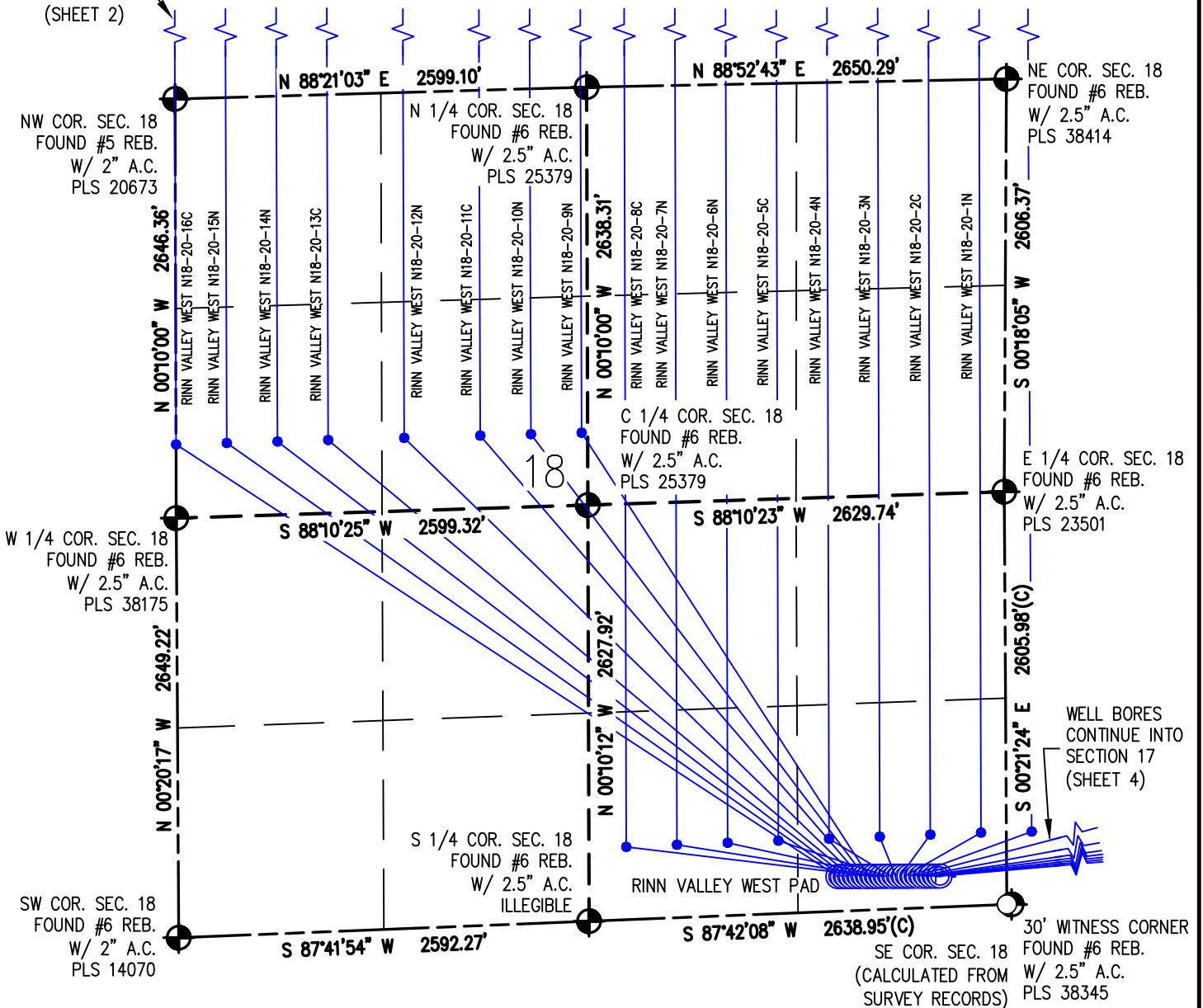


MULTI WELL PLAN RINN VALLEY WEST PAD

SE 1/4 SE 1/4 SECTION 18, TOWNSHIP 2 NORTH, RANGE 68 WEST, 6TH P.M.

WELL BORES
CONTINUE INTO
SECTION 7
(SHEET 2)



WELL BORES
CONTINUE INTO
SECTION 17
(SHEET 4)



0 1000'
Scale 1" = 1000' ft

LEGEND

- - FOUND/SET SURVEY MONUMENT PER MONUMENT RECORD EXCEPTIONS NOTED.
- - CALCULATED SURVEY MONUMENT POSITION
- (C) - CALCULATED DIMENSION



DRAWN BY	CHECKED BY
DAM	AAD
INITIAL SUBMITTAL	3/9/2018
REVISED	3/15/2018
DRAWING SIZE	8.5" X 11"
JOB NO.	EXT02N68W17-01
SHEET	1 OF 6

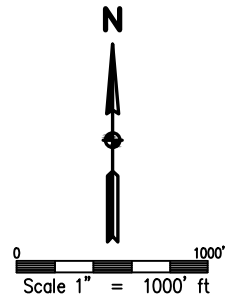
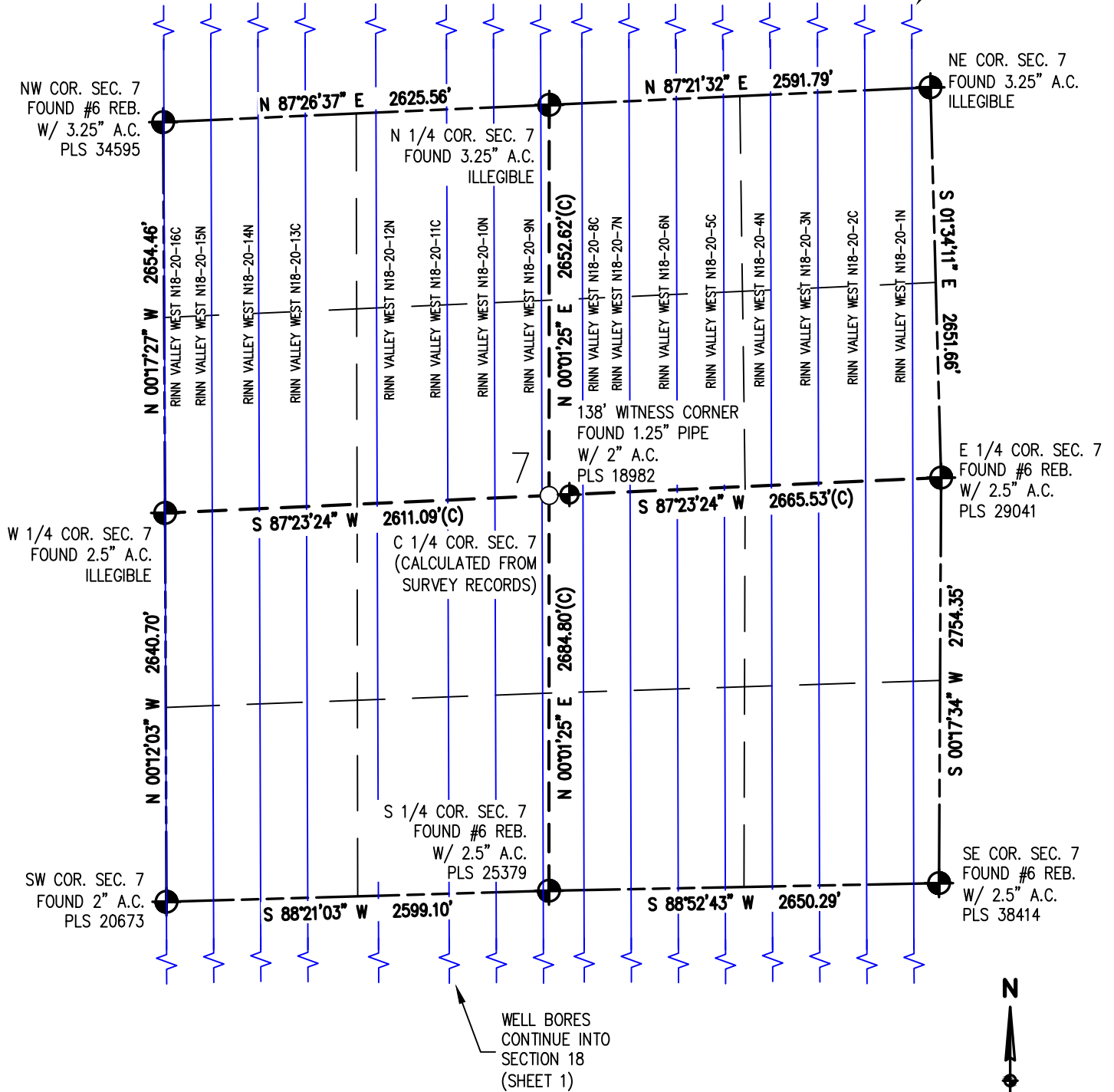
BASLINE
Engineering - Planning - Surveying

4007 S. LINCOLN AVENUE, SUITE 405 • LOVELAND, COLORADO 80537
P: 970.353.7800 • F: 970.353.7801 • www.baslinecorp.com

MULTI WELL PLAN RINN VALLEY WEST PAD

SE 1/4 SE 1/4 SECTION 18, TOWNSHIP 2 NORTH, RANGE 68 WEST, 6TH P.M.

WELL BORES
CONTINUE INTO
SECTION 6
(SHEET 3)



LEGEND

- - FOUND/SET SURVEY MONUMENT PER MONUMENT RECORD EXCEPTIONS NOTED.
- - CALCULATED SURVEY MONUMENT POSITION
- (C) - CALCULATED DIMENSION



DRAWN BY	DAM	CHECKED BY	AAD
INITIAL SUBMITTAL	3/9/2018	REVISED	3/15/2018
DRAWING SIZE	8.5" X 11"	JOB NO.	EXT02N68W17-01
SHEET	2	OF	6

BASELINE
Engineering - Planning - Surveying

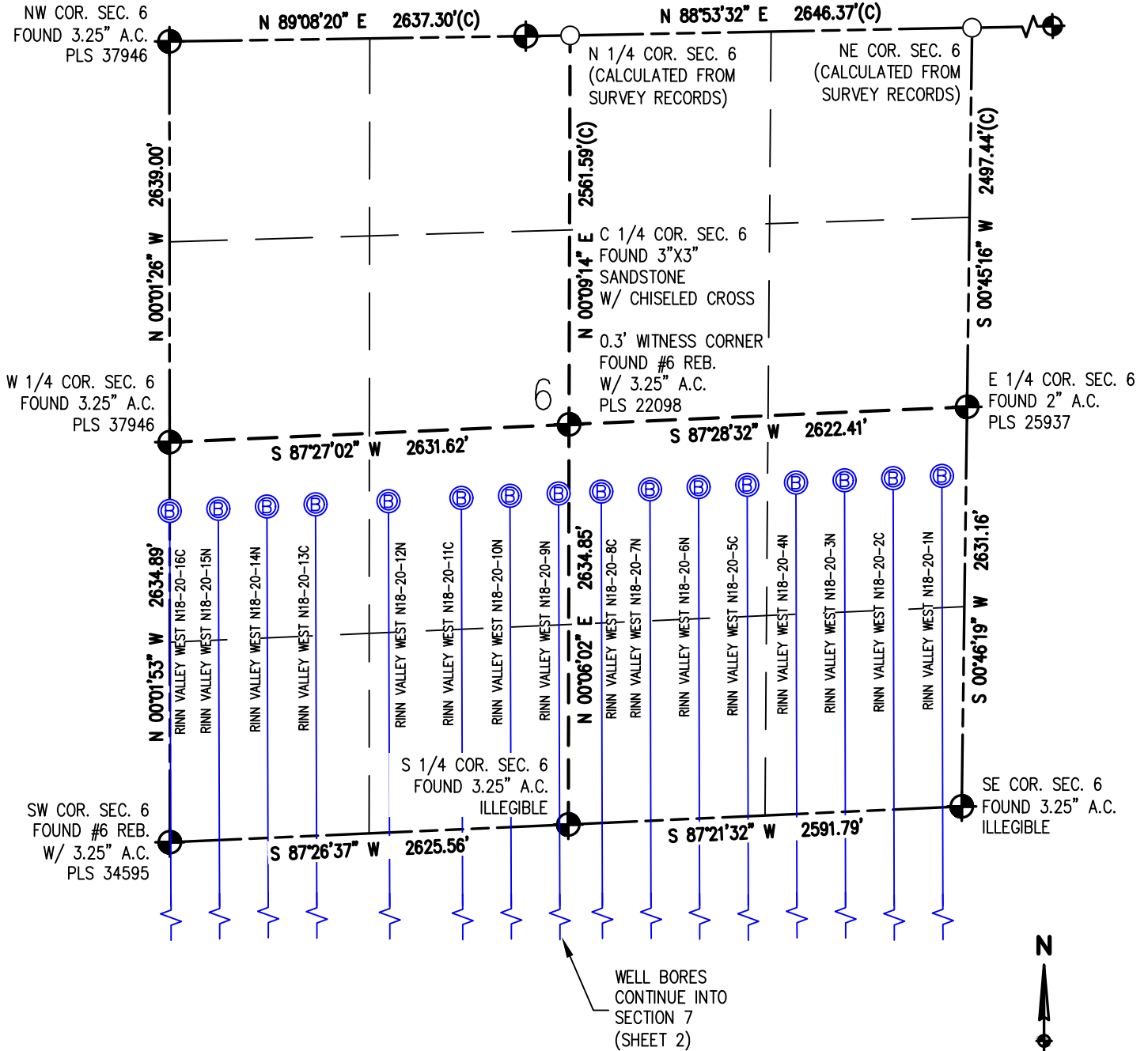
4007 S. LINCOLN AVENUE, SUITE 405 • LOVELAND, COLORADO 80537
P: 970.353.7800 • F: 970.353.7801 • www.baselinecorp.com

MULTI WELL PLAN RINN VALLEY WEST PAD

SE1/4 SE1/4 SECTION 18, TOWNSHIP 2 NORTH, RANGE 68 WEST, 6TH P.M.

291.7' WITNESS CORNER
FOUND #6 REB.
W/ 3.25" A.C.
PLS 22098

1004.10' WITNESS CORNER
FOUND 2.5" PIPE
W/ 3.25" A.C.
PLS 38285



LEGEND

- - FOUND/SET SURVEY MONUMENT PER MONUMENT RECORD EXCEPTIONS NOTED.
- - CALCULATED SURVEY MONUMENT POSITION
- (C) - CALCULATED DIMENSION



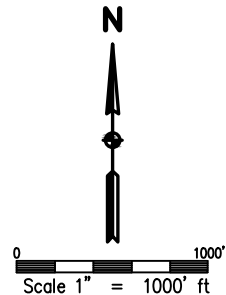
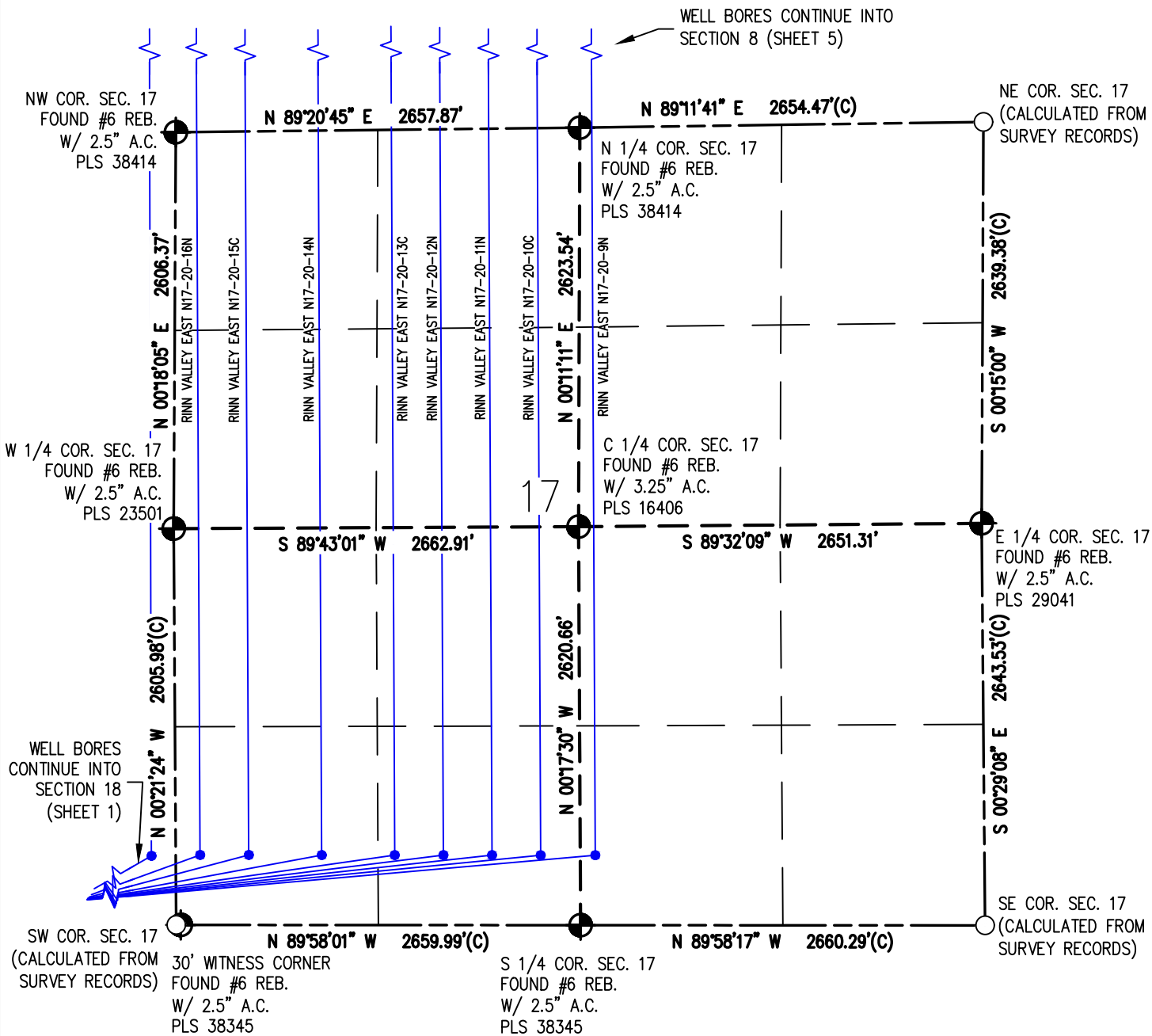
DRAWN BY	CHECKED BY
DAM	AAD
INITIAL SUBMITTAL	3/9/2018
REVISED	3/15/2018
DRAWING SIZE	8.5" X 11"
JOB NO.	EXT02N68W17-01
SHEET	3 of 6

BASELINE
Engineering - Planning - Surveying

4007 S. LINCOLN AVENUE, SUITE 405 • LOVELAND, COLORADO 80537
P: 970.363.7800 • F: 970.363.7801 • www.baselinecorp.com

MULTI WELL PLAN RINN VALLEY WEST PAD

SE 1/4 SE 1/4 SECTION 18, TOWNSHIP 2 NORTH, RANGE 68 WEST, 6TH P.M.



LEGEND

- - FOUND/SET SURVEY MONUMENT PER MONUMENT RECORD EXCEPTIONS NOTED.
- - CALCULATED SURVEY MONUMENT POSITION
- (C) - CALCULATED DIMENSION



DRAWN BY
DAM

CHECKED BY
AAD

INITIAL SUBMITTAL 3/9/2018
REVISED 3/15/2018
DRAWING SIZE 8.5" X 11"
JOB NO. EXT02N68W17-01
SHEET 4 OF 6

BASELINE
Engineering - Planning - Surveying

4007 S. LINCOLN AVENUE, SUITE 405 • LOVELAND, COLORADO 80537
P: 970.353.7800 • F: 970.353.7801 • www.baselinecorp.com

MULTI WELL PLAN RINN VALLEY WEST PAD

SE 1/4 SE 1/4 SECTION 18, TOWNSHIP 2 NORTH, RANGE 68 WEST, 6TH P.M.

N 1/4 COR. SEC. 8
FOUND #6 REB.
W/ 3.25" A.C.
PLS 7239

NW COR. SEC. 8
FOUND 3.25" A.C.
ILLEGIBLE

NE COR. SEC. 8
FOUND #6 REB.
W/ 3.25" A.C.
PLS 34977

W 1/4 COR. SEC. 8
FOUND #6 REB.
W/ 2.5" A.C.
PLS 29041

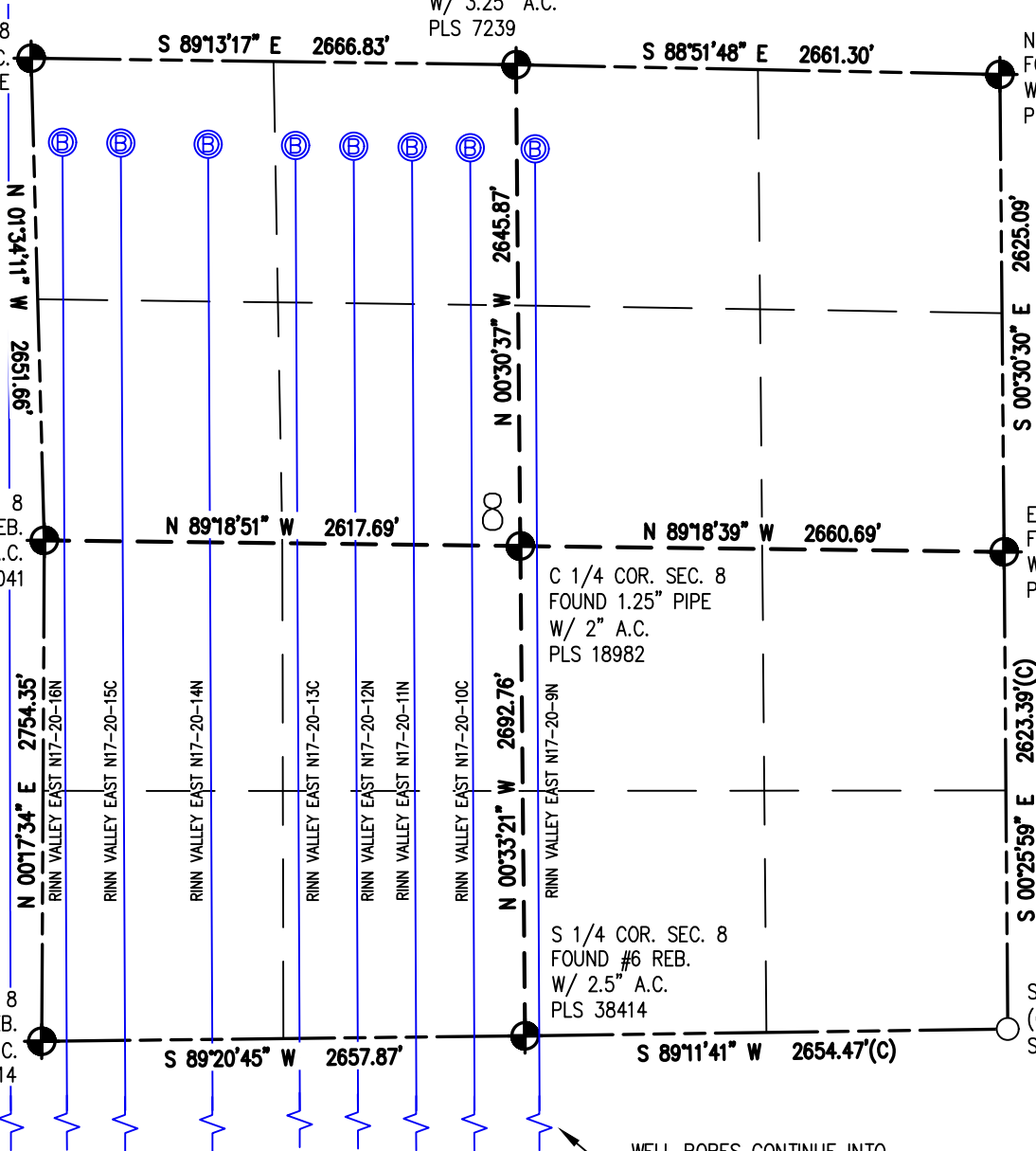
E 1/4 COR. SEC. 8
FOUND #6 REB.
W/ 2.5" A.C.
PLS 24305

C 1/4 COR. SEC. 8
FOUND 1.25" PIPE
W/ 2" A.C.
PLS 18982

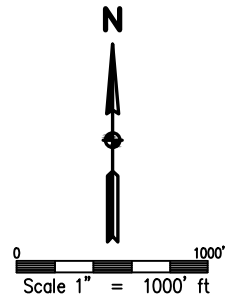
S 1/4 COR. SEC. 8
FOUND #6 REB.
W/ 2.5" A.C.
PLS 38414

SE COR. SEC. 8
(CALCULATED FROM
SURVEY RECORDS)

SW COR. SEC. 8
FOUND #6 REB.
W/ 2.5" A.C.
PLS 38414



WELL BORES CONTINUE INTO
SECTION 17 (SHEET 4)



LEGEND

- - FOUND/SET SURVEY MONUMENT PER MONUMENT RECORD EXCEPTIONS NOTED.
- - CALCULATED SURVEY MONUMENT POSITION
- (C) - CALCULATED DIMENSION



DRAWN BY	CHECKED BY
DAM	AAD
INITIAL SUBMITTAL	3/9/2018
REVISED	3/15/2018
DRAWING SIZE	8.5" X 11"
JOB NO.	EXT02N68W17-01
SHEET	5 OF 6

BASLINE
Engineering - Planning - Surveying

4007 S. LINCOLN AVENUE, SUITE 405 • LOVELAND, COLORADO 80537
P: 970.353.7800 • F: 970.353.7801 • www.baselinecorp.com

MULTI WELL PLAN
RINN VALLEY WEST PAD

SE1/4 SE1/4 SECTION 18, TOWNSHIP 2 NORTH, RANGE 68 WEST, 6TH P.M.

NOTES (SURFACE HOLES):

RINN VALLEY WEST N18-20-16C TO BE AT 219' FSL, 1065' FEL, SEC. 18	RINN VALLEY WEST N18-20-4N TO BE AT 207' FSL, 729' FEL, SEC. 18
RINN VALLEY WEST N18-20-15N TO BE AT 218' FSL, 1037' FEL, SEC. 18	RINN VALLEY WEST N18-20-3N TO BE AT 206' FSL, 701' FEL, SEC. 18
RINN VALLEY WEST N18-20-14N TO BE AT 217' FSL, 1009' FEL, SEC. 18	RINN VALLEY WEST N18-20-2C TO BE AT 205' FSL, 673' FEL, SEC. 18
RINN VALLEY WEST N18-20-13C TO BE AT 216' FSL, 981' FEL, SEC. 18	RINN VALLEY WEST N18-20-1N TO BE AT 204' FSL, 645' FEL, SEC. 18
RINN VALLEY WEST N18-20-12N TO BE AT 215' FSL, 953' FEL, SEC. 18	RINN VALLEY EAST N17-20-16N TO BE AT 203' FSL, 617' FEL, SEC. 18
RINN VALLEY WEST N18-20-11C TO BE AT 214' FSL, 925' FEL, SEC. 18	RINN VALLEY EAST N17-20-15C TO BE AT 202' FSL, 589' FEL, SEC. 18
RINN VALLEY WEST N18-20-10N TO BE AT 213' FSL, 897' FEL, SEC. 18	RINN VALLEY EAST N17-20-14N TO BE AT 201' FSL, 561' FEL, SEC. 18
RINN VALLEY WEST N18-20-9N TO BE AT 212' FSL, 869' FEL, SEC. 18	RINN VALLEY EAST N17-20-13C TO BE AT 200' FSL, 533' FEL, SEC. 18
RINN VALLEY WEST N18-20-8C TO BE AT 211' FSL, 841' FEL, SEC. 18	RINN VALLEY EAST N17-20-12N TO BE AT 199' FSL, 505' FEL, SEC. 18
RINN VALLEY WEST N18-20-7N TO BE AT 210' FSL, 813' FEL, SEC. 18	RINN VALLEY EAST N17-20-11N TO BE AT 198' FSL, 477' FEL, SEC. 18
RINN VALLEY WEST N18-20-6N TO BE AT 209' FSL, 785' FEL, SEC. 18	RINN VALLEY EAST N17-20-10C TO BE AT 197' FSL, 449' FEL, SEC. 18
RINN VALLEY WEST N18-20-5C TO BE AT 208' FSL, 757' FEL, SEC. 18	RINN VALLEY EAST N17-20-9N TO BE AT 196' FSL, 421' FEL, SEC. 18

NOTES (ENTRY POINTS):

RINN VALLEY WEST N18-20-16C TO BE AT 2180' FNL, 0' FWL, SEC. 18	RINN VALLEY WEST N18-20-4N TO BE AT 460' FSL, 1120' FEL, SEC. 18
RINN VALLEY WEST N18-20-15N TO BE AT 2180' FNL, 320' FWL, SEC. 18	RINN VALLEY WEST N18-20-3N TO BE AT 460' FSL, 800' FEL, SEC. 18
RINN VALLEY WEST N18-20-14N TO BE AT 2180' FNL, 640' FWL, SEC. 18	RINN VALLEY WEST N18-20-2C TO BE AT 460' FSL, 480' FEL, SEC. 18
RINN VALLEY WEST N18-20-13C TO BE AT 2180' FNL, 960' FWL, SEC. 18	RINN VALLEY WEST N18-20-1N TO BE AT 460' FSL, 160' FEL, SEC. 18
RINN VALLEY WEST N18-20-12N TO BE AT 2180' FNL, 1440' FWL, SEC. 18	RINN VALLEY EAST N17-20-16N TO BE AT 460' FSL, 160' FWL, SEC. 17
RINN VALLEY WEST N18-20-11C TO BE AT 2180' FNL, 1920' FWL, SEC. 18	RINN VALLEY EAST N17-20-15C TO BE AT 460' FSL, 480' FWL, SEC. 17
RINN VALLEY WEST N18-20-10N TO BE AT 2180' FNL, 2240' FWL, SEC. 18	RINN VALLEY EAST N17-20-14N TO BE AT 460' FSL, 960' FWL, SEC. 17
RINN VALLEY WEST N18-20-9N TO BE AT 2180' FNL, 2560' FWL, SEC. 18	RINN VALLEY EAST N17-20-13C TO BE AT 460' FSL, 1440' FWL, SEC. 17
RINN VALLEY WEST N18-20-8C TO BE AT 460' FSL, 2400' FEL, SEC. 18	RINN VALLEY EAST N17-20-12N TO BE AT 460' FSL, 1760' FWL, SEC. 17
RINN VALLEY WEST N18-20-7N TO BE AT 460' FSL, 2080' FEL, SEC. 18	RINN VALLEY EAST N17-20-11N TO BE AT 460' FSL, 2080' FWL, SEC. 17
RINN VALLEY WEST N18-20-6N TO BE AT 460' FSL, 1760' FEL, SEC. 18	RINN VALLEY EAST N17-20-10C TO BE AT 460' FSL, 2400' FWL, SEC. 17
RINN VALLEY WEST N18-20-5C TO BE AT 460' FSL, 1440' FEL, SEC. 18	RINN VALLEY EAST N17-20-9N TO BE AT 460' FSL, 2560' FEL, SEC. 17

NOTES (BOTTOM HOLES):

RINN VALLEY WEST N18-20-16C TO BE AT 2180' FSL, 0' FWL, SEC. 6	RINN VALLEY WEST N18-20-4N TO BE AT 2180' FSL, 1120' FEL, SEC. 6
RINN VALLEY WEST N18-20-15N TO BE AT 2180' FSL, 320' FWL, SEC. 6	RINN VALLEY WEST N18-20-3N TO BE AT 2180' FSL, 800' FEL, SEC. 6
RINN VALLEY WEST N18-20-14N TO BE AT 2180' FSL, 640' FWL, SEC. 6	RINN VALLEY WEST N18-20-2C TO BE AT 2180' FSL, 480' FEL, SEC. 6
RINN VALLEY WEST N18-20-13C TO BE AT 2180' FSL, 960' FWL, SEC. 6	RINN VALLEY WEST N18-20-1N TO BE AT 2180' FSL, 160' FEL, SEC. 6
RINN VALLEY WEST N18-20-12N TO BE AT 2180' FSL, 1440' FWL, SEC. 6	RINN VALLEY EAST N17-20-16N TO BE AT 460' FNL, 160' FWL, SEC. 8
RINN VALLEY WEST N18-20-11C TO BE AT 2180' FSL, 1920' FWL, SEC. 6	RINN VALLEY EAST N17-20-15C TO BE AT 460' FNL, 480' FWL, SEC. 8
RINN VALLEY WEST N18-20-10N TO BE AT 2180' FSL, 2240' FWL, SEC. 6	RINN VALLEY EAST N17-20-14N TO BE AT 460' FNL, 960' FWL, SEC. 8
RINN VALLEY WEST N18-20-9N TO BE AT 2180' FSL, 2560' FWL, SEC. 6	RINN VALLEY EAST N17-20-13C TO BE AT 460' FNL, 1440' FWL, SEC. 8
RINN VALLEY WEST N18-20-8C TO BE AT 2180' FSL, 2400' FEL, SEC. 6	RINN VALLEY EAST N17-20-12N TO BE AT 460' FNL, 1760' FWL, SEC. 8
RINN VALLEY WEST N18-20-7N TO BE AT 2180' FSL, 2080' FEL, SEC. 6	RINN VALLEY EAST N17-20-11N TO BE AT 460' FNL, 2080' FWL, SEC. 8
RINN VALLEY WEST N18-20-6N TO BE AT 2180' FSL, 1760' FEL, SEC. 6	RINN VALLEY EAST N17-20-10C TO BE AT 460' FNL, 2400' FWL, SEC. 8
RINN VALLEY WEST N18-20-5C TO BE AT 2180' FSL, 1440' FEL, SEC. 6	RINN VALLEY EAST N17-20-9N TO BE AT 460' FNL, 2560' FEL, SEC. 8

LEGEND

- - FOUND/SET SURVEY MONUMENT PER MONUMENT RECORD EXCEPTIONS NOTED.
- - CALCULATED SURVEY MONUMENT POSITION
- (C) - CALCULATED DIMENSION



DRAWN BY
DAM

CHECKED BY
AAD

INITIAL SUBMITTAL	3/9/2018
REVISED	3/15/2018
DRAWING SIZE	8.5" X 11"
JOB NO.	EXT02N68W17-01
SHEET	6 of 6



4007 S. LINCOLN AVENUE, SUITE 405 • LOVELAND, COLORADO 80537
P: 970.353.7800 • F: 970.353.7801 • www.baselinecorp.com

LAT/LONG CONTROL EXHIBIT RINN VALLEY WEST PAD

SE 1/4 SE 1/4 SECTION 18, TOWNSHIP 2 NORTH, RANGE 68 WEST, 6TH P.M.

WELL BORES
CONTINUE INTO
SECTION 7
(SHEET 2)

40.145580°N
105.055353°W
NW COR. SEC. 18
FOUND 2" A.C.
PLS 20673

40.138315°N
105.055373°W
W 1/4 COR. SEC. 18
FOUND #6 REB.
W/ 2.5" A.C.
PLS 38175

SW COR. SEC. 18
FOUND #6 REB.
W/ 2" A.C.
PLS 14070
40.131043°N
105.055364°W

N 1/4 COR. SEC. 18
FOUND #6 REB.
W/ 2.5" A.C.
PLS 25379

40.145749°N
105.046058°W

C 1/4 COR. SEC. 18
FOUND #6 REB.
W/ 2.5" A.C.
PLS 25379

40.138507°N
105.046079°W

S 1/4 COR. SEC. 18
FOUND #6 REB.
W/ 2.5" A.C.
ILLEGIBLE
40.131293°N
105.046099°W

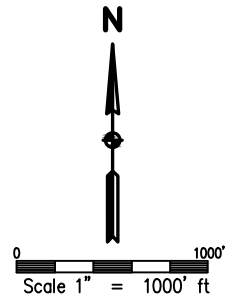
SE COR. SEC. 18
(CALCULATED FROM
SURVEY RECORDS)
40.131546°N
105.036667°W

40.145854°N
105.036579°W
NE COR. SEC. 18
FOUND #6 REB.
W/ 2.5" A.C.
PLS 38414

40.138700°N
105.036676°W
E 1/4 COR. SEC. 18
FOUND #6 REB.
W/ 2.5" A.C.
PLS 23501

WELL BORES
CONTINUE INTO
SECTION 17
(SHEET 4)

30' WITNESS CORNER
FOUND #6 REB.
W/ 2.5" A.C.
PLS 38345



LEGEND

- - FOUND/SET SURVEY MONUMENT PER MONUMENT RECORD EXCEPTIONS NOTED.
- - CALCULATED SURVEY MONUMENT POSITION
- (C) - CALCULATED DIMENSION



DRAWN BY	CHECKED BY
DAM	AAD
INITIAL SUBMITTAL	3/9/2018
REVISED	3/15/2018
DRAWING SIZE	8.5" X 11"
JOB NO.	EXT02N68W17-01
SHEET	1 of 7

BASELINE

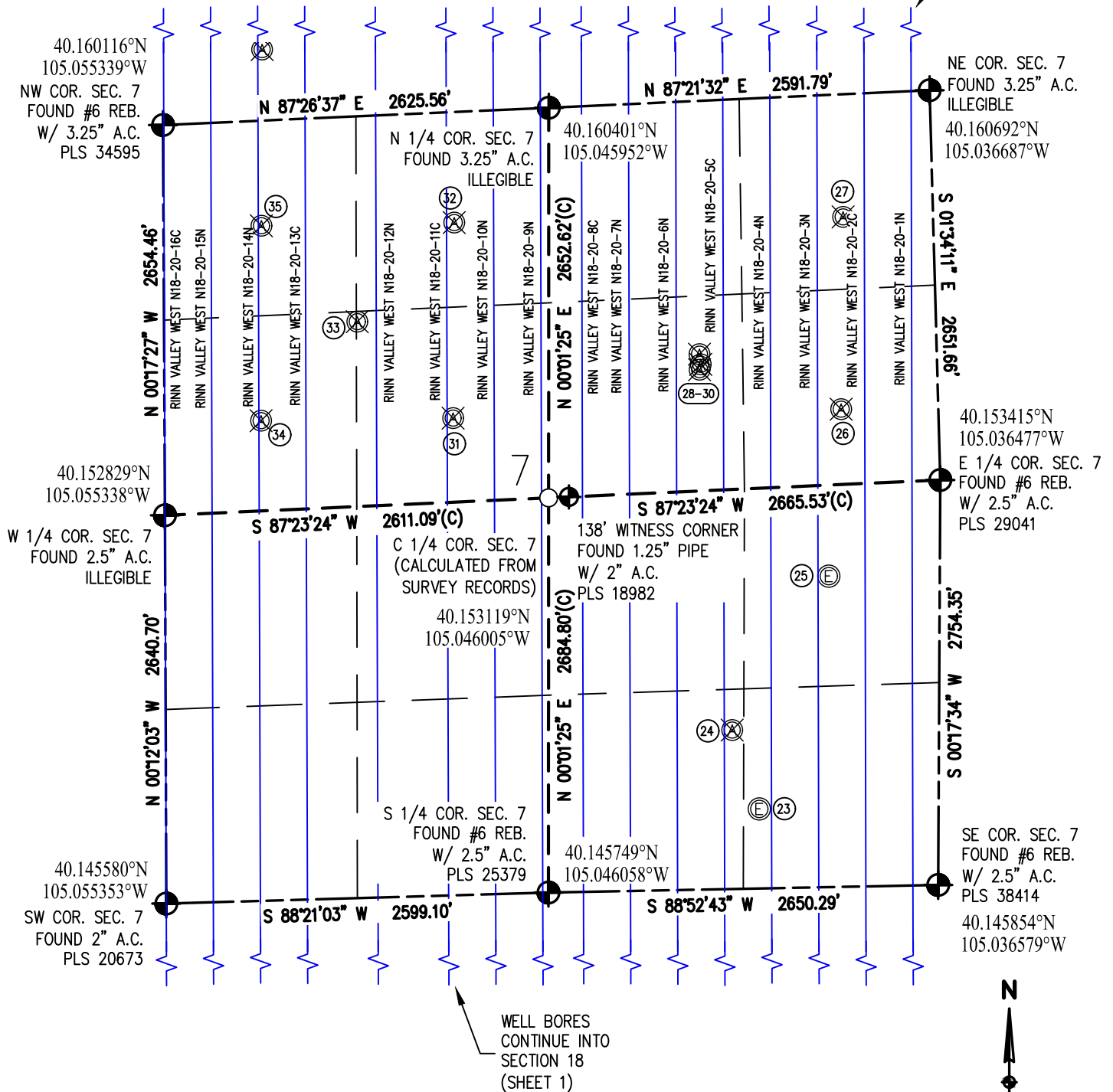
Engineering - Planning - Surveying

4007 S. LINCOLN AVENUE, SUITE 405 • LOVELAND, COLORADO 80537
P: 970.353.7800 • F: 970.353.7801 • www.baselinesurvey.com

LAT/LONG CONTROL EXHIBIT RINN VALLEY WEST PAD

SE 1/4 SE 1/4 SECTION 18, TOWNSHIP 2 NORTH, RANGE 68 WEST, 6TH P.M.

WELL BORES
CONTINUE INTO
SECTION 6
(SHEET 3)



LEGEND

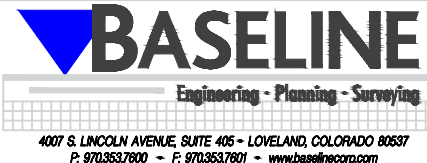
- - FOUND/SET SURVEY MONUMENT PER MONUMENT RECORD EXCEPTIONS NOTED.
- - CALCULATED SURVEY MONUMENT POSITION
- (C) - CALCULATED DIMENSION



DRAWN BY
DAM

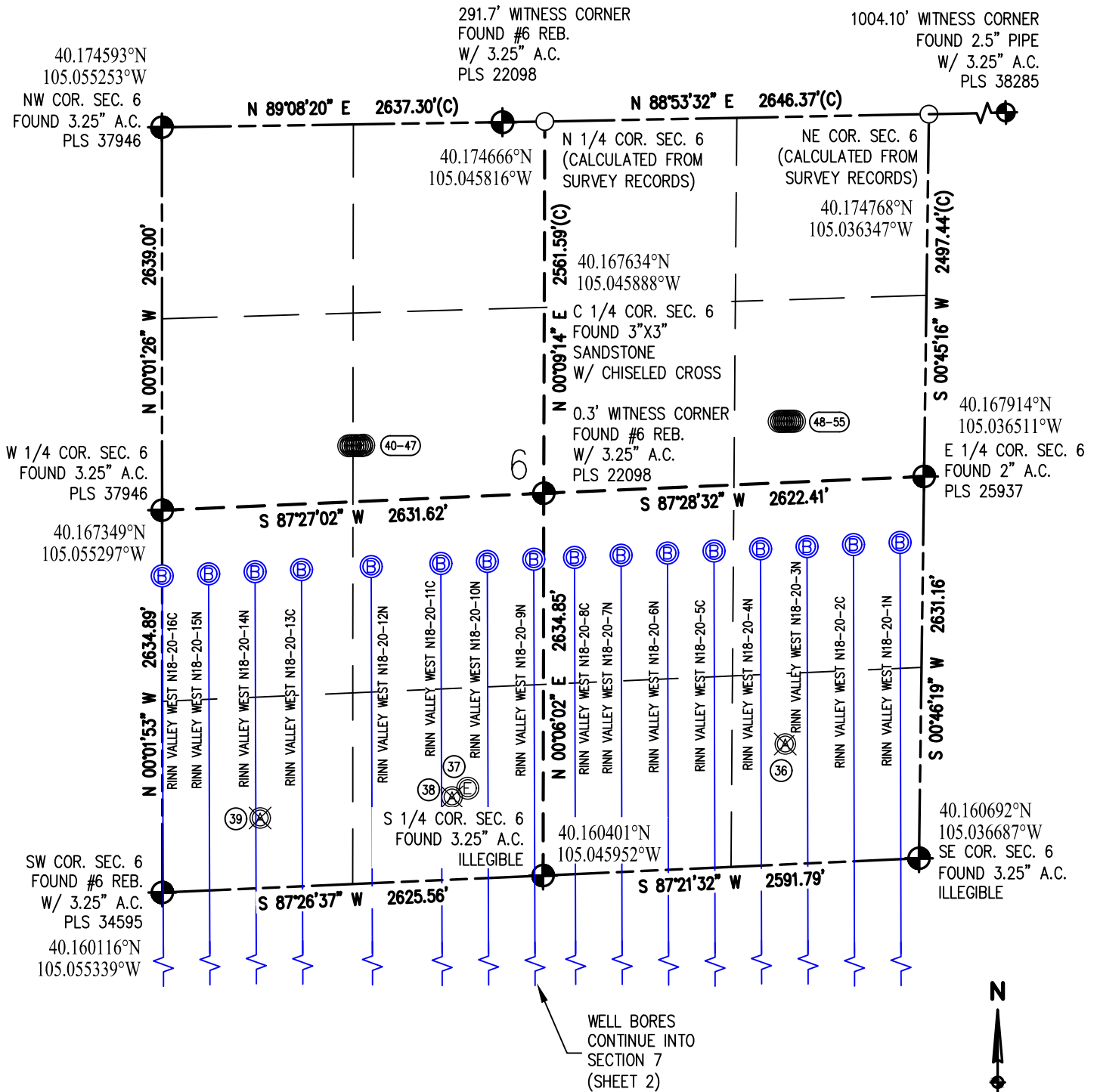
CHECKED BY
AAD

INITIAL SUBMITTAL 3/9/2018
REVISED 3/15/2018
DRAWING SIZE 8.5" X 11"
JOB NO. EXT02N68W17-01
SHEET 2 OF 7



LAT/LONG CONTROL EXHIBIT RINN VALLEY WEST PAD

SE1/4 SE1/4 SECTION 18, TOWNSHIP 2 NORTH, RANGE 68 WEST, 6TH P.M.



LEGEND

- - FOUND/SET SURVEY MONUMENT PER MONUMENT RECORD EXCEPTIONS NOTED.
- - CALCULATED SURVEY MONUMENT POSITION
- (C) - CALCULATED DIMENSION



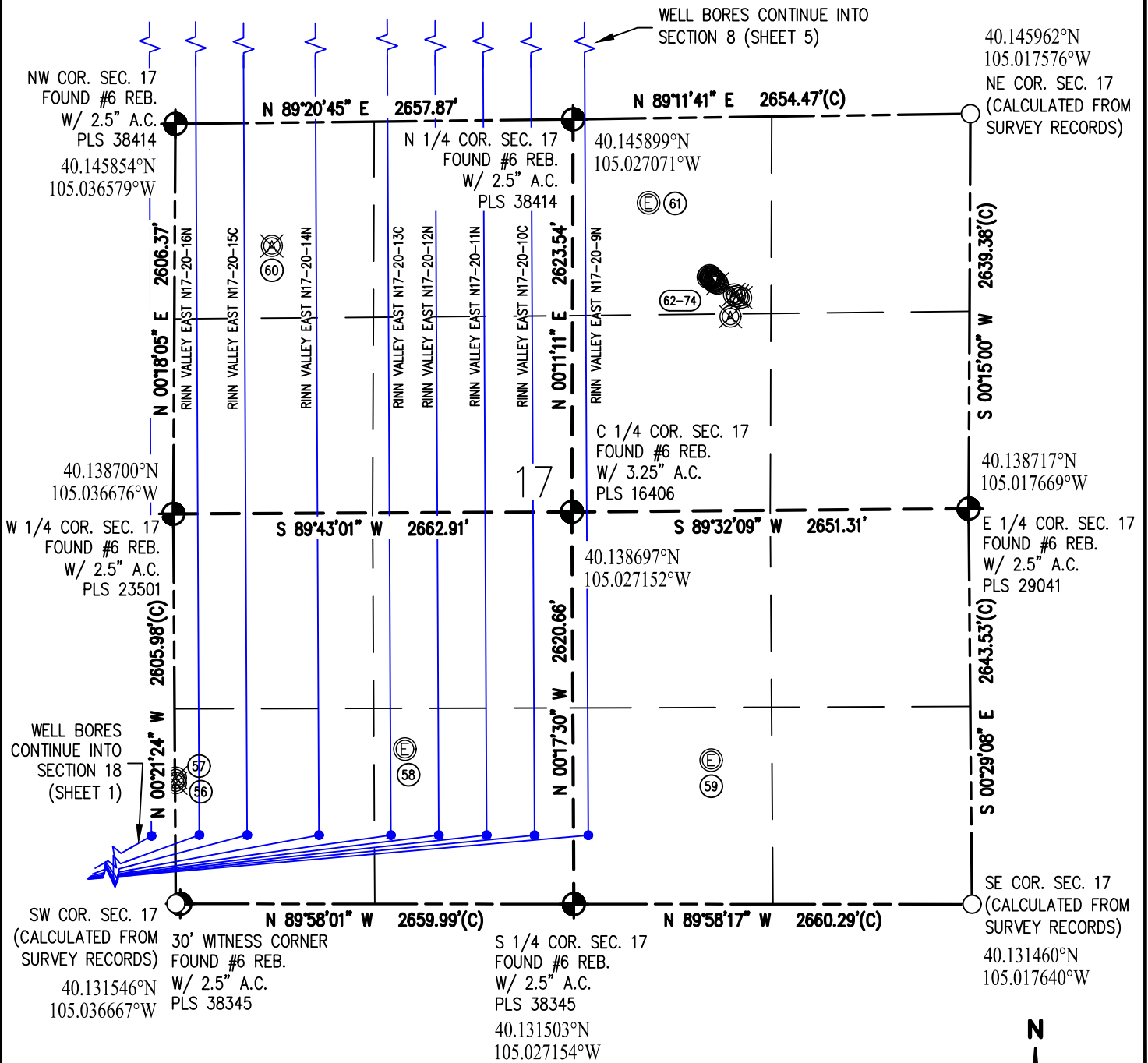
DRAWN BY	CHECKED BY
DAM	AAD
INITIAL SUBMITTAL	3/9/2018
REVISED	3/15/2018
DRAWING SIZE	8.5" X 11"
JOB NO.	EXT02N68W17-01
SHEET	3 of 7

BASELINE
Engineering - Planning - Surveying

4007 S. LINCOLN AVENUE, SUITE 405 • LOVELAND, COLORADO 80537
P: 970.353.7800 • F: 970.353.7801 • www.baselinecorp.com

LAT/LONG CONTROL EXHIBIT RINN VALLEY WEST PAD

SE 1/4 SE 1/4 SECTION 18, TOWNSHIP 2 NORTH, RANGE 68 WEST, 6TH P.M.



LEGEND

- - FOUND/SET SURVEY MONUMENT PER MONUMENT RECORD EXCEPTIONS NOTED.
- - CALCULATED SURVEY MONUMENT POSITION
- (C) - CALCULATED DIMENSION



DRAWN BY
DAM

CHECKED BY
AAD

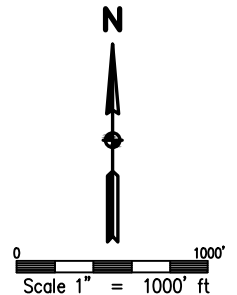
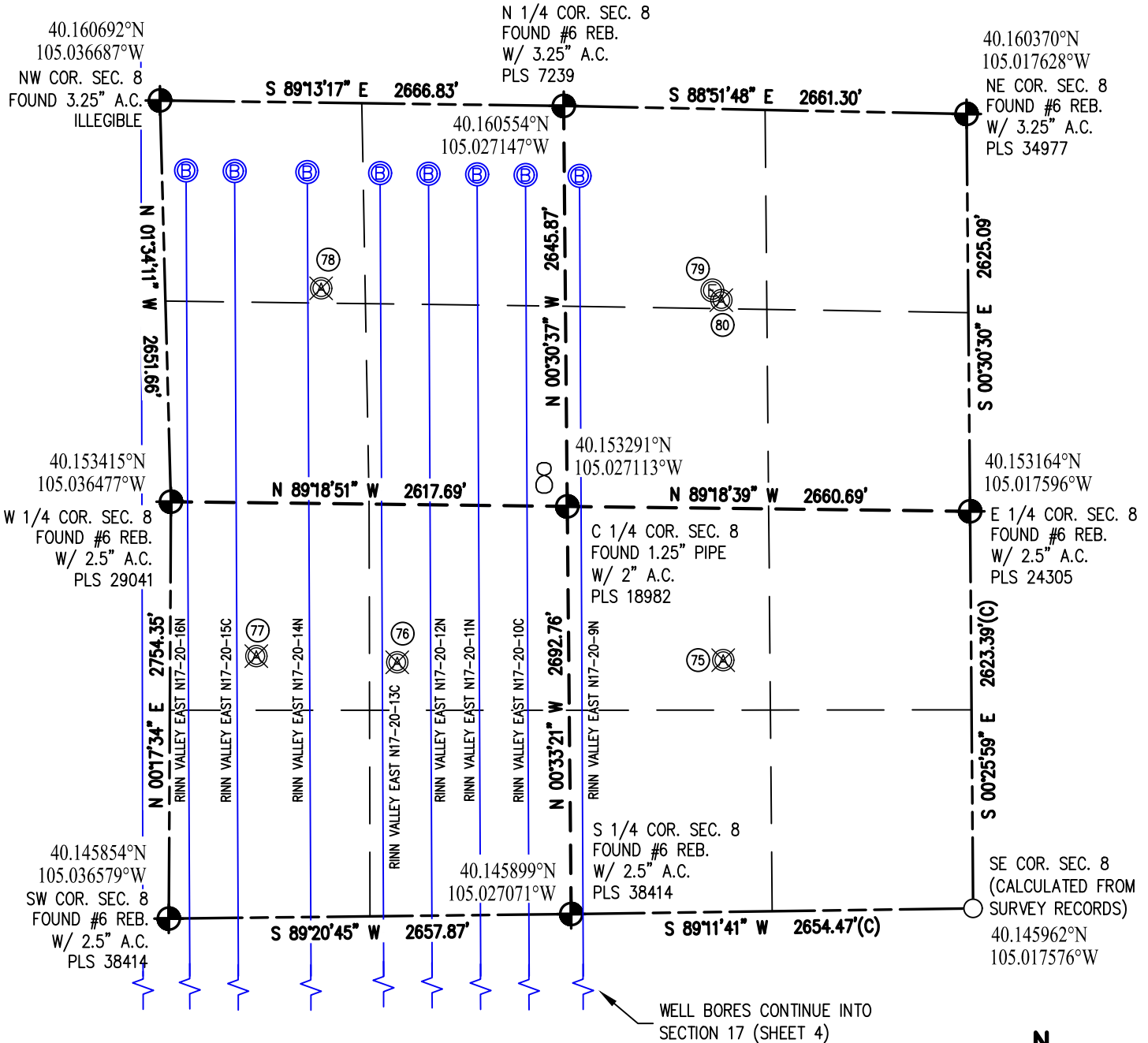
INITIAL SUBMITTAL	3/9/2018
REVISED	3/15/2018
DRAWING SIZE	8.5" X 11"
JOB NO.	EXT02N68W17-01
SHEET	4 OF 7



4007 S. LINCOLN AVENUE, SUITE 405 • LOVELAND, COLORADO 80537
P: 970.353.7800 • F: 970.353.7801 • www.baselinecorp.com

LAT/LONG CONTROL EXHIBIT RINN VALLEY WEST PAD

SE 1/4 SE 1/4 SECTION 8, TOWNSHIP 2 NORTH, RANGE 68 WEST, 6TH P.M.



LEGEND

- - FOUND/SET SURVEY MONUMENT PER MONUMENT RECORD EXCEPTIONS NOTED.
- - CALCULATED SURVEY MONUMENT POSITION
- (C) - CALCULATED DIMENSION



DRAWN BY
DAM

CHECKED BY
AAD

INITIAL SUBMITTAL	3/9/2018
REVISED	3/15/2018
DRAWING SIZE	8.5" X 11"
JOB NO.	EXT02N68W17-01
SHEET	5 of 7

BASELINE
Engineering - Planning - Surveying

4007 S. LINCOLN AVENUE, SUITE 405 • LOVELAND, COLORADO 80537
P: 970.353.7800 • F: 970.353.7801 • www.baselinecorp.com

LAT/LONG CONTROL EXHIBIT RINN VALLEY WEST PAD

SE1/4 SE1/4 SECTION 18, TOWNSHIP 2 NORTH, RANGE 68 WEST, 6TH P.M.

RINN VALLEY WEST N18-20-16C		
SURFACE HOLE	ENTRY POINT	BOTTOM HOLE
219' FSL, 1065' FEL	2180' FNL, 0' FWL	2180' FSL, 0' FWL
LATITUDE: 40.132044	LATITUDE: 40.139594	LATITUDE: 40.166106
LONGITUDE: -105.040477	LONGITUDE: -105.055369	LONGITUDE: -105.055304

RINN VALLEY WEST N18-20-4N		
SURFACE HOLE	ENTRY POINT	BOTTOM HOLE
207' FSL, 729' FEL	460' FSL, 1120' FEL	2180' FSL, 1120' FEL
LATITUDE: 40.132044	LATITUDE: 40.132702	LATITUDE: 40.166560
LONGITUDE: -105.039275	LONGITUDE: -105.040674	LONGITUDE: -105.040552

RINN VALLEY WEST N18-20-15N		
SURFACE HOLE	ENTRY POINT	BOTTOM HOLE
218' FSL, 1037' FEL	2180' FNL, 320' FWL	2180' FSL, 320' FWL
LATITUDE: 40.132044	LATITUDE: 40.139615	LATITUDE: 40.166141
LONGITUDE: -105.040377	LONGITUDE: -105.054224	LONGITUDE: -105.054159

RINN VALLEY WEST N18-20-3N		
SURFACE HOLE	ENTRY POINT	BOTTOM HOLE
206' FSL, 701' FEL	460' FSL, 800' FEL	2180' FSL, 800' FEL
LATITUDE: 40.132044	LATITUDE: 40.132732	LATITUDE: 40.166596
LONGITUDE: -105.039175	LONGITUDE: -105.039530	LONGITUDE: -105.039406

RINN VALLEY WEST N18-20-14N		
SURFACE HOLE	ENTRY POINT	BOTTOM HOLE
217' FSL, 1009' FEL	2180' FNL, 640' FWL	2180' FSL, 640' FWL
LATITUDE: 40.132044	LATITUDE: 40.139635	LATITUDE: 40.166176
LONGITUDE: -105.040277	LONGITUDE: -105.053080	LONGITUDE: -105.053014

RINN VALLEY WEST N18-20-2C		
SURFACE HOLE	ENTRY POINT	BOTTOM HOLE
205' FSL, 673' FEL	460' FSL, 480' FEL	2180' FSL, 480' FEL
LATITUDE: 40.132044	LATITUDE: 40.132763	LATITUDE: 40.166632
LONGITUDE: -105.039075	LONGITUDE: -105.038385	LONGITUDE: -105.038260

RINN VALLEY WEST N18-20-13C		
SURFACE HOLE	ENTRY POINT	BOTTOM HOLE
216' FSL, 981' FEL	2180' FNL, 960' FWL	2180' FSL, 960' FWL
LATITUDE: 40.132044	LATITUDE: 40.139656	LATITUDE: 40.166211
LONGITUDE: -105.040176	LONGITUDE: -105.051935	LONGITUDE: -105.051868

RINN VALLEY WEST N18-20-1N		
SURFACE HOLE	ENTRY POINT	BOTTOM HOLE
204' FSL, 645' FEL	460' FSL, 160' FEL	2180' FSL, 160' FEL
LATITUDE: 40.132044	LATITUDE: 40.132794	LATITUDE: 40.166668
LONGITUDE: -105.038975	LONGITUDE: -105.037241	LONGITUDE: -105.037114

RINN VALLEY WEST N18-20-12N		
SURFACE HOLE	ENTRY POINT	BOTTOM HOLE
215' FSL, 953' FEL	2180' FNL, 1440' FWL	2180' FSL, 1440' FWL
LATITUDE: 40.132044	LATITUDE: 40.139688	LATITUDE: 40.166263
LONGITUDE: -105.040076	LONGITUDE: -105.050218	LONGITUDE: -105.050151

RINN VALLEY EAST N17-20-16N		
SURFACE HOLE	ENTRY POINT	BOTTOM HOLE
203' FSL, 617' FEL	460' FSL, 160' FWL	460' FNL, 160' FWL
LATITUDE: 40.132044	LATITUDE: 40.132806	LATITUDE: 40.159420
LONGITUDE: -105.038875	LONGITUDE: -105.036096	LONGITUDE: -105.036078

RINN VALLEY WEST N18-20-11C		
SURFACE HOLE	ENTRY POINT	BOTTOM HOLE
214' FSL, 925' FEL	2180' FNL, 1920' FWL	2180' FSL, 1920' FWL
LATITUDE: 40.132044	LATITUDE: 40.139719	LATITUDE: 40.166315
LONGITUDE: -105.039976	LONGITUDE: -105.048501	LONGITUDE: -105.048433

RINN VALLEY EAST N17-20-15C		
SURFACE HOLE	ENTRY POINT	BOTTOM HOLE
202' FSL, 589' FEL	460' FSL, 480' FWL	460' FNL, 480' FWL
LATITUDE: 40.132044	LATITUDE: 40.132801	LATITUDE: 40.159404
LONGITUDE: -105.038775	LONGITUDE: -105.034952	LONGITUDE: -105.034932

RINN VALLEY WEST N18-20-10N		
SURFACE HOLE	ENTRY POINT	BOTTOM HOLE
213' FSL, 897' FEL	2180' FNL, 2240' FWL	2180' FSL, 2240' FWL
LATITUDE: 40.132044	LATITUDE: 40.139740	LATITUDE: 40.166350
LONGITUDE: -105.039876	LONGITUDE: -105.047357	LONGITUDE: -105.047287

RINN VALLEY EAST N17-20-14N		
SURFACE HOLE	ENTRY POINT	BOTTOM HOLE
201' FSL, 561' FEL	460' FSL, 960' FWL	460' FNL, 960' FWL
LATITUDE: 40.132044	LATITUDE: 40.132793	LATITUDE: 40.159379
LONGITUDE: -105.038674	LONGITUDE: -105.033235	LONGITUDE: -105.033213

RINN VALLEY WEST N18-20-9N		
SURFACE HOLE	ENTRY POINT	BOTTOM HOLE
212' FSL, 869' FEL	2180' FNL, 2560' FWL	2180' FSL, 2560' FWL
LATITUDE: 40.132044	LATITUDE: 40.139760	LATITUDE: 40.166384
LONGITUDE: -105.039776	LONGITUDE: -105.046212	LONGITUDE: -105.046142

RINN VALLEY EAST N17-20-13C		
SURFACE HOLE	ENTRY POINT	BOTTOM HOLE
200' FSL, 533' FEL	460' FSL, 1440' FWL	460' FNL, 1440' FWL
LATITUDE: 40.132044	LATITUDE: 40.132786	LATITUDE: 40.159354
LONGITUDE: -105.038574	LONGITUDE: -105.031518	LONGITUDE: -105.031495

RINN VALLEY WEST N18-20-8C		
SURFACE HOLE	ENTRY POINT	BOTTOM HOLE
211' FSL, 841' FEL	460' FSL, 2400' FEL	2180' FSL, 2400' FEL
LATITUDE: 40.132044	LATITUDE: 40.132579	LATITUDE: 40.166416
LONGITUDE: -105.039676	LONGITUDE: -105.045252	LONGITUDE: -105.045137

RINN VALLEY EAST N17-20-12N		
SURFACE HOLE	ENTRY POINT	BOTTOM HOLE
199' FSL, 505' FEL	460' FSL, 1760' FWL	460' FNL, 1760' FWL
LATITUDE: 40.132044	LATITUDE: 40.132780	LATITUDE: 40.159337
LONGITUDE: -105.038474	LONGITUDE: -105.030374	LONGITUDE: -105.030349

RINN VALLEY WEST N18-20-7N		
SURFACE HOLE	ENTRY POINT	BOTTOM HOLE
210' FSL, 813' FEL	460' FSL, 2080' FEL	2180' FSL, 2080' FEL
LATITUDE: 40.132044	LATITUDE: 40.132609	LATITUDE: 40.166452
LONGITUDE: -105.039576	LONGITUDE: -105.044107	LONGITUDE: -105.043991

RINN VALLEY EAST N17-20-11N		
SURFACE HOLE	ENTRY POINT	BOTTOM HOLE
198' FSL, 477' FEL	460' FSL, 2080' FWL	460' FNL, 2080' FWL
LATITUDE: 40.132044	LATITUDE: 40.132775	LATITUDE: 40.159321
LONGITUDE: -105.038374	LONGITUDE: -105.029230	LONGITUDE: -105.029204

RINN VALLEY WEST N18-20-6N		
SURFACE HOLE	ENTRY POINT	BOTTOM HOLE
209' FSL, 785' FEL	460' FSL, 1760' FEL	2180' FSL, 1760' FEL
LATITUDE: 40.132044	LATITUDE: 40.132640	LATITUDE: 40.166488
LONGITUDE: -105.039475	LONGITUDE: -105.042963	LONGITUDE: -105.042844

RINN VALLEY EAST N17-20-10C		
SURFACE HOLE	ENTRY POINT	BOTTOM HOLE
197' FSL, 449' FEL	460' FSL, 2400' FWL	460' FNL, 2400' FWL
LATITUDE: 40.132043	LATITUDE: 40.132770	LATITUDE: 40.159304
LONGITUDE: -105.038274	LONGITUDE: -105.028085	LONGITUDE: -105.028058

RINN VALLEY WEST N18-20-5C		
SURFACE HOLE	ENTRY POINT	BOTTOM HOLE
208' FSL, 757' FEL	460' FSL, 1440' FEL	2180' FSL, 1440' FEL
LATITUDE: 40.132044	LATITUDE: 40.132671	LATITUDE: 40.166524
LONGITUDE: -105.039375	LONGITUDE: -105.041818	LONGITUDE: -105.041698

RINN VALLEY EAST N17-20-9N		
SURFACE HOLE	ENTRY POINT	BOTTOM HOLE
196' FSL, 421' FEL	460' FSL, 2560' FEL	460' FNL, 2560' FEL
LATITUDE: 40.132043	LATITUDE: 40.132764	LATITUDE: 40.159284
LONGITUDE: -105.038174	LONGITUDE: -105.026801	LONGITUDE: -105.026783

LEGEND

- - FOUND/SET SURVEY MONUMENT PER MONUMENT RECORD EXCEPTIONS NOTED.
- - CALCULATED SURVEY MONUMENT POSITION
- (C) - CALCULATED DIMENSION



DRAWN BY	CHECKED BY
DAM	AAD
INITIAL SUBMITTAL	3/9/2018
REVISED	3/15/2018
DRAWING SIZE	8.5" X 11"
JOB NO.	EXT02N68W17-01
SHEET	6 of 7

BASELINE
Engineering - Planning - Surveying

4007 S. LINCOLN AVENUE, SUITE 405 • LOVELAND, COLORADO 80537
P: 970.363.7800 • F: 970.363.7801 • www.baselinescorp.com

LAT/LONG CONTROL EXHIBIT
RINN VALLEY WEST PAD

SE1/4 SE1/4 SECTION 18, TOWNSHIP 2 NORTH, RANGE 68 WEST, 6TH P.M.

NOTES:

1. WILLIAMS 6-4-18 128' E OF RINN VALLEY WEST N18-20-4N
2. WILLIAMS 8-6-18 128' E OF RINN VALLEY WEST N18-20-4N
3. WILLIAMS 18-16 128' E OF RINN VALLEY WEST N18-20-4N
4. WILLIAMS 4-6-18 128' E OF RINN VALLEY WEST N18-20-4N
5. WILLIAMS 8-8-18 128' E OF RINN VALLEY WEST N18-20-4N
6. WILLIAMS 34-18 86' E OF RINN VALLEY WEST N18-20-7N
7. WILLIAMS 43-18 135' E OF RINN VALLEY WEST N18-20-3N
8. WILLIAMS 33-18 117' E OF RINN VALLEY WEST N18-20-7N
9. WILLIAMS 34-18 116' E OF RINN VALLEY WEST N18-20-7N
10. WILLIAMS 23-18 46' NE OF RINN VALLEY WEST N18-20-13C
11. WILLIAMS 24-18 884' W OF RINN VALLEY WEST N18-20-8C
12. WILLIAMS 14-18 1778' SW OF RINN VALLEY WEST N18-20-16C
13. WILLIAMS 2-4-18 982' SW OF RINN VALLEY WEST N18-20-16C
14. WILLIAMS 4-8-18 973' SW OF RINN VALLEY WEST N18-20-16C
15. WILLIAMS 2-8-18 963' SW OF RINN VALLEY WEST N18-20-16C
16. WILLIAMS 3A-18H 957' SW OF RINN VALLEY WEST N18-20-16C
17. WILLIAMS E UNIT 1 920' SW OF RINN VALLEY WEST N18-20-16C
18. WILLIAMS 13-18 567' SW OF RINN VALLEY WEST N18-20-16C
19. SERAFINI GAS UNIT 1 123' E OF RINN VALLEY WEST N18-20-4N
20. CITY OF LONGMONT 1 92' E OF RINN VALLEY WEST N18-20-7N
21. SHERWOOD 1 5' E OF RINN VALLEY WEST N18-20-11C
22. SHERWOOD 2 6' E OF RINN VALLEY WEST N18-20-11C
23. POWELL 1 83' W OF RINN VALLEY WEST N18-20-4N
24. EVANS 7 54' E OF RINN VALLEY WEST N18-20-5C
25. EVANS 6 73' E OF RINN VALLEY WEST N18-20-3N
26. EVANS 3 160' E OF RINN VALLEY WEST N18-20-3N
27. EVANS 1 145' W OF RINN VALLEY WEST N18-20-2C
28. EVANS 5 158' E OF RINN VALLEY WEST N18-20-6N
29. EVANS 4 154' W OF RINN VALLEY WEST N18-20-5C
30. EVANS 2 158' E OF RINN VALLEY WEST N18-20-6N
31. MAYEDA 6 40' E OF RINN VALLEY WEST N18-20-11C
32. MAYEDA 4 52' E OF RINN VALLEY WEST N18-20-11C
33. MAYEDA 7 129' W OF RINN VALLEY WEST N18-20-12N
34. MAYEDA 5 15' E OF RINN VALLEY WEST N18-20-14N
35. MAYEDA 3 21' E OF RINN VALLEY WEST N18-20-14N
36. NORTON 1 153' W OF RINN VALLEY WEST N18-20-3N
37. MAYEDA JOHN Y 2 140' W OF RINN VALLEY WEST N18-20-10N
38. MAYEDA 1 72' E OF RINN VALLEY WEST N18-20-11C
39. MAYEDA JOHN Y 3 30' E OF RINN VALLEY WEST N18-20-14N
40. LOWER ADRIAN 3 847' N OF RINN VALLEY WEST N18-20-12N
41. LOWER ADRIAN 4 844' N OF RINN VALLEY WEST N18-20-12N
42. LOWER ADRIAN 5 842' N OF RINN VALLEY WEST N18-20-12N
43. LOWER ADRIAN 6 840' N OF RINN VALLEY WEST N18-20-12N
44. LOWER ADRIAN 7 838' N OF RINN VALLEY WEST N18-20-12N
45. LOWER ADRIAN 8 837' N OF RINN VALLEY WEST N18-20-12N
46. LOWER ADRIAN 9 835' N OF RINN VALLEY WEST N18-20-12N
47. LOWER ADRIAN 10 838' N OF RINN VALLEY WEST N18-20-12N
48. KOESTER 10 885' N OF RINN VALLEY WEST N18-20-3N
49. KOESTER 9 882' N OF RINN VALLEY WEST N18-20-3N
50. KOESTER 8 879' N OF RINN VALLEY WEST N18-20-3N
51. KOESTER 7 877' N OF RINN VALLEY WEST N18-20-3N
52. KOESTER 6 874' N OF RINN VALLEY WEST N18-20-3N
53. KOESTER 5 872' N OF RINN VALLEY WEST N18-20-3N
54. KOESTER 4 870' N OF RINN VALLEY WEST N18-20-3N
55. KOESTER 3 864' N OF RINN VALLEY WEST N18-20-3N
56. SCHLAGEL U 17-62 HN 155' W OF RINN VALLEY EAST N17-20-3N
57. SCHLAGEL U 17-64-1HN 155' W OF RINN VALLEY EAST N17-20-3N
58. SCHLAGEL 1 97' E OF RINN VALLEY EAST N17-20-13C
59. SCHLAGEL 2 823' E OF RINN VALLEY EAST N17-20-9N
60. JEAN CRAIG EVANS 1 183' E OF RINN VALLEY EAST N17-20-15C
61. FILE 31-17 423' E OF RINN VALLEY EAST N17-20-9N
62. FILE 31-17 820' E OF RINN VALLEY EAST N17-20-9N
63. FILE 4-2-17 828' E OF RINN VALLEY EAST N17-20-9N
64. FILE 32-17 835' E OF RINN VALLEY EAST N17-20-9N
65. FILE 6-0-17 841' E OF RINN VALLEY EAST N17-20-9N
66. FILE 41-17 849' E OF RINN VALLEY EAST N17-20-9N
67. FILE 1-17 853' E OF RINN VALLEY EAST N17-20-9N
68. FILE 8-2-17 863' E OF RINN VALLEY EAST N17-20-9N
69. FILE 42-17X 871' E OF RINN VALLEY EAST N17-20-9N
70. FILE 42-17 882' E OF RINN VALLEY EAST N17-20-9N
71. FILE 32-17 991' E OF RINN VALLEY EAST N17-20-9N
72. FILE 1 1013' E OF RINN VALLEY EAST N17-20-9N
73. FILE 42-17 1038' E OF RINN VALLEY EAST N17-20-9N
74. DISTEL 1 967' E OF RINN VALLEY EAST N17-20-9N
75. LONGMONT 8-10K 934' E OF RINN VALLEY EAST N17-20-9N
76. NIWOT 1 98' E OF RINN VALLEY EAST N17-20-13C
77. EVANS 8 129' E OF RINN VALLEY EAST N17-20-15C
78. GREAT WESTERN SUGAR CO 1 88' E OF RINN VALLEY EAST N17-20-14N
79. SAUNDERS TRUST 8-258 874' E OF RINN VALLEY EAST N17-20-9N
80. LONGMONT 1 933' E OF RINN VALLEY EAST N17-20-9N

LEGEND

- ⊕ - FOUND/SET SURVEY MONUMENT PER MONUMENT RECORD EXCEPTIONS NOTED.
- - CALCULATED SURVEY MONUMENT POSITION
- (C) - CALCULATED DIMENSION



DRAWN BY	CHECKED BY
DAM	AAD
INITIAL SUBMITTAL	3/9/2018
REVISED	3/15/2018
DRAWING SIZE	8.5" X 11"
JOB NO.	EXT02N68W17-01
SHEET	7 of 7

BASELINE
Engineering - Planning - Surveying

4007 S. LINCOLN AVENUE, SUITE 405 • LOVELAND, COLORADO 80537
P: 970.353.7800 • F: 970.353.7801 • www.baselinecorp.com