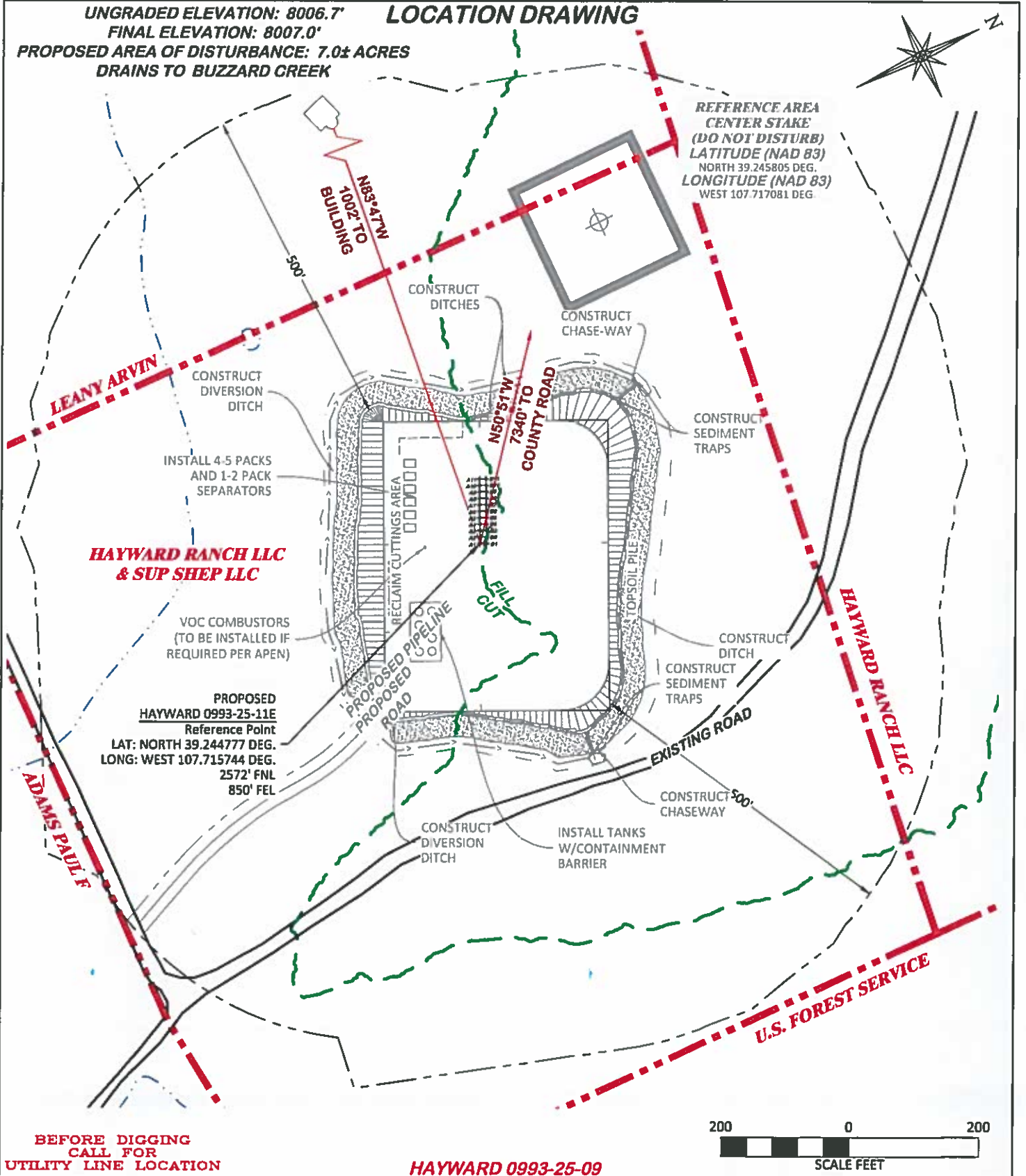


UNGRADED ELEVATION: 8006.7'
 FINAL ELEVATION: 8007.0'
 PROPOSED AREA OF DISTURBANCE: 7.0± ACRES
 DRAINS TO BUZZARD CREEK

LOCATION DRAWING



DRG RIFFIN & ASSOCIATES, INC.
 (307) 362-5028 1414 ELK ST., ROCK SPRINGS, WY 82901

| | |
|--------------------------|-------------------|
| DRAWN: 3/8/2018 - TCM | SCALE: 1" = 200' |
| REVISED: 3/27/2018 - DEH | DRG JOB No. 21279 |
| MISC. CORRECTIONS | LOC DWG |

LOCATION DRAWING

LARAMIE ENERGY, LLC
HAYWARD 0993-25-09
SENE, SECTION 25, T.9 S., R. 93 W., 6th P.M.,
MESA COUNTY, COLORADO