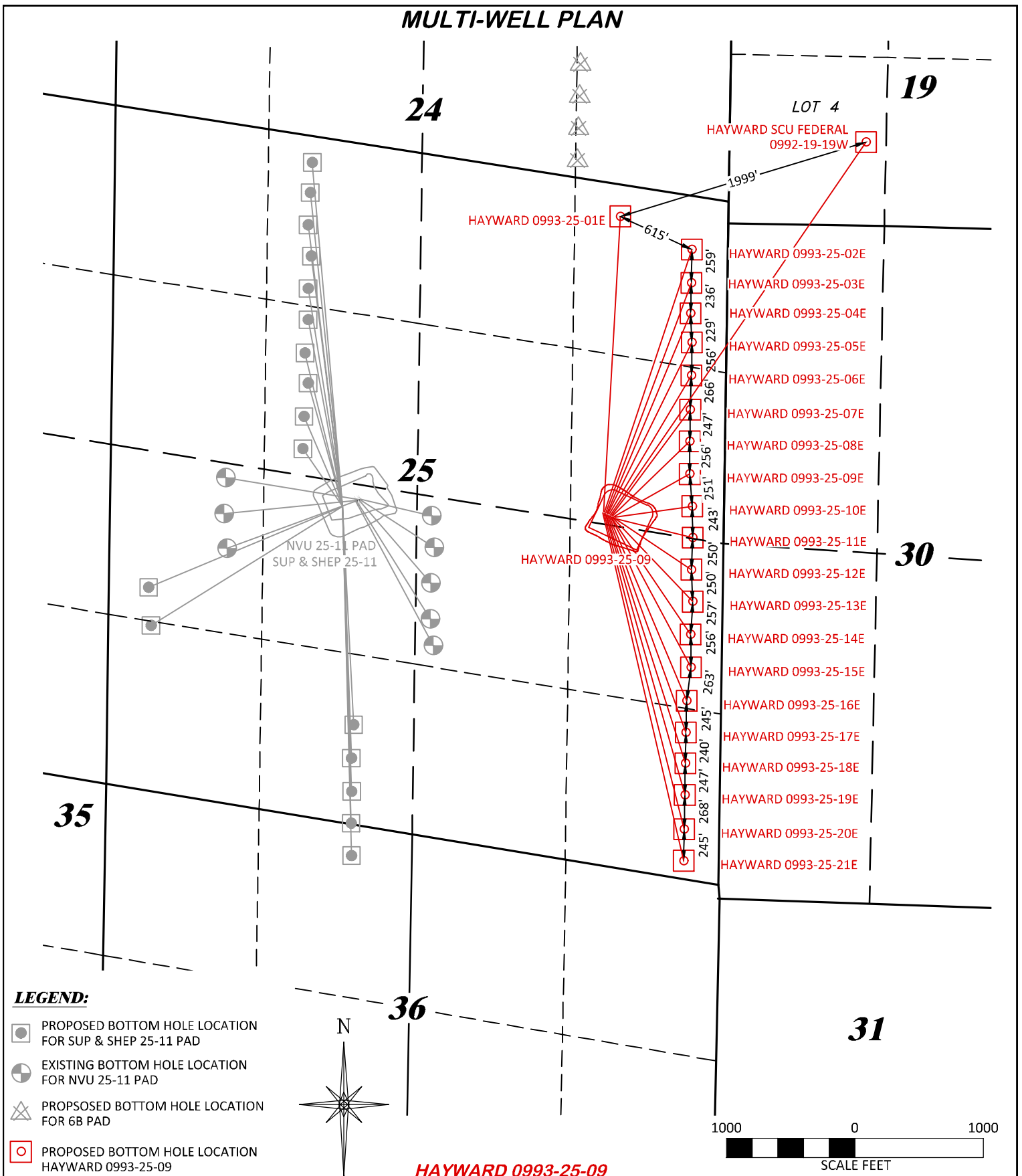


# MULTI-WELL PLAN



MULTI-WELL PLAN		MULTI-WELL PLAN	
<b>DRG RIFFIN &amp; ASSOCIATES, INC.</b> (307) 362-5028 1414 ELK ST., ROCK SPRINGS, WY 82901		<b>LARAMIE ENERGY, LLC</b> <b>HAYWARD 0993-25-09</b> <b>SECTION 25, T. 9 S., R. 93 W., 6th P.M.,</b> <b>MESA COUNTY, COLORADO</b>	
<b>DRAWN: 3/8/2018 - TCM</b>	<b>SCALE: 1" = 1000'</b>	<b>PAD LOCATED IN SENE OF</b> <b>SECTION 25, T. 9 S., R. 93 W., 6th P.M.,</b> <b>MESA COUNTY, COLORADO</b>	
<b>REVISED: N/A -</b>	<b>DRG JOB No. 21279</b>		
	<b>MULTI</b>		