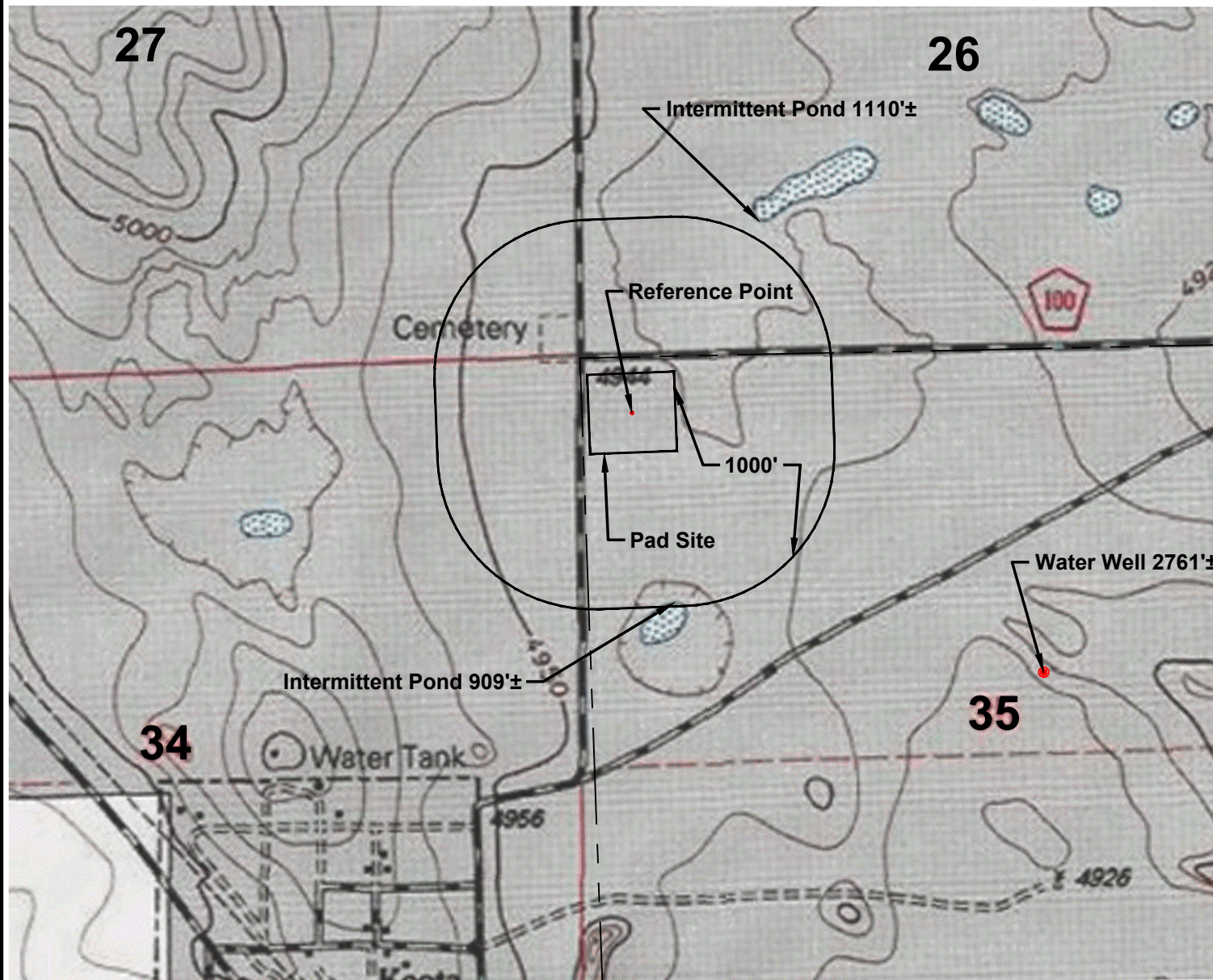


SCALE: 1" = 1000'
0' 500' 1000'

HYDROLOGY MAP

NW 1/4 NW 1/4 SECTION 35
T9N R60W 6TH PM
WELD COUNTY, COLORADO



VERDAD RESOURCES
BOYDSTON 3535

MAPP	April 19, 2018	REVISION:	
SHEET :	1 OF 1	INT	DATE
FILE: F2A_BOYDSTON_3535_HYDRO			

