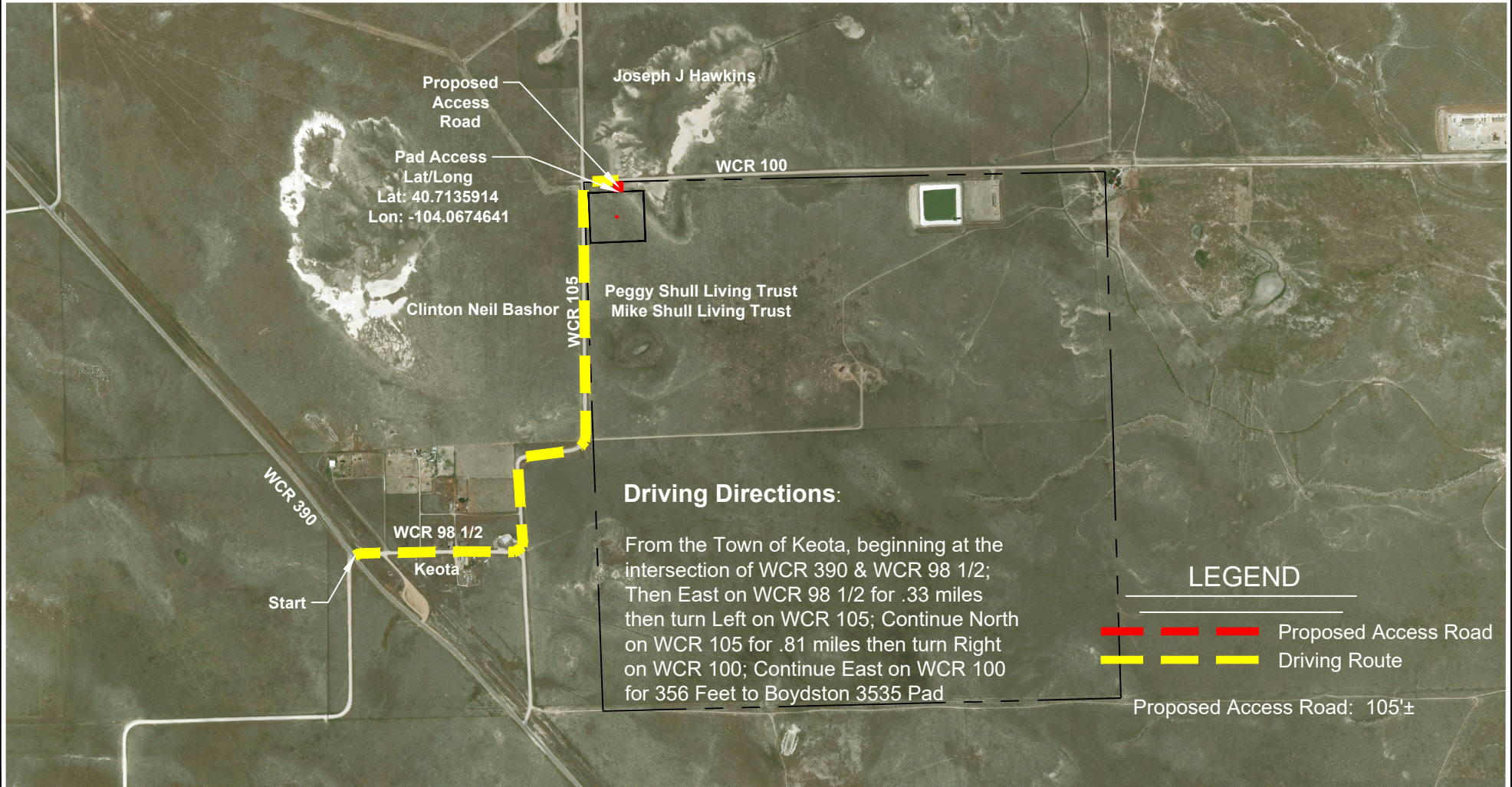


SCALE: 1" = 1500'
 0' 750' 1500'

ACCESS ROAD MAP
 NW 1/4 NW 1/4 SECTION 35
 T9N R60W 6TH PM
 WELD COUNTY, COLORADO



Driving Directions:

From the Town of Keota, beginning at the intersection of WCR 390 & WCR 98 1/2; Then East on WCR 98 1/2 for .33 miles then turn Left on WCR 105; Continue North on WCR 105 for .81 miles then turn Right on WCR 100; Continue East on WCR 100 for 356 Feet to Boydston 3535 Pad

LEGEND

- - - Proposed Access Road
- - - Driving Route

Proposed Access Road: 105'±

VERDAD RESOURCES
 BOYDSTON 3535

April 19, 2018

REVISION:

1 OF 1

INT

DATE

F2A_BOYDSTON_3535_ACCESS



520 Stacy Court Ste B, Lafayette, CO 80026
 303.666.0379 www.topographic.com