

# HALLIBURTON

iCem<sup>®</sup> Service

## **TERRA ENERGY PARTNERS**

**For: Terra**

Date: Wednesday, January 17, 2018

**PA 311-25 Surface PJR**

API #: 05-045-23657

Sincerely,

**Grand Junction Cement Engineering**

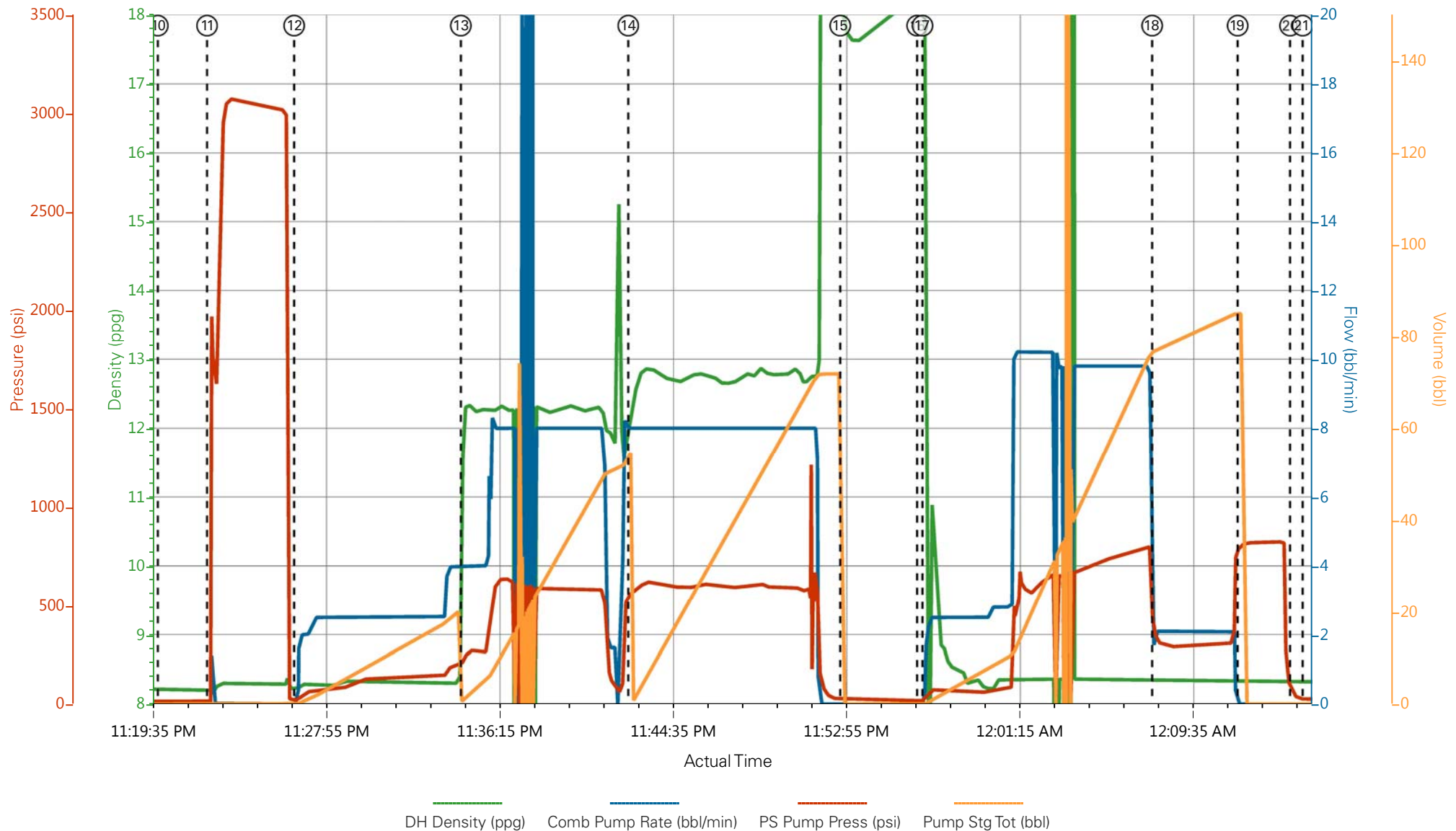
## 2.0 Real-Time Job Summary

## 2.1 Job Event Log

Type	Seq. No.	Graph Label	Date	Time	Source	DH Density (ppg)	Comb Pump Rate (bbl/min)	PS Pump Press (psi)	Pump Stg Tot (bbl)	Comments
Event	1	Call Out	1/16/2018	16:00:00	USER					
Event	2	Pre-Convoy Safety Meeting	1/16/2018	18:00:00	USER					
Event	3	Crew Leave Yard	1/16/2018	18:20:00	USER					
Event	4	Arrive At Loc	1/16/2018	20:00:00	USER					OSR SIGNED WOC
Event	5	Assessment Of Location Safety Meeting	1/16/2018	20:30:00	USER					JSA COMPLETE
Event	6	Pre-Rig Up Safety Meeting	1/16/2018	21:00:00	USER					JSA COMPLETE
Event	7	Rig-Up Equipment	1/16/2018	21:30:00	USER					1 660, 1 ELITE, 1 PICKUP
Event	8	Other	1/16/2018	22:25:00	USER					WATER TEST: PH-7, TEMP-58, CL-0
Event	9	Pre-Job Safety Meeting	1/16/2018	22:30:00	USER					JSA COMPLETE
Event	10	Start Job	1/16/2018	23:20:00	COM5					TP- 1121, TD-1123, S.J.-34.68, HOLE- 13.5, MUD# 9.4
Event	11	Test Lines	1/16/2018	23:22:21	COM5					3075 PSI
Event	12	Pump Spacer 1	1/16/2018	23:26:32	COM5	8.33	4.00	200	20	FRESH WATER
Event	13	Pump Lead Cement	1/16/2018	23:34:33	COM5	12.30	8.00	580	52.9	125 SKS VARICEM 12.3 PPG, 2.38 FT3/SK, 13.77 GAL/SK
Event	14	Pump Tail Cement	1/16/2018	23:42:36	COM5	12.80	8.00	562.00	65.8	175 SKS VARICEM 12.8 PPG, 2.11 FT3/SK, 11.78 GAL/SK, HAD A SHUTDOWN WHILE SWAPPING TO TAIL CMT.

Event	15	Shutdown	1/16/2018	23:52:47	COM5					TO DROP TOP PLUG
Event	16	Drop Top Plug	1/16/2018	23:56:28	COM5					AWAY, USING POSITIVE DISPLACEMENT
Event	17	Pump Displacement	1/16/2018	23:56:44	COM5	8.33	10.00	780	85.5	FRESH WATER, 25 BBLS CMT TO SURFACE
Event	18	SLOW RATE	1/17/2018	00:07:46	COM5	8.33	2.00	296	75	SLOW RATE TO BUMP PLUG
Event	19	Bump Plug	1/17/2018	00:11:52	COM5	8.33	2.00	300	85.5	PLUG BUMPED
Event	20	Check Floats	1/17/2018	00:14:23	USER			805		FLOATS HELD 0.5 BBLS BACK
Event	21	End Job	1/17/2018	00:15:00	USER					GOOD CIRCULATION THROUGHOUT JOB, NO PIPE MOVEMENT, BLEW DOWN IRON FROM RIG FLOOR
Event	22	Post-Job Safety Meeting (Pre Rig-Down)	1/17/2018	00:25:00	USER					JSA COMPLETE
Event	23	Rig Down Lines	1/17/2018	01:00:00	USER					
Event	24	Pre-Convoy Safety Meeting	1/17/2018	01:30:00	USER					
Event	25	Crew Leave Location	1/17/2018	02:00:00	USER					THANK YOU FOR USING HALLIBURTON CEMENT, JAMES LEIST AND CREW

# TEP - PA 311-25- 9 5/8 SURFACE CASING



- |   |                          |                     |   |                        |
|---|--------------------------|---------------------|---|------------------------|
| ① Call Out                              | ⑦ Rig-Up Equipment       | ⑬ Pump Lead Cement  | ⑲ Bump Plug                               | 25 Crew Leave Location |
| ② Pre-Convoy Safety Meeting             | ⑧ Other                  | ⑭ Pump Tail Cement  | 20 Check Floats                           |                        |
| ③ Crew Leave Yard                       | ⑨ Pre-Job Safety Meeting | ⑮ Shutdown          | 21 End Job                                |                        |
| ④ Arrive At Loc                         | ⑩ Start Job              | ⑯ Drop Top Plug     | 22 Post-Job Safety Meeting (Pre Rig-Down) |                        |
| ⑤ Assessment Of Location Safety Meeting | ⑪ Test Lines             | ⑰ Pump Displacement | 23 Rig Down Lines                         |                        |
| ⑥ Pre-Rig Up Safety Meeting             | ⑫ Pump Spacer 1          | ⑱ SLOW RATE         | 24 Pre-Convoy Safety Meeting              |                        |

▼ **HALLIBURTON** | iCem® Service

Created: 2018-01-16 16:55:13, Version: 4.2.393

Edit

Customer : TERRA ENERGY PARTNERS-EBUS

Job Date : 1/16/2018 9:46:52 PM

Well : TRI STATE TRUCKING PA 311-25

Representative : MATT HUTSON

Sales Order # : 904571122

ELITE 1 : WES GOWEN

# TEP - PA 311-25- 9 5/8 SURFACE CASING

