

HALLIBURTON

iCem[®] Service

TERRA ENERGY LTD.

For: Terra Energy

Date: Monday, January 22, 2018

PA 41-26

API: 05-045-23656-00

PA 41-26 Surface

Job Date: Monday, January 22, 2018

Sincerely,

Grand Junction Cement Engineering

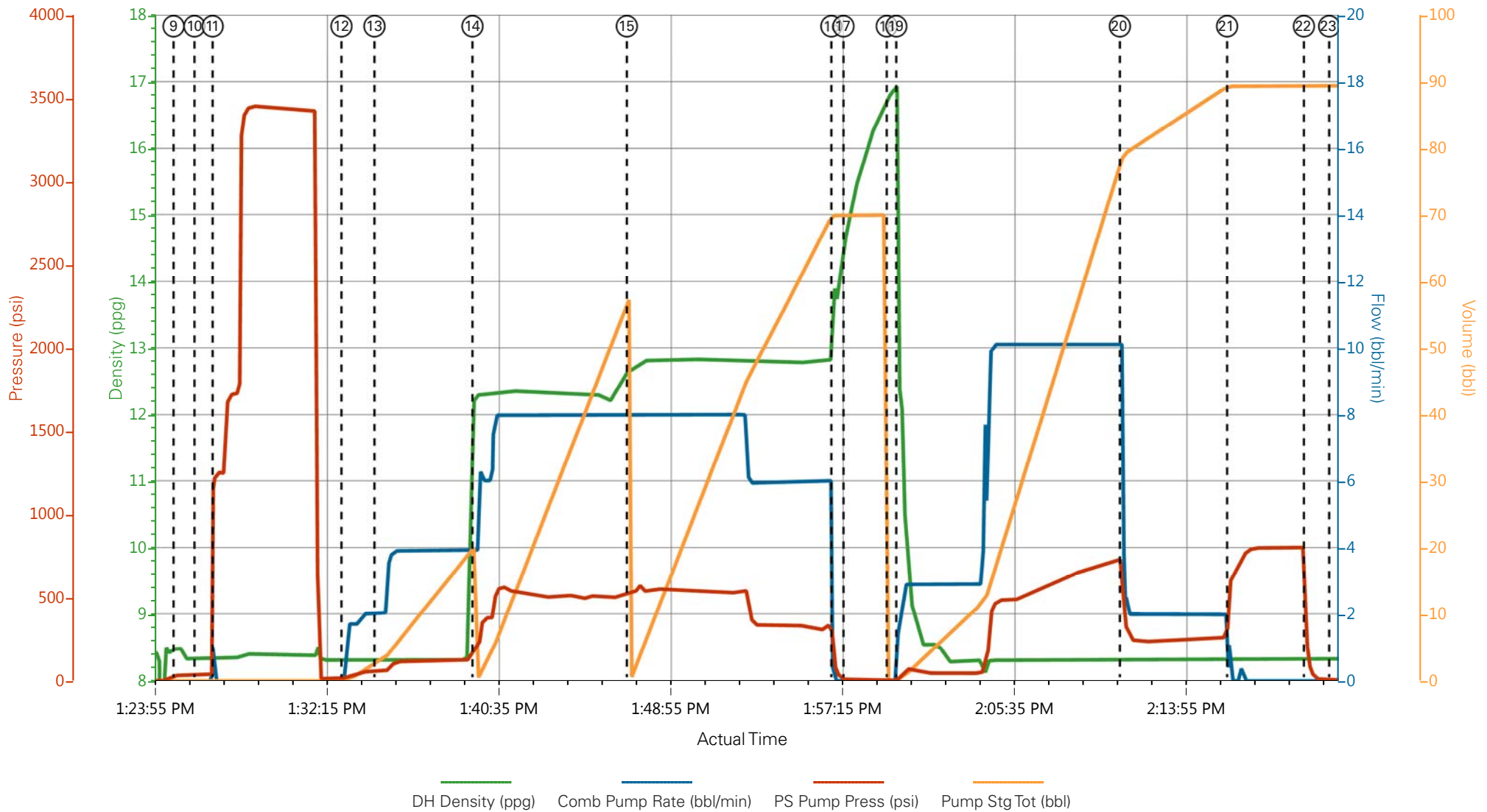
1.0 Real-Time Job Summary

1.1 Job Event Log

Type	Seq. No.	Graph Label	Date	Time	Source	Pass-Side Pump Pressure (psi)	Downhole Density (ppg)	Combined Pump Rate (bbl/min)	Pump Stage Total (bbl)	Comments
Event	1	Call Out	1/22/2018	05:30:00	USER					REQUESTED ON LOCATION @ 1030
Event	2	Pre-Convoy Safety Meeting	1/22/2018	07:30:00	USER					ALL HES PRESENT
Event	3	Crew Leave Yard	1/22/2018	07:35:00	USER					1 F550, 1 PUMP TRUCK & 1 660 BULK TURCK
Event	4	Arrive At Loc	1/22/2018	09:00:00	USER					RIG RUNNING CASING
Event	5	Assessment Of Location Safety Meeting	1/22/2018	09:30:00	USER					MET WITH COMP REP AND WENT OVER NUMBERS AND JOB PROCEDURE. WALKED AROUND LOCATION AND COLLECTED WATER SAMPLE (PH- 7, CHLORIDES-100, TEMP- 63F). COMP REP WAS OFFERED SDS FOR ALL CHEMICLES USED BY HES.
Event	6	Pre-Rig Up Safety Meeting	1/22/2018	09:35:00	USER					ALL HES PRESENT
Event	7	Rig-up Lines	1/22/2018	09:40:00	USER					HES RIGGED UP EQUIPMENT WITHOUT ENTERING RED ZONE.
Event	8	Pre-Job Safety Meeting	1/22/2018	12:45:00	USER					ALL HES AND RIG CREW PRESENT
Event	9	Start Job	1/22/2018	13:24:59	COM6					TD 1146.5', TP 1136.5', SJ 46.55', OH 13.5", CSG 9.625" 32.3#, MUD 9.4 PPG. RIG CIRCULATED WELL FOR APPROX 1 HRS
Event	10	Prime Pumps	1/22/2018	13:25:59	USER	37.00	8.33	2.00	2.00	8.33 PPG FRESH WATER
Event	11	Test Lines	1/22/2018	13:26:52	COM6	3451.00	8.33	0.50	0.50	ALL LINES HELD PRESSURE AT 3451 PSI
Event	12	Pump Spacer 1	1/22/2018	13:33:07	COM6	120.00	8.33	4.00	20.00	8.33 PPG FRESH WATER (20 BBL)
Event	13	Check weight	1/22/2018	13:34:43	COM6					WEIGHT VERIFIED VIA PRESSUREIZED MUD SCALES
Event	14	Pump Lead Cement	1/22/2018	13:39:28	COM6	531.00	12.30	8.00	53.00	VARICEM CEMENT 125 SKS (52.9 BBLs), 12.3 PPG, 2.38 FT3/SK, 13.77 GAL/SK

Event	15	Pump Tail Cement	1/22/2018	13:46:57	COM6	547.00	12.80	8.00	65.70	VARICEM CEMENT 175 SKS (66 BBLs), 12.8 PPG, 2.11 FT3/SK, 11.78 GAL/SK.
Event	16	Shutdown	1/22/2018	13:56:52	USER					END OF CEMENT
Event	17	Clean Lines	1/22/2018	13:57:27	USER					WASH UP PUMPS AND LINES ON TOP OF PLUG
Event	18	Drop Plug	1/22/2018	13:59:33	USER					PLUG WENT VIA COMP MAN
Event	19	Pump Displacement	1/22/2018	14:00:00	COM6	716.00	8.33	10.00	75.7	8.34 PPG FRESH WATER (85.7 BBLs)
Event	20	Slow Rate	1/22/2018	14:10:51	USER	247.00	8.33	2.00	10.00	SLOW RATE TO 2 BPM PER CO REP TO LAND PLUG
Event	21	Bump Plug	1/22/2018	14:16:03	USER	800.00	8.33	2.00	85.7	LAND PLUG AT 251PSI, BROUGHT UP TO 800PSI
Event	22	Check Floats	1/22/2018	14:19:46	USER					FLOATS HELD, 1 BBL BACK TO TRUCK
Event	23	End Job	1/22/2018	14:21:00	COM6					RETURNS THROUGHOUT JOB, 20 BBL OF CEMENT BACK TO SURFACE
Event	24	Post-Job Safety Meeting (Pre Rig-Down)	1/22/2018	14:46:22	USER					ALL HES PRESENT
Event	25	Rig-Down Equipment	1/22/2018	14:50:00	USER					ALL HES PRESENT
Event	26	Pre-Convoy Safety Meeting	1/22/2018	15:20:00	USER					ALL HES PRESENT
Event	27	Crew Leave Location	1/22/2018	15:25:00	USER					THANK YOU FOR CHOOSING HALLIBURTON CEMENT, CHRIS SMITH AND CREW

TEP - PA 41-26 - 9.625 SURFACE



- | | | | |
|---|--------------------------|---------------------|--|
| ① Call Out | ⑧ Pre-Job Safety Meeting | ⑮ Pump Tail Cement | ⑳ Check Floats |
| ② Pre-Convoy Safety Meeting | ⑨ Start Job | ⑯ Shutdown | ㉓ End Job |
| ③ Crew Leave Yard | ⑩ Prime Pumps | ⑰ Clean Lines | ㉔ Post-Job Safety Meeting (Pre Rig-Down) |
| ④ Arrive At Loc | ⑪ Test Lines | ⑱ Drop Plug | ㉕ Rig-Down Equipment |
| ⑤ Assessment Of Location Safety Meeting | ⑫ Pump Spacer 1 | ⑲ Pump Displacement | ㉖ Pre-Convoy Safety Meeting |
| ⑥ Pre-Rig Up Safety Meeting | ⑬ Check weight | ㉒ Slow Rate | ㉗ Crew Leave Location |
| ⑦ Rig-up Lines | ⑭ Pump Lead Cement | ㉑ Bump Plug | |

TEP - PA 41-26 - 9.625 SURFACE

