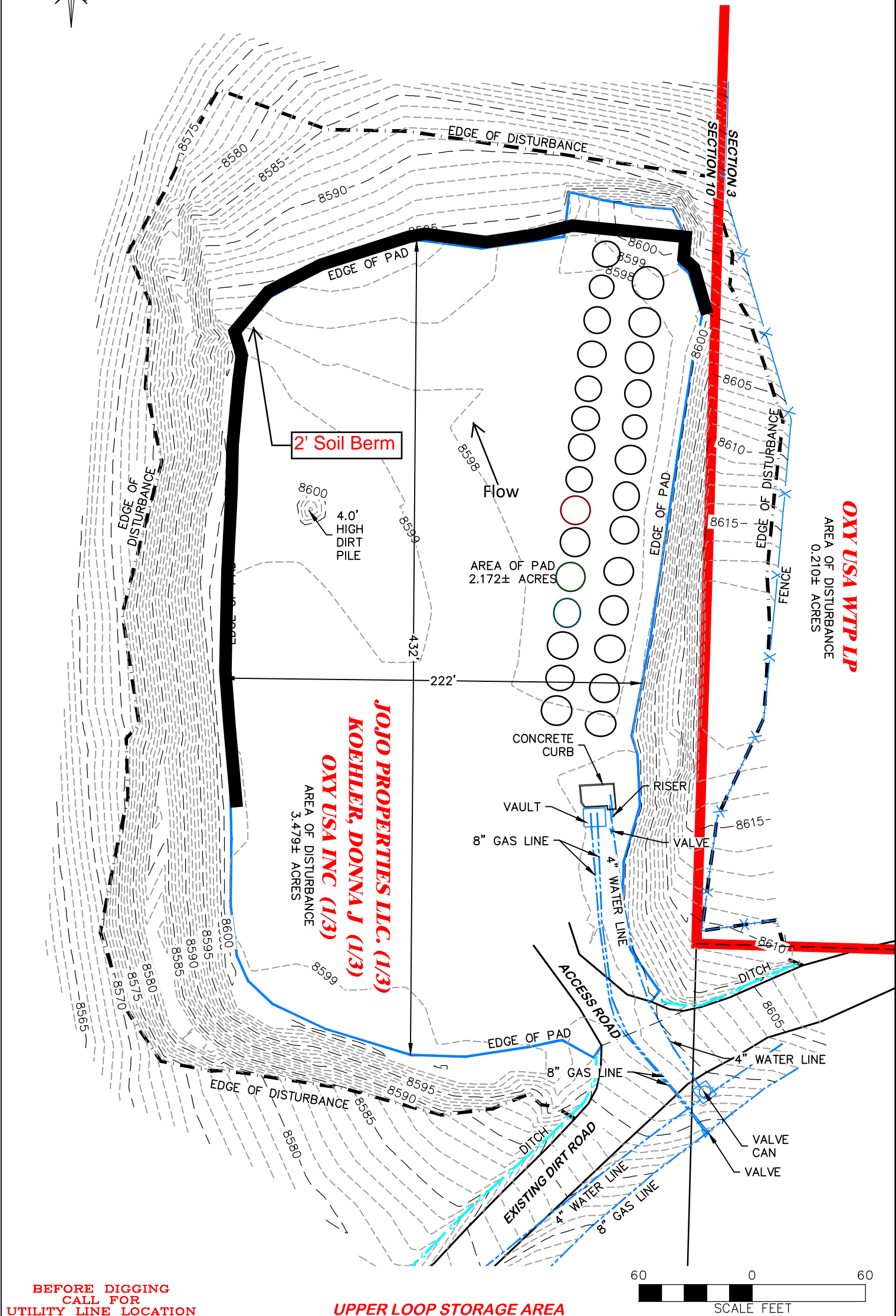


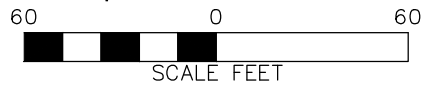
ASBUILT


GRADED ELEVATION: 5899.0'
AREA OF DISTURBANCE: 3.7± ACRES
DRAINS TO CASCADE CANYON



BEFORE DIGGING
CALL FOR
UTILITY LINE LOCATION

UPPER LOOP STORAGE AREA



 DRG RIFFIN & ASSOCIATES, INC. (307) 362-5028 1414 ELK ST., ROCK SPRINGS, WY 82901	
DRAWN: 5/12/2014 - TCM	SCALE: 1" = 60'
REVISED: N/A -	DRG JOB No. 20048
	EXHIBIT 2A

ASBUILT
ASBUILT OXY USA WTP LP UPPER LOOP STORAGE AREA NENW & NWNE, SECTION 10, T. 6 S., R. 97 W., 6th P.M., GARFIELD COUNTY, COLORADO