



PIONEER

Pioneer Energy Services

RADIAL BOND LOG WITH GAMMA RAY

Company RENEGADE OIL & GAS COMPANY			
Well SARTI 24-10			
Field COMANCHE CREEK			
Co. ELBERT			
State COLORADO			
Location:		API # : 05-039-06262	
Other Services		NONE	
Permanent Datum		GL	
Log Measured From		KB	
Drilling Measured From		KB	
SEC		TWP	
RGE		RGE	
NWSE 1980' FSL & 1980' FEL		Elevation 5925'	
		Above Perm. Datum	
		K.B. 5936'	
		D.F. 5935'	
		G.L. 5925'	
Date of Service 02 MAY 2018			
Run Number ONE			
Depth Driller or PBTD 7793			
Depth Logger 2500			
Bottom Log Interval 2500			
Top Log Interval SURFACE			
Open Hole Size 8.625"			
Type Fluid PRODUCED FLUID			
Fluid Level FULL			
Fluid Density N/A			
Max. Recorded Temperature 120 degF			
Max. Wellhead Pressure ZERO			
Wellhead Connection N/A			
Estimated Cement Top N/A			
Unit Number P-129			
Wireline Size 9/32			
Location FORT MORGAN			
Recorded By SCHOENROGGE/PACE			
Witnessed By ED INGVE			
Size			
Wt/Ft			
Top			
Bottom			
Tubing Record			
Surface Casing 8.625 24# SURFACE 215'			
Production Casing 4.5 11.6# SURFACE TD			
Liner Record			

<<< Fold Here >>>

All interpretations are opinions based on inferences from electrical or other measurements and Pioneer Wireline Services, LLC cannot and does not guarantee the accuracy or correctness of any interpretation, and Pioneer Wireline Services, LLC will not be liable or responsible for any loss, costs, damages, or expenses incurred or sustained by anyone resulting from any interpretation made by any of our officers, agents or employees.

Comments

N/A DENOTES NOT AVAILABLE OR NON-APPLICABLE.
HOLE TOP LOADED FROM 450 FEET UP WHILE LOGGING
NO FREE PIPE PASS

THANK YOU FOR USING PIONEER ENERGY SERVICES!

Your Pioneer Energy Services Crew	Tool Data - Services	Serial Number
Engineer: Operator: Operator: Operator:		

Log Variables

DatabaseC:\ProgramData\Warrior\Data\renegade_sarti_24-10_2-may-18.db
Dataset field/well/run1/pass9/_vars_



Top - Bottom

BHTEMP_Src TEMP	BOREID in 7.875	BOTTEMP degF 100	CASEOD in 4.5	CASETHCK in 0.25	CASEWGHT lb/ft 11.6	MAXAMPL mV 0
MINAMPL mV 1	MINATTN db/ft 0.08	PERFS 0	PPT usec 0	SRFTEMP degF 50	TDEPTH ft 5000	


Variable Description

BHTEMP_Src : BHTEMP Input Source Selector
BOREID : Borehole I.D.
BOTTEMP : Bottom Hole Temperature
CASEOD : Casing O.D.
CASETHCK : Casing Thickness
CASEWGHT : Casing Weight
MAXAMPL : Maximum Amplitude

MINAMPL : Minimum Amplitude
MINATTN : Minimum Attenuation
PERFS : Perforation Flag
PPT : Predicted Pipe Time
SRFTEMP : Surface Temperature
TDEPTH : Total Depth

Sensor	Offset (ft)	Schematic	Description	Length (ft)	O.D. (in)	Weight (lb)
			Cable Head-Titan_144 1 7/16" Titan Cable Head	1.03	1.44	2.00
			Centralizer-275 Probe 2 3/4" Probe Adjustable Spring Centralizer	2.88	2.75	15.00
			PROBE-RBT-DIGITAL-RBL-D (070132) Probe 2 3/4" Radii Bond-Digital	8.75	2.75	100.00
WVFS8	14.82					
WVFS7	14.82					
WVFS6	14.82					
WVFS5	14.82					
WVFS4	14.82					
WVFS3	14.82					
WVFS2	14.82					
WVFS1	14.82					
WVFCAL	14.82					
WVF3FT	14.82					
WVF5FT	13.82					
HEADVOLT	10.63		Centralizer-275 Probe 2 3/4" Probe Adjustable Spring Centralizer	2.88	2.75	15.00

CCL	6.84		PROBE-GR/CCL-ANALOG-GR/CCL-A (0904.54 2 3/4" Gamma with CCL-Analog	2.75	60.00	
GR	4.11		Centralizer-275 Probe 2 3/4" Probe Adjustable Spring Centralizer	2.88	2.75	15.00
			Bullnose-PROBE Probe Go Pin Pressure Cap	0.33	1.38	1.00
Dataset: renegade_sarti_24-10_2-may-18.db: field/well/run1/pass9 Total length: 23.29 ft Total weight: 208.00 lb O.D.: 2.75 in						

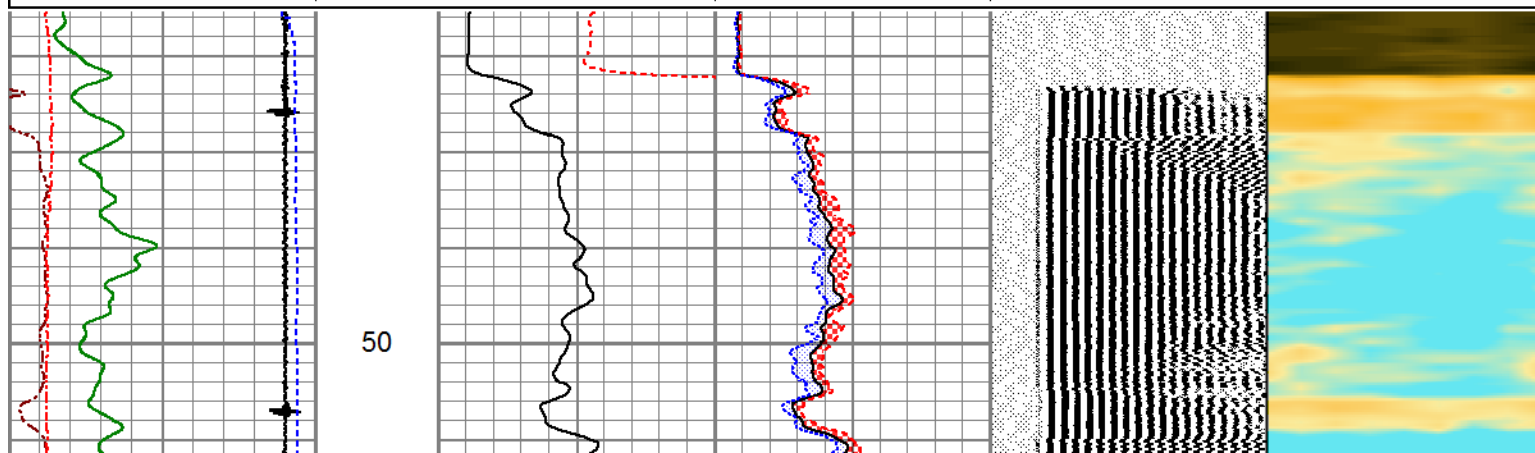


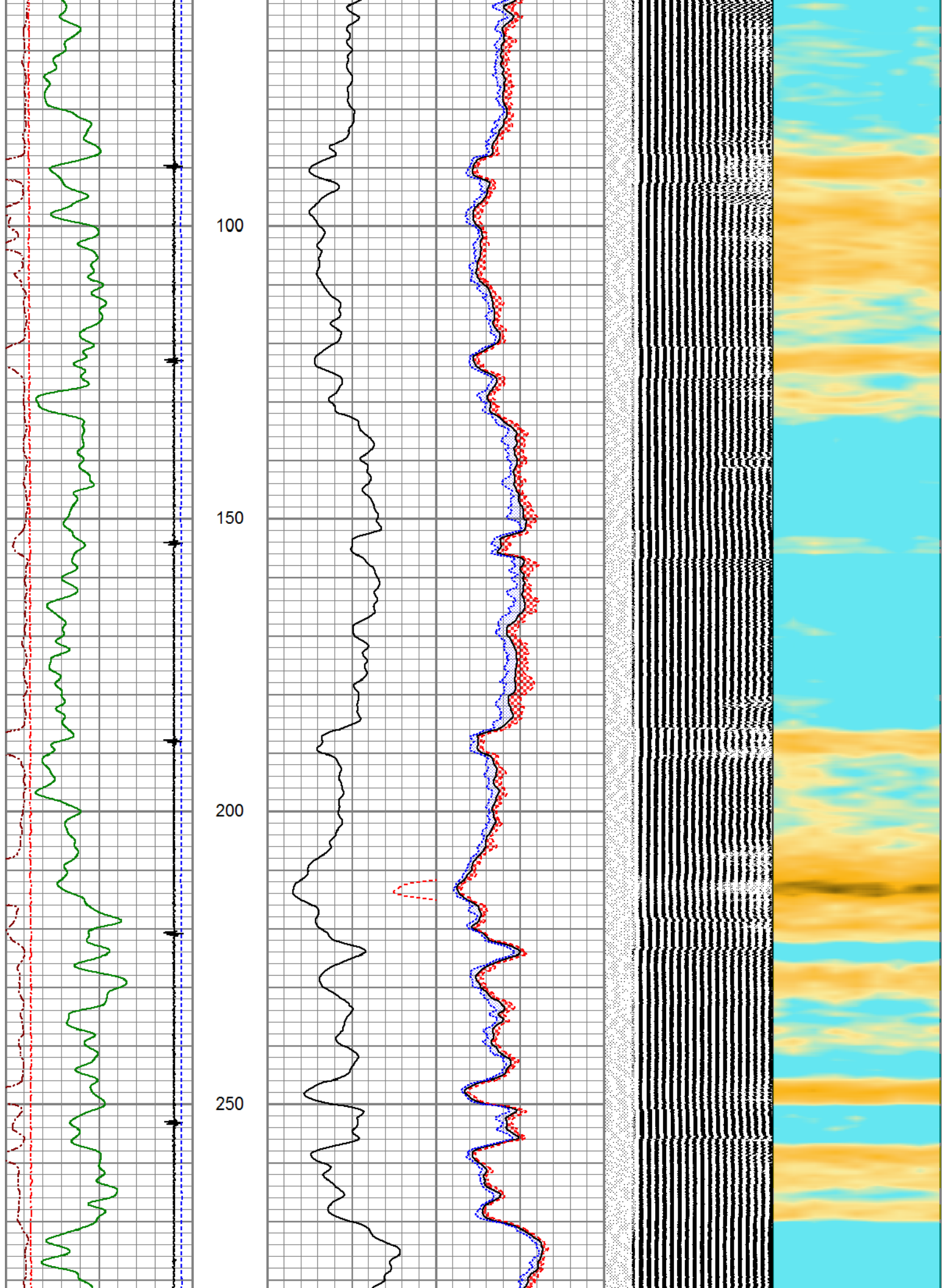
MAIN LOG

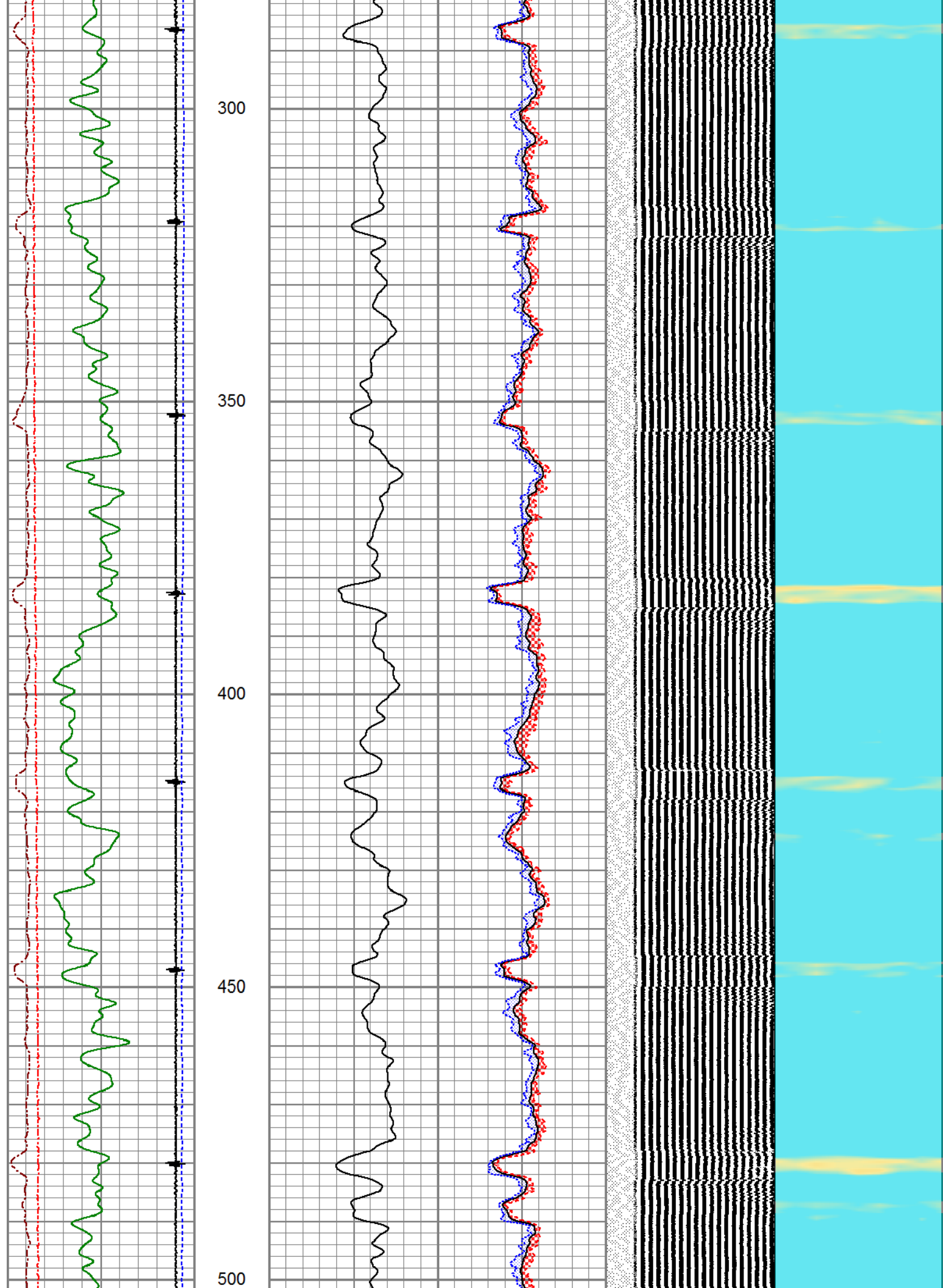
ZERO PSI APPLIED AT SURFACE

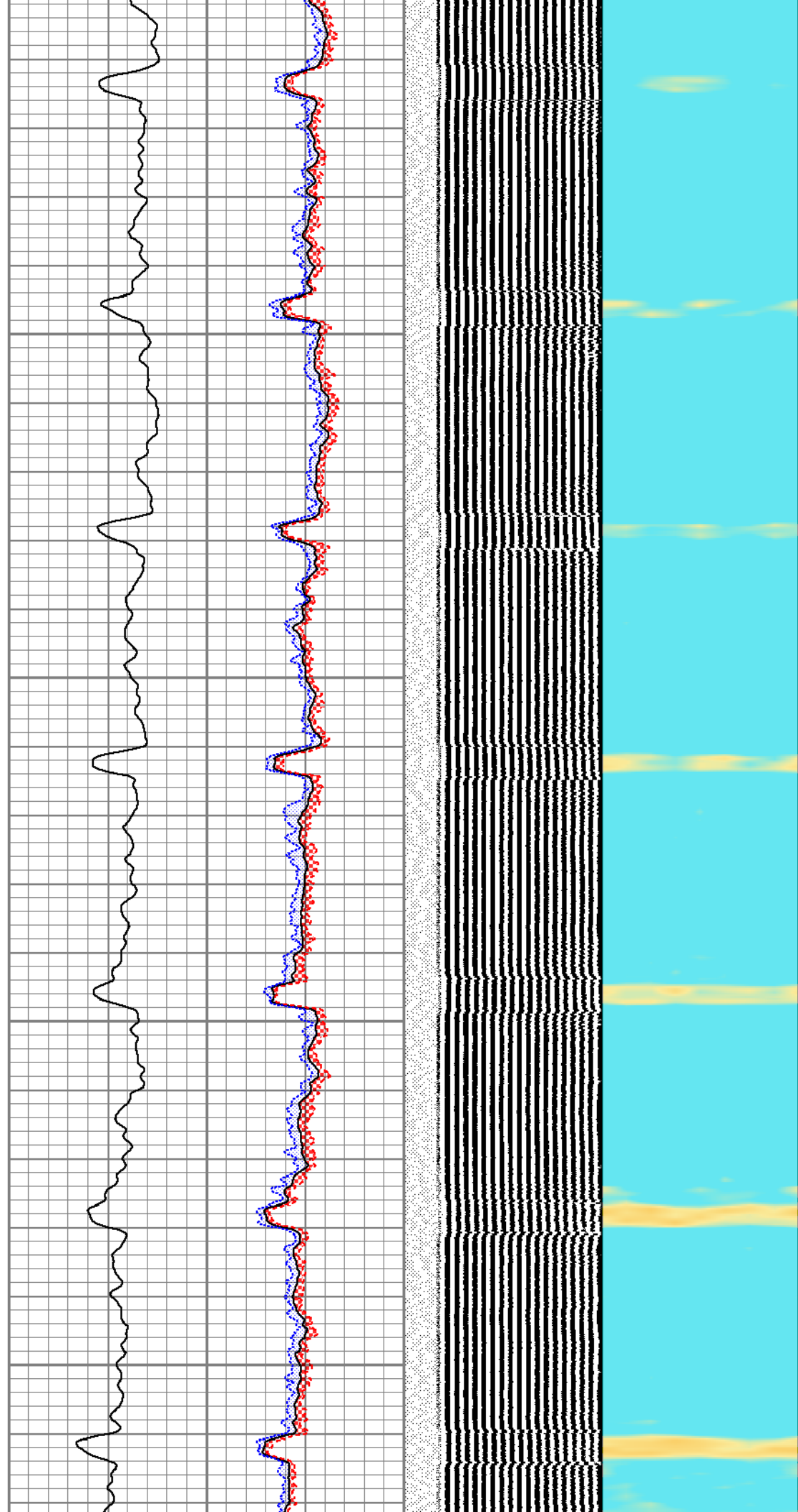
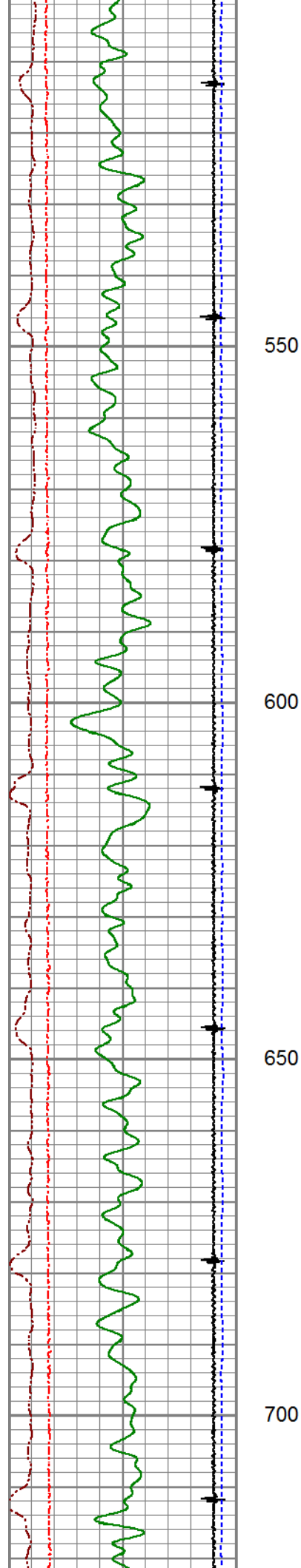
Database File	renegade_sarti_24-10_2-may-18.db
Dataset Pathname	pass9.3
Presentation Format	pinr_scbl
Dataset Creation	Wed May 02 10:13:50 2018
Charted by	Depth in Feet scaled 1:240

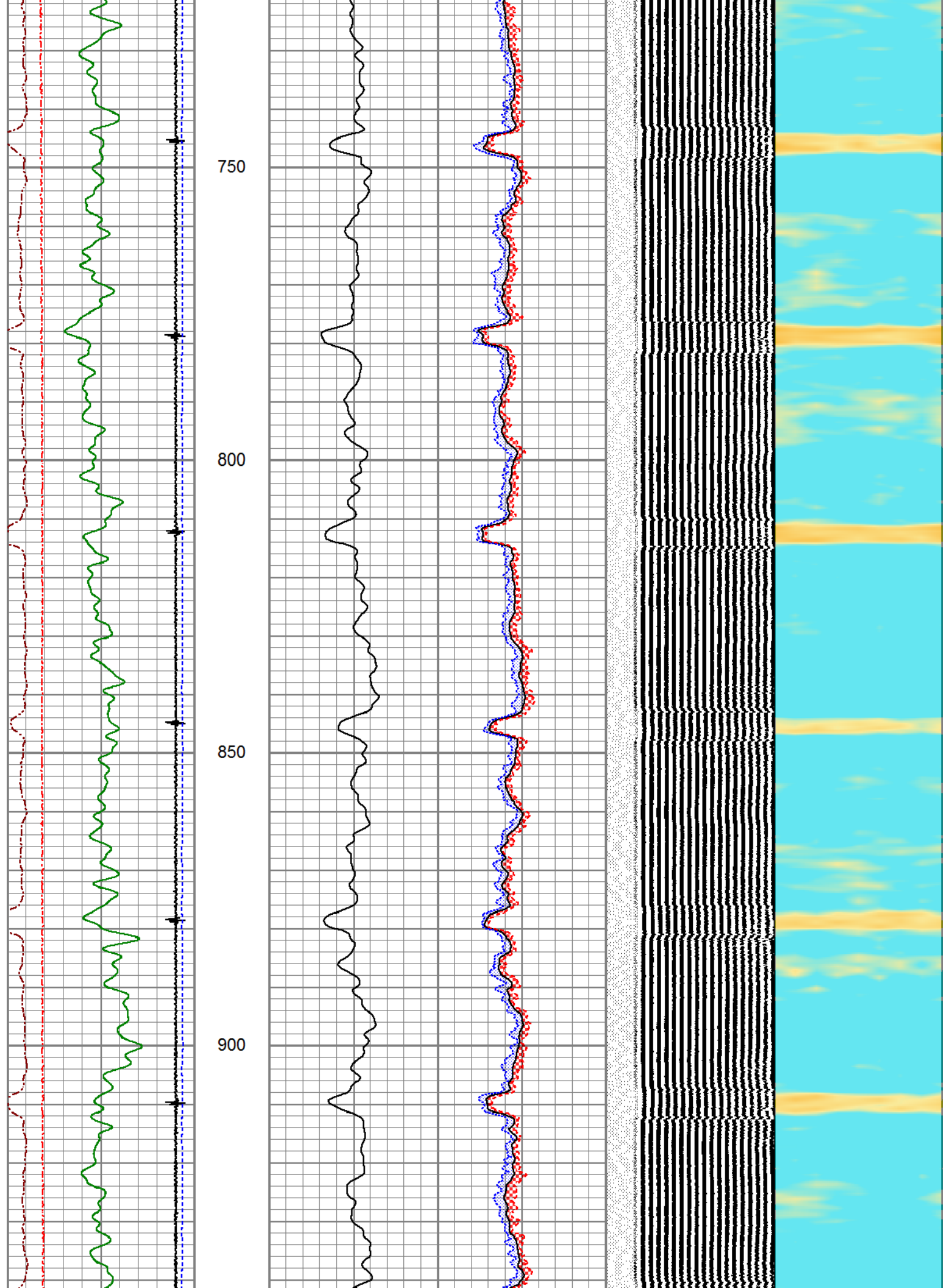
3Ft Travel Time	3' Amplitude	Sector	VDL	1	Sector Map	8
259 (usec) 159	0 (mV) 100	Amplitude Average	200 (usec) 1200			
-9 Collar Locator 1	3' Amplified Amplitude X 5	0 150				
Gamma Ray	0 (mV) 20	Sector Amplitude Maximum				
0 (GAPI) 150		0 150				
LineTension		Sector Amplitude Minimum				
0 (lb) 2000		0 150				
Line Speed						
-100 (ft/min) 100						

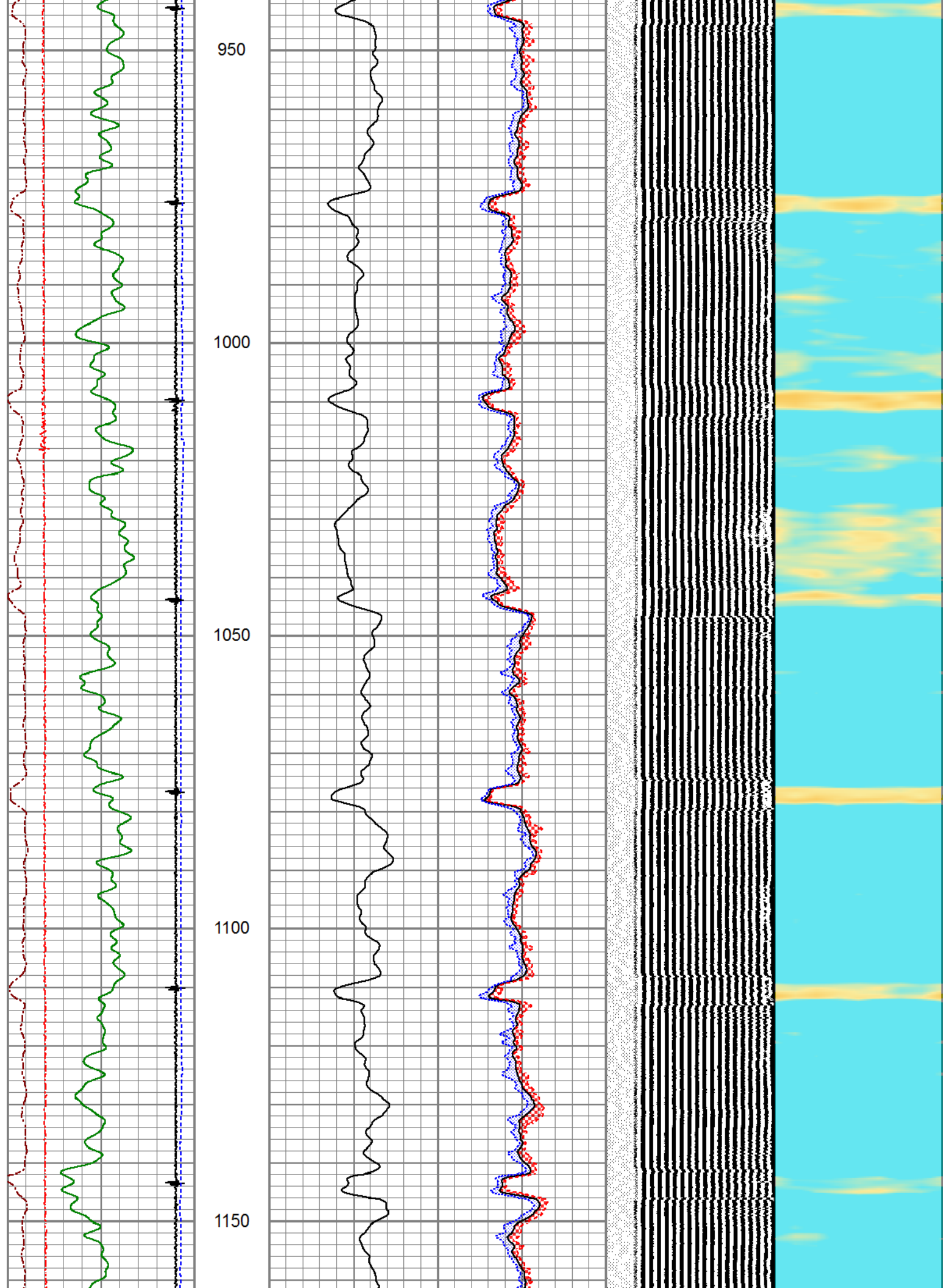


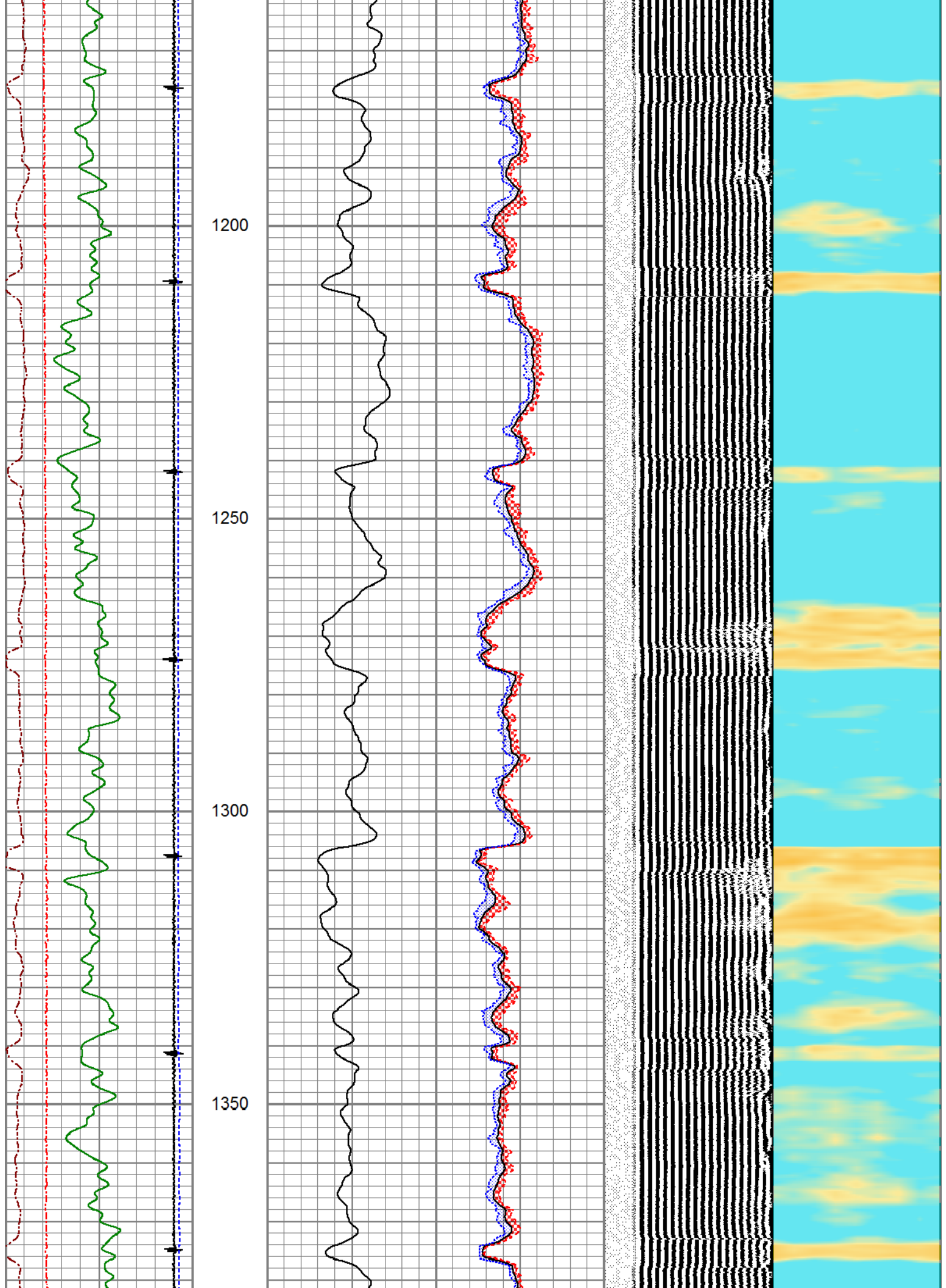


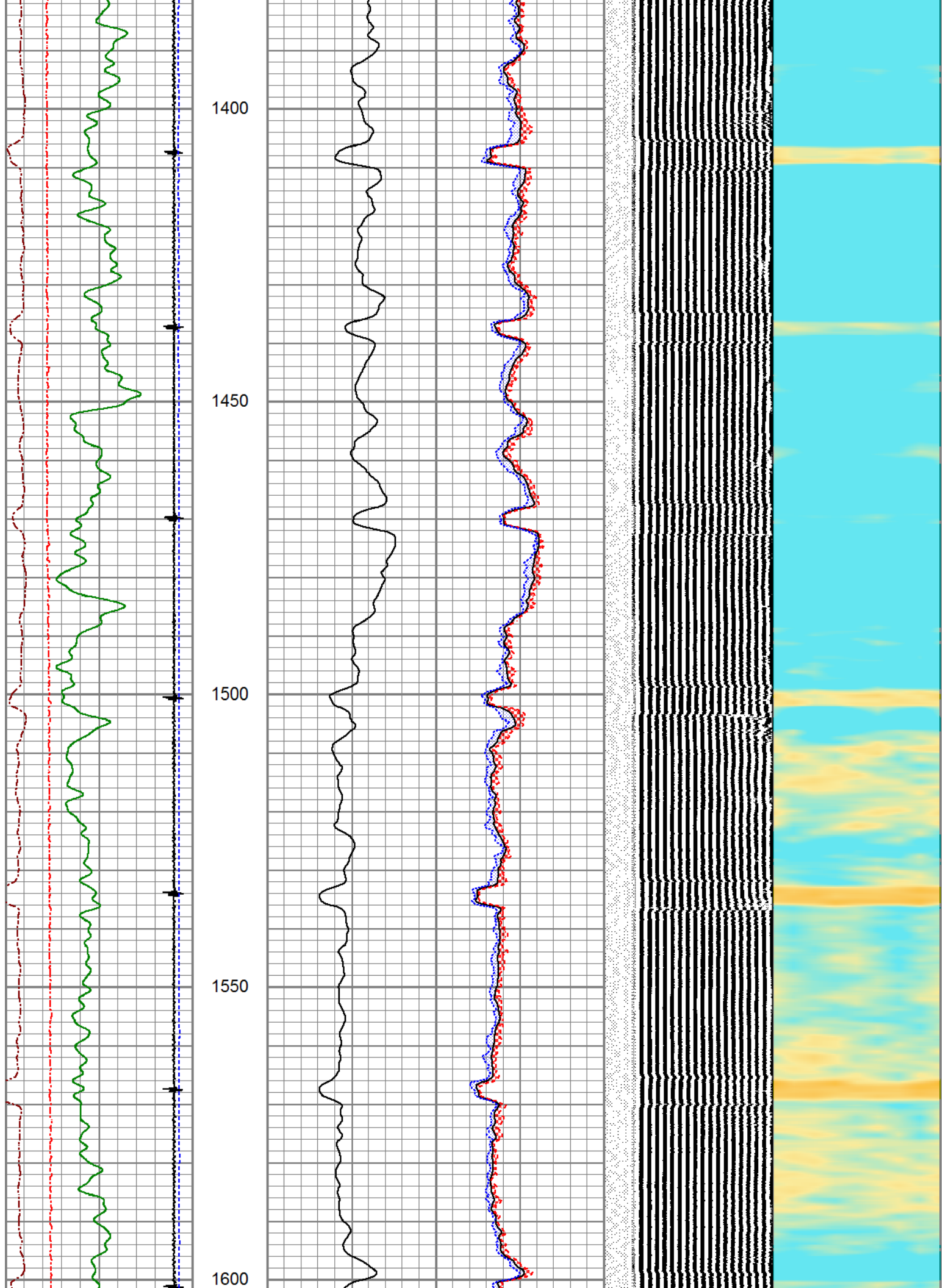


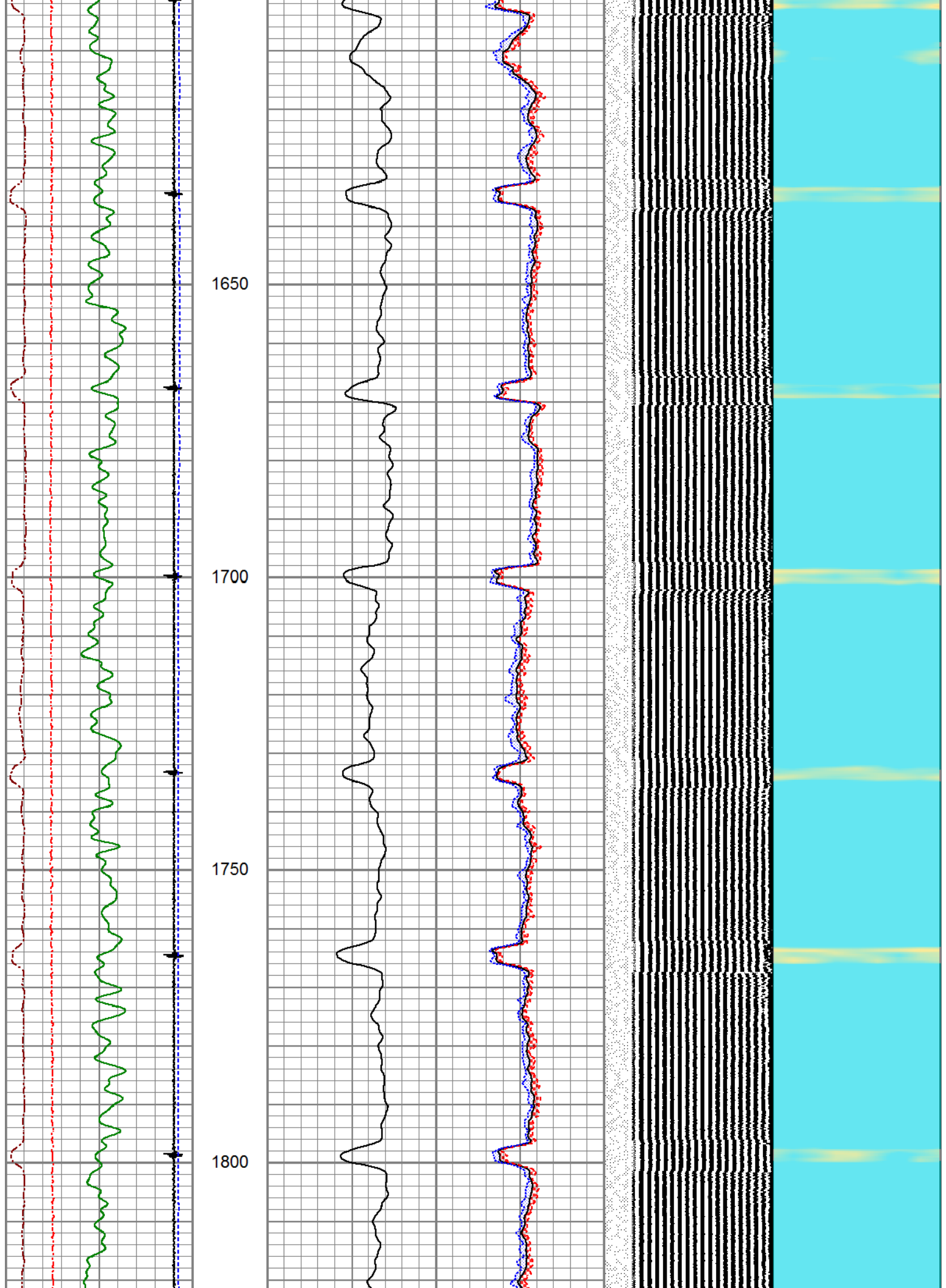


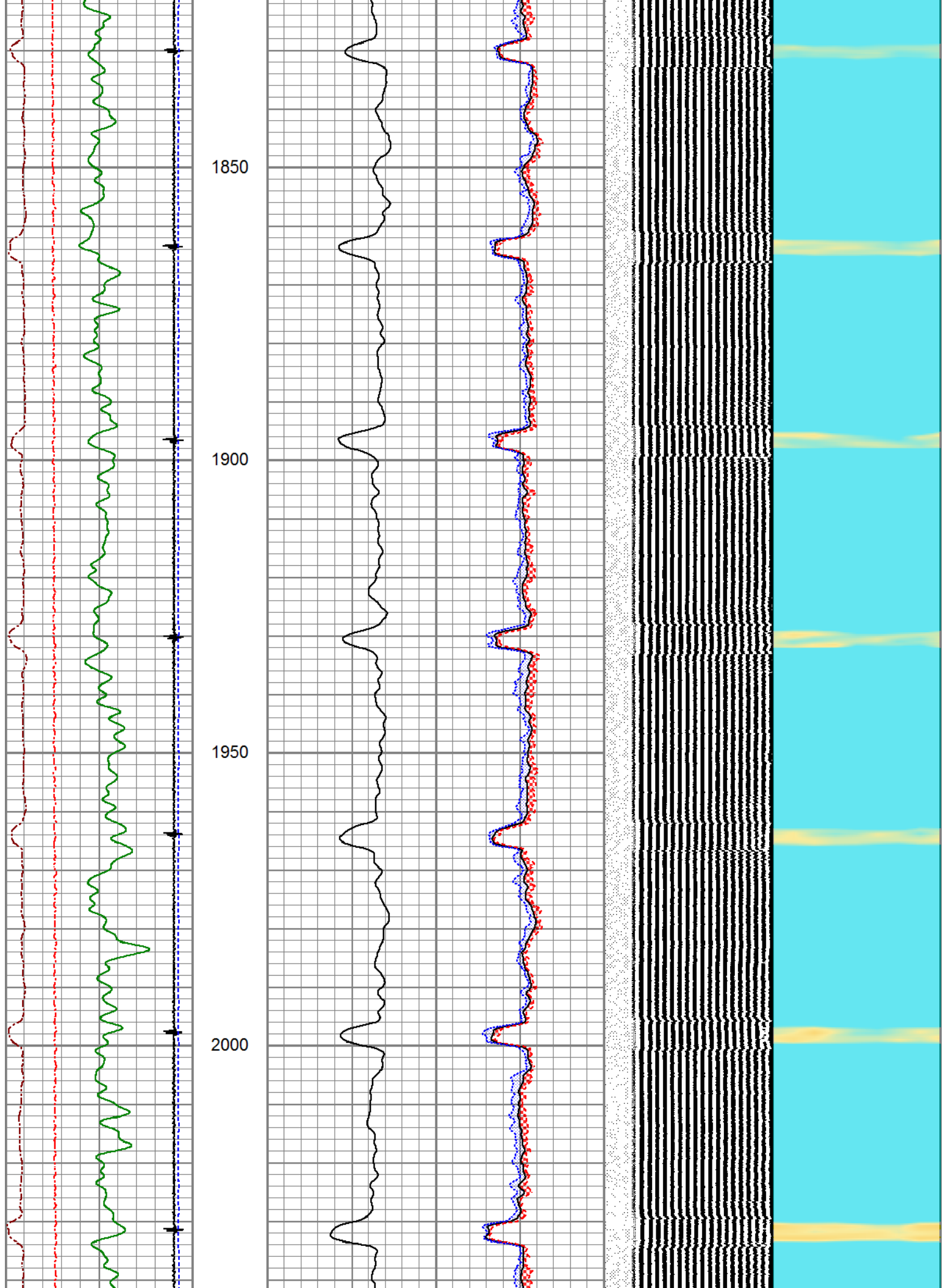


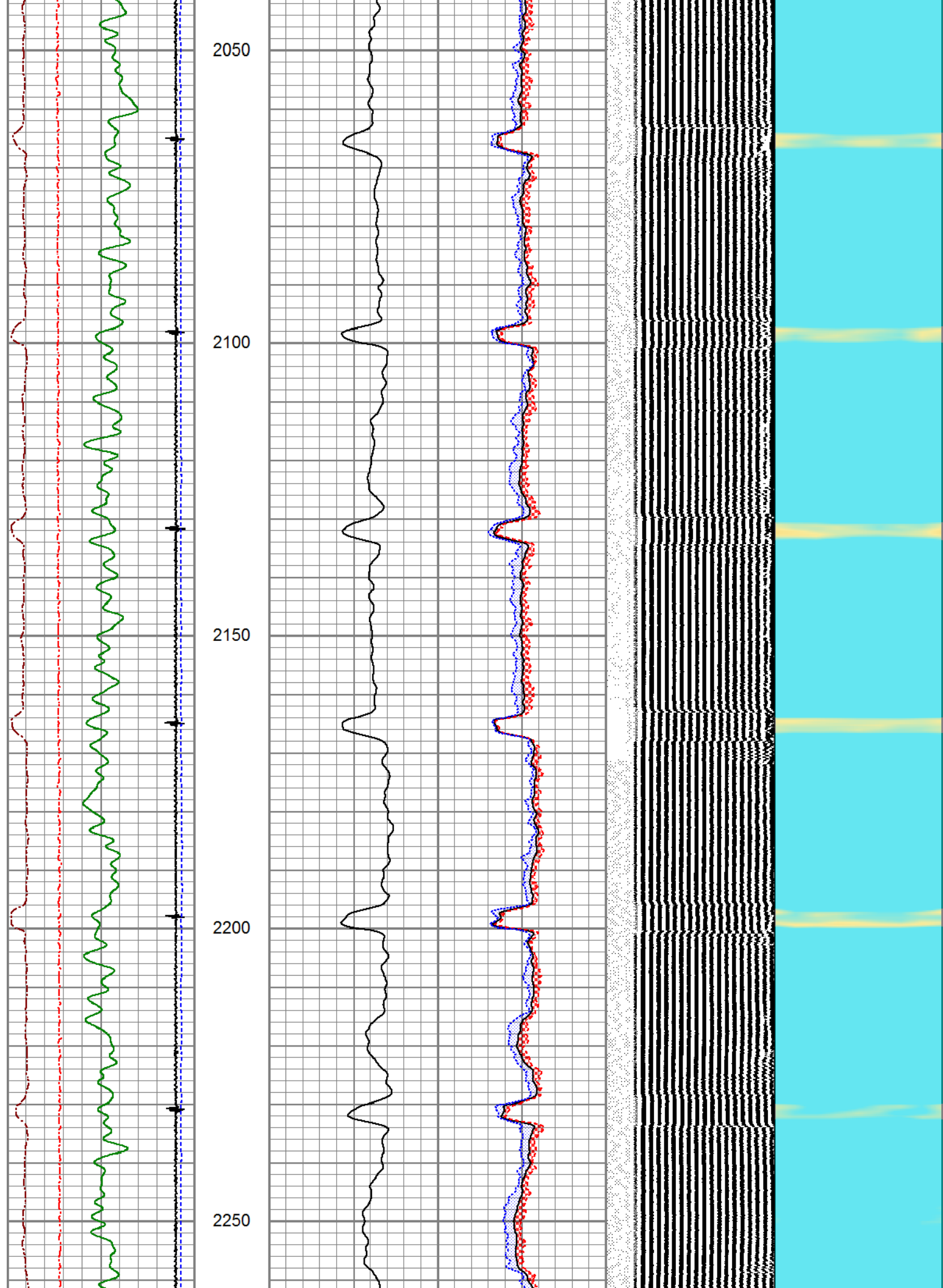


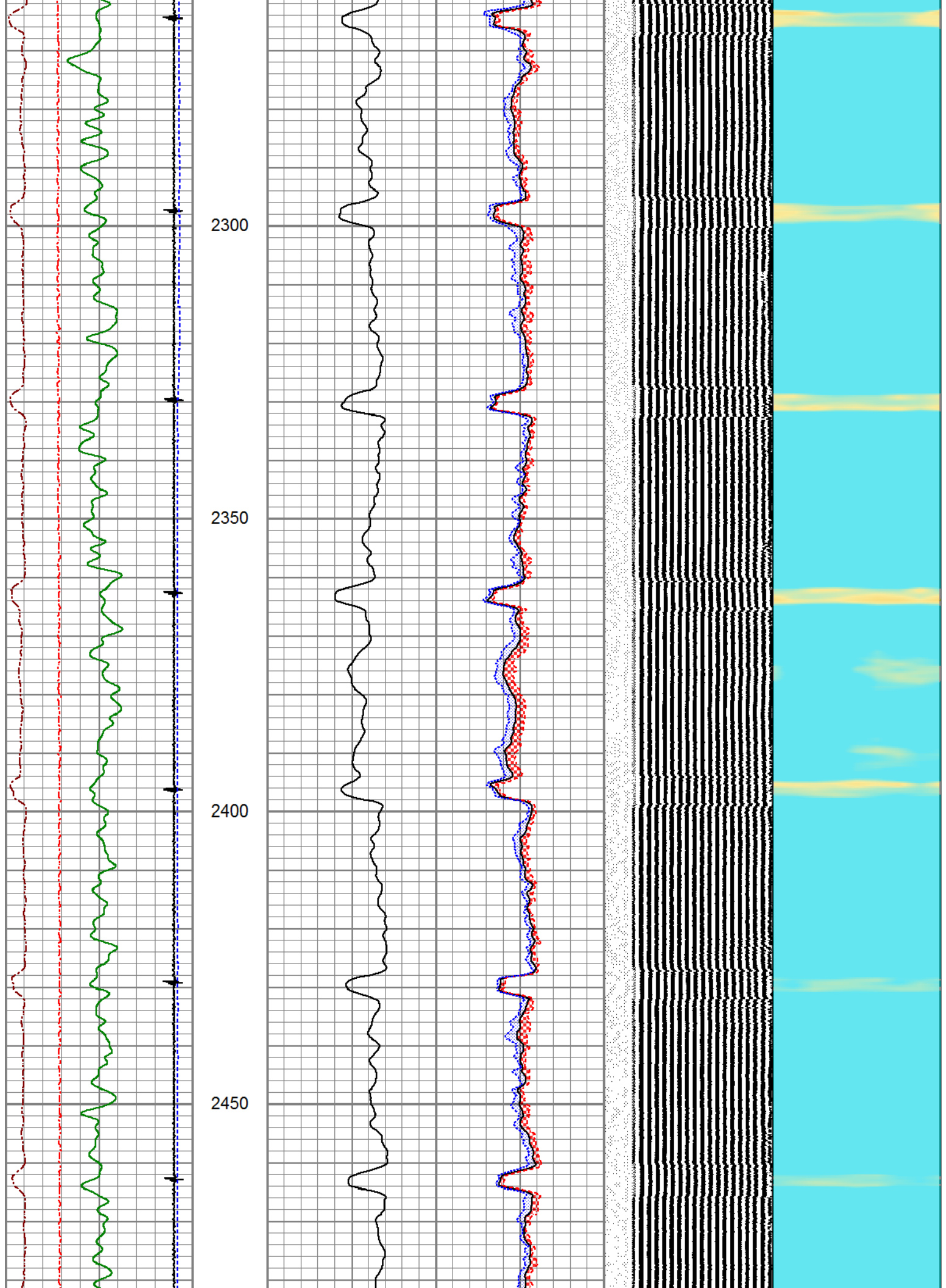


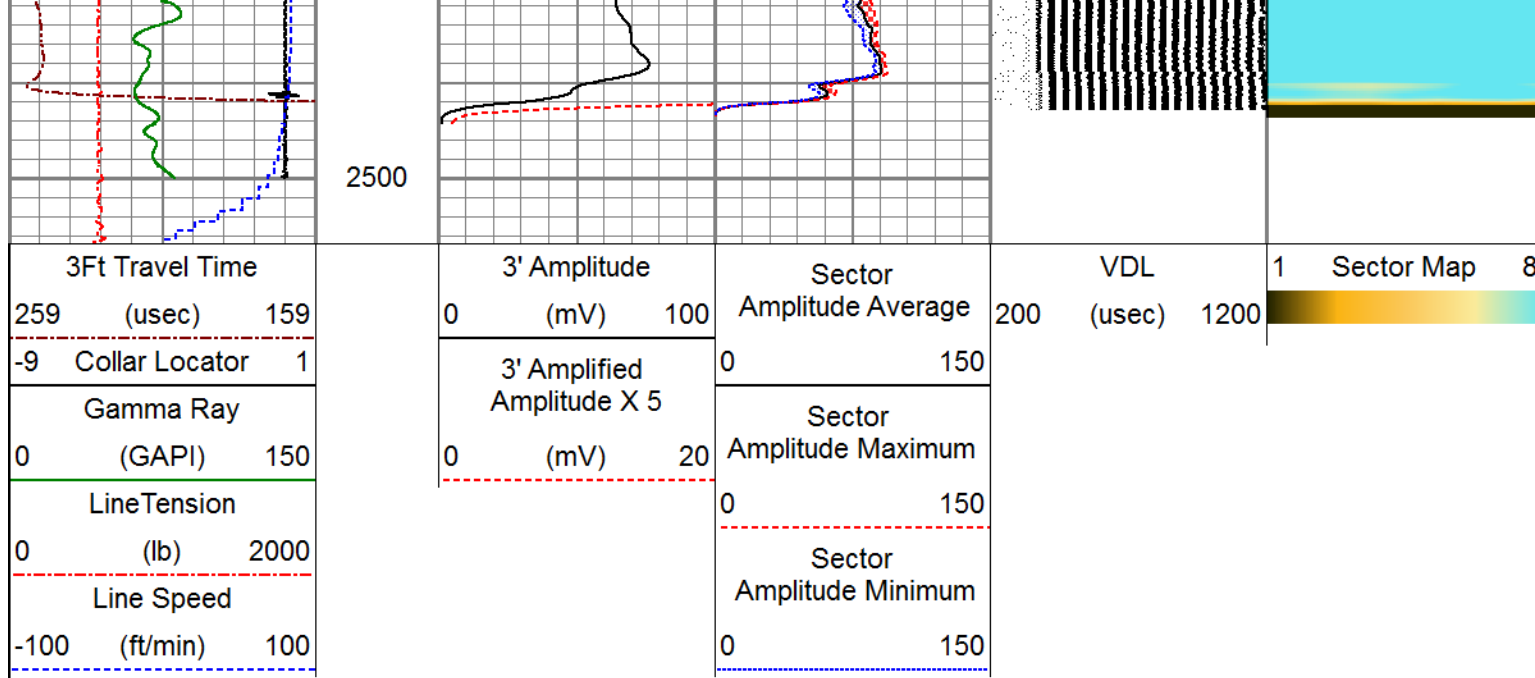













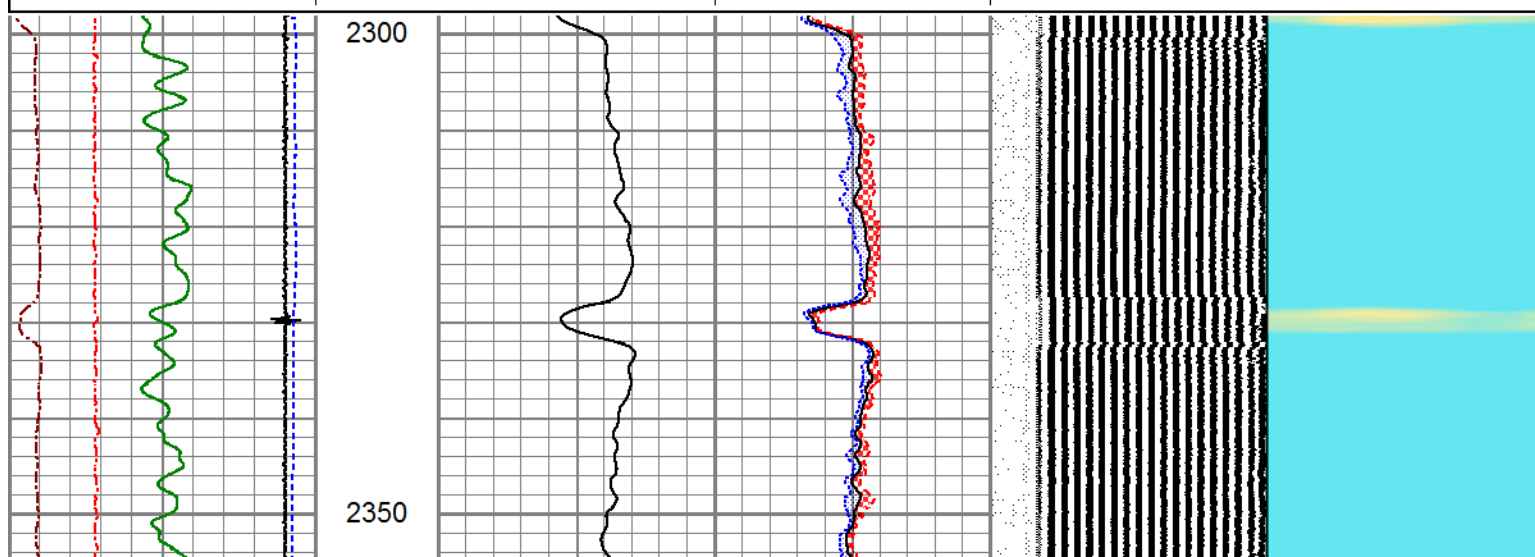
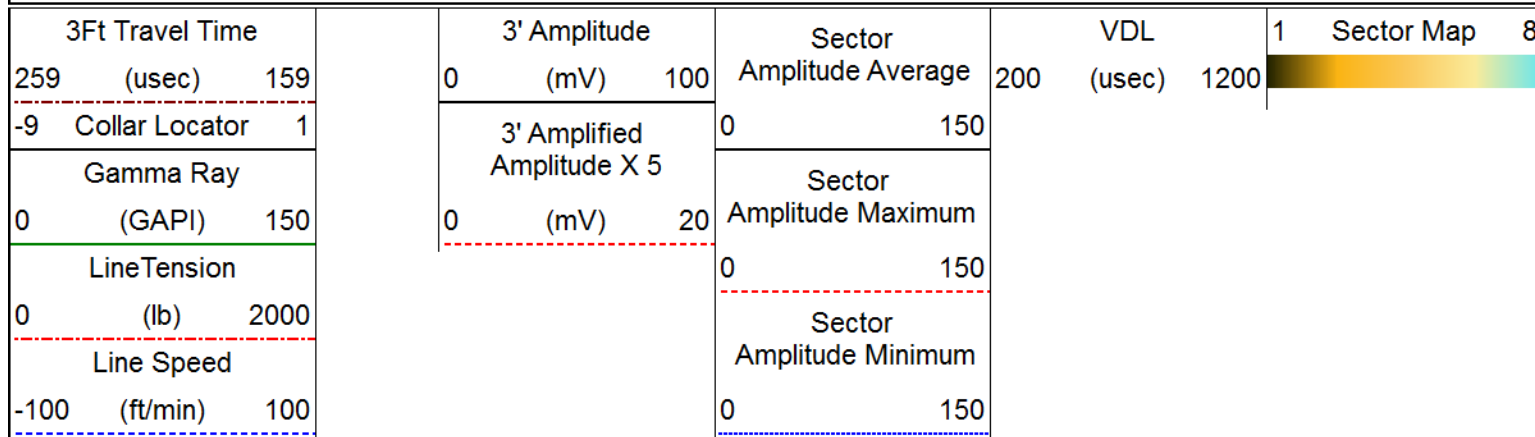


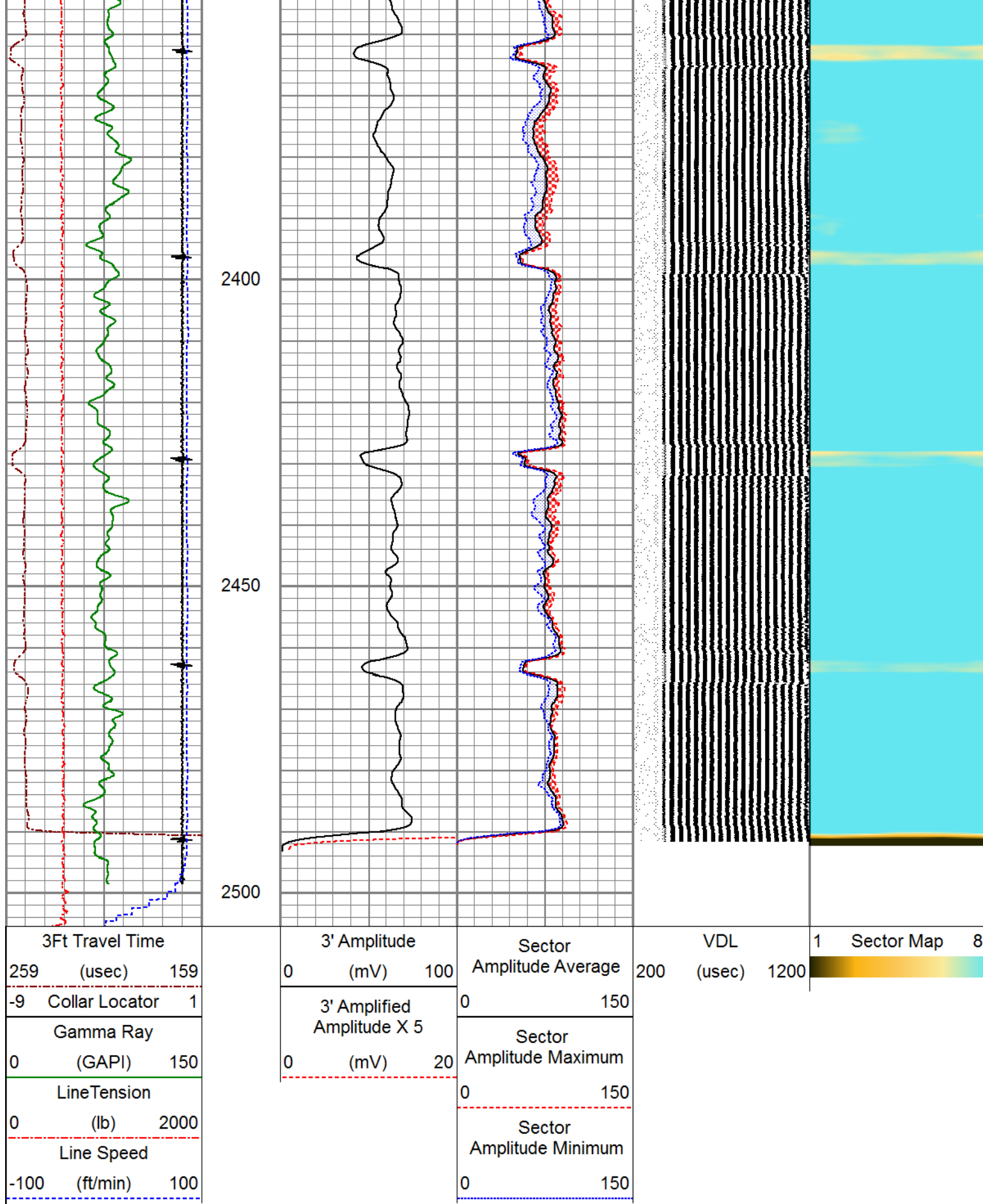
PIONEER
Pioneer Energy Services

REPEAT SECTION

ZERO PSI APPLIED AT SURFACE

Database File	renegade_sarti_24-10_2-may-18.db
Dataset Pathname	pass8.2
Presentation Format	pinr_scbl
Dataset Creation	Wed May 02 10:34:51 2018
Charted by	Depth in Feet scaled 1:240





Company RENEGADE OIL & GAS COMPANY
 Well SARTI 24-10
 Field COMANCHE CREEK

PIONEER

Pioneer Energy Services

County

ELBERT

State

COLORADO