

# HALLIBURTON

iCem<sup>®</sup> Service

## **NOBLE ENERGY INC**

Date: Friday, September 22, 2017

### **Hullabaloo State Y21-775 Production**

Job Date: Thursday, September 21, 2017

Sincerely,

Adam McKay

## Legal Notice

---

### Disclaimer:

All information in this report is provided subject to the terms and conditions which govern the services provided by Halliburton. Halliburton personnel use their best efforts in gathering information and their best judgment in interpreting it, but any interpretation, research, analysis or recommendation furnished by Halliburton are opinions based upon inferences from measurements and empirical relationships and assumptions, which inferences and empirical relationships and assumptions are not infallible, and with respect to which professionals in the industry may differ. Accordingly, HALLIBURTON IS UNABLE TO GUARANTEE THE ACCURACY OF ANY CHART INTERPRETATION, RESEARCH ANALYSIS, OR JOB RECOMMENDATION and any interpretation or recommendation is not for use of or reliance upon by any third party. The customer has full responsibility for any of its decisions which are based on the information provided in this report.

Table of Contents

---

1.0    Cementing Job Summary ..... 4

    1.1    Executive Summary .....4

2.0    Real-Time Job Summary ..... 7

    2.1    Job Event Log .....7

3.0    Attachments..... 9

    3.1    NOBLE ENERGY PRODUCTION CASING-Custom Results (1).png .....9

    3.2    NOBLE ENERGY PRODUCTION CASING-Custom Results.png.....10

## 1.0 Cementing Job Summary

---

### 1.1 Executive Summary

---

Halliburton appreciates the opportunity to perform the cementing services on the **Hullabaloo State Y21-775** cement **Production** casing job. A pre-job safety meeting was held before the job where details of the job were discussed, potential safety hazards were reviewed, and environmental compliance procedures were outlined.

Halliburton maintains a continuous quality improvement process and appreciates any comments or suggestions that you may have. Halliburton again thanks you for the opportunity to perform service work on this well. We hope to be your solutions provider for future projects.

Respectfully,

**Halliburton [Ft. Lupton]**

HALLIBURTON

## Cementing Job Summary

## The Road to Excellence Starts with Safety

Sold To #: 345242		Ship To #: 3819713		Quote #:		Sales Order #: 0904306965				
Customer: NOBLE ENERGY INC - EBUS				Customer Rep:						
Well Name: HULLABALOO STATE		Well #: Y21-775		API/UWI #: 05-123-45241-00						
Field: WATTENBERG		City (SAP): KEENESBURG		County/Parish: WELD		State: COLORADO				
Legal Description: NW NW-16-2N-64W-445FNL-917FWL										
Contractor: H & P DRLG				Rig/Platform Name/Num: H & P 517						
Job BOM: 7523 7523										
Well Type: HORIZONTAL OIL										
Sales Person: HALAMERICA\HB70026				Srcv Supervisor: Matthew Schaefer						
Job										
Formation Name										
Formation Depth (MD)		Top		Bottom						
Form Type				BHST		230 degF				
Job depth MD		17203ft		Job Depth TVD						
Water Depth				Wk Ht Above Floor		4'				
Perforation Depth (MD)		From		To						
Well Data										
Description	New / Used	Size in	ID in	Weight lbm/ft	Thread	Grade	Top MD ft	Bottom MD ft	Top TVD ft	Bottom TVD ft
Casing		9.625	8.921	36		J-55	0	2033	0	2033
Casing	0	5.5	4.778	20	BUTTRESS	P-110	0	17213	0	6885
Open Hole Section			8.5				2033	6885	0	6885
Open Hole Section			8.5				6885	17213	0	6885
Fluid Data										
Stage/Plug #: 1										
Fluid #	Stage Type	Fluid Name	Qty	Qty UoM	Mixing Density lbm/gal	Yield ft3/sack	Mix Fluid Gal	Rate bbl/min	Total Mix Fluid Gal	
1	11.5 lb/gal Tuned Spacer III w/ Chems	Tuned Spacer III	80	bbl	11.5	3.78				
34.70 gal/bbl		FRESH WATER								
0.60 gal/bbl		DUAL SPACER SURFACTANT B, 5 GAL PAIL (100003665)								
147.42 lbm/bbl		BARITE, BULK (100003681)								
0.60 gal/bbl		MUSOL A, 330 GAL TOTE - (790828)								
Fluid #	Stage Type	Fluid Name	Qty	Qty UoM	Mixing Density lbm/gal	Yield ft3/sack	Mix Fluid Gal	Rate bbl/min	Total Mix Fluid Gal	
2	ElastiCem Cap	ELASTICEM (TM) SYSTEM	150	sack	13.2	1.57		6	7.53	
0.70 %		SCR-100 (100003749)								
7.53 Gal		FRESH WATER								

iCem® Service

(v. 4.4.18)

## HALLIBURTON

## Cementing Job Summary

Fluid #	Stage Type	Fluid Name	Qty	Qty UoM	Mixing Density lbm/gal	Yield ft3/sack	Mix Fluid Gal	Rate bbl/min	Total Mix Fluid Gal
3	ElastiCem w/ SCBL	ELASTICEM (TM) SYSTEM	559	sack	13.2	1.6		6	7.69
7.69 Gal		FRESH WATER							
0.35 %		SCR-100 (100003749)							
Fluid #	Stage Type	Fluid Name	Qty	Qty UoM	Mixing Density lbm/gal	Yield ft3/sack	Mix Fluid Gal	Rate bbl/min	Total Mix Fluid Gal
4	NeoCem NT1	NeoCem TM	1184	sack	13.2	2.04		6	9.75
9.71 Gal		FRESH WATER							
0.07 %		SCR-100 (100003749)							
Fluid #	Stage Type	Fluid Name	Qty	Qty UoM	Mixing Density lbm/gal	Yield ft3/sack	Mix Fluid Gal	Rate bbl/min	Total Mix Fluid Gal
5	Displacement	Displacement	379	bbl	8.33				
Cement Left In Pipe	Amount	Reason						Shoe Joint	
Mix Water:	pH 7.6	Mix Water Chloride:	00 ppm		Mix Water Temperature:	65 °F			
Cement Temperature:		Plug Displaced by:	8.4PPG		Disp. Temperature:				
Plug Bumped?	Yes	Bump Pressure:	2000 psi		Floats Held?	Yes			
Cement Returns:		Returns Density:			Returns Temperature:				
Comment PUMPED 80BBL TUNED SPACER @11.5PPG, 42BBL CAP CEMENT @13.2PPG, 159BBL LEAD CEMENT @13.2PPG, 430BBL TAIL CEMENT @13.2PPG, 379BBL H2O DISPLACEMENT. NO SPACER TO SURFACE. PLUG BUMPED. FLOATS HELD, 4.5BBL BACK									

## 2.0 Real-Time Job Summary

## 2.1 Job Event Log

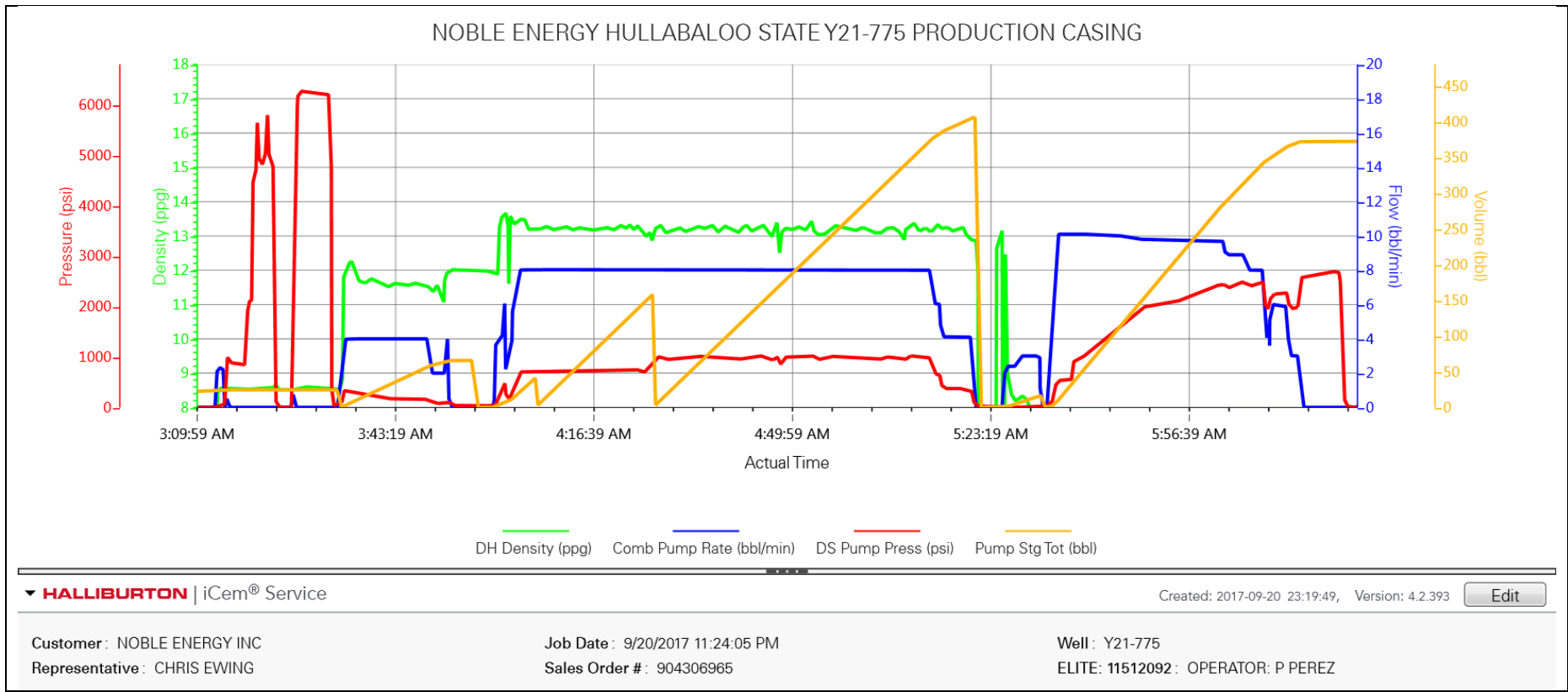
Type	Seq. No.	Activity	Graph Label	Date	Time	Source	DH Density (ppg)	Comb Pump Rate (bbl/min)	DS Pump Press (psi)	Comments
Event	1	Call Out	Call Out	9/20/2017	17:30:00	USER				
Event	2	Safety Meeting - Service Center or other Site	Safety Meeting - Service Center or other Site	9/20/2017	21:10:00	USER				PRE-JOURNEY: DISCUSS TRAVEL HAZARDS, DRIVING AT NIGHT, WILDLIFE, OTHER DRIVERS, FIT-FOR-DUTY.
Event	3	Depart from Service Center or Other Site	Depart from Service Center or Other Site	9/20/2017	21:20:00	USER				
Event	4	Arrive At Loc	Arrive At Loc	9/20/2017	21:50:00	USER				
Event	5	Safety Meeting - Assessment of Location	Safety Meeting - Assessment of Location	9/20/2017	21:55:00	USER				ASSESS LOCATION FOR HAZARDS, ESTABLISH RIG-UP PLAN, GET WELL INFO FROM COMPANY REP.
Event	6	Pre-Rig Up Safety Meeting	Pre-Rig Up Safety Meeting	9/20/2017	22:10:00	USER				DISCUSS RIG-UP HAZARDS WITH HES CREW. FOOTING, COMMUNICATION, PINCH POINTS, LINE-OF-FIRE, HEAVY LOADS, SUSPENDED LOADS, RED-ZONE AWARENESS, DARK AREAS AROUND EQUIPMENT
Event	7	Rig-Up Equipment	Rig-Up Equipment	9/20/2017	22:15:00	USER				
Event	8	Standby Rig	Standby Rig	9/20/2017	22:30:00	USER				RIG FILL CASING AND CIRCULATE WELL
Event	9	Safety Meeting - Pre Job	Safety Meeting - Pre Job	9/21/2017	02:45:00	USER				DISCUSS HAZARDS WITH HES/RIG CREW. HIGH PRESSURE IRON, V-DOOR, LOW-PRESSURE VESSELS, TRIPPING HAZARDS, FIRE PLAN, ESCAPE PLAN (MUSTER AREA), FIRST AID, EMERGENCY PLAN.
Event	10	Start Job	Start Job	9/21/2017	03:07:58	COM4				
Event	11	Pump thru All Lines	Pump thru All Lines	9/21/2017	03:12:40	USER				FILL LINES W/ 3BBL H2O
Event	12	Pressure Test	Pressure Test	9/21/2017	03:15:02	USER	8.60		6273.00	500PSI -- 2MIN, 6000PSI -- 5MIN
Event	13	Drop Bottom Plug	Drop Bottom Plug	9/21/2017	03:33:29	USER				DROP 1ST BOTTOM PLUG -- COMPANY REP WITNESSED
Event	14	Pump Spacer	Pump Spacer	9/21/2017	03:34:47	USER	12.04	4.00	349.00	80BBL TUNED SPACER @ 11.5PPG
Event	15	Shutdown	Shutdown	9/21/2017	03:53:14	USER				

Event	16	Drop Bottom Plug	Drop Bottom Plug	9/21/2017	03:56:38	USER					DROP 2ND BOTTOM PLUG -- COMPANY REP WITNESS
Event	17	Pump Cap Cement	Pump Cap Cement	9/21/2017	03:59:38	USER	13.55	4.20	304.00		42BBL CAP CEMENT @ 13.2PPG; 150SKS, 1.57FT/SK, 7.53G/SK
Event	18	Pump Lead Cement	Pump Lead Cement	9/21/2017	04:07:23	USER	13.21	8.00	704.00		159BBL LEAD CEMENT @ 13.2PPG; 559SKS, 1.6FT/SK, 7.69G/SK
Event	19	Pump Tail Cement	Pump Tail Cement	9/21/2017	04:27:38	USER	13.36	8.00	1011.00		430BBL TAIL CEMENT @ 13.2PPG; 1184SKS, 2.04FT/SK, 9.71G/SK
Event	20	Shutdown	Shutdown	9/21/2017	05:21:27	USER					WASH PUMPS AND LINES
Event	21	Drop Top Plug	Drop Top Plug	9/21/2017	05:32:13	USER					DROP TOP PLUG -- CUSTOMER WITNESSED
Event	22	Pump Displacement	Pump Displacement	9/21/2017	05:33:15	USER	7.95	10.10	533.00		379BBL H2O DISPLACEMENT --- 20BBL W/ 10GAL MMCR, REMAINDER WITH 20GAL BIOCID
Event	23	Bump Plug	Bump Plug	9/21/2017	06:14:49	USER					BUMPED PLUG @ 2000--2600PSI
Event	24	Check Floats	Check Floats	9/21/2017	06:22:42	USER					FLOATS HELD, 4.5BBL BACK
Event	25	End Job	End Job	9/21/2017	06:24:00	COM4					
Event	26	Safety Meeting - Pre Rig-Down	Safety Meeting - Pre Rig-Down	9/21/2017	06:30:00	USER					DISCUSS RIG-DOWN HAZARDS WITH HES CREW. FOOTING, COMMUNICATION, PINCH POINTS, LINE-OF-FIRE, HEAVY LOADS, SUSPENDE
Event	27	Rig-Down Equipment	Rig-Down Equipment	9/21/2017	06:35:00	USER					
Event	28	Safety Meeting - Departing Location	Safety Meeting - Departing Location	9/21/2017	07:45:00	USER					
Event	29	Depart Location	Depart Location	9/21/2017	08:00:00	USER					



3.0 Attachments

3.1 NOBLE ENERGY PRODUCTION CASING-Custom Results (1).png



## 3.2 NOBLE ENERGY PRODUCTION CASING-Custom Results.png

