

GOLDEN EAGLE MINE NW-3-5-95 API# 05-071-06406 – TIMBER CREEK  
OGCC OPERATOR NUMBER 10672 – INSPECTION DATE: MAY 01, 2018  
CORRECTIVE ACTIONS COMPLETED REGARDING COGCC FIR DOCUMENT # 680102758



PHOTO 1: OVERVIEW OF LOCATION TO WEST. THE ACCESS ROAD AND WELL PAD WERE RECONTOURED TO MATCH THE SURROUNDING TERRAIN. THIS PROCESS ALLOWED FOR SOIL DECOMPACTION. THE TOPSOIL STOCKPILE WAS USED TO RECLAIM LOCATION. GRADING TECHNIQUES WERE INSTALLED ON THE CONTOUR TO PROMOTE GROUND INFILTRATION AND PREPARE THE SOIL FOR SEEDING. THE EARTH DISTURBANCE WAS STABILIZED BY HYDRO-SEEDING USING AN APPROVED HILL RANCH SEED MIX TO PROMOTE THE ESTABLISHMENT OF VEGETATION. ALL PIPING AND DEBRIS WERE REMOVED FROM LOCATION.

GOLDEN EAGLE MINE NW-3-5-95 API# 05-071-06406 – TIMBER CREEK  
OGCC OPERATOR NUMBER 10672 – INSPECTION DATE: MAY 01, 2018  
CORRECTIVE ACTIONS COMPLETED REGARDING COGCC FIR DOCUMENT # 680102758



PHOTO 2: VIEW NORTHEAST ALONG THE RECLAIMED WELL PAD AND ACCESS ROAD. THE ACCESS ROAD AND WELL PAD WERE RECONTOURED TO MATCH THE SURROUNDING TERRAIN WHICH CORRECTED THE EROSION ISSUES. GRADING TECHNIQUES WERE INSTALLED ON THE CONTOUR TO PROMOTE GROUND INFILTRATION AND PREPARE THE SOIL FOR SEEDING. THE EARTH DISTURBANCE WAS STABILIZED BY HYDRO-SEEDEDING USING AN APPROVED HILL RANCH SEED MIX TO PROMOTE THE ESTABLISHMENT OF VEGETATION.

GOLDEN EAGLE MINE NW-3-5-95 API# 05-071-06406 – TIMBER CREEK  
OGCC OPERATOR NUMBER 10672 – INSPECTION DATE: MAY 01, 2018  
CORRECTIVE ACTIONS COMPLETED REGARDING COGCC FIR DOCUMENT # 680102758

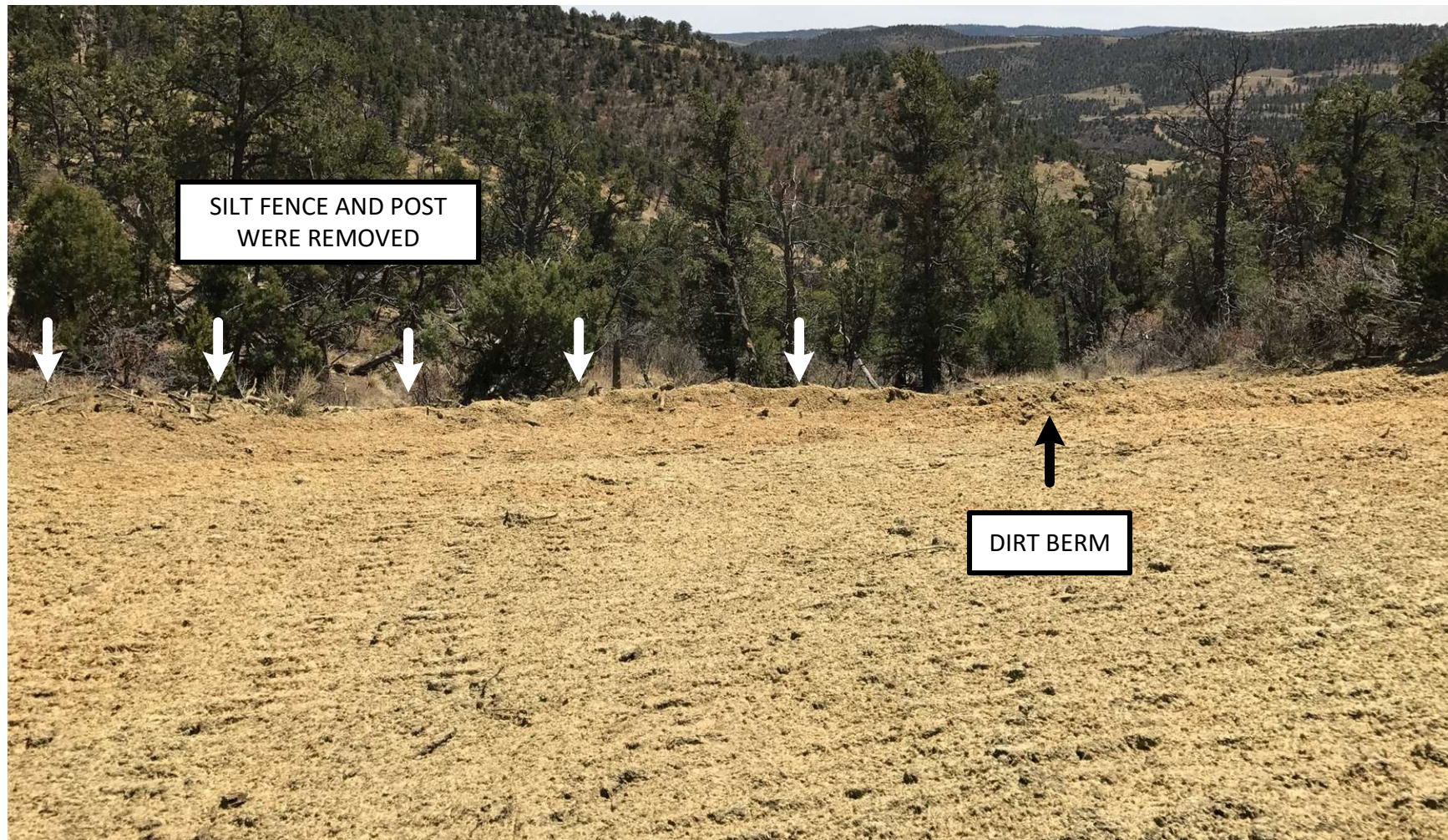


PHOTO 3: BASE OF RECLAIMED WELL PAD FILL SLOPE. THE WELL PAD WAS RECONTOURED TO MATCH THE SURROUNDING TERRAIN WHICH CORRECTED THE SEVERE EROSION ISSUES. GRADING TECHNIQUES WERE INSTALLED ON THE CONTOUR TO PROMOTE GROUND INFILTRATION AND PREPARE THE SOIL FOR SEEDING. A DIRT BERM WAS INSTALLED TOE OF SLOPE TO PROVIDE SEDIMENT CONTROL. THE EARTH DISTURBANCE WAS STABILIZED BY HYDRO-SEEDING USING AN APPROVED HILL RANCH SEED MIX TO PROMOTE THE ESTABLISHMENT OF VEGETATION. THE SILT FENCE AND DEBRIS WERE REMOVED FROM LOCATION.

GOLDEN EAGLE MINE NW-3-5-95 API# 05-071-06406 – TIMBER CREEK  
OGCC OPERATOR NUMBER 10672 – INSPECTION DATE: MAY 01, 2018  
CORRECTIVE ACTIONS COMPLETED REGARDING COGCC FIR DOCUMENT # 680102758



PHOTO 4: FACING NORTHWEST AT THE RECLAIMED CUT SLOPE OF WELL PAD. THE WELL PAD WAS RECONTOURED TO MATCH THE SURROUNDING TERRAIN. GRADING TECHNIQUES WERE INSTALLED ON THE CONTOUR TO PROMOTE GROUND INFILTRATION AND PREPARE THE SOIL FOR SEEDING. THE EARTH DISTURBANCE WAS STABILIZED BY HYDRO-SEEDING USING AN APPROVED HILL RANCH SEED MIX TO PROMOTE THE ESTABLISHMENT OF VEGETATION.

GOLDEN EAGLE MINE NW-3-5-95 API# 05-071-06406 – TIMBER CREEK  
OGCC OPERATOR NUMBER 10672 – INSPECTION DATE: MAY 01, 2018  
CORRECTIVE ACTIONS COMPLETED REGARDING COGCC FIR DOCUMENT # 680102758

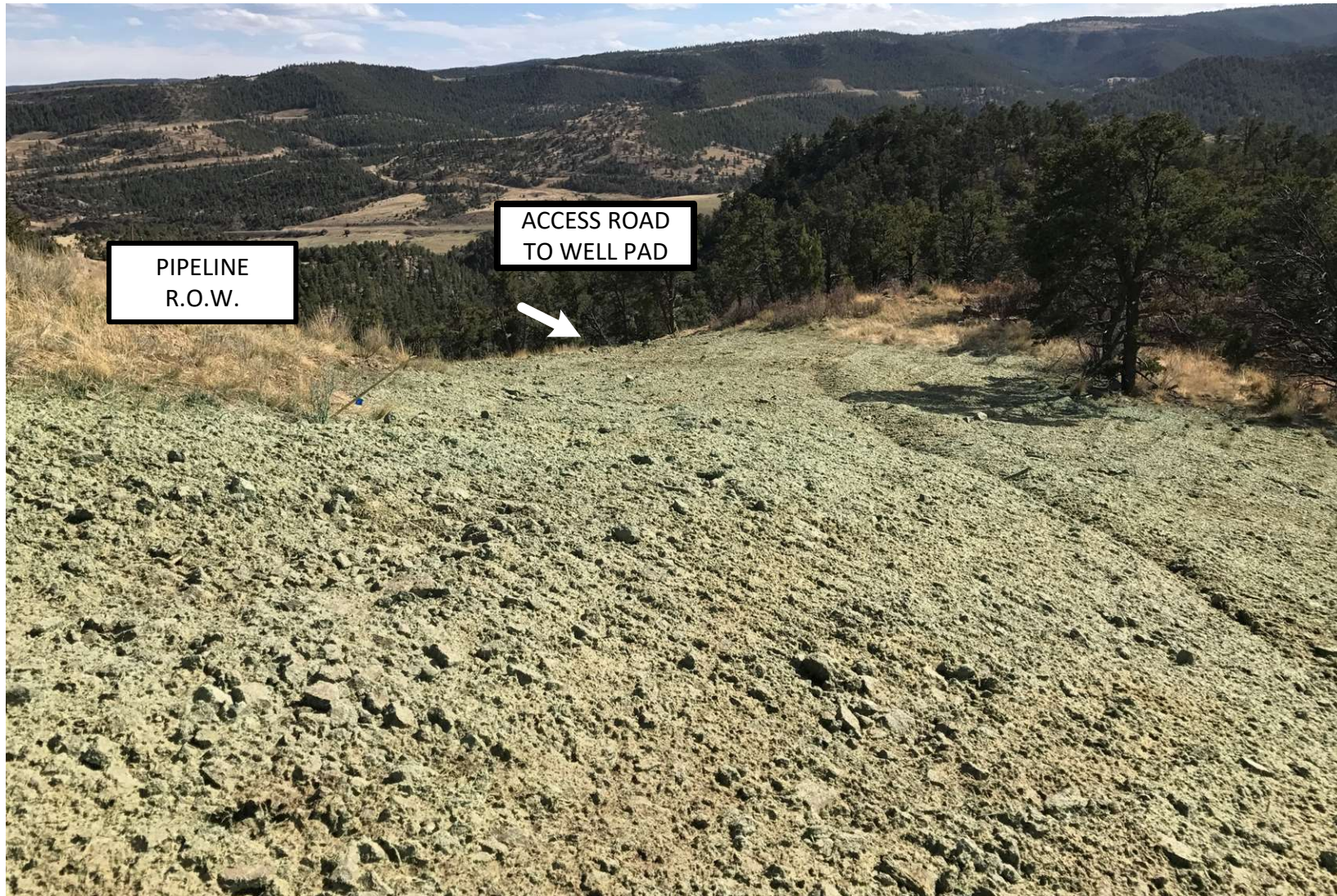


PHOTO 5: FACING SOUTH, THE ACCESS ROAD/PIPELINE R.O.W. WAS RECONTOURED TO MATCH THE SURROUNDING TERRAIN. GRADING TECHNIQUES WERE INSTALLED ON THE CONTOUR TO PROMOTE GROUND INFILTRATION AND PREPARE THE SOIL FOR SEEDING. THE EARTH DISTURBANCE WAS STABILIZED BY HYDRO-SEEDING USING AN APPROVED HILL RANCH SEED MIX TO PROMOTE THE ESTABLISHMENT OF VEGETATION.

GOLDEN EAGLE MINE NW-3-5-95 API# 05-071-06406 – TIMBER CREEK  
OGCC OPERATOR NUMBER 10672 – INSPECTION DATE: MAY 01, 2018  
CORRECTIVE ACTIONS COMPLETED REGARDING COGCC FIR DOCUMENT # 680102758



PHOTO 6: FACING SOUTH, THE ACCESS ROAD/PIPELINE R.O.W. WAS RECONTOURED TO MATCH THE SURROUNDING TERRAIN. GRADING TECHNIQUES WERE INSTALLED ON THE CONTOUR TO PROMOTE GROUND INFILTRATION AND PREPARE THE SOIL FOR SEEDING. THE EARTH DISTURBANCE WAS STABILIZED BY HYDRO-SEEDING USING AN APPROVED HILL RANCH SEED MIX TO PROMOTE THE ESTABLISHMENT OF VEGETATION.

GOLDEN EAGLE MINE NW-3-5-95 API# 05-071-06406 – TIMBER CREEK  
OGCC OPERATOR NUMBER 10672 – INSPECTION DATE: MAY 01, 2018  
CORRECTIVE ACTIONS COMPLETED REGARDING COGCC FIR DOCUMENT # 680102758



PHOTO 7: NORTHEAST END OF RECLAMATION ADJACENT TO THE MAIN LEASE ROAD IN LOPEZ CANYON. THE ACCESS ROAD/ PIPELINE R.O.W. WAS RECONTOURED TO MATCH THE SURROUNDING TERRAIN. GRADING TECHNIQUES WERE INSTALLED ON THE CONTOUR TO PROMOTE GROUND INFILTRATION AND PREPARE THE SOIL FOR SEEDING. THE EARTH DISTURBANCE WAS STABILIZED BY HYDRO-SEEDING USING AN APPROVED HILL RANCH SEED MIX TO PROMOTE THE ESTABLISHMENT OF VEGETATION.